



**REGIONAL TRANSPORTATION COMMISSION**

*Public Transportation • Streets and Highways • Planning*



# **RTC TRANSIT OPERATING STATISTICS**

**RTC RIDE  
RTC RAPID  
RTC INTERCITY  
SIERRA SPIRIT**

**August 2015**

# RTC TRANSIT OPERATING STATISTICS REPORT

## TABLE OF CONTENTS

RTC Transit Highlights .....	Page ii
RTC Transit Summary.....	Page iv
System Reports.....	Page 1
Revenue and Cost.....	Page 4
Economic Data .....	Page 5
Route Comparison Data.....	Page 8
Monthly Operating Statistics.....	Page 10
RTC RAPID.....	Page 20
RTC INTERCITY .....	Page 22
SIERRA SPIRIT .....	Page 24
University Pass Program.....	Page 26
National Comparisons .....	Page 28
Historic Ridership by Fare Category.....	Page 30

# RTC TRANSIT HIGHLIGHTS

## August 2015

### RTC Transit

- There were 693,420 rides in August, **4.9% lower** than last August.
- Weighted average daily ridership at 22,719 was **4.7% lower** than last August. (There were the same numbers of weekdays, Saturdays, and Sundays this month compared with last year.)
- Service hours (revenue vehicle hours) were the same this month compared with last year
- Productivity this month at 32.6 passengers per service hour was **4.9% lower** than last year.
- There were 8.08 million rides over the most recent twelve months. This is **1.3% lower** than the previous twelve months
- Over the most recent twelve months, operating cost was \$24.0 million and fare revenue was \$5.6 million. Operating cost was **down 3.2%** and revenue was **down 8.9%** compared to the previous twelve-month period
- The farebox recovery ratio (revenue divided by cost) was 23.2%, **down 1.4 percentage points**

### External Impacts on Ridership

Climate impact was more favorable this August compared with last August. Average temperature at 76.0°F was 2.1°F warmer than last year. There were two days of rain this month compared with three last year.

The price of gas in Reno at \$3.09 was **20% lower** than last year. High gas prices tend to encourage car drivers to use transit, and low gas prices have the reverse effect. While we experienced a ridership increase from the economic rebound, continued employment also may provide people with sufficient income to buy and drive a car.

As a result of the Great Recession, Reno-Sparks employment fell from an all-time high of 217,994 jobs in September 2007 to a ten-year low of 191,352 in January 2011. The number of unemployed people in Reno-Sparks more than tripled from 9.5K in September 2007 to almost 31K in January 2011.

However, employment has rebounded. Preliminary data shows 14.1K unemployed people in August 2015. The unemployment rate was 6.1%. **This is the lowest rate since May 2008.** There were 216K jobs in August, the third highest since December 2007. Nevada's unemployment rate for August was 6.8%, **the lowest rate since July 2008.** The national unemployment rate was 5.1%, **the lowest rate since April 2008.**

While these numbers have rebounded to those before the Great Recession, this does not necessarily mean everyone who lost a job has gained a job or even an equivalent

job or at an equivalent wage. It should be noted that the unemployment figures do not include people who have given up and not sought employment in the last four weeks as well as part-time and temporary workers.

The makeup of local employment is also changing. Casino hotel jobs in Reno-Sparks have fallen to 15.5K in August. In 1996 casino hotel jobs made up 16% of total employment. It now makes up 7.2%. On the other hand, food and drink place employment was around 8.5K in 1996 and is now at 15.3K.

# RTC TRANSIT SUMMARY

## RTC Transit Fare Categories

- In August, adult ridership was **down 6.4%** compared with last year (page 14). Adult ridership made up 54% of total ridership. **This is the lowest percentage ever for August.** By comparison, in August 1996, adult ridership made up 71% of total ridership.
- In August, reduced fare ridership was **down 3.0%**. Reduced fare ridership made up 46% of total ridership, **the highest percentage ever for August.** (Page 30 shows the steady annual growth of reduced fare ridership since FY 1996.) **There were 108K more reduced fare rides in August than 20 years ago, a 51% increase. In FY 2015, the RTC carried 1.5 million more reduced fare rides than FY 1997.**
- This month, cash ridership was **down 2.4%** compared with last year. Pass ridership **fell 5.9%** compared with last year. Pass ridership now makes up 62% of all ridership. Cash only makes up 36% of total ridership.
- Page 30 shows the steady decline of cash ridership. What is interesting is that cash ridership was on the decline before the Great Recession and may be indicative of the steady decline of tourism/gaming in the area. Also, since 2004, cash fares have also been raised much more than pass fares.

## RTC Route Ridership

- Route 5 (serving Sutro St and Sun Valley) has the highest productivity in the system (excluding RTC RAPID) with 43.3 rides per service hour followed by Route 11 (serving Reno and Sparks) with 41.6.
- Only one route experienced greater ridership than last year (excluding SIERRA SPIRIT). Route 15 (serving Sutro and TMCC) **increased by 0.6%**. Route 11 (serving E 4<sup>th</sup> St and Prater Way) **fell the most by 14%** followed by Route 7 (serving N Virginia St and Stead) which fell by 14%.



## RTC RAPID

- There were 116,344 rides on RAPID this month **down 1.5%** compared with last year. At 47.2 rides per service hour, RAPID is more productive than any RTC RIDE route. There were 173,483 rides on RAPID and Route 1 combined **down 2.9%** compared with last year (page 20).

## RTC INTERCITY

- There were 2,832 rides this month, **down 5.4%** compared with last August (page 22). At 10.4 rides per service hour, productivity is **down 5.4%** compared with last year. For the most recent 12 months, there were 35,809 rides, **down 1.8%** compared with the previous 12 months.

## SIERRA SPIRIT

- There were 13,716 rides this month, **up 63%** compared with last August (page 24). Productivity at 18.4 rides per service hour is **63% higher** than last year. Keep in mind, this may be as much a reflection of unusually low ridership last August. Ridership was only up 12% over August 2013. There were 148,953 rides over the most recent 12 months, **up 7.0%** from the previous 12 months.

## University of Nevada, Reno Wolf Pass Program

- There were 3,784 Wolf Pass rides on RTC RIDE and RTC INTERCITY this month, **62% higher** than last August (page 26).

## Truckee Meadows Community College Pass Program

- There were 4,610 rides this month on RIDE and INTERCITY. This is **down 13%** compared with last August.

## National Comparison

- Pages 28 and 29 compare annual RTC performance data with all bus agencies in the nation. Our productivity has remained below the national average since FY 1998. The financial information has not been published by APTA for FY 2014 and FY 2015. Our operating cost increased faster than the nation from FY 2003 to FY 2008 but has been declining since. Our farebox recovery ratio had exceeded the national average until FY 2006. (Keep in mind the limitations of comparing the RTC to the nation. One difference is how our economy suffered more from the Great Recession than the rest of the country, although our economy grew faster than the rest of the nation before that point. Other transit agencies may have also acquired light rail and taken rides away from bus transit. National bus includes BRT and commuter bus service.)



RTC Transit Operating Statistics

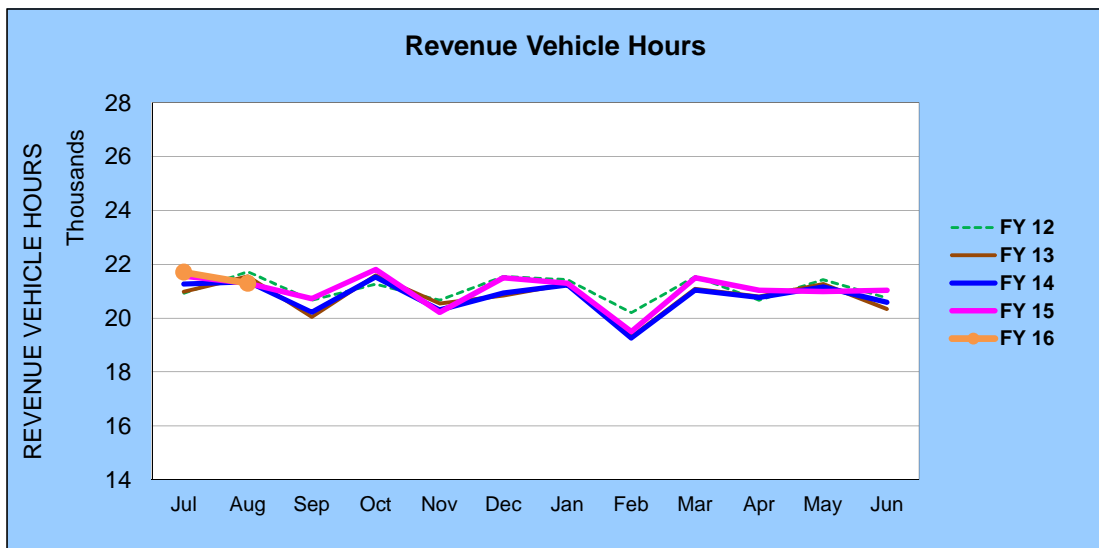
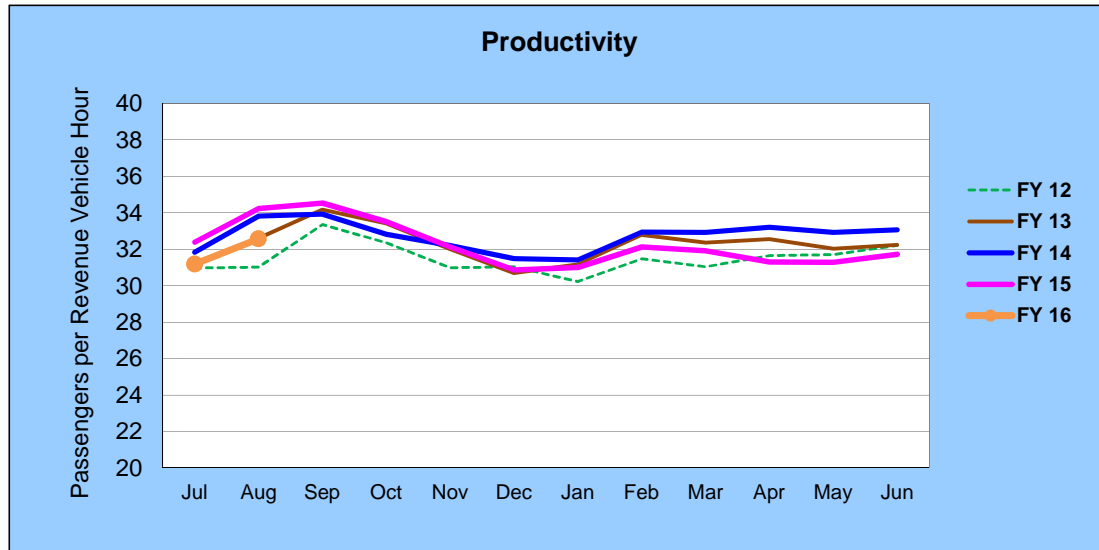
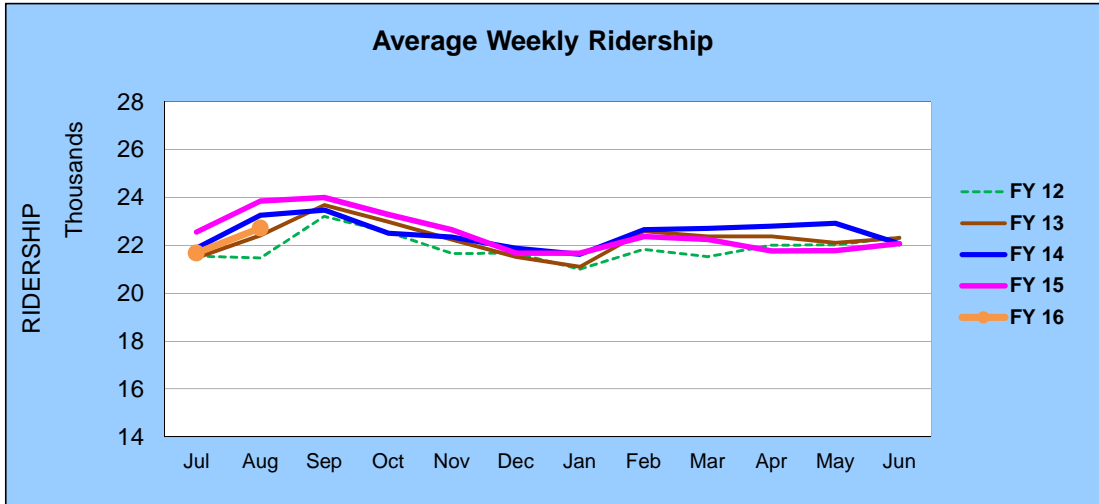
<b>RTC Transit</b>						
<b>ROLLING 12 MONTH RIDERSHIP COMPARISON</b>						
<b>Most Recent 12 Months</b>			<b>Percent Change</b>	<b>Previous 12 Months</b>		
<b>Month</b>	<b>Year</b>	<b>Ridership</b>		<b>Month</b>	<b>Year</b>	<b>Ridership</b>
Sep	2014	715,832	4.3%	Sep	2013	686,172
Oct		730,697	3.4%	Oct		706,384
Nov		649,337	-0.7%	Nov		653,794
Dec		663,553	0.7%	Dec		659,137
Jan	2015	660,211	-1.0%	Jan	2014	666,895
Feb		626,117	-1.3%	Feb		634,344
Mar		686,118	-0.9%	Mar		692,568
Apr		658,441	-4.5%	Apr		689,582
May		656,530	-5.8%	May		696,631
Jun		667,123	-2.0%	Jun		680,533
Jul		676,591	-3.1%	Jul		698,063
Aug		693,420	-4.9%	Aug		728,886
<b>TOTAL</b>		<b>8,083,970</b>	<b>-1.3%</b>	<b>TOTAL</b>		<b>8,192,989</b>

RTC Transit includes RTC RIDE, RTC RAPID, RTC INTERCITY, & RTC SIERRA SPIRIT



# RTC Transit

## FISCAL YEAR COMPARISONS

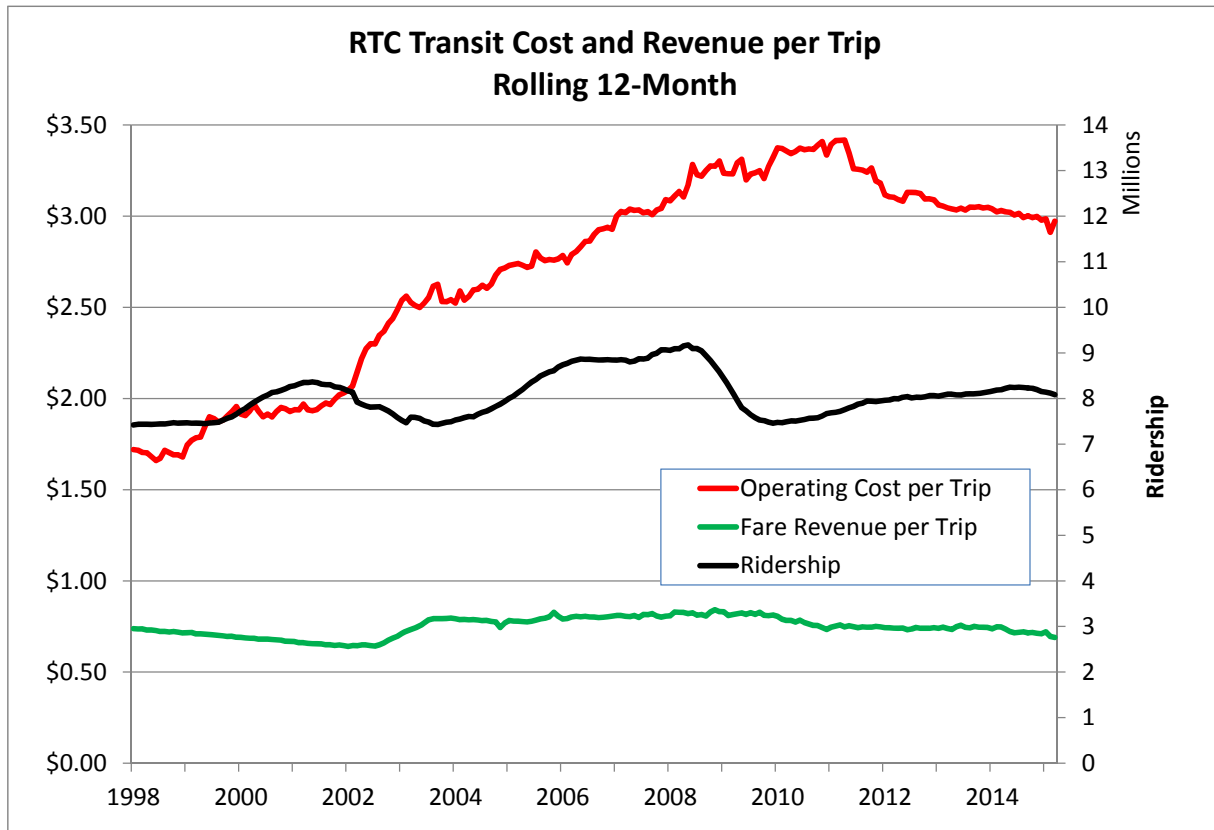
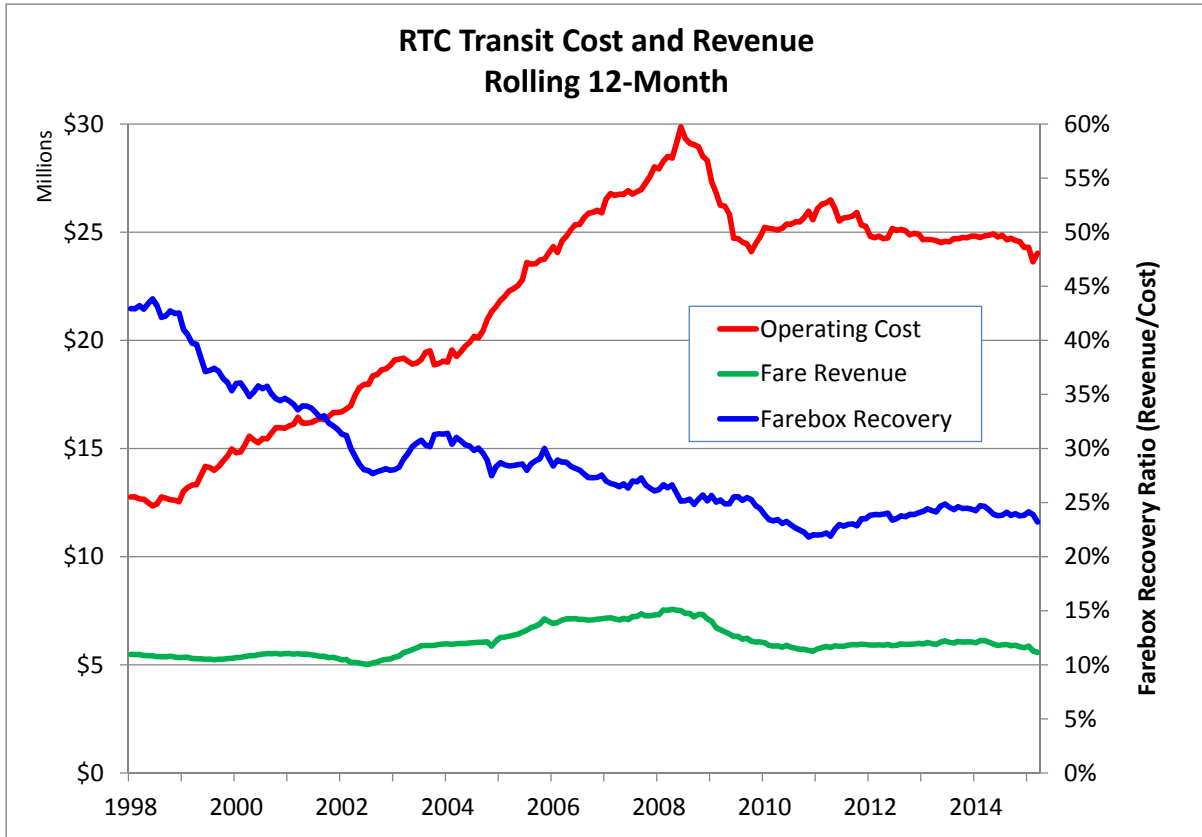


## RTC Transit

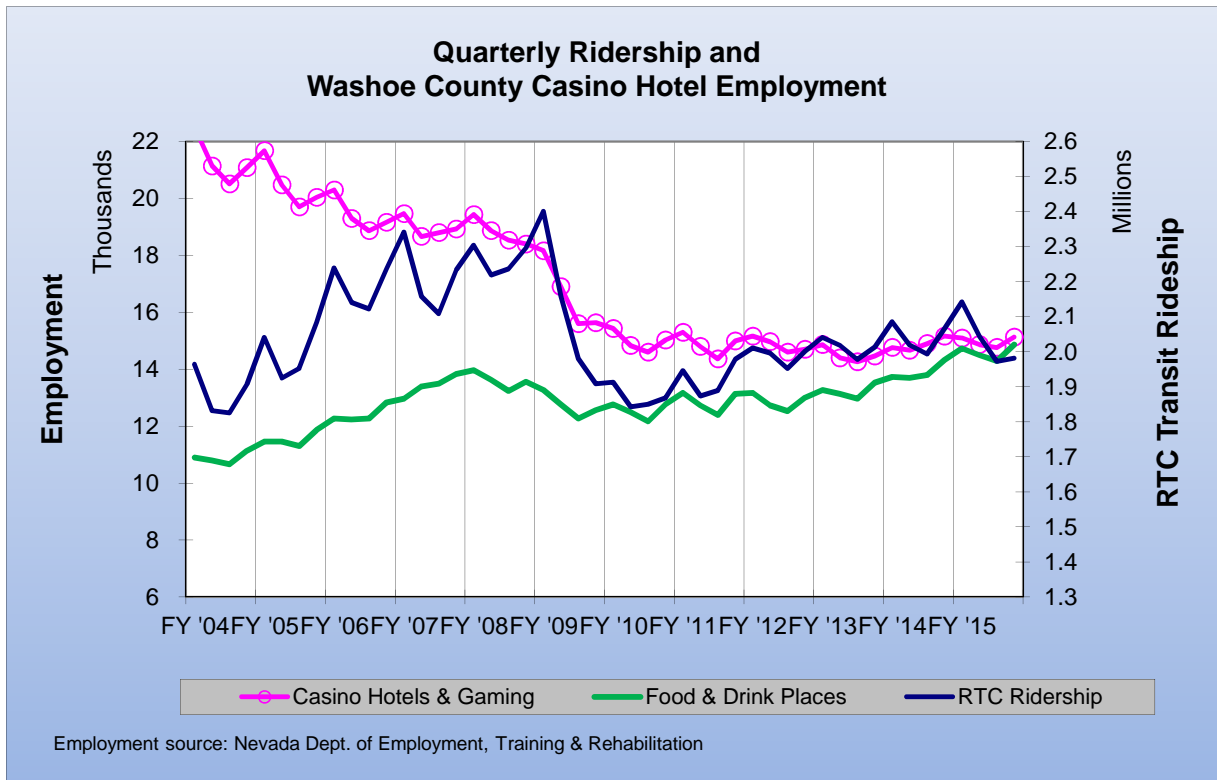
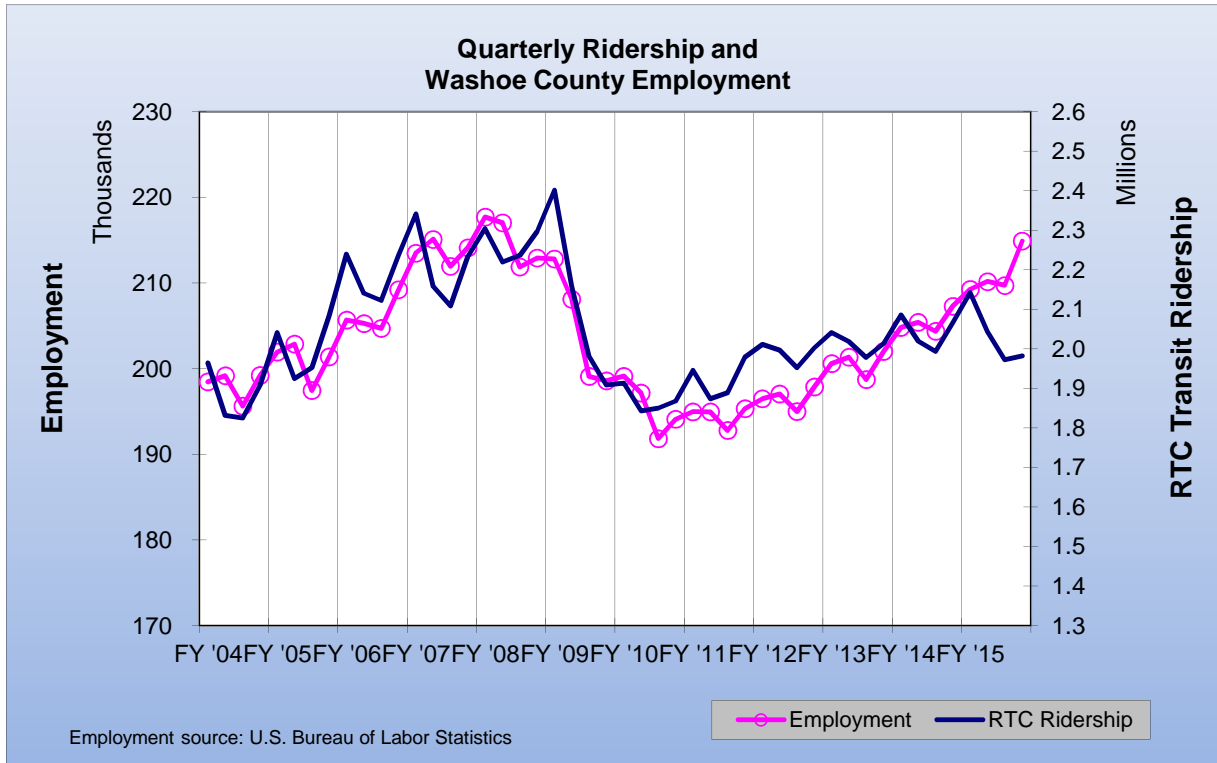
WEIGHTED AVERAGE DAILY RIDERSHIP							
Month	FY 16	Perc. Change From:			FY 15	FY 14	FY 13
		FY 15	FY 14	FY 13			
Jul	21,676	-3.9%	-0.9%	0.9%	22,558	21,876	21,480
Aug	22,719	-4.7%	-2.3%	1.3%	23,851	23,261	22,418
Sep					24,001	23,465	23,691
Oct					23,293	22,514	22,994
Nov					22,648	22,352	22,235
Dec					21,673	21,886	21,515
Jan					21,667	21,627	21,100
Feb					22,361	22,655	22,589
Mar					22,245	22,708	22,377
Apr					21,769	22,800	22,378
May					21,776	22,921	22,101
Jun					22,067	22,890	22,306

Weighted Avg. Daily Ridership = ( avg. weekday X 5) + avg. Saturday + avg. Sunday ) / 7  
 Holidays are excluded from the weighted average.

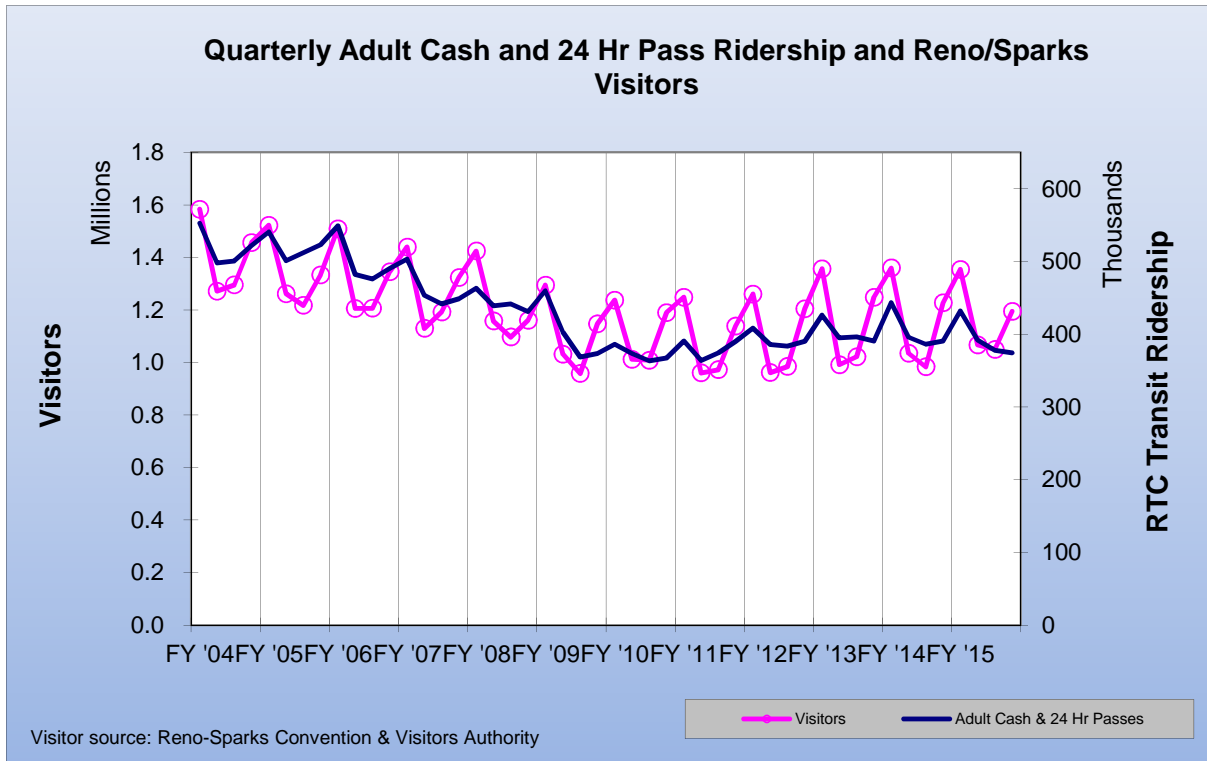
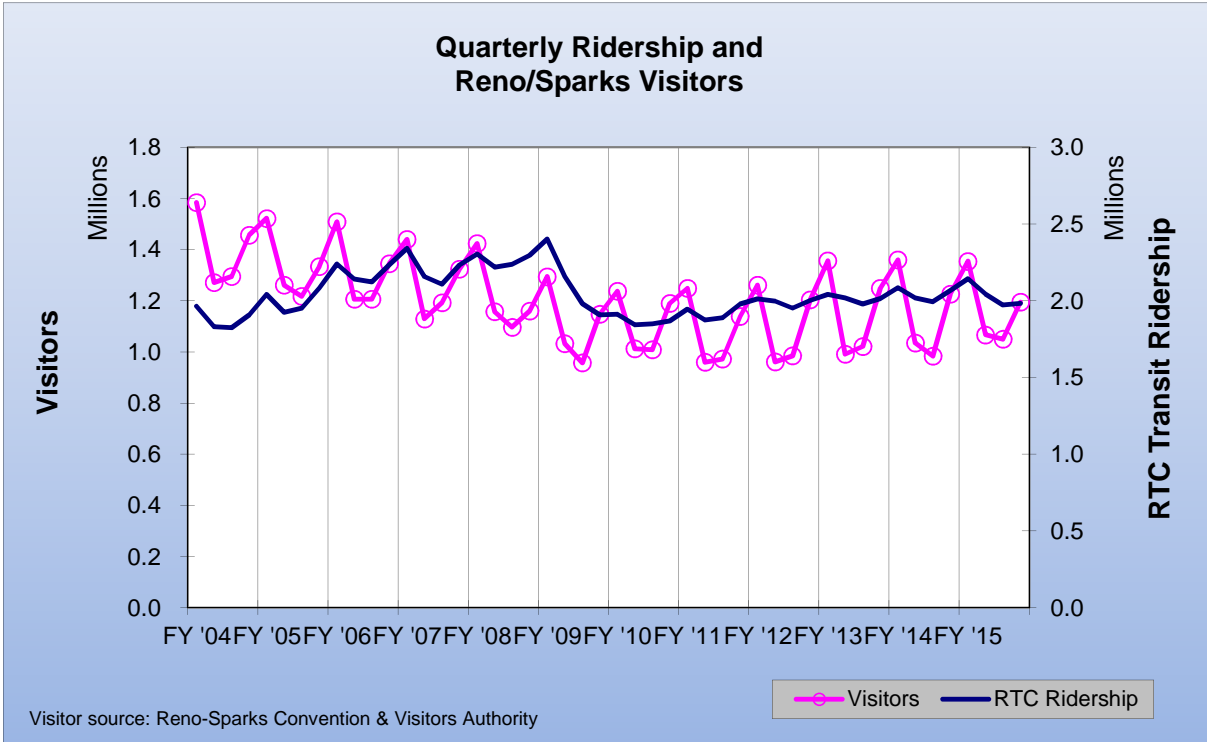
WEEKDAY, SATURDAY, AND SUNDAY RIDERSHIP ROLLING TWELVE MONTH COMPARISON									
Month	Weekday			Saturday			Sunday		
	Recent 12 Mos.	Percent Change	Previous 12 Mos.	Recent 12 Mos.	Percent Change	Previous 12 Mos.	Recent 12 Mos.	Percent Change	Previous 12 Mos.
Sep	27,044	2.7%	26,323	18,808	2.5%	18,350	13,985	-2.2%	14,294
Oct	26,168	3.3%	25,334	18,251	2.5%	17,813	13,960	6.4%	13,115
Nov	25,696	2.6%	25,044	16,824	-4.7%	17,653	13,235	-2.6%	13,589
Dec	24,240	-1.6%	24,624	17,156	1.8%	16,847	13,356	0.9%	13,235
Jan	24,323	-0.2%	24,363	16,888	2.4%	16,499	13,166	0.7%	13,074
Feb	25,360	-0.4%	25,455	16,810	-6.0%	17,882	12,921	-3.8%	13,429
Mar	24,980	-2.2%	25,553	17,504	-1.5%	17,775	13,307	-0.8%	13,416
Apr	24,452	-4.5%	25,591	17,205	-5.2%	18,144	12,918	-4.3%	13,500
May	24,281	-5.5%	25,684	17,566	-3.6%	18,218	13,462	-2.5%	13,811
Jun	24,623	-3.9%	25,632	17,680	-2.2%	18,080	13,673	-2.3%	13,990
Jul	24,129	-4.6%	25,289	17,456	-1.6%	17,743	13,626	-0.7%	13,719
Aug	25,433	-3.9%	26,477	18,232	-7.4%	19,679	13,635	-8.5%	14,895



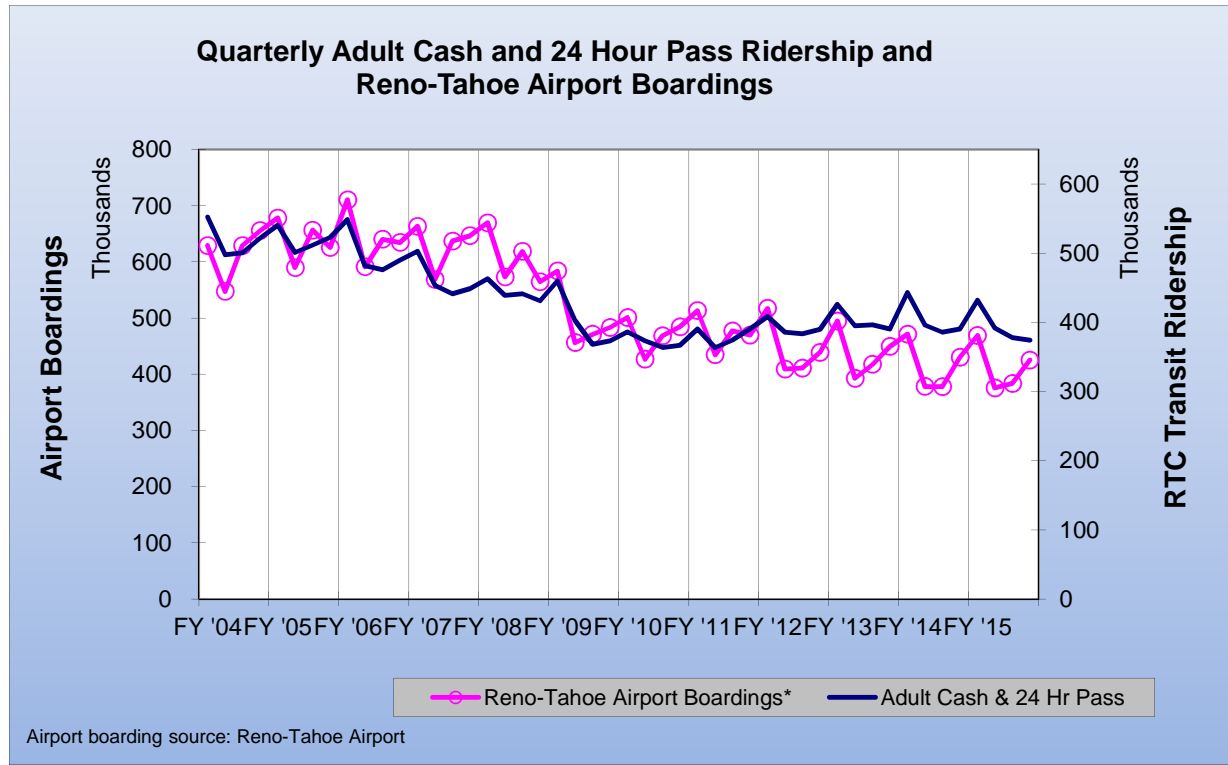
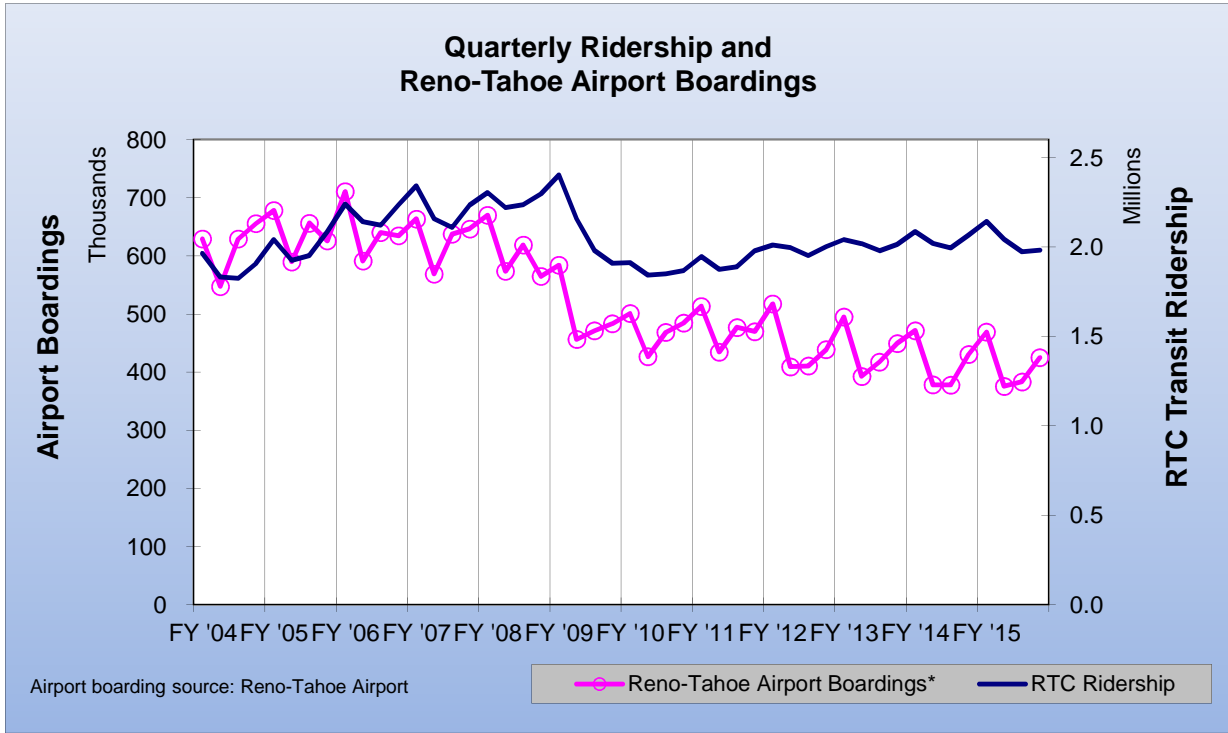
# RTC Transit



# RTC Transit



# RTC Transit



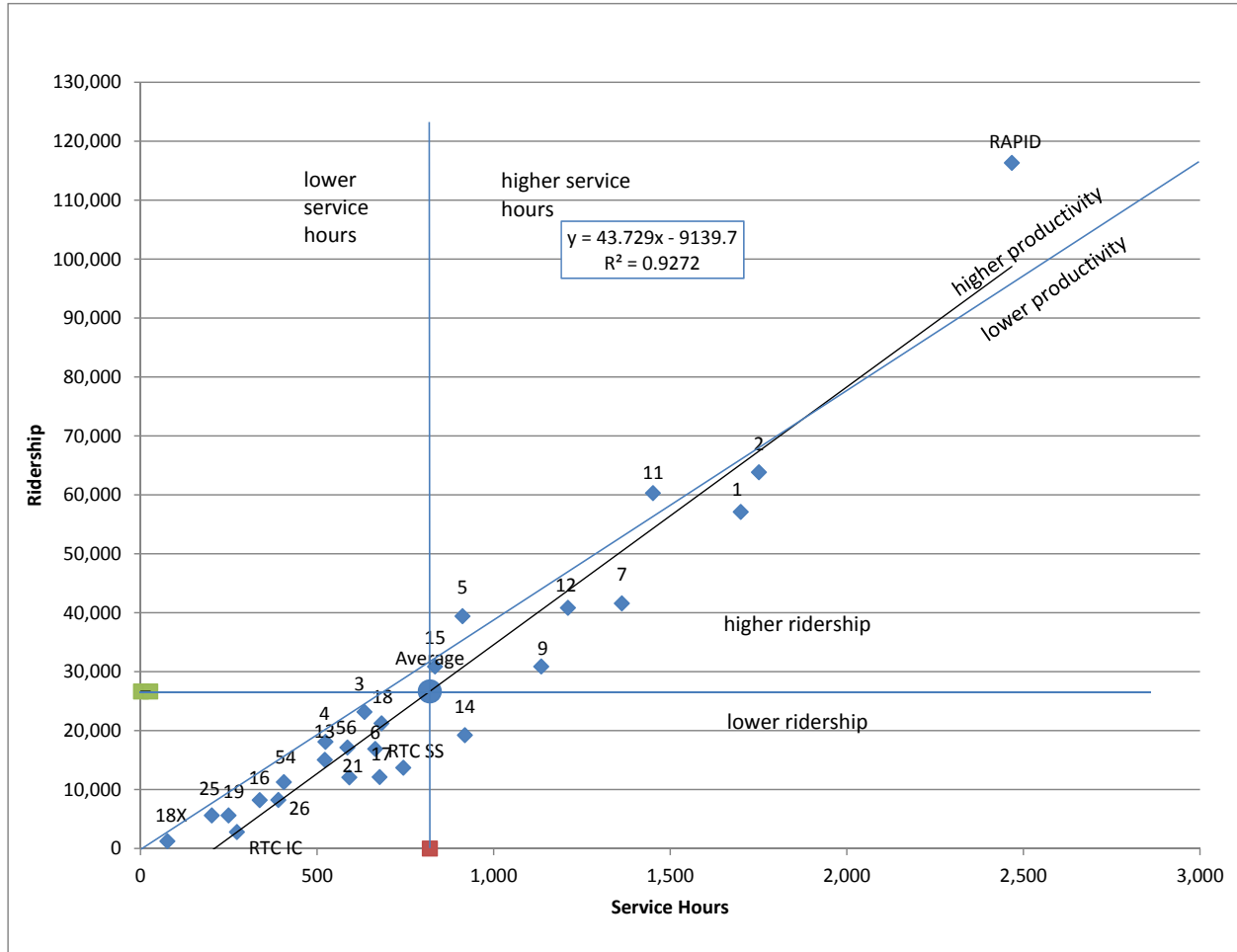
# RTC ROUTE COMPARISON REPORT

## AUGUST 2015

Route *	Productivity	Route	Svs Hours Change Fr. Last Year	Route	Ridership	Route	Ridership Change From Last Year
RAPID	47.2	RAPID	0.0%	RAPID	116,344	SS	63.1%
5	43.3	1	0.0%	2	63,853	15	0.6%
11	41.6	2	0.0%	11	60,324	3	-0.2%
15	37.1	3	0.0%	1	57,139	19	-0.5%
3	36.6	4	0.0%	7	41,617	56	-0.7%
2	36.5	5	0.0%	12	40,882	12	-1.0%
4	34.6	6	0.0%	5	39,456	RAPID	-1.5%
12	33.8	7	0.0%	15	30,905	17	-3.0%
1	33.6	9	0.0%	9	30,891	18X	-3.3%
TOTAL	32.6	11	0.0%	3	23,174	26	-3.4%
18	31.2	12	0.0%	18	21,255	2	-4.3%
7	30.5	13	0.0%	14	19,247	4	-4.7%
56	29.3	14	0.0%	4	18,123	9	-4.9%
13	28.9	15	0.0%	56	17,156	TOTAL	-4.9%
25	28.0	16	0.0%	6	16,903	6	-5.1%
54	27.8	17	0.0%	13	15,058	5	-5.4%
9	27.2	18	0.0%	SS	13,716	RTC IC	-5.4%
6	25.5	18X	0.0%	17	12,136	1	-5.6%
16	24.4	19	0.0%	21	12,098	13	-7.3%
19	22.6	21	0.0%	54	11,285	14	-7.6%
26	21.2	25	0.0%	26	8,255	21	-9.1%
14	21.0	26	0.0%	16	8,223	54	-9.8%
21	20.5	54	0.0%	25	5,641	16	-10.4%
SS	18.4	56	0.0%	19	5,634	18	-10.7%
17	17.9	RTC IC	0.0%	RTC IC	2,832	25	-11.6%
18X	16.8	SS	0.0%	18X	1,273	7	-13.7%
RTC IC	10.4	TOTAL	0.0%	TOTAL	693,420	11	-13.9%

\* - RTC IC is RTC INTERCITY. RTC SS is RTC SIERRA SPIRIT

### RTC Route Comparison Chart AUGUST 2015



"higher" and "lower" refer to higher or lower than the average of all routes (not the system average)



**AUGUST 2015**

	ROUTE							
	RAPID	1	2	3	4	5	6	7
<b>Total Ridership</b>	<b>116,344</b>	<b>57,139</b>	<b>63,853</b>	<b>23,174</b>	<b>18,123</b>	<b>39,456</b>	<b>16,903</b>	<b>41,617</b>
Previous Year (AUG 2014)	118,152	60,517	66,701	23,227	19,016	41,694	17,809	48,248
Change	-1.5%	-5.6%	-4.3%	-0.2%	-4.7%	-5.4%	-5.1%	-13.7%
Average Daily Ridership	3,753	1,843	2,060	748	585	1,273	545	1,342
Days Route Operated	31	31	31	31	31	31	31	31
<b>Revenue Veh. Hours</b>	<b>2,467.3</b>	<b>1,699.3</b>	<b>1,751.1</b>	<b>633.8</b>	<b>523.2</b>	<b>911.6</b>	<b>664.2</b>	<b>1,362.7</b>
Previous Year (AUG 2014)	2,467.3	1,699.3	1,751.1	633.8	523.2	911.6	664.2	1,362.7
Change	0.0%	0.0%	0.0%	0.0%	0.0%	0.0%	0.0%	0.0%
<b>Passengers / RVH</b>	<b>47.2</b>	<b>33.6</b>	<b>36.5</b>	<b>36.6</b>	<b>34.6</b>	<b>43.3</b>	<b>25.5</b>	<b>30.5</b>
Previous Year (AUG 2014)	47.9	35.6	38.1	36.6	36.3	45.7	26.8	35.4
Change	-1.5%	-5.6%	-4.3%	-0.2%	-4.7%	-5.4%	-5.1%	-13.7%
<b>Revenue Vehicle Miles</b>	<b>22,132</b>	<b>12,878</b>	<b>18,414</b>	<b>8,796</b>	<b>6,811</b>	<b>11,975</b>	<b>6,098</b>	<b>25,691</b>
<b>Passengers / RVM</b>	<b>5.26</b>	<b>4.44</b>	<b>3.47</b>	<b>2.63</b>	<b>2.66</b>	<b>3.29</b>	<b>2.77</b>	<b>1.62</b>
Previous Year (AUG 2014)	5.34	4.70	3.62	2.64	2.79	3.48	2.92	1.88
Change	-1.5%	-5.6%	-4.3%	-0.2%	-4.7%	-5.4%	-5.1%	-13.7%
One-Way Trips	4,598	2,666	2,608	1,308	1,047	1,786	1,334	2,051
Deadhead Miles	1,419.8	629.0	1,269.4	985.4	428.3	604.4	400.7	725.9
Deadhead Hours	89.87	24.28	50.91	41.65	14.15	26.25	20.95	26.36
Est. Gross Operating Cost	\$266,693	\$183,682	\$189,283	\$68,507	\$56,552	\$98,540	\$71,789	\$147,293
Est. Cost Per RVH	\$108.09	\$108.09	\$108.09	\$108.09	\$108.09	\$108.09	\$108.09	\$108.09
Est. Cost Per RVM	\$12.05	\$14.26	\$10.28	\$7.79	\$8.30	\$8.23	\$11.77	\$5.73
Est. Cost Per Passenger	\$2.29	\$3.21	\$2.96	\$2.96	\$3.12	\$2.50	\$4.25	\$3.54

**AUGUST 2015**

	<b>ROUTE</b>							
	<b>9</b>	<b>11</b>	<b>12</b>	<b>13</b>	<b>14</b>	<b>15</b>	<b>16</b>	<b>17</b>
<b>Total Ridership</b>	<b>30,891</b>	<b>60,324</b>	<b>40,882</b>	<b>15,058</b>	<b>19,247</b>	<b>30,905</b>	<b>8,223</b>	<b>12,136</b>
Previous Year (AUG 2014)	32,469	70,072	41,293	16,251	20,825	30,725	9,177	12,508
Change	-4.9%	-13.9%	-1.0%	-7.3%	-7.6%	0.6%	-10.4%	-3.0%
Average Daily Ridership	996	1,946	1,319	486	621	997	265	391
Days Route Operated	31	31	31	31	31	31	31	31
<b>Revenue Veh. Hours</b>	<b>1,134.4</b>	<b>1,450.7</b>	<b>1,210.1</b>	<b>521.6</b>	<b>918.3</b>	<b>833.8</b>	<b>336.9</b>	<b>676.5</b>
Previous Year (AUG 2014)	1,134.4	1,450.7	1,210.1	521.6	918.3	833.8	336.9	676.5
Change	0.0%	0.0%	0.0%	0.0%	0.0%	0.0%	0.0%	0.0%
<b>Passengers / RVH</b>	<b>27.2</b>	<b>41.6</b>	<b>33.8</b>	<b>28.9</b>	<b>21.0</b>	<b>37.1</b>	<b>24.4</b>	<b>17.9</b>
Previous Year (AUG 2014)	28.6	48.3	34.1	31.2	22.7	36.9	27.2	18.5
Change	-4.9%	-13.9%	-1.0%	-7.3%	-7.6%	0.6%	-10.4%	-3.0%
<b>Revenue Vehicle Miles</b>	<b>11,126</b>	<b>11,463</b>	<b>13,153</b>	<b>4,328</b>	<b>8,928</b>	<b>9,483</b>	<b>3,087</b>	<b>12,813</b>
<b>Passengers / RVM</b>	<b>2.78</b>	<b>5.26</b>	<b>3.11</b>	<b>3.48</b>	<b>2.16</b>	<b>3.26</b>	<b>2.66</b>	<b>0.95</b>
Previous Year (AUG 2014)	2.92	6.11	3.14	3.76	2.33	3.24	2.97	0.98
Change	-4.9%	-13.9%	-1.0%	-7.3%	-7.6%	0.6%	-10.4%	-3.0%
One-Way Trips	1,828	3,713	1,817	1,057	1,877	1,589	1,036	1,025
Deadhead Miles	608.7	756.4	649.8	180.6	692.8	489.8	234.6	472.5
Deadhead Hours	22.10	31.21	23.59	9.42	31.90	24.85	8.40	16.92
Est. Gross Operating Cost	\$122,621	\$156,812	\$130,805	\$56,377	\$99,255	\$90,125	\$36,414	\$73,120
Est. Cost Per RVH	\$108.09	\$108.09	\$108.09	\$108.09	\$108.09	\$108.09	\$108.09	\$108.09
Est. Cost Per RVM	\$11.02	\$13.68	\$9.94	\$13.03	\$11.12	\$9.50	\$11.79	\$5.71
Est. Cost Per Passenger	\$3.97	\$2.60	\$3.20	\$3.74	\$5.16	\$2.92	\$4.43	\$6.03

**AUGUST 2015**

	<b>ROUTE</b>					
	<b>18</b>	<b>18X</b>	<b>19</b>	<b>21</b>	<b>25</b>	<b>26</b>
<b>Total Ridership</b>	<b>21,255</b>	<b>1,273</b>	<b>5,634</b>	<b>12,098</b>	<b>5,641</b>	<b>8,255</b>
Previous Year (AUG 2014)	23,802	1,316	5,662	13,309	6,383	8,545
Change	-10.7%	-3.3%	-0.5%	-9.1%	-11.6%	-3.4%
Average Daily Ridership	686	61	268	390	217	266
Days Route Operated	31	21	21	31	26	31
<b>Revenue Veh. Hours</b>	<b>681.9</b>	<b>75.6</b>	<b>248.9</b>	<b>590.7</b>	<b>201.4</b>	<b>390.0</b>
Previous Year (AUG 2014)	681.9	75.6	248.9	590.7	201.4	390.0
Change	0.0%	0.0%	0.0%	0.0%	0.0%	0.0%
<b>Passengers / RVH</b>	<b>31.2</b>	<b>16.8</b>	<b>22.6</b>	<b>20.5</b>	<b>28.0</b>	<b>21.2</b>
Previous Year (AUG 2014)	34.9	17.4	22.8	22.5	31.7	21.9
Change	-10.7%	-3.3%	-0.5%	-9.1%	-11.6%	-3.4%
<b>Revenue Vehicle Miles</b>	<b>7,762</b>	<b>934</b>	<b>2,465</b>	<b>7,186</b>	<b>2,693</b>	<b>4,592</b>
<b>Passengers / RVM</b>	<b>2.74</b>	<b>1.36</b>	<b>2.29</b>	<b>1.68</b>	<b>2.09</b>	<b>1.80</b>
Previous Year (AUG 2014)	3.07	1.41	2.30	1.85	2.37	1.86
Change	-10.7%	-3.3%	-0.5%	-9.1%	-11.6%	-3.4%
One-Way Trips	1,396	168	504	1,826	636	1,164
Deadhead Miles	598.3	0.0	161.1	327.3	111.1	419.4
Deadhead Hours	27.30	0.00	7.35	13.50	4.59	14.39
Est. Gross Operating Cost	\$73,708	\$8,172	\$26,899	\$63,855	\$21,770	\$42,152
Est. Cost Per RVH	\$108.09	\$108.09	\$108.09	\$108.09	\$108.09	\$108.09
Est. Cost Per RVM	\$9.50	\$8.75	\$10.91	\$8.89	\$8.08	\$9.18
Est. Cost Per Passenger	\$3.47	\$6.42	\$4.77	\$5.28	\$3.86	\$5.11

**AUGUST 2015**

	ROUTE				
	54	56	RTC IC	SS	MISC SERVICE
<b>Total Ridership</b>	<b>11,285</b>	<b>17,156</b>	<b>2,832</b>	<b>13,716</b>	
Previous Year (AUG 2014)	12,508	17,271	2,995	8,411	
Change	-9.8%	-0.7%	-5.4%	63.1%	
Average Daily Ridership	364	553	135	442	
Days Route Operated	31	31	21	31	
<b>Revenue Veh. Hours</b>	<b>405.4</b>	<b>585.4</b>	<b>272.7</b>	<b>744.0</b>	
Previous Year (AUG 2014)	405.4	585.4	272.7	744.0	
Change	0.0%	0.0%	0.0%	0.0%	
<b>Passengers / RVH</b>	<b>27.8</b>	<b>29.3</b>	<b>10.4</b>	<b>18.4</b>	
Previous Year (AUG 2014)	30.9	29.5	11.0	11.3	
Change	-9.8%	-0.7%	-5.4%	63.1%	
<b>Revenue Vehicle Miles</b>	<b>6,458</b>	<b>8,668</b>	<b>8,632</b>	<b>6,886</b>	
<b>Passengers / RVM</b>	<b>1.75</b>	<b>1.98</b>	<b>0.33</b>	<b>1.99</b>	
Previous Year (AUG 2014)	1.94	1.99	0.35	1.22	
Change	-9.8%	-0.7%	-5.4%	63.1%	
One-Way Trips	818	1,194	252	2,976	
Deadhead Miles	243.4	460.6	805.4	470.3	
Deadhead Hours	9.30	16.25	36.75	24.80	
Est. Gross Operating Cost	\$43,819	\$63,275	\$29,471	\$80,420	
Est. Cost Per RVH	\$108.09	\$108.09	\$108.09	\$108.09	
Est. Cost Per RVM	\$6.79	\$7.30	\$3.41	\$11.68	
Est. Cost Per Passenger	\$3.88	\$3.69	\$10.41	\$5.86	

**Aug 2015**

	SYSTEM TOTALS		PERCENT CHANGE
	Aug 2015	Aug 2014	
<b>Cash Fares</b>			
Adult	96,768	99,388	-2.6%
Reduced	61,206	62,553	-2.2%
<b>Total Cash Fares</b>	<b>157,974</b>	<b>161,941</b>	<b>-2.4%</b>
<b>Period Pass Fares</b>			
Adult	172,179	189,107	-9.0%
Reduced	187,872	193,567	-2.9%
<b>Total Period Pass Fares</b>	<b>360,051</b>	<b>382,674</b>	<b>-5.9%</b>
Transfers	105,291	111,225	-5.3%
Flow Through	8,539	7,699	10.9%
Free Rides	16,437	18,219	-9.8%
RTC ACCESS ID Cash	3,343	3,013	11.0%
Stored Ride Pass	41,785	44,115	-5.3%
Adult Ridership	372,006	397,561	-6.4%
Reduced	321,414	331,325	-3.0%
<b>Total Ridership</b>	<b>693,420</b>	<b>728,886</b>	<b>-4.9%</b>
Previous Year	728,886		
Change	-4.9%		
Average Daily Ridership	22,368	23,512	-4.9%
Days Route Operated	31	31	0.0%
<b>Revenue Veh. Hours</b>	<b>21,291.3</b>	<b>21,291.3</b>	<b>0.0%</b>
Previous Year	21,291.3		
Change	0.0%		
<b>Passengers / RVH</b>	<b>32.6</b>	<b>34.2</b>	<b>-4.9%</b>
Previous Year	34.2		
Change	-4.9%		
<b>Revenue Vehicle Miles</b>	<b>243,455</b>	<b>243,455</b>	<b>0.0%</b>
<b>Passengers / RVM</b>	<b>2.85</b>	<b>2.99</b>	<b>-4.9%</b>
Previous Year	2.99		
Change	-4.9%		
One-Way Trips	42,274	42,274	0.0%
Deadhead Miles	14,145.0	14,145.0	0.0%
Deadhead Hours	617.03	617.03	0.0%
Est. Gross Operating Cost	\$2,301,408	\$2,208,001	4.2%
Est. Cost Per RVH	\$108.09	\$103.70	4.2%
Est. Cost Per RVM	\$9.45	\$9.07	4.2%
Est. Cost Per Passenger	\$3.32	\$3.03	9.6%

Sep '15 - Aug '16

	ROUTE							
	RAPID	1	2	3	4	5	6	7
<b>Total Ridership</b>	<b>1,317,526</b>	<b>657,306</b>	<b>746,370</b>	<b>266,670</b>	<b>208,636</b>	<b>467,358</b>	<b>192,248</b>	<b>522,771</b>
Previous 12 Months	1,348,451	666,910	743,199	264,365	214,406	471,121	195,264	538,436
Change	-2.3%	-1.4%	0.4%	0.9%	-2.7%	-0.8%	-1.5%	-2.9%
Average Daily Ridership	3,610	1,801	2,045	731	572	1,280	527	1,432
Days Route Operated	365	365	365	365	365	365	365	365
<b>Revenue Veh. Hours</b>	<b>29,191.0</b>	<b>20,008.1</b>	<b>20,752.7</b>	<b>7,520.7</b>	<b>6,189.9</b>	<b>10,857.3</b>	<b>7,894.7</b>	<b>16,096.1</b>
Previous 12 Months	29,174.9	20,008.1	20,739.5	7,514.4	6,186.9	10,833.8	7,964.1	16,090.4
Change	0.1%	0.0%	0.1%	0.1%	0.0%	0.2%	-0.9%	0.0%
<b>Passengers / RVH</b>	<b>45.1</b>	<b>32.9</b>	<b>36.0</b>	<b>35.5</b>	<b>33.7</b>	<b>43.0</b>	<b>24.4</b>	<b>32.5</b>
Previous 12 Months	46.2	33.3	35.8	35.2	34.7	43.5	24.5	33.5
Change	-2.3%	-1.4%	0.4%	0.8%	-2.7%	-1.0%	-0.7%	-2.9%
<b>Revenue Vehicle Miles</b>	<b>261,854</b>	<b>151,629</b>	<b>218,197</b>	<b>104,579</b>	<b>80,583</b>	<b>142,521</b>	<b>72,489</b>	<b>302,819</b>
<b>Passengers / RVM</b>	<b>5.03</b>	<b>4.33</b>	<b>3.42</b>	<b>2.55</b>	<b>2.59</b>	<b>3.28</b>	<b>2.65</b>	<b>1.73</b>
Previous 12 Months	5.15	4.40	3.41	2.53	2.66	3.31	2.66	1.78
Change	-2.3%	-1.4%	0.4%	0.8%	-2.8%	-0.9%	-0.1%	-2.9%
One-Way Trips	54,400	31,390	30,966	15,530	12,387	21,256	15,858	24,175
Deadhead Miles	16,774.3	7,405.9	15,244.5	11,913.2	5,036.6	7,269.5	4,814.2	8,612.8
Deadhead Hours	1,061.75	285.92	612.13	503.22	166.30	315.51	251.90	312.66
Est. Gross Operating Cost	\$3,038,207	\$2,082,384	\$2,159,942	\$782,766	\$644,244	\$1,130,075	\$821,704	\$1,675,259
Est. Cost Per RVH	\$104.08	\$104.08	\$104.08	\$104.08	\$104.08	\$104.08	\$104.08	\$104.08
Est. Cost Per RVM	\$11.60	\$13.73	\$9.90	\$7.48	\$7.99	\$7.93	\$11.34	\$5.53
Est. Cost Per Passenger	\$2.31	\$3.17	\$2.89	\$2.94	\$3.09	\$2.42	\$4.27	\$3.20

Sep '15 - Aug '16

	ROUTE							
	9	11	12	13	14	15	16	17
<b>Total Ridership</b>	<b>360,845</b>	<b>726,450</b>	<b>450,513</b>	<b>178,507</b>	<b>230,784</b>	<b>370,062</b>	<b>107,620</b>	<b>147,173</b>
Previous 12 Months	362,868	741,302	388,424	190,049	236,193	365,041	111,496	144,841
Change	-0.6%	-2.0%	16.0%	-6.1%	-2.3%	1.4%	-3.5%	1.6%
Average Daily Ridership	989	1,990	1,234	489	632	1,014	295	403
Days Route Operated	365	365	365	365	365	365	365	365
<b>Revenue Veh. Hours</b>	<b>13,490.6</b>	<b>17,193.1</b>	<b>14,415.7</b>	<b>6,149.1</b>	<b>10,952.7</b>	<b>9,937.0</b>	<b>3,989.6</b>	<b>8,000.4</b>
Previous 12 Months	13,510.6	17,182.1	13,810.8	6,149.1	10,939.2	9,908.8	3,986.9	7,996.3
Change	-0.1%	0.1%	4.4%	0.0%	0.1%	0.3%	0.1%	0.1%
<b>Passengers / RVH</b>	<b>26.7</b>	<b>42.3</b>	<b>31.3</b>	<b>29.0</b>	<b>21.1</b>	<b>37.2</b>	<b>27.0</b>	<b>18.4</b>
Previous 12 Months	26.9	43.1	28.1	30.9	21.6	36.8	28.0	18.1
Change	-0.4%	-2.1%	11.1%	-6.1%	-2.4%	1.1%	-3.5%	1.6%
<b>Revenue Vehicle Miles</b>	<b>132,449</b>	<b>135,730</b>	<b>156,514</b>	<b>51,018</b>	<b>106,531</b>	<b>112,929</b>	<b>36,559</b>	<b>151,520</b>
<b>Passengers / RVM</b>	<b>2.72</b>	<b>5.35</b>	<b>2.88</b>	<b>3.50</b>	<b>2.17</b>	<b>3.28</b>	<b>2.94</b>	<b>0.97</b>
Previous 12 Months	2.74	5.47	2.58	3.73	2.21	3.24	3.05	0.96
Change	-0.6%	-2.1%	11.4%	-6.1%	-2.1%	1.2%	-3.5%	1.6%
One-Way Trips	21,761	43,964	21,621	12,461	22,397	18,912	12,268	12,121
Deadhead Miles	7,264.5	8,828.2	7,767.1	2,119.2	8,382.7	5,871.9	2,765.5	5,560.2
Deadhead Hours	263.66	364.39	281.95	110.58	385.65	298.39	99.01	199.07
Est. Gross Operating Cost	\$1,404,143	\$1,789,460	\$1,500,455	\$639,976	\$1,140,011	\$1,034,293	\$415,236	\$832,681
Est. Cost Per RVH	\$104.08	\$104.08	\$104.08	\$104.08	\$104.09	\$104.08	\$104.08	\$104.08
Est. Cost Per RVM	\$10.60	\$13.18	\$9.59	\$12.54	\$10.70	\$9.16	\$11.36	\$5.50
Est. Cost Per Passenger	\$3.89	\$2.46	\$3.33	\$3.59	\$4.94	\$2.79	\$3.86	\$5.66

Sep '15 - Aug '16

	ROUTE						RTC SH
	18	18X	19	21	25	26	
<b>Total Ridership</b>	<b>260,851</b>	<b>15,755</b>	<b>70,857</b>	<b>144,138</b>	<b>71,227</b>	<b>92,046</b>	
Previous 12 Months	280,017	14,968	72,311	151,367	75,951	95,682	1,583
Change	-6.8%	5.3%	-2.0%	-4.8%	-6.2%	-3.8%	
Average Daily Ridership	715	62	277	395	232	252	
Days Route Operated	365	256	256	365	307	365	
<b>Revenue Veh. Hours</b>	<b>8,153.4</b>	<b>921.6</b>	<b>3,033.6</b>	<b>6,993.4</b>	<b>2,398.4</b>	<b>4,599.7</b>	
Previous 12 Months	8,139.8	918.0	3,021.8	6,989.8	2,395.9	4,598.9	220.5
Change	0.2%	0.4%	0.4%	0.1%	0.1%	0.0%	
<b>Passengers / RVH</b>	<b>32.0</b>	<b>17.1</b>	<b>23.4</b>	<b>20.6</b>	<b>29.7</b>	<b>20.0</b>	
Previous 12 Months	34.4	16.3	23.9	21.7	31.7	20.8	7.2
Change	-7.0%	4.8%	-2.4%	-4.8%	-6.3%	-3.8%	
<b>Revenue Vehicle Miles</b>	<b>92,808</b>	<b>11,387</b>	<b>30,044</b>	<b>85,093</b>	<b>32,076</b>	<b>54,158</b>	
<b>Passengers / RVM</b>	<b>2.81</b>	<b>1.38</b>	<b>2.36</b>	<b>1.69</b>	<b>2.22</b>	<b>1.70</b>	
Previous 12 Months	3.02	1.32	2.42	1.78	2.37	1.77	0.29
Change	-7.0%	4.8%	-2.4%	-4.8%	-6.3%	-3.8%	
One-Way Trips	16,692	2,048	6,144	21,622	7,574	13,727	
Deadhead Miles	7,171.5	0.0	1,963.5	3,813.2	1,302.6	4,952.9	
Deadhead Hours	327.25	0.00	89.60	157.34	53.89	168.15	
Est. Gross Operating Cost	\$848,659	\$95,937	\$315,794	\$727,876	\$249,634	\$478,726	
Est. Cost Per RVH	\$104.09	\$104.10	\$104.10	\$104.08	\$104.08	\$104.08	
Est. Cost Per RVM	\$9.14	\$8.43	\$10.51	\$8.55	\$7.78	\$8.84	
Est. Cost Per Passenger	\$3.25	\$6.09	\$4.46	\$5.05	\$3.50	\$5.20	



Sep '15 - Aug '16

	ROUTE					MISC Service
	54	56	57	RTC IC	SS	
<b>Total Ridership</b>	<b>132,371</b>	<b>197,876</b>		<b>35,972</b>	<b>143,648</b>	<b>3,856</b>
Previous 12 Months	132,033	195,142	2,040	36,954	143,016	2,927
Change	0.3%	1.4%		-2.7%	0.4%	31.7%
Average Daily Ridership	363	542		141	394	
Days Route Operated	365	365		256	365	
<b>Revenue Veh. Hours</b>	<b>4,791.4</b>	<b>6,954.2</b>		<b>3,323.7</b>	<b>8,760.0</b>	
Previous 12 Months	4,789.4	6,885.1	82.4	3,310.8	8,832.0	
Change	0.0%	1.0%		0.4%	-0.8%	
<b>Passengers / RVH</b>	<b>27.6</b>	<b>28.5</b>		<b>10.8</b>	<b>16.4</b>	
Previous 12 Months	27.6	28.3	24.8	11.2	16.2	
Change	0.2%	0.4%		-3.0%	1.3%	
<b>Revenue Vehicle Miles</b>	<b>76,329</b>	<b>102,990</b>		<b>105,228</b>	<b>81,083</b>	
<b>Passengers / RVM</b>	<b>1.73</b>	<b>1.92</b>		<b>0.34</b>	<b>1.77</b>	
Previous 12 Months	1.73	1.92	1.89	0.35	1.95	
Change	0.2%	0.2%		-3.5%	-9.1%	
One-Way Trips	9,668	14,186		3,072	35,040	
Deadhead Miles	2,865.3	5,533.9		9,817.6	5,537.1	
Deadhead Hours	109.50	195.37		448.00	292.00	
Est. Gross Operating Cost	\$498,688	\$723,808		\$345,996	\$911,716	
Est. Cost Per RVH	\$104.08	\$104.08		\$104.10	\$104.08	
Est. Cost Per RVM	\$6.53	\$7.03		\$3.29	\$11.24	
Est. Cost Per Passenger	\$3.77	\$3.66		\$9.62	\$6.35	

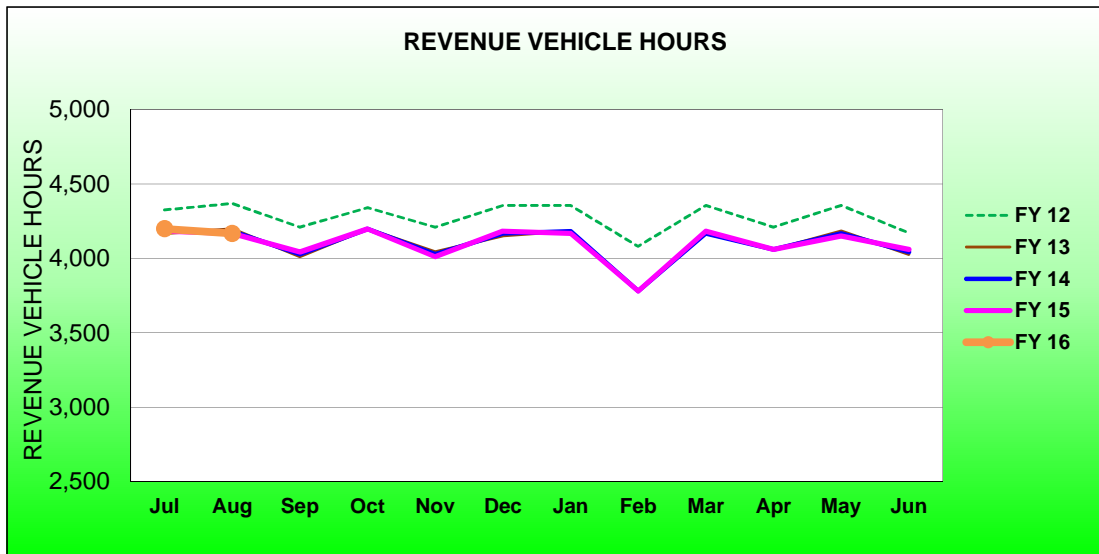
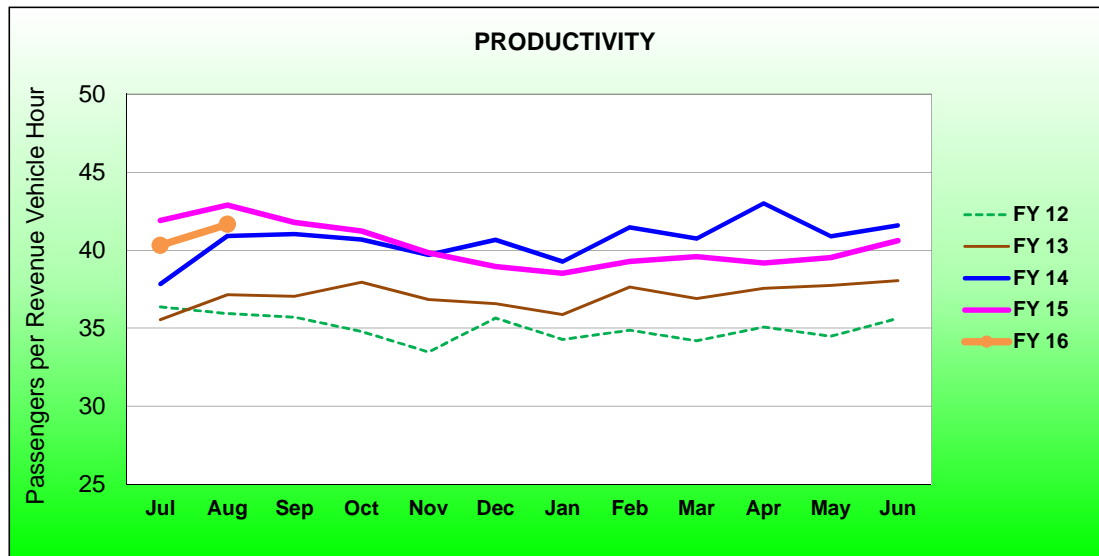
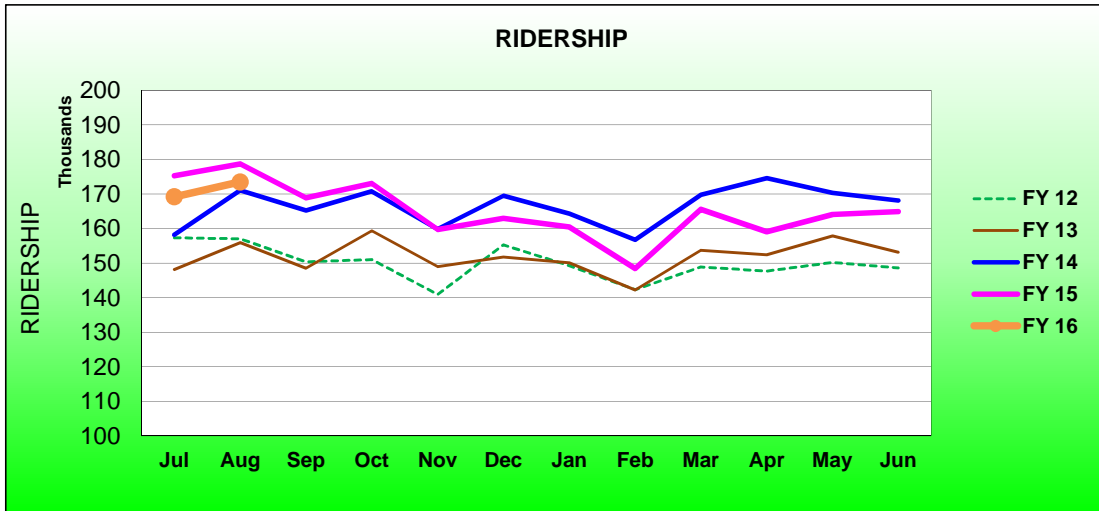
Sep 2014 - Aug 2015

	Current 12 Months	Previous 12 Month	PERCENT CHANGE
<b>Cash Fares</b>			
Adult	1,074,139	1,085,117	-1.0%
Reduced	687,170	705,453	-2.6%
<b>Total Cash Fares</b>	<b>1,761,309</b>	<b>1,790,570</b>	<b>-1.6%</b>
<b>Period Pass Fares</b>			
Adult	2,023,690	2,124,041	-4.7%
Reduced	2,146,903	2,051,384	4.7%
<b>Total Period Pass Fares</b>	<b>4,170,593</b>	<b>4,175,425</b>	<b>-0.1%</b>
Transfers	1,238,123	1,292,341	-4.2%
Flow Through	92,293	91,003	1.4%
Free Rides	258,836	265,894	-2.7%
RTC ACCESS ID Cash	36,255	33,834	7.2%
Stored Ride Pass	526,561	543,922	-3.2%
Adult Ridership	4,383,080	4,511,400	-2.8%
Reduced	3,736,356	3,674,957	1.7%
<b>Total Ridership</b>	<b>8,083,970</b>	<b>8,192,989</b>	<b>-1.3%</b>
Previous 12 Months	8,192,989		
Change	-1.3%		
Average Daily Ridership	264,771	261,476	1.3%
Days Route Operated	365	365	0.0%
<b>Revenue Veh. Hours</b>	<b>252,658.2</b>	<b>252,117.8</b>	<b>0.2%</b>
Previous 12 Months	252,117.8		
Change	0.2%		
<b>Passengers / RVH</b>	<b>32.0</b>	<b>32.5</b>	<b>-1.5%</b>
Previous 12 Months	32.5		
Change	-1.5%		
<b>Revenue Vehicle Miles</b>	<b>2,889,951</b>	<b>2,879,397</b>	<b>0.4%</b>
<b>Passengers / RVM</b>	<b>2.80</b>	<b>2.85</b>	<b>-1.7%</b>
Previous 12 Months	2.85		
Change	-1.7%		
One-Way Trips	501,600	490,299	2.3%
Deadhead Miles	168,633.0	168,831.3	-0.1%
Deadhead Hours	7,355.68	7,354.12	0.0%
Est. Gross Operating Cost	\$26,295,206	\$26,322,684	-0.1%
Est. Cost Per RVH	\$104.07	\$104.41	-0.3%
Est. Cost Per RVM	\$9.10	\$9.14	-0.5%
Est. Cost Per Passenger	\$3.25	\$3.21	1.2%

<b>RTC RAPID and CONNECT/Route 1</b>						
<b>ROLLING 12 MONTH COMPARISON</b>						
<b>Most Recent 12 Months</b>			<b>Percent Change</b>	<b>Previous 12 Months</b>		
<b>Month</b>	<b>Year</b>	<b>Ridership</b>		<b>Month</b>	<b>Year</b>	<b>Ridership</b>
Sep	2014	168,865	2.2%	Sep	2013	165,227
Oct		173,063	1.3%	Oct		170,813
Nov		159,715	-0.1%	Nov		159,822
Dec		162,927	-3.8%	Dec		169,448
Jan	2015	160,493	-2.3%	Jan	2014	164,260
Feb		148,429	-5.3%	Feb		156,714
Mar		165,544	-2.5%	Mar		169,725
Apr		159,028	-8.9%	Apr		174,542
May		164,046	-3.7%	May		170,362
Jun		164,867	-1.9%	Jun		168,082
Jul		169,186	-3.5%	Jul		175,259
Aug		173,483	-2.9%	Aug		178,669
<b>TOTAL</b>		<b>1,969,646</b>	<b>-2.6%</b>	<b>TOTAL</b>		<b>2,022,923</b>

Oct 11, 2009 RTC RAPID and RTC CONNECT introduced  
 Aug 11, 2013 RTC CONNECT becomes Route 1

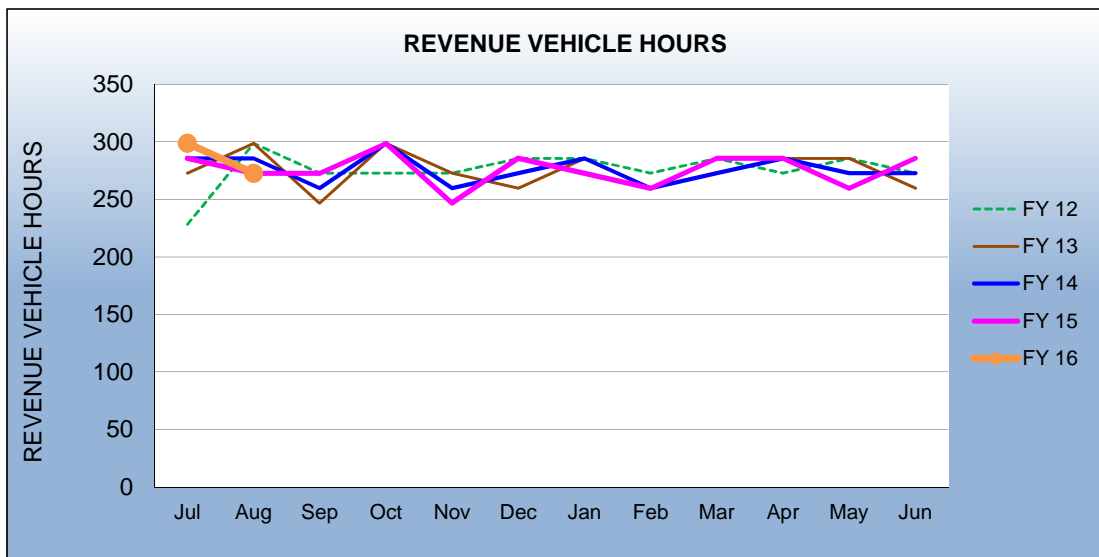
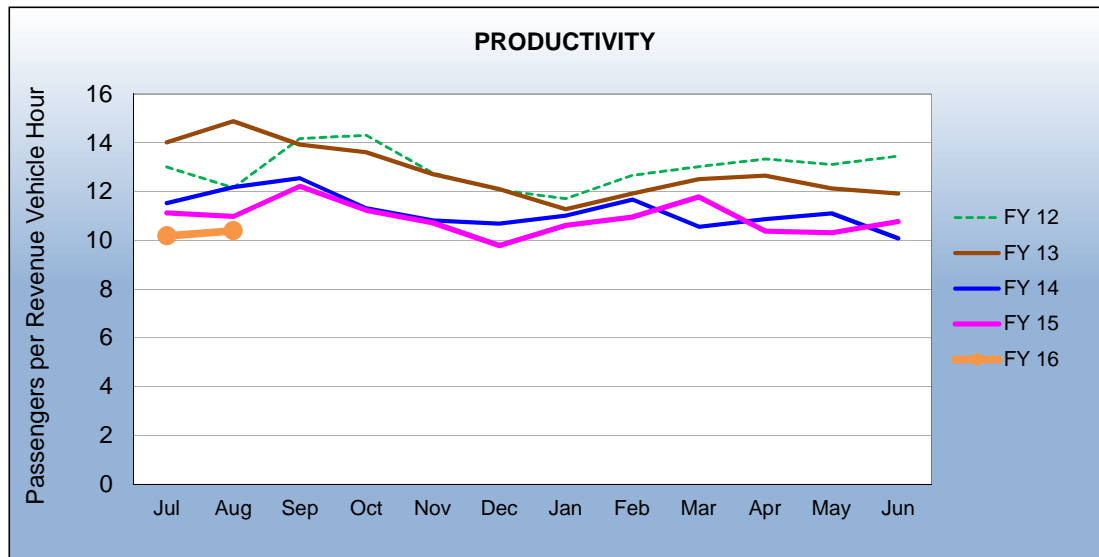
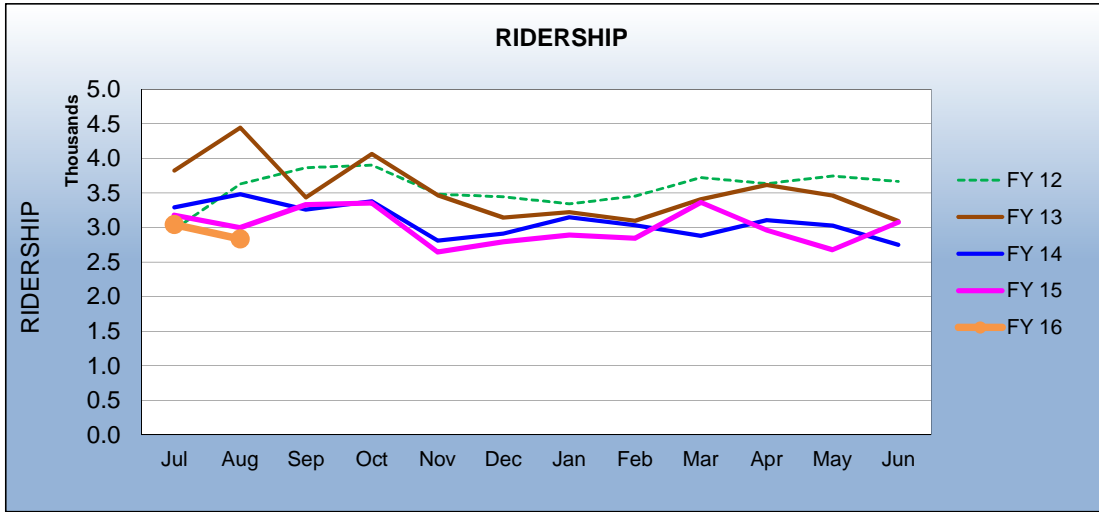
### RTC RAPID and CONNECT/ROUTE 1 FISCAL YEAR COMPARISONS



RTC Transit Operating Statistics

<b>RTC INTERCITY</b>						
<b>ROLLING 12 MONTH COMPARISON</b>						
<b>Most Recent 12 Months</b>			<b>Percent Change</b>	<b>Previous 12 Months</b>		
<b>Month</b>	<b>Year</b>	<b>Ridership</b>		<b>Month</b>	<b>Year</b>	<b>Ridership</b>
Sep	2014	3,331	2.2%	Sep	2013	3,259
Oct		3,352	-0.8%	Oct		3,379
Nov		2,644	-5.9%	Nov		2,809
Dec		2,794	-4.1%	Dec		2,912
Jan	2015	2,893	-8.0%	Jan	2014	3,146
Feb		2,843	-6.2%	Feb		3,030
Mar		3,365	16.9%	Mar		2,879
Apr		2,962	-4.6%	Apr		3,106
May		2,676	-11.7%	May		3,029
Jun		3,076	11.9%	Jun		2,748
Jul		3,041	-4.3%	Jul		3,177
Aug		2,832	-5.4%	Aug		2,995
<b>TOTAL</b>		<b>35,809</b>	<b>-1.8%</b>	<b>TOTAL</b>		<b>36,469</b>

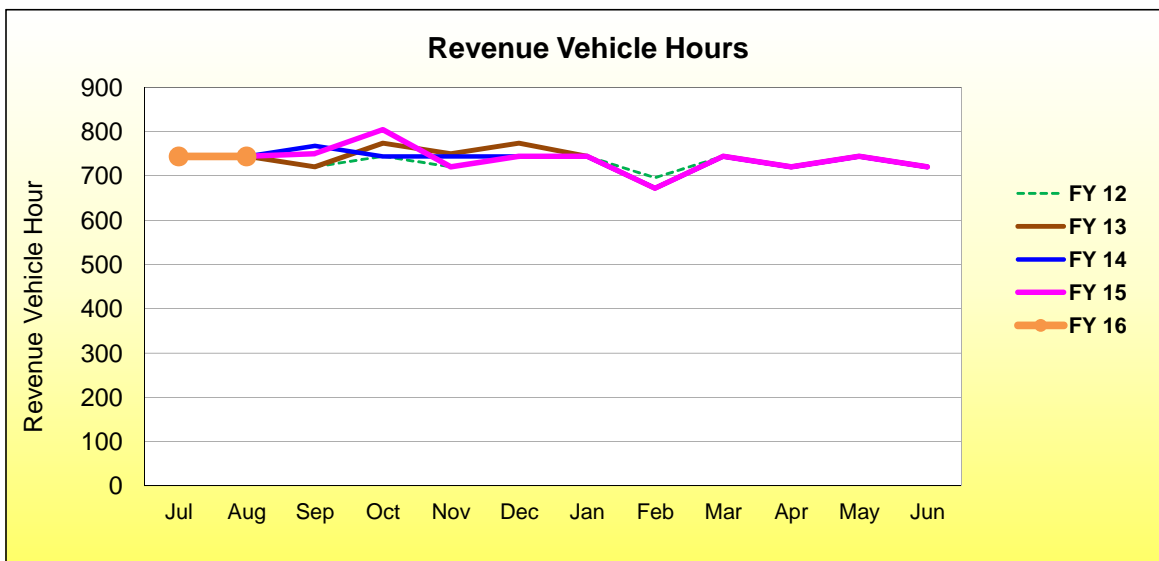
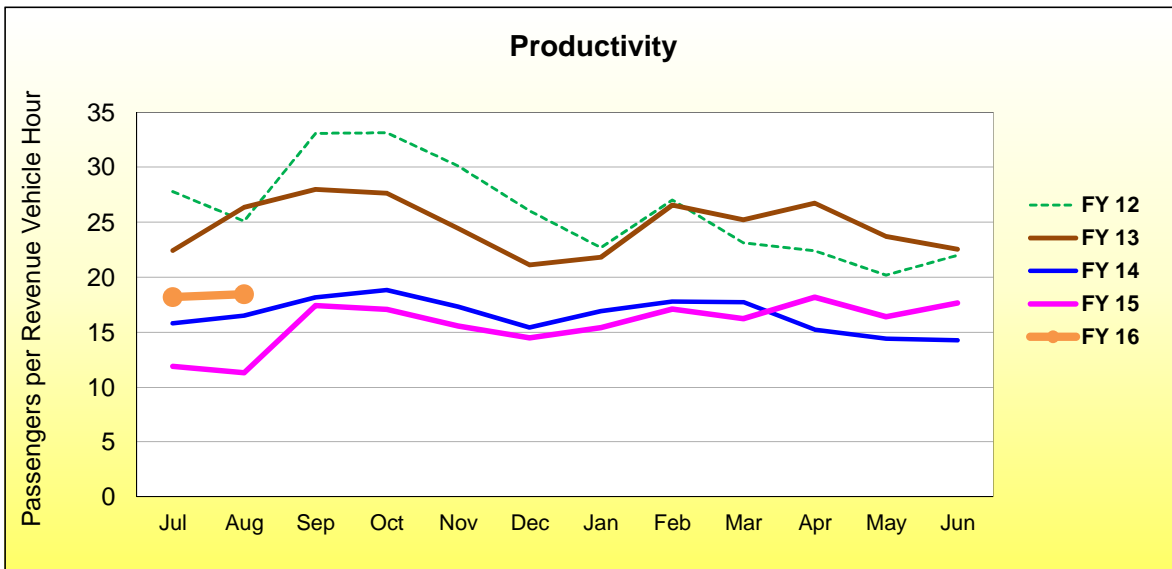
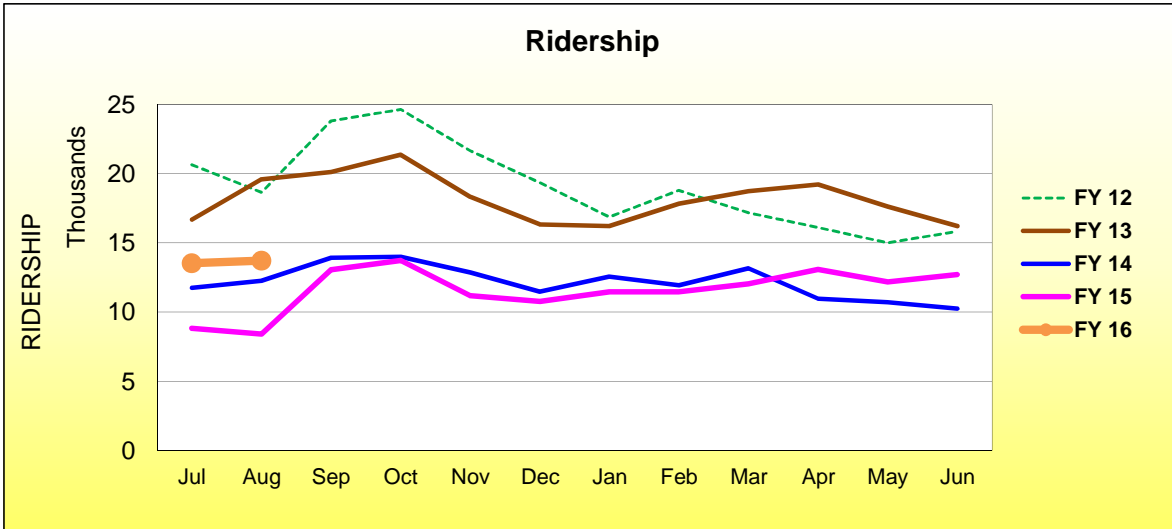
### RTC INTERCITY FISCAL YEAR COMPARISONS



RTC Transit Operating Statistics

<b>SIERRA SPIRIT</b>						
<b>ROLLING 12 MONTH COMPARISON</b>						
<b>Most Recent 12 Months</b>			<b>Percent Change</b>	<b>Previous 12 Months</b>		
<b>Month</b>	<b>Year</b>	<b>Ridership</b>		<b>Month</b>	<b>Year</b>	<b>Ridership</b>
Sep	2014	13,061	-6.3%	Sep	2013	13,942
Oct		13,726	-2.0%	Oct		14,005
Nov		11,186	-13.1%	Nov		12,871
Dec		10,773	-6.1%	Dec		11,473
Jan	2015	11,457	-8.9%	Jan	2014	12,574
Feb		11,477	-3.9%	Feb		11,942
Mar		12,055	-8.5%	Mar		13,173
Apr		13,077	19.3%	Apr		10,961
May		12,192	13.9%	May		10,705
Jun		12,706	23.9%	Jun		10,257
Jul		13,527	53.0%	Jul		8,840
Aug		13,716	63.1%	Aug		8,411
<b>TOTAL</b>		<b>148,953</b>	<b>7.0%</b>	<b>TOTAL</b>		<b>139,154</b>

**SIERRA SPIRIT FISCAL YEAR COMPARISONS**



**7/1/2013 25-cent adult and 10-cent reduced fare introduced**



**RTC TRANSIT RIDERSHIP REPORT**  
**University of Nevada, Reno Wolf Pass Program**  
**FY 2016**

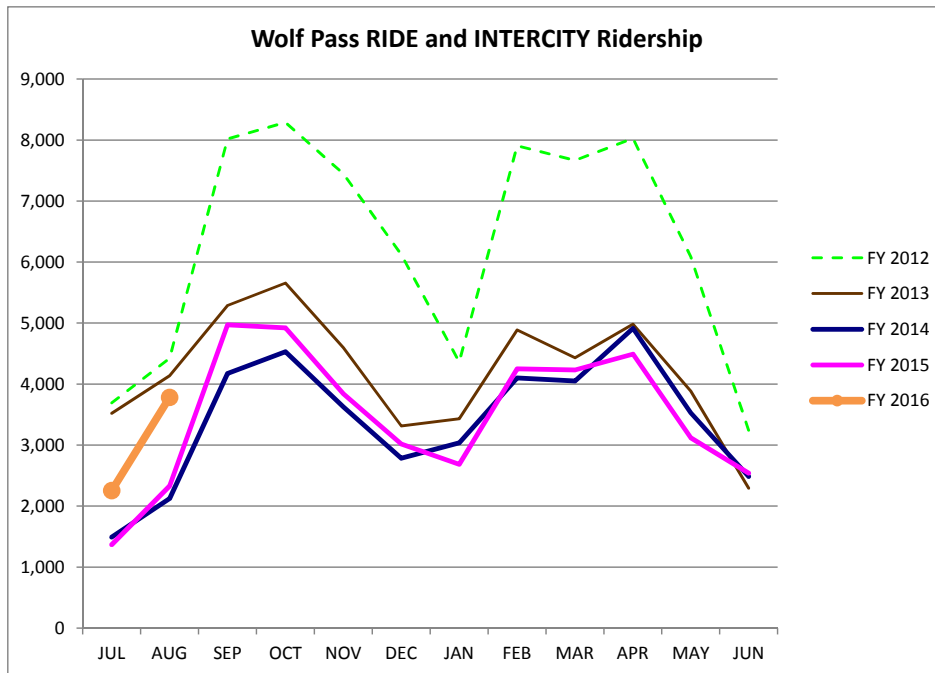
CATEGORY	JUL	AUG	SEP	OCT	NOV	DEC	JAN	FEB	MAR	APR	MAY	JUN	FYTD
RTC RIDE	2,199	3,718											5,917
RTC INTERCITY	57	66											123
RTC RIDE + INTERCITY	2,256	3,784											6,040
Percent Change	65%	62%											63%
Last Year (FY 2015)	1,368	2,331											3,699

**HISTORIC RIDERSHIP**

RTC RIDE AND RTC INTERCITY WOLF PASS

FY 2015	1,368	2,331	4,973	4,922	3,843	3,019	2,686	4,252	4,232	4,492	3,120	2,540	41,778
FY 2014	1,491	2,124	4,176	4,531	3,626	2,786	3,036	4,101	4,052	4,914	3,530	2,487	40,854
FY 2013	3,522	4,138	5,291	5,658	4,597	3,314	3,433	4,888	4,433	4,984	3,886	2,294	50,438
FY 2012	3,693	4,423	8,020	8,291	7,448	6,124	4,364	7,906	7,668	8,028	6,090	3,245	75,300
FY 2011	5,252	6,113	8,137	8,265	7,498	5,535	4,637	6,881	7,373	7,434	4,936	3,864	75,925
FY 2010	3,631	3,822	8,449	8,794	7,655	5,610	5,757	7,509	8,050	8,443	5,903	5,895	79,518
FY 2009	4,184	5,099	9,905	10,739	8,220	6,867	6,925	8,729	8,806	9,072	6,291	3,548	88,385
FY 2008	0	4,817	9,062	10,220	8,891	6,722	6,684	9,515	9,165	9,887	8,030	3,468	86,461
FY 2007	0	5,136	9,663	10,229	9,104	7,448	7,547	9,284	9,601	9,607	7,676	0	85,295
FY 2006	0	4,961	9,873	10,392	9,767	7,974	7,257	9,423	9,823	9,713	8,887	0	88,070
FY 2005	0	3,970	7,693	7,902	7,205	5,824	5,805	7,846	8,475	8,200	6,765	0	69,685
FY 2004	0	1,809	6,161	7,058	6,447	4,943	4,584	6,096	6,495	6,591	4,930	0	55,114
FY 2003	0	533	4,033	5,776	5,911	5,112	4,777	6,221	6,868	6,588	5,409	0	51,228

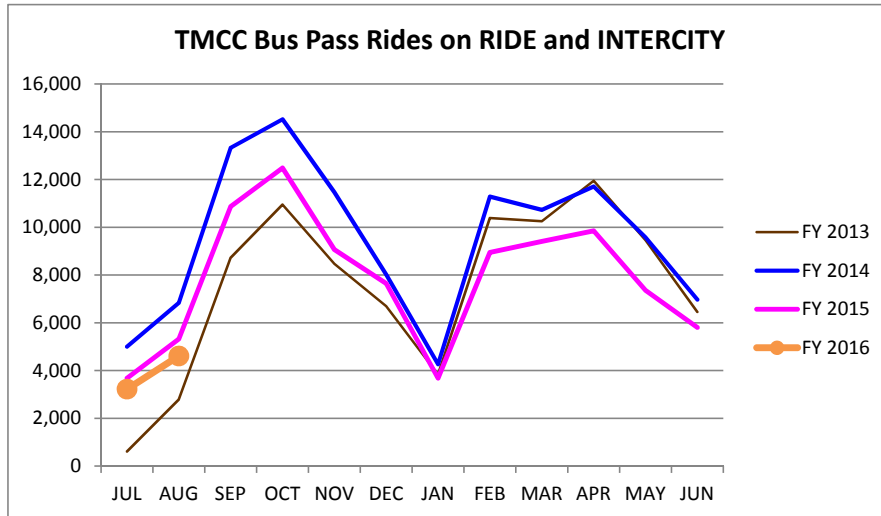
Aug 2007 data is estimated based on Sep ridership



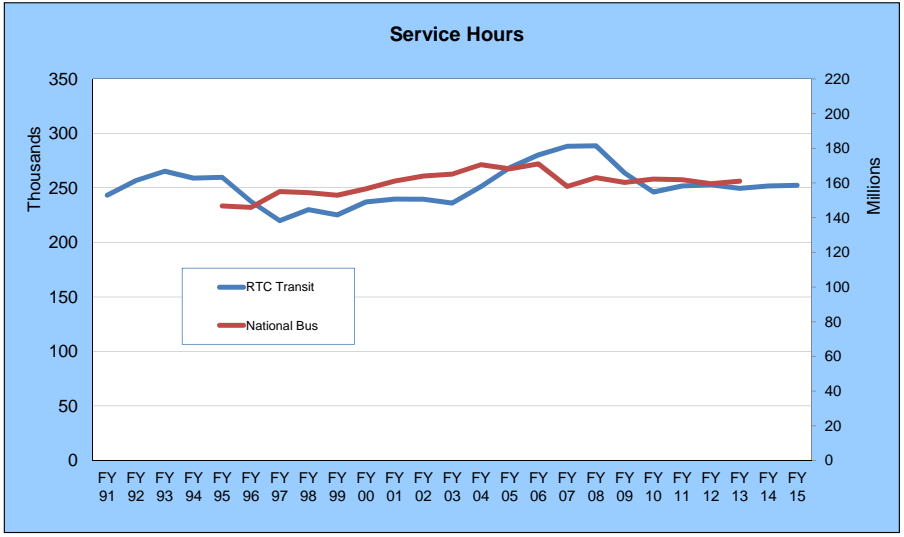
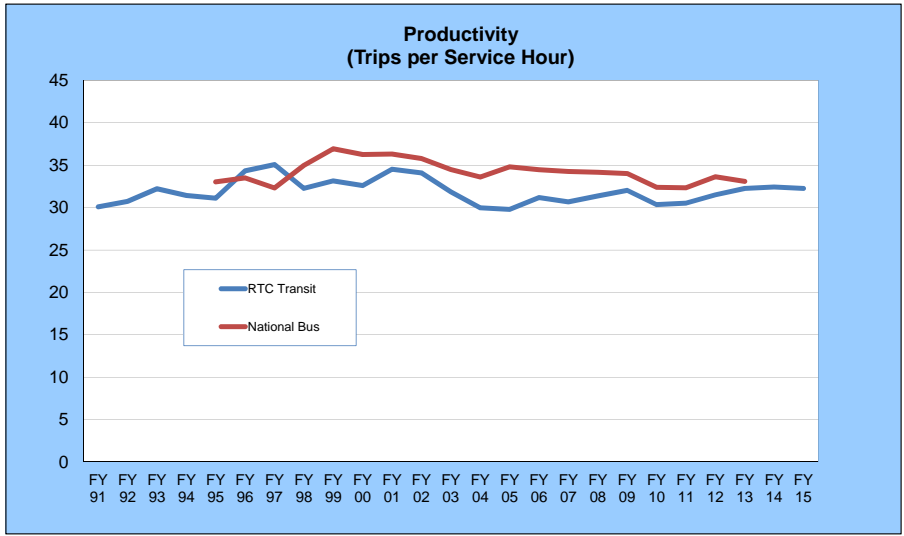
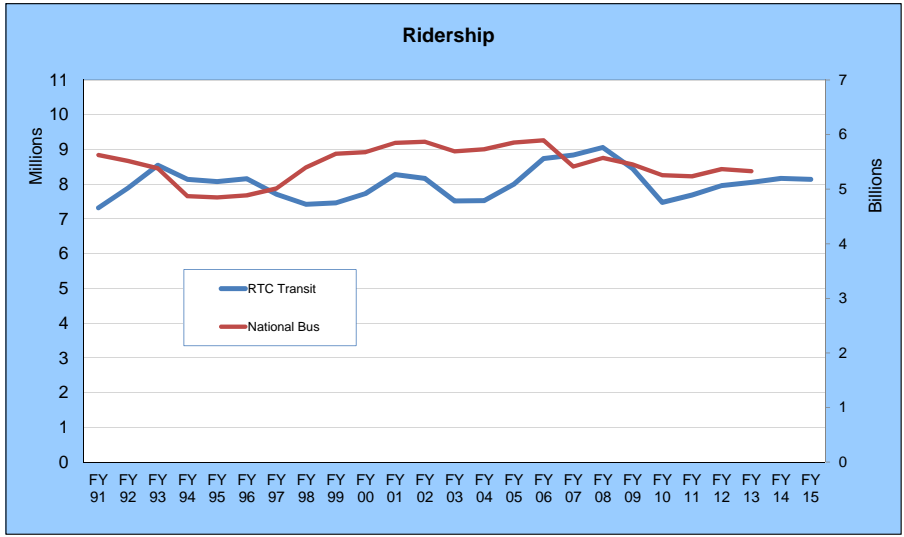
	RIDE	INTER CITY	RIDE and INTERCITY
FY 2015	39,949	1,829	41,778
FY 2014	38,471	2,383	40,854
FY 2013	46,928	3,510	50,438
FY 2012	71,438	3,862	75,300
FY 2011	72,048	3,877	75,925
FY 2010	75,283	4,235	79,518
FY 2009	82,712	5,673	88,385
FY 2008	83,966	2,495	86,461
FY 2007	82,752	2,543	85,295
FY 2006	88,070		88,070
FY 2005	69,685		69,685
FY 2004	55,114		55,114
FY 2003	51,228		51,228

**RTC TRANSIT RIDERSHIP REPORT**  
**Truckee Meadows Community College Lizard Pass Program**  
**FY 2016**

Fiscal Year	CATEGORY	JUL	AUG	SEP	OCT	NOV	DEC	JAN	FEB	MAR	APR	MAY	JUN	FYTD
FY 2016	RTC RIDE	3,210	4,599											7,809
	RTC INTERCITY	10	11											21
	<b>Total</b>	<b>3,220</b>	<b>4,610</b>											<b>7,830</b>
Perc. Change		-12%	-13%											-13%
FY 2015	Total	3,678	5,321											8,999
<b>Historic Ridership</b>														
RTC RIDE + INTERCITY	FY 2015	3,678	5,321	10,868	12,481	9,067	7,647	3,683	8,948	9,407	9,852	7,356	5,804	94,112
	FY 2014	5,003	6,837	13,330	14,523	11,462	8,019	4,265	11,287	10,725	11,706	9,574	6,969	113,700
	FY 2013	611	2,791	8,723	10,948	8,471	6,694	3,837	10,389	10,254	11,950	9,458	6,457	90,583
RTC RIDE	FY 2015	3,678	5,319	10,861	12,463	9,042	7,621	3,679	8,936	9,401	9,839	7,343	5,783	93,965
	FY 2014	4,995	6,825	13,319	14,507	11,453	8,014	4,251	11,276	10,715	11,682	9,565	6,963	113,565
	FY 2013	611	2,790	8,709	10,929	8,458	6,682	3,835	10,389	10,254	11,945	9,458	6,455	90,515
RTC INTERCITY	FY 2015	0	2	7	18	25	26	4	12	6	13	13	21	147
	FY 2014	8	12	11	16	9	5	14	11	10	24	9	6	135
	FY 2013	0	1	14	19	13	12	2	0	0	5	0	2	68

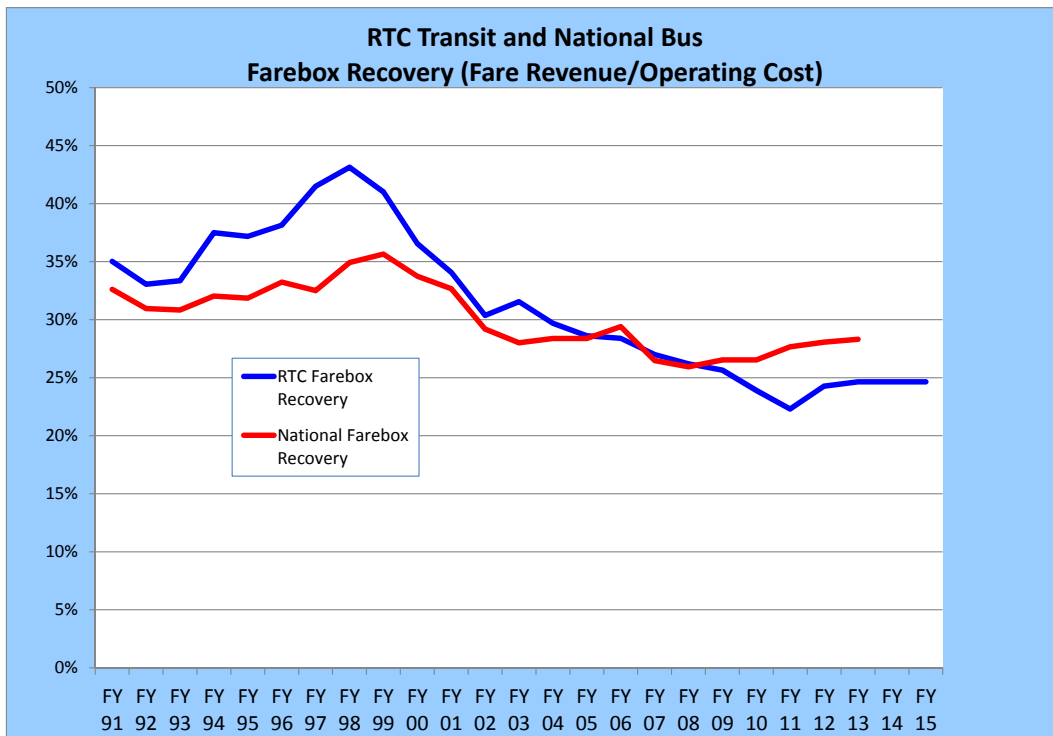
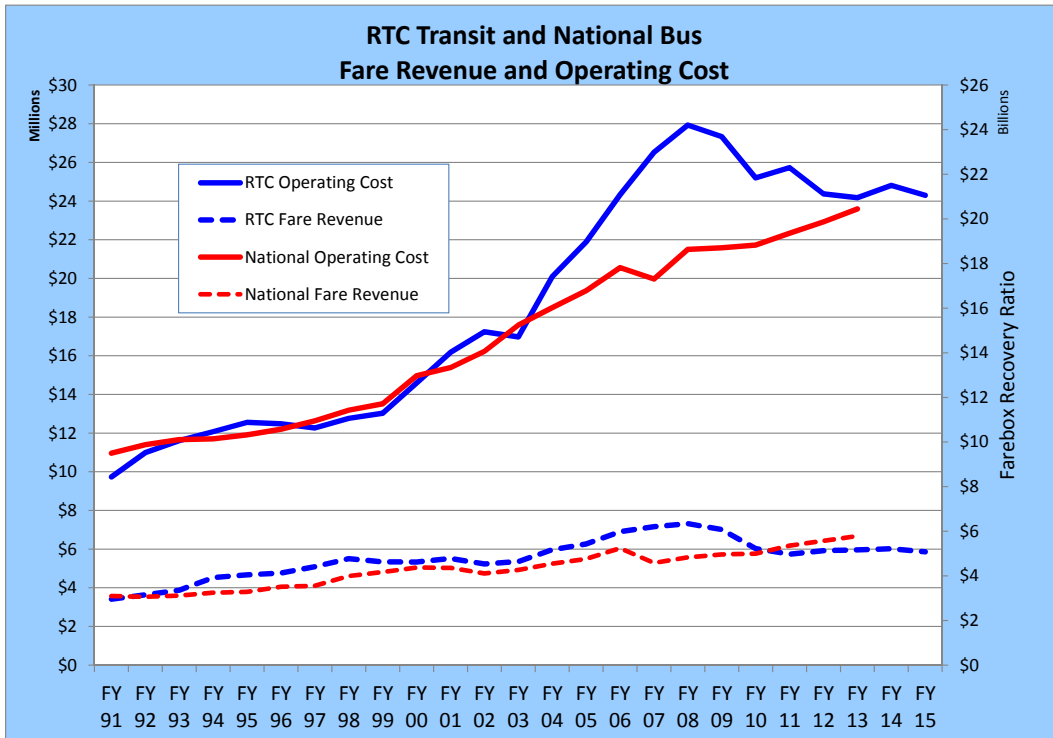


# RTC Transit and National Bus Comparison



National bus data is based on APTA data

# RTC Transit and National Bus Comparison



National bus data is based on APTA data

### RTC Transit Ridership by Fare Category

	Adult	Reduced	Cash	Pass
FY 96	5,561,385	2,302,742	3,796,142	2,560,267
FY 97	5,160,106	2,271,790	3,464,511	2,529,988
FY 98	4,771,790	2,380,017	3,115,490	2,584,627
FY 99	4,716,813	2,480,895	3,065,373	2,653,028
FY 00	4,788,053	2,648,375	2,965,141	3,072,292
FY 01	5,108,696	2,908,807	2,988,850	3,488,200
FY 02	5,005,458	2,910,928	2,803,403	3,616,613
FY 03	4,594,536	2,629,981	2,603,683	3,169,422
FY 04	4,580,359	2,626,544	2,539,373	3,088,648
FY 05	4,870,916	2,694,693	2,582,039	2,790,914
FY 06	5,148,290	2,983,738	2,498,794	3,161,312
FY 07	4,991,833	3,226,773	2,283,889	3,503,177
FY 08	4,907,995	3,410,862	2,159,096	3,795,752
FY 09	4,416,321	3,353,032	1,876,468	3,843,590
FY 10	3,904,492	3,063,695	1,647,009	3,614,940
FY 11	4,047,258	3,150,680	1,689,314	3,730,268
FY 12	4,163,468	3,355,216	1,768,579	3,759,342
FY 13	4,438,622	3,612,328	1,784,653	3,800,928
FY 14	4,496,292	3,669,043	1,809,777	4,120,412
FY 15	4,403,004	3,737,904	1,770,525	4,202,882

