



REGIONAL TRANSPORTATION COMMISSION
Public Transportation • Streets and Highways • Planning



RTC TRANSIT OPERATING STATISTICS

**RTC RIDE
RTC RAPID
RTC INTERCITY
SIERRA SPIRIT**

October 2015

RTC TRANSIT OPERATING STATISTICS REPORT

TABLE OF CONTENTS

RTC Transit Highlights	Page ii
RTC Transit Summary.....	Page iv
System Reports.....	Page 1
Revenue and Cost.....	Page 4
Economic Data	Page 5
Route Comparison Data.....	Page 8
Monthly Operating Statistics.....	Page 10
RTC RAPID.....	Page 20
RTC INTERCITY	Page 22
SIERRA SPIRIT	Page 24
University Pass Program.....	Page 26
National Comparisons	Page 28
Historic Ridership by Fare Category.....	Page 30

RTC TRANSIT HIGHLIGHTS

October 2015

RTC Transit

- There were 696,937 rides in October, **4.6% lower** than last October.
- Weighted average daily ridership at 23,308 was **0.1% higher** than last October. (There was one less weekday and one more Saturday this month compared with last year.)
- Service hours (revenue vehicle hours) were **1.1% higher** this month compared with last year
- Productivity this month at 31.6 passengers per service hour was **5.6% lower** than last year.
- There were 8.04 million rides over the most recent twelve months. This is **2.5% lower** than the previous twelve months
- Over the most recent twelve months, operating cost was \$23.3 million and fare revenue was \$5.8 million. Net operating cost was \$17.5 million **down 7.7%** compared with the previous 12-month period. Operating cost was **down 6.6%** and revenue was **down 3.2%** compared to the previous 12-month period.
- The farebox recovery ratio (revenue divided by cost) was 24.8%, **up 0.9 percentage points**

External Impacts on Ridership

Climate impact was less favorable this October compared with last October. While average temperature at 59.9°F was 1.5°F warmer than last year, there were six days of rain this month compared with one last year.

The price of gas in Reno at \$2.71 was **18% lower** than last year. High gas prices tend to encourage car drivers to use transit, and low gas prices have the reverse effect. While we experienced a ridership increase from the economic rebound, continued employment also may provide people with sufficient income to buy and drive a car. **According to Experian, loans for new and used vehicles hit an all-time high of \$968 billion in the third quarter of calendar year 2015.**

As a result of the Great Recession, Reno-Sparks employment fell from an all-time high of 217,994 jobs in September 2007 to a ten-year low of 191,352 in January 2011. The number of unemployed people in Reno-Sparks more than tripled from 9.5K in September 2007 to almost 31K in January 2011.

However, employment has rebounded. Preliminary data shows 13.5K unemployed people in September 2015. The unemployment rate was 5.9%. **This is the first time unemployment has been below 6% since December 2007. There were 217K jobs in September, the highest since October 2007 and only 1,326 jobs fewer than the all-time high.** Nevada's unemployment rate for October was 6.6%, **the lowest rate**

since June 2008. The national unemployment rate was 5.0%, **the lowest rate since April 2008.**

While these numbers have rebounded to those before the Great Recession, this does not necessarily mean everyone who lost a job has gained a job or even an equivalent job or at an equivalent wage. It should be noted that the unemployment figures do not include people who have given up and not sought employment in the last four weeks as well as part-time and temporary workers. **The labor force participation rate for October was 62.4% which is tied for the lowest since October 1977.** The labor force participation rate had been steadily increasing from the 60's throughout the 80's as a result of more women entering the work force as well as people living longer and retiring later, however, it has been declining since the Great Recession likely the result of younger people not being able to find jobs.

The makeup of local employment is also changing. Casino hotel jobs in Reno-Sparks have fallen to 15.0K in October. In 1996 casino hotel jobs made up 16% of total employment. It now makes up 7.1%. On the other hand, **food and drink place employment was around 8.5K in 1996 and is now at 15.1K, higher than casino hotel jobs for the first time ever.**



RTC TRANSIT SUMMARY

RTC Transit Fare Categories

- In October, adult ridership was **down 4.4%** compared with last year (page 14). Adult ridership made up 55% of total ridership. **This is the second lowest percentage ever for October.** By comparison, in October 1996, adult ridership made up 70% of total ridership.
- In October, reduced fare ridership was **down 4.9%** compared with last year. Reduced fare ridership made up 45% of total ridership, **the second highest percentage ever for October.** (Page 30 shows the steady annual growth of reduced fare ridership since FY 1996.) **There were 113K more reduced fare rides in October than 20 years ago, a 56% increase.** In FY 2015, the RTC carried 1.5 million more reduced fare rides than FY 1997.
- This month, cash ridership was **down 2.6%** compared with last year. Pass ridership **fell 4.7%** compared with last year. Pass ridership now makes up 62% of all ridership. Cash only makes up 35% of total ridership.
- Page 30 shows the steady decline of cash ridership. What is interesting is that cash ridership was on the decline before the Great Recession and may be indicative of the steady decline of tourism/gaming in the area. Also, since 2004, cash fares have also been raised much more than pass fares.

RTC Route Ridership

- Route 5 (serving Sutro St and Sun Valley) has the highest productivity in the system (excluding RTC RAPID) with 41.2 rides per service hour followed by Route 11 (serving Reno and Sparks) with 38.7.
- Route 3 (serving Northwest Reno) was the only route to experience more ridership this month **up 2.5%**. Route 18X (serving Sparks Industrial) **fell the most by 30%** followed by Route 7 (serving N Virginia St and Stead) which **fell by 15%**.



RTC RAPID

- There were 115,374 rides on RAPID this month **up 0.5%** compared with last year. At 45.2 rides per service hour, RAPID is more productive than any RTC RIDE route. There were 172,491 rides on RAPID and Route 1 combined **down 0.3%** compared with last year (page 20).

RTC INTERCITY

- There were 2,587 rides this month, **down 23%** compared with last October (page 22). At 9.1 rides per service hour, productivity is **down 19%** compared with last year. For the most recent 12 months, there were 34,971 rides, **down 4.2%** compared with the previous 12 months.

SIERRA SPIRIT

- There were 16,603 rides this month, **up 21%** compared with last October (page 24). Productivity at 22.3 rides per service hour is **31% higher** than last year. There were 153,871 rides over the most recent 12 months, **up 12%** from the previous 12 months.

University of Nevada, Reno Wolf Pass Program

- There were 6,846 Wolf Pass rides on RTC RIDE and RTC INTERCITY this month, **39% higher** than last October (page 26).

Truckee Meadows Community College Pass Program

- There were 9,509 rides this month on RIDE and INTERCITY. This is **down 24%** compared with last October.

National Comparison

- Pages 28 and 29 compare annual RTC performance data with all bus agencies in the nation. Our productivity has remained below the national average since FY 1998. The financial information has not been published by APTA for FY 2014 and FY 2015. Our operating cost increased faster than the nation from FY 2003 to FY 2008 but has been declining since. Our farebox recovery ratio had exceeded the national average until FY 2006. (Keep in mind the limitations of comparing the RTC to the nation. One difference is how our economy suffered more from the Great Recession than the rest of the country, although our economy grew faster than the rest of the nation before that point. Other transit agencies may have also acquired light rail and taken rides away from bus transit. National bus includes BRT and commuter bus service.)



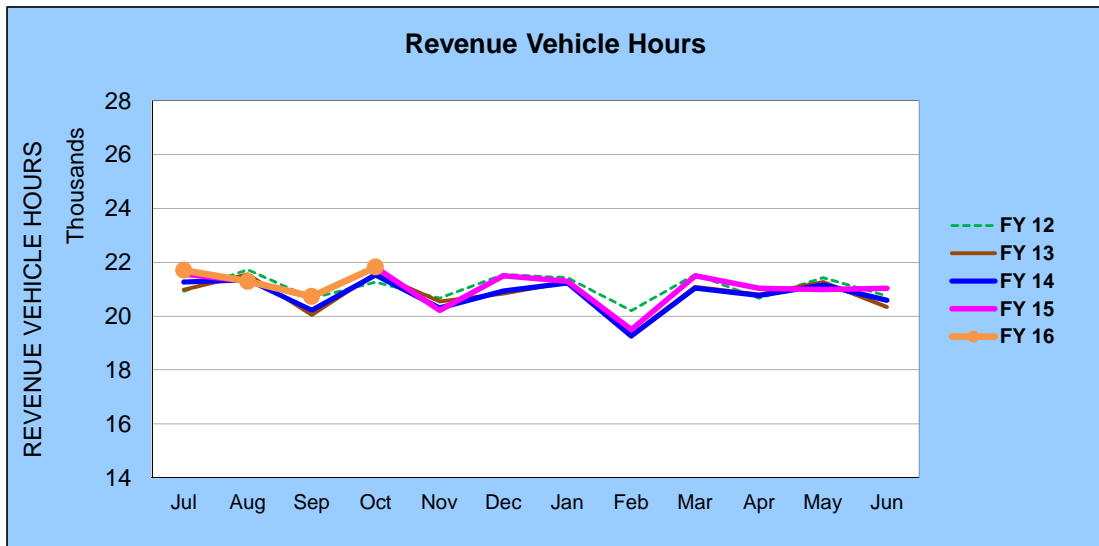
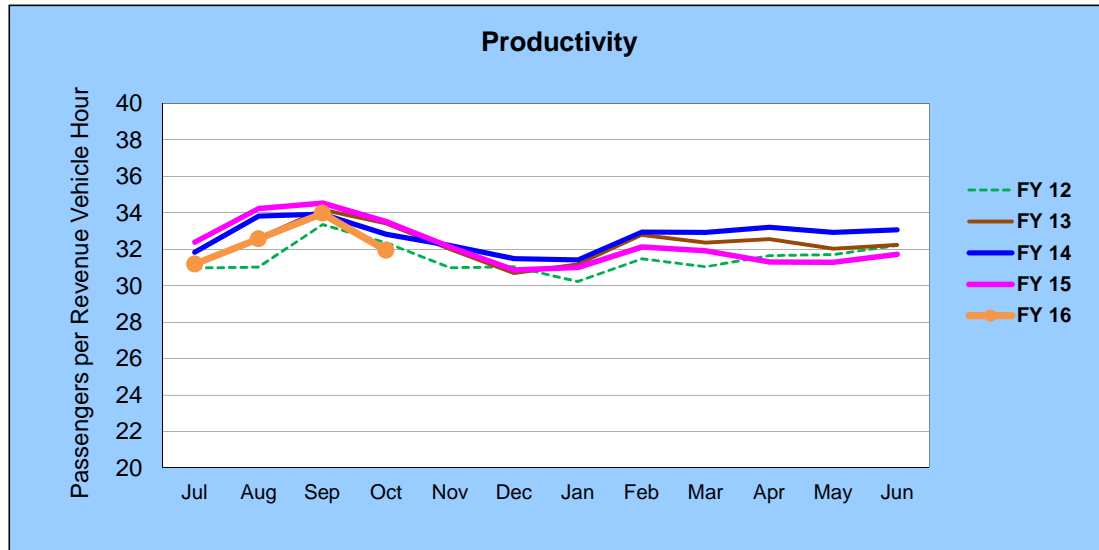
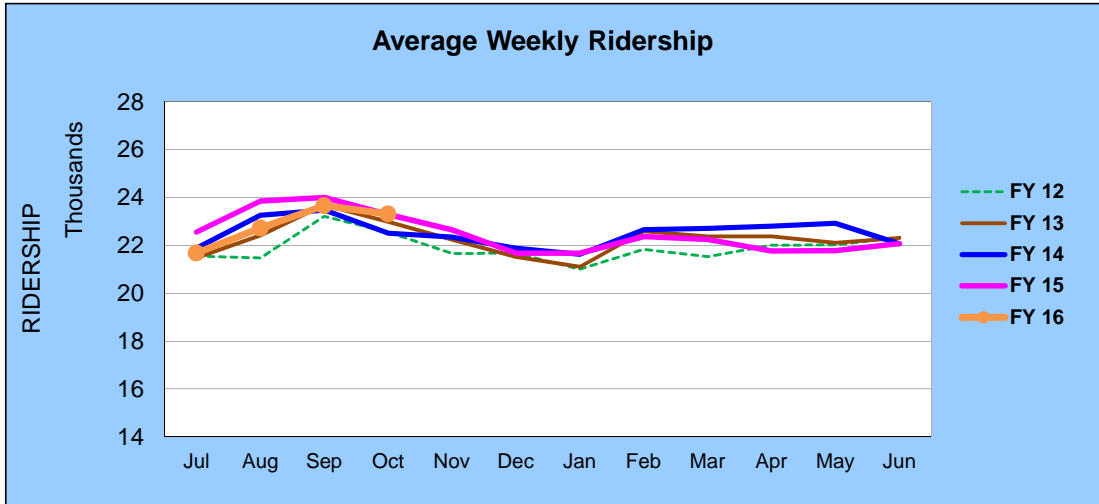
RTC Transit Operating Statistics

RTC Transit						
ROLLING 12 MONTH RIDERSHIP COMPARISON						
Most Recent 12 Months			Percent Change	Previous 12 Months		
Month	Year	Ridership		Month	Year	Ridership
Nov	2014	649,337	-0.7%	Nov	2013	653,794
Dec		663,553	0.7%	Dec		659,137
Jan	2015	660,211	-1.0%	Jan	2014	666,895
Feb		626,117	-1.3%	Feb		634,344
Mar		686,118	-0.9%	Mar		692,568
Apr		658,441	-4.5%	Apr		689,582
May		656,530	-5.8%	May		696,631
Jun		667,123	-2.0%	Jun		680,533
Jul		676,591	-3.1%	Jul		698,063
Aug		693,420	-4.9%	Aug		728,886
Sep		703,989	-1.7%	Sep		715,832
Oct		696,937	-4.6%	Oct		730,697
TOTAL		8,038,367	-2.5%	TOTAL		8,246,962

RTC Transit includes RTC RIDE, RTC RAPID, RTC INTERCITY, & RTC SIERRA SPIRIT

RTC Transit

FISCAL YEAR COMPARISONS

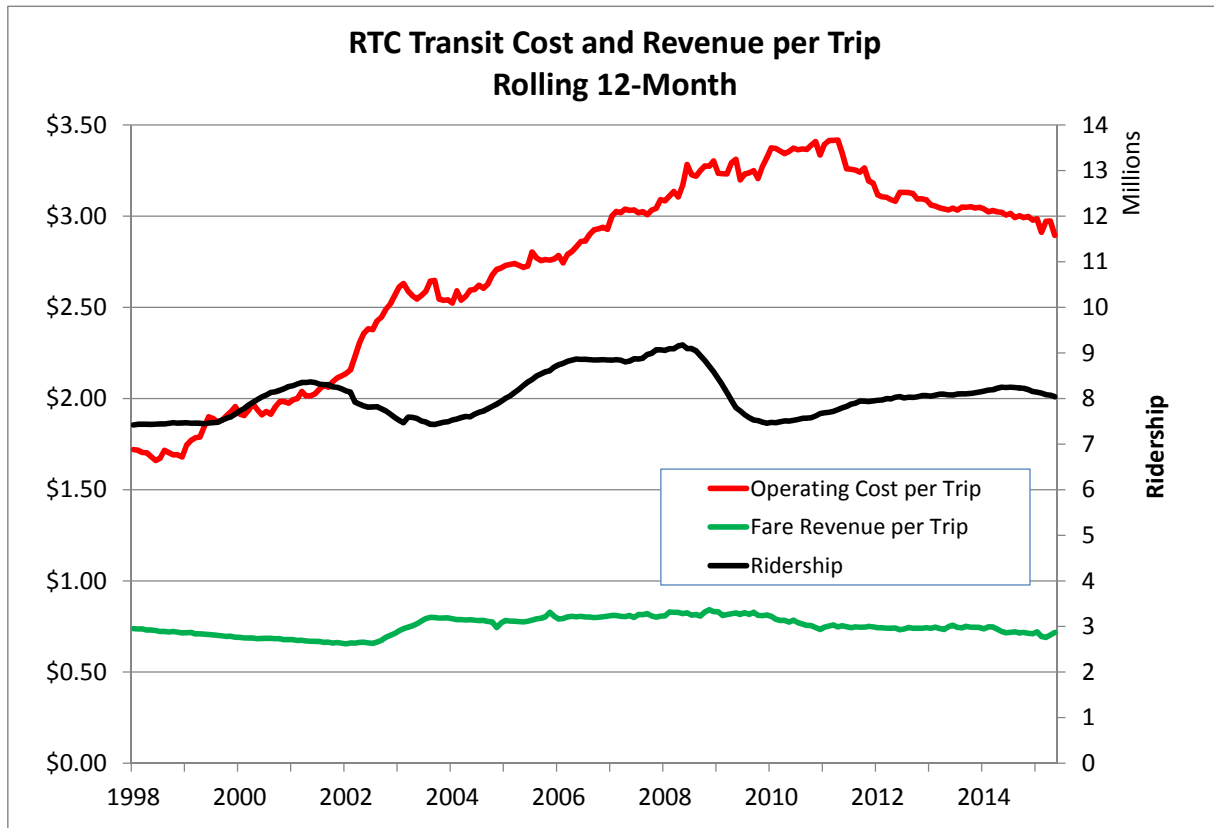
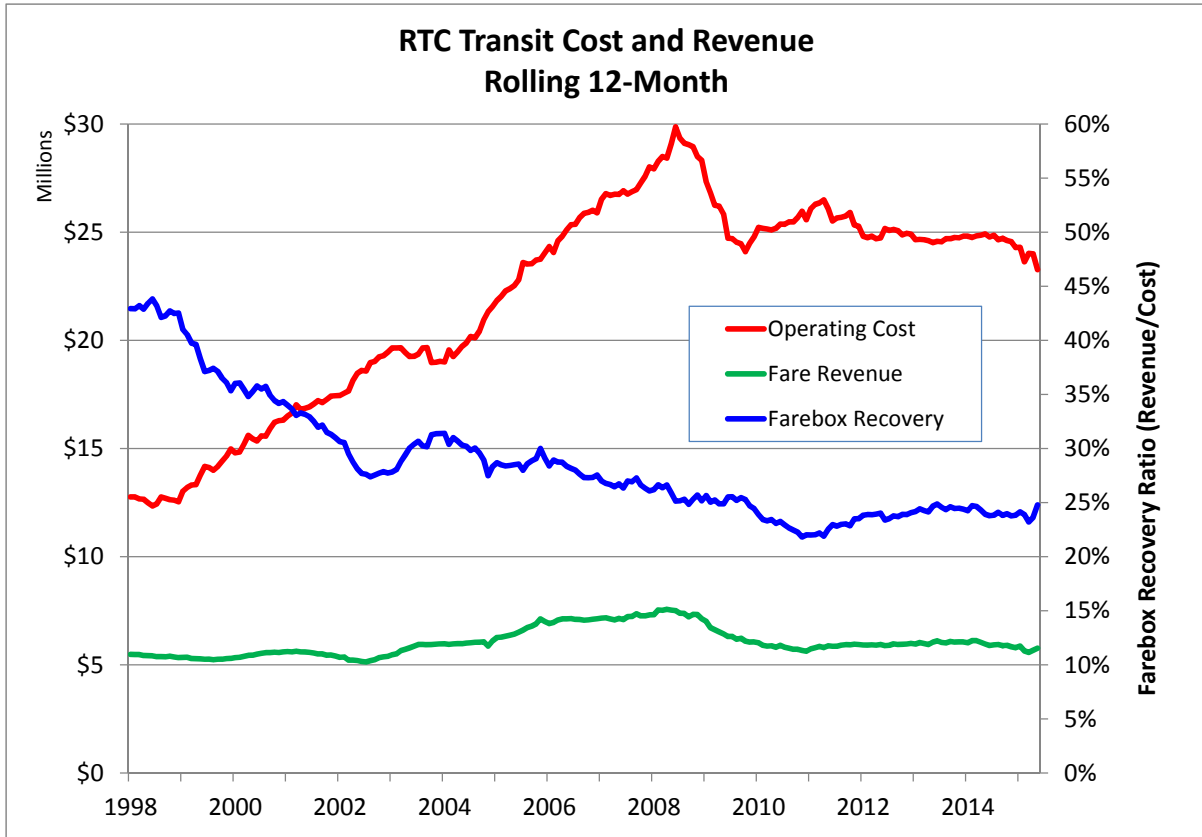


RTC Transit

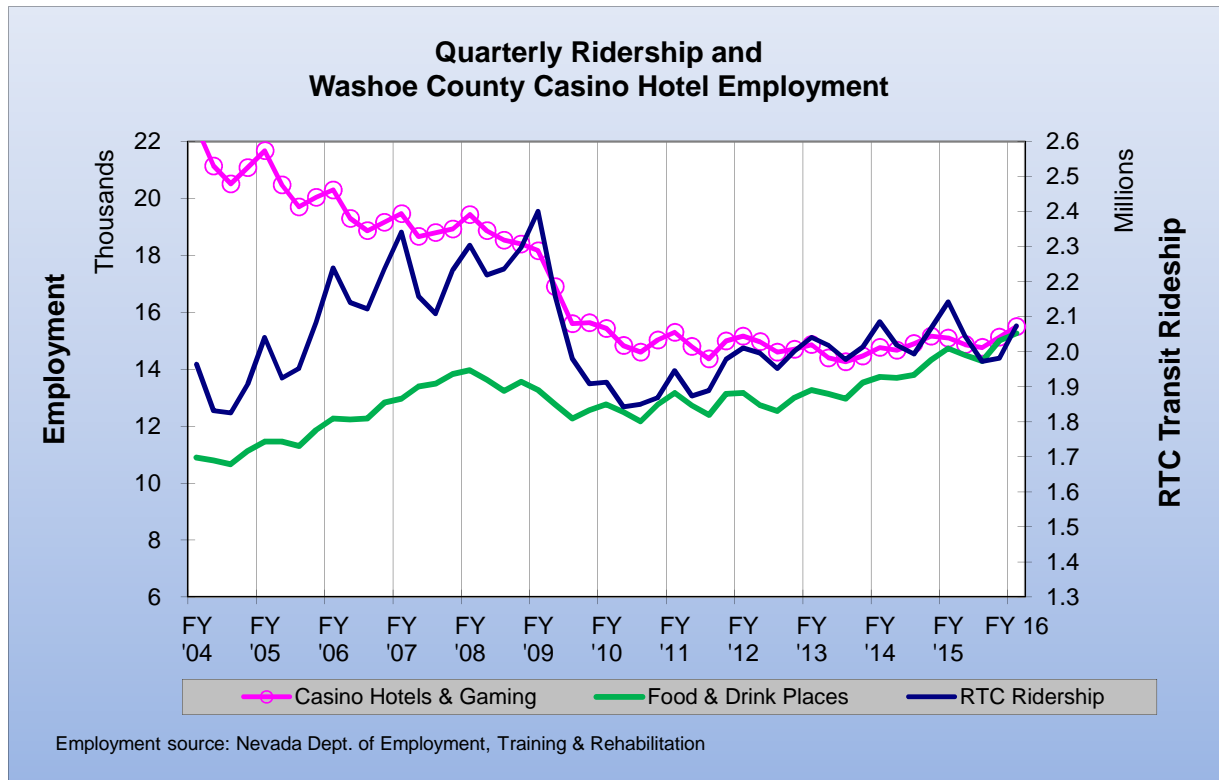
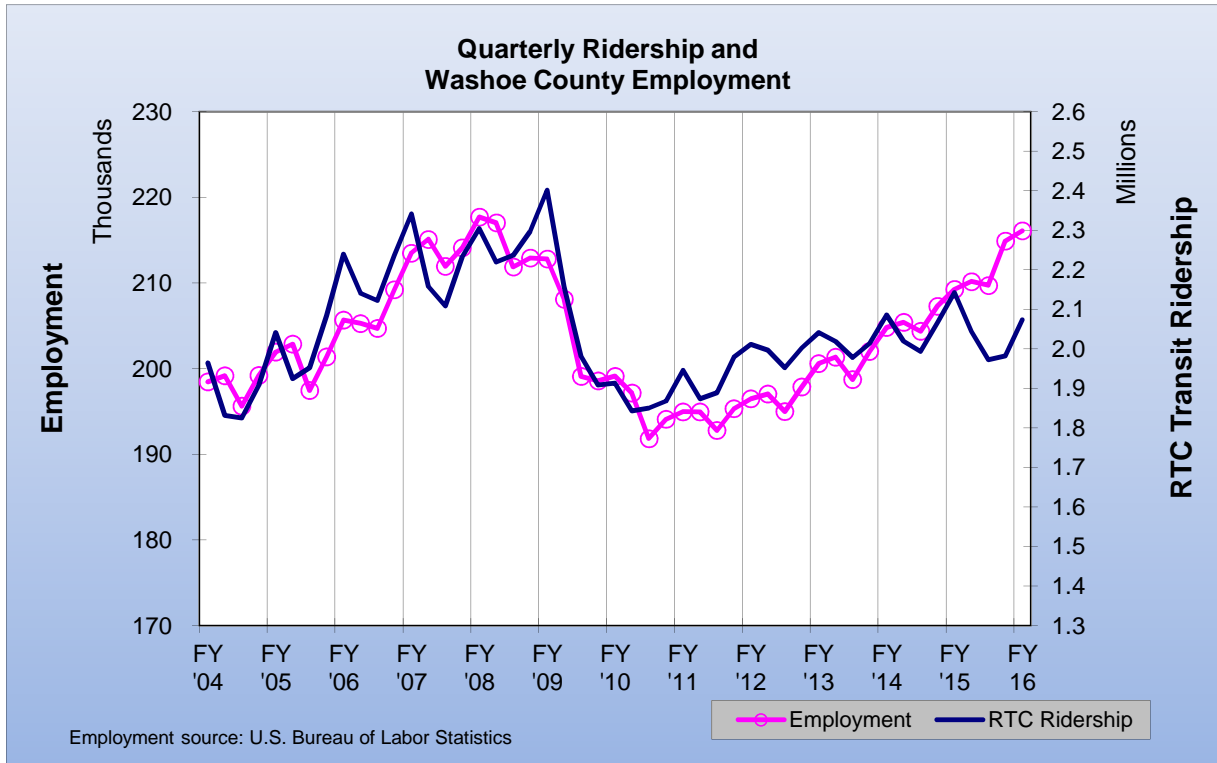
WEIGHTED AVERAGE DAILY RIDERSHIP							
Month	FY 16	Perc. Change From:			FY 15	FY 14	FY 13
		FY 15	FY 14	FY 13			
Jul	21,676	-3.9%	-0.9%	0.9%	22,558	21,876	21,480
Aug	22,719	-4.7%	-2.3%	1.3%	23,851	23,261	22,418
Sep	23,655	-1.4%	0.8%	-0.2%	24,001	23,465	23,691
Oct	23,308	0.1%	3.5%	1.4%	23,293	22,514	22,994
Nov					22,648	22,352	22,235
Dec					21,673	21,886	21,515
Jan					21,667	21,627	21,100
Feb					22,361	22,655	22,589
Mar					22,245	22,708	22,377
Apr					21,769	22,800	22,378
May					21,776	22,921	22,101
Jun					22,067	22,890	22,306

Weighted Avg. Daily Ridership = (avg. weekday X 5) + avg. Saturday + avg. Sunday) / 7
 Holidays are excluded from the weighted average.

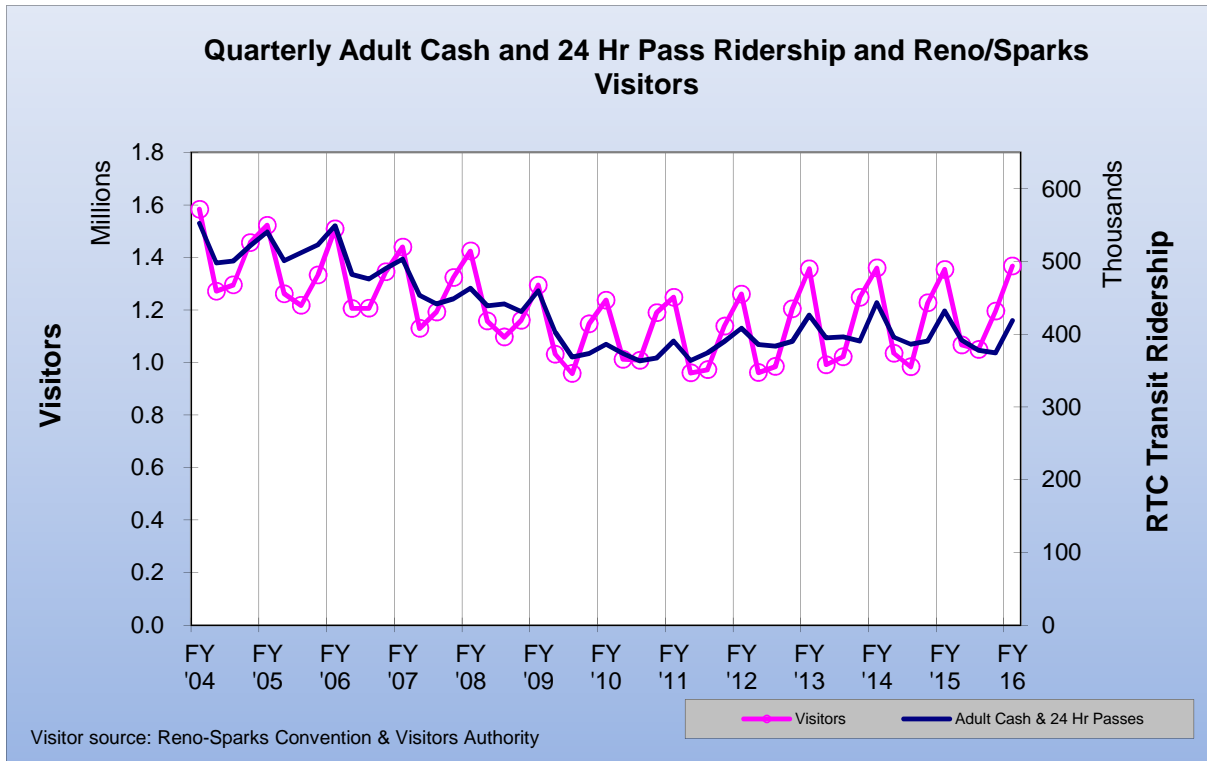
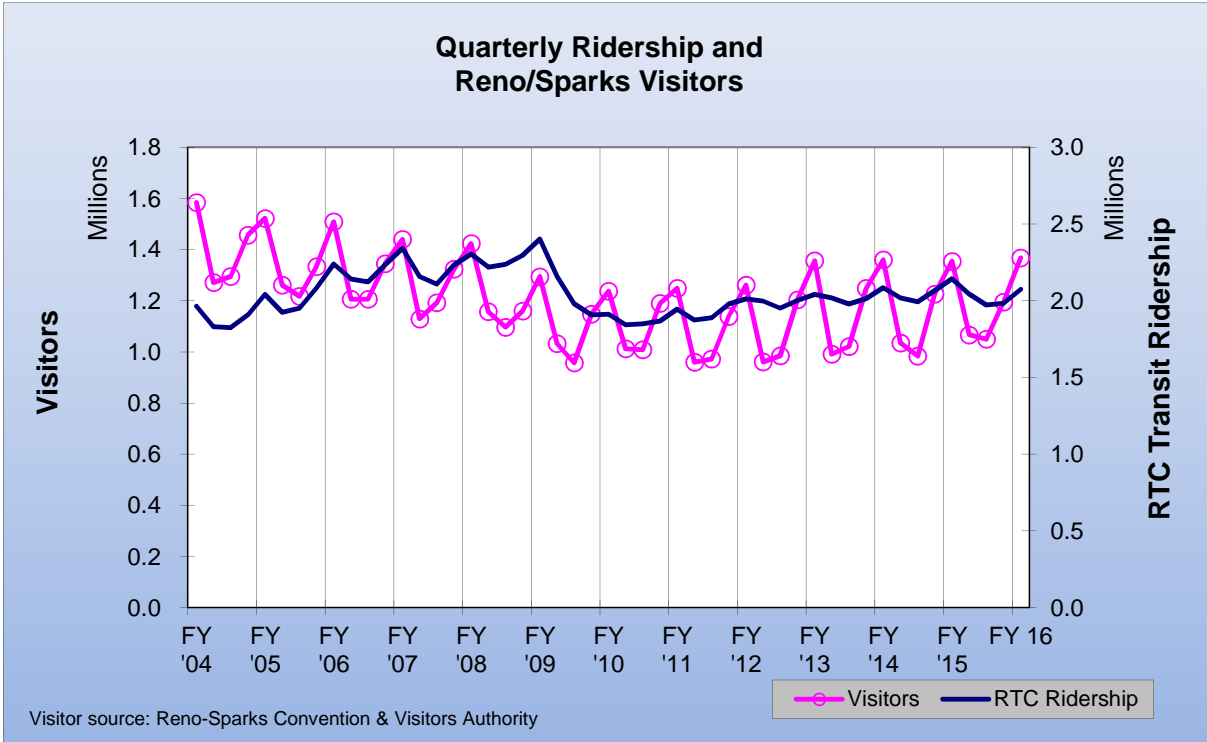
WEEKDAY, SATURDAY, AND SUNDAY RIDERSHIP ROLLING TWELVE MONTH COMPARISON									
Month	Weekday			Saturday			Sunday		
	Recent 12 Mos.	Percent Change	Previous 12 Mos.	Recent 12 Mos.	Percent Change	Previous 12 Mos.	Recent 12 Mos.	Percent Change	Previous 12 Mos.
Nov	25,696	2.6%	25,044	16,824	-4.7%	17,653	13,235	-2.6%	13,589
Dec	24,240	-1.6%	24,624	17,156	1.8%	16,847	13,356	0.9%	13,235
Jan	24,323	-0.2%	24,363	16,888	2.4%	16,499	13,166	0.7%	13,074
Feb	25,360	-0.4%	25,455	16,810	-6.0%	17,882	12,921	-3.8%	13,429
Mar	24,980	-2.2%	25,553	17,504	-1.5%	17,775	13,307	-0.8%	13,416
Apr	24,452	-4.5%	25,591	17,205	-5.2%	18,144	12,918	-4.3%	13,500
May	24,281	-5.5%	25,684	17,566	-3.6%	18,218	13,462	-2.5%	13,811
Jun	24,623	-3.9%	25,632	17,680	-2.2%	18,080	13,673	-2.3%	13,990
Jul	24,129	-4.6%	25,289	17,456	-1.6%	17,743	13,626	-0.7%	13,719
Aug	25,433	-3.9%	26,477	18,232	-7.4%	19,679	13,635	-8.5%	14,895
Sep	26,410	-2.3%	27,044	19,040	1.2%	18,808	14,491	3.6%	13,985
Oct	26,456	1.1%	26,168	17,851	-2.2%	18,251	13,028	-6.7%	13,960



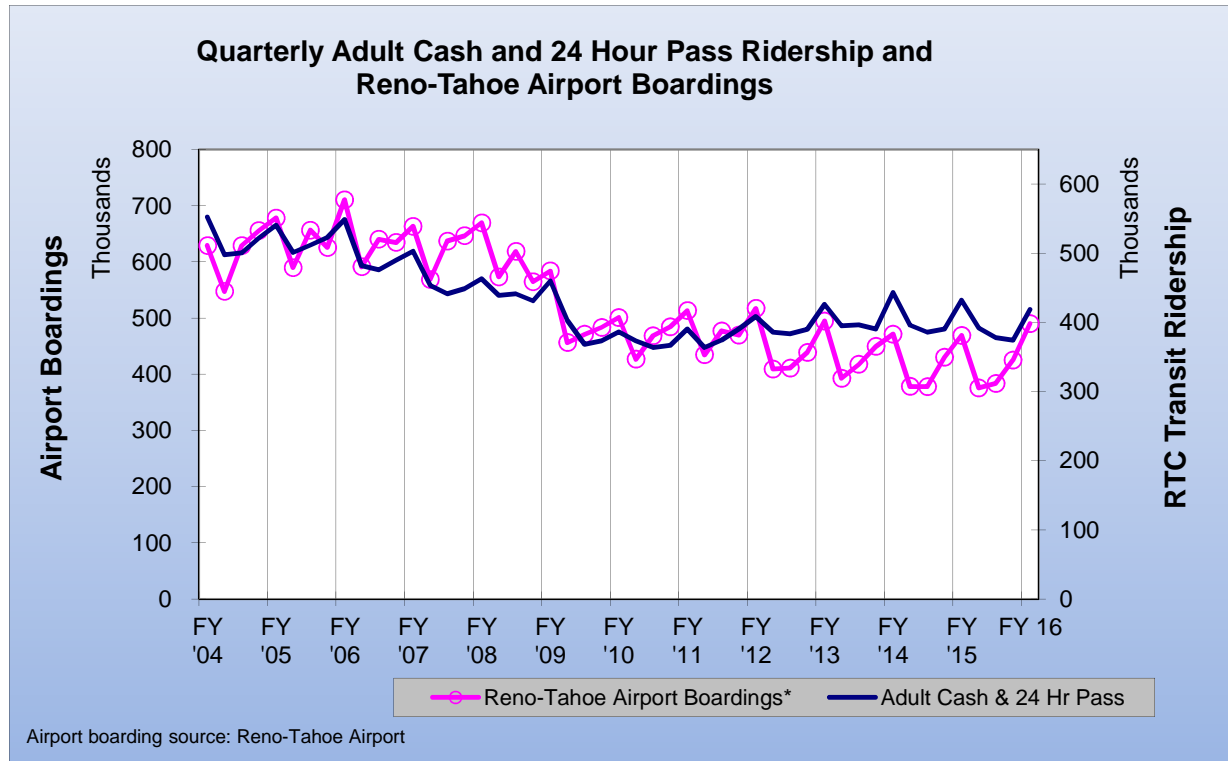
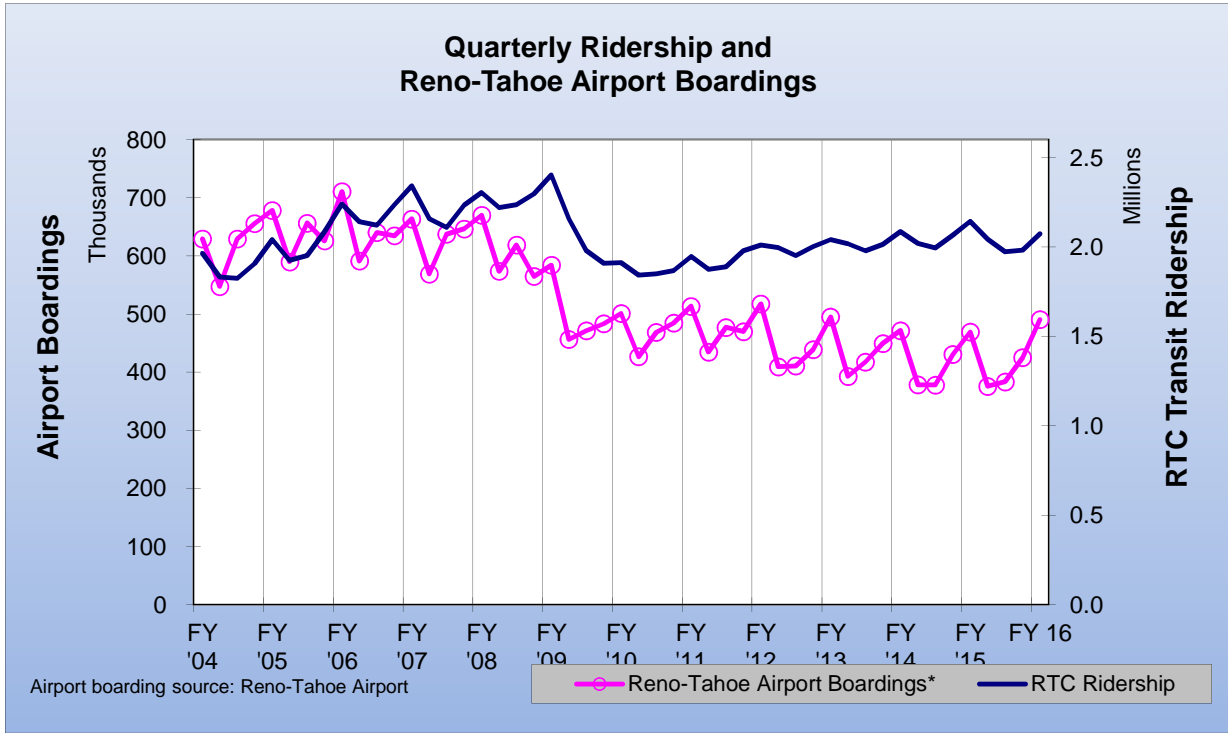
RTC Transit



RTC Transit



RTC Transit

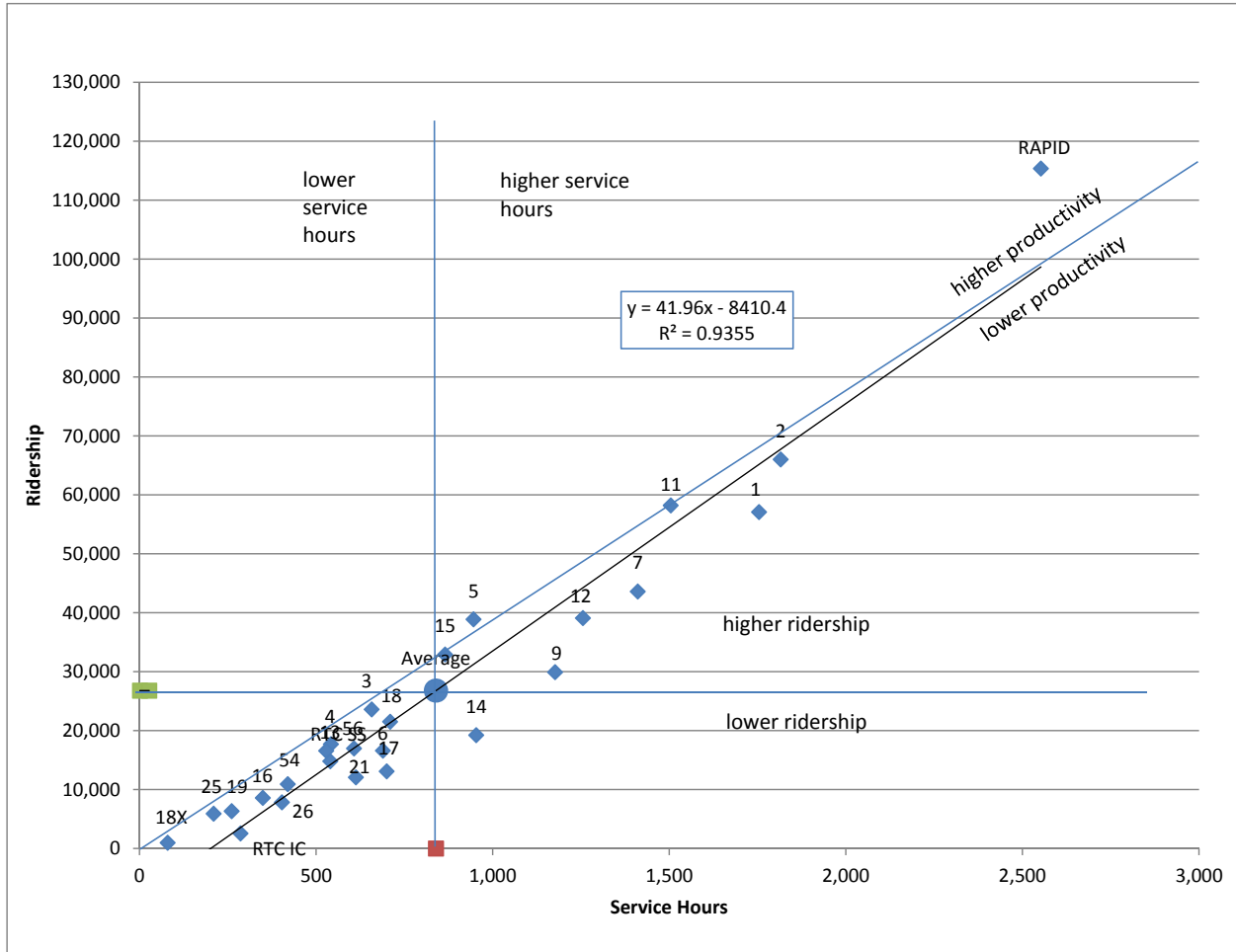


RTC ROUTE COMPARISON REPORT OCTOBER 2015

Route *	Productivity	Route	Svs Hours Change Fr. Last Year	Route	Ridership	Route	Ridership Change From Last Year
RAPID	45.2	1	3.2%	RAPID	115,374	SS	21.0%
5	41.2	26	2.6%	2	66,034	3	2.5%
11	38.7	17	2.2%	11	58,235	RAPID	0.5%
15	38.1	54	2.2%	1	57,117	2	-0.1%
2	36.4	RAPID	2.1%	7	43,626	26	-1.2%
3	36.0	16	1.9%	12	39,116	1	-1.9%
4	32.7	13	1.7%	5	38,918	12	-3.0%
1	32.6	7	1.7%	15	32,934	17	-3.0%
TOTAL	31.9	4	1.6%	9	29,942	6	-3.2%
SS	31.4	21	1.2%	3	23,623	56	-3.8%
12	31.2	3	1.0%	18	21,516	TOTAL	-4.6%
7	30.9	2	0.9%	14	19,239	16	-5.7%
18	30.3	6	0.9%	4	17,732	54	-5.9%
25	28.3	11	0.9%	56	17,000	19	-6.9%
56	28.0	56	0.8%	6	16,614	21	-7.0%
13	27.4	9	0.8%	SS	16,603	15	-7.1%
54	26.1	12	0.7%	13	14,816	5	-7.2%
9	25.5	5	0.6%	17	13,099	14	-7.5%
16	24.7	15	0.4%	21	12,088	13	-7.6%
19	24.4	14	0.1%	54	10,937	4	-8.0%
6	24.1	TOTAL	0.1%	16	8,621	9	-8.4%
14	20.2	18	-0.9%	26	7,865	18	-9.8%
21	19.7	25	-1.2%	19	6,363	11	-10.1%
26	19.5	18X	-4.3%	25	5,936	25	-10.9%
17	18.7	RTC IC	-4.3%	RTC IC	2,587	7	-15.0%
18X	12.7	19	-4.3%	18X	1,002	RTC IC	-22.8%
RTC IC	9.1	SS	-29.0%	TOTAL	696,937	18X	-30.0%

* - RTC IC is RTC INTERCITY. RTC SS is RTC SIERRA SPIRIT

RTC Route Comparison Chart OCTOBER 2015



"higher" and "lower" refer to higher or lower than the average of all routes (not the system average)

OCTOBER 2015

	ROUTE							
	RAPID	1	2	3	4	5	6	7
Total Ridership	115,374	57,117	66,034	23,623	17,732	38,918	16,614	43,626
Previous Year (OCT 2014)	114,831	58,232	66,112	23,056	19,264	41,918	17,167	51,295
Change	0.5%	-1.9%	-0.1%	2.5%	-8.0%	-7.2%	-3.2%	-15.0%
Average Daily Ridership	3,722	1,842	2,130	762	572	1,255	536	1,407
Days Route Operated	31	31	31	31	31	31	31	31
Revenue Veh. Hours	2,552.1	1,754.1	1,815.4	656.9	541.7	945.6	688.6	1,410.6
Previous Year (OCT 2014)	2,499.5	1,699.3	1,799.6	650.4	533.4	939.9	682.6	1,387.2
Change	2.1%	3.2%	0.9%	1.0%	1.6%	0.6%	0.9%	1.7%
Passengers / RVH	45.2	32.6	36.4	36.0	32.7	41.2	24.1	30.9
Previous Year (OCT 2014)	45.9	34.3	36.7	35.5	36.1	44.6	25.1	37.0
Change	-1.6%	-5.0%	-1.0%	1.4%	-9.4%	-7.7%	-4.1%	-16.4%
Revenue Vehicle Miles	22,893	13,294	19,087	9,124	7,052	12,418	6,322	26,580
Passengers / RVM	5.04	4.30	3.46	2.59	2.51	3.13	2.63	1.64
Previous Year (OCT 2014)	5.12	4.52	3.50	2.54	2.78	3.40	2.74	1.97
Change	-1.6%	-5.0%	-1.1%	1.8%	-9.4%	-7.9%	-4.1%	-16.6%
One-Way Trips	4,756	2,752	2,705	1,356	1,084	1,852	1,383	2,122
Deadhead Miles	1,467.7	649.3	1,322.6	1,028.6	440.9	629.6	417.0	752.7
Deadhead Hours	92.90	25.07	53.06	43.47	14.55	27.34	21.82	27.33
Est. Gross Operating Cost	\$275,857	\$189,607	\$196,233	\$71,005	\$58,553	\$102,211	\$74,426	\$152,472
Est. Cost Per RVH	\$108.09	\$108.09	\$108.09	\$108.09	\$108.09	\$108.09	\$108.09	\$108.09
Est. Cost Per RVM	\$12.05	\$14.26	\$10.28	\$7.78	\$8.30	\$8.23	\$11.77	\$5.74
Est. Cost Per Passenger	\$2.39	\$3.32	\$2.97	\$3.01	\$3.30	\$2.63	\$4.48	\$3.49

OCTOBER 2015

	ROUTE							
	9	11	12	13	14	15	16	17
Total Ridership	29,942	58,235	39,116	14,816	19,239	32,934	8,621	13,099
Previous Year (OCT 2014)	32,677	64,765	40,311	16,026	20,806	35,460	9,146	13,505
Change	-8.4%	-10.1%	-3.0%	-7.6%	-7.5%	-7.1%	-5.7%	-3.0%
Average Daily Ridership	966	1,879	1,262	478	621	1,062	278	423
Days Route Operated	31	31	31	31	31	31	31	31
Revenue Veh. Hours	1,176.3	1,504.1	1,255.0	539.9	953.3	865.2	348.6	699.6
Previous Year (OCT 2014)	1,167.4	1,491.2	1,246.4	530.8	952.1	862.0	342.2	684.6
Change	0.8%	0.9%	0.7%	1.7%	0.1%	0.4%	1.9%	2.2%
Passengers / RVH	25.5	38.7	31.2	27.4	20.2	38.1	24.7	18.7
Previous Year (OCT 2014)	28.0	43.4	32.3	30.2	21.9	41.1	26.7	19.7
Change	-9.1%	-10.9%	-3.6%	-9.1%	-7.6%	-7.5%	-7.5%	-5.1%
Revenue Vehicle Miles	11,540	11,874	13,638	4,479	9,270	9,838	3,195	13,447
Passengers / RVM	2.59	4.90	2.87	3.31	2.08	3.35	2.70	0.97
Previous Year (OCT 2014)	2.85	5.53	2.98	3.64	2.25	3.62	2.92	1.04
Change	-8.9%	-11.3%	-3.7%	-9.1%	-7.6%	-7.6%	-7.5%	-6.5%
One-Way Trips	1,896	3,846	1,884	1,094	1,949	1,648	1,072	1,060
Deadhead Miles	632.1	781.4	674.9	185.1	723.5	509.5	242.3	487.6
Deadhead Hours	22.94	32.24	24.50	9.67	33.30	25.86	8.68	17.46
Est. Gross Operating Cost	\$127,152	\$162,575	\$135,657	\$58,357	\$103,047	\$93,524	\$37,681	\$75,621
Est. Cost Per RVH	\$108.09	\$108.09	\$108.09	\$108.09	\$108.09	\$108.09	\$108.09	\$108.09
Est. Cost Per RVM	\$11.02	\$13.69	\$9.95	\$13.03	\$11.12	\$9.51	\$11.80	\$5.62
Est. Cost Per Passenger	\$4.25	\$2.79	\$3.47	\$3.94	\$5.36	\$2.84	\$4.37	\$5.77

OCTOBER 2015

	ROUTE					
	18	18X	19	21	25	26
Total Ridership	21,516	1,002	6,363	12,088	5,936	7,865
Previous Year (OCT 2014)	23,853	1,432	6,836	13,002	6,660	7,960
Change	-9.8%	-30.0%	-6.9%	-7.0%	-10.9%	-1.2%
Average Daily Ridership	694	46	289	390	220	254
Days Route Operated	31	22	22	31	27	31
Revenue Veh. Hours	709.3	79.2	260.7	612.1	209.6	403.0
Previous Year (OCT 2014)	715.4	82.8	272.6	604.9	212.2	392.9
Change	-0.9%	-4.3%	-4.3%	1.2%	-1.2%	2.6%
Passengers / RVH	30.3	12.7	24.4	19.7	28.3	19.5
Previous Year (OCT 2014)	33.3	17.3	25.1	21.5	31.4	20.3
Change	-9.0%	-26.8%	-2.7%	-8.1%	-9.8%	-3.7%
Revenue Vehicle Miles	8,073	979	2,582	7,446	2,804	4,746
Passengers / RVM	2.67	1.02	2.46	1.62	2.12	1.66
Previous Year (OCT 2014)	2.93	1.40	2.53	1.77	2.35	1.72
Change	-9.1%	-26.8%	-2.7%	-8.1%	-9.8%	-3.7%
One-Way Trips	1,452	176	528	1,892	662	1,203
Deadhead Miles	621.3	0.0	168.7	337.8	115.2	434.7
Deadhead Hours	28.35	0.00	7.70	13.93	4.76	14.86
Est. Gross Operating Cost	\$76,669	\$8,561	\$28,179	\$66,161	\$22,660	\$43,563
Est. Cost Per RVH	\$108.09	\$108.09	\$108.09	\$108.09	\$108.09	\$108.09
Est. Cost Per RVM	\$9.50	\$8.75	\$10.91	\$8.89	\$8.08	\$9.18
Est. Cost Per Passenger	\$3.56	\$8.54	\$4.43	\$5.47	\$3.82	\$5.54

OCTOBER 2015

	ROUTE				MISC
	54	56	RTC IC	SS	
Total Ridership	10,937	17,000	2,587	16,603	0
Previous Year (OCT 2014)	11,625	17,680	3,352	13,726	
Change	-5.9%	-3.8%	-22.8%	21.0%	
Average Daily Ridership	353	548	118	536	
Days Route Operated	31	31	22	31	
Revenue Veh. Hours	419.3	606.9	285.6	744.0	
Previous Year (OCT 2014)	410.4	601.9	298.6	744.0	
Change	2.2%	0.8%	-4.3%	0.0%	
Passengers / RVH	26.1	28.0	9.1	22.3	
Previous Year (OCT 2014)	28.3	29.4	11.2	18.4	
Change	-7.9%	-4.6%	-19.3%	21.0%	
Revenue Vehicle Miles	6,679	8,988	9,043	6,886	
Passengers / RVM	1.64	1.89	0.29	2.41	
Previous Year (OCT 2014)	1.78	1.98	0.35	1.99	
Change	-7.9%	-4.6%	-19.3%	21.0%	
One-Way Trips	846	1,238	264	2,976	
Deadhead Miles	251.2	479.6	843.7	470.3	
Deadhead Hours	9.60	16.92	38.50	24.80	
Est. Gross Operating Cost	\$45,319	\$65,604	\$30,875	\$80,420	
Est. Cost Per RVH	\$108.09	\$108.09	\$108.09	\$108.09	
Est. Cost Per RVM	\$6.79	\$7.30	\$3.41	\$11.68	
Est. Cost Per Passenger	\$4.14	\$3.86	\$11.93	\$4.84	

Oct 2015

	SYSTEM TOTALS		PERCENT CHANGE
	Oct 2015	Oct 2014	
Cash Fares			
Adult	97,094	97,567	-0.5%
Reduced	59,567	63,268	-5.8%
Total Cash Fares	156,661	160,835	-2.6%
Period Pass Fares			
Adult	178,832	190,625	-6.2%
Reduced	183,971	189,925	-3.1%
Total Period Pass Fares	362,803	380,550	-4.7%
Transfers	105,098	112,812	-6.8%
Flow Through	10,017	8,107	23.6%
Free Rides	15,444	17,966	-14.0%
RTC ACCESS ID Cash	3,480	3,192	9.0%
Stored Ride Pass	43,434	47,235	-8.0%
Adult Ridership	381,506	399,160	-4.4%
Reduced	315,431	331,537	-4.9%
Total Ridership	696,937	730,697	-4.6%
Previous Year	730,697		
Change	-4.6%		
Average Daily Ridership	22,482	23,571	-4.6%
Days Route Operated	31	31	0.0%
Revenue Veh. Hours	22,037	21,804	1.1%
Previous Year	21,804		
Change	1.1%		
Passengers / RVH	31.6	33.5	-5.6%
Previous Year	33.5		
Change	-5.6%		
Revenue Vehicle Miles	252,276	249,613	1.1%
Passengers / RVM	2.76	2.93	-5.6%
Previous Year	2.93		
Change	-5.6%		
One-Way Trips	43,696	43,234	1.1%
Deadhead Miles	14,667	14,646	0.1%
Deadhead Hours	639.6	638.5	0.2%
Est. Gross Operating Cost	\$2,381,992	\$2,261,176	5.3%
Est. Cost Per RVH	\$108.09	\$103.70	4.2%
Est. Cost Per RVM	\$9.44	\$9.06	4.2%
Est. Cost Per Passenger	\$3.42	\$3.09	10.4%

Nov 2015 - Oct 2016

	ROUTE							
	RAPID	1	2	3	4	5	6	7
Total Ridership	1,316,800	652,962	744,226	267,011	207,717	464,097	191,346	509,950
Previous 12 Months	1,354,626	671,935	742,628	266,388	215,078	470,830	193,874	540,873
Change	-2.8%	-2.8%	0.2%	0.2%	-3.4%	-1.4%	-1.3%	-5.7%
Average Daily Ridership	3,608	1,789	2,039	732	569	1,271	524	1,397
Days Route Operated	365	365	365	365	365	365	365	365
Revenue Veh. Hours	29,191	20,008	20,753	7,521	6,190	10,857	7,895	16,096
Previous 12 Months	29,175	20,008	20,739	7,514	6,187	10,843	7,886	16,092
Change	0.1%	0.0%	0.1%	0.1%	0.0%	0.1%	0.1%	0.0%
Passengers / RVH	45.1	32.6	35.9	35.5	33.6	42.7	24.2	31.7
Previous 12 Months	46.4	33.6	35.8	35.5	34.8	43.4	24.6	33.6
Change	-2.8%	-2.8%	0.2%	0.2%	-3.5%	-1.6%	-1.4%	-5.7%
Revenue Vehicle Miles	261,854	151,629	218,197	104,579	80,583	142,521	72,489	302,819
Passengers / RVM	5.03	4.31	3.41	2.55	2.58	3.26	2.64	1.68
Previous 12 Months	5.18	4.43	3.41	2.55	2.67	3.31	2.68	1.79
Change	-2.8%	-2.8%	0.2%	0.1%	-3.5%	-1.6%	-1.4%	-5.7%
One-Way Trips	54,400	31,390	30,966	15,530	12,387	21,256	15,858	24,175
Deadhead Miles	16,774	7,406	15,244	11,913	5,037	7,269	4,814	8,613
Deadhead Hours	1,061.8	285.9	612.1	503.2	166.3	315.5	251.9	312.7
Est. Gross Operating Cost	\$3,059,554	\$2,097,054	\$2,175,083	\$788,253	\$648,766	\$1,137,987	\$827,461	\$1,687,024
Est. Cost Per RVH	\$104.81	\$104.81	\$104.81	\$104.81	\$104.81	\$104.81	\$104.81	\$104.81
Est. Cost Per RVM	\$11.68	\$13.83	\$9.97	\$7.54	\$8.05	\$7.98	\$11.41	\$5.57
Est. Cost Per Passenger	\$2.32	\$3.21	\$2.92	\$2.95	\$3.12	\$2.45	\$4.32	\$3.31

Nov 2015 - Oct 2016

	ROUTE							
	9	11	12	13	14	15	16	17
Total Ridership	359,366	717,535	451,348	176,320	226,371	369,473	105,573	145,809
Previous 12 Months	362,746	742,816	420,885	189,101	233,687	365,086	110,469	144,661
Change	-0.9%	-3.4%	7.2%	-6.8%	-3.1%	1.2%	-4.4%	0.8%
Average Daily Ridership	985	1,966	1,237	483	620	1,012	289	399
Days Route Operated	365	365	365	365	365	365	365	365
Revenue Veh. Hours	13,491	17,193	14,416	6,149	10,953	9,937	3,990	8,000
Previous 12 Months	13,476	17,182	14,396	6,149	10,937	9,923	3,987	7,996
Change	0.1%	0.1%	0.1%	0.0%	0.1%	0.1%	0.1%	0.1%
Passengers / RVH	26.6	41.7	31.3	28.7	20.7	37.2	26.5	18.2
Previous 12 Months	26.9	43.2	29.2	30.8	21.4	36.8	27.7	18.1
Change	-1.0%	-3.5%	7.1%	-6.8%	-3.3%	1.1%	-4.5%	0.7%
Revenue Vehicle Miles	132,449	135,730	156,514	51,018	106,531	112,929	36,559	151,520
Passengers / RVM	2.71	5.29	2.88	3.46	2.12	3.27	2.89	0.96
Previous 12 Months	2.74	5.48	2.69	3.71	2.20	3.24	3.02	0.96
Change	-1.1%	-3.5%	7.1%	-6.8%	-3.3%	1.1%	-4.5%	0.7%
One-Way Trips	21,761	43,964	21,621	12,461	22,397	18,912	12,268	12,121
Deadhead Miles	7,264	8,828	7,767	2,119	8,383	5,872	2,765	5,560
Deadhead Hours	263.7	364.4	281.9	110.6	385.7	298.4	99.0	199.1
Est. Gross Operating Cost	\$1,413,979	\$1,802,003	\$1,510,961	\$644,472	\$1,147,984	\$1,041,530	\$418,152	\$838,533
Est. Cost Per RVH	\$104.81	\$104.81	\$104.81	\$104.81	\$104.81	\$104.81	\$104.81	\$104.81
Est. Cost Per RVM	\$10.68	\$13.28	\$9.65	\$12.63	\$10.78	\$9.22	\$11.44	\$5.53
Est. Cost Per Passenger	\$3.93	\$2.51	\$3.35	\$3.66	\$5.07	\$2.82	\$3.96	\$5.75

Nov 2015 - Oct 2016

	ROUTE						RTC SH
	18	18X	19	21	25	26	
Total Ridership	256,809	15,582	70,547	142,789	69,808	92,702	
Previous 12 Months	275,707	15,242	72,245	151,616	75,299	94,883	1,583
Change	-6.9%	2.2%	-2.4%	-5.8%	-7.3%	-2.3%	
Average Daily Ridership	704	61	276	391	227	254	
Days Route Operated	365	256	256	365	307	365	
Revenue Veh. Hours	8,153	922	3,034	6,993	2,398	4,600	
Previous 12 Months	8,140	918	3,022	6,990	2,396	4,599	221
Change	0.2%	0.4%	0.4%	0.1%	0.1%	0.0%	
Passengers / RVH	31.5	16.9	23.3	20.4	29.1	20.2	
Previous 12 Months	33.9	16.6	23.9	21.7	31.4	20.6	7.2
Change	-7.0%	1.8%	-2.7%	-5.9%	-7.4%	-2.3%	
Revenue Vehicle Miles	92,808	11,387	30,044	85,093	32,076	54,158	
Passengers / RVM	2.77	1.37	2.35	1.68	2.18	1.71	
Previous 12 Months	2.98	1.34	2.41	1.78	2.35	1.75	0.29
Change	-7.0%	1.8%	-2.7%	-5.9%	-7.4%	-2.3%	
One-Way Trips	16,692	2,048	6,144	21,622	7,574	13,727	
Deadhead Miles	7,171	0	1,964	3,813	1,303	4,953	
Deadhead Hours	327.2	0.0	89.6	157.3	53.9	168.2	
Est. Gross Operating Cost	\$854,582	\$96,601	\$317,977	\$732,982	\$251,376	\$482,094	
Est. Cost Per RVH	\$104.81	\$104.82	\$104.82	\$104.81	\$104.81	\$104.81	
Est. Cost Per RVM	\$9.21	\$8.48	\$10.58	\$8.61	\$7.84	\$8.90	
Est. Cost Per Passenger	\$3.33	\$6.20	\$4.51	\$5.13	\$3.60	\$5.20	

Nov 2015 - Oct 2016

	ROUTE				MISC Service
	54	56	RTC IC	SS	
Total Ridership	130,735	197,461	35,736	150,994	3,060
Previous 12 Months	132,503	199,218	36,541	138,273	3,856
Change	-1.3%	-0.9%	-2.2%	9.2%	-20.6%
Average Daily Ridership	358	541	140	414	
Days Route Operated	365	365	256	365	
Revenue Veh. Hours	4,791	6,954	3,324	8,760	
Previous 12 Months	4,789	6,947	3,311	8,784	
Change	0.0%	0.1%	0.4%	-0.3%	
Passengers / RVH	27.3	28.4	10.8	17.2	
Previous 12 Months	27.7	28.7	11.0	15.7	
Change	-1.4%	-1.0%	-2.6%	9.5%	
Revenue Vehicle Miles	76,329	102,990	105,228	81,083	
Passengers / RVM	1.71	1.92	0.34	1.86	
Previous 12 Months	1.74	1.94	0.35	1.84	
Change	-1.4%	-1.0%	-3.0%	1.1%	
One-Way Trips	9,668	14,186	3,072	35,040	
Deadhead Miles	2,865	5,534	9,818	5,537	
Deadhead Hours	109.5	195.4	448.0	292.0	
Est. Gross Operating Cost	\$502,192	\$728,879	\$348,389	\$918,138	
Est. Cost Per RVH	\$104.81	\$104.81	\$104.82	\$104.81	
Est. Cost Per RVM	\$6.58	\$7.08	\$3.31	\$11.32	
Est. Cost Per Passenger	\$3.84	\$3.69	\$9.75	\$6.08	

Nov 2014 - Oct 2015

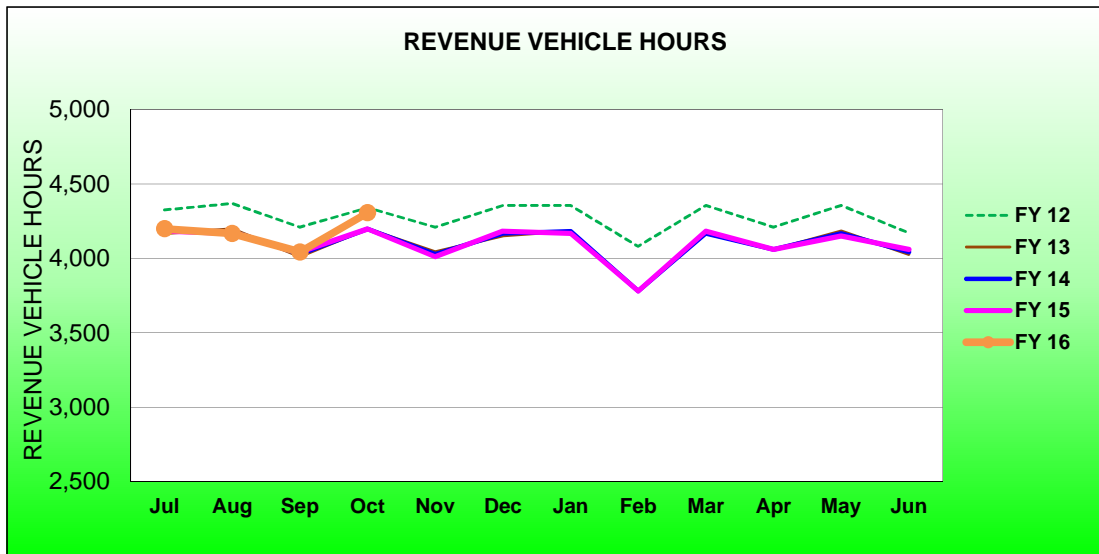
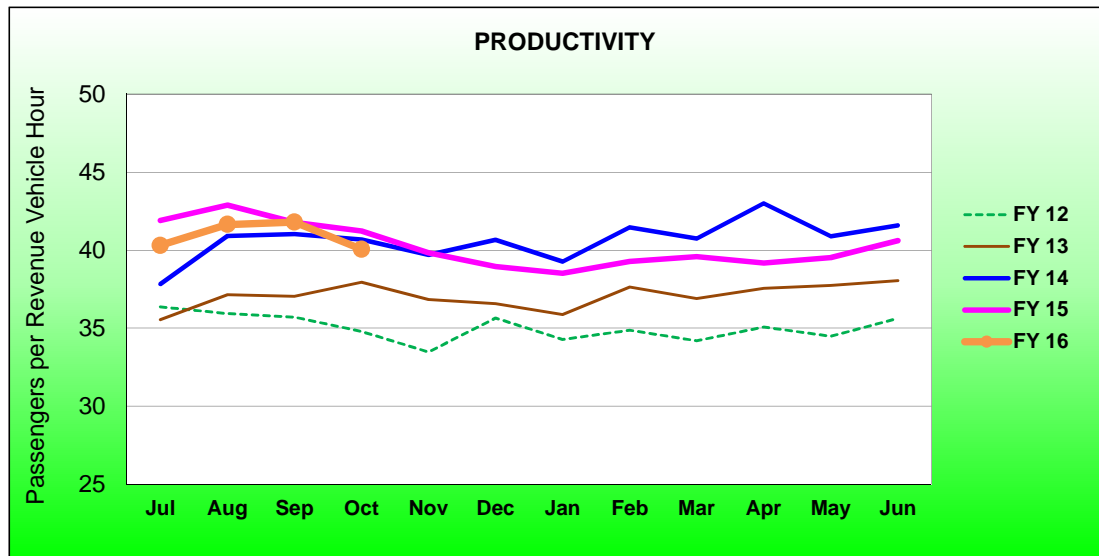
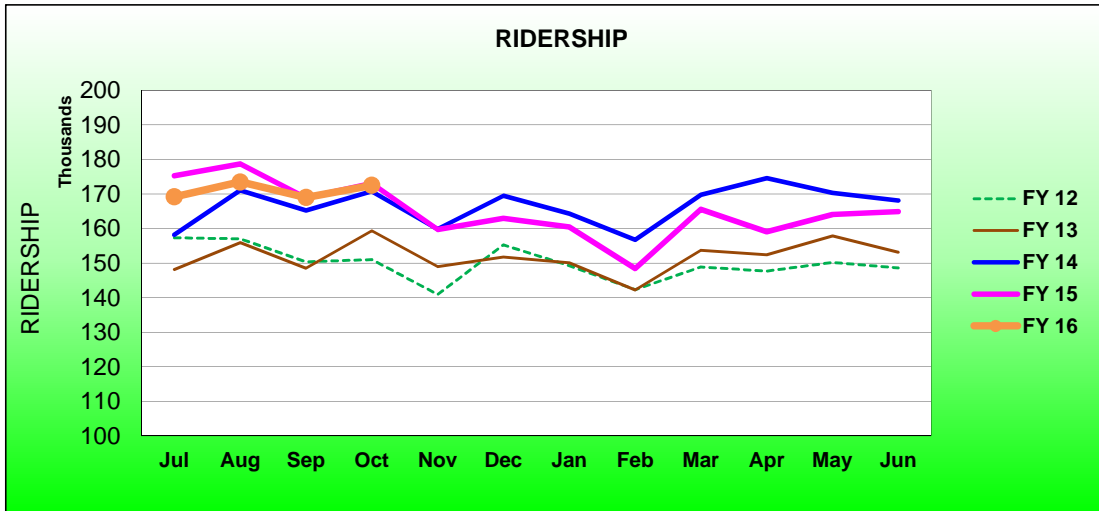
	Current 12 Months	Previous 12 Month	PERCENT CHANGE
Cash Fares			
Adult	1,075,284	1,089,966	-1.3%
Reduced	682,731	704,863	-3.1%
Total Cash Fares	1,758,015	1,794,829	-2.1%
Period Pass Fares			
Adult	2,001,314	2,135,385	-6.3%
Reduced	2,143,858	2,084,182	2.9%
Total Period Pass Fares	4,145,172	4,219,567	-1.8%
Transfers	1,226,626	1,292,380	-5.1%
Flow Through	95,825	92,465	3.6%
Free Rides	254,984	267,823	-4.8%
RTC ACCESS ID Cash	37,098	34,111	8.8%
Stored Ride Pass	520,647	545,787	-4.6%
Adult Ridership	4,383,080	4,511,400	-2.8%
Reduced	3,736,356	3,674,957	1.7%
Total Ridership	8,038,367	8,246,962	-2.5%
Previous 12 Months	8,246,962		
Change	-2.5%		
Average Daily Ridership	264,771	261,476	1.3%
Days Route Operated	365	365	0.0%
Revenue Veh. Hours	252,801	252,698	0.0%
Previous 12 Months	252,698		
Change	0.0%		
Passengers / RVH	31.8	32.6	-2.6%
Previous 12 Months	32.6		
Change	-2.6%		
Revenue Vehicle Miles	2,891,781	2,887,572	0.1%
Passengers / RVM	2.78	2.86	-2.7%
Previous 12 Months	2.86		
Change	-2.7%		
One-Way Trips	501,702	494,259	1.5%
Deadhead Miles	168,608	168,848	-0.1%
Deadhead Hours	7,354	7,356	0.0%
Est. Gross Operating Cost	\$26,497,617	\$26,347,293	0.6%
Est. Cost Per RVH	\$104.82	\$104.26	0.5%
Est. Cost Per RVM	\$9.16	\$9.12	0.4%
Est. Cost Per Passenger	\$3.30	\$3.19	3.2%

RTC Transit Operating Statistics

RTC RAPID and CONNECT/Route 1						
ROLLING 12 MONTH COMPARISON						
Most Recent 12 Months			Percent Change	Previous 12 Months		
Month	Year	Ridership		Month	Year	Ridership
Nov	2014	159,715	-0.1%	Nov	2013	159,822
Dec		162,927	-3.8%	Dec		169,448
Jan	2015	160,493	-2.3%	Jan	2014	164,260
Feb		148,429	-5.3%	Feb		156,714
Mar		165,544	-2.5%	Mar		169,725
Apr		159,028	-8.9%	Apr		174,542
May		164,046	-3.7%	May		170,362
Jun		164,867	-1.9%	Jun		168,082
Jul		169,186	-3.5%	Jul		175,259
Aug		173,483	-2.9%	Aug		178,669
Sep		168,981	0.1%	Sep		168,865
Oct		172,491	-0.3%	Oct		173,063
TOTAL		1,969,190	-2.9%	TOTAL		2,028,811

Oct 11, 2009 RTC RAPID and RTC CONNECT introduced
 Aug 11, 2013 RTC CONNECT becomes Route 1

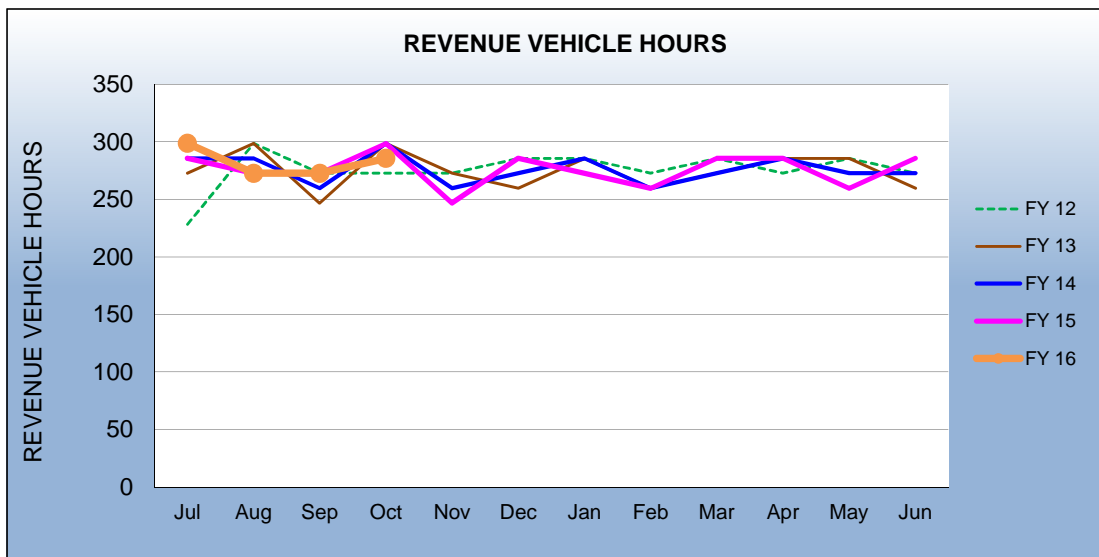
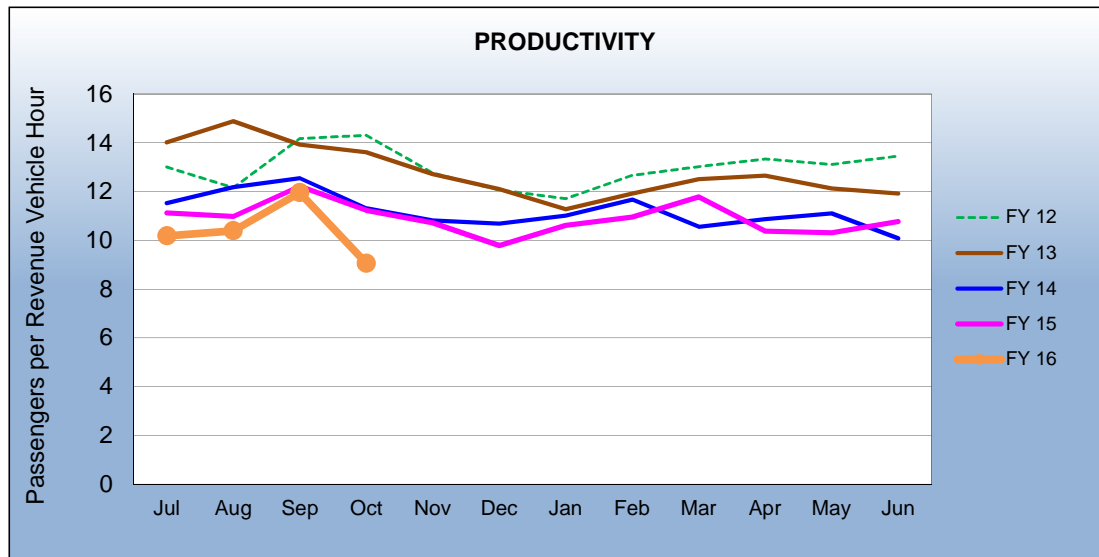
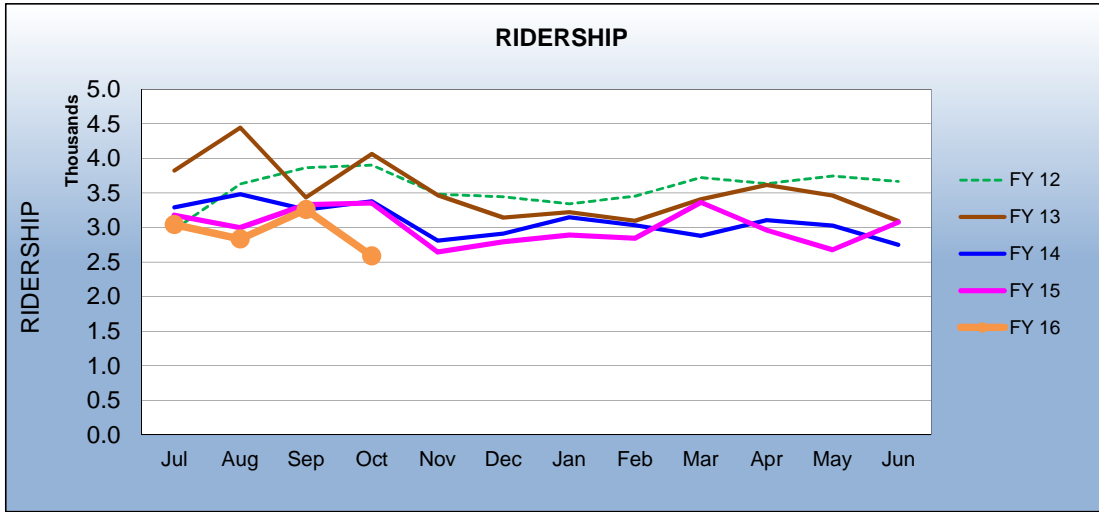
RTC RAPID and CONNECT/ROUTE 1 FISCAL YEAR COMPARISONS



RTC Transit Operating Statistics

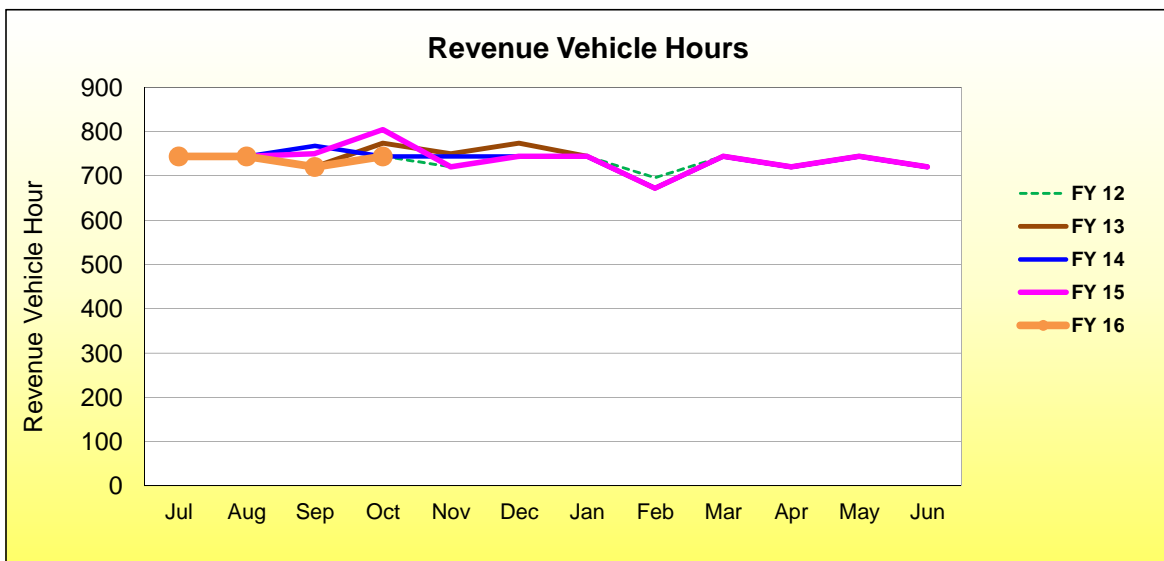
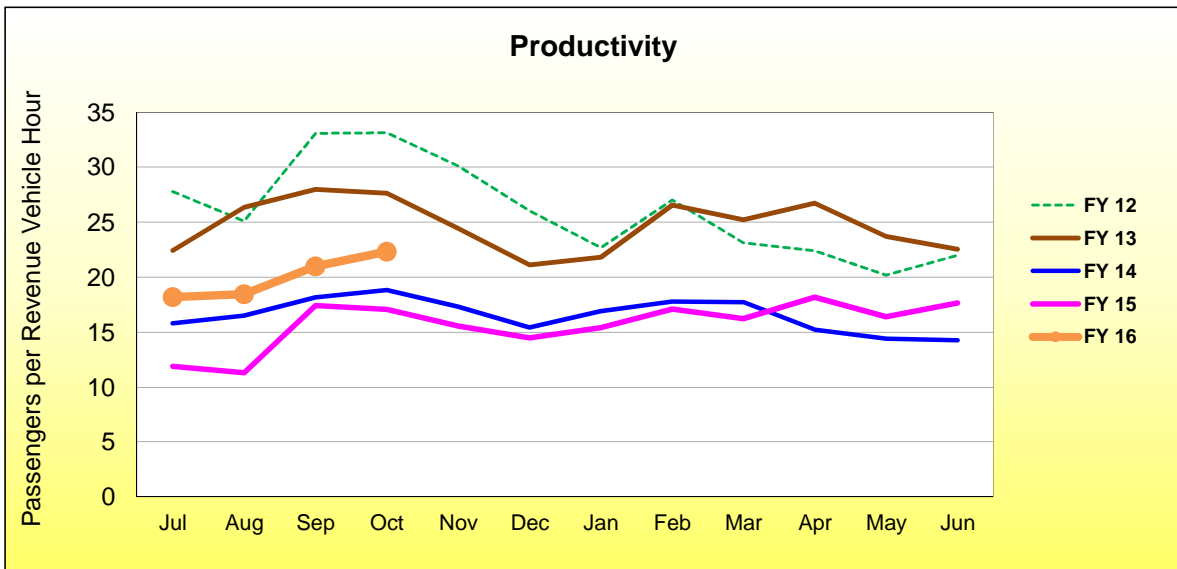
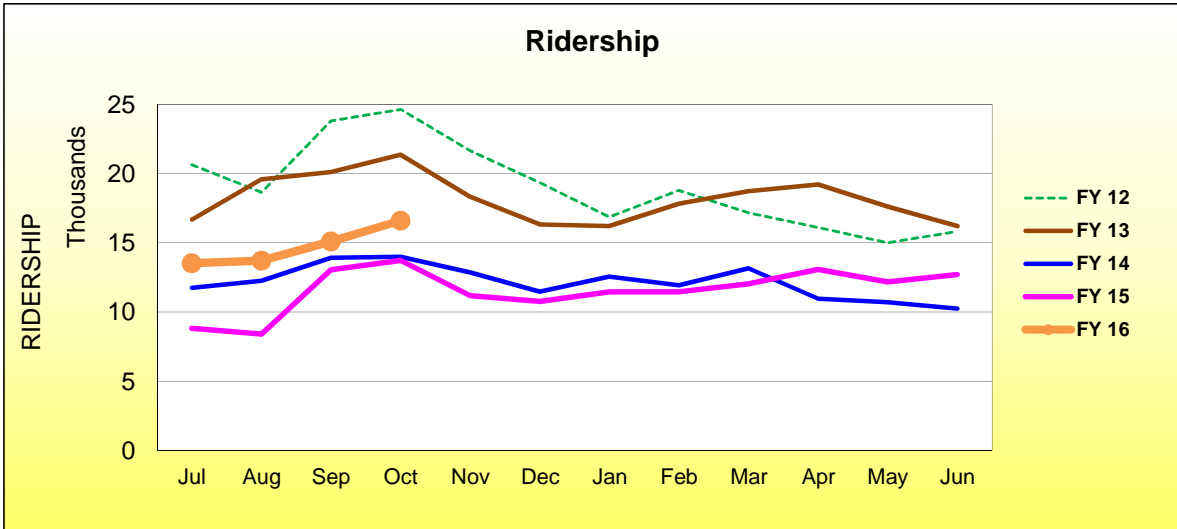
RTC INTERCITY						
ROLLING 12 MONTH COMPARISON						
Most Recent 12 Months			Percent Change	Previous 12 Months		
Month	Year	Ridership		Month	Year	Ridership
Nov	2014	2,644	-5.9%	Nov	2013	2,809
Dec		2,794	-4.1%	Dec		2,912
Jan	2015	2,893	-8.0%	Jan	2014	3,146
Feb		2,843	-6.2%	Feb		3,030
Mar		3,365	16.9%	Mar		2,879
Apr		2,962	-4.6%	Apr		3,106
May		2,676	-11.7%	May		3,029
Jun		3,076	11.9%	Jun		2,748
Jul		3,041	-4.3%	Jul		3,177
Aug		2,832	-5.4%	Aug		2,995
Sep		3,258	-2.2%	Sep		3,331
Oct		2,587	-22.8%	Oct		3,352
TOTAL		34,971	-4.2%	TOTAL		36,514

RTC INTERCITY FISCAL YEAR COMPARISONS



SIERRA SPIRIT						
ROLLING 12 MONTH COMPARISON						
Most Recent 12 Months			Percent Change	Previous 12 Months		
Month	Year	Ridership		Month	Year	Ridership
Nov	2014	11,186	-13.1%	Nov	2013	12,871
Dec		10,773	-6.1%	Dec		11,473
Jan	2015	11,457	-8.9%	Jan	2014	12,574
Feb		11,477	-3.9%	Feb		11,942
Mar		12,055	-8.5%	Mar		13,173
Apr		13,077	19.3%	Apr		10,961
May		12,192	13.9%	May		10,705
Jun		12,706	23.9%	Jun		10,257
Jul		13,527	53.0%	Jul		8,840
Aug		13,716	63.1%	Aug		8,411
Sep		15,102	15.6%	Sep		13,061
Oct		16,603	21.0%	Oct		13,726
TOTAL		153,871	11.5%	TOTAL		137,994

SIERRA SPIRIT FISCAL YEAR COMPARISONS



7/1/2013 25-cent adult and 10-cent reduced fare introduced

RTC TRANSIT RIDERSHIP REPORT
University of Nevada, Reno Wolf Pass Program
FY 2016

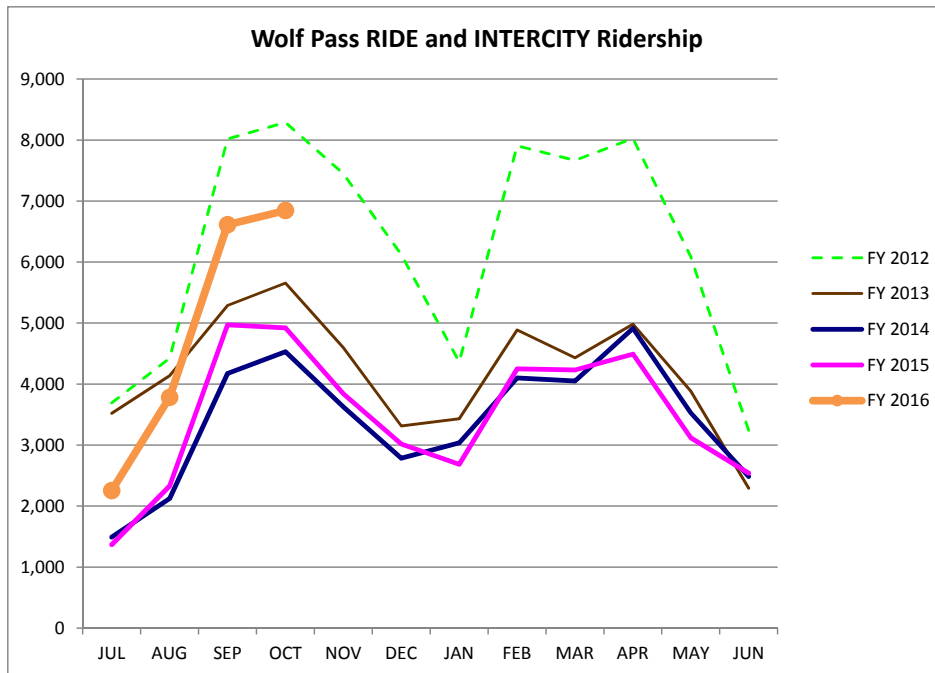
CATEGORY	JUL	AUG	SEP	OCT	NOV	DEC	JAN	FEB	MAR	APR	MAY	JUN	FYTD
RTC RIDE	2,199	3,718	6,453	6,723									19,093
RTC INTERCITY	57	66	162	123									408
RTC RIDE + INTERCITY	2,256	3,784	6,615	6,846									19,501
Percent Change	65%	62%	33%	39%									43%
Last Year (FY 2015)	1,368	2,331	4,973	4,922									13,594

HISTORIC RIDERSHIP

RTC RIDE AND RTC INTERCITY WOLF PASS

FY 2015	1,368	2,331	4,973	4,922	3,843	3,019	2,686	4,252	4,232	4,492	3,120	2,540	41,778
FY 2014	1,491	2,124	4,176	4,531	3,626	2,786	3,036	4,101	4,052	4,914	3,530	2,487	40,854
FY 2013	3,522	4,138	5,291	5,658	4,597	3,314	3,433	4,888	4,433	4,984	3,886	2,294	50,438
FY 2012	3,693	4,423	8,020	8,291	7,448	6,124	4,364	7,906	7,668	8,028	6,090	3,245	75,300
FY 2011	5,252	6,113	8,137	8,265	7,498	5,535	4,637	6,881	7,373	7,434	4,936	3,864	75,925
FY 2010	3,631	3,822	8,449	8,794	7,655	5,610	5,757	7,509	8,050	8,443	5,903	5,895	79,518
FY 2009	4,184	5,099	9,905	10,739	8,220	6,867	6,925	8,729	8,806	9,072	6,291	3,548	88,385
FY 2008	0	4,817	9,062	10,220	8,891	6,722	6,684	9,515	9,165	9,887	8,030	3,468	86,461
FY 2007	0	5,136	9,663	10,229	9,104	7,448	7,547	9,284	9,601	9,607	7,676	0	85,295
FY 2006	0	4,961	9,873	10,392	9,767	7,974	7,257	9,423	9,823	9,713	8,887	0	88,070
FY 2005	0	3,970	7,693	7,902	7,205	5,824	5,805	7,846	8,475	8,200	6,765	0	69,685
FY 2004	0	1,809	6,161	7,058	6,447	4,943	4,584	6,096	6,495	6,591	4,930	0	55,114
FY 2003	0	533	4,033	5,776	5,911	5,112	4,777	6,221	6,868	6,588	5,409	0	51,228

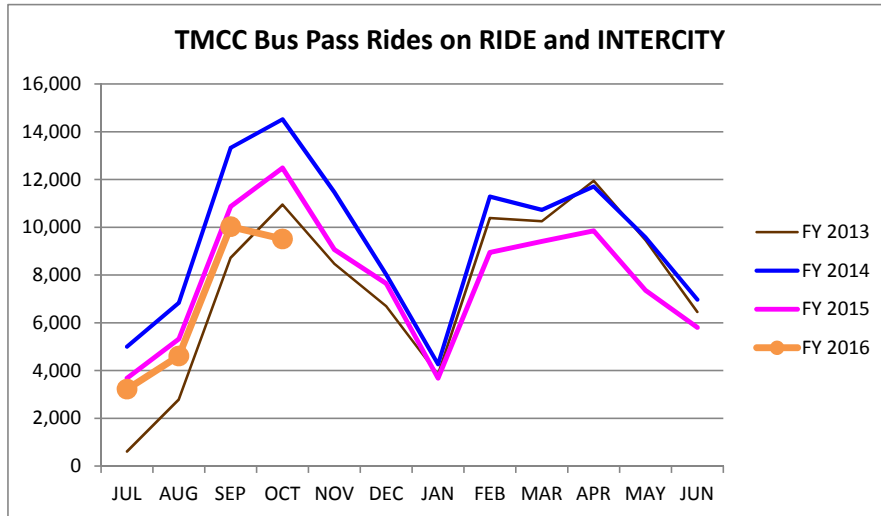
Aug 2007 data is estimated based on Sep ridership



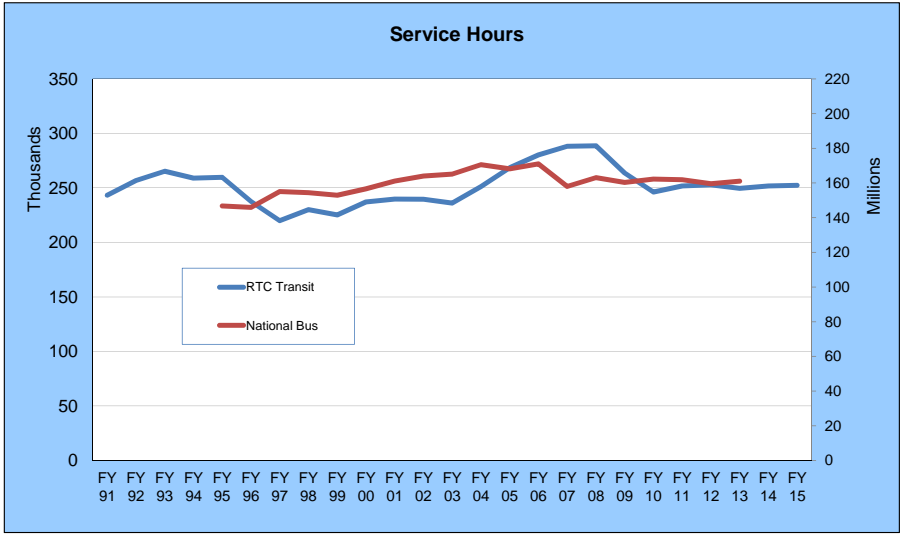
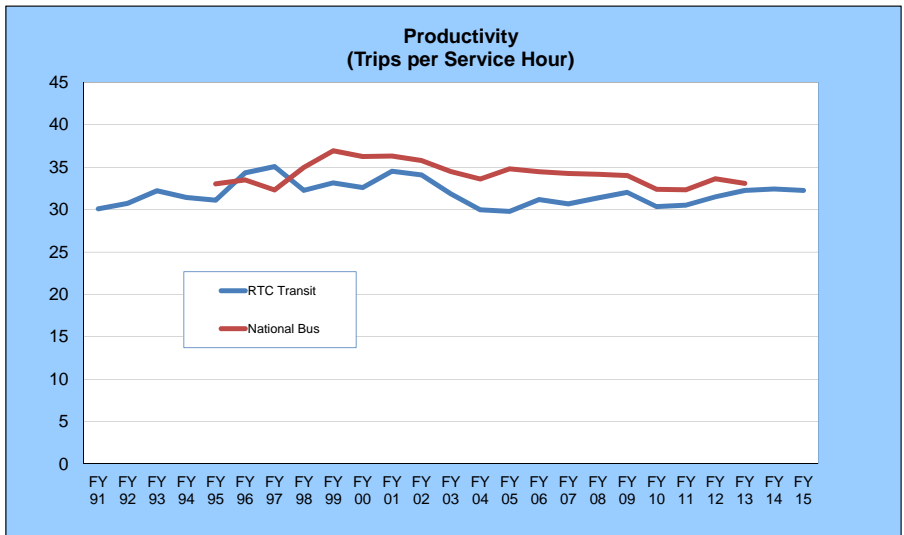
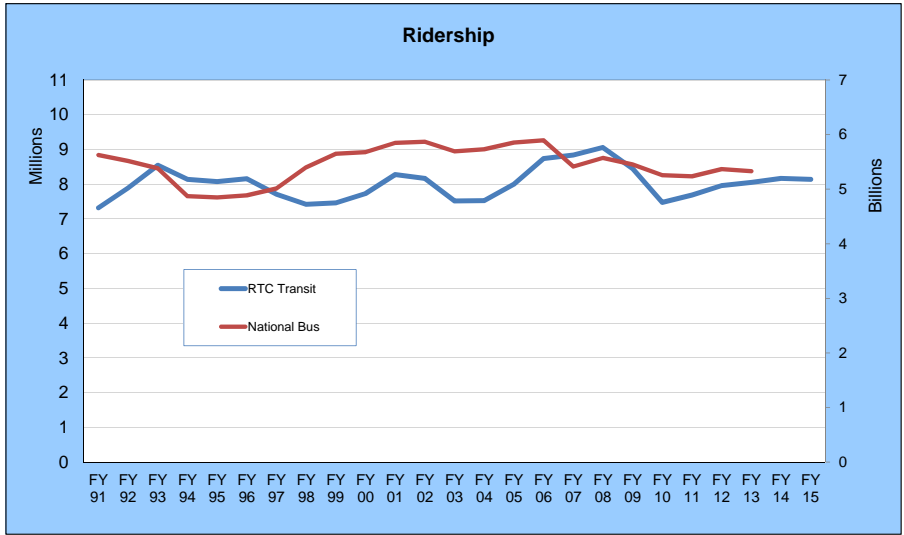
	RIDE	INTER CITY	RIDE and INTERCITY
FY 2015	39,949	1,829	41,778
FY 2014	38,471	2,383	40,854
FY 2013	46,928	3,510	50,438
FY 2012	71,438	3,862	75,300
FY 2011	72,048	3,877	75,925
FY 2010	75,283	4,235	79,518
FY 2009	82,712	5,673	88,385
FY 2008	83,966	2,495	86,461
FY 2007	82,752	2,543	85,295
FY 2006	88,070		88,070
FY 2005	69,685		69,685
FY 2004	55,114		55,114
FY 2003	51,228		51,228

RTC TRANSIT RIDERSHIP REPORT
Truckee Meadows Community College Lizard Pass Program
FY 2016

Fiscal Year	CATEGORY	JUL	AUG	SEP	OCT	NOV	DEC	JAN	FEB	MAR	APR	MAY	JUN	FYTD
FY 2016	RTC RIDE	3,210	4,599	10,005	9,496									27,310
	RTC INTERCITY	10	11	17	13									51
	Total	3,220	4,610	10,022	9,509									27,361
Perc. Change		-12%	-13%	-8%	-24%									-15%
FY 2015	Total	3,678	5,321	10,868	12,481									32,348
Historic Ridership														
RTC RIDE + INTERCITY	FY 2015	3,678	5,321	10,868	12,481	9,067	7,647	3,683	8,948	9,407	9,852	7,356	5,804	94,112
	FY 2014	5,003	6,837	13,330	14,523	11,462	8,019	4,265	11,287	10,725	11,706	9,574	6,969	113,700
	FY 2013	611	2,791	8,723	10,948	8,471	6,694	3,837	10,389	10,254	11,950	9,458	6,457	90,583
RTC RIDE	FY 2015	3,678	5,319	10,861	12,463	9,042	7,621	3,679	8,936	9,401	9,839	7,343	5,783	93,965
	FY 2014	4,995	6,825	13,319	14,507	11,453	8,014	4,251	11,276	10,715	11,682	9,565	6,963	113,565
	FY 2013	611	2,790	8,709	10,929	8,458	6,682	3,835	10,389	10,254	11,945	9,458	6,455	90,515
RTC INTERCITY	FY 2015	0	2	7	18	25	26	4	12	6	13	13	21	147
	FY 2014	8	12	11	16	9	5	14	11	10	24	9	6	135
	FY 2013	0	1	14	19	13	12	2	0	0	5	0	2	68

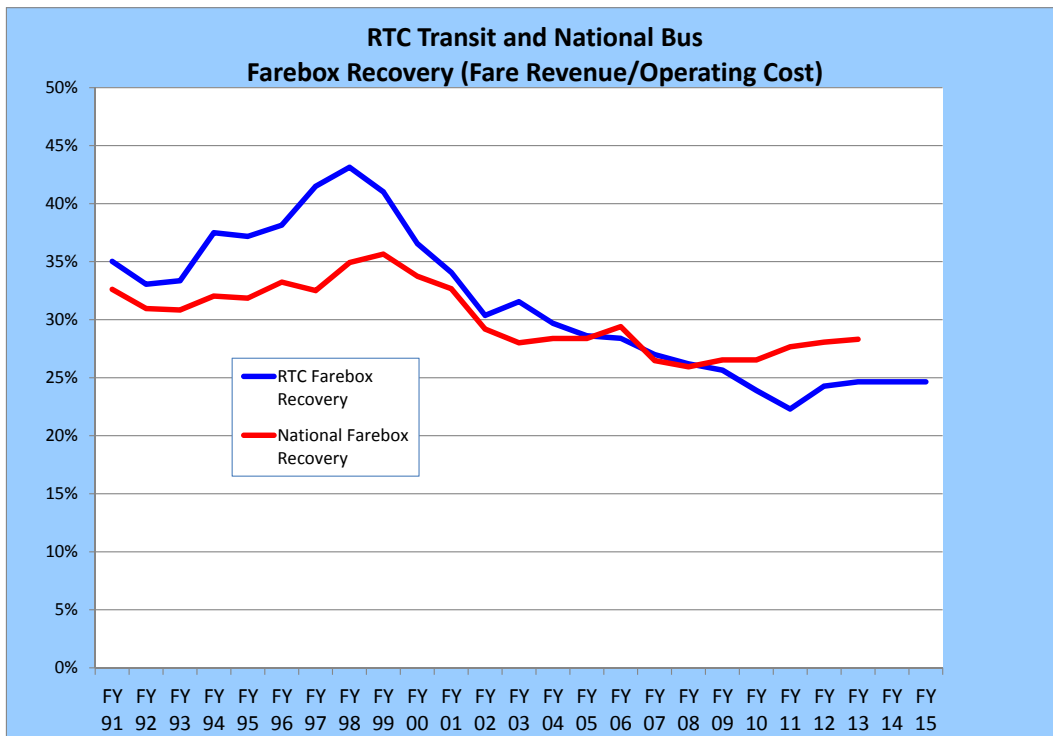
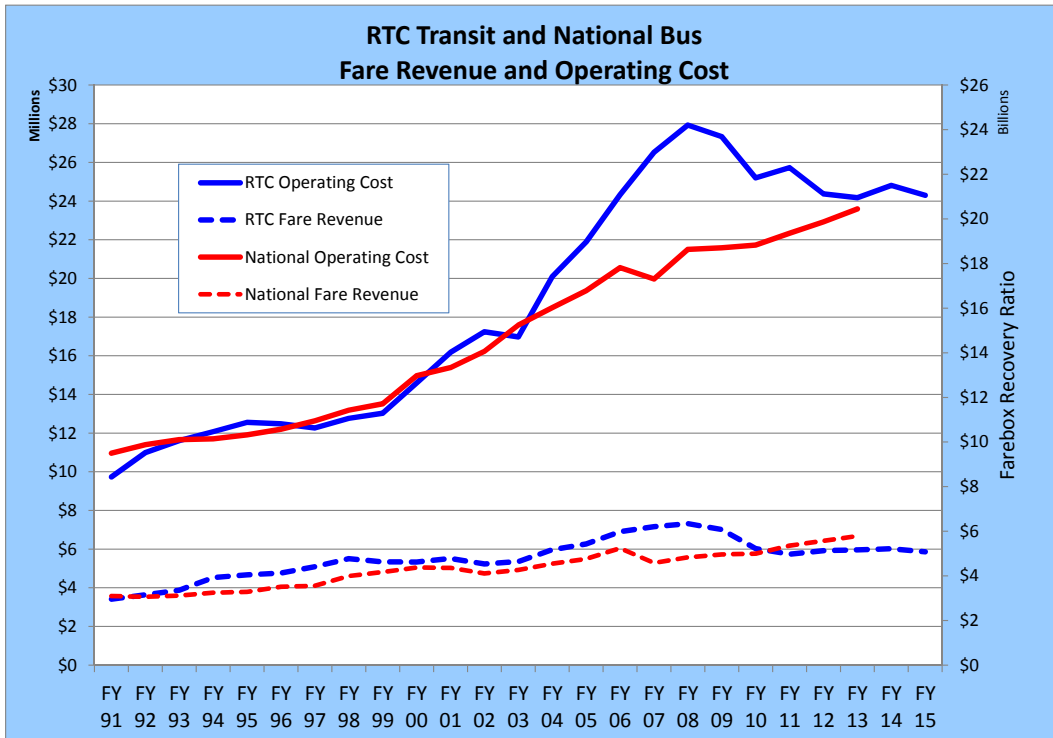


RTC Transit and National Bus Comparison



National bus data is based on APTA data

RTC Transit and National Bus Comparison



National bus data is based on APTA data

RTC Transit Ridership by Fare Category

	Adult	Reduced	Cash	Pass
FY 96	5,561,385	2,302,742	3,796,142	2,560,267
FY 97	5,160,106	2,271,790	3,464,511	2,529,988
FY 98	4,771,790	2,380,017	3,115,490	2,584,627
FY 99	4,716,813	2,480,895	3,065,373	2,653,028
FY 00	4,788,053	2,648,375	2,965,141	3,072,292
FY 01	5,108,696	2,908,807	2,988,850	3,488,200
FY 02	5,005,458	2,910,928	2,803,403	3,616,613
FY 03	4,594,536	2,629,981	2,603,683	3,169,422
FY 04	4,580,359	2,626,544	2,539,373	3,088,648
FY 05	4,870,916	2,694,693	2,582,039	2,790,914
FY 06	5,148,290	2,983,738	2,498,794	3,161,312
FY 07	4,991,833	3,226,773	2,283,889	3,503,177
FY 08	4,907,995	3,410,862	2,159,096	3,795,752
FY 09	4,416,321	3,353,032	1,876,468	3,843,590
FY 10	3,904,492	3,063,695	1,647,009	3,614,940
FY 11	4,047,258	3,150,680	1,689,314	3,730,268
FY 12	4,163,468	3,355,216	1,768,579	3,759,342
FY 13	4,438,622	3,612,328	1,784,653	3,800,928
FY 14	4,496,292	3,669,043	1,809,777	4,120,412
FY 15	4,403,004	3,737,904	1,770,525	4,202,882

