



REGIONAL TRANSPORTATION COMMISSION
Public Transportation • Streets and Highways • Planning



RTC TRANSIT OPERATING STATISTICS

**RTC RIDE
RTC RAPID
RTC INTERCITY
SIERRA SPIRIT**

February 2016

RTC TRANSIT OPERATING STATISTICS REPORT

TABLE OF CONTENTS

RTC Transit Highlights	Page ii
RTC Transit Summary.....	Page iv
System Reports.....	Page 1
Revenue and Cost.....	Page 4
Economic Data	Page 5
Route Comparison Data.....	Page 8
Monthly Operating Statistics.....	Page 10
RTC RAPID.....	Page 20
RTC INTERCITY	Page 22
SIERRA SPIRIT	Page 24
University Pass Program.....	Page 26
National Comparisons	Page 28
Historic Ridership by Fare Category.....	Page 30

RTC TRANSIT HIGHLIGHTS

February 2016

RTC Transit

- There were 607,490 rides in February, **3.0% lower** than last February.
- Weighted average daily ridership at 20,857 was **6.7% lower** than last February. (There was one more weekday this month compared with last year.)
- Service hours (revenue vehicle hours) were **up 4.0%** this month compared with last year
- Productivity this month at 30.0 passengers per service hour was **6.7% lower** than last year.
- There were 7.89 million rides over the most recent twelve months. This is **4.2% lower** than the previous twelve months
- Over the most recent twelve months, operating cost was \$23.9 million and fare revenue was \$5.8 million. Net operating cost was \$18.1 million **down 3.7%** compared with the previous 12-month period. Operating cost was **down 3.2%** and revenue was **down 1.5%** compared to the previous 12-month period.
- The farebox recovery ratio (revenue divided by cost) was 24.3%, up 0.4 percentage points compared with last year.

External Impacts on Ridership

Climate impact was more favorable this February compared with last February. While average temperature at 43.8°F was 2.4°F colder than last year, there were seven days of rain this month compared with two last year. There was one day of snow this month and one last year.

The price of gas in Reno at \$2.23 was **24% lower** than last year and **40% lower** than two years ago. High gas prices tend to encourage car drivers to use transit, and low gas prices have the reverse effect. While we experienced a ridership increase from the economic rebound, continued employment also may provide people with sufficient income to buy and drive a car. According to Experian, loans for new and used vehicles hit an all-time high of \$968 billion in the third quarter of calendar year 2015. Another possible impact on transit is the proliferation of ridesharing companies. Uber restarted service to Reno in September 2015 and Lyft started shortly after in October 2015. While most transit riders cannot afford ridesharing, there are certainly many people who fall between transit and taxis. From talking with rideshare drivers, many of the initial users were tourists and college students.

As a result of the Great Recession, the number of unemployed people in Reno-Sparks more than tripled from 9.5K in September 2007 to almost 31K in January 2011. The unemployment rate hit an all-time high of 14.0% in January 2011. However, employment has rebounded. Preliminary data shows 14.2K unemployed people in January 2015. The unemployment rate was 6.2%. Nevada's unemployment rate for

February was 5.9%, **the lowest rate since April 2008**. The national unemployment rate was 4.9%, **tied for the lowest rate since February 2008**.

While these numbers have rebounded to before the Great Recession, this does not necessarily mean everyone who lost a job has gained a job or even an equivalent job or at an equivalent wage. It should be noted that the unemployment figures do not include people who have given up and not sought employment in the last four weeks as well as part-time and temporary workers. The labor force participation rate for February was 62.9% down from an all-time high of 67.3% in 2000. The labor force participation rate had been steadily increasing from the 60's throughout the 80's as a result of more women entering the work force as well as people living longer and retiring later, however, it has been declining since the Great Recession likely the result of younger people not being able to find jobs and Baby Boomers reaching retirement age.

The makeup of local employment is also changing. Casino hotel jobs in Reno-Sparks have fallen to 14.0K in February. In 1996 casino hotel jobs made up 16% of total employment. It now makes up less than 7.0%. On the other hand, food and drink place employment was around 8.5K in 1996 and is now at 15.0K.



RTC TRANSIT SUMMARY

RTC Transit Fare Categories

- In February, adult ridership was **up 1.7%** compared with last year (page 14). Adult ridership made up 55.8% of total ridership. By comparison, in February 1996, adult ridership made up 71% of total ridership.
- In February, reduced fare ridership was **down 8.3%** compared with last year. Reduced fare ridership made up 44.2% of total ridership. (Page 30 shows the steady annual growth of reduced fare ridership since FY 1996.) **There were 88K more reduced fare rides in February than 20 years ago, a 49% increase.** In FY 2015, the RTC carried 1.5 million more reduced fare rides than FY 1997.
- This month, cash ridership was **down 0.7%** compared with last year. Pass ridership **fell 3.0%**. Pass ridership now makes up 63.0% of all ridership. Cash only makes up 34.9% of total ridership.
- Page 30 shows the steady decline of cash ridership. What is interesting is that cash ridership was on the decline before the Great Recession and may be indicative of the steady decline of tourism/gaming in the area. Also, since 2004, cash fares have also been raised much more than pass fares.

RTC Route Ridership

- Route 5 (serving Sutro St and Sun Valley) has the highest productivity in the system with 40.8 rides per service hour followed by Route 15 (serving Sutro St and TMCC) with 37.7. Route 5 productivity now surpasses RTC RAPID.
- Route 16 (serving W 2nd St and Idlewild Park) ridership **increased the most at 13%** over the previous year. Route 54 (connecting Sparks and Meadowood Mall) **increased the second most at 12%**. Route 18X (serving Sparks Industrial) **fell the most by 25%** followed by Route 7 (serving N Virginia St and Stead) which **fell by 11%**.



RTC RAPID

- There were 92,825 rides on RAPID this month **down 7.2%** compared with last year. At 39.8 rides per service hour, RAPID is the second in productivity only to Route 5. There were 143,360 rides on RAPID and Route 1 combined **down 3.4%** compared with last year (page 20).

RTC INTERCITY

- There were 2,033 rides this month, **down 28%** compared with last February (page 22). **This is also the lowest monthly ridership for the month of February ever.** At 7.5 rides per service hour, productivity is **down 32%** compared with last year. For the most recent 12 months, there were 31,827 rides, **down 11%** compared with the previous 12 months. Low gas prices are especially harmful to commuter bus services.

SIERRA SPIRIT

- There were 10,087 rides this month, **down 12%** compared with last February (page 24). Productivity at 14.4 rides per service hour is **19% lower** than last year. There were 152,756 rides over the most recent 12 months, **up 14%** compared with the previous 12 months.

University of Nevada, Reno Wolf Pass Program

- There were 4,415 Wolf Pass rides on RTC RIDE and RTC INTERCITY this month, **3.8% higher** than last February (page 26). UNR running out of parking spaces is likely the reason for the surge in Wolf Pass ridership.

Truckee Meadows Community College Pass Program

- There were 8,620 rides this month on RIDE and INTERCITY. This is **down 3.7%** compared with last February.

National Comparison

- Pages 28 and 29 compare annual RTC performance data with all bus agencies in the nation. Our productivity has remained below the national average since FY 1998. The financial information has not been published by APTA for FY 2014 and FY 2015. Our operating cost increased faster than the nation from FY 2003 to FY 2008 but has been declining since. Our farebox recovery ratio had exceeded the national average until FY 2006. (Keep in mind the limitations of comparing the RTC to the nation. One difference is how our economy suffered more from the Great Recession than the rest of the country, although our economy grew faster than the rest of the nation before that point. Other transit agencies may have also acquired light rail and taken rides away from bus transit. National bus includes BRT and commuter bus service.)



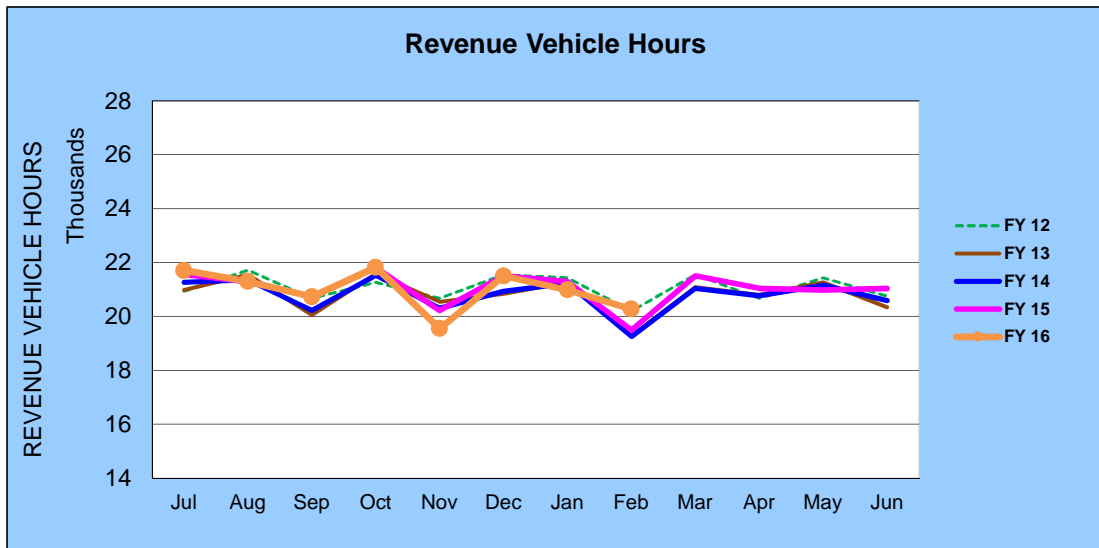
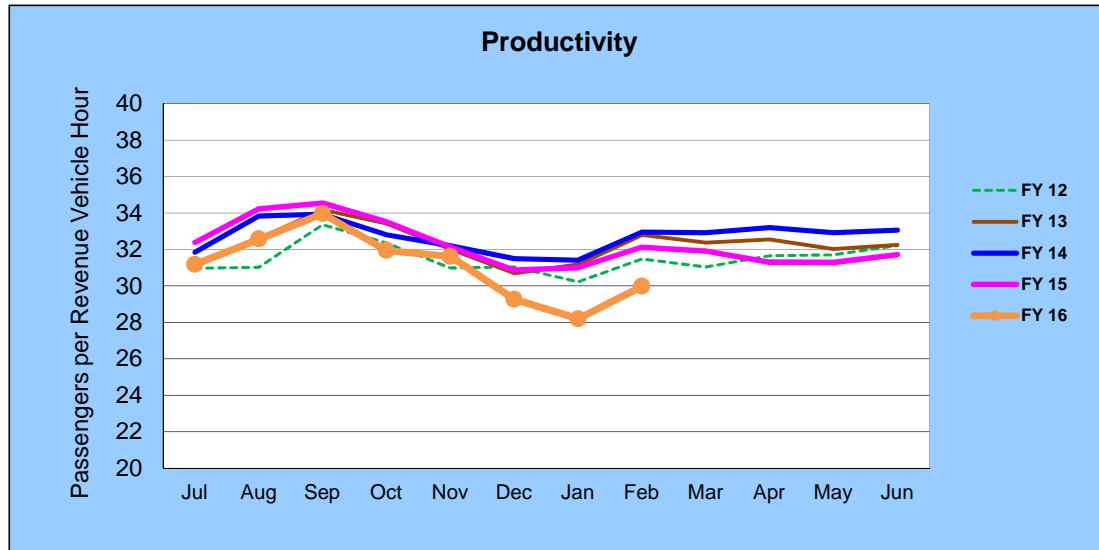
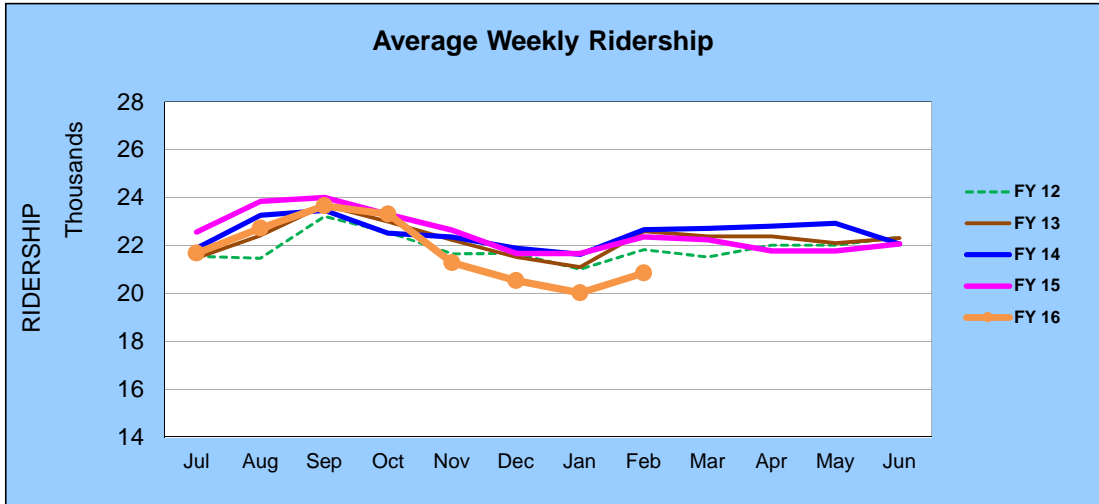
RTC Transit Operating Statistics

RTC Transit						
ROLLING 12 MONTH RIDERSHIP COMPARISON						
Most Recent 12 Months			Percent Change	Previous 12 Months		
Month	Year	Ridership		Month	Year	Ridership
Mar	2015	686,118	-0.9%	Mar	2014	692,568
Apr		658,441	-4.5%	Apr		689,582
May		656,530	-5.8%	May		696,631
Jun		667,123	-2.0%	Jun		680,533
Jul		676,591	-3.1%	Jul		698,063
Aug		693,420	-4.9%	Aug		728,886
Sep		703,989	-1.7%	Sep		715,832
Oct		696,937	-4.6%	Oct		730,697
Nov		617,791	-4.9%	Nov		649,337
Dec		629,071	-5.2%	Dec		663,553
Jan	2016	591,581	-10.4%	Jan	2015	660,211
Feb		607,490	-3.0%	Feb		626,117
TOTAL		7,885,082	-4.2%	TOTAL		8,232,010

RTC Transit includes RTC RIDE, RTC RAPID, RTC INTERCITY, & RTC SIERRA SPIRIT

RTC Transit

FISCAL YEAR COMPARISONS

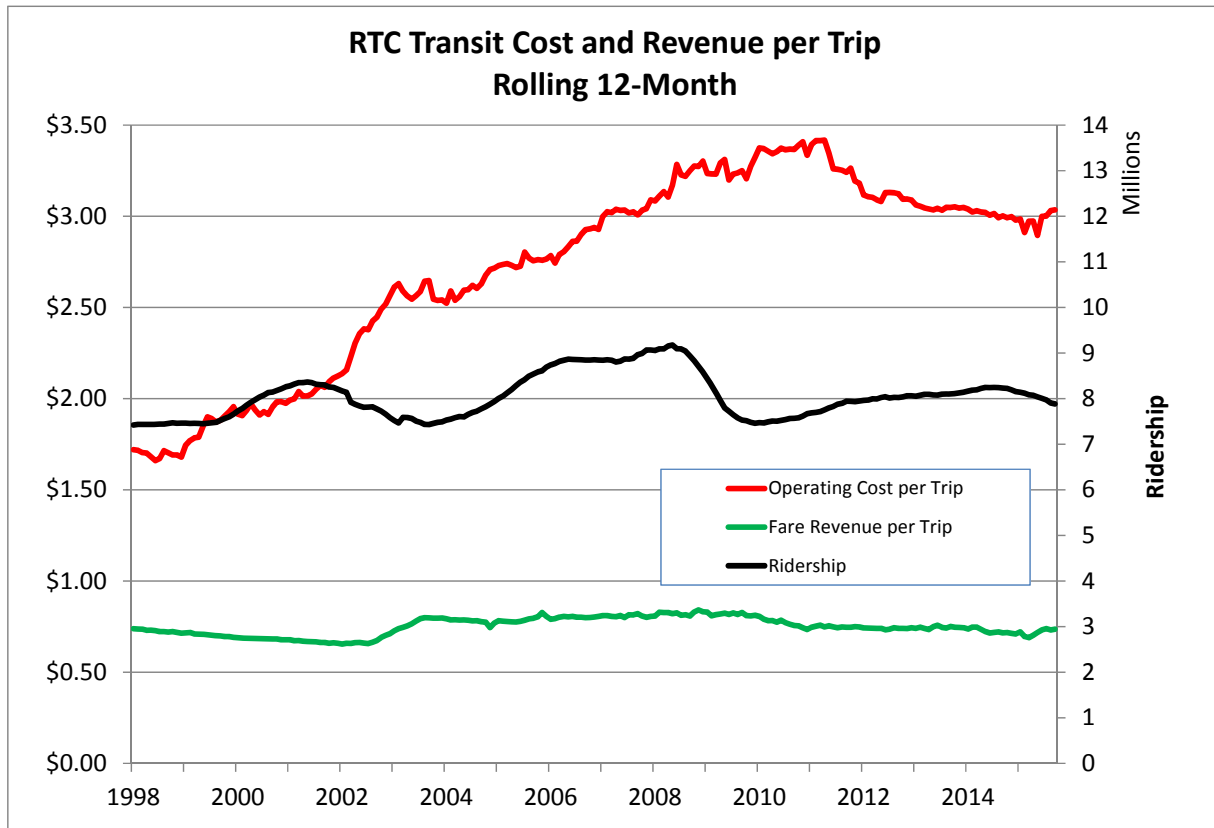
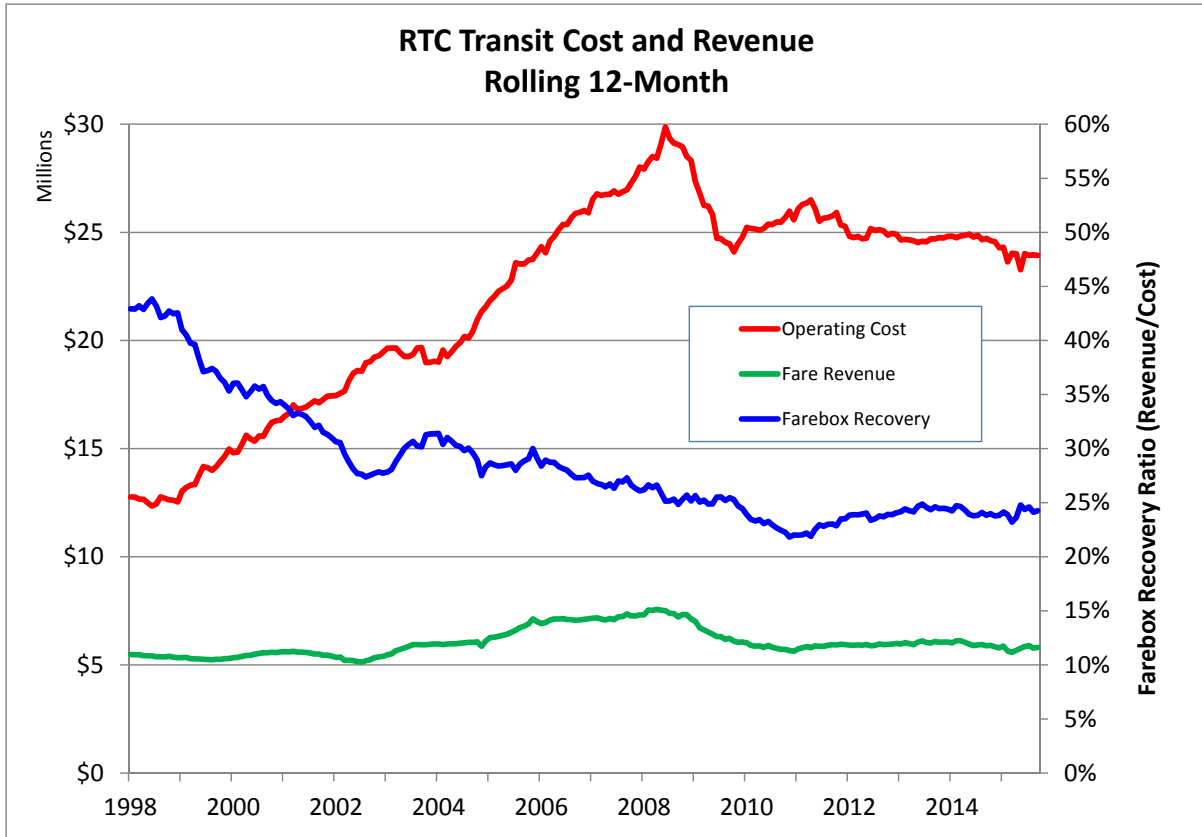


RTC Transit

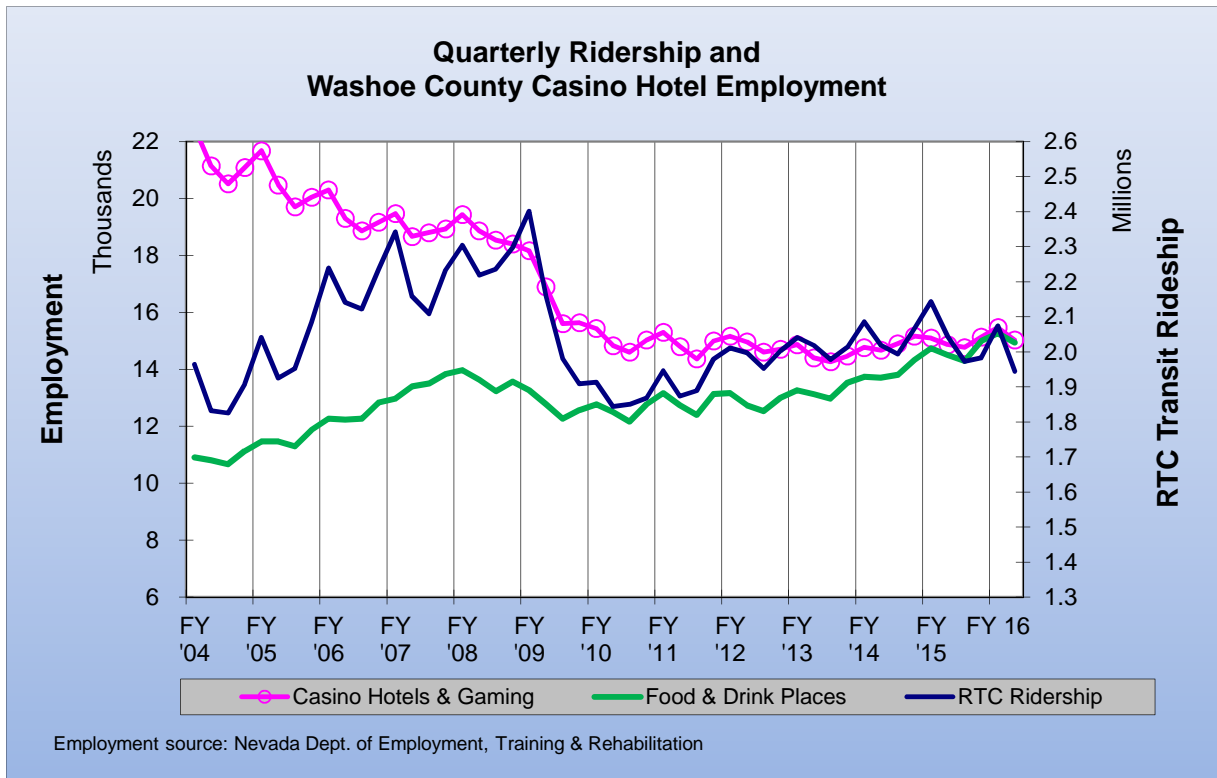
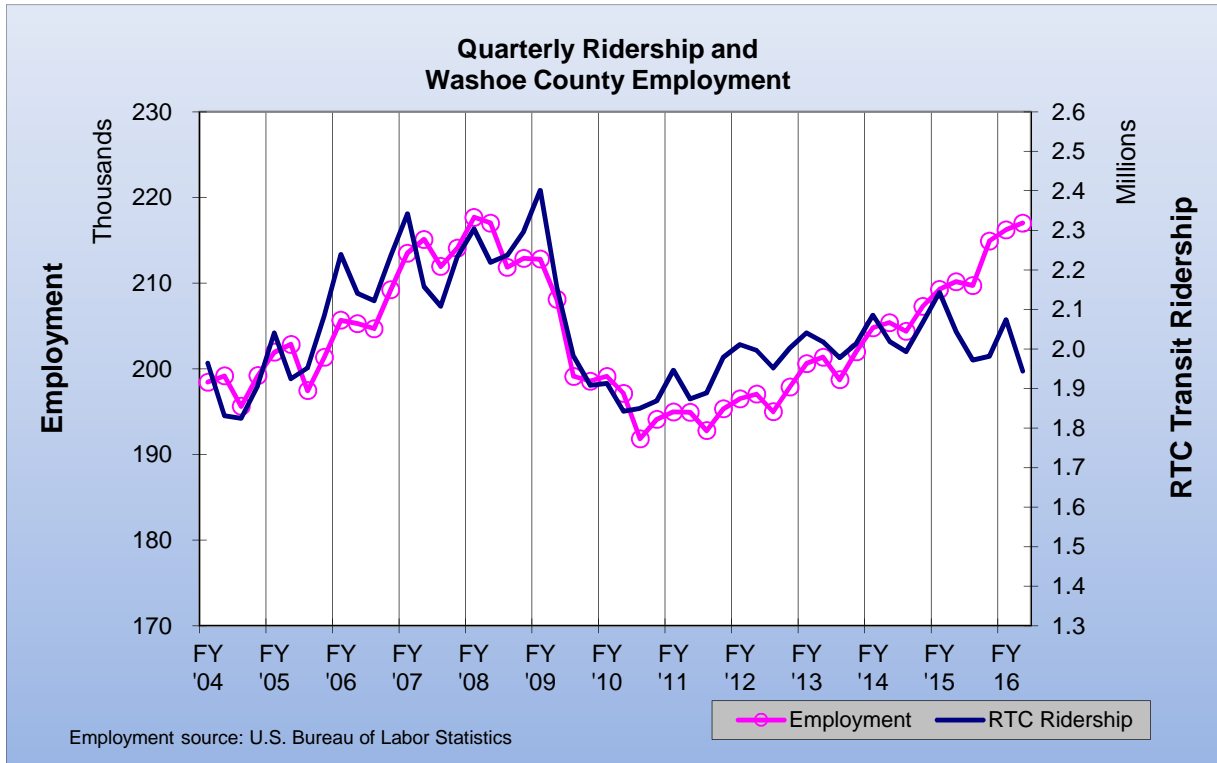
WEIGHTED AVERAGE DAILY RIDERSHIP							
Month	FY 16	Perc. Change From:			FY 15	FY 14	FY 13
		FY 15	FY 14	FY 13			
Jul	21,676	-3.9%	-0.9%	0.9%	22,558	21,876	21,480
Aug	22,719	-4.7%	-2.3%	1.3%	23,851	23,261	22,418
Sep	23,655	-1.4%	0.8%	-0.2%	24,001	23,465	23,691
Oct	23,308	0.1%	3.5%	1.4%	23,293	22,514	22,994
Nov	21,284	-6.0%	-4.8%	-4.3%	22,648	22,352	22,235
Dec	20,536	-5.2%	-6.2%	-4.6%	21,673	21,886	21,515
Jan	19,753	-8.8%	-8.7%	-6.4%	21,667	21,627	21,100
Feb	20,857	-6.7%	-7.9%	-7.7%	22,361	22,655	22,589
Mar					22,245	22,708	22,377
Apr					21,769	22,800	22,378
May					21,776	22,921	22,101
Jun					22,067	22,890	22,306

Weighted Avg. Daily Ridership = (avg. weekday X 5) + avg. Saturday + avg. Sunday) / 7
 Holidays are excluded from the weighted average.

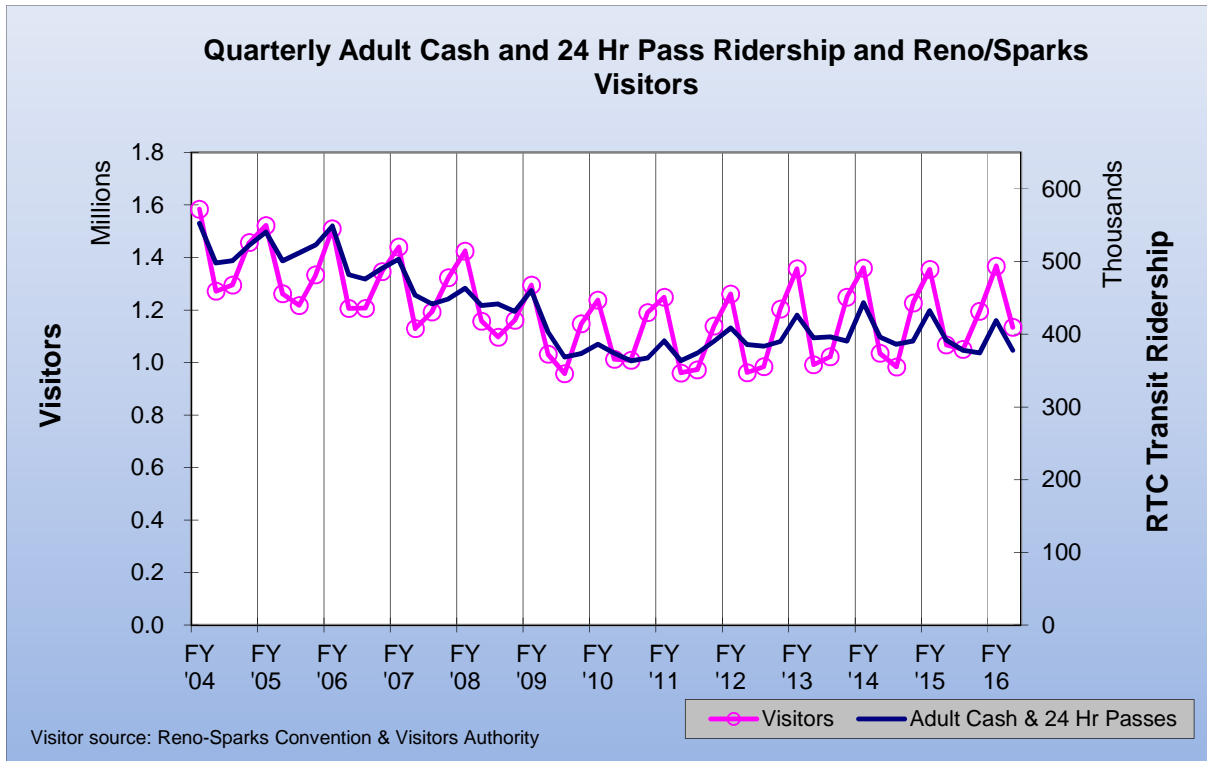
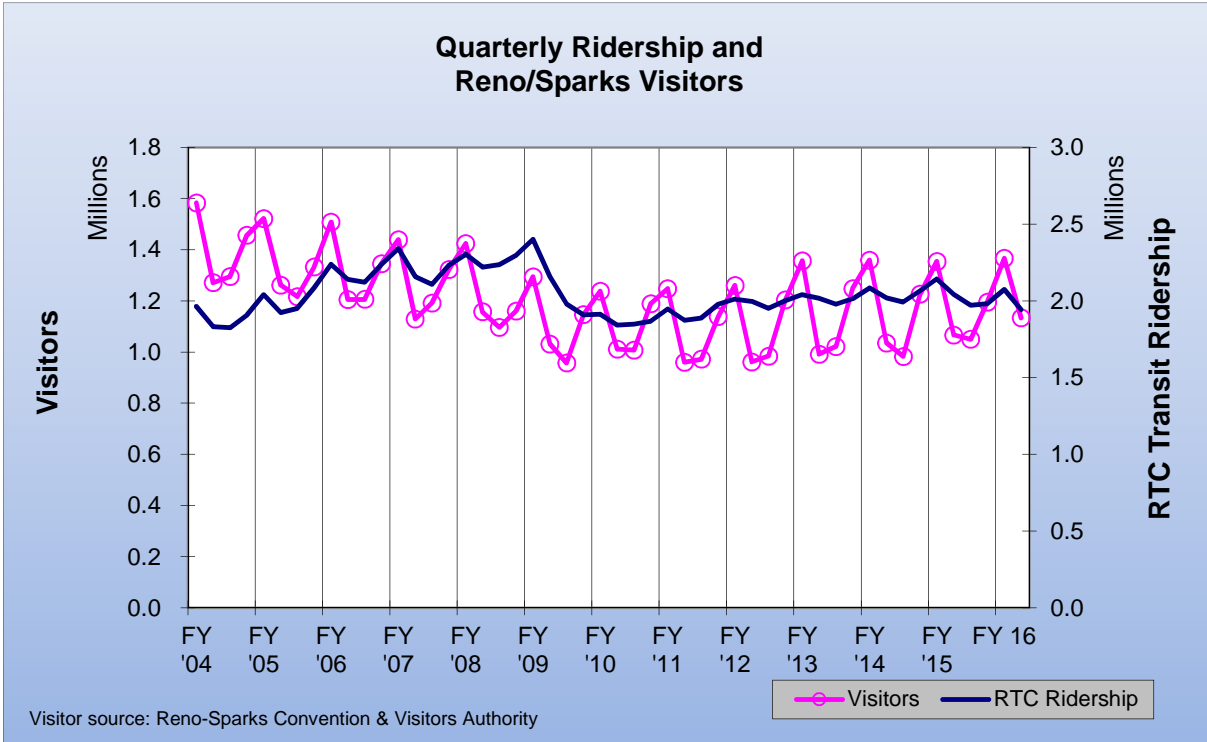
WEEKDAY, SATURDAY, AND SUNDAY RIDERSHIP ROLLING TWELVE MONTH COMPARISON									
Month	Weekday			Saturday			Sunday		
	Recent 12 Mos.	Percent Change	Previous 12 Mos.	Recent 12 Mos.	Percent Change	Previous 12 Mos.	Recent 12 Mos.	Percent Change	Previous 12 Mos.
Mar	24,980	-2.2%	25,553	17,504	-1.5%	17,775	13,307	-0.8%	13,416
Apr	24,452	-4.5%	25,591	17,205	-5.2%	18,144	12,918	-4.3%	13,500
May	24,281	-5.5%	25,684	17,566	-3.6%	18,218	13,462	-2.5%	13,811
Jun	24,623	-3.9%	25,632	17,680	-2.2%	18,080	13,673	-2.3%	13,990
Jul	24,129	-4.6%	25,289	17,456	-1.6%	17,743	13,626	-0.7%	13,719
Aug	25,433	-3.9%	26,477	18,232	-7.4%	19,679	13,635	-8.5%	14,895
Sep	26,410	-2.3%	27,044	19,040	1.2%	18,808	14,491	3.6%	13,985
Oct	26,456	1.1%	26,168	17,851	-2.2%	18,251	13,028	-6.7%	13,960
Nov	23,881	-7.1%	25,696	16,938	0.7%	16,824	12,643	-4.5%	13,235
Dec	23,089	-4.7%	24,240	16,390	-4.5%	17,156	11,916	-10.8%	13,356
Jan	22,341	-8.1%	24,323	15,027	-11.0%	16,888	11,539	-12.4%	13,166
Feb	23,484	-7.4%	25,360	16,477	-2.0%	16,810	12,104	-6.3%	12,921



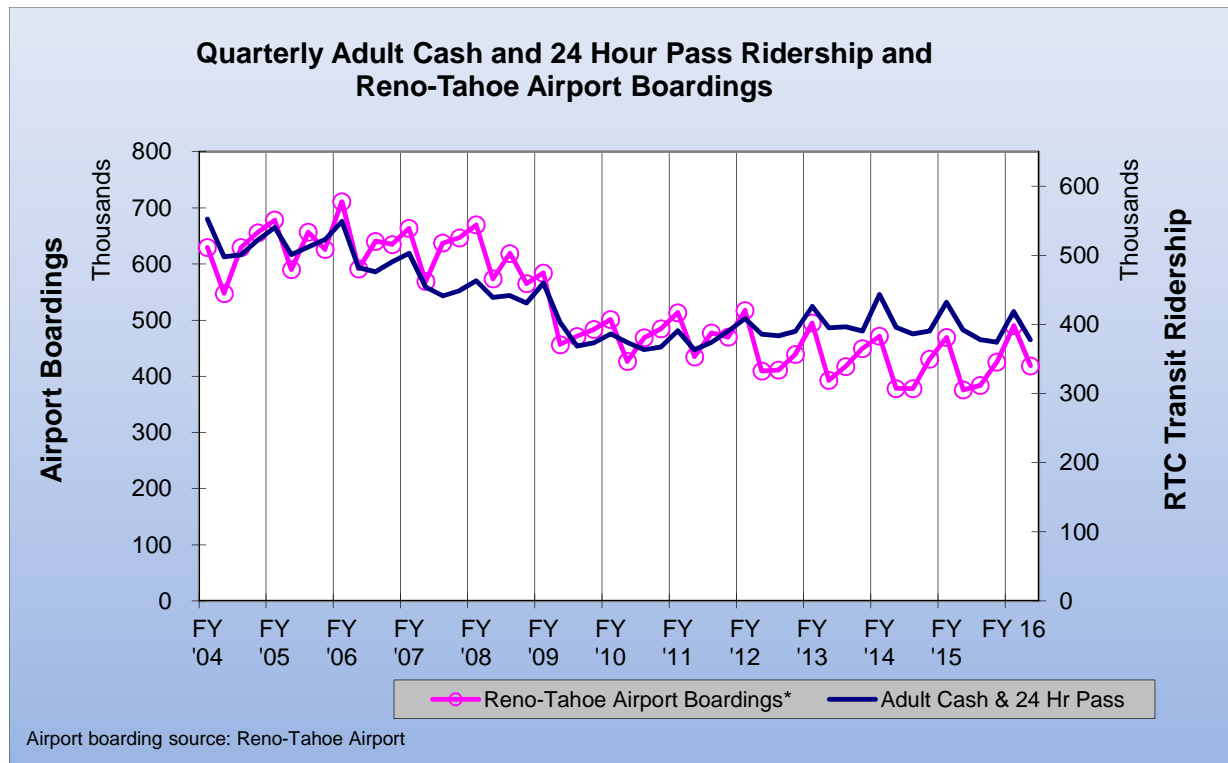
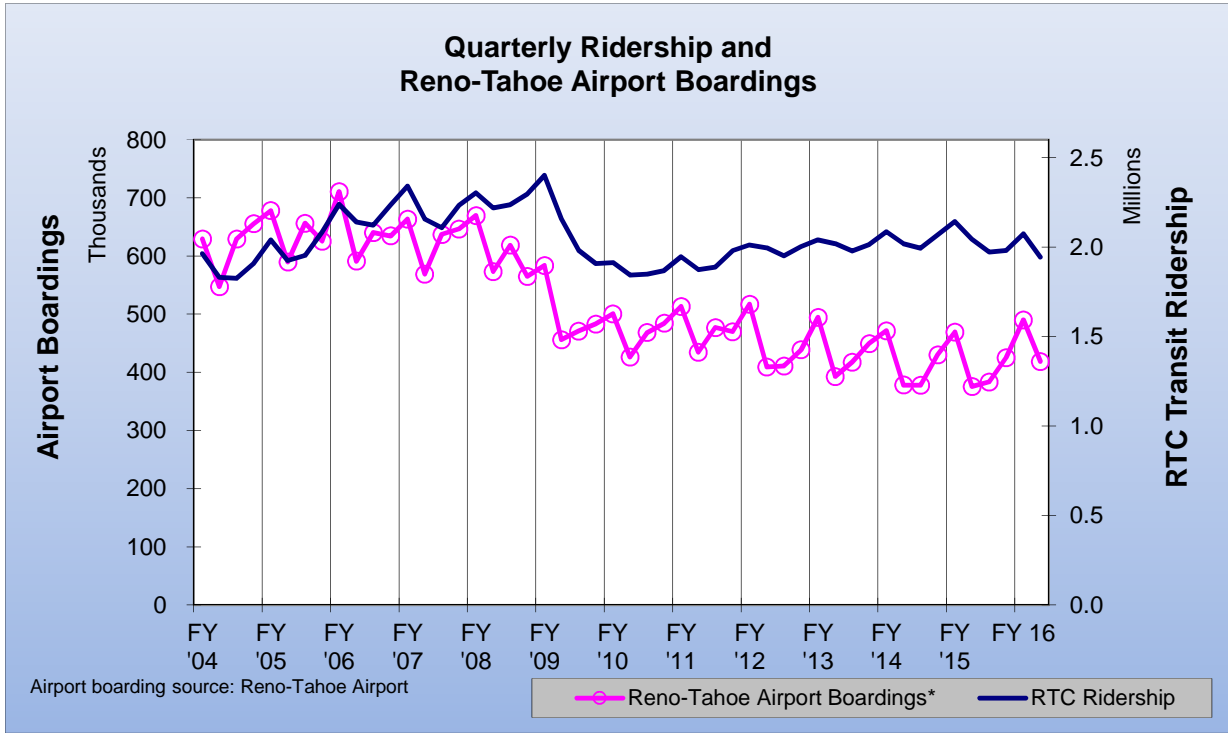
RTC Transit



RTC Transit



RTC Transit



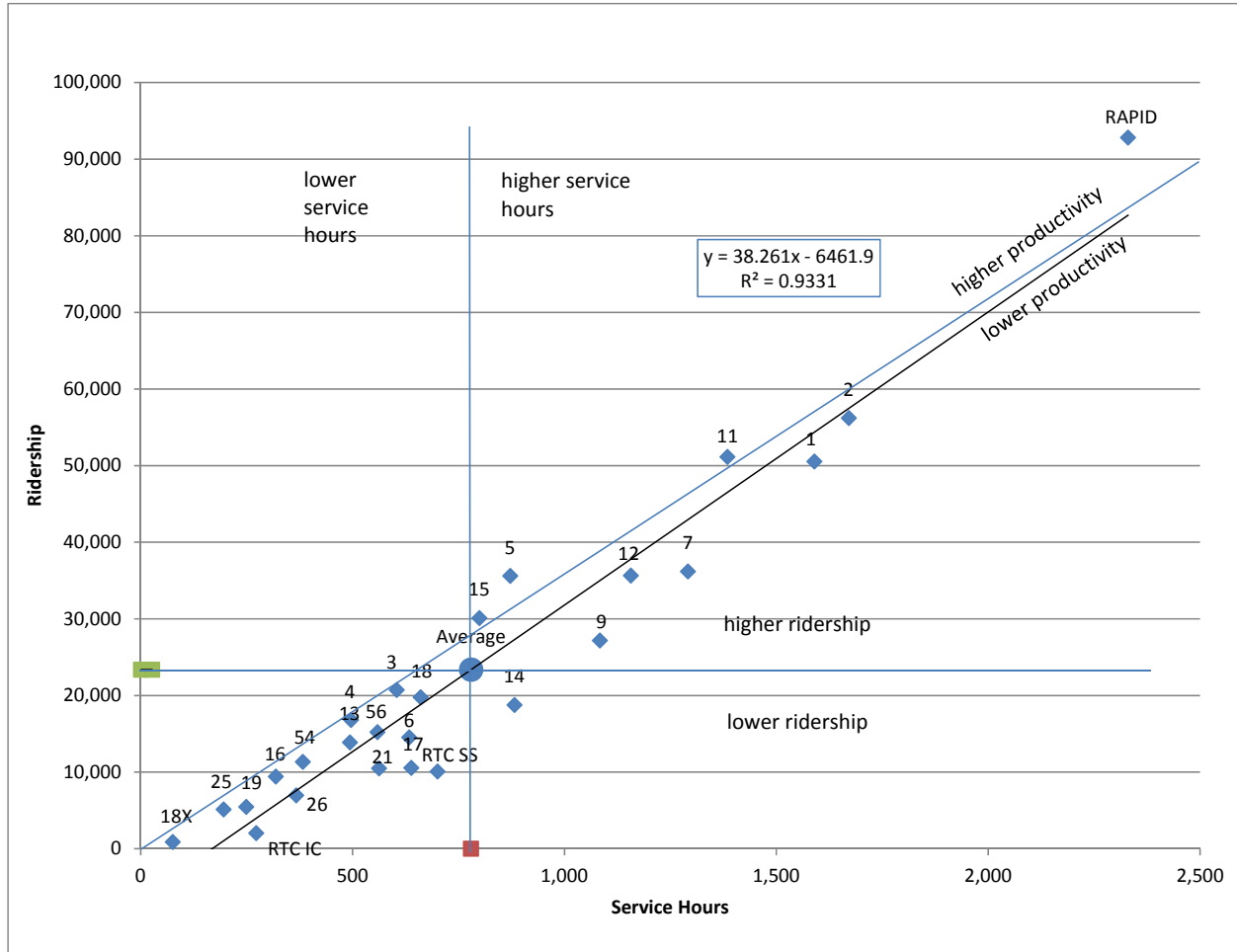
RTC ROUTE COMPARISON REPORT

FEBRUARY 2016

Route *	Productivity	Route	Svs Hours Change Fr. Last Year	Route	Ridership	Route	Ridership Change From Last Year
5	40.8	19	5.0%	RAPID	92,825	16	13.1%
RAPID	39.8	RTC IC	5.0%	2	56,217	54	12.3%
15	37.7	18X	5.0%	11	51,148	4	7.5%
11	36.9	25	4.4%	1	50,535	1	4.5%
3	34.3	18	4.3%	7	36,191	14	4.4%
4	33.8	SS	4.2%	12	35,642	12	1.6%
2	33.6	14	4.1%	5	35,614	15	1.2%
1	31.8	15	4.1%	15	30,104	5	0.1%
12	30.8	5	4.1%	9	27,180	26	-0.2%
TOTAL	30.0	12	4.0%	3	20,719	13	-0.6%
18	29.9	9	4.0%	18	19,775	6	-0.9%
54	29.6	56	4.0%	14	18,767	3	-1.1%
16	29.6	11	4.0%	4	16,795	18	-2.0%
13	28.1	6	4.0%	56	15,209	56	-2.3%
7	28.0	2	4.0%	6	14,537	19	-2.6%
56	27.2	3	4.0%	13	13,881	2	-2.8%
25	26.2	TOTAL	4.0%	54	11,332	TOTAL	-3.0%
9	25.1	21	3.9%	17	10,552	21	-4.9%
6	22.9	4	3.9%	21	10,489	9	-5.3%
19	22.0	7	3.9%	SS	10,087	17	-6.3%
14	21.3	16	3.8%	16	9,424	RAPID	-7.2%
26	19.0	RAPID	3.8%	26	6,968	11	-9.7%
21	18.7	54	3.8%	19	5,463	25	-9.8%
17	16.5	17	3.8%	25	5,127	7	-11.1%
SS	14.4	13	3.7%	RTC IC	2,033	SS	-12.1%
18X	11.6	26	3.7%	18X	876	18X	-24.5%
RTC IC	7.5	1	3.6%	TOTAL	607,490	RTC IC	-28.5%

* - RTC IC is RTC INTERCITY. RTC SS is RTC SIERRA SPIRIT

RTC Route Comparison Chart FEBRUARY 2016



"higher" and "lower" refer to higher or lower than the average of all routes (not the system average)

FEBRUARY 2016

	ROUTE							
	RAPID	1	2	3	4	5	6	7
Total Ridership	92,825	50,535	56,217	20,719	16,795	35,614	14,537	36,191
Previous Year (FEB 2015)	100,055	48,374	57,834	20,946	15,618	35,594	14,665	40,703
Change	-7.2%	4.5%	-2.8%	-1.1%	7.5%	0.1%	-0.9%	-11.1%
Average Daily Ridership	3,201	1,743	1,939	714	579	1,228	501	1,248
Days Route Operated	29	29	29	29	29	29	29	29
Revenue Veh. Hours	2,329.9	1,589.7	1,671.0	604.1	496.3	872.0	633.8	1,291.4
Previous Year (FEB 2015)	2,245.1	1,534.9	1,606.7	581.0	477.8	838.0	609.4	1,243.5
Change	3.8%	3.6%	4.0%	4.0%	3.9%	4.1%	4.0%	3.9%
Passengers / RVH	39.8	31.8	33.6	34.3	33.8	40.8	22.9	28.0
Previous Year (FEB 2015)	44.6	31.5	36.0	36.1	32.7	42.5	24.1	32.7
Change	-10.6%	0.9%	-6.5%	-4.9%	3.5%	-3.8%	-4.7%	-14.4%
Revenue Vehicle Miles	20,900	12,047	17,429	8,445	6,442	11,503	5,820	24,307
Passengers / RVM	4.44	4.19	3.23	2.45	2.61	3.10	2.50	1.49
Previous Year (FEB 2015)	4.97	4.16	3.43	2.59	2.51	3.24	2.62	1.74
Change	-10.6%	0.9%	-5.8%	-5.3%	3.8%	-4.4%	-4.7%	-14.4%
One-Way Trips	4,342	2,494	2,496	1,248	993	1,706	1,273	1,939
Deadhead Miles	1,337.1	588.4	1,238.9	970.0	395.5	589.1	388.9	693.0
Deadhead Hours	84.63	22.72	49.76	40.95	13.00	25.55	20.40	25.15
Est. Gross Operating Cost	\$251,844	\$171,831	\$180,617	\$65,300	\$53,648	\$94,252	\$68,508	\$139,588
Est. Cost Per RVH	\$108.09	\$108.09	\$108.09	\$108.09	\$108.09	\$108.09	\$108.09	\$108.09
Est. Cost Per RVM	\$12.05	\$14.26	\$10.36	\$7.73	\$8.33	\$8.19	\$11.77	\$5.74
Est. Cost Per Passenger	\$2.71	\$3.40	\$3.21	\$3.15	\$3.19	\$2.65	\$4.71	\$3.86

FEBRUARY 2016

	ROUTE							
	9	11	12	13	14	15	16	17
Total Ridership	27,180	51,148	35,642	13,881	18,767	30,104	9,424	10,552
Previous Year (FEB 2015)	28,687	56,658	35,075	13,970	17,970	29,746	8,335	11,267
Change	-5.3%	-9.7%	1.6%	-0.6%	4.4%	1.2%	13.1%	-6.3%
Average Daily Ridership	937	1,764	1,229	479	647	1,038	325	364
Days Route Operated	29	29	29	29	29	29	29	29
Revenue Veh. Hours	1,083.6	1,384.5	1,156.6	493.6	882.0	799.1	318.7	638.3
Previous Year (FEB 2015)	1,041.7	1,331.2	1,111.7	475.9	846.9	767.7	307.0	615.2
Change	4.0%	4.0%	4.0%	3.7%	4.1%	4.1%	3.8%	3.8%
Passengers / RVH	25.1	36.9	30.8	28.1	21.3	37.7	29.6	16.5
Previous Year (FEB 2015)	27.5	42.6	31.5	29.4	21.2	38.7	27.1	18.3
Change	-8.9%	-13.2%	-2.3%	-4.2%	0.3%	-2.8%	8.9%	-9.7%
Revenue Vehicle Miles	10,689	10,918	12,478	4,119	8,594	9,131	2,862	12,268
Passengers / RVM	2.54	4.68	2.86	3.37	2.18	3.30	3.29	0.86
Previous Year (FEB 2015)	2.81	5.40	2.90	3.54	2.18	3.41	2.96	0.97
Change	-9.4%	-13.3%	-1.7%	-4.8%	0.1%	-3.3%	11.1%	-11.1%
One-Way Trips	1,748	3,529	1,735	1,001	1,804	1,519	980	967
Deadhead Miles	585.1	710.0	625.0	163.1	683.1	474.5	219.9	441.6
Deadhead Hours	21.23	29.32	22.68	8.58	31.40	24.15	7.87	15.81
Est. Gross Operating Cost	\$117,126	\$149,655	\$125,021	\$53,350	\$95,331	\$86,378	\$34,451	\$68,998
Est. Cost Per RVH	\$108.09	\$108.09	\$108.09	\$108.09	\$108.09	\$108.09	\$108.09	\$108.09
Est. Cost Per RVM	\$10.96	\$13.71	\$10.02	\$12.95	\$11.09	\$9.46	\$12.04	\$5.62
Est. Cost Per Passenger	\$4.31	\$2.93	\$3.51	\$3.84	\$5.08	\$2.87	\$3.66	\$6.54

FEBRUARY 2016

	ROUTE					
	18	18X	19	21	25	26
Total Ridership	19,775	876	5,463	10,489	5,127	6,968
Previous Year (FEB 2015)	20,177	1,160	5,609	11,025	5,683	6,983
Change	-2.0%	-24.5%	-2.6%	-4.9%	-9.8%	-0.2%
Average Daily Ridership	682	42	260	362	205	240
Days Route Operated	29	21	21	29	25	29
Revenue Veh. Hours	660.6	75.6	248.9	562.2	195.7	366.8
Previous Year (FEB 2015)	633.2	72.0	237.0	540.9	187.5	353.7
Change	4.3%	5.0%	5.0%	3.9%	4.4%	3.7%
Passengers / RVH	29.9	11.6	22.0	18.7	26.2	19.0
Previous Year (FEB 2015)	31.9	16.1	23.7	20.4	30.3	19.7
Change	-6.1%	-28.1%	-7.2%	-8.5%	-13.6%	-3.8%
Revenue Vehicle Miles	7,493	931	2,423	6,853	2,645	4,353
Passengers / RVM	2.64	0.94	2.25	1.53	1.94	1.60
Previous Year (FEB 2015)	2.80	1.30	2.39	1.68	2.27	1.68
Change	-5.7%	-27.9%	-5.6%	-8.6%	-14.5%	-4.5%
One-Way Trips	1,352	168	504	1,738	618	1,095
Deadhead Miles	575.3	0.0	161.1	305.9	105.9	399.7
Deadhead Hours	26.25	0.00	7.35	12.63	4.38	13.51
Est. Gross Operating Cost	\$71,405	\$8,172	\$26,899	\$60,769	\$21,154	\$39,646
Est. Cost Per RVH	\$108.09	\$108.09	\$108.09	\$108.09	\$108.09	\$108.09
Est. Cost Per RVM	\$9.53	\$8.78	\$11.10	\$8.87	\$8.00	\$9.11
Est. Cost Per Passenger	\$3.61	\$9.33	\$4.92	\$5.79	\$4.13	\$5.69

FEBRUARY 2016

	ROUTE			
	54	56	RTC IC	SS MISC SERVICE
Total Ridership	11,332	15,209	2,033	10,087
Previous Year (FEB 2015)	10,090	15,573	2,843	11,477
Change	12.3%	-2.3%	-28.5%	-12.1%
Average Daily Ridership	391	524	97	560
Days Route Operated	29	29	21	18
Revenue Veh. Hours	382.6	558.8	272.7	700.2
Previous Year (FEB 2015)	368.7	537.3	259.7	672.0
Change	3.8%	4.0%	5.0%	4.2%
Passengers / RVH	29.6	27.2	7.5	14.4
Previous Year (FEB 2015)	27.4	29.0	10.9	17.1
Change	8.2%	-6.1%	-31.9%	-15.7%
Revenue Vehicle Miles	6,117	8,301	8,632	5,773
Passengers / RVM	1.85	1.83	0.24	1.75
Previous Year (FEB 2015)	1.72	1.96	0.35	1.85
Change	7.8%	-6.4%	-31.9%	-5.3%
One-Way Trips	772	1,140	252	2,542
Deadhead Miles	227.7	448.0	805.4	456.8
Deadhead Hours	8.70	15.80	36.75	23.20
Est. Gross Operating Cost	\$41,358	\$60,403	\$29,471	\$75,688
Est. Cost Per RVH	\$108.09	\$108.09	\$108.09	\$108.09
Est. Cost Per RVM	\$6.76	\$7.28	\$3.41	\$13.11
Est. Cost Per Passenger	\$3.65	\$3.97	\$14.50	\$7.50

Feb 2016

	SYSTEM TOTALS		PERCENT CHANGE
	Feb 2016	Feb 2015	
Cash Fares			
Adult	82,872	81,433	1.8%
Reduced	51,744	54,075	-4.3%
Total Cash Fares	134,616	135,508	-0.7%
Period Pass Fares			
Adult	163,047	156,813	4.0%
Reduced	153,982	170,126	-9.5%
Total Period Pass Fares	317,029	326,939	-3.0%
Transfers	93,029	96,676	-3.8%
Flow Through	7,876	7,297	7.9%
Free Rides	11,802	13,424	-12.1%
RTC ACCESS ID Cash	2,793	2,856	-2.2%
Stored Ride Pass	40,345	43,417	-7.1%
Adult Ridership	338,741	333,109	1.7%
Reduced	268,749	293,008	-8.3%
Total Ridership	607,490	626,117	-3.0%
Previous Year	626,117		
Change	-3.0%		
Average Daily Ridership	20,948	22,361	-6.3%
Days Route Operated	29	28	3.6%
Revenue Veh. Hours	20,269	19,495	4.0%
Previous Year	19,495		
Change	4.0%		
Passengers / RVH	30.0	32.1	-6.7%
Previous Year	32.1		
Change	-6.7%		
Revenue Vehicle Miles	231,475	223,073	3.8%
Passengers / RVM	2.62	2.81	-6.5%
Previous Year	2.81		
Change	-6.5%		
One-Way Trips	39,955	38,678	3.3%
Deadhead Miles	13,589	13,035	4.2%
Deadhead Hours	591.8	568.4	4.1%
Est. Gross Operating Cost	\$2,190,864	\$2,021,769	8.4%
Est. Cost Per RVH	\$108.09	\$103.70	4.2%
Est. Cost Per RVM	\$9.46	\$9.06	4.4%
Est. Cost Per Passenger	\$3.61	\$3.23	11.7%

Mar '15 - Feb '16

	ROUTE							
	RAPID	1	2	3	4	5	6	7
Total Ridership	1,282,400	644,650	737,581	267,528	207,152	451,161	189,893	474,774
Previous 12 Months	1,339,163	670,968	750,574	266,737	213,165	471,355	194,150	543,480
Change	-4.2%	-3.9%	-1.7%	0.3%	-2.8%	-4.3%	-2.2%	-12.6%
Average Daily Ridership	3,504	1,761	2,015	731	566	1,233	519	1,297
Days Route Operated	366	366	366	366	366	366	366	366
Revenue Veh. Hours	29,260	20,063	20,782	7,534	6,201	10,877	7,909	16,124
Previous 12 Months	29,159	20,008	20,726	7,508	6,184	10,829	7,878	16,087
Change	0.3%	0.3%	0.3%	0.3%	0.3%	0.4%	0.4%	0.2%
Passengers / RVH	43.8	32.1	35.5	35.5	33.4	41.5	24.0	29.4
Previous 12 Months	45.9	33.5	36.2	35.5	34.5	43.5	24.6	33.8
Change	-4.6%	-4.2%	-2.0%	0.0%	-3.1%	-4.7%	-2.6%	-12.8%
Revenue Vehicle Miles	262,471	152,045	218,390	104,777	80,715	142,854	72,622	303,351
Passengers / RVM	4.89	4.24	3.38	2.55	2.57	3.16	2.61	1.57
Previous 12 Months	5.12	4.43	3.44	2.56	2.65	3.32	2.68	1.79
Change	-4.6%	-4.2%	-1.9%	-0.1%	-3.1%	-4.7%	-2.6%	-12.8%
One-Way Trips	54,528	31,476	31,008	15,556	12,410	21,296	15,887	24,216
Deadhead Miles	16,816	7,426	15,255	11,921	5,057	7,277	4,821	8,626
Deadhead Hours	1,064.4	286.7	612.6	503.6	167.1	315.9	252.2	313.1
Est. Gross Operating Cost	\$3,119,893	\$2,139,292	\$2,215,834	\$803,265	\$661,216	\$1,159,779	\$843,307	\$1,719,215
Est. Cost Per RVH	\$106.63	\$106.63	\$106.62	\$106.63	\$106.63	\$106.63	\$106.63	\$106.63
Est. Cost Per RVM	\$11.89	\$14.07	\$10.15	\$7.67	\$8.19	\$8.12	\$11.61	\$5.67
Est. Cost Per Passenger	\$2.43	\$3.32	\$3.00	\$3.00	\$3.19	\$2.57	\$4.44	\$3.62

Mar '15 - Feb '16

	ROUTE							
	9	11	12	13	14	15	16	17
Total Ridership	348,749	687,606	446,008	173,009	226,557	360,461	105,395	141,304
Previous 12 Months	368,881	745,771	442,661	183,582	233,764	370,361	106,743	146,877
Change	-5.5%	-7.8%	0.8%	-5.8%	-3.1%	-2.7%	-1.3%	-3.8%
Average Daily Ridership	953	1,879	1,219	473	619	985	288	386
Days Route Operated	366	366	366	366	366	366	366	366
Revenue Veh. Hours	13,515	17,217	14,444	6,158	10,970	9,954	3,999	8,019
Previous 12 Months	13,461	17,171	14,377	6,149	10,921	9,910	3,984	7,992
Change	0.4%	0.3%	0.5%	0.1%	0.4%	0.4%	0.4%	0.3%
Passengers / RVH	25.8	39.9	30.9	28.1	20.7	36.2	26.4	17.6
Previous 12 Months	27.4	43.4	30.8	29.9	21.4	37.4	26.8	18.4
Change	-5.8%	-8.0%	0.3%	-5.9%	-3.5%	-3.1%	-1.6%	-4.1%
Revenue Vehicle Miles	132,737	135,987	156,729	51,116	106,708	113,184	36,584	152,817
Passengers / RVM	2.63	5.06	2.85	3.38	2.12	3.18	2.88	0.92
Previous 12 Months	2.79	5.50	2.84	3.60	2.20	3.29	2.92	0.97
Change	-5.9%	-8.1%	0.4%	-5.9%	-3.5%	-3.1%	-1.5%	-4.7%
One-Way Trips	21,800	44,040	21,662	12,480	22,431	18,946	12,296	12,150
Deadhead Miles	7,276	8,838	7,780	2,132	8,388	5,880	2,773	5,576
Deadhead Hours	264.1	364.8	282.4	111.2	385.9	298.7	99.3	199.6
Est. Gross Operating Cost	\$1,440,989	\$1,835,741	\$1,540,077	\$656,545	\$1,169,653	\$1,061,331	\$426,364	\$855,098
Est. Cost Per RVH	\$106.63	\$106.62	\$106.63	\$106.62	\$106.62	\$106.62	\$106.63	\$106.63
Est. Cost Per RVM	\$10.86	\$13.50	\$9.83	\$12.84	\$10.96	\$9.38	\$11.65	\$5.60
Est. Cost Per Passenger	\$4.13	\$2.67	\$3.45	\$3.79	\$5.16	\$2.94	\$4.05	\$6.05

Mar '15 - Feb '16

	ROUTE						RTC SH
	18	18X	19	21	25	26	
Total Ridership	250,850	13,930	68,297	138,642	65,381	90,651	
Previous 12 Months	270,861	15,868	71,913	149,244	72,932	93,350	1,583
Change	-7.4%	-12.2%	-5.0%	-7.1%	-10.4%	-2.9%	
Average Daily Ridership	685	54	267	379	213	248	
Days Route Operated	366	256	256	366	307	366	
Revenue Veh. Hours	8,161	922	3,034	7,004	2,398	4,611	
Previous 12 Months	8,126	914	3,010	6,986	2,393	4,598	221
Change	0.4%	0.8%	0.8%	0.3%	0.2%	0.3%	
Passengers / RVH	30.7	15.1	22.5	19.8	27.3	19.7	
Previous 12 Months	33.3	17.4	23.9	21.4	30.5	20.3	7.2
Change	-7.8%	-12.9%	-5.8%	-7.3%	-10.5%	-3.2%	
Revenue Vehicle Miles	92,872	11,384	30,003	85,240	32,104	54,317	
Passengers / RVM	2.70	1.22	2.28	1.63	2.04	1.67	
Previous 12 Months	2.93	1.40	2.41	1.76	2.28	1.72	0.29
Change	-7.8%	-12.9%	-5.6%	-7.4%	-10.6%	-3.2%	
One-Way Trips	16,708	2,048	6,144	21,656	7,574	13,759	
Deadhead Miles	7,187	0	1,964	3,818	1,303	4,958	
Deadhead Hours	327.9	0.0	89.6	157.6	53.9	168.4	
Est. Gross Operating Cost	\$870,140	\$98,259	\$323,436	\$746,835	\$255,719	\$491,620	
Est. Cost Per RVH	\$106.62	\$106.62	\$106.62	\$106.62	\$106.62	\$106.63	
Est. Cost Per RVM	\$9.37	\$8.63	\$10.78	\$8.76	\$7.97	\$9.05	
Est. Cost Per Passenger	\$3.47	\$7.05	\$4.74	\$5.39	\$3.91	\$5.42	

Mar '15 - Feb '16

	ROUTE				MISC
	54	56	RTC IC	SS	Service
Total Ridership	130,421	195,039	31,827	152,756	3,060
Previous 12 Months	133,360	200,993	35,791	134,027	3,856
Change	-2.2%	-3.0%	-11.1%	14.0%	-20.6%
Average Daily Ridership	356	533	124	430	
Days Route Operated	366	366	256	355	
Revenue Veh. Hours	4,802	6,966	3,324	8,788	
Previous 12 Months	4,787	6,941	3,298	8,760	
Change	0.3%	0.4%	0.8%	0.3%	
Passengers / RVH	27.2	28.0	9.6	17.4	
Previous 12 Months	27.9	29.0	10.9	15.3	
Change	-2.5%	-3.3%	-11.8%	13.6%	
Revenue Vehicle Miles	76,525	103,190	105,228	80,636	
Passengers / RVM	1.70	1.89	0.30	1.89	
Previous 12 Months	1.75	1.96	0.34	1.67	
Change	-2.5%	-3.3%	-11.9%	13.1%	
One-Way Trips	9,690	14,210	3,072	34,894	
Deadhead Miles	2,873	5,540	9,818	5,569	
Deadhead Hours	109.8	195.6	448.0	292.8	
Est. Gross Operating Cost	\$512,057	\$742,747	\$354,369	\$937,087	
Est. Cost Per RVH	\$106.63	\$106.63	\$106.62	\$106.63	
Est. Cost Per RVM	\$6.69	\$7.20	\$3.37	\$11.62	
Est. Cost Per Passenger	\$3.93	\$3.81	\$11.13	\$6.13	

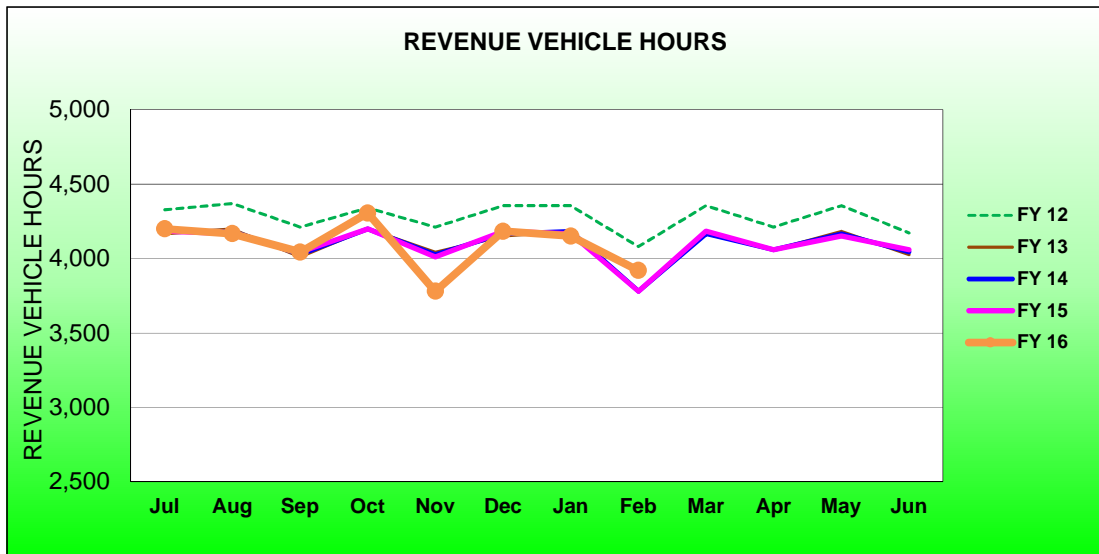
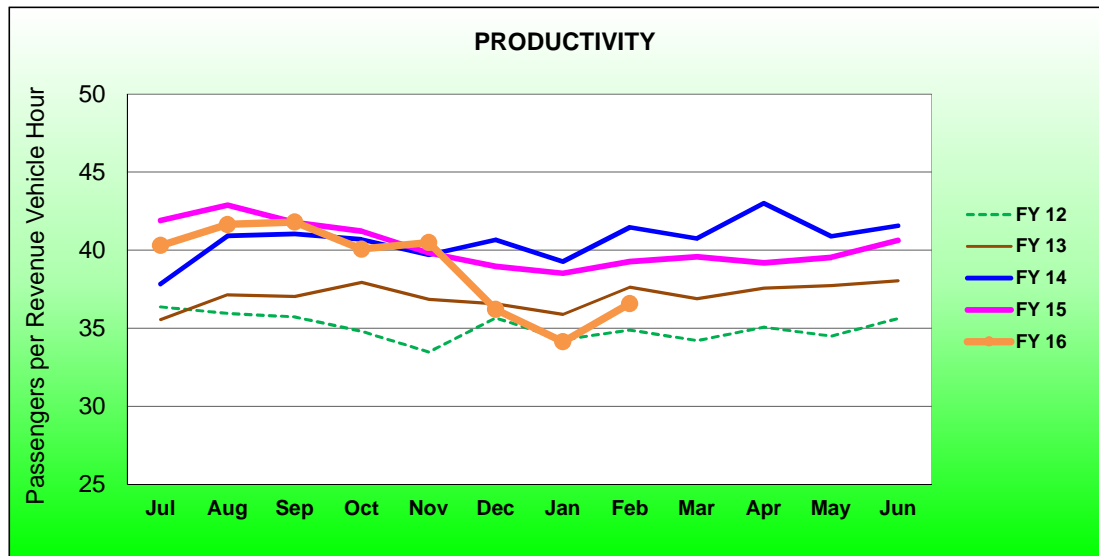
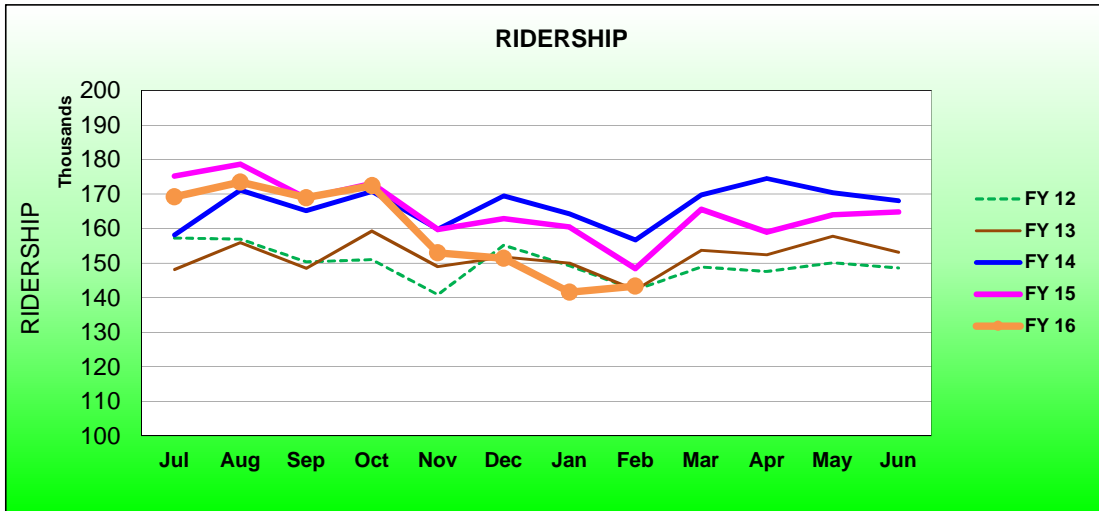
Mar 2015 - Feb 2016

	Current 12 Months	Previous 12 Month	PERCENT CHANGE
Cash Fares			
Adult	1,065,077	1,084,966	-1.8%
Reduced	667,830	701,629	-4.8%
Total Cash Fares	1,732,907	1,786,595	-3.0%
Period Pass Fares			
Adult	2,004,870	2,110,455	-5.0%
Reduced	2,099,845	2,130,693	-1.4%
Total Period Pass Fares	4,104,715	4,241,148	-3.2%
Transfers	1,197,029	1,269,846	-5.7%
Flow Through	95,699	91,935	4.1%
Free Rides	210,177	271,961	-22.7%
RTC ACCESS ID Cash	36,573	35,111	4.2%
Stored Ride Pass	507,982	535,414	-5.1%
Adult Ridership	4,383,080	4,511,400	-2.8%
Reduced	3,736,356	3,674,957	1.7%
Total Ridership	7,885,082	8,232,010	-4.2%
Previous 12 Months	8,232,010		
Change	-4.2%		
Average Daily Ridership	264,771	261,476	1.3%
Days Route Operated	366	365	0.3%
Revenue Veh. Hours	253,033	252,469	0.2%
Previous 12 Months	252,469		
Change	0.2%		
Passengers / RVH	31.2	32.6	-4.4%
Previous 12 Months	32.6		
Change	-4.4%		
Revenue Vehicle Miles	2,894,584	2,889,194	0.2%
Passengers / RVM	2.72	2.85	-4.4%
Previous 12 Months	2.85		
Change	-4.4%		
One-Way Trips	501,937	499,542	0.5%
Deadhead Miles	168,870	168,623	0.1%
Deadhead Hours	7,365	7,357	0.1%
Est. Gross Operating Cost	\$26,884,664	\$26,253,618	2.4%
Est. Cost Per RVH	\$106.25	\$103.99	2.2%
Est. Cost Per RVM	\$9.29	\$9.09	2.2%
Est. Cost Per Passenger	\$3.41	\$3.19	6.9%

RTC RAPID and CONNECT/Route 1						
ROLLING 12 MONTH COMPARISON						
Most Recent 12 Months			Percent Change	Previous 12 Months		
Month	Year	Ridership		Month	Year	Ridership
Mar	2015	165,544	-2.5%	Mar	2014	169,725
Apr		159,028	-8.9%	Apr		174,542
May		164,046	-3.7%	May		170,362
Jun		164,867	-1.9%	Jun		168,082
Jul		169,186	-3.5%	Jul		175,259
Aug		173,483	-2.9%	Aug		178,669
Sep		168,981	0.1%	Sep		168,865
Oct		172,491	-0.3%	Oct		173,063
Nov		153,023	-4.2%	Nov		159,715
Dec		151,403	-7.1%	Dec		162,927
Jan	2016	141,638	-11.7%	Jan	2015	160,493
Feb		143,360	-3.4%	Feb		148,429
TOTAL		1,927,050	-4.1%	TOTAL		2,010,131

Oct 11, 2009 RTC RAPID and RTC CONNECT introduced
 Aug 11, 2013 RTC CONNECT becomes Route 1

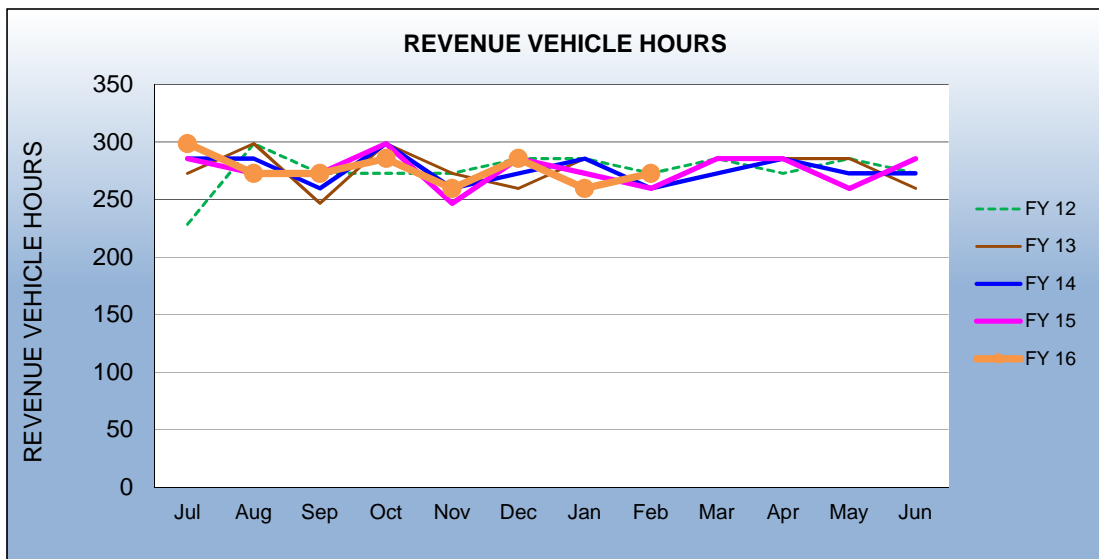
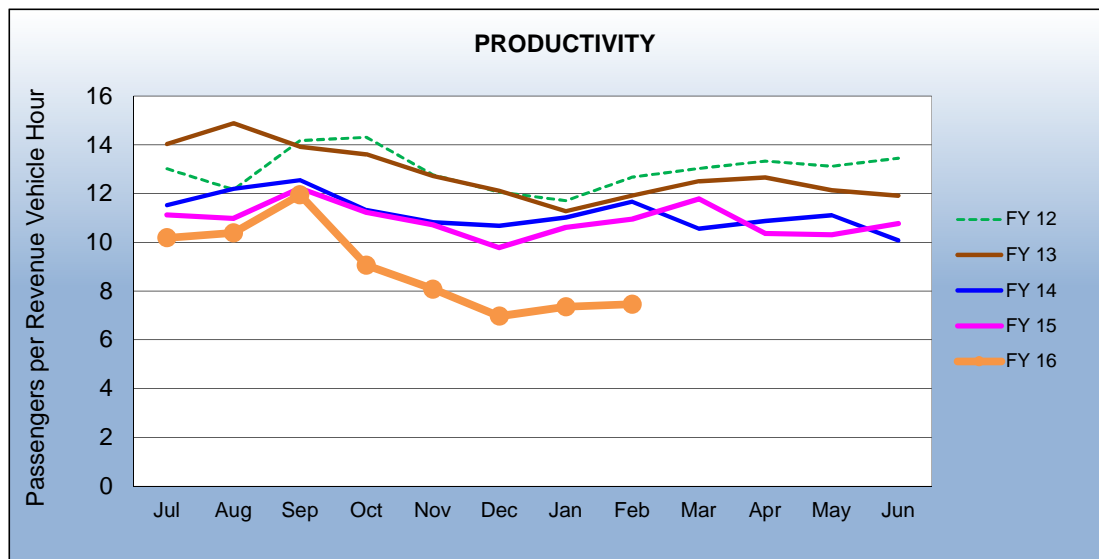
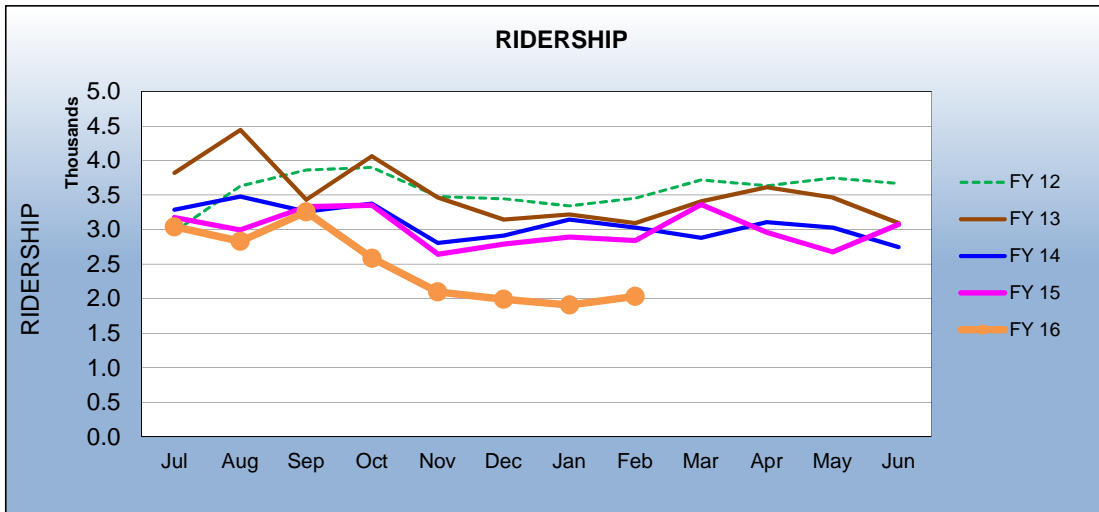
RTC RAPID and CONNECT/ROUTE 1 FISCAL YEAR COMPARISONS



RTC Transit Operating Statistics

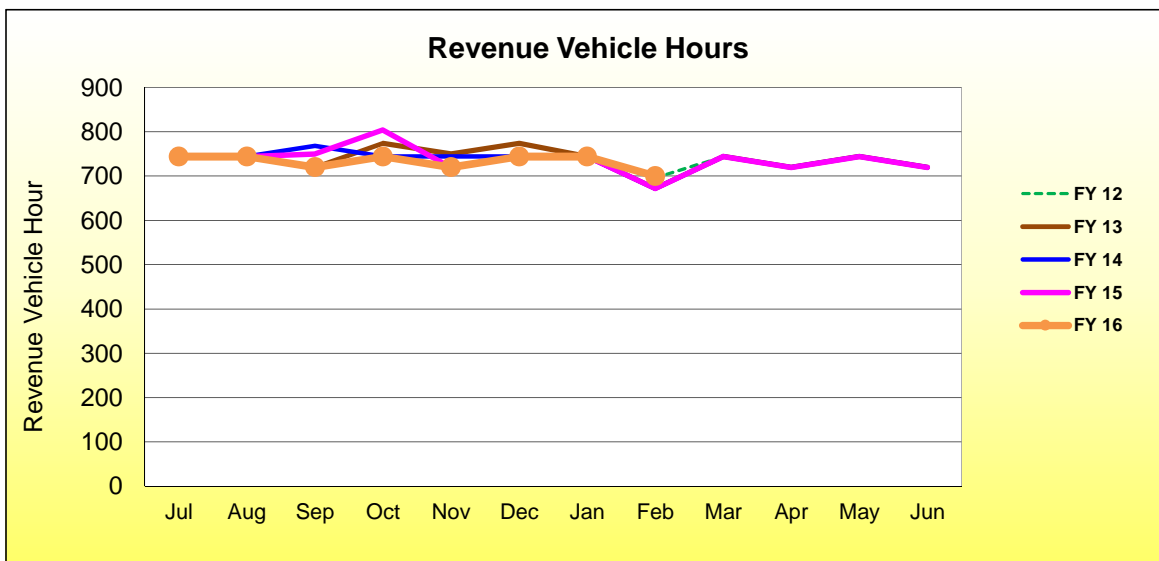
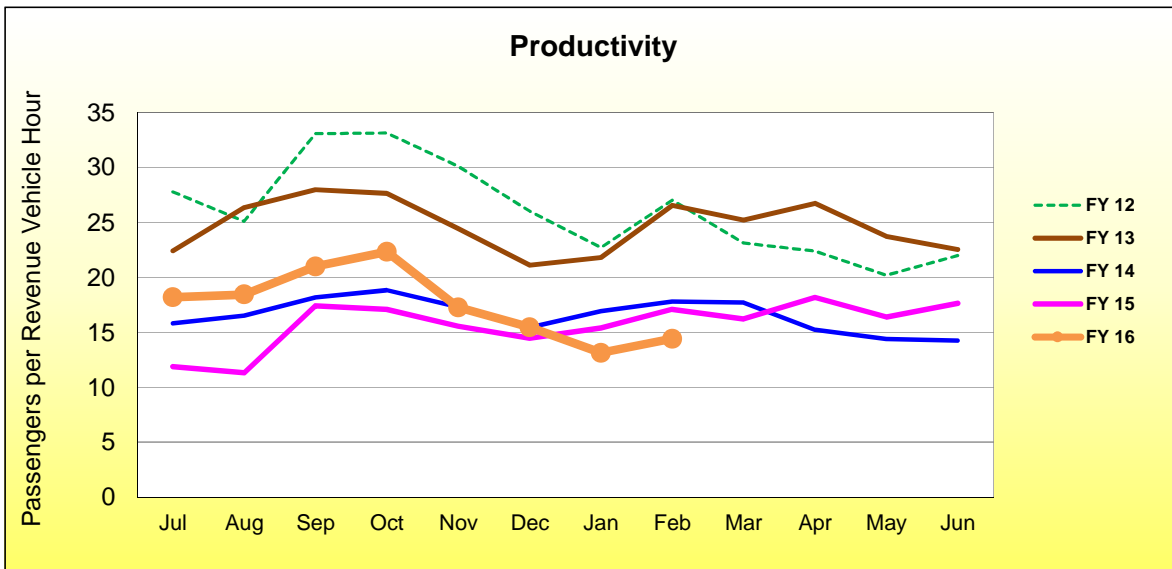
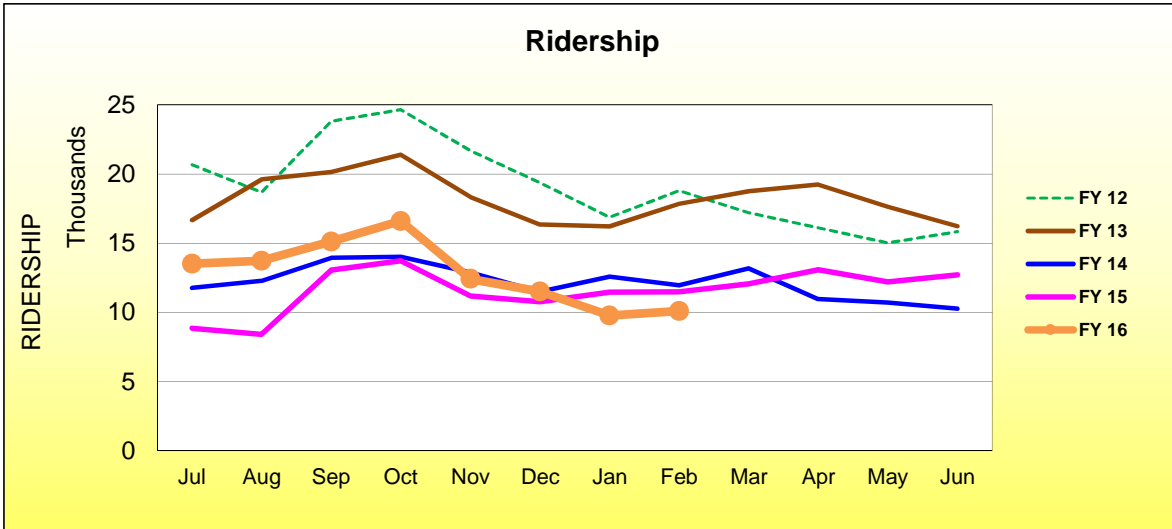
RTC INTERCITY						
ROLLING 12 MONTH COMPARISON						
Most Recent 12 Months			Percent Change	Previous 12 Months		
Month	Year	Ridership		Month	Year	Ridership
Mar	2015	3,365	16.9%	Mar	2014	2,879
Apr		2,962	-4.6%	Apr		3,106
May		2,676	-11.7%	May		3,029
Jun		3,076	11.9%	Jun		2,748
Jul		3,041	-4.3%	Jul		3,177
Aug		2,832	-5.4%	Aug		2,995
Sep		3,258	-2.2%	Sep		3,331
Oct		2,587	-22.8%	Oct		3,352
Nov		2,097	-20.7%	Nov		2,644
Dec		1,991	-28.7%	Dec		2,794
Jan	2016	1,909	-34.0%	Jan	2015	2,893
Feb		2,033	-28.5%	Feb		2,843
TOTAL		31,827	-11.1%	TOTAL		35,791

RTC INTERCITY FISCAL YEAR COMPARISONS



SIERRA SPIRIT						
ROLLING 12 MONTH COMPARISON						
Most Recent 12 Months			Percent Change	Previous 12 Months		
Month	Year	Ridership		Month	Year	Ridership
Mar	2015	12,055	-8.5%	Mar	2014	13,173
Apr		13,077	19.3%	Apr		10,961
May		12,192	13.9%	May		10,705
Jun		12,706	23.9%	Jun		10,257
Jul		13,527	53.0%	Jul		8,840
Aug		13,716	63.1%	Aug		8,411
Sep		15,102	15.6%	Sep		13,061
Oct		16,603	21.0%	Oct		13,726
Nov		12,418	11.0%	Nov		11,186
Dec		11,503	6.8%	Dec		10,773
Jan	2016	9,770	-14.7%	Jan	2015	11,457
Feb		10,087	-12.1%	Feb		11,477
TOTAL		152,756	14.0%	TOTAL		134,027

SIERRA SPIRIT FISCAL YEAR COMPARISONS



7/1/2013 25-cent adult and 10-cent reduced fare introduced

RTC TRANSIT RIDERSHIP REPORT
University of Nevada, Reno Wolf Pass Program
FY 2016

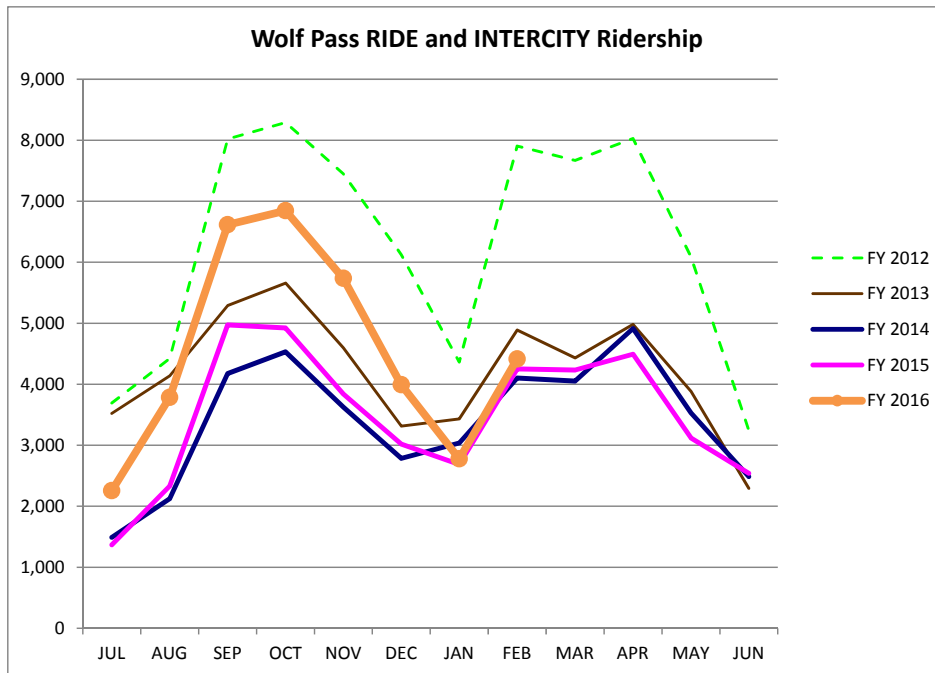
CATEGORY	JUL	AUG	SEP	OCT	NOV	DEC	JAN	FEB	MAR	APR	MAY	JUN	FYTD
RTC RIDE	2,199	3,718	6,453	6,723	5,640	3,944	2,701	4,298					35,676
RTC INTERCITY	57	66	162	123	96	47	77	117					745
RTC RIDE + INTERCITY	2,256	3,784	6,615	6,846	5,736	3,991	2,778	4,415					36,421
Percent Change	65%	62%	33%	39%	49%	32%	3.4%	3.8%					33%
Last Year (FY 2015)	1,368	2,331	4,973	4,922	3,843	3,019	2,686	4,252					27,394

HISTORIC RIDERSHIP

RTC RIDE AND RTC INTERCITY WOLF PASS

FY 2015	1,368	2,331	4,973	4,922	3,843	3,019	2,686	4,252	4,232	4,492	3,120	2,540	41,778
FY 2014	1,491	2,124	4,176	4,531	3,626	2,786	3,036	4,101	4,052	4,914	3,530	2,487	40,854
FY 2013	3,522	4,138	5,291	5,658	4,597	3,314	3,433	4,888	4,433	4,984	3,886	2,294	50,438
FY 2012	3,693	4,423	8,020	8,291	7,448	6,124	4,364	7,906	7,668	8,028	6,090	3,245	75,300
FY 2011	5,252	6,113	8,137	8,265	7,498	5,535	4,637	6,881	7,373	7,434	4,936	3,864	75,925
FY 2010	3,631	3,822	8,449	8,794	7,655	5,610	5,757	7,509	8,050	8,443	5,903	5,895	79,518
FY 2009	4,184	5,099	9,905	10,739	8,220	6,867	6,925	8,729	8,806	9,072	6,291	3,548	88,385
FY 2008	0	4,817	9,062	10,220	8,891	6,722	6,684	9,515	9,165	9,887	8,030	3,468	86,461
FY 2007	0	5,136	9,663	10,229	9,104	7,448	7,547	9,284	9,601	9,607	7,676	0	85,295
FY 2006	0	4,961	9,873	10,392	9,767	7,974	7,257	9,423	9,823	9,713	8,887	0	88,070
FY 2005	0	3,970	7,693	7,902	7,205	5,824	5,805	7,846	8,475	8,200	6,765	0	69,685
FY 2004	0	1,809	6,161	7,058	6,447	4,943	4,584	6,096	6,495	6,591	4,930	0	55,114
FY 2003	0	533	4,033	5,776	5,911	5,112	4,777	6,221	6,868	6,588	5,409	0	51,228

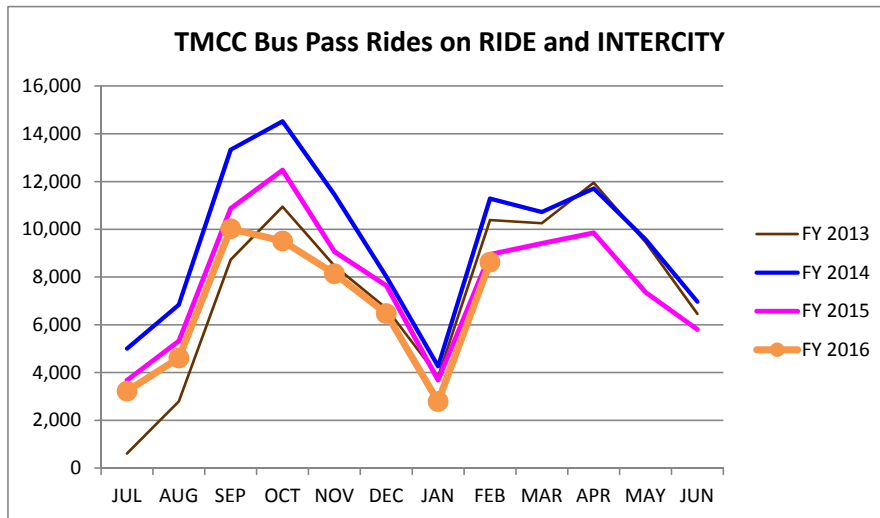
Aug 2007 data is estimated based on Sep ridership



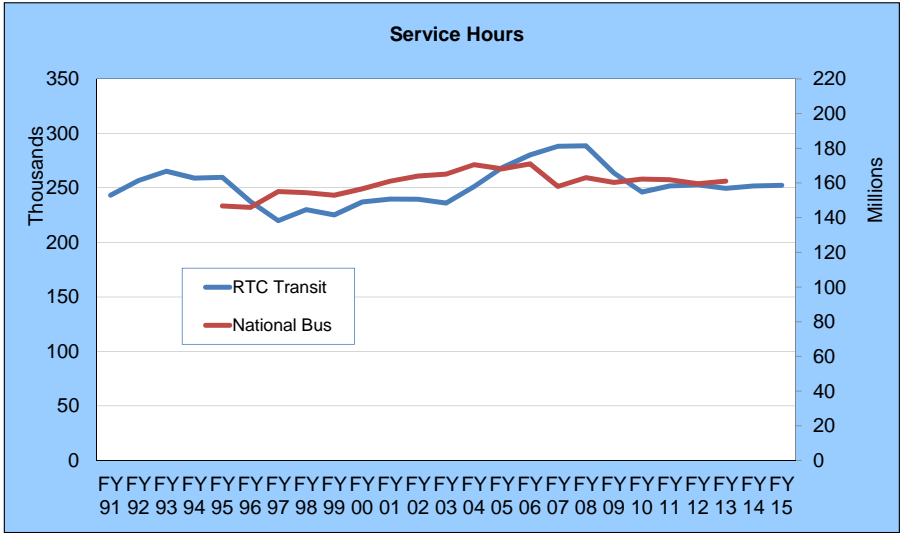
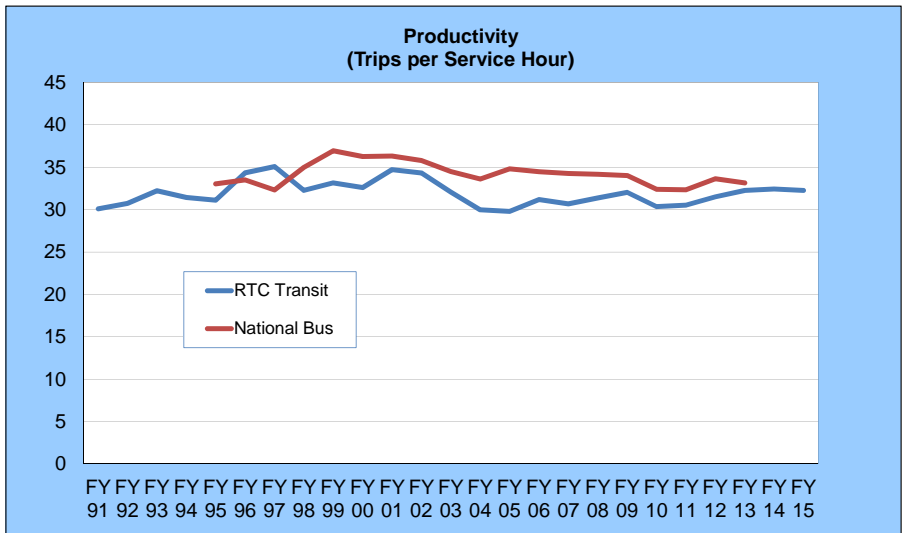
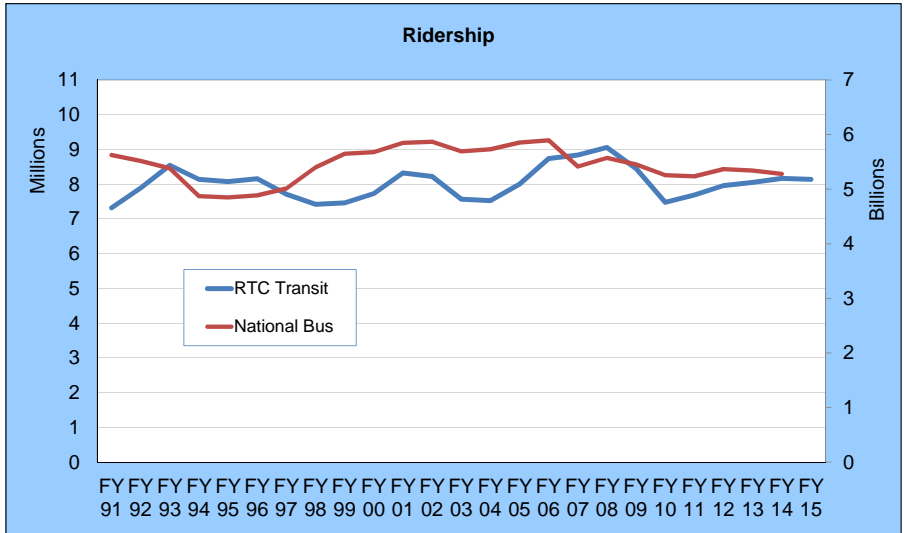
	RIDE	INTERCITY	RIDE and INTERCITY
FY 2015	39,949	1,829	41,778
FY 2014	38,471	2,383	40,854
FY 2013	46,928	3,510	50,438
FY 2012	71,438	3,862	75,300
FY 2011	72,048	3,877	75,925
FY 2010	75,283	4,235	79,518
FY 2009	82,712	5,673	88,385
FY 2008	83,966	2,495	86,461
FY 2007	82,752	2,543	85,295
FY 2006	88,070		88,070
FY 2005	69,685		69,685
FY 2004	55,114		55,114
FY 2003	51,228		51,228

RTC TRANSIT RIDERSHIP REPORT
Truckee Meadows Community College Lizard Pass Program
FY 2016

Fiscal Year	CATEGORY	JUL	AUG	SEP	OCT	NOV	DEC	JAN	FEB	MAR	APR	MAY	JUN	FYTD
FY 2016	RTC RIDE	3,210	4,599	10,005	9,496	8,123	6,456	2,784	8,620					53,293
	RTC INTERCITY	10	11	17	13	18	18	1	0					88
	Total	3,220	4,610	10,022	9,509	8,141	6,474	2,785	8,620					53,381
Perc. Change		-12%	-13%	-8%	-24%	-10%	-15%	-24%	-3.7%					-13%
FY 2015	Total	3,678	5,321	10,868	12,481	9,067	7,647	3,683	8,948					61,693
Historic Ridership														
RTC RIDE + INTERCITY	FY 2015	3,678	5,321	10,868	12,481	9,067	7,647	3,683	8,948	9,407	9,852	7,356	5,804	94,112
	FY 2014	5,003	6,837	13,330	14,523	11,462	8,019	4,265	11,287	10,725	11,706	9,574	6,969	113,700
	FY 2013	611	2,791	8,723	10,948	8,471	6,694	3,837	10,389	10,254	11,950	9,458	6,457	90,583
RTC RIDE	FY 2015	3,678	5,319	10,861	12,463	9,042	7,621	3,679	8,936	9,401	9,839	7,343	5,783	93,965
	FY 2014	4,995	6,825	13,319	14,507	11,453	8,014	4,251	11,276	10,715	11,682	9,565	6,963	113,565
	FY 2013	611	2,790	8,709	10,929	8,458	6,682	3,835	10,389	10,254	11,945	9,458	6,455	90,515
RTC INTERCITY	FY 2015	0	2	7	18	25	26	4	12	6	13	13	21	147
	FY 2014	8	12	11	16	9	5	14	11	10	24	9	6	135
	FY 2013	0	1	14	19	13	12	2	0	0	5	0	2	68

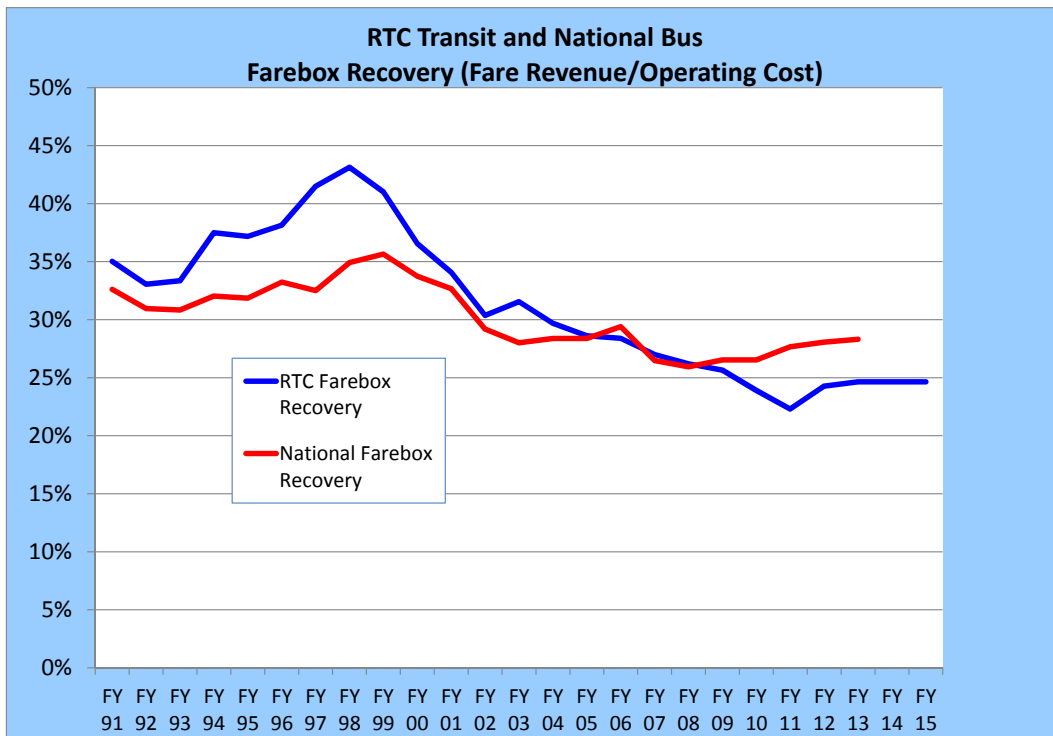
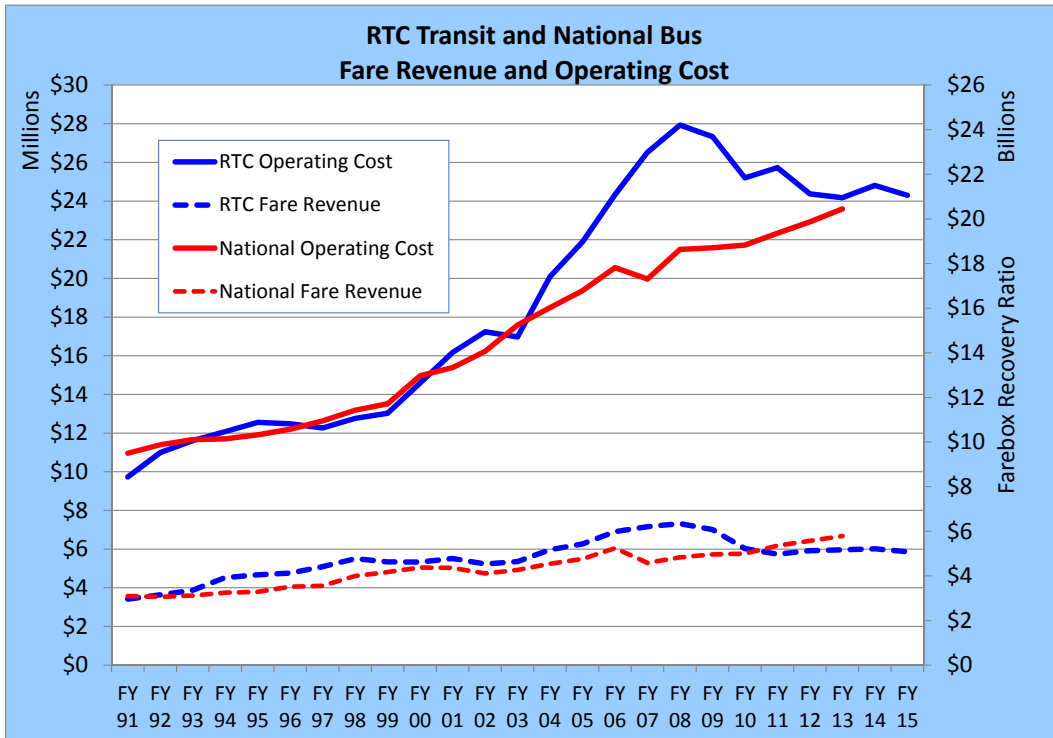


RTC Transit and National Bus Comparison



National bus data is based on APTA data

RTC Transit and National Bus Comparison



National bus data is based on APTA data

RTC Transit Ridership by Fare Category

	Adult	Reduced	Cash	Pass
FY 96	5,561,385	2,302,742	3,796,142	2,560,267
FY 97	5,160,106	2,271,790	3,464,511	2,529,988
FY 98	4,771,790	2,380,017	3,115,490	2,584,627
FY 99	4,716,813	2,480,895	3,065,373	2,653,028
FY 00	4,788,053	2,648,375	2,965,141	3,072,292
FY 01	5,108,696	2,908,807	2,988,850	3,488,200
FY 02	5,005,458	2,910,928	2,803,403	3,616,613
FY 03	4,594,536	2,629,981	2,603,683	3,169,422
FY 04	4,580,359	2,626,544	2,539,373	3,088,648
FY 05	4,870,916	2,694,693	2,582,039	2,790,914
FY 06	5,148,290	2,983,738	2,498,794	3,161,312
FY 07	4,991,833	3,226,773	2,283,889	3,503,177
FY 08	4,907,995	3,410,862	2,159,096	3,795,752
FY 09	4,416,321	3,353,032	1,876,468	3,843,590
FY 10	3,904,492	3,063,695	1,647,009	3,614,940
FY 11	4,047,258	3,150,680	1,689,314	3,730,268
FY 12	4,163,468	3,355,216	1,768,579	3,759,342
FY 13	4,438,622	3,612,328	1,784,653	3,800,928
FY 14	4,496,292	3,669,043	1,809,777	4,120,412
FY 15	4,403,004	3,737,904	1,770,525	4,202,882

