



REGIONAL TRANSPORTATION COMMISSION
Public Transportation • Streets and Highways • Planning



RTC Transit Fixed Route Bus Operating Statistics

**RTC RIDE
RTC RAPID
RTC REGIONAL CONNECTOR**

February 2024

RTC Transit Fixed Route Bus Operating Statistics Report

TABLE OF CONTENTS

RTC Transit Fixed Route Bus Highlights..... Page ii

RTC Transit Fixed Route Bus Summary Page iv

System Reports.....Page 1

Economic DataPage 5

Route Comparison Data.....Page 7

Monthly Operating Statistics.....Page 9

RTC RAPID Virginia Line & Route 1Page 14

RTC RAPID Lincoln Line & Route 11Page 16

RTC REGIONAL CONNECTOR Carson LinePage 18

RTC TMCC and UNR Education Pass.....Page 20

RTC Transit Fixed Route Bus Highlights

February 2024

RTC Transit Fixed Route Bus

- There was a service change effective January 6. Weekend schedules adjusted for Route 9. Weekday schedules adjusted for Route 16. Timing adjusted for Route 11. The 'Desert Skies' loop was removed for Route 5.
- For the month of February, there were 417,018 rides, **up 13.5%** compared with last year (page 1). Weighted average daily ridership was 15,294, **up 21%** compared with last year (page 3).
- For the most recent 12 months, there were 5.15 million rides **up 11%** compared with the previous 12 months.
- In February, there were 21,044 service hours, **up 5%** compared with last year (page 9).
- Productivity was 19.8 rides per service hour, **up 8.4%** compared with last year (page 9).

External Impacts on Ridership

- Weather was better this month compared with last year. There were nine days of rain and one day of snow this month compared with ten days of rain and eight days of snow last February. Average temperature this month was 41.2° F, up 5.3° F compared with last year.
- The Reno-Sparks area preliminary unemployment rate in January was 4.4%. Unemployment has been gradually trending upward since a low of 2.8% in December 2021.
- Nevada's preliminary unemployment rate for January was 5.2%. The national unemployment rate for January was 3.7% staying about the same for the last two years.

Historical Impacts Causing a Downward Trend in Bus Ridership

- According to Bureau of Labor Statistics, 27% of US employees worked remotely at least part of the time in 2023, with several academic surveys suggesting it is closer to 50%*.
- In April 2022, the City of Reno entered an agreement with Bird electric scooters to serve Reno.
- In 2021, Keolis transit workers went on strike August 3 to 13, September 27 to October 20, and November 9 to December 3. Limited service was provided on Routes 1, 7, and 11 and RTC REGIONAL CONNECTOR to Carson City. RTC provided free rides on RIDE, FlexRIDE, taxis, and UberX during the second and third strikes.
- A combination of the pandemic, stimulus checks, easy car financing, and gig jobs requiring cars has likely resulted in a large number of people abandoning transit for car ownership.
- In response to the COVID-19 pandemic, Governor Sisolak ordered the shutdown of casinos and other nonessential businesses in March 2020. In May 2020, Governor Sisolak reopened a number of businesses including bars, salons, gyms, and retail. Casinos were allowed to reopen in June 2020. In May 2021, maximum business capacity increased to 100% in Washoe County.
- There has been an increase in people working primarily from home, approximately eight million in 2018 according to US Census Bureau estimates, taking over transit as the second most common means of getting to work.
- While employment has increased in the region, the makeup of local employment has significantly changed. When Reno was a tourism and gaming town, a large portion of employment was in the low-wage, service industry whereas recently jobs tend to be higher wage and geographically dispersed requiring cars.
- Uber started permanent service in Reno in 2015 and Lyft started shortly after.
- As of 2014, Nevada provides driver's licenses for people who are undocumented immigrants.
- As downtown and midtown areas in-fill and gentrify, this also pushes lower income people to the suburbs where they are much more likely to need cars. This is a nationwide trend.
- The drop in ridership (before COVID) has been a nationwide trend as illustrated by the chart on page 4 which compares RTC transit ridership with US and Canadian bus ridership.
- With the growth of online shopping and food delivery, it is also likely that bus trips used for shopping and dining out has fallen substantially, especially for those with mobility challenges who would prefer online shopping and food delivery. Also, people without cars may decide to purchase a car with the intention of using the car to deliver food and finance the car.

* - <https://www.forbes.com/sites/forbesfinancecouncil/2023/11/06/changing-environment-altering-employer-obligations-for-remote-workers/?sh=7c9e531e2145>



RTC Transit Fixed Route Bus Summary

Route Ridership

- For February, Route 1 (serving S Virginia St between downtown Reno and Meadowood Mall) had the highest productivity in the system with 27.3 rides per service hour (page 7).
- Route 18 (serving E 2nd St, Walmart, and Sparks Industrial) had the second highest productivity with 26.5 rides per service hour.
- Route 5 (serving Sutro and Sun Valley) came in third with 22.7.
- Route 11 ridership increased the most over last year by 77.2%. In May 2023, Routes 3 and 26 were eliminated with Route 11 absorbing parts of Routes 3 and 26.
- Route 21 (serving Sparks and Marina) had the second highest increase in ridership at 36.1%.
- Route 13 (VA Hospital and Grove) had the third highest increase in ridership at 32.5%.

RTC RAPID (Virginia & Lincoln Lines Combined)

- This month, there were 111,895 rides on RTC RAPID **up 17%** compared with last year. By comparison, system ridership was up 13%. Productivity of RTC RAPID at 25.4 rides per service hour was **up 15%** compared with last year. By comparison, system productivity was 19.8 rides per service hour, **up 8.4%** compared with last year.
- There were 1.39 million rides over the most recent 12 months, **up 25%** compared with the previous 12 months.
- RAPID rides now make up 27% of system ridership.
- 46.2% of all system rides were taken on RAPID and Routes 1 and 11.

RTC RAPID Virginia Line

- This month, there were 78,168 rides on the Virginia Line **up 19%** compared with last year. Productivity at 26.2 rides per service hour is **up 18%** compared with last year.
- Ridership for both the Virginia Line and Route 1 was 111,239 **up 11.8%** compared with last year (page 14). There were 1.37 million rides over the most recent 12 months, **up 12%** compared with the previous 12 months.

RTC RAPID Lincoln Line

- This month, there were 33,727 rides on the Lincoln Line **up 12%** compared with last year. Productivity at 23.8 rides per service hour is **up 10%** compared with last year.
- Ridership for both the Lincoln Line and Route 11 was 81,020 **up 43%** compared with last year (page 16). There were 936K rides for the most recent 12 months, **up 27%** compared with the previous 12 months.

RTC REGIONAL CONNECTOR Carson Line

- There were 1,419 rides this month, **up 10%** compared with last February (page 18). At 5.3 rides per service hour, productivity is the same compared with last year. There were 19,936 rides for the most recent 12 months, **up 17%** compared with the previous 12 months.

RTC TMCC and UNR Education Pass

- There were 11,077 UNR Ed-Pass rides, **up 39%** compared with last year (page 20). **This is the highest February ridership ever for any UNR pass program.**
- There were 8,520 TMCC Ed-Pass rides, **up 82%** compared with last year.

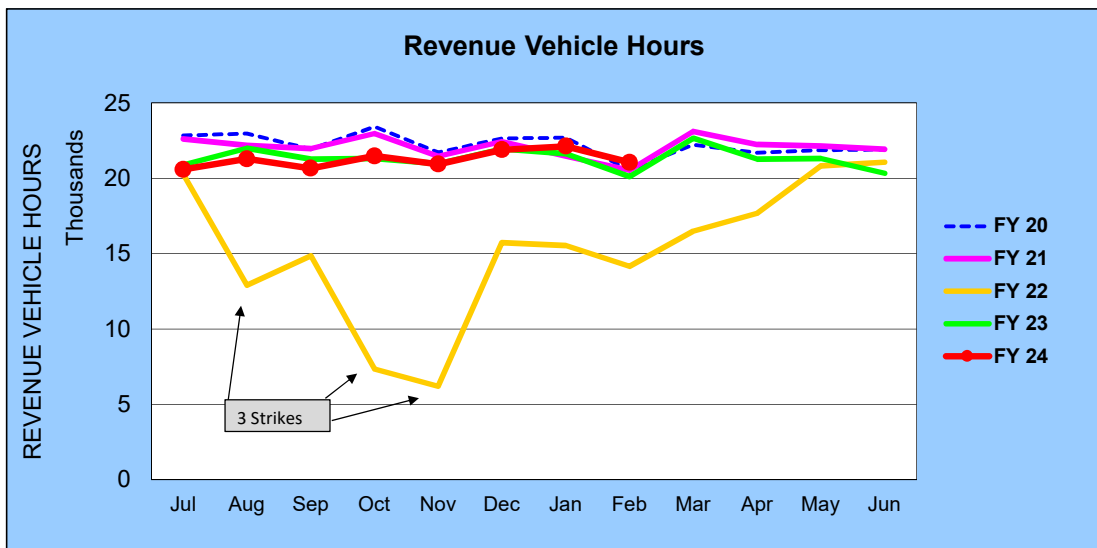
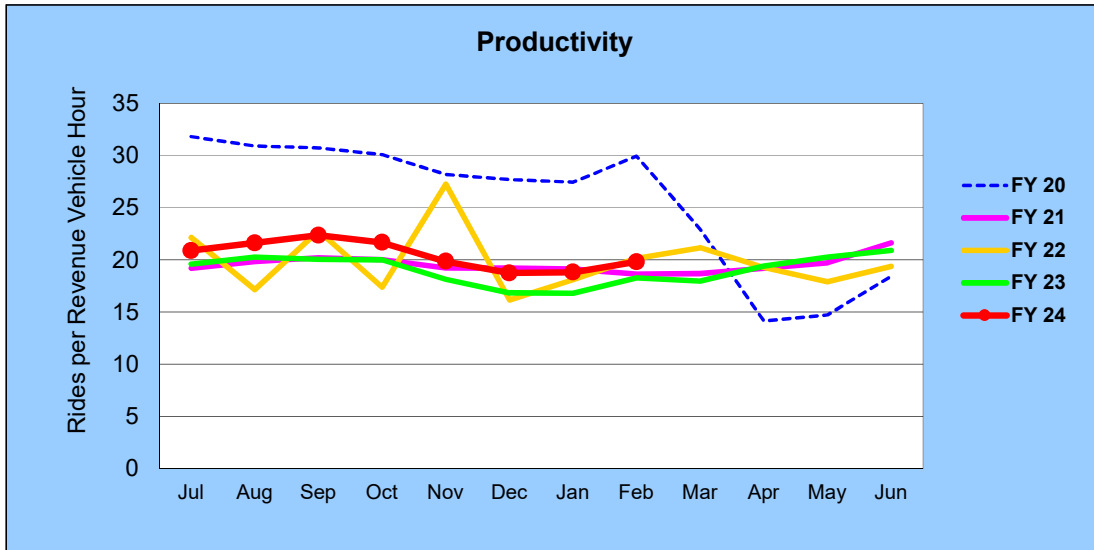
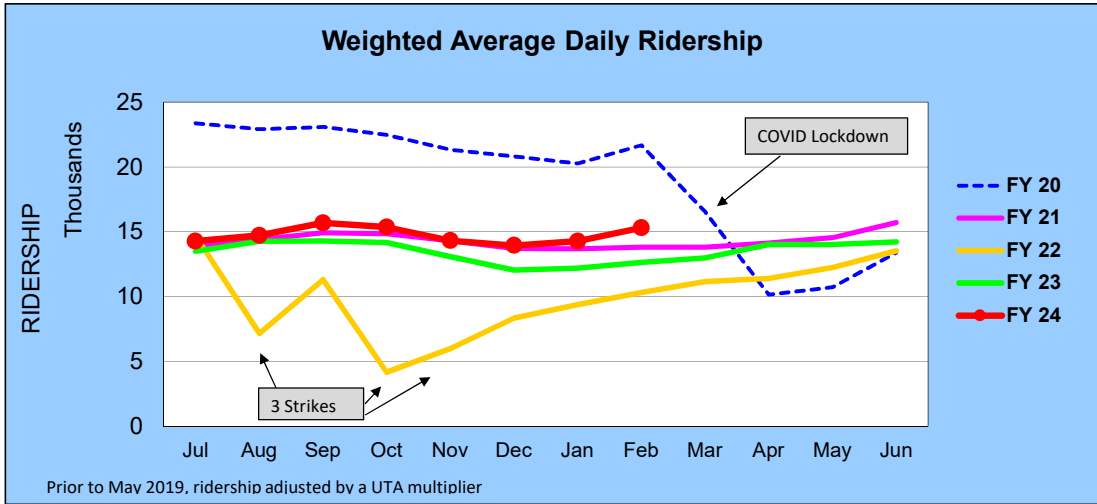
RTC Transit Operating Statistics

RTC Transit Fixed Route Bus						
Rolling 12-Month Ridership Comparison						
Most Recent 12 Months			Percent Change	Previous 12 Months		
Month	Year	Ridership		Month	Year	Ridership
Mar	2023	407,074	17%	Mar	2022	349,080
Apr		412,674	21%	Apr		340,721
May		432,170	16%	May		372,742
Jun		425,106	4.2%	Jun		408,079
Jul		429,718	4.9%	Jul		409,457
Aug		460,384	3.2%	Aug		445,976
Sep		461,670	8.2%	Sep		426,698
Oct		465,243	9.2%	Oct		426,167
Nov		415,646	9.4%	Nov		380,081
Dec		410,240	11.0%	Dec		369,598
Jan	2024	416,157	14.6%	Jan	2023	363,174
Feb		417,018	13.5%	Feb		367,575
TOTAL		5,153,100	11%	TOTAL		4,659,348

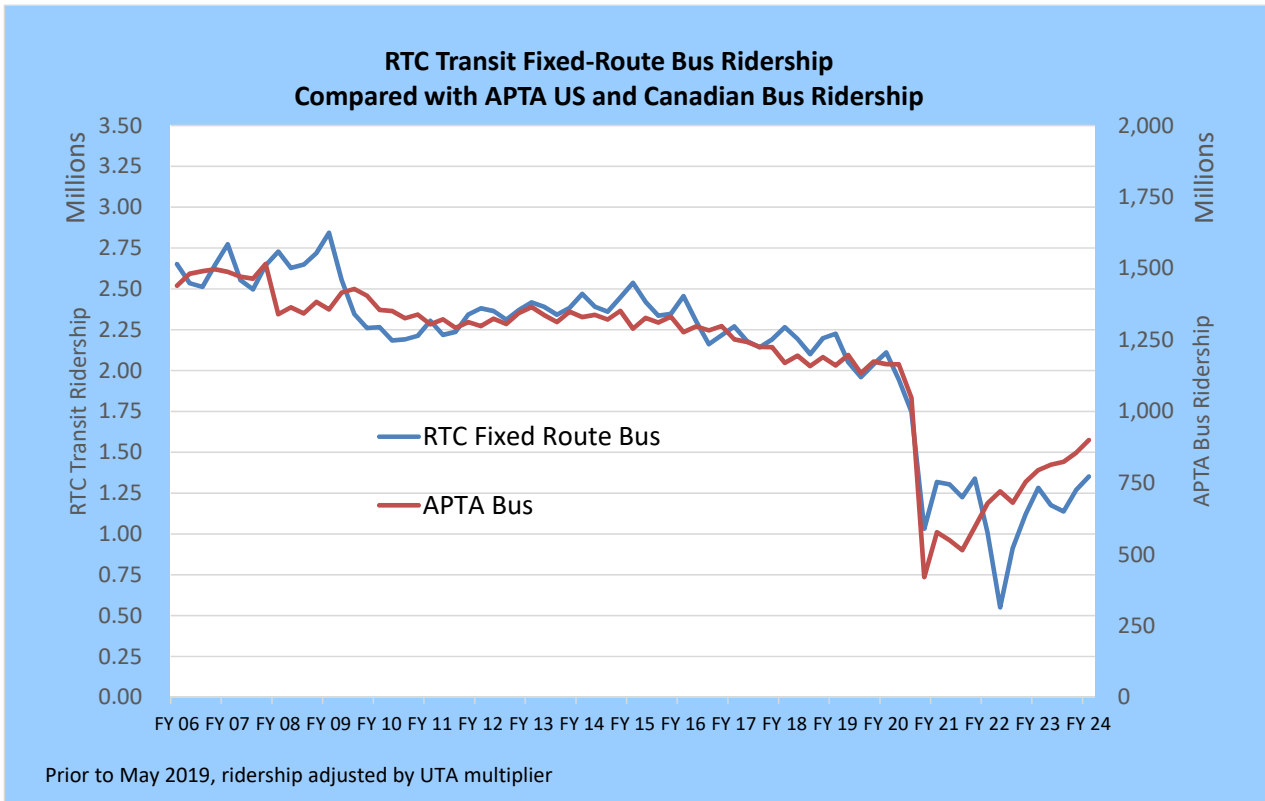
RTC Transit includes RTC RIDE, RTC RAPID, & RTC REGIONAL CONNECTOR

RTC Transit Fixed Route Bus

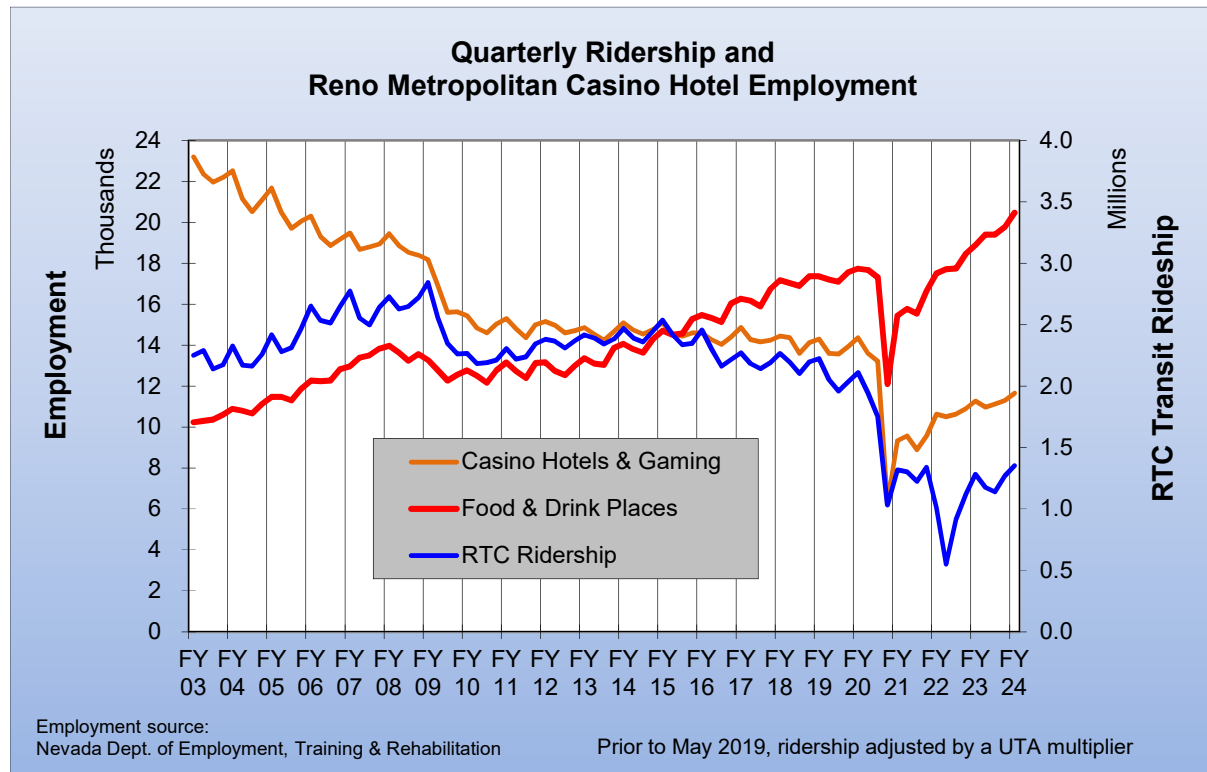
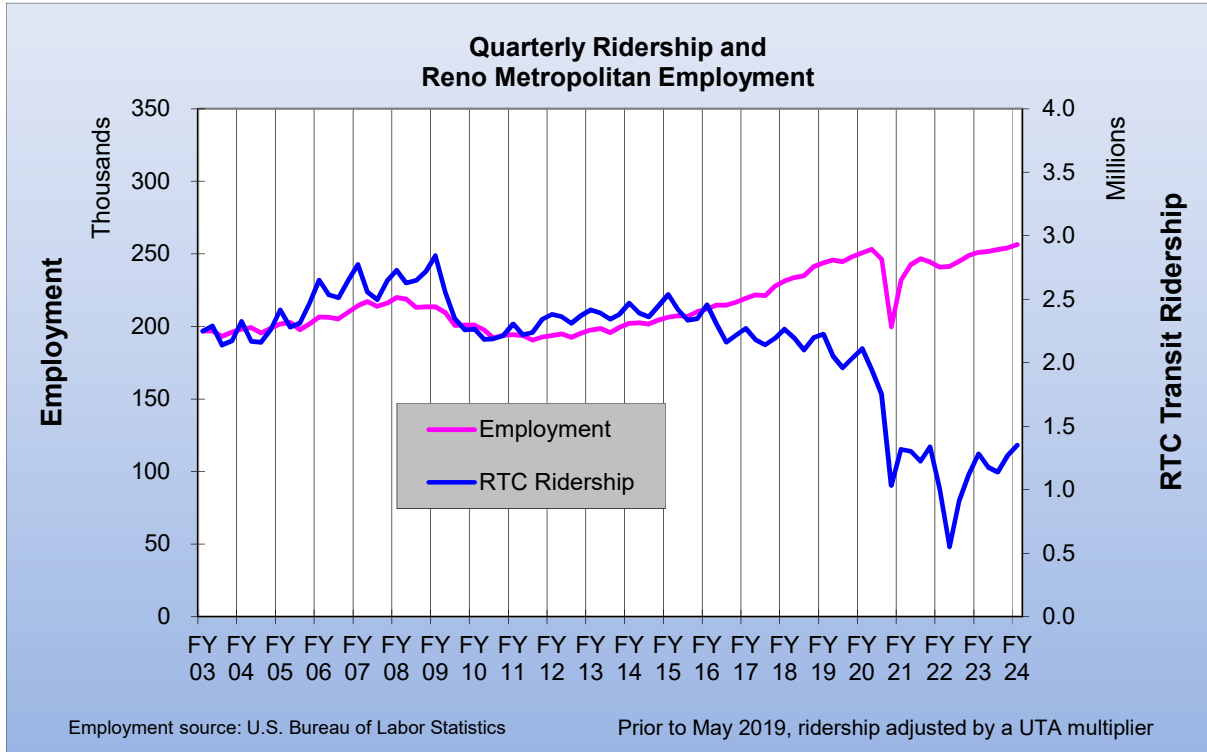
FISCAL YEAR COMPARISONS



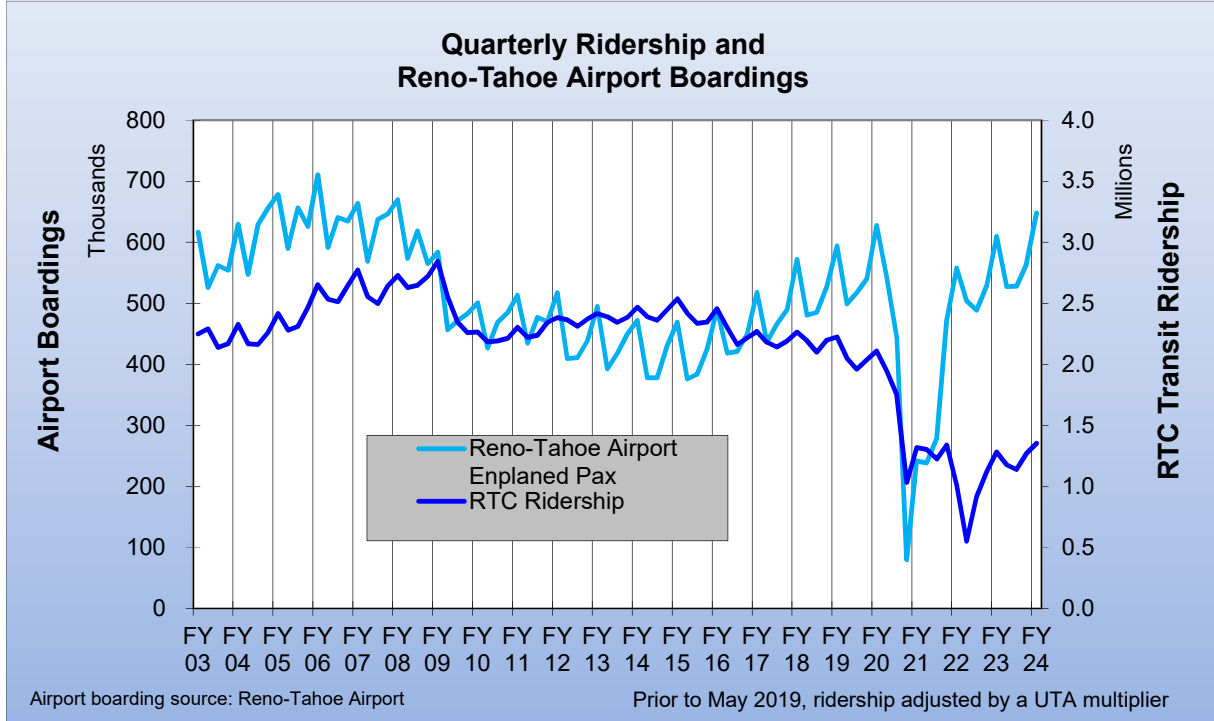
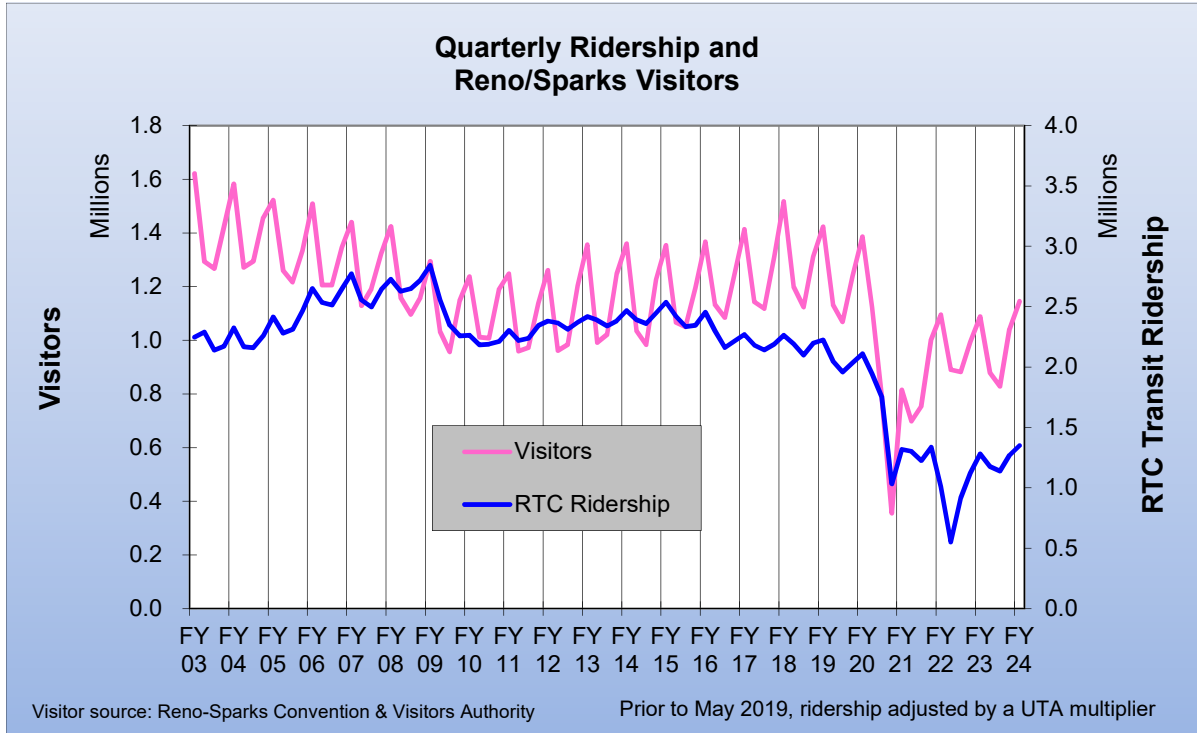
RTC Transit Fixed-Route Bus						
Weighted Average Daily Ridership						
Rolling 12-Month Ridership Comparison						
Most Recent 12 Months			Percent Change	Previous 12 Months		
Month	Year	Ridership		Month	Year	Ridership
Mar	2023	12,981	16%	Mar	2022	11,156
Apr		14,016	23%	Apr		11,395
May		14,008	14%	May		12,245
Jun		14,227	5.3%	Jun		13,514
Jul		14,257	5.5%	Jul		13,510
Aug		14,698	3.1%	Aug		14,259
Sep		15,675	9.7%	Sep		14,286
Oct		15,353	8.4%	Oct		14,157
Nov		14,320	9.4%	Nov		13,086
Dec		13,931	15.6%	Dec		12,049
Jan	2024	14,262	17.1%	Jan	2023	12,184
Feb		15,294	21.0%	Feb		12,638
TOTAL		173,022	12%	TOTAL		154,478



RTC Transit Fixed-Route Bus



RTC Transit Fixed-Route Bus



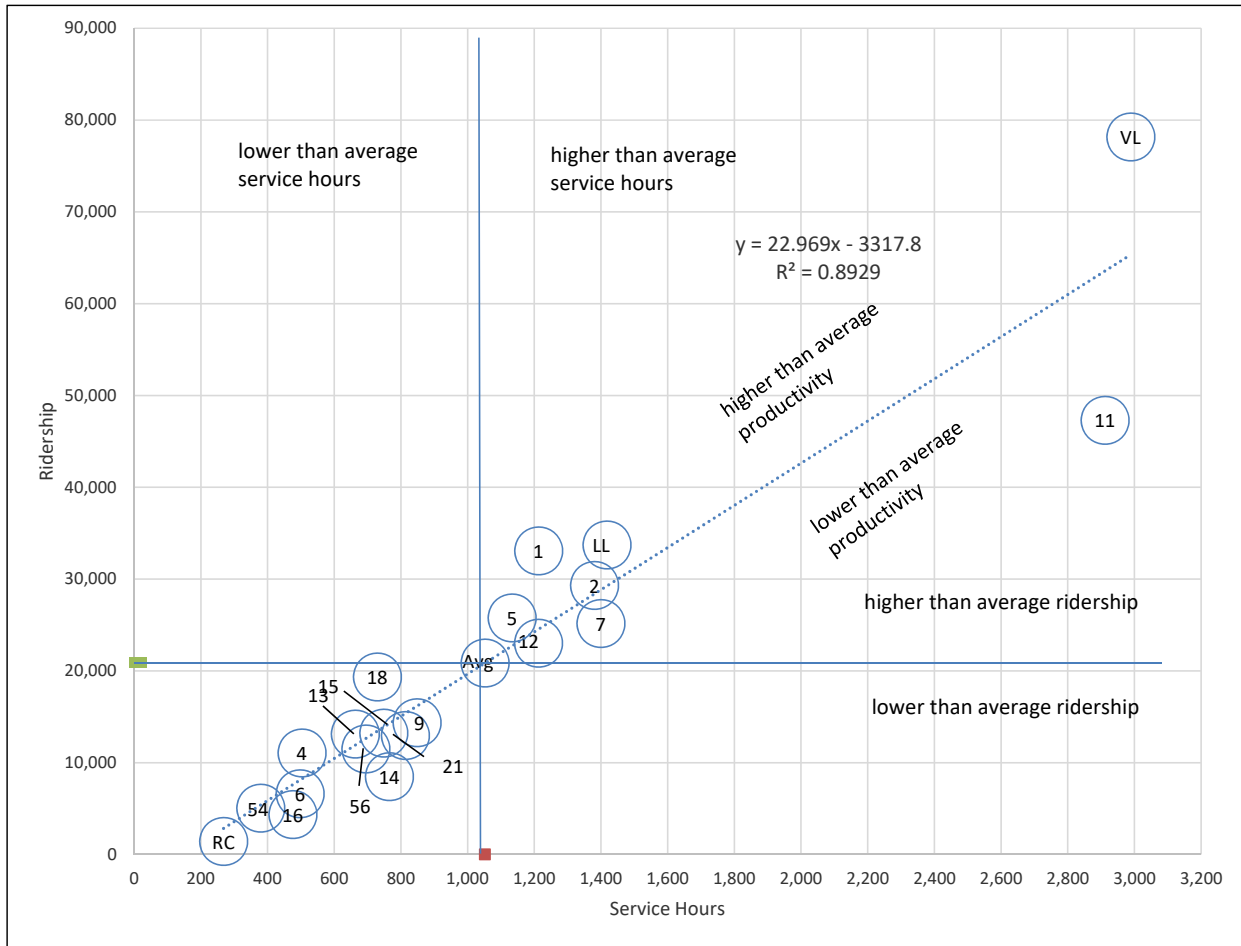
RTC Route Comparison Report

Feb2024

Route *	Productivity	Route	Svs Hours Change Fr. Last Year	Route	Ridership	Route	Ridership Change From Last Year
1	27.3	11	181.0%	RAP VL	78,168	11	77.2%
18	26.5	21	38.4%	11	47,293	21	36.1%
RAP VL	26.2	16	34.6%	RAP LL	33,727	13	32.5%
RAP LL	23.8	14	21.5%	1	33,071	14	31.4%
5	22.7	56	20.2%	2	29,311	56	30.3%
4	22.0	6	11.6%	5	25,777	15	29.3%
2	21.2	TOTAL	4.7%	7	25,165	16	24.7%
TOTAL	19.8	13	4.4%	12	23,016	6	23.3%
13	19.8	15	3.9%	18	19,344	9	20.7%
12	19.0	RTC RC	3.0%	9	14,359	4	19.7%
7	18.0	RAP LL	2.5%	15	13,226	RAP VL	19.1%
15	17.7	4	1.0%	13	13,128	2	16.4%
9	16.9	RAP VL	1.0%	21	12,963	TOTAL	13.5%
56	16.6	5	0.7%	56	11,500	RAP LL	12.5%
11	16.2	2	-0.1%	4	11,064	12	11.0%
21	15.9	12	-2.3%	14	8,482	7	8.2%
6	13.3	7	-6.0%	6	6,614	54	6.2%
54	13.3	18	-6.7%	54	5,046	RTC RC	3.3%
14	11.1	1	-13.5%	16	4,345	5	2.8%
16	9.1	9	-13.9%	RTC RC	1,419	18	1.5%
RTC RC	5.3	54	-17.5%	TOTAL	417,018	1	-2.3%

* - RTC RC is RTC REGIONAL CONNECTOR.

RTC Route Comparison Chart Feb2024



"higher" and "lower" refer to higher or lower than the average of all routes (not the system average)

RTC TRANSIT OPERATING STATISTICS

Feb 2024

Route	Total Ridership	Previous Year	Change	Vehicle Revenue Hours	Previous Year	Change	Rides/VRH	Previous Year	Change
RAPID VL	78,168	65,626	19%	2,989	2,958	1%	26.2	22.2	18%
RAPID LL	33,727	29,980	12%	1,418	1,384	2%	23.8	21.7	10%
1	33,071	33,865	-2%	1,213	1,403	-14%	27.3	24.1	13%
2	29,311	25,174	16%	1,381	1,383	0%	21.2	18.2	17%
3		9,454			502				
4	11,064	9,243	20%	503	498	1%	22.0	18.6	18%
5	25,777	25,083	3%	1,134	1,126	1%	22.7	22.3	2%
6	6,614	5,362	23%	498	446	12%	13.3	12.0	11%
7	25,165	23,255	8%	1,400	1,489	-6%	18.0	15.6	15%
9	14,359	11,897	21%	848	985	-14%	16.9	12.1	40%
11	47,293	26,689	77%	2,911	1,036	181%	16.2	25.8	-37%
12	23,016	20,730	11%	1,213	1,241	-2%	19.0	16.7	14%
13	13,128	9,906	33%	663	635	4%	19.8	15.6	27%
14	8,482	6,455	31%	765	630	21%	11.1	10.2	8%
15	13,226	10,232	29%	749	721	4%	17.7	14.2	24%
16	4,345	3,483	25%	476	354	35%	9.1	9.9	-7%
18	19,344	19,055	2%	729	781	-7%	26.5	24.4	9%
21	12,963	9,522	36%	813	587	38%	15.9	16.2	-2%
26		7,615			650				
54	5,046	4,752	6%	380	460	-17%	13.3	10.3	29%
56	11,500	8,823	30%	695	578	20%	16.6	15.3	8%
RC Carson	1,419	1,374	3%	268	260	3%	5.3	5.3	0%
Misc. Service		0	N/A		0	N/A		0.0	N/A
Feb '24	417,018	367,575	13%	21,044	20,106	5%	19.8	18.3	8.4%
Feb '23	367,575			20,106			18.3		
Perc. Change	13%			5%			8.4%		

RTC TRANSIT OPERATING STATISTICS

Feb 2024

Route	Vehicle Revenue Miles	Rides/VRM	Est. Gross Operating Cost	Est. Cost Per VRH	Est. Cost Per VRM	Est. Cost Per Ride
RAPID VL	27,767	2.82	\$471,816	\$158	\$16.99	\$6.04
RAPID LL	13,656	2.47	\$223,800	\$158	\$16.39	\$6.64
1	11,991	2.76	\$191,499	\$158	\$15.97	\$5.79
2	14,454	2.03	\$217,949	\$158	\$15.08	\$7.44
3						
4	6,522	1.70	\$79,460	\$158	\$12.18	\$7.18
5	15,140	1.70	\$178,940	\$158	\$11.82	\$6.94
6	4,610	1.43	\$78,555	\$158	\$17.04	\$11.88
7	24,729	1.02	\$220,968	\$158	\$8.94	\$8.78
9	9,545	1.50	\$133,929	\$158	\$14.03	\$9.33
11	28,444	1.66	\$459,608	\$158	\$16.16	\$9.72
12	12,330	1.87	\$191,438	\$158	\$15.53	\$8.32
13	6,015	2.18	\$104,685	\$158	\$17.40	\$7.97
14	7,376	1.15	\$120,820	\$158	\$16.38	\$14.24
15	7,705	1.72	\$118,168	\$158	\$15.34	\$8.93
16	3,301	1.32	\$75,104	\$158	\$22.75	\$17.29
18	7,923	2.44	\$115,085	\$158	\$14.53	\$5.95
21	8,898	1.46	\$128,382	\$158	\$14.43	\$9.90
26						
54	6,095	0.83	\$59,932	\$158	\$9.83	\$11.88
56	10,239	1.12	\$109,689	\$158	\$10.71	\$9.54
RC Carson	8,054	0.18	\$42,307	\$158	\$5.25	\$29.81
Misc. Service						
Feb '24	234,793	1.78	\$3,322,133	\$158	\$14.15	\$7.97
Feb '23	213,791	1.72	\$2,966,248	\$148	\$13.87	\$8.07
Perc. Change	10%	3.3%	12%	7.0%	2.0%	-1%

RTC Transit Operating Statistics

March '23 - Feb '24

Route	Total Ridership	Previous Year	Change	Vehicle Revenue Hours	Previous Year	Change	Rides/VRH	Previous Year	Change
RAPID VL	946,514	754,529	25%	37,277	36,848	1%	25.4	20.5	24%
RAPID LL	448,527	358,886	25%	17,746	18,380	-3%	25.3	19.5	29%
1	422,456	462,493	-9%	15,917	17,571	-9%	26.5	26.3	1%
2	367,969	320,979	15%	17,265	16,205	7%	21.3	19.8	8%
2s									
3	22,924	137,032		1,187	6,255				
3CC									
4	142,809	123,179	16%	6,412	6,259	2%	22.3	19.7	13%
5	335,302	280,094	20%	14,225	12,905	10%	23.6	21.7	9%
6	80,030	73,052	10%	6,154	5,595	10%	13.0	13.1	0%
7	324,160	305,859	6%	18,357	18,474	-1%	17.7	16.6	7%
9	171,155	116,274	47%	11,087	11,482	-3%	15.4	10.1	52%
11	487,482	377,336	29%	26,700	12,836	108%	18.3	29.4	-38%
12	284,961	254,420	12%	14,009	14,676	-5%	20.3	17.3	17%
13	149,643	126,187	19%	8,155	7,424	10%	18.3	17.0	8%
14	101,251	93,574	8%	9,334	7,667	22%	10.8	12.2	-11%
15	159,630	152,865	4%	9,313	9,338	0%	17.1	16.4	5%
16	52,748	52,602	0%	5,707	4,403	30%	9.2	11.9	-23%
18	253,455	251,219	1%	9,332	9,481	-2%	27.2	26.5	2%
19									
21	159,125	119,755	33%	9,582	6,909	39%	16.6	17.3	-4%
26	19,237	102,386	-81%	1,571	7,370	-79%	12.2	13.9	-12%
54	67,855	67,374	1%	4,996	5,646	-12%	13.6	11.9	14%
56	135,931	112,258	21%	7,870	7,009	12%	17.3	16.0	8%
RC Carson	19,936	16,995	17%	3,327	3,399	-2%	6.0	5.0	20%
Misc. Service									
Current 12 Months	5,153,100	4,659,348	11%	255,523	246,133	4%	20.2	18.9	6.5%
Previous 12 Months	4,659,348			246,133			18.9		
Perc. Change	11%			4%			6.5%		

RTC Transit Operating Statistics

March '23 - Feb '2

Route	Vehicle Revenue Miles (thousand)	Rides/VRM	Est. Gross Operating Cost (thousand)	Est. Cost Per VRH	Est. Cost Per VRM	Est. Cost Per Ride
RAPID VL	346.0	2.74	\$5,752	\$154	\$16.62	\$6.08
RAPID LL	171.4	2.62	\$2,739	\$154	\$15.98	\$6.11
1	152.0	2.78	\$2,454	\$154	\$16.14	\$5.81
2	179.2	2.05	\$2,664	\$154	\$14.87	\$7.24
2s						
3	14.1		\$175			
3CC						
4	82.0	1.74	\$990	\$154	\$12.08	\$6.93
5	198.1	1.69	\$2,196	\$154	\$11.08	\$6.55
6	57.6	1.39	\$951	\$155	\$16.50	\$11.88
7	310.2	1.05	\$2,831	\$154	\$9.13	\$8.73
9	120.0	1.43	\$1,709	\$154	\$14.24	\$9.98
11	293.6	1.66	\$4,154	\$156	\$14.15	\$8.52
12	154.7	1.84	\$2,163	\$154	\$13.98	\$7.59
13	74.5	2.01	\$1,259	\$154	\$16.90	\$8.41
14	90.7	1.12	\$1,443	\$155	\$15.91	\$14.25
15	96.5	1.65	\$1,438	\$154	\$14.89	\$9.01
16	37.8	1.40	\$883	\$155	\$23.39	\$16.74
18	98.9	2.56	\$1,439	\$154	\$14.55	\$5.68
19						
21	105.5	1.51	\$1,482	\$155	\$14.05	\$9.32
26	16.5	1.17	\$232	\$148	\$14.07	\$12.04
54	76.3	0.89	\$770	\$154	\$10.09	\$11.34
56	114.0	1.19	\$1,217	\$155	\$10.67	\$8.95
RC Carson	100.2	0.20	\$513	\$154	\$5.12	\$25.74
Misc. Service						
Current 12 Months	2,889.8	1.78	\$39,454	\$154	\$13.65	\$7.66
Previous 12 Months	2,635.6	1.77	\$35,768	\$145	\$13.57	\$7.68
Perc. Change	10%	0.9%	10%	6.3%	0.6%	-0.3%

February

March 2023 - Feb 2024

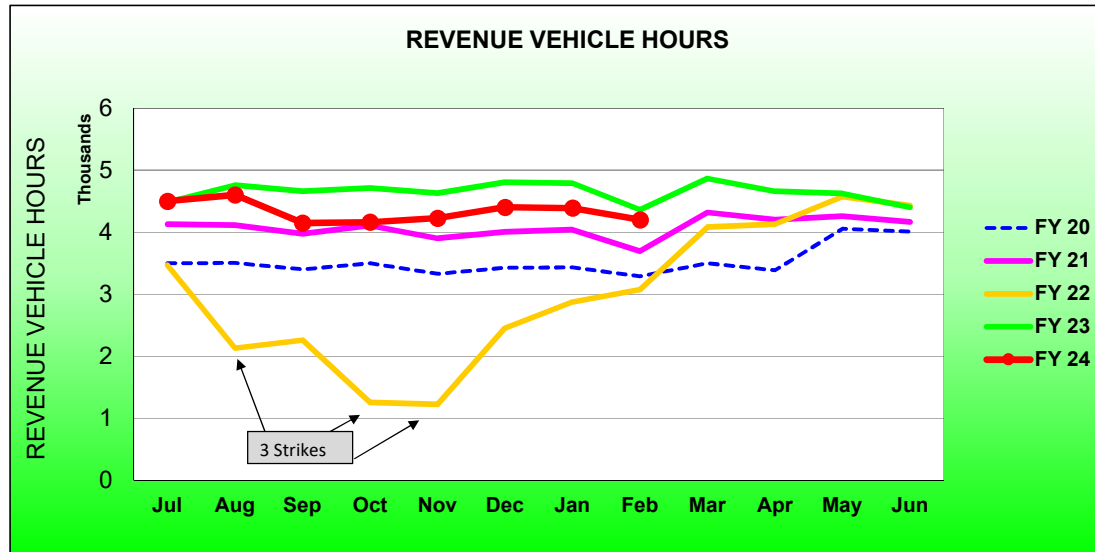
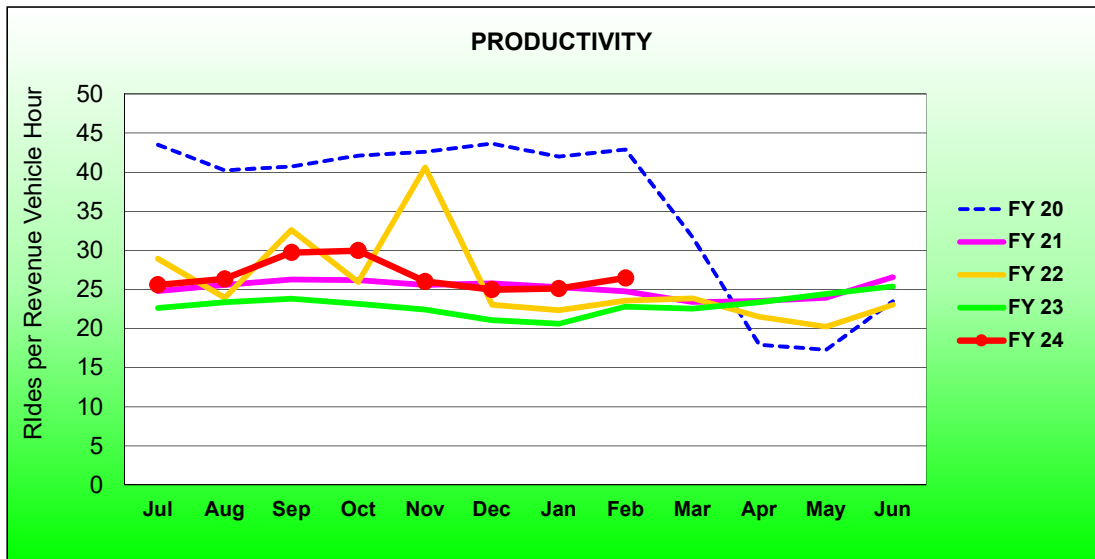
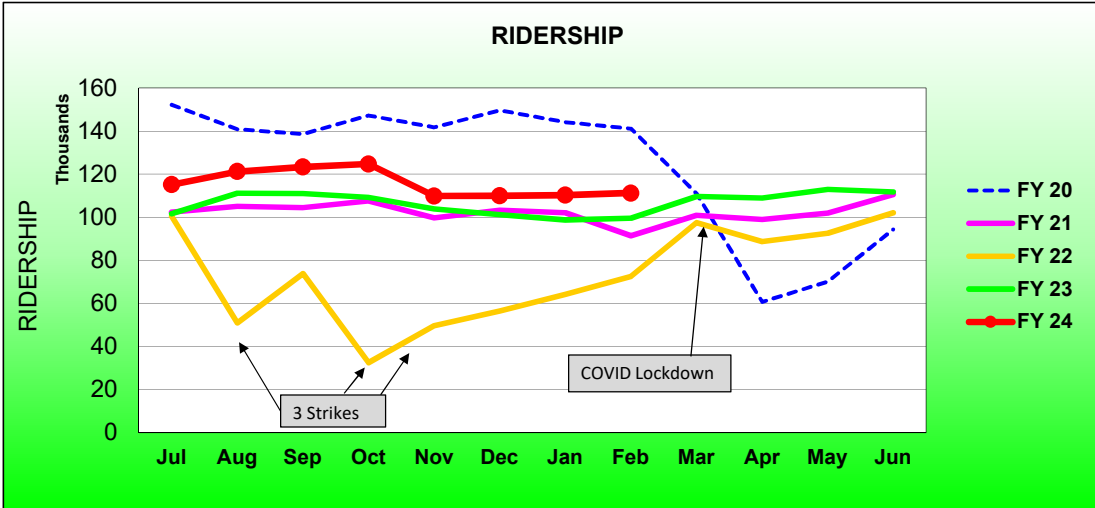
	2024	2023	Percent Change	Current 12 Months	Previous 12 Month	Percent Change
Single Ride Cash						
Full Fare	3,914	4,690	-17%	59,772	69,312	-14%
Reduced*	5,858	6,995	-16%	85,279	104,482	-18%
RTC ACCESS ID	400	329	21.6%	4,098	5,103	-20%
Total	10,172	12,014	-15%	149,149	178,897	-17%
Day Pass Cash						
Full Fare	51,513	56,242	-8%	686,391	776,842	-11.6%
Reduced*	63,869	64,330	-0.7%	829,794	896,684	-7.5%
Total	115,382	120,572	-4.3%	1,516,185	1,673,526	-9.4%
Pre-Purchase Period Pass						
Full Fare	109,841	86,881	26%	1,300,767	1,039,313	25%
Reduced*	132,677	107,845	23%	1,581,813	1,275,507	24%
Total	242,518	194,726	25%	2,882,580	2,314,820	25%
Transfers	137	712	-81%	1,926	2,688	-28%
Flow Through	4,009	4,026	0%	62,442	58,904	6%
Free Rides	22,004	19,847	11%	313,317	254,976	23%
U/Ed-Pass Free Rides	19,597	12,663	55%	190,736	137,118	39%
Stored Ride Pass	3,199	3,015	6.1%	36,759	38,419	-4.3%
Full Fare	178,232	160,049	11.4%	2,231,707	2,043,627	9%
Reduced*	238,627	207,400	15%	2,919,972	2,614,176	12%
Total Ridership	417,018	367,575	13.5%	5,153,100	4,659,348	11%
Previous 12 Months	367,575			4,659,348		
Change	13.5%			11%		
Vehicle Revenue Hours	21,044	20,106	5.0%	255,523	246,133	4%
Previous 12 Months	20,106			246,133		
Change	5.0%			4%		
Rides / VRH	19.8	18.3	8.4%	20.2	18.9	6.7%
Previous 12 Months	18.3			18.9		
Change	8%			6.7%		
Vehicle Revenue Miles	234,793	213,791	10.0%	2,889,800	2,635,600	10%
Rides / VRM	1.78	1.72	3.3%	1.78	1.77	0.6%
Est. Gross Operating Cost	\$3,322,133	\$2,966,248	12.0%	\$39,454,000	\$35,768,000	10%
Est. Cost Per VRH	\$157.86	\$147.53	7.0%	\$154.40	\$145.00	6.5%
Est. Cost Per VRM	\$14.15	\$13.87	2.0%	\$13.65	\$13.57	0.6%
Est. Cost Per Ride	\$7.97	\$8.07	-1.0%	\$7.66	\$7.68	-0.3%

* - Reduced fare includes Youth, Senior, Disabled, and US Veterans

RTC RAPID Virginia Line and Route 1						
ROLLING 12-MONTH COMPARISON						
Most Recent 12 Months			Percent Change	Previous 12 Months		
Month	Year	Ridership		Month	Year	Ridership
Mar		109,639	12%	Mar		97,524
Apr		108,968	23%	Apr		88,653
May		112,931	22%	May		92,578
Jun		111,746	10%	Jun		102,048
Jul		115,149	13%	Jul		101,575
Aug		121,197	9.1%	Aug		111,109
Sep		123,298	11%	Sep		111,004
Oct		124,715	14%	Oct		109,180
Nov		109,893	5.8%	Nov		103,868
Dec		109,966	8.6%	Dec		101,252
Jan	2024	110,229	11.6%	Jan	2023	98,740
Feb		111,239	11.8%	Feb		99,491
TOTAL		1,368,970	12%	TOTAL		1,217,022

* - Strikes occurred Aug 3-13, Sep 27-Oct 20, Nov 9-Dec 3, 2021

RTC RAPID Virginia Line and Route 1 Fiscal Year Comparisons



RTC RAPID Lincoln Line and Route 11						
Rolling 12-Month Comparison						
Most Recent 12 Months			Percent Change	Previous 12 Months		
Month	Year	Ridership		Month	Year	Ridership
Mar		64,370	21%	Mar		53,282
Apr		63,439	14%	Apr		55,689
May		74,197	25%	May		59,313
Jun		76,479	19%	Jun		64,189
Jul		81,268	27%	Jul		64,207
Aug		85,588	26%	Aug		67,878
Sep		86,016	24%	Sep		69,592
Oct		86,638	30%	Oct		66,800
Nov		76,791	32%	Nov		58,346
Dec		77,855	30%	Dec		59,985
Jan	2024	82,348	37%	Jan	2023	60,272
Feb		81,020	43%	Feb		56,669
TOTAL		936,009	27%	TOTAL		736,222

RTC Transit Operating Statistics

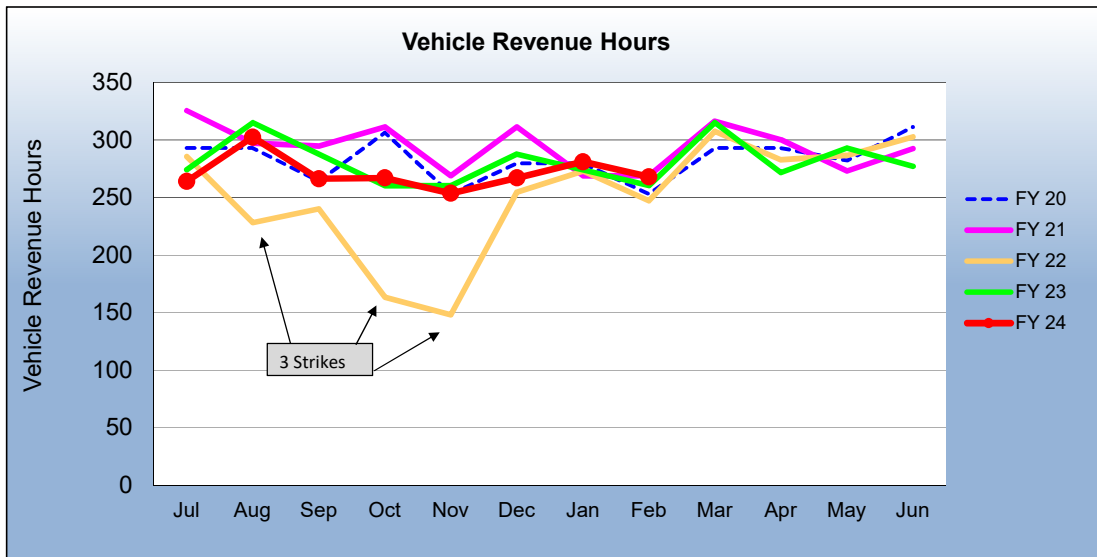
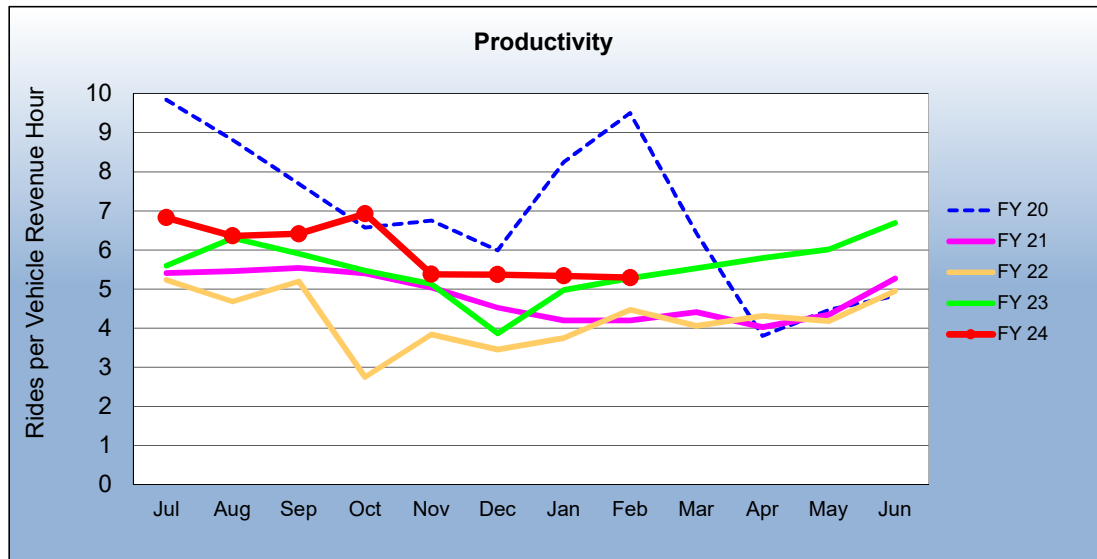
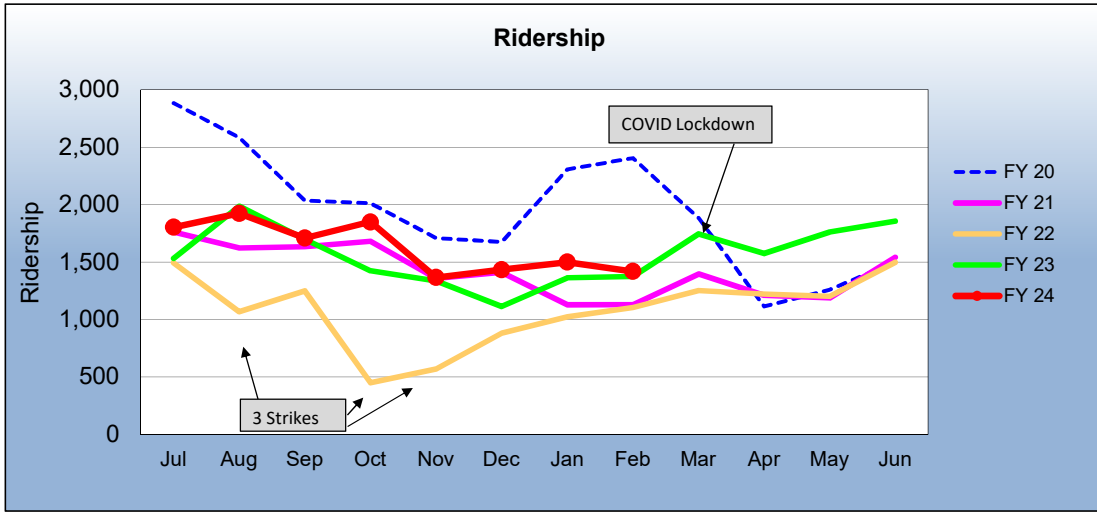
RTC RAPID Virginia & Lincoln Lines						
ROLLING 12-MONTH COMPARISON						
Most Recent 12 Months			Percent Change	Previous 12 Months		
Month	Year	Ridership		Month	Year	Ridership
Mar		105,699	43%	Mar		73,692
Apr		105,548	44%	Apr		73,521
May		116,256	40%	May		82,872
Jun		116,866	26%	Jun		92,419
Jul		120,564	27%	Jul		94,642
Aug		128,312	22%	Aug		104,983
Sep		127,255	20%	Sep		105,807
Oct		127,380	25%	Oct		101,939
Nov		111,741	14%	Nov		98,227
Dec		112,141	18%	Dec		94,884
Jan	2024	111,384	17%	Jan	2023	94,823
Feb		111,895	17%	Feb		95,606
TOTAL		1,395,041	25%	TOTAL		1,113,415

* - Strikes occurred Aug 3-13, Sep 27-Oct 20, Nov 9-Dec 3, 2021

RTC REGIONAL CONNECTOR - Carson Line						
Rolling 12 Month Comparison						
Most Recent 12 Months			Percent Change	Previous 12 Months		
Month	Year	Ridership		Month	Year	Ridership
Mar		1,743	39%	Mar		1,250
Apr		1,575	29%	Apr		1,220
May		1,762	47%	May		1,200
Jun		1,855	24%	Jun		1,499
Jul		1,802	17%	Jul		1,534
Aug		1,924	-3.1%	Aug		1,985
Sep		1,708	0.6%	Sep		1,697
Oct		1,849	30%	Oct		1,424
Nov		1,365	2.2%	Nov		1,335
Dec		1,434	28.8%	Dec		1,113
Jan	2024	1,500	10.0%	Jan	2023	1,364
Feb		1,419	10.0%	Feb		1,374
TOTAL		19,936	17%	TOTAL		16,995

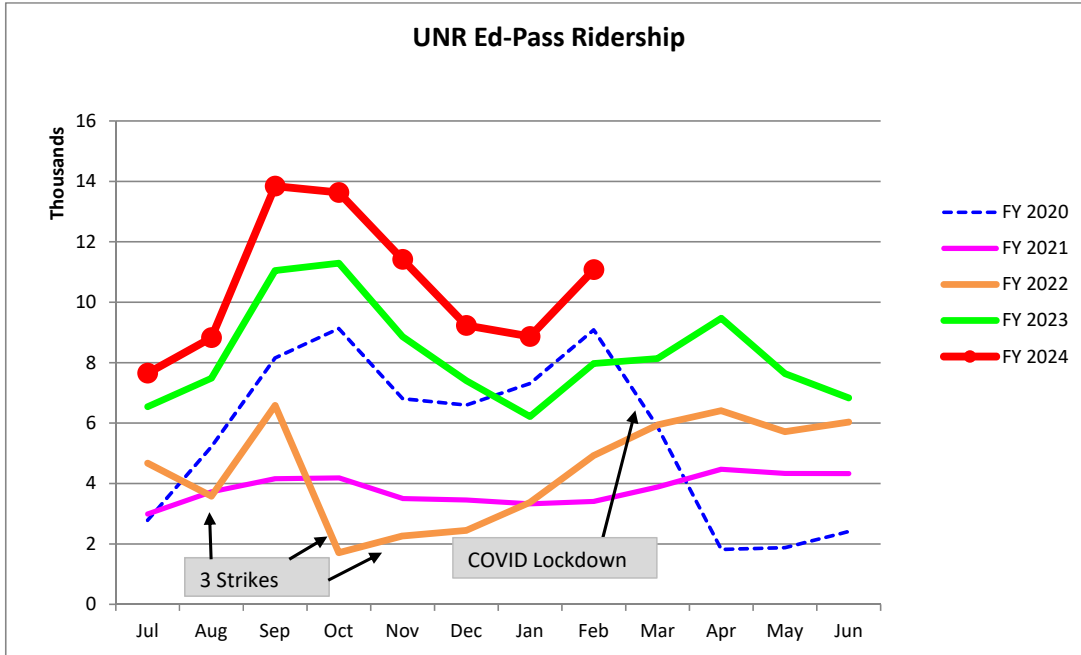
* - Strikes occurred Aug 3-13, Sep 27-Oct 20, Nov 9-Dec 3, 2021

RTC REGIONAL CONNECTOR Carson Line Fiscal Year Comparisons



**RTC Transit Fixed Route Bus Ridership Report
University of Nevada, Reno Ed-Pass Program
FY 2024**

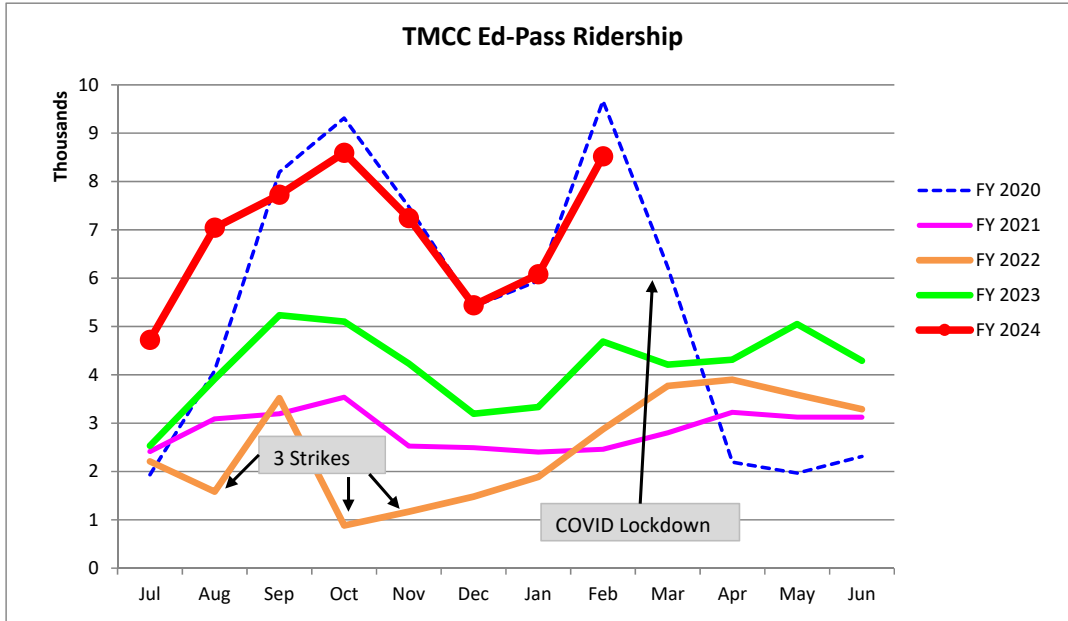
Category	Jul	Aug	Sep	Oct	Nov	Dec	Jan	Feb	Mar	Apr	May	Jun	FYTD
FY 2020	2,779	5,218	8,159	9,127	6,808	6,592	7,312	9,084	5,873	1,818	1,877	2,410	67,057
FY 2021	2,991	3,723	4,156	4,185	3,502	3,455	3,329	3,409	3,881	4,471	4,333	4,330	45,765
FY 2022	4,670	3,581	6,584	1,710	2,264	2,447	3,376	4,924	5,936	6,410	5,716	6,033	53,651
FY 2023	6,539	7,482	11,046	11,291	8,857	7,399	6,215	7,973	8,138	9,470	7,640	6,833	98,883
Percent Change	17%	18%	25%	21%	29%	25%	43%	39%					
FY 2024	7,650	8,824	13,841	13,631	11,414	9,231	8,864	11,077					84,532



Fiscal Year	Rides
FY 2003	51,228
FY 2004	55,114
FY 2005	69,685
FY 2006	88,070
FY 2007	85,295
FY 2008	86,461
FY 2009	88,385
FY 2010	79,518
FY 2011	75,925
FY 2012	75,300
FY 2013	50,438
FY 2014	40,854
FY 2015	41,778
FY 2016	50,022
FY 2017	40,581
FY 2018	34,154
FY 2019	30,251
U-Pass:	
FY 2020	67,057
FY 2021	45,765
FY 2022	53,651
FY 2023	98,883

**RTC Transit Fixed Route Bus Ridership Report
Truckee Meadows Community Ed-Pass Program
FY 2024**

Category	Jul	Aug	Sep	Oct	Nov	Dec	Jan	Feb	Mar	Apr	May	Jun	FYTD
FY 2020	1,933	4,086	8,193	9,311	7,479	5,413	5,945	9,668	6,227	2,193	1,968	2,310	64,726
FY 2021	2,414	3,090	3,194	3,535	2,527	2,493	2,402	2,459	2,800	3,225	3,126	3,124	34,389
FY 2022	2,208	1,584	3,516	883	1,170	1,480	1,886	2,875	3,773	3,899	3,585	3,287	30,146
FY 2023	2,533	3,913	5,233	5,103	4,231	3,195	3,335	4,690	4,213	4,314	5,051	4,292	50,103
Percent Change	87%	80%	48%	68%	71%	70%	82%	82%					
FY 2024	4,725	7,045	7,727	8,596	7,244	5,440	6,081	8,520					



Fiscal Year	Rides
FY 2013	90,583
FY 2014	113,700
FY 2015	94,112
FY 2016	83,375
FY 2017	66,110
FY 2018	53,027
FY 2019	37,191

Ed-Pass:	Rides
FY 2020	64,726
FY 2021	34,389
FY 2022	30,146
FY 2023	50,103