



# REGIONAL TRANSPORTATION COMMISSION OF WASHOE COUNTY

## REGIONAL ROAD IMPACT FEE TECHNICAL ADVISORY COMMITTEE

### MEETING AGENDA

**THURSDAY, APRIL 25, 2024, 8:30 a.m.  
MEETING TO BE HELD VIA ZOOM ONLY**

---

I. This meeting will be held via Zoom in accordance with Assembly Bill 253 (2021). There will be no physical location. For those requiring hearing or speech assistance, contact Relay Nevada at 1-800-326-6868 (TTY, VCO or HCO).

II. The committee may combine two or more agenda items for consideration and/or may remove an item from the agenda or delay discussion relating to an item on the agenda at any time.

III. Members of the public may attend the meeting via Zoom by registering at <https://us02web.zoom.us/j/81173196317?pwd=SExJUTZDREdJdnNka3B5MzVoUEF3QT09>. Registered persons will receive an email from Zoom with a link to the meeting and instructions on how to join the meeting. Registered persons should follow the instructions from Zoom to join the meeting. Registered persons can participate by telephone or video via Zoom. To provide public comment during the meeting via Zoom, please make sure your computer or device has a working microphone. Use the "Chat" feature to submit a request to make a comment. When the time comes to make public comments, you will be invited to speak. If you cannot register via Zoom but want to attend the meeting via telephone, please call 1-253-205-0468 (WEBINAR id 811 7319 6317; webinar passcode 626127) on the day of the meeting. If you wish to provide public comment during the meeting, please contact Agency Services at (775) 348-0171 prior to 4:00 p.m. on the day before the meeting and provide the telephone number you will be calling from as well as the item(s) you would like to comment on. When the time comes to make public comments, you will be invited to speak.

IV. Public comment is limited to three minutes per person.

V. Members of the public may also provide public comment in advance of the meeting by emailing comments to: [rtcpubliccomments@rtcwashoe.com](mailto:rtcpubliccomments@rtcwashoe.com). Comments received prior to 4:00 p.m. on the day before the meeting will be forwarded to members of the committee and included in the minutes of the meeting.

VI. The supporting materials for the meeting can be found at [www.rtcwashoe.com](http://www.rtcwashoe.com). If you need to request a copy of the supporting materials, please contact Agency Services by phone at (775) 348-0171 or by email at [agencyervices@rtcwashoe.com](mailto:agencyervices@rtcwashoe.com).

VII. RTC staff will make reasonable efforts to assist and accommodate individuals with disabilities. Please contact Agency Services at (775) 348-0171 in advance so that arrangements can be made.

---

#### **1. ROLL CALL/CALL TO ORDER**

#### **2. VERBAL INSTRUCTIONS REQUIRED BY ASSEMBLY Bill 219 (2023):** RTC staff will read the following before the first public comment period:

*If you are participating via Zoom, to provide public comment during the meeting please make sure your computer or device has a working microphone. Use the "Chat" feature to submit a request to make a comment. When the time comes to make public comments, you will be invited to speak.*

*If you are participating by telephone, to provide public comment you should have contacted RTC Agency Services prior to 4:00 p.m. yesterday and provided the telephone number you would be calling from as well as the item (s) you wanted to comment on. When the time comes to make public comments, you will be invited to speak.*

**3. PUBLIC COMMENT**

*Please read Paragraph III.*

**4. CONSENT ITEMS**

*Minutes*

4.1 Approval of the December 20, 2023, Meeting Minutes (*For Possible Action*)

**5. DISCUSSION ITEMS AND PRESENTATIONS**

5.1 RTC staff report summarizing the updated list of RRIF TAC Members. (*No Action*)

5.2 RTC staff presentation on the Regional Transportation Plan (RTP) Update (*No Action*)

5.3 RTC staff presentation on plans to review and update the RRIF General Administrative Manual (GAM) and RRIF Capital Improvement Plan (RRIF CIP) following the 2050 Regional Transportation Plan (RTP) Update (*No Action*)

**6. MEMBER ANNOUNCEMENTS AND UPDATES**

*Announcements and updates to include requests for information or topics for future agendas. No discussion will take place on this item.*

**7. PUBLIC COMMENT**

*Please read paragraph III.*

**8. ADJOURNMENT**

---

Posting locations: RTC, 1105 Terminal Way, Reno, NV; RTC website: [www.rtcwashoe.com](http://www.rtcwashoe.com); State Website: <https://notice.nv.gov/>

**REGIONAL TRANSPORTATION COMMISSION (RTC)  
REGIONAL ROAD IMPACT FEE (RRIF)  
TECHNICAL ADVISORY COMMITTEE (TAC)**

**Meeting Minutes**

**Wednesday, December 20, 2023**

**Members Present**

Angela Fuss, City of Reno  
Dale Keller, Regional Transportation Commission  
Jim Rundle, City of Sparks  
John Krmpotic, Private Sector  
Jon Ericson, City of Sparks  
Kraig Knudsen, Private Sector  
Mike Mischel, City of Reno  
Manny Becerra, City of Reno  
Shelley Read, City of Sparks  
Xuan Wang, Regional Transportation Commission

**Members Absent**

Alex Velto, City of Reno  
Dwayne Smith, Washoe County  
Larry Chesney, Washoe County  
Mitchell Fink, Washoe County  
Randy Walter, Private Sector  
Ted Erkan, Private Sector

**RTC Staff**

Alex Wolfson  
Hannah Yue  
Jelena Williams  
Yeni Russo

Christian Schonlau  
Jeff Wilbrecht  
Josh MacEachern

### **Item 1: Call to Order**

The meeting was conducted via Zoom Webinar and was called to order at 8:31 a.m. Roll call was taken to ensure there was a quorum.

### **Item 2: Verbal Instructions Required by Assembly Bill 219 (2023)**

The verbal instructions were read by the committee Chair, Jeff Wilbrecht.

### **Item 3: Public Comment**

There were no public comments received.

### **Item 4: Approval of Agenda**

The agenda was approved as presented.

### **Item 5.1: Approval of the October 27, 2022, Meeting Minutes**

The October 27, 2022, Meeting Minutes were approved as presented.

### **Item 6.1: Year 2 Indexing of the 7<sup>th</sup> Edition RRIF General Administrative Manual (GAM) and the RRIF Capital Improvement Plan (CIP)**

Jeff Wilbrecht, with the RTC Engineering Department, presented the staff report and provided brief information on the Year 2 Indexing of the 7<sup>th</sup> Edition RRIF GAM and CIP. He explained that the inflationary adjustment increase, authorized through NRS 278B.225, will go into effect January 31, 2024.

### **Item 6.2: Acknowledge receipt of a report on the 2050 Regional Transportation Plan (RTP) Update**

Xuan Wang, with the RTC Planning Department, gave a presentation on the 2050 RTP Update (see Item 6.2, Attachment A). The presentation provided a summary of the Plan's Purpose, Process, Basic Requirements, Public and Agency Outreach Approaches, and Schedule. The current RTP was adopted in March 2021. Federal regulations require that the plan is updated every four years. The schedule for the RTP update process allows for federal review and approval of the plan by March 2025.

Jon Ericson, with the City of Sparks, requested the Pyramid Lake Paiute Tribe be included in the RTP's Agency Working Group meetings.

**Item 6.3: Discussion regarding the RRIF GAM and RRIF CIP Update following the 2050 RTP Update**

Jeff Wilbrecht, with the RTC Engineering Department, opened discussion for this item.

Dale Keller, with the RTC Engineering Department, stated the RTP is an important document to the RRIF TAC as it assists in determining the projects that will be eligible for waivers and projects that can be funded with impact fees.

Staff would like to keep the committee members apprised and receive their input by meeting regularly as the RTP update process progresses to approval. Following adoption in 2025, the RTC anticipates evaluating and recommending projects for consideration in the RRIF CIP.

**Item 6.4: Acknowledge receipt of an update on the RRIF TAC Statement of Purpose, Objectives, and Procedures**

Jeff Wilbrecht, with the RTC Engineering Department, provided the committee an amended, "Statement of Purpose, Objectives, and Procedures" (see Item 6.4, Attachment A). The committee approved the update to a virtual meeting format.

It was requested a current committee member roster be provided to the members at a future meeting.

**Item 7: Member Items**

There were no member items.

**Item 8: Public Comment**

There were no public comments received.

**Item 9: Adjournment**

The meeting was adjourned at 9:03 a.m.

Respectfully Submitted,

Yeni Russo

DRAFT



**REGIONAL TRANSPORTATION COMMISSION**

*Metropolitan Planning • Public Transportation & Operations • Engineering & Construction*

Metropolitan Planning Organization of Washoe County, Nevada

**Regional Transportation Plan Update**  
December, 2023





## Purpose of RTP:

- Identify the transportation guiding principles & goals
- Identify transportation investments through 2050
- Community-based process

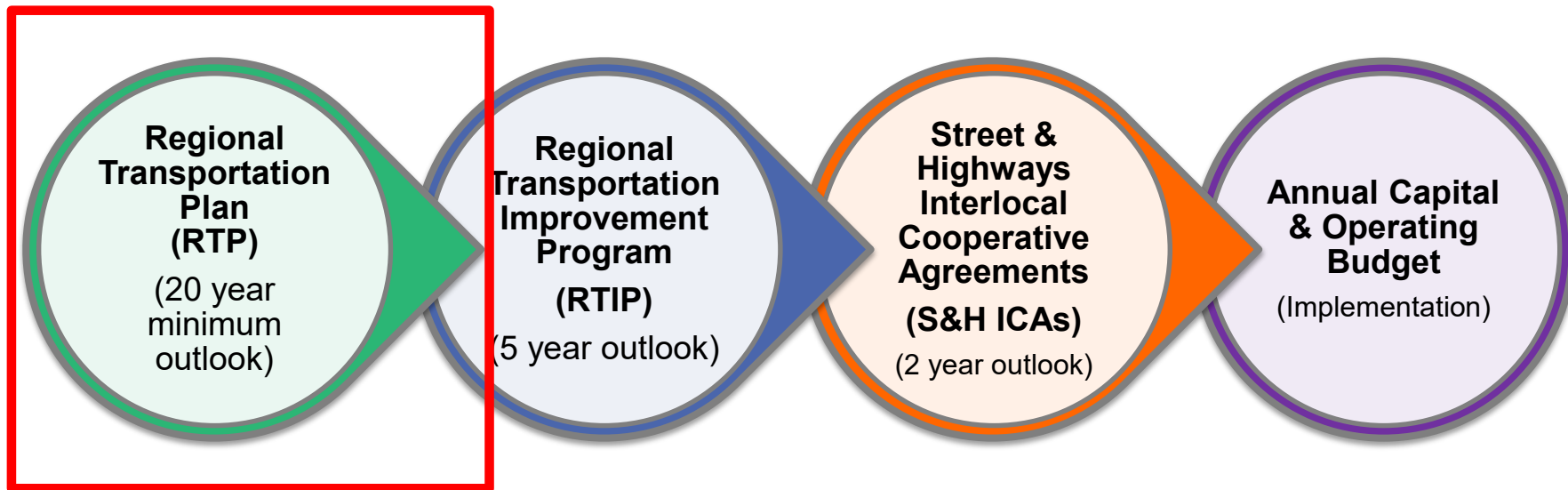
## Plan completion by March 2025

- Draft for review in Fall 2024





# RTP Process





# RTP – Basic Requirements

- Identification of Transportation Facilities
- Performance Measures and Targets
- System Performance Report
- Mitigation Activities
- Financial Plan
- Operational and Management Strategies
- Capital Investment and Other Strategies
- Transportation and Transit Enhancement Activities



# RTP – Public and Agency Outreach Approaches

- Bi-monthly updates to RTC Board & TAC/CMAC
- Agency Working Group meetings
  - FHWA, FTA, EPA, City of Sparks, City of Reno, Washoe County, NDOT, Reno-Sparks Indian Colony, TMRPA, Northern Nevada Public Health, Washoe County School District, Reno-Tahoe Airport Authority
- Senior Staff Meetings with Reno, Sparks, Washoe
- Inter-County Transportation Working Group
- Air quality interagency consultation group meetings
  - FHWA, FTA, EPA, NDEP, TMRPA, Northern Nevada Public Health, NDOT
- Community Planning Workshops
- Social Media/Traditional Media





THANK YOU

**Xuan Wang**  
**Senior Technical Planner**

Regional Transportation  
Commission of Washoe County

[xwang@rtcwashoe.com](mailto:xwang@rtcwashoe.com)  
775 332 9521

Building A Better Community Through Quality Transportation  
[rtcwashoe.com](http://rtcwashoe.com)



**REGIONAL ROAD IMPACT FEE (RRIF)  
TECHNICAL ADVISORY COMMITTEE (TAC)**

**STATEMENT OF PURPOSE, OBJECTIVES, AND PROCEDURES**

**I. BACKGROUND**

The RRIF program was implemented in November 1995 which included the preparation of a “Capital Improvements Plan” (CIP) as required by the Nevada impact fee statute, NRS 278B, Impact Fees for New Development. With the preparation of the RRIF CIP and its companion, RRIF General Administrative Manual (GAM), the RRIF program was adopted and is jointly administered by the RTC, the City of Reno, the City of Sparks and Washoe County, within the framework of an Interlocal Cooperative Agreement as authorized by the state Interlocal Cooperative Act.

The RRIF Program is reviewed biennially, as required in the Interlocal Cooperative Agreement and NRS. During the review, updated population and employment assumptions provided by the Truckee Meadows Regional Planning Agency (TMRPA) are included in the RTC Traffic Forecast Model. An updated capital improvement plan is developed by comparing the new future volumes against the existing roadway system capacity. Average project costs are used to determine the net cost per service unit resulting in the recalculated impact fee rates.

Impact fees are collected by the local agencies prior to the issuance of a building permit. The fees are determined by the local RRIF Administrator based on a fee schedule. Regional road impact fees are transferred from the local governments to the RTC on a quarterly basis. The monies are then expended for projects selected and approved by the RTC Board and local governmental agencies.

**II. STATEMENT OF PURPOSE**

The purpose of the RRIF TAC is to review and recommend any modifications, additions, or updates to be made to the RRIF General Administration Manual (GAM) and Capital Improvements Plan (CIP). The RRIF TAC is also part of the appeal process as outlined in the RRIF GAM. The RRIF GAM states that a fee payer or applicant affected by an administrative decision of the RTC RRIF Administrator or Local Administrator may appeal such decision to the RTC Regional Road Impact Fee Technical Advisory Committee.

**III. OBJECTIVES**

1. Provide review and comment on any modifications, additions, or updates to be made to the RRIF General Administration Manual (GAM) and Capital Improvements Plan (CIP).
2. To affirm or reverse the decision of the RTC RRIF Administrator or Local RRIF Administrator on an appeal of an administrative decision. To affirm or reverse a decision, there must be a motion with a vote. The simple majority of those present approves or fails the motion. A tie means the motion fails.

**IV. PROCEDURES**

1. RRIF TAC meetings will be scheduled monthly during the update process, although they can be held on an as-needed basis such as when an appeal is to be heard. The regular meetings shall be held at the RTC Engineering Facility **conducted via virtual meeting** at 8:30 a.m. on the fourth Thursday of each month, **although meeting times may be adjusted to meet the schedules of the RRIF TAC members.**

2. The RRIF TAC consists of 15 members with 8 members constituting a quorum. Technical Advisory Committee membership is comprised of the following individuals or their designated representatives:
  - RTC RRIF Administrator (1)
  - From the Cities of Reno and Sparks and Washoe County (9)
    - Community Development Directors (3)
    - Public Works Directors (3)
    - Planning Commission Members (3)
  - One RTC staff member appointed by the Executive Director of the RTC (1)
  - Four private sector members appointed by the Chairman of the RTC (4)
3. The RTC RRIF Administrator shall chair the RRIF TAC.
4. RTC will provide secretarial and staff support to the Committee.
5. Agendas and supporting materials will be e-mailed or delivered monthly to Committee members no later than the Friday before each meeting.
6. RTC will create meeting minutes to be sent out after each meeting.

Updated December 20, 2023, JW



**REGIONAL TRANSPORTATION COMMISSION**

*Metropolitan Planning • Public Transportation & Operations • Engineering & Construction*

Metropolitan Planning Organization of Washoe County, Nevada

**MEETING DATE:** April 25, 2024

**AGENDA ITEM 5.1**

To: Regional Road Impact Fee Technical Advisory Committee (RRIF TAC)

From: Jeff Wilbrecht, P.E., Engineering Manager

**RECOMMENDED ACTION**

RTC staff report summarizing the updated list of RRIF TAC Members.

**BACKGROUND AND DISCUSSION**

As identified in the RTC Regional Road Impact Fee Technical Advisory Committee (RRIF TAC) Statement of Purpose, Objectives, and Procedures, the purpose of the RRIF TAC is to review and recommend any modifications, additions, or updates to be made to the RRIF General Administration Manual (GAM) and Capital Improvements Plan (CIP).

In addition, the RRIF TAC Statement of Purpose, Objectives, and Procedures states that the TAC is comprised of the RTC RRIF Administrator, Community Development Directors and Public Works Directors from the Cities of Reno and Sparks and Washoe County or their designees, a Planning Commission member from the City of Reno, Washoe County, and the City of Sparks, one RTC staff member appointed by the Executive Director of the RTC, and four (4) private sector members appointed by the Chairman of the RTC.

Below is a list of current members.

<b>RTC</b>	<b>Member Position</b>
Dale Keller (Jeff Wilbrecht, Alternate)	RRIF Administrator
Xuan Wang (Graham Dollarhide, Alternate)	Planning Manager
<b>City of Reno</b>	<b>Member Position</b>
Mike Mischel (Angela Fuss, Alternate)	Community Development Director/RRIF Administrator
Hans Meyer (Khalil Wilson, Alternate)	Public Works Director
Alex Velto (Manny Becerra, Alternate)	Planning Commission Member
<b>Washoe County</b>	<b>Member Position</b>
Dwayne Smith (Michon Reede, Alternate)	Community Development Director
Mitchell Fink (Stephen Hein, Alternate)	Public Works Director/RRIF Administrator
Rob Pierce	Planning Commission Member



**City of Sparks**

**Member Position**

---

Jim Rundle (Sienna Reid, Alternate)	Community Development Director
Jon Ericson (Amber Sosa, Alternate)	Public Works Director/RRIF Administrator
Shelley Read	Planning Commission Member

**Private Sector**

**Organization**

---

Ted Erkan	Lewis Management Corp.
John Krmptic	KLS Planning & Design
Kraig Knudsen	Mountain West Builders
Randy Walter	Builders Association of Northern Nevada



**REGIONAL TRANSPORTATION COMMISSION**

*Metropolitan Planning • Public Transportation & Operations • Engineering & Construction*

Metropolitan Planning Organization of Washoe County, Nevada

**MEETING DATE:** April 25, 2024

**AGENDA ITEM 5.2**

To: Regional Road Impact Fee Technical Advisory Committee (RRIF TAC)

From: Jeff Wilbrecht, P.E., Engineering Manager

---

**RECOMMENDED ACTION**

RTC staff presentation on the Regional Transportation Plan (RTP) Update

**BACKGROUND AND DISCUSSION**

The development of the 2050 Regional Transportation Plan is underway. The purpose of the plan is to identify the long-term guiding principles and goals for the regional transportation system and to identify the projects, programs, and services that will be implemented through 2050. This plan will be based on a robust community engagement process and conducted in collaboration with partner agencies. The plan will address the safety, mobility, connectivity, and traffic operations issues that are resulting from strong population and employment growth in the region. Federal regulations require that the long-range planning document be updated every four years. The current RTP approval extends through May 2025.

Staff is currently seeking input on transportation improvement projects, programs, and services that should be considered for inclusion in the 2050 RTP. Projects in the current RTP (2050 RTP Adopted March 2021) which have not been completed or initiated will be evaluated to determine if they still appropriately meet regional transportation needs. In addition, there are some new project recommendations from recently completed planning studies such as the McCarran Boulevard Circulation Study, the Mt Rose Corridor Study, and the Verdi Area Study, Regional Freight Study, Active Transportation Plan. Similarly, there are several improvement projects that have been suggested by agency representatives and members of the public in response to development and growth in population and employment throughout the region. On April 10, 2024, the RTC launched an online survey to solicit ideas from the public on other potential projects, and the responses will be compiled for consideration in the 2050 RTP.

Link to public survey can be found here: [www.rtcwashoe.com/rtp](http://www.rtcwashoe.com/rtp)

**ATTACHMENT(S)**

A. 2050 RTP Project List

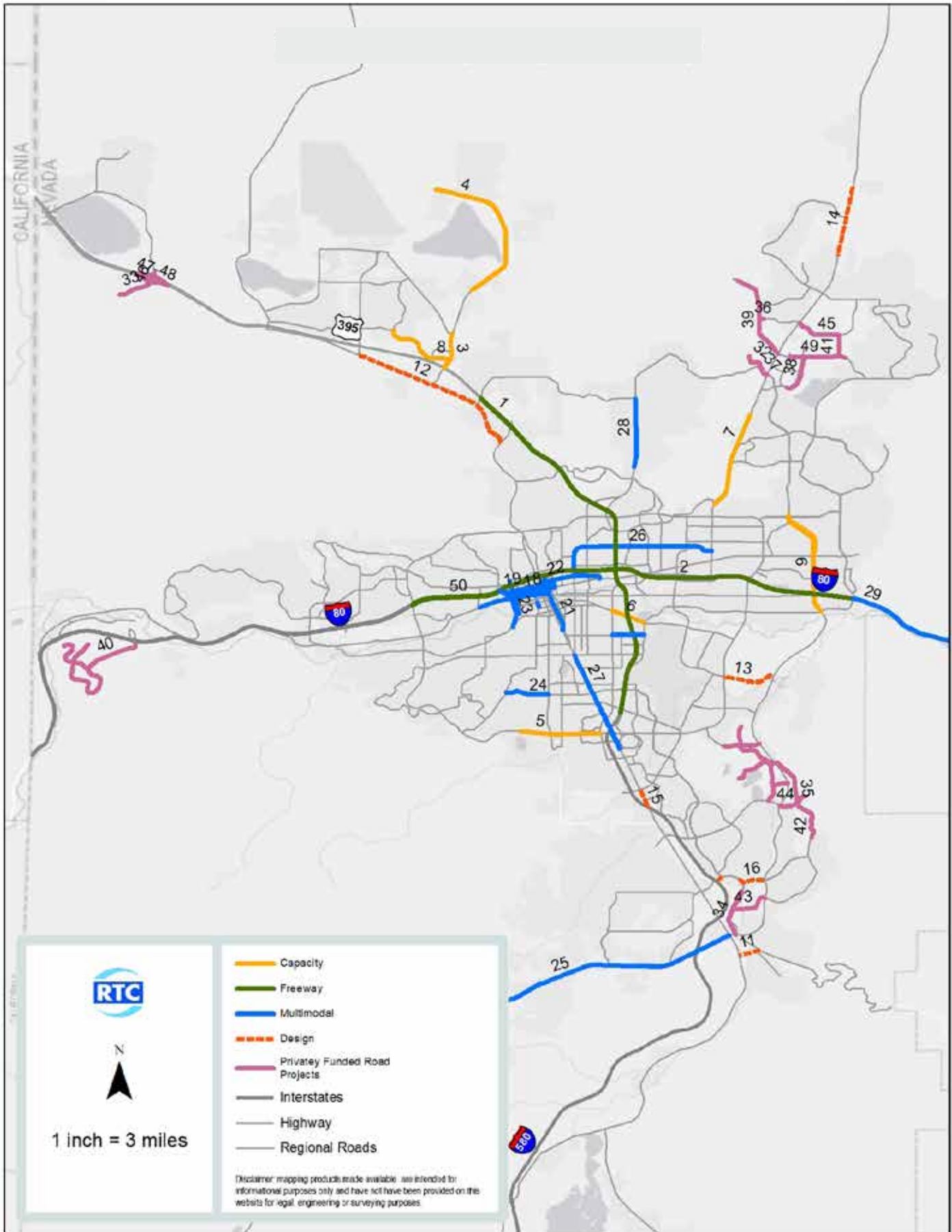
2021-2025 Listing				
Program		Description	Annual Amount	5 Year Amount
A	Bicycle, Pedestrian & ADA	Bus stop ADA improvements, other bike/ped spot improvements	\$3,000,000	\$15,000,000
B	Traffic Signals, ITS Operations & Intersections	3-5 intersection improvements per year	\$10,000,000	\$50,000,000
C	Pavement Preservation	Preventive & corrective maintenance, reconstruction	\$22,500,000	\$112,500,000
D	Debt Service		\$23,000,000	\$115,000,000
	Projects	Limits	Cost	Potential Funding Sources
	Freeway			
1	US 395 Add SB Lane, Aux Lanes, NB & SB	N McCarran to Golden Valley	\$94,750,000	Regional, State, Federal
2	Spaghetti Bowl Phase 2	Spaghetti Bowl	\$130,000,000	Regional, State, Federal
	Capacity			
	- Construction			
3	Lemmon Dr Segment 1 - Widen 4 to 6 Lanes	US 395 and Military Rd	\$22,500,000	Regional, State
4	Lemmon Drive - Segment 2 Traffic Improvements/ Reconstruct	Fleetwood Dr to Ramsay	\$39,000,000	Regional, Federal
5	McCarran Blvd - Intersection & Operations	Kietzke to Greensboro	\$10,000,000	Regional, State, Federal
6	Mill St	Kietzke to Terminal	\$60,000,000	Regional, State, Federal

2021-2025 Listing (continued)				
7	Pyramid Hwy (Phase 1) - Widen & Safety improvements	Queen Way to Golden View	\$54,100,000	Regional, State, Federal
8	Sky Vista Pkwy - Widen 2 to 4 Lanes	Silver Lake Rd to Lemmon Dr	\$15,800,000	Regional
9	Sparks Blvd	Greg St to I-80 WB On Ramps	\$17,500,000	Regional, State, Federal
<b>- Design</b>				
10	Damonte Ranch Pkwy - Widen	Double R to I 580	\$400,000	Regional
11	Geiger Grade - New 4 Lane Rd	Virginia St to Toll Rd	\$5,000,000	Regional, State, Federal
12	North Virginia St - Widening	Panther to Stead Blvd	\$5,000,000	Regional, State, Federal
13	Pembroke Dr - Widen	McCarran to Veterans	\$2,000,000	Regional
14	Pyramid Hwy - Add Southbound Lane	Egyptian Dr to Ingenuity Ave	\$1,500,000	Regional, State
15	S. Virginia St - Add NB Lane	Longley Ln to I-580	\$2,000,000	Regional, State, Federal
16	Steamboat Pkwy and Damonte Ranch Pkwy - Widen	Veterans Pkwy to Promenade Way	\$400,000	Regional
<b>Multimodal</b>				
18	4th St - Multimodal	Stoker Ave to Evans Ave	\$25,900,000	Regional, State, Federal
19	5th St - Multimodal	Keystone to Evans	\$1,676,000	Regional
20	Arlington Ave - Replace Existing Bridges	At Truckee River	\$25,500,000	Regional, State, Federal

2021-2025 Listing (continued)				
22	E 6th St - Bicycle Facility & Safety Improvements	Virginia St to 4th St	\$8,073,000	Regional
23	Keystone Ave - Multimodal Improvements - Design	California to I-80 & Truckee Bridge replacement	\$5,000,000	Regional, State, Federal
24	Moana - Multimodal	Skyline Blvd to Plumas	\$5,600,000	Regional
25	Mt. Rose Hwy - Improvements	Geiger Grade to Joy Lake Rd	\$10,000,000	Regional, State, Federal
26	Oddie Blvd/Wells Ave - Multimodal Improvements	I-80 to Pyramid Hwy	\$36,000,000	Regional
27	S Virginia St - Multimodal and ADA	Plumb Lane to Meadowood	\$25,900,000	Regional, Federal
28	Sun Valley Blvd - Multimodal Improvements	7th Ave to Scottsdale	\$27,000,000	Regional, State
29	Tahoe-Pyramid Trail	Vista Blvd to Mustang	\$3,600,000	Private, Federal
Privately Constructed Roads			Funding Source	
32	5 Ridges Pkwy	Highland Ranch Pkwy to 2nd roundabout	Private	
33	Chase Canyon Segments 1 and 2	New 4 lane road - US 395 to 2nd roundabout	Private	
34	Damonte Ranch Pkwy Extension	Veterans Pkwy to Rio Wrangler Pkwy	Private	
35	Daybreak Regional Road Network (South Meadows)	See map	Private	
36	Dolores Drive Extension	West to Lazy 5 Pkwy	Private	
37	Highland Ranch Pkwy - Widening	Pyramid Hwy to 5 Ridges entrance	Private	

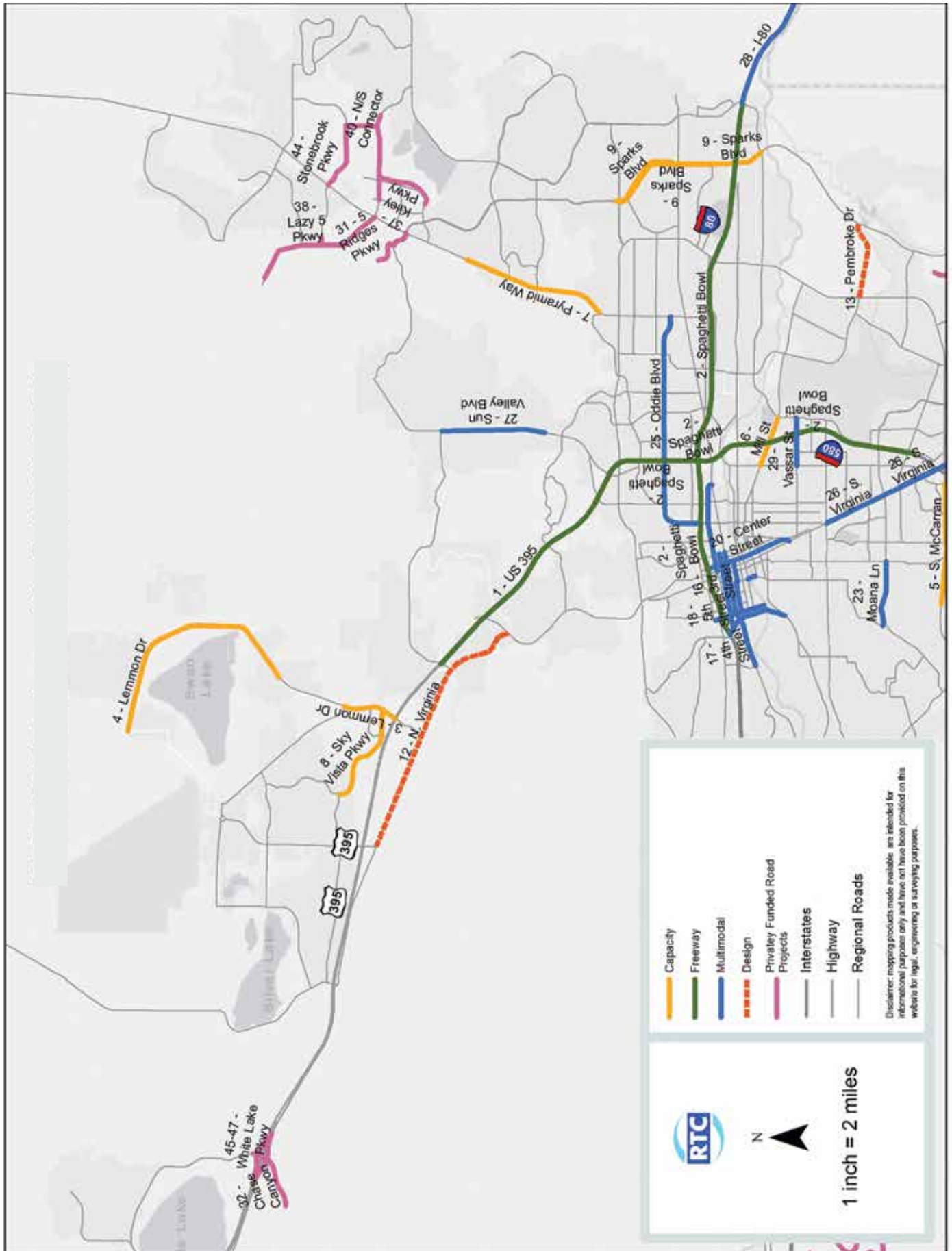
2021-2025 Listing (continued)				
38	Kiley Pkwy	Wingfield Hills Rd to Henry Orr Pkwy	Private	
39	Lazy 5 Pkwy	W Sun Valley Arterial to Pyramid Hwy	Private	
40	Meridian & Santerra Regional Road Network (Verdi)	See map	Private	
41	N/S Connector Rd	Stonebrook Pkwy to Wingfield Hills Rd	Private	
42	Rio Wrangler Pkwy Extension (North)	Bucephalus Pkwy to South Meadows Pkwy	Private	
43	Rio Wrangler Pkwy Extension (South)	Damonte Ranch Pkwy to Veterans Pkwy	Private	
44	South Meadows Extension	Mojave Sky Dr to Rio Wrangler Pkwy	Private	
45	Stonebrook Pkwy	N/S Connector Rd to Pyramid Hwy	Private	
46	Whitelake Pkwy Extension	US 395 to Stonegate Entrance	Private	
47	Whitelake Pkwy Interchange Upgrades (Phase 1)	Interchange Improvement at US 395	Private	
48	Whitelake Pkwy Interchange Upgrades (Phase 2)	Conversion to divergent diamond interchange (DDI)	Private	
49	Wingfield Hills Rd Extension	West to David Allen Pkwy	Private	
Amended Projects				
50	I-80 - Widening	W McCarran Blvd to Keystone Ave	\$60,471,000	Regional, State, Federal

# RTP 2050 PROJECTS (2021-2025)



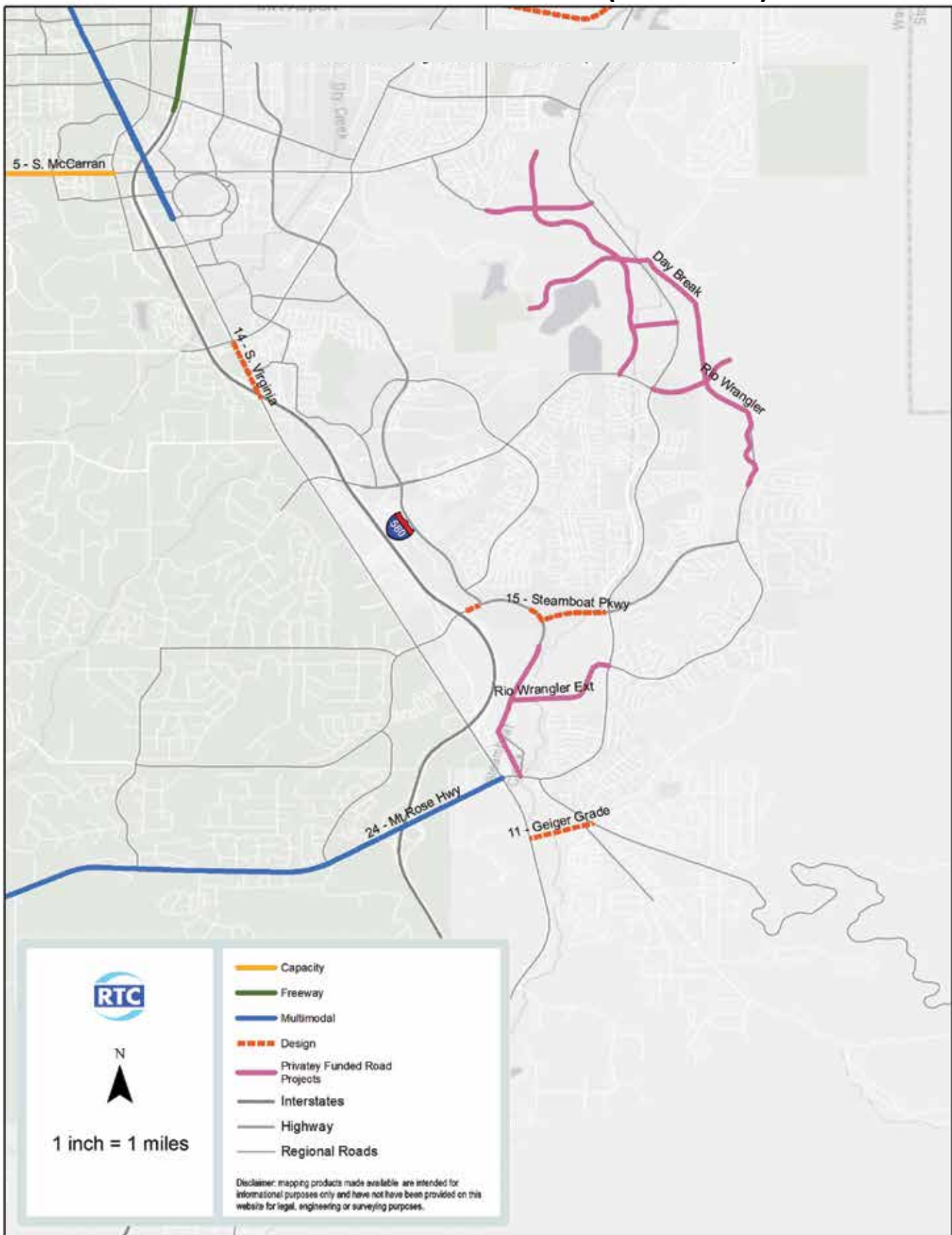


# RTP 2050 PROJECTS – NORTH (2021-2025)





# RTP 2050 PROJECTS – SOUTH (2021-2025)



# RTP 2050 PROJECTS (2021-2025)



2026-2030 Listing				
Program		Description	Annual Amount (est)	5 Year Amount
A	Bicycle, Pedestrian & ADA	Bus stop ADA improvements, other bike/ped spot improvements	\$3,500,000	\$17,500,000
B	Traffic Signals, ITS Operations & Intersections	3-5 intersection improvements per year	\$11,500,000	\$57,500,000
C	Pavement Preservation	Preventive & corrective maintenance, reconstruction	\$25,000,000	\$125,000,000
D	Debt Service		\$23,000,000	\$115,000,000
	Projects	Limits	YOE Cost Rounded	Potential Funding Sources
	Freeway			
1	US 395 - Additional Lane in Each Direction	Golden Valley to Stead Blvd	\$79,177,000	Regional, State, Federal
2	US 395 - Additional Northbound Lane - Design	Clear Acre to Parr	\$19,115,000	Regional, State, Federal
3	Spaghetti Bowl Phase 2	Spaghetti Bowl	\$103,088,000	Regional, State, Federal
	Capacity			
4	Buck Dr - Widen 2 to 4 Lanes	Lemmon Dr to N Hills Blvd	\$1,912,000	Regional
5	Damonte Ranch Pkwy - Widen	Double R to I 580	\$4,723,000	Regional, Private
6	Eagle Canyon - Widen 2 to 4 Lanes - Design	Pyramid Hwy to W Calle de la Plata	\$2,000,000	Regional, State, Federal
7	Geiger Grade - New 4 Lane Rd	Virginia St to Toll Rd	\$84,445,000	Regional, State, Federal

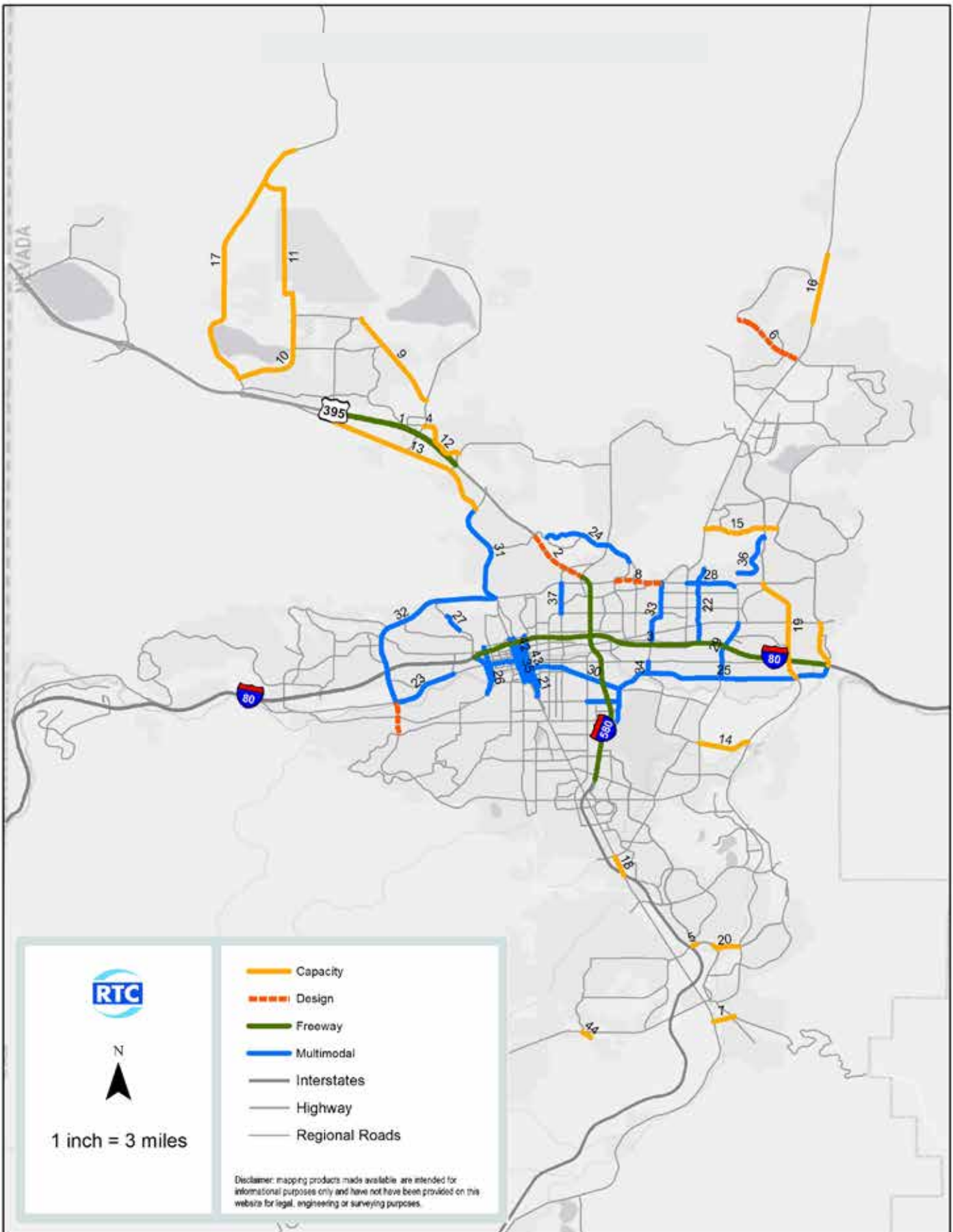
2026-2030 Listing (continued)				
8	McCarran Blvd Safety & Operational Improvements - Design	Plumb Ln to N Virginia St; El Rancho Dr to Rock Blvd	\$15,000,000	Regional, State, Federal
9	Military Rd - Widen 2 to 4 Lanes	Lemmon Dr to Echo Ave	\$25,412,000	Regional
10	Moya Boulevard - Widen 2 to 4 Lanes	Red Rock Rd to Echo Ave	\$19,678,000	Regional, Federal, Private
11	Moya Blvd Extension	Red Rock Dr to Echo Ave	\$74,100,000	Regional
12	N Hills Blvd	Golden Valley Rd to Buck Dr	\$20,465,000	Regional
13	N Virginia St - Widen 2-4 Lanes & Multimodal	Panther Dr to Stead Blvd	\$43,291,000	Regional, State, Federal
14	Pembroke Dr - Widen	McCarran to Veterans	\$19,790,000	Regional
15	Pyramid Hwy/395 Connector Phase 2	Widen Disc Dr from Pyramid to Vista Blvd	\$22,300,000	Regional, State, Federal
16	Pyramid Hwy - Add Southbound Lane	Egyptian Dr to Ingenuity Ave	\$12,144,000	Regional, State
17	Red Rock Rd - Widen 2 to 4 Lanes	US 395 to Placerville Dr	\$58,246,000	Regional, Private
18	S Virginia St - Add NB Lane	Longley Ln to I-580	\$23,613,000	Regional, State, Federal
19	Sparks Blvd Multimodal Improvements and widen 4 to 6 Lanes	I-80 WB On Ramps to Baring Blvd	\$48,351,000	Regional, State, Federal
20	Steamboat Pkwy and Damonte Ranch Pkwy - Widen	Veterans Pkwy to Promenade Way	\$4,610,000	Regional, Private
21	Vista Boulevard Widen 4 to 6 Lanes	I-80 to Prater Way	\$11,244,000	Regional, State, Federal

2026-2030 Listing (continued)				
Multimodal				
22	4th St - Bike lanes (Sparks)	Victorian Ave to Queen Way	\$6,747,000	Regional
23	4th St - Pedestrian & Safety Improvements (Reno)	Stoker to McCarran	\$20,240,000	Regional, State, Federal
24	El Rancho Dr/Dandini Blvd - Sidewalks	Raggio Pkwy to Sullivan Ln	\$20,690,000	Regional
25	Greg St - Sidewalks and Bike lanes	Mill Street to Vista Blvd	\$29,123,000	Regional, Federal, Private
26	Keystone Ave - Multimodal Improvements	California to I-80 & Truckee Bridge replacement	\$61,169,000	Regional, State, Federal
27	Keystone Ave - Sidewalks and Bike Lanes	Coleman Dr to Peavine Rd	\$1,012,000	Regional
28	McCarran - Pedestrian Improvements	Baring to Pyramid Hwy	\$12,594,000	Regional, State, Federal
29	McCarran Blvd - Multimodal & Safety Improvements	Greg to Prater Way	\$10,682,000	Regional, State, Federal
30	Mill St/Terminal Way - Multimodal Improvements	Airport to downtown Reno	\$27,436,000	Regional, State, Federal
31	N Virginia St - Sidewalks and buffered bike lanes	Panther Dr to McCarran Blvd	\$17,878,000	Regional, State, Federal
32	NW McCarran - Safety and Bike Lanes	4th Street to N Virginia	\$10,570,000	Regional, State, Federal
33	Rock Blvd - Enhanced Sidewalks and Bike Lanes	Victorian Ave to McCarran Blvd	\$7,309,000	Regional, Federal

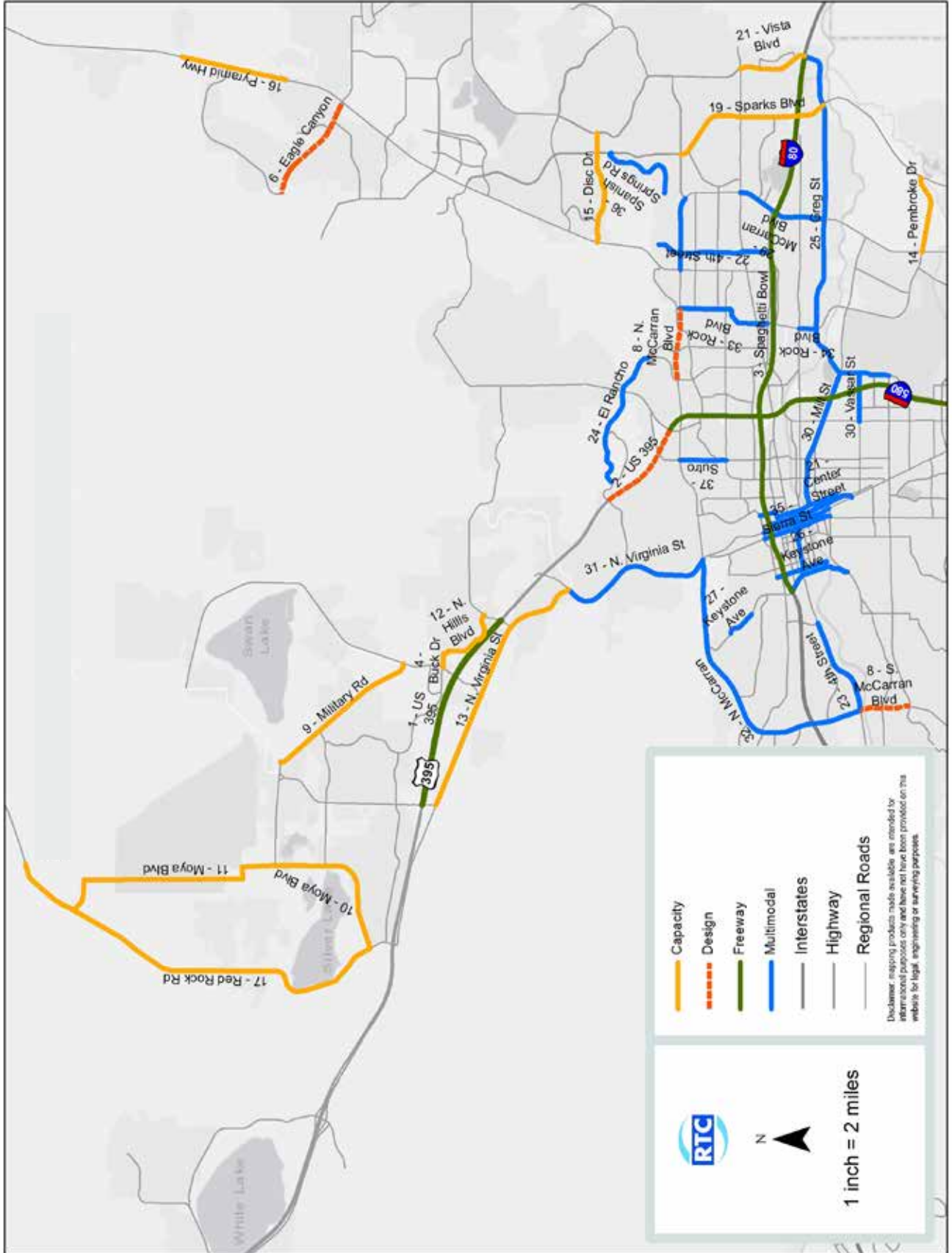


2026-2030 Listing (continued)				
34	Rock Blvd - Multimodal & Safety Improvements	Greg St to Glendale Ave	\$3,823,000	Regional, Federal
35	Sierra St - Widen Sidewalks	California Ave to 9th St	\$5,060,000	Regional
36	Spanish Springs Rd - Safety & Multimodal Improvements	N Truckee Lane to Sparks Blvd	\$8,500,000	Local, Federal*
37	Sutro - Multimodal	N McCarran to Oddie Blvd	\$8,995,000	Regional
Amended Projects				
38	Center St - Widen Sidewalks & Add Bike Lanes	9th St to Moran	\$10,000,000	Regional
39	Vassar St - Bike Facility	Kietzke Ln to Terminal Way	\$1,219,000	Regional
40	Vine St - Bike Facility	Riverside Drive to University Terrace	\$11,300,000	Regional
41	3rd St Bike Facility	Vine St - Evans St	\$7,500,000	Regional
42	Virginia St Multimodal	California Ave - Vine St	\$5,550,000	Regional
43	Lake St/Sinclair St/ Evans Ave	Holcomb Ave - 9th St	\$4,700,000	Regional
44	Butch Cassidy Dr	Extension to Thomas Crk/Mt Rose Hwy	\$11,700,000	Regional

# RTP 2050 PROJECTS (2026-2030)

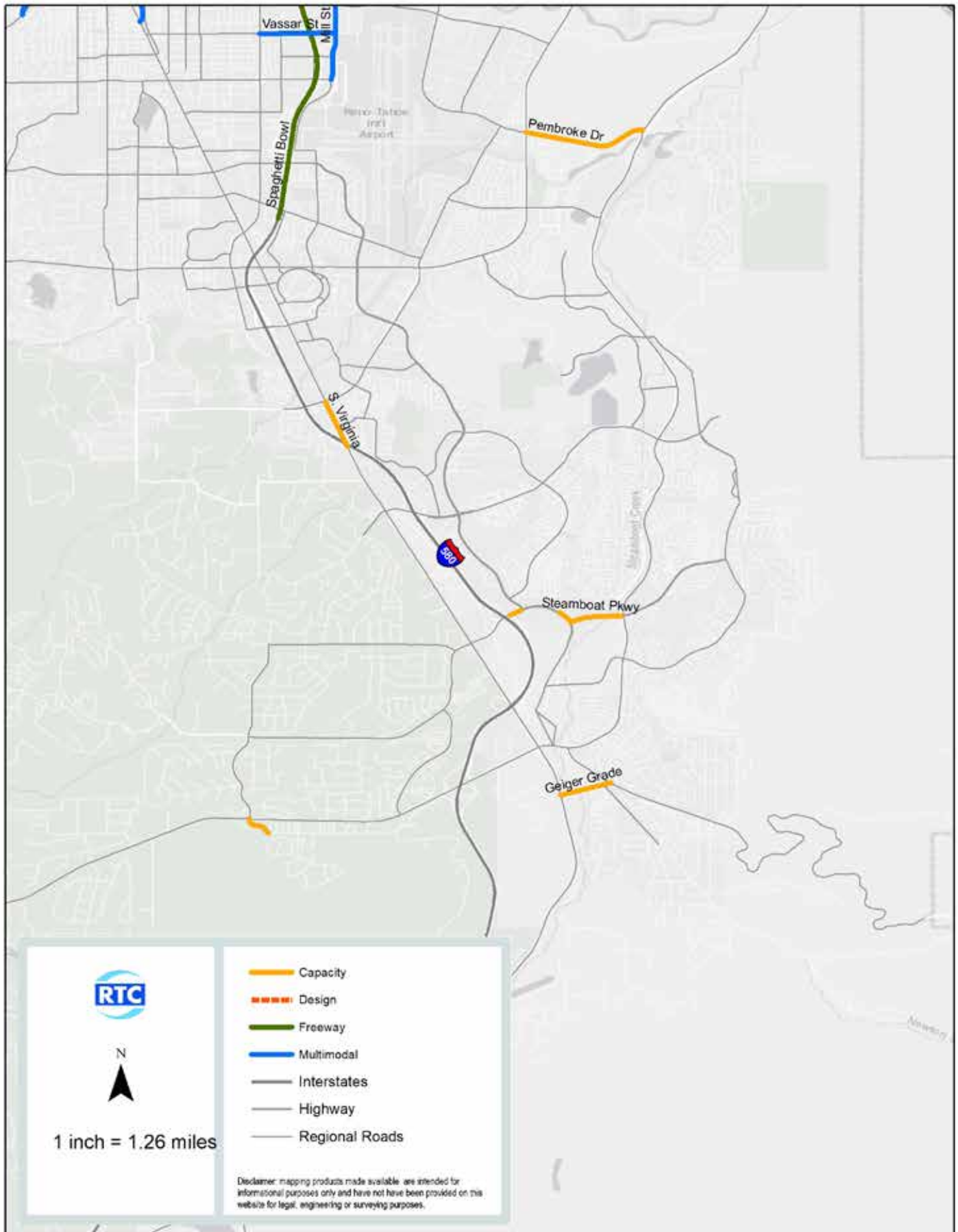


# RTP 2050 PROJECTS – NORTH (2026-2030)





# RTP 2050 PROJECTS – SOUTH (2026-2030)



2031-2050 Listing				
Program		Description	Annual Amount (est)	20 Year Amount
A	Bicycle, Pedestrian & ADA	Bus stop ADA improvements, other bike/ped spot improvements	\$4,570,000	\$91,400,000
B	Traffic Signals, ITS Operations & Intersections	3-5 intersection improvements per year	\$15,232,000	\$304,640,000
C	Pavement Preservation	Preventive & corrective maintenance, reconstruction	\$30,000,000	\$600,000,000
D	Debt Service		\$23,000,000	\$230,000,000
	Projects	Limits	YOE Cost Rounded	Potential Funding Sources
	Freeway			
1	Spaghetti Bowl Phases 3-5	Spaghetti Bowl	\$1,500,000,000	Regional, State, Federal
2	US 395 - Widen for Connector traffic - Add'l NB Lane	Clear Acre to Parr Blvd	\$248,282,000	Regional, State, Federal
3	US 395 - Widening - Design & ROW	Stead to Red Rock Rd	\$100,000,000	Regional, State, Federal
4	I-580 - Widening	Neil Rd to S Virginia St/Kietzke Ln	\$53,617,000	Regional, State, Federal
6	I-80 - Widening	Garson Rd to West 4th St	\$193,295,000	Regional, State, Federal
7	I-80 Operations & Capacity	Vista Blvd to US Parkway	\$338,532,000	Regional, State, Federal

2031-2050 Listing (continued)				
Capacity				
8	9th St Extension	To N Wells Ave	\$3,351,000	Regional, State, Federal
9	Arrowcreek Pkwy - Widen	Wedge Pkwy to Thomas Creek Rd	\$35,948,000	Regional
10	Arrowcreek Pkwy - Widen 2 to 4 Lanes	Wedge Pkwy to Zolezzi Ln	\$12,643,000	Regional
11	Double R Blvd - Widen & Multimodal	South Meadows Pkwy to Longley Ln	\$35,100,000	Regional
12	Eagle Canyon - Widen 2 to 4 Lanes	Pyramid Hwy to W Calle de la Plata	\$14,500,000	Regional, State, Federal
13	Lemmon Valley - Spanish Springs Connector - New 4 Lane Road	Lemmon Valley to Spanish Springs	\$213,249,000	Regional, State, Federal
14	Echo Ave - Extension	Red Rock Rd to Moya Blvd	\$29,702,000	Regional
15	Estates Rd - Reconstruct	Lemmon Dr to Golden Valley Rd	\$48,895,000	Regional, State, Federal
16	Golden Valley Rd/7th Ave (O'Brien Pass)	N Hills to W 7th Ave	\$111,042,000	Regional, State, Federal
17	Highland Ranch Parkway - Widen	Pyramid to Sun Valley Blvd	\$45,239,000	Regional, State, Federal
18	Lemmon Dr Extension	To Red Rock Rd	\$161,460,000	Regional, State, Federal
19	McCarran Blvd	Plumb Ln to Mayberry Dr	\$20,868,000	Regional, State, Federal
20	McCarran Blvd - Widen 4 to 6 Lanes	El Rancho Dr to Rock Blvd	\$40,822,000	Regional, State, Federal
21	McCarran Boulevard - Widen 4 to 6 Lanes	Sky Mountain Dr to I-80	\$12,033,000	Regional, State, Federal

2031-2050 Listing (continued)				
22	McCarran Blvd Widen 4 to 6 Lanes	7th St to N Virginia St	\$95,353,000	Regional, State, Federal
23	McCarran - Widening	Mayberry to 4th St	\$61,994,000	Regional, State, Federal
24	Mira Loma Dr - Widen 2 to 4 Lanes	McCarran to Veterans	\$14,318,000	Regional
25	North Virginia - New Road	Stead to White Lake	\$86,213,000	Regional, State, Federal
26	Panther Extension	N. Virginia to Panther to North Hills Blvd	\$12,947,000	Regional, Private
27	Pyramid/395 Connector Phase 3 Construct Connector	US 395 to Pyramid Hwy south of Sparks Blvd	\$378,300,000	Regional, State, Federal
28	Pyramid/395 Connector Phase 4 System Ramps	System Ramps at US 395	\$85,800,000	Regional, State, Federal
29	Pyramid Hwy Phase 5 - Widen 2 to 4 Lanes	Sparks Blvd to Calle de la Plata	\$205,500,000	Regional, State, Federal
30	Pyramid/395 Phase 6 West Sun Valley Interchange	Interchange and local improvements	\$60,200,000	Regional, State, Federal
31	Record St - Realignment and Parking Garage Access	Evans Ave to 9th Street; Lake St to Evans Ave	\$2,175,000	Regional, State, Federal
32	Rio Wrangler - Widen	Spring Flower Dr to Western Skies Dr	\$3,503,000	Regional
33	Robb Dr Extension	4th St to I-80	\$28,332,000	Regional, State, Federal
34	S McCarran - Widen	Manzanita to Plumb Ln	\$117,896,000	Regional, State, Federal
35	S McCarran - Widen	Lakeside to Manzanita	\$43,564,000	Regional, State, Federal

2031-2050 Listing (continued)				
36	Silver Knolls Blvd - New Road - Private Funding Required	Red Rock Rd to Silver Knolls Blvd	\$74,485,000	Regional, Private
37	SS/ER Pkwy - New Road - Private Funding Required	Red Rock Rd to Mud Spring Dr	\$144,400,000	Regional, Private
38	TRI Center Northern Connection - Private Funding Required	La Posada to TRI Center	\$372,900,000	Regional, State, Federal, Private
39	TRI Center Southern Connection - Private Funding Required	Eastern Daybreak Boundary to Washoe County Line	\$68,392,000	Regional, State, Federal, Private
40	Vista - Widening	Wingfield Pkwy to Hubble Dr	\$40,060,000	Regional, State, Federal
41	Vista Knoll Pkwy Ext	To Lemmon Dr	\$8,987,000	Regional, Private
42	White Lake Pkwy - Widen - Private Funding Required	Stonegate Entrance to Village Pkwy	\$53,464,000	Regional, Private
43	West Sun Valley - Arterial New 4 Lane Road	Dandini Blvd to Eagle Canyon	\$112,260,000	Regional, State, Federal
<b>Multimodal</b>				
44	7th St/University Terr - Buffered Bike Lanes	Sierra St to Stoker Ave	\$6,150,000	Regional
45	7th St - Bike Lanes	Stoker Ave to N McCarran	\$18,431,000	Regional
46	9th St - Buffered Bike Lanes	Evans Ave - Valley Rd	\$1,800,000	Regional
47	9th St/G St - Enhanced Sidewalks and Bike Lanes	Wells Avenue to El Rancho Dr	\$8,530,000	Regional
48	Baring Boulevard - Bike Lanes	McCarran Blvd to Vista Blvd	\$11,424,000	Regional
49	Eastlake Blvd - Bike Lanes or Multi-Use Path	Old US 395 to I-580 Interchange	\$61,690,000	Regional

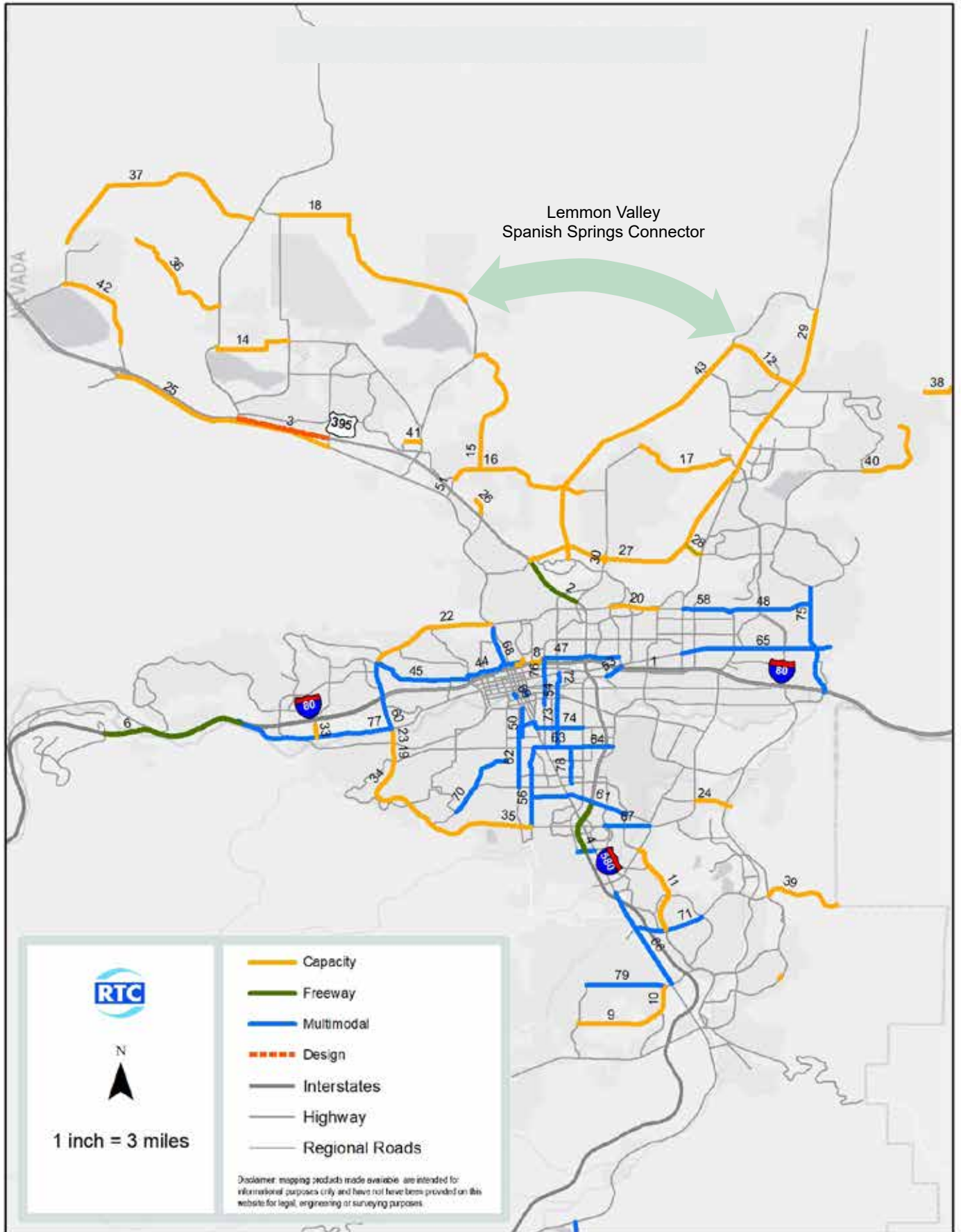
2031-2050 Listing (continued)				
50	Forest St Bike Facility	California Ave to Mount Rose St	\$914,000	Regional
51	Golden Valley Rd - Bike Lanes	N Virginia St to N Hills Blvd	\$6,702,000	Regional
52	Holcomb Ave - Buffered Bike Lanes	Center St - Vassar St	\$696,000	Regional
53	Kietzke Ln Multimodal Improvements	Galletti Way to Virginia St	\$13,252,000	Regional
54	Kirman Buffered - Bike Lanes	Kuenzli St to Mill St; Ryland Ave to Casazza	\$1,676,000	Regional
55	Lake St - Replace Existing Bridge	At Truckee River	\$27,570,000	Regional
56	Lakeside Drive - Bike Lanes	McCarran Blvd to Plumb Ln	\$11,881,000	Regional
57	Mary St - Bike Facility	Virginia St to Plumas St	\$2,132,000	Regional
58	McCarran - Pedestrian Improvements	Baring to Pyramid	\$17,060,000	Regional, State, Federal
59	Neil Rd - Bike Lane	Kietzke to S Virginia	\$3,808,000	Regional
60	NW McCarran - Safety and Bike Lanes	4th St to N Virginia	\$14,318,000	Regional, State, Federal
61	Peckham - Multimodal	Lakeside Dr to Airway Dr	\$26,199,000	Regional
62	Plumas/Mary St - Multimodal	California to Moana Ln	\$28,789,000	Regional
63	Plumb Lane - Sidewalks and Bike Lanes	Lakeside Dr to Kietzke Ln	\$8,530,000	Regional
64	Plumb Ln - Bike Lanes and Sidewalks	Kietzke Ln to Terminal Way	\$5,179,000	Regional
65	Prater Way - Bike Lanes	Pyramid Hwy to Petes Way	\$59,557,000	Regional
66	S Virginia St - Add Sidewalks, Bus/Bike (RAPID)	E Patriot Blvd to Arrowcreek	\$35,186,000	Regional, State, Federal

**2031-2050 Listing (continued)**

67	SE McCarran - Multiuse Path	Longley Ln to Neil Rd	\$11,576,000	Regional, State, Federal
68	Sierra St - Multimodal	9th St to N Virginia	\$20,411,000	Regional
69	Sierra St - Replace Existing Bridge	Truckee River	\$29,093,000	Regional
70	Skyline Blvd - Bike Lanes	Cashill Blvd to Arlington Ave	\$17,974,000	Regional
71	South Meadows Pkwy - Bike Lanes	I-580 NB Ramps to Double Diamond Pkwy	\$10,205,000	Regional
72	Sutro St - Buffered Bike Lanes	4th St to Kuenzli	\$609,000	Regional
73	Sutro/Kirman - Sidewalks	Truckee River to Plumb Ln	\$2,742,000	Regional
74	Vassar St - Bike Facility	Holcomb to Kietzke	\$4,300,000	Regional
75	Vista Blvd - Sidewalks and Bike Lanes	Greg St to S Los Altos Pkwy	\$13,709,000	Regional
76	Wells Ave - Bike Lanes, Bike/Ped Facilities Over Truckee River	Moran St to E 9th St	\$12,338,000	Regional
77	West 4th St - Multimodal	S McCarran to I-80	\$43,411,000	Regional, State, Federal
78	Yori Ave - Sidewalks and Bike Lanes	Moana Ln to Plumb Ln	\$10,205,000	Regional
79	Zolezzi Ln - Sidewalks	S Virginia St to Thomas Creek Rd	\$10,205,000	Regional

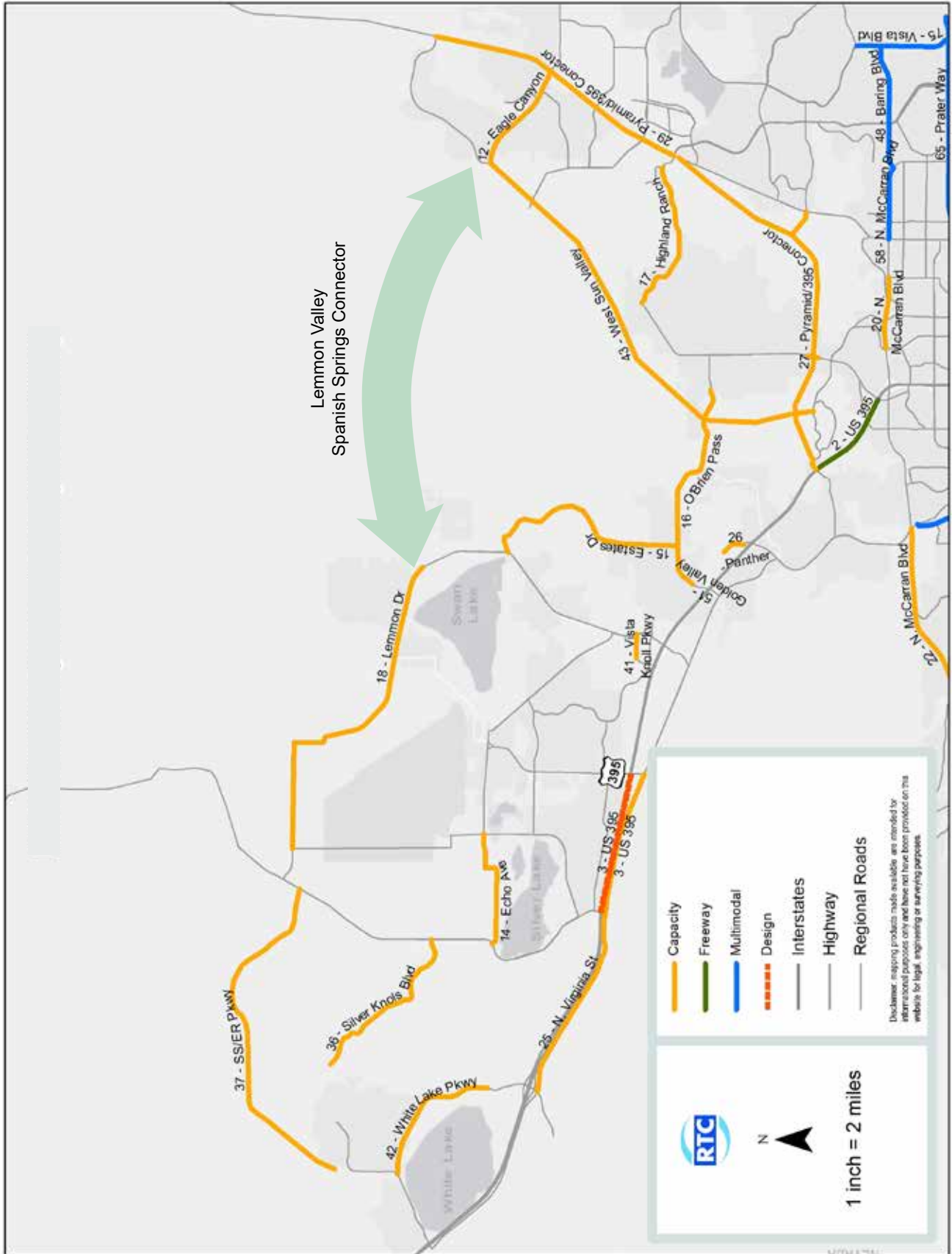


# RTP 2050 PROJECTS (2031-2050)





# RTP 2050 PROJECTS (2031-2050)



Unfunded Needs	Description	Cost
US 395 - Widening	Stead to Red Rock Rd	\$1,157,640,000
I-580 - Widening	S Virginia St @ Mt Rose to South Meadows Pkwy	\$163,744,000
I-580 - Widening	South Meadows Pkwy to Neil Rd	\$242,799,000
US 395 - Widening	Stead to Red Rock Rd	\$1,097,925,000
Spaghetti Bowl Phase 5 (partial)	Spaghetti Bowl	\$685,442,000
I-80 - Widening (partial)	Vista Blvd to USA Pkwy	\$664,878,000



**REGIONAL TRANSPORTATION COMMISSION**

*Metropolitan Planning • Public Transportation & Operations • Engineering & Construction*

Metropolitan Planning Organization of Washoe County, Nevada

**MEETING DATE:** April 25, 2024

**AGENDA ITEM 5.3**

To: Regional Road Impact Fee (RRIF) Technical Advisory Committee (TAC)

From: Jeff Wilbrecht, P.E., Engineering Manager

---

**RECOMMENDED ACTION**

RTC staff presentation regarding plans to review and update the RRIF General Administrative Manual (GAM) and RRIF Capital Improvement Plan (RRIF CIP) following the 2050 Regional Transportation Plan (RTP)

**BACKGROUND AND DISCUSSION**

In conjunction with the 2050 Regional Transportation Plan (RTP), the RTC reviews and updates the GAM. In addition, as required by the Nevada impact fee statute, NRS 278B, Impact Fees for New Development, impact fee programs require the preparation of a “capital improvements plan” (RRIF CIP), a list of capacity projects, over a period not to exceed 10 years for which the fees are based. The update to the RTP leads the effort in reviewing and evaluating projects for consideration in the RRIF CIP.

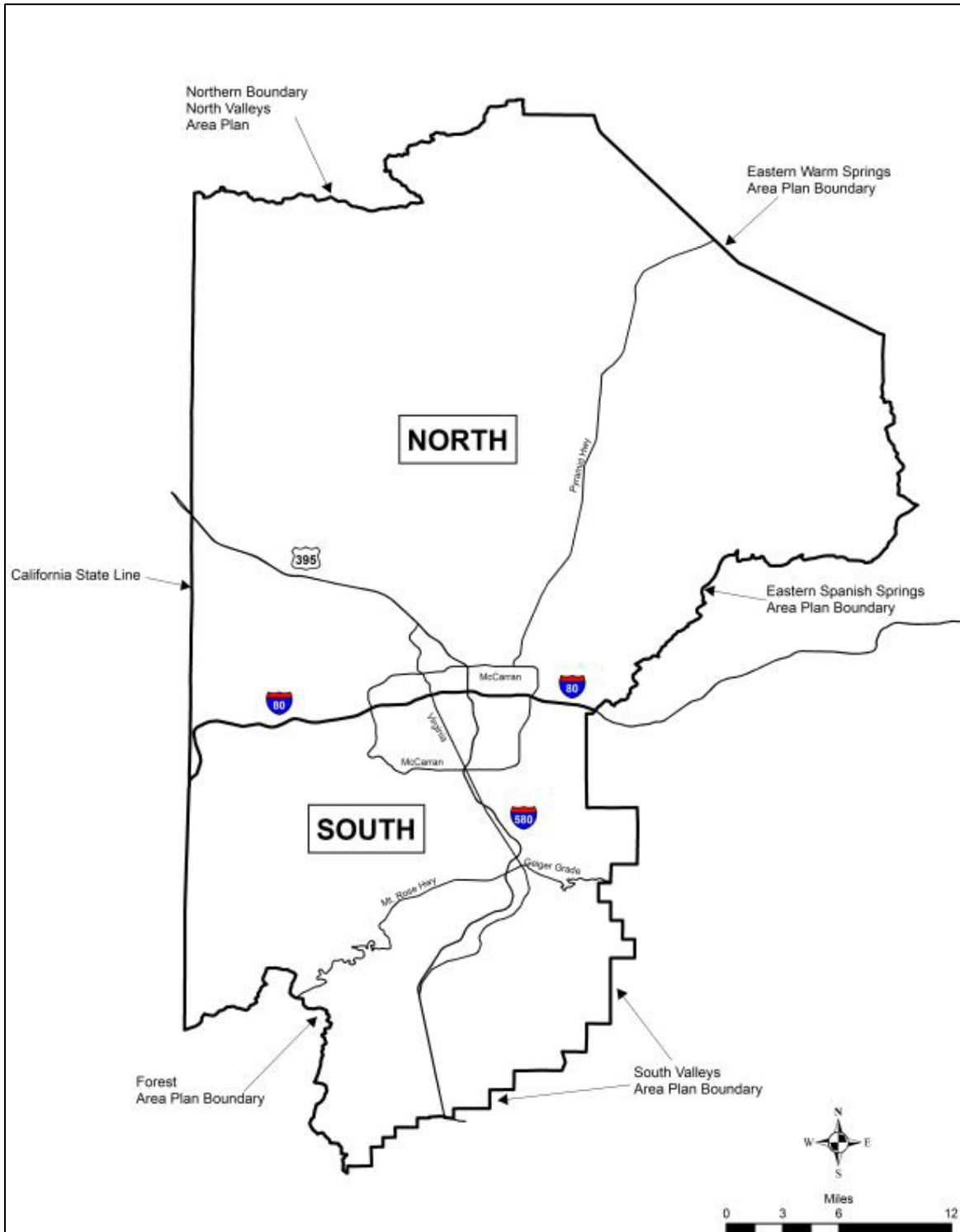
The attachment includes the project listing for the 7th Edition RRIF GAM and RRIF CIP developed following the adoption of the 2021 Edition of the 2050 RTP. Since the RRIF program has two separate Service Areas, the projects in the first 10 years of the RTP must also be divided into separate RRIF CIPs for each Service Area. Construction cost estimates were developed as part of the 2050 RTP process for each roadway project based on generalized cost estimates for the various types of improvements.

The RRIF TAC is encouraged to provide any feedback or recommendation to the use of the GAM and provide input on the review and update of the RRIF CIP.

**ATTACHMENT(S)**

- A. RRIF Service Areas Map - North and South CIP Street Projects List (7<sup>th</sup> Edition)

RRIF SERVICE AREAS



**CIP Street Projects and Facility Expansion**  
**North Benefit District**

RTP Time Frame	Service Area	Roadway	Limits	Description	RTP (\$)	Capacity Related North (\$)
2026-30	N	Buck Dr	Lemmon Dr to N Hills Blvd	Widen 2 to 4 lanes	\$ 1,912,000	\$ 1,912,000
2021-25	N	Dolores Drive (Private)	Existing Dolores west to Lazy 5 Pkwy	New 2 lane road	\$ 1,500,000	\$ 180,000
2021-25	N	Highland Ranch Pkwy (Private)	Five Ridges to Pyramid Hwy	Widen 2 to 4 lanes	\$ 1,400,000	\$ 1,400,000
2021-25	N	Kiley Pkwy (Private)	Wingfield Hills Rd to Henry Orr Pkwy	New 2 lane road	\$ 6,400,000	\$ 768,000
2021-25	N	Lazy 5 Pkwy (Private)	W Sun Valley Arterial to Pyramid Hwy	New 4 lane road west of Pyramid Hwy transitioning to 2 lanes at future development entrance	\$ 27,600,000	\$ 6,624,000
2021-25	N	Lemmon Drive	US 395 to Military Rd	Widen 4 to 6 lanes - US 395 to Military Rd	\$ 22,500,000	\$ 22,500,000
2021-25	N	Lemmon Drive	Fleetwood Dr to Chickadee Dr	Widen 2 to 4 lanes - Fleetwood Dr to Chickadee Dr	\$ 39,000,000	\$ 39,000,000
2026-30	N	Military Rd	Lemmon Dr to Echo Ave	Widen 2 to 4 lanes	\$ 25,412,000	\$ 25,412,000
2026-30	N	Moya Blvd	Red Rock Rd to Echo Ave	Widen 2 to 4 lanes	\$ 19,678,000	\$ 19,678,000
2026-30	N	Moya Blvd Extension	Lemmon Dr to Echo Ave	New 2 lane road	\$ 74,100,000	\$ 8,892,000
2026-30	N	N. Hills Blvd	Golden Valley Rd to Buck Dr	Widen 2 to 4 lanes	\$ 20,465,000	\$ 20,465,000
2021-25	N	N/S Connector Rd (Private)	Stonebrook Pkwy to Wingfield Hills Rd	New 2 lane road	\$ 8,400,000	\$ 1,008,000
2026-30	N	North Virginia St	McCarran Blvd to Panther	Sidewalks and bike lanes. An off-street shared-use path may be considered	\$ 17,878,000	\$ 2,741,000
2026-30	N	North Virginia St	Panther to Stead Blvd	Widen from 2 to 4 lanes and multimodal improvements	\$ 43,291,000	\$ 43,291,000
2021-25	N	Oddie Blvd/Wells Ave	I-80 to Pyramid Way	Multimodal improvements	\$ 36,000,000	\$ 5,400,000
2021-25	N	Parr Blvd	Ferrari McLeod to Raggio Pkwy	Interchange improvements	\$ 7,700,000	\$ 770,000
2021-25	N	Pyramid Hwy/Sun Valley/US 395 Connector Phase 1	Queen Way to Golden View	Widen Pyramid to 6 lanes from Queen Way to Golden View	\$ 54,100,000	\$ 54,100,000
2026-30	N	Pyramid Hwy/Sun Valley/US 395 Connector Phase 2	Disc Drive Widening	Widen Disc drive from Pyramid Hwy to Vista Blvd	\$ 22,300,000	\$ 22,300,000
2026-30	N	Red Rock Rd	US 395 to Placerville Drive	Widen 2 to 4 lanes	\$ 58,246,000	\$ 58,246,000
2026-30	NS	Sierra Street	California Ave to 9th St	Widen sidewalks & add bike lanes	\$ 5,060,000	\$ 75,900
2021-25	N	Sky Vista Pkwy	Lemmon Dr to Silver Lake Rd	Widen 2 to 4 lanes	\$ 15,800,000	\$ 15,800,000
2021-25	NS	Sparks Blvd	Greg to Baring	Multimodal improvements, widen 4 to 6 lanes - Greg to I-80, widen 4-6 lanes - I-80 to Springland	\$ 40,000,000	\$ 36,000,000
2026-30	NS	Sparks Blvd	Greg to Baring	Multimodal improvements, widen 4 to 6 lanes - Greg to I-80, widen 4-6 lanes - I-80 to Springland	\$ 44,977,000	\$ 40,479,300
2021-25	N	Stonebrook Parkway (Private)	N/S Connector Rd to Pyramid Highway	New 2 lane road	\$ 8,100,000	\$ 972,000
2021-25	N	Sun Valley Blvd	7th Ave to Scottsdale	Multimodal improvements	\$ 25,000,000	\$ 3,000,000
2021-25	N	Victorian Avenue	16th Street to Pyramid Way	Bike lanes	\$ 2,300,000	\$ 345,000
2026-30	N	Vista Blvd	I-80 to Prater Way	Widen 4 to 6 lanes	\$ 11,244,000	\$ 11,244,000
2021-25	N	Whitelake Parkway (Private)	US 395 Interchange Improvements	Interchange improvements	\$ 28,000,000	\$ 4,200,000
2021-25	N	Whitelake Parkway (Private)	US 395 to Town Center North Road	Widen 2 to 4 lanes	\$ 2,800,000	\$ 2,800,000
2021-25	N	Wingfield Hills Rd (Private)	Existing Wingfield Hills Rd west to DavidAllen Pkwy	New 4 lane road	\$ 5,000,000	\$ 2,500,000

**\$ 452,103,200**

\*The Private projects will be constructed by private developers. These projects are identified in the 2050 RTP, but the costs are not identified in the 2050 RTP. For purposes of this RRIF CIP, the cost of these projects were determined using the same methodology used in the 2050 RTP.

**CIP Street Projects and Facility Expansion**  
**South Benefit District**

RTP Time Frame	Service Area	Roadway	Limits	Description	RTP (\$)	RRIF Share North (\$)
2021-25	S	4th Street (Reno)	Keystone Avenue to Evans Ave	Enhanced sidewalks and bus/bike lanes, intersection improvements	\$ 35,000,000	\$ 5,250,000
2021-25	S	Center Street	Moran to 9th Street	Widen sidewalks & add bike lanes	\$ 10,000,000	\$ 1,500,000
2021-25	S	Damonte Ranch Pkwy (Private)	Veterans Pkwy to Rio Wrangler Pkwy	New 2 lane road	\$ 7,100,000	\$ 1,065,000
2026-30	S	Damonte Ranch Pkwy (Private)	I-580 to Double R	Roadway widening	\$ 4,723,000	\$ 4,723,000
2021-2025	S	Day Break (Private)	South Meadows Pkwy to Rio POCO Rd	Traffic and circulation improvements	\$ 10,400,000	\$ 10,400,000
2026-30	S	Geiger Grade Realignment	Virginia St to Toll Rd	New 4 lane road	\$ 84,445,000	\$ 42,222,500
2026-30	S	Keystone Ave	California to I-80	Multimodal improvements and Truckee River bridge replacement	\$ 61,169,000	\$ 9,175,350
2021-25	S	McCarran Blvd	Keitzke to Greensboro	Intersection and Operations	\$ 10,000,000	\$ 10,000,000
2021-25	S	Meridian & Santerra (Verdi) (Private)	Verdi Regional Road Network	Traffic and circulation improvements	\$ 27,500,000	\$ 27,500,000
2026-30	S	Mill Street	Keitzke to Terminal	Roadway widening and multimodal	\$ 60,000,000	\$ 60,000,000
2026-30	S	Mill St/Terminal Way	Reno Tahoe International Airport to Lake St(downtown Reno)	Multimodal & intersection improvements, add EB lane from Keitzke Ln to US 395	\$ 27,436,000	\$ 27,436,000
2026-30	S	Pembroke Drive	McCarran Blvd to Veterans Pkwy	Roadway widening and multimodal	\$ 19,790,000	\$ 19,790,000
2026-30	S	Rio Wrangler Extension North (Private)	South Meadows Pkwy to Bucephalus Pkwy	New 2 lane road	\$ 6,000,000	\$ 900,000
2026-30	S	Rio Wrangler Extension South (Private)	Damonte Ranch Pkwy to Veterans Pkwy	New 2 lane road	\$ 4,700,000	\$ 705,000
2026-30	S	S. Virginia Street	I-580 to Longley	Add NB Lane	\$ 23,613,000	\$ 23,613,000
2026-30	NS	Sierra Street	California Ave to 9th St	Widen sidewalks & add bike lanes	\$ 5,060,000	\$ 683,100
2026-30	S	South Meadows Extension (Private)	Mojave Sky Drive to Rio Wrangler	New 4 lane road	\$ 6,200,000	\$ 3,100,000
2021-25	NS	Sparks Blvd	Greg to Baring	Multimodal improvements, widen 4 to 6 lanes - Greg to I-80, widen 4-6 lanes - I-80 to Springland	\$ 40,000,000	\$ 4,000,000
2026-30	NS	Sparks Blvd	Greg to Baring	Multimodal improvements, widen 4 to 6 lanes - Greg to I-80, widen 4-6 lanes - I-80 to Springland	\$ 44,977,000	\$ 4,497,700
2026-30	S	Steamboat Pkwy	Promenade Way to Veterans Pkwy	Widen from 4 to 6 lanes	\$ 4,610,000	\$ 4,610,000
2021-25	S	Vassar Street	Holcomb Avenue to Terminal Way	Bike lanes	\$ 4,300,000	\$ 645,000
2021-25	S	Vine Street	Riverside Drive to University Terrace	Bike lanes	\$ 11,300,000	\$ 1,695,000

**\$ 263,510,650**

\*The Private projects will be constructed by private developers. These projects are identified in the 2050 RTP, but the costs are not identified in the 2050 RTP. For purposes of this RRIF CIP, the cost of these projects were determined using the same methodology used in the 2050 RTP.