



REGIONAL TRANSPORTATION COMMISSION
Public Transportation • Streets and Highways • Planning



RTC Transit Fixed Route Bus Operating Statistics

**RTC RIDE
RTC RAPID
RTC REGIONAL CONNECTOR**

March 2024

RTC Transit Fixed Route Bus Operating Statistics Report

TABLE OF CONTENTS

RTC Transit Fixed Route Bus Highlights..... Page ii

RTC Transit Fixed Route Bus Summary Page iv

System Reports.....Page 1

Economic DataPage 5

Route Comparison Data.....Page 7

Monthly Operating Statistics.....Page 9

RTC RAPID Virginia Line & Route 1Page 14

RTC RAPID Lincoln Line & Route 11Page 16

RTC REGIONAL CONNECTOR Carson LinePage 18

RTC TMCC and UNR Education Pass.....Page 20

RTC Transit Fixed Route Bus Highlights

March 2024

RTC Transit Fixed Route Bus

- There was a service change effective January 6. Weekend schedules adjusted for Route 9. Weekday schedules adjusted for Route 16. Timing adjusted for Route 11. The 'Desert Skies' loop was removed for Route 5.
- For the month of March, there were 442,102 rides, **up 8.6%** compared with last year (page 1). Weighted average daily ridership was 14,500, **up 11.7%** compared with last year (page 3).
- For the most recent 12 months, there were 5.19 million rides **up 10%** compared with the previous 12 months.
- In March, there were 22,520 service hours, **down 0.6%** compared with last year (page 9).
- Productivity was 19.6 rides per service hour, **up 9.2%** compared with last year (page 9).

External Impacts on Ridership

- Weather was better this month compared with last year. There were nine days of rain and five days of snow this month compared with sixteen days of rain and nine days of snow last March. The average temperature this month was 44.1° F, up 5.2° F compared with last year.
- The Reno-Sparks area preliminary unemployment rate in February was 4.2%. Unemployment has been gradually trending upward since a low of 2.8% in December 2021.
- Nevada's preliminary unemployment rate for February was 5.0%. The national unemployment rate for January was 3.7% staying about the same for the last two years.

Historical Impacts Causing a Downward Trend in Bus Ridership

- According to Bureau of Labor Statistics, 27% of US employees worked remotely at least part of the time in 2023, with several academic surveys suggesting it is closer to 50%*.
- In April 2022, the City of Reno entered an agreement with Bird electric scooters to serve Reno.
- In 2021, Keolis transit workers went on strike August 3 to 13, September 27 to October 20, and November 9 to December 3. Limited service was provided on Routes 1, 7, and 11 and RTC REGIONAL CONNECTOR to Carson City. RTC provided free rides on RIDE, FlexRIDE, taxis, and UberX during the second and third strikes.
- A combination of the pandemic, stimulus checks, easy car financing, and gig jobs requiring cars has likely resulted in a large number of people abandoning transit for car ownership.
- In response to the COVID-19 pandemic, Governor Sisolak ordered the shutdown of casinos and other nonessential businesses in March 2020. In May 2020, Governor Sisolak reopened a number of businesses including bars, salons, gyms, and retail. Casinos were allowed to reopen in June 2020. In May 2021, maximum business capacity increased to 100% in Washoe County.
- There has been an increase in people working primarily from home, approximately eight million in 2018 according to US Census Bureau estimates, taking over transit as the second most common means of getting to work.
- While employment has increased in the region, the makeup of local employment has significantly changed. When Reno was a tourism and gaming town, a large portion of employment was in the low-wage, service industry whereas recently jobs tend to be higher wage and geographically dispersed requiring cars.
- Uber started permanent service in Reno in 2015 and Lyft started shortly after.
- As of 2014, Nevada provides driver's licenses for people who are undocumented immigrants.
- As downtown and midtown areas in-fill and gentrify, this also pushes lower income people to the suburbs where they are much more likely to need cars. This is a nationwide trend.
- The drop in ridership (before COVID) has been a nationwide trend as illustrated by the chart on page 4 which compares RTC transit ridership with US and Canadian bus ridership.
- With the growth of online shopping and food delivery, it is also likely that bus trips used for shopping and dining out has fallen substantially, especially for those with mobility challenges who would prefer online shopping and food delivery. Also, people without cars may decide to purchase a car with the intention of using the car to deliver food and finance the car.

* - <https://www.forbes.com/sites/forbesfinancecouncil/2023/11/06/changing-environment-altering-employer-obligations-for-remote-workers/?sh=7c9e531e2145>



RTC Transit Fixed Route Bus Summary

Route Ridership

- For March, Route 1 (serving S Virginia St between downtown Reno and Meadowood Mall) had the highest productivity in the system with 26.7 rides per service hour (page 7).
- Route 18 (serving E 2nd St, Walmart, and Sparks Industrial) had the second highest productivity with 26.5 rides per service hour.
- Route 4 (serving W 7th) came in third with 22.9.
- Route 11 ridership increased the most over last year by 66.5%. In May 2023, Routes 3 and 26 were eliminated with Route 11 absorbing parts of Routes 3 and 26.
- Route 16 (serving Idlewild) had the second highest increase in ridership at 30.1%.
- Route 56 (serving south meadows-Damonte Ranch) had the third highest increase in ridership at 29.1%.

RTC RAPID (Virginia & Lincoln Lines Combined)

- This month, there were 116,399 rides on RTC RAPID **up 10%** compared with last year. By comparison, system ridership was up 8.6%. Productivity of RTC RAPID at 24.4 rides per service hour was **up 13%** compared with last year. By comparison, system productivity was 19.6 rides per service hour, **up 9.2%** compared with last year.
- There were 1.41 million rides over the most recent 12 months, **up 23%** compared with the previous 12 months.
- RAPID rides now make up 26.3% of system ridership.
- 45.7% of all system rides were taken on RAPID and Routes 1 and 11.

RTC RAPID Virginia Line

- This month, there were 80,554 rides on the Virginia Line **up 12%** compared with last year. Productivity at 24.9 rides per service hour is **up 15%** compared with last year.
- Ridership for both the Virginia Line and Route 1 was 115,379 **up 5.2%** compared with last year (page 14). There were 1.37 million rides over the most recent 12 months, **up 12%** compared with the previous 12 months.

RTC RAPID Lincoln Line

- This month, there were 35,845 rides on the Lincoln Line **up 6%** compared with last year. Productivity at 23.5 rides per service hour is **up 8%** compared with last year.
- Ridership for both the Lincoln Line and Route 11 was 86,512 **up 34%** compared with last year (page 16). There were 958K rides for the most recent 12 months, **up 28%** compared with the previous 12 months.

RTC REGIONAL CONNECTOR Carson Line

- There were 1,567 rides this month, **down 10%** compared with last March (page 18). At 5.6 rides per service hour, productivity is **up 1%** compared with last year. There were 19,760 rides for the most recent 12 months, **up 13%** compared with the previous 12 months.

RTC TMCC and UNR Education Pass

- There were 10,309 UNR Ed-Pass rides, **up 27%** compared with last year (page 20). **This is the highest March ridership ever for any UNR pass program.**
- There were 7,569 TMCC Ed-Pass rides, **up 80%** compared with last year.

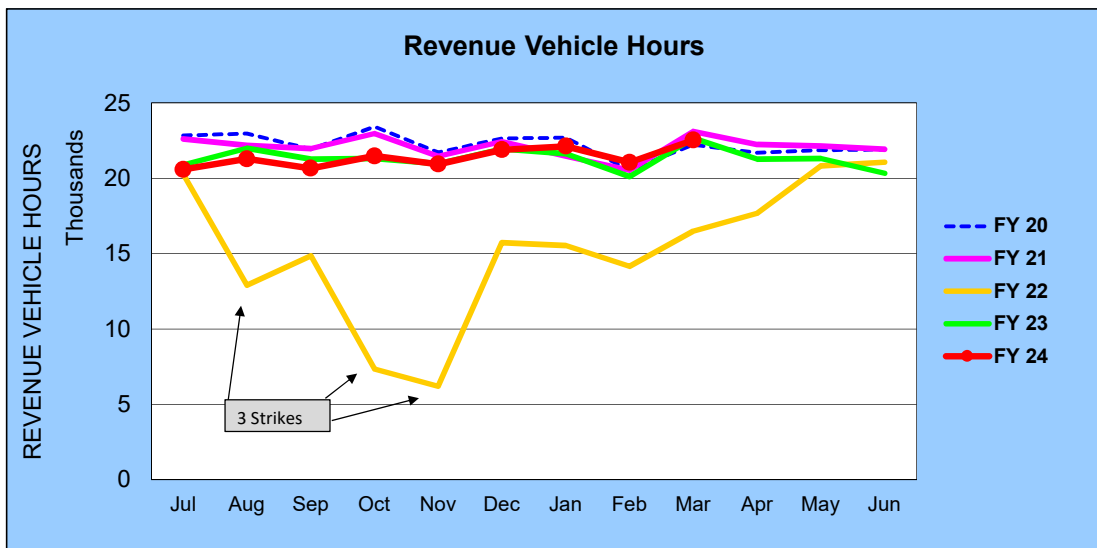
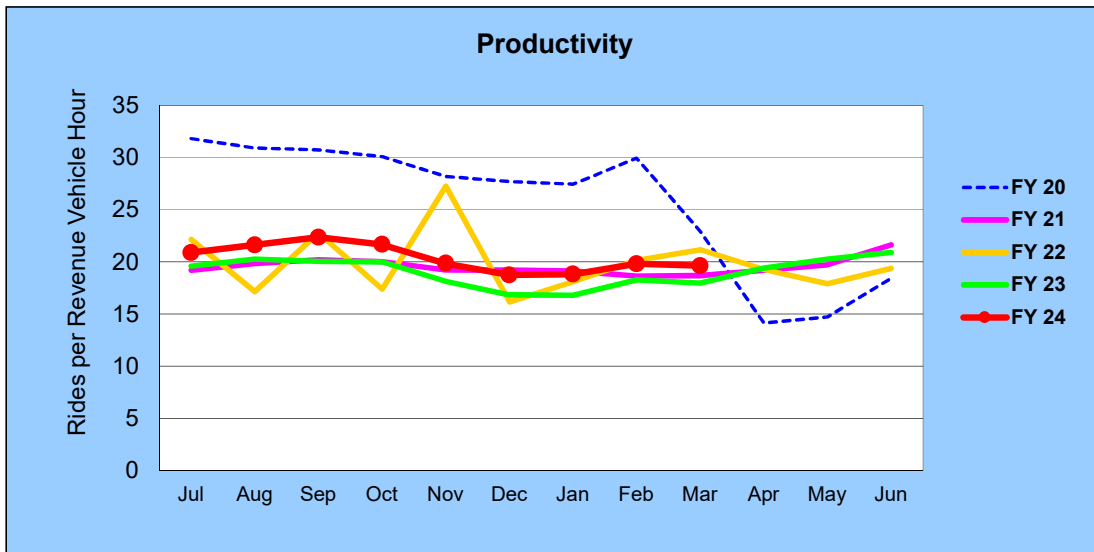
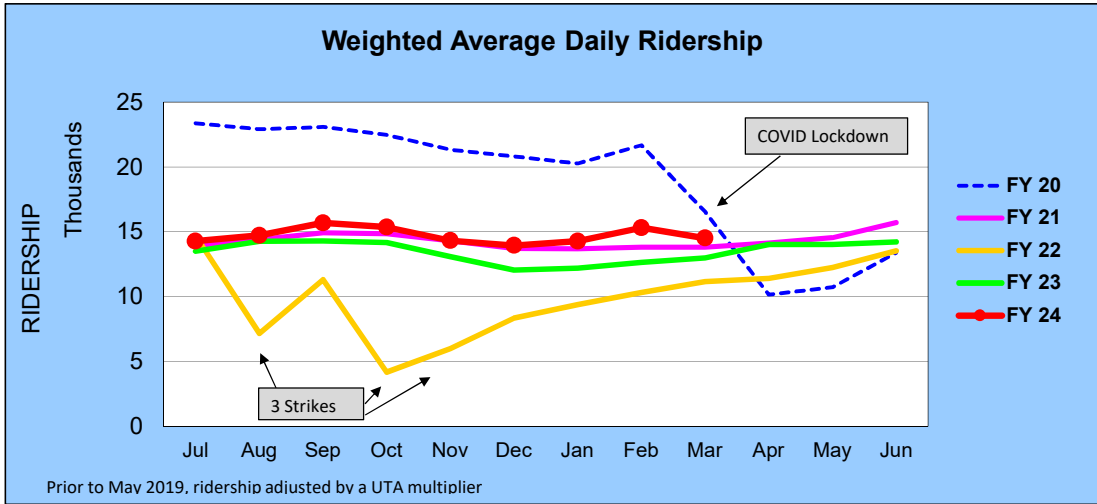
RTC Transit Operating Statistics

RTC Transit Fixed Route Bus						
Rolling 12-Month Ridership Comparison						
Most Recent 12 Months			Percent Change	Previous 12 Months		
Month	Year	Ridership		Month	Year	Ridership
Apr		412,674	21%	Apr		340,721
May		432,170	16%	May		372,742
Jun		425,106	4.2%	Jun		408,079
Jul		429,718	4.9%	Jul		409,457
Aug		460,384	3.2%	Aug		445,976
Sep		461,670	8.2%	Sep		426,698
Oct		465,243	9.2%	Oct		426,167
Nov		415,646	9.4%	Nov		380,081
Dec		410,240	11.0%	Dec		369,598
Jan	2024	416,157	14.6%	Jan	2023	363,174
Feb		417,018	13.5%	Feb		367,575
March		442,102	8.6%	March		407,074
TOTAL		5,188,128	10%	TOTAL		4,717,342

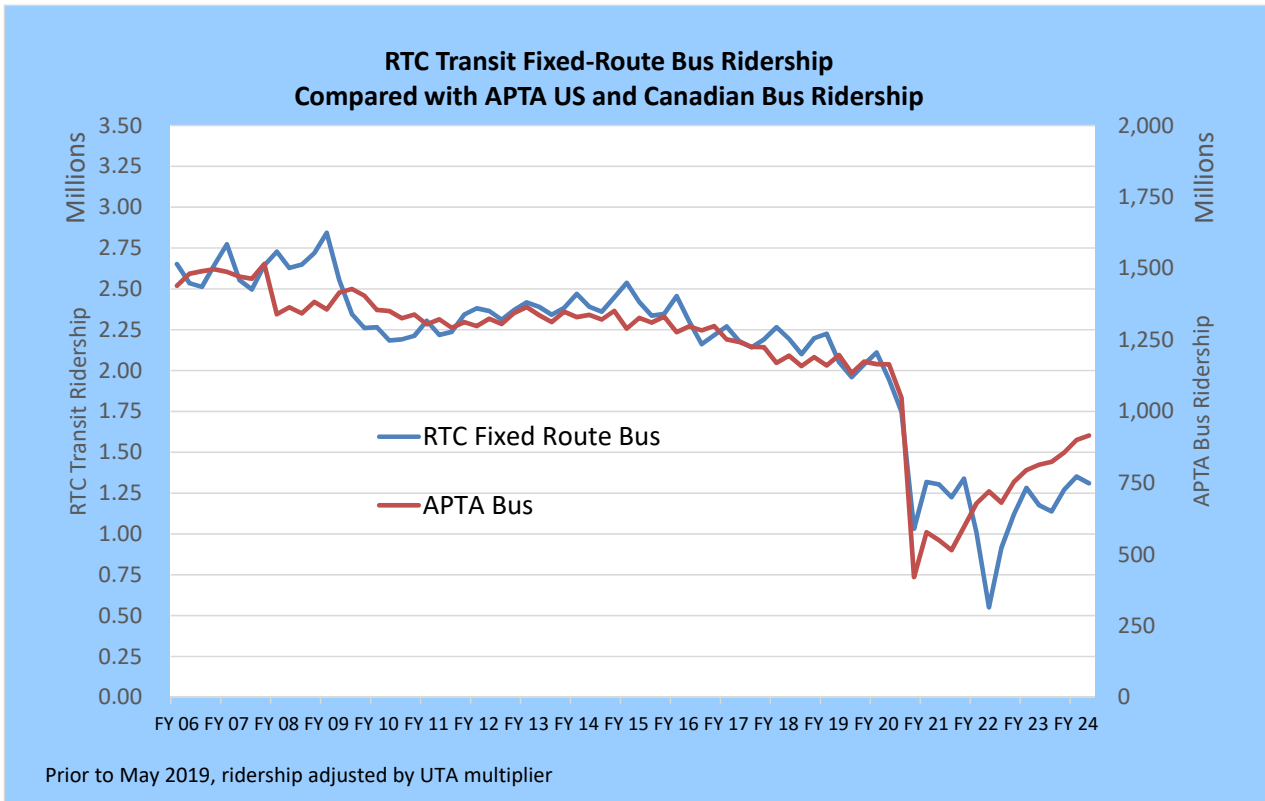
RTC Transit includes RTC RIDE, RTC RAPID, & RTC REGIONAL CONNECTOR

RTC Transit Fixed Route Bus

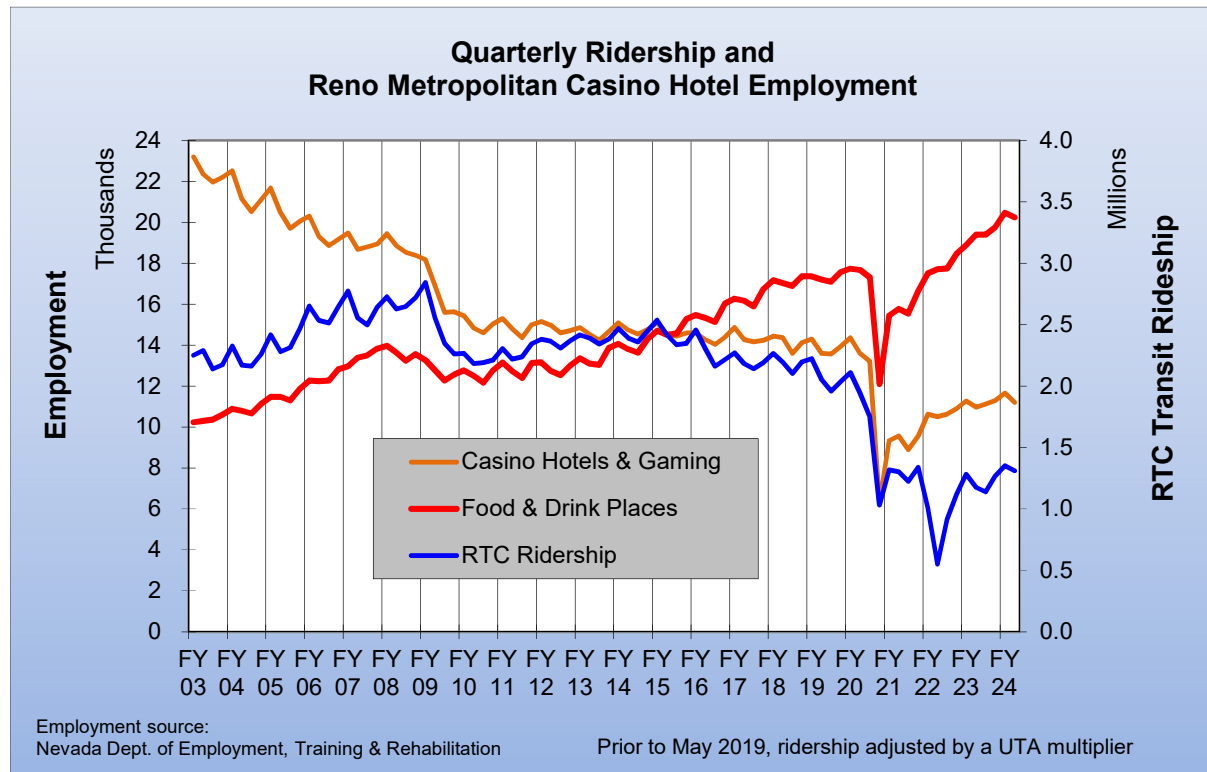
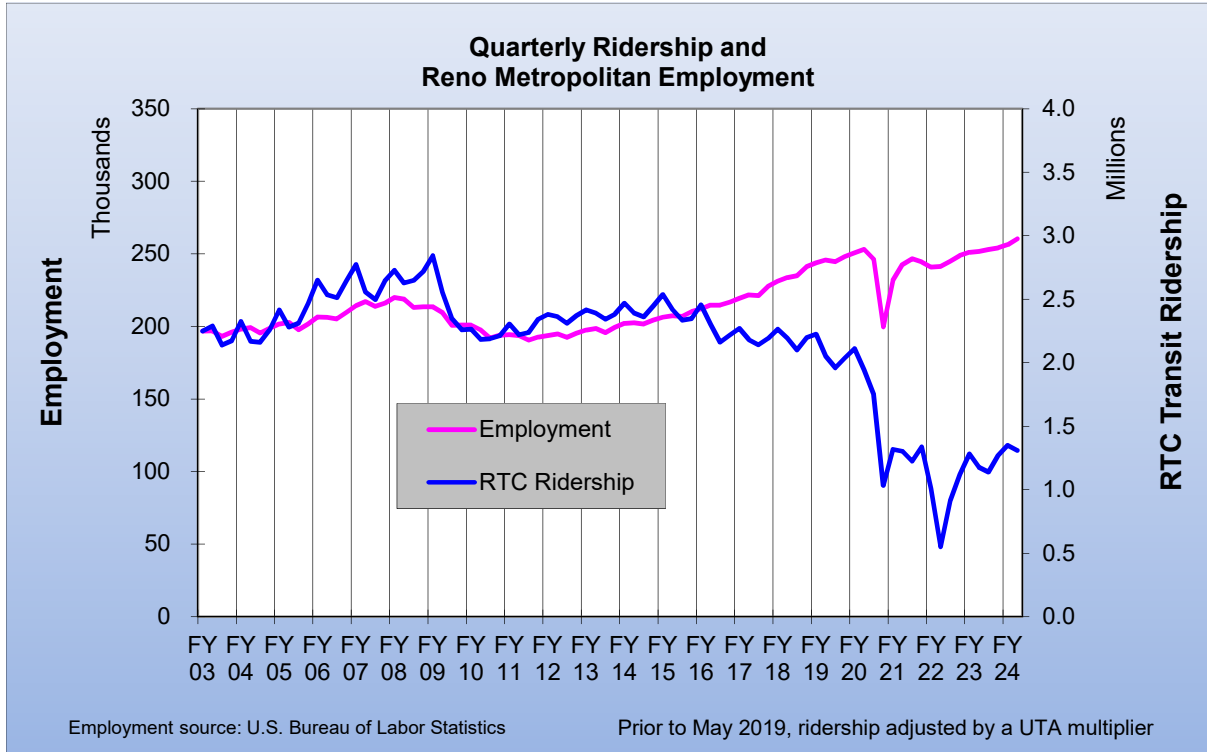
FISCAL YEAR COMPARISONS



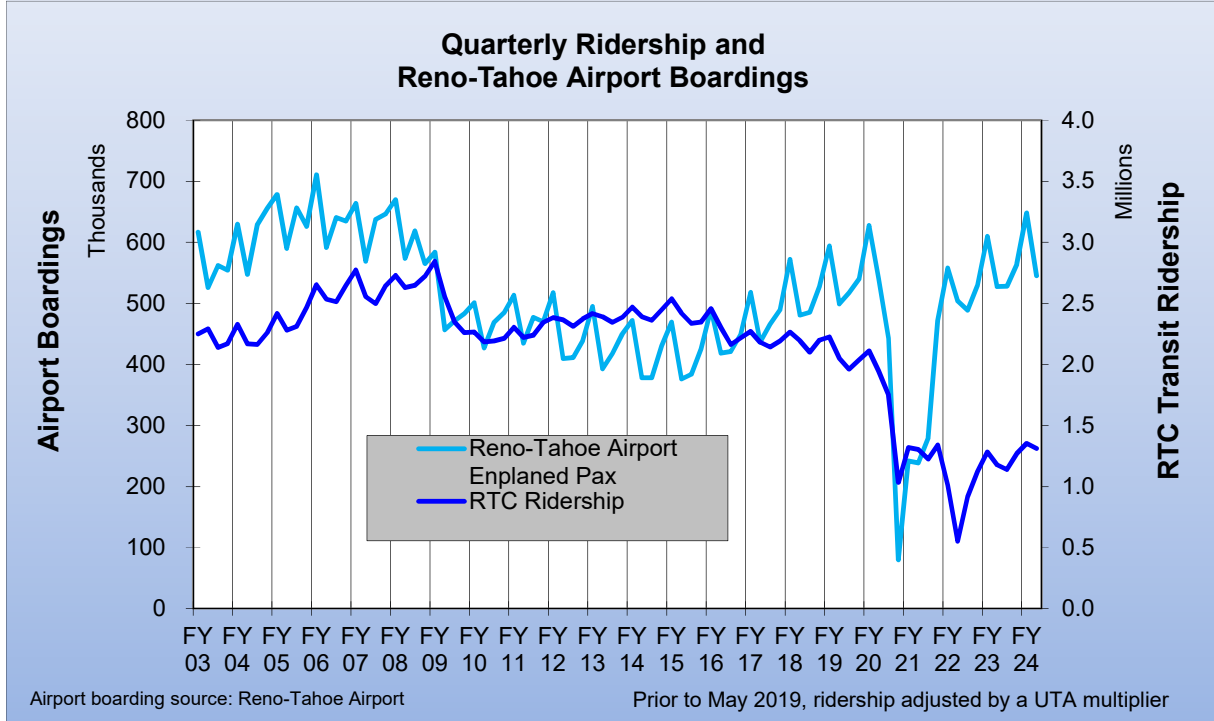
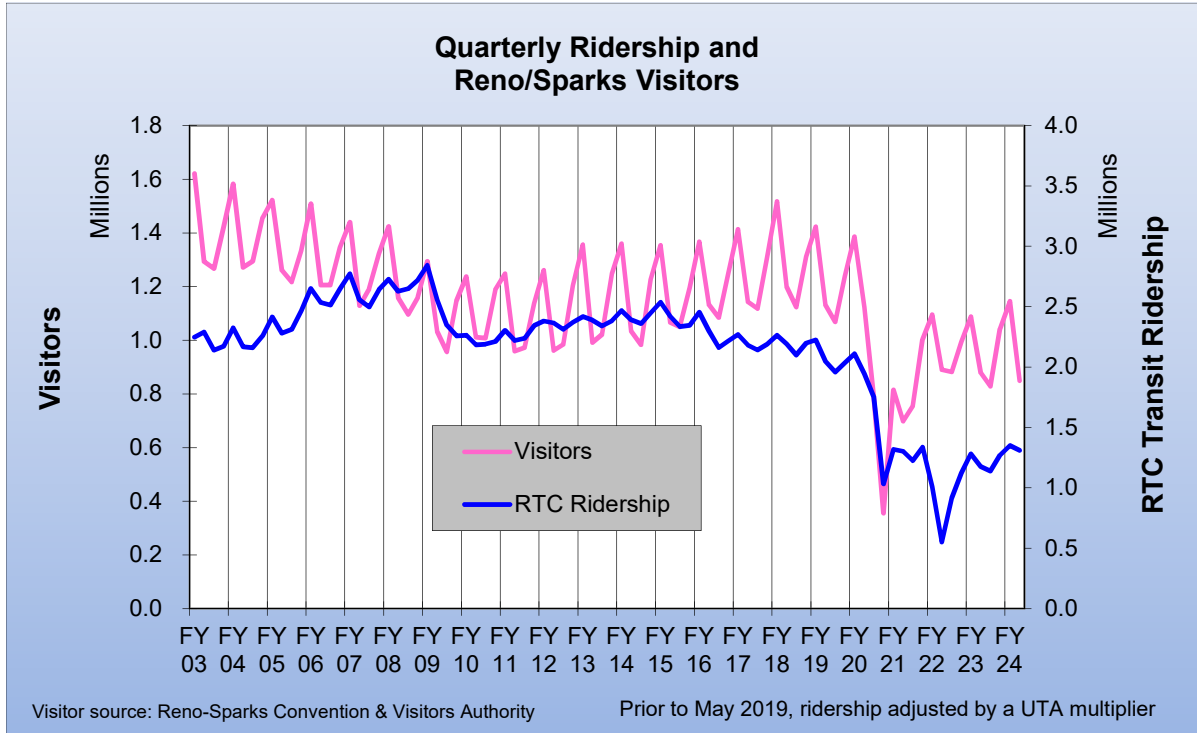
RTC Transit Fixed-Route Bus						
Weighted Average Daily Ridership Rolling 12-Month Ridership Comparison						
Most Recent 12 Months			Percent Change	Previous 12 Months		
Month	Year	Ridership		Month	Year	Ridership
Apr		14,016	23%	Apr		11,395
May		14,008	14%	May		12,245
Jun		14,227	5.3%	Jun		13,514
Jul		14,257	5.5%	Jul		13,510
Aug		14,698	3.1%	Aug		14,259
Sep		15,675	9.7%	Sep		14,286
Oct		15,353	8.4%	Oct		14,157
Nov		14,320	9.4%	Nov		13,086
Dec		13,931	15.6%	Dec		12,049
Jan	2024	14,262	17.1%	Jan	2023	12,184
Feb		15,294	21.0%	Feb		12,638
March		14,500	11.7%	March		12,981
TOTAL		174,541	12%	TOTAL		156,304



RTC Transit Fixed-Route Bus



RTC Transit Fixed-Route Bus



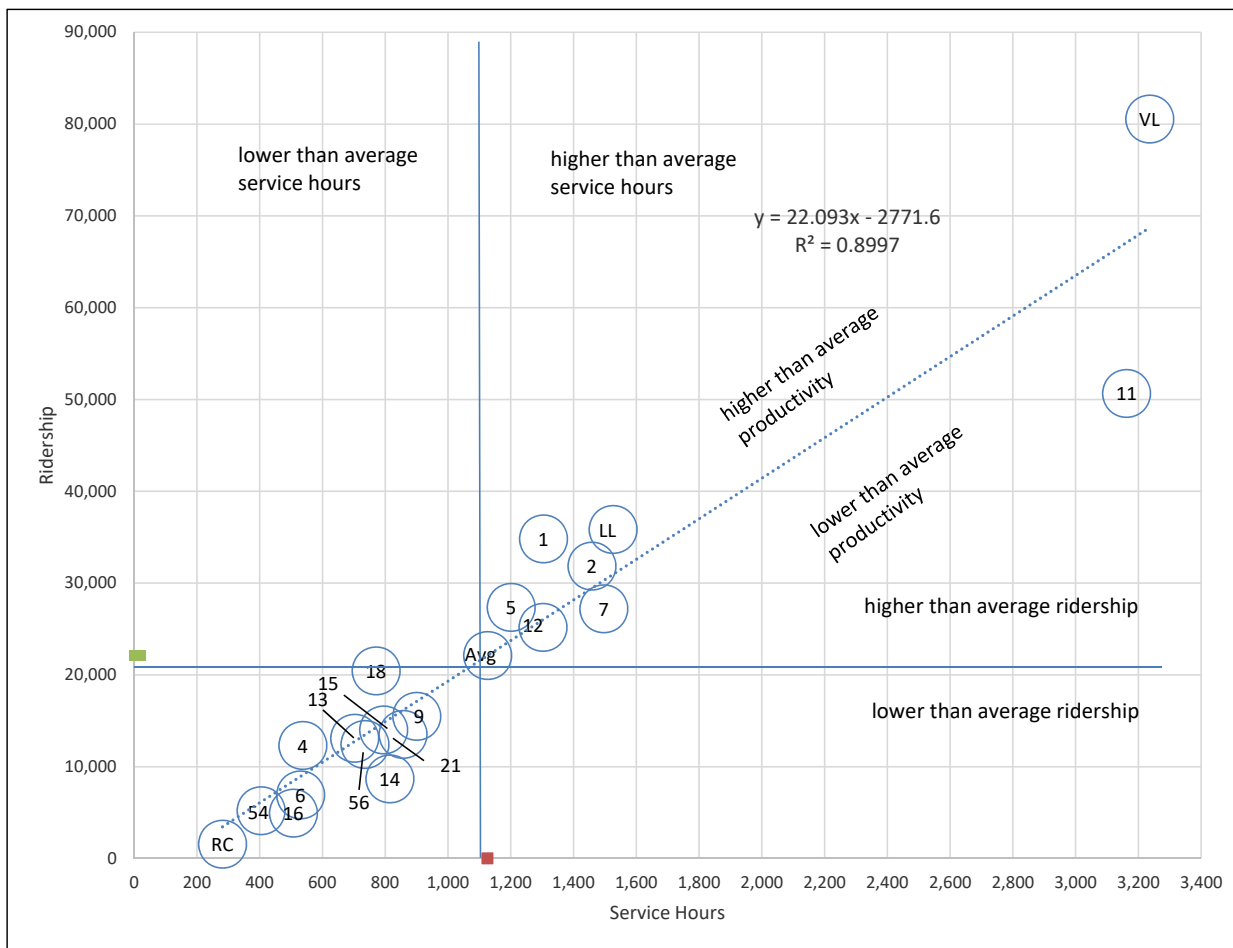
RTC Route Comparison Report

Mar2024

Route *	Productivity	Route	Svs Hours Change Fr. Last Year	Route	Ridership	Route	Ridership Change From Last Year
1	26.7	11	176.1%	RAP VL	80,554	11	66.5%
18	26.5	21	31.9%	11	50,667	16	30.1%
RAP VL	24.9	16	28.0%	RAP LL	35,845	56	29.1%
RAP LL	23.5	14	14.8%	1	34,825	14	25.5%
4	22.9	56	11.4%	2	31,848	15	25.2%
5	22.8	6	8.4%	5	27,352	4	23.4%
2	21.8	TOTAL	-0.6%	7	27,202	21	23.3%
TOTAL	19.6	RAP LL	-2.0%	12	25,181	6	20.4%
12	19.3	13	-2.3%	18	20,437	13	20.3%
13	18.6	RAP VL	-2.3%	9	15,488	9	18.3%
7	18.2	4	-2.7%	15	14,012	2	17.2%
15	17.6	15	-3.8%	21	13,522	RAP VL	12.3%
9	17.2	2	-5.8%	13	13,099	TOTAL	8.6%
56	16.9	5	-5.8%	56	12,419	12	6.2%
11	16.0	12	-7.8%	4	12,310	RAP LL	5.6%
21	15.8	7	-10.1%	14	8,683	7	5.2%
6	13.1	RTC RC	-10.7%	6	6,941	5	4.5%
54	12.9	18	-15.8%	54	5,207	18	-3.4%
14	10.7	1	-16.1%	16	4,943	54	-6.0%
16	9.8	9	-20.1%	RTC RC	1,567	1	-8.1%
RTC RC	5.6	54	-22.0%	TOTAL	442,102	RTC RC	-10.1%

* - RTC RC is RTC REGIONAL CONNECTOR.

RTC Route Comparison Chart Mar2024



"higher" and "lower" refer to higher or lower than the average of all routes (not the system average)

RTC TRANSIT OPERATING STATISTICS

Mar 2024

Route	Total Ridership	Previous Year	Change	Vehicle Revenue Hours	Previous Year	Change	Rides/VRH	Previous Year	Change
RAPID VL	80,554	71,756	12%	3,236	3,312	-2%	24.9	21.7	15%
RAPID LL	35,845	33,943	6%	1,526	1,557	-2%	23.5	21.8	8%
1	34,825	37,883	-8%	1,304	1,554	-16%	26.7	24.4	10%
2	31,848	27,168	17%	1,459	1,548	-6%	21.8	17.5	24%
3		10,487			560			18.7	
4	12,310	9,973	23%	537	552	-3%	22.9	18.1	27%
5	27,352	26,164	5%	1,201	1,275	-6%	22.8	20.5	11%
6	6,941	5,767	20%	530	489	8%	13.1	11.8	11%
7	27,202	25,848	5%	1,496	1,665	-10%	18.2	15.5	17%
9	15,488	13,097	18%	900	1,127	-20%	17.2	11.6	48%
11	50,667	30,427	67%	3,162	1,145	176%	16.0	26.6	-40%
12	25,181	23,712	6%	1,302	1,413	-8%	19.3	16.8	15%
13	13,099	10,889	20%	702	719	-2%	18.6	15.1	23%
14	8,683	6,917	26%	814	709	15%	10.7	9.8	9%
15	14,012	11,194	25%	795	826	-4%	17.6	13.6	30%
16	4,943	3,799	30%	507	396	28%	9.8	9.6	2%
18	20,437	21,146	-3%	771	915	-16%	26.5	23.1	15%
21	13,522	10,965	23%	856	649	32%	15.8	16.9	-6%
26		9,035			746			12.1	
54	5,207	5,541	-6%	404	519	-22%	12.9	10.7	21%
56	12,419	9,620	29%	735	660	11%	16.9	14.6	16%
RC Carson	1,567	1,743	-10%	281	315	-11%	5.6	5.5	1%
Misc. Service		0	N/A		0	N/A			
Mar '24	442,102	407,074	8.6%	22,520	22,651	-0.6%	19.6	18.0	9.2%
Mar '23	407,074			22,651			18.0		
Perc. Change	8.6%			-0.6%			9%		

RTC TRANSIT OPERATING STATISTICS

Mar 2024

Route	Vehicle Revenue Miles	Rides/VRM	Est. Gross Operating Cost	Est. Cost Per VRH	Est. Cost Per VRM	Est. Cost Per Ride
RAPID VL	30,131	2.67	\$510,824	\$158	\$16.95	\$6.34
RAPID LL	14,719	2.44	\$240,888	\$158	\$16.37	\$6.72
1	12,891	2.70	\$205,861	\$158	\$15.97	\$5.91
2	15,293	2.08	\$230,259	\$158	\$15.06	\$7.23
3						
4	6,962	1.77	\$84,804	\$158	\$12.18	\$6.89
5	16,068	1.70	\$189,627	\$158	\$11.80	\$6.93
6	4,910	1.41	\$83,667	\$158	\$17.04	\$12.05
7	26,527	1.03	\$236,213	\$158	\$8.90	\$8.68
9	10,139	1.53	\$142,093	\$158	\$14.02	\$9.17
11	30,831	1.64	\$499,197	\$158	\$16.19	\$9.85
12	13,170	1.91	\$205,606	\$158	\$15.61	\$8.17
13	6,371	2.06	\$110,886	\$158	\$17.40	\$8.47
14	7,847	1.11	\$128,560	\$158	\$16.38	\$14.81
15	8,184	1.71	\$125,472	\$158	\$15.33	\$8.95
16	3,510	1.41	\$80,024	\$158	\$22.80	\$16.19
18	8,374	2.44	\$121,633	\$158	\$14.52	\$5.95
21	9,393	1.44	\$135,175	\$158	\$14.39	\$10.00
26						
54	6,492	0.80	\$63,832	\$158	\$9.83	\$12.26
56	10,836	1.15	\$116,074	\$158	\$10.71	\$9.35
RC Carson	8,457	0.19	\$44,423	\$158	\$5.25	\$28.35
Misc. Service	0					
Mar '24	251,106	1.76	\$3,555,118	\$158	\$14.16	\$8.04
Mar '23	240,830	1.69	\$3,341,667	\$148	\$13.88	\$8.21
Perc. Change	4.3%	4%	6.4%	7.0%	2.0%	-2%

RTC Transit Operating Statistics

Apr '23 - Mar '24

Route	Total Ridership	Previous Year	Change	Vehicle Revenue Hours	Previous Year	Change	Rides/VRH	Previous Year	Change
RAPID VL	955,312	771,981	24%	37,200	37,496	-1%	25.7	20.6	25%
RAPID LL	450,429	373,441	21%	17,715	18,593	-5%	25.4	20.1	27%
1	419,398	457,156	-8%	15,667	17,706	-12%	26.8	25.8	4%
2	372,649	325,634	14%	17,176	16,807	2%	21.7	19.4	12%
2s									
3	12,437	135,508		627	6,347				
3CC									
4	145,146	124,552	17%	6,397	6,308	1%	22.7	19.7	15%
5	336,490	287,072	17%	14,151	13,458	5%	23.8	21.3	11%
6	81,204	72,133	13%	6,195	5,646	10%	13.1	12.8	3%
7	325,514	311,101	5%	18,189	19,030	-4%	17.9	16.3	9%
9	173,546	121,907	42%	10,860	11,852	-8%	16.0	10.3	55%
11	507,722	373,869	36%	28,717	12,972	121%	17.7	28.8	-39%
12	286,430	260,078	10%	13,898	15,300	-9%	20.6	17.0	21%
13	151,853	128,812	18%	8,139	7,779	5%	18.7	16.6	13%
14	103,017	92,581	11%	9,439	7,861	20%	10.9	11.8	-7%
15	162,448	151,454	7%	9,282	9,520	-3%	17.5	15.9	10%
16	53,892	51,725	4%	5,818	4,458	31%	9.3	11.6	-20%
18	252,746	252,595	0%	9,188	9,812	-6%	27.5	25.7	7%
19									
21	161,682	121,498	33%	9,789	7,143	37%	16.5	17.0	-3%
26	10,202	105,617	-90%	824	7,785	-89%	12.4	13.6	-9%
54	67,521	67,549	0%	4,881	5,766	-15%	13.8	11.7	18%
56	138,730	113,591	22%	7,946	7,254	10%	17.5	15.7	12%
RC Carson	19,760	17,488	13%	3,293	3,406	-3%	6.0	5.1	17%
Misc. Service									
Current 12 Months	5,188,128	4,717,342	10%	255,392	252,299	1.2%	20.3	18.7	8.6%
Previous 12 Months	4,717,342			252,299			18.7		
Perc. Change	10%			1.2%			8.6%		

RTC Transit Operating Statistics

Apr '23 - Mar '24

Route	Vehicle Revenue Miles (thousand)	Rides/VRM	Est. Gross Operating Cost (thousand)	Est. Cost Per VRH	Est. Cost Per VRM	Est. Cost Per Ride
RAPID VL	345.9	2.76	\$5,774	\$155	\$16.69	\$6.04
RAPID LL	171.2	2.63	\$2,750	\$155	\$16.06	\$6.11
1	151.9	2.76	\$2,431	\$155	\$16.00	\$5.80
2	179.2	2.08	\$2,666	\$155	\$14.88	\$7.16
2s						
3	7.5		\$93			
3CC						
4	82.0	1.77	\$993	\$155	\$12.11	\$6.84
5	196.8	1.71	\$2,197	\$155	\$11.16	\$6.53
6	57.7	1.41	\$962	\$155	\$16.67	\$11.85
7	310.2	1.05	\$2,822	\$155	\$9.10	\$8.67
9	119.8	1.45	\$1,685	\$155	\$14.06	\$9.71
11	316.8	1.60	\$4,484	\$156	\$14.16	\$8.83
12	154.3	1.86	\$2,160	\$155	\$14.00	\$7.54
13	74.6	2.04	\$1,264	\$155	\$16.95	\$8.32
14	91.3	1.13	\$1,467	\$155	\$16.06	\$14.24
15	96.3	1.69	\$1,441	\$155	\$14.97	\$8.87
16	38.3	1.41	\$905	\$155	\$23.63	\$16.78
18	98.5	2.56	\$1,426	\$155	\$14.47	\$5.64
19						
21	107.5	1.50	\$1,522	\$155	\$14.16	\$9.41
26	8.7	1.18	\$122	\$148	\$14.06	\$11.92
54	76.3	0.88	\$757	\$155	\$9.92	\$11.21
56	116.0	1.20	\$1,236	\$156	\$10.65	\$8.91
RC Carson	99.4	0.20	\$511	\$155	\$5.14	\$25.87
Misc. Service						
Current 12 Months	2,900.1	1.79	\$39,667	\$155	\$13.68	\$7.65
Previous 12 Months	2,697.4	1.75	\$36,796	\$146	\$13.64	\$7.80
Perc. Change	7.5%	2.3%	7.8%	6.5%	0.3%	-2.0%

March

April 2023 - March2024

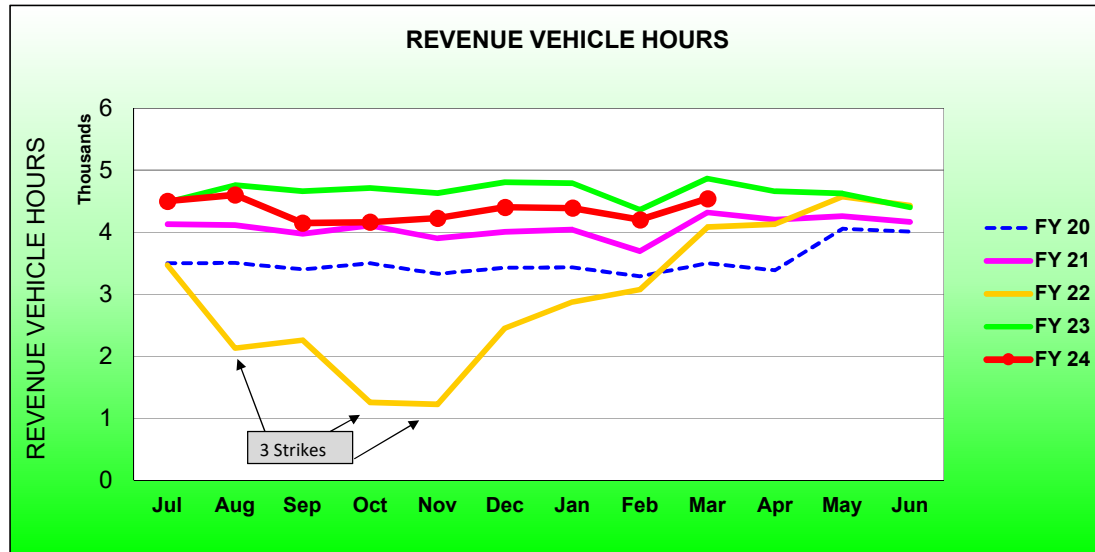
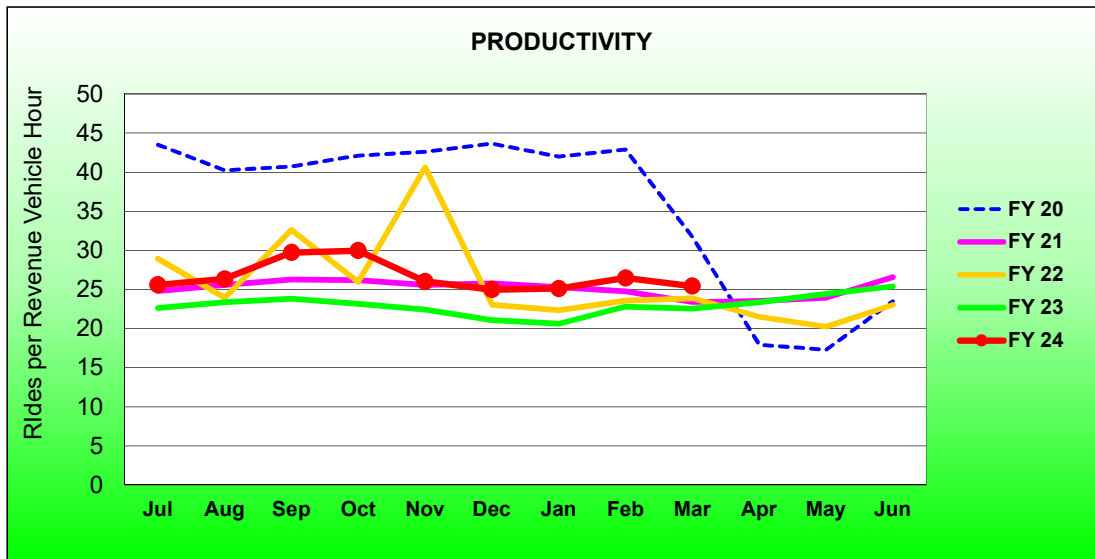
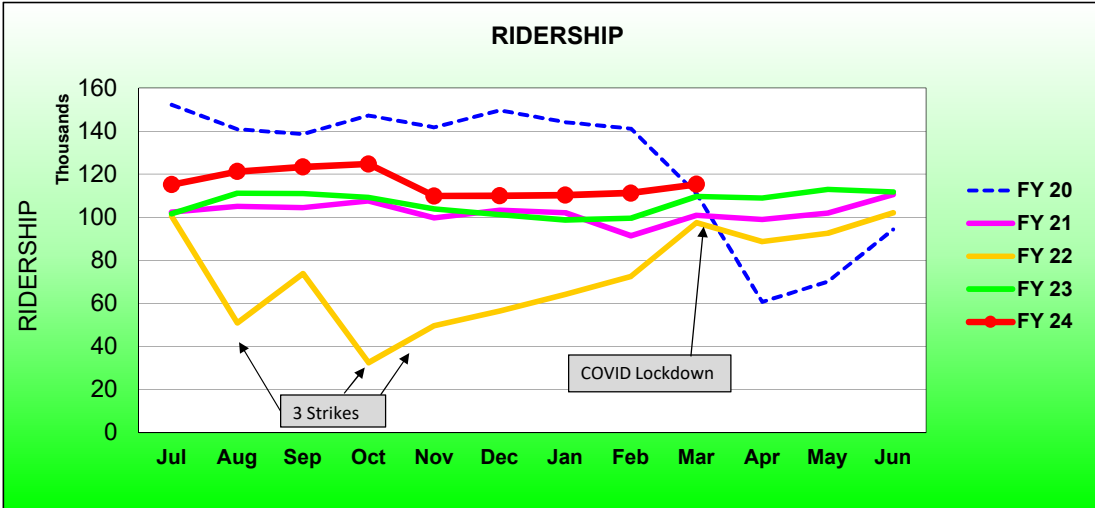
	2024	2023	Percent Change	Current 12 Months	Previous 12 Month	Percent Change
Single Ride Cash						
Full Fare	3,849	5,153	-25%	58,468	67,829	-14%
Reduced*	5,693	7,509	-24%	83,463	102,811	-19%
RTC ACCESS ID	405	352	15.1%	4,151	4,920	-16%
Total	9,947	13,014	-24%	146,082	175,560	-17%
Day Pass Cash						
Full Fare	56,674	60,947	-7%	682,118	777,704	-12.3%
Reduced*	65,870	70,060	-6.0%	825,604	896,411	-7.9%
Total	122,544	131,007	-6.5%	1,507,722	1,674,115	-9.9%
Pre-Purchase Period Pass						
Full Fare	115,917	95,683	21%	1,321,001	1,062,232	24%
Reduced*	144,587	121,224	19%	1,605,176	1,300,051	23%
Total	260,504	216,907	20%	2,926,177	2,362,283	24%
Transfers	233	309	-25%	1,850	2,890	-36%
Flow Through	4,929	4,909	0%	62,462	59,501	5%
Free Rides	22,552	24,742	-9%	311,127	264,002	18%
U/Ed-Pass Free Rides	17,878	13,208	35%	195,406	140,761	39%
Stored Ride Pass	3,516	2,978	18.1%	37,297	38,230	-2.4%
Full Fare	190,229	176,375	7.9%	2,245,560	2,070,354	8%
Reduced*	251,693	230,581	9%	2,941,085	2,645,466	11%
Total Ridership	442,102	407,074	8.6%	5,188,128	4,717,342	10%
Previous 12 Months	407,074			4,717,342		
Change	8.6%			10%		
Vehicle Revenue Hours	22,520	22,651	-0.6%	255,392	252,299	1.2%
Previous 12 Months	22,651			252,299		
Change	-0.6%			1%		
Rides / VRH	19.6	18.0	9.2%	20.3	18.7	8.6%
Previous 12 Months	18.0			18.7		
Change	9%			8.6%		
Vehicle Revenue Miles	251,106	240,830	4.3%	2,900,086	2,697,358	7.5%
Rides / VRM	1.76	1.69	4.2%	1.79	1.75	2.3%
Est. Gross Operating Cost	\$3,555,118	\$3,341,667	6.4%	\$39,667,044	\$36,795,593	7.8%
Est. Cost Per VRH	\$157.86	\$147.53	7.0%	\$155.32	\$145.84	6.5%
Est. Cost Per VRM	\$14.16	\$13.88	2.0%	\$13.68	\$13.64	0.3%
Est. Cost Per Ride	\$8.04	\$8.21	-2.0%	\$7.65	\$7.80	-2.0%

* - Reduced fare includes Youth, Senior, Disabled, and US Veterans

RTC RAPID Virginia Line and Route 1						
ROLLING 12-MONTH COMPARISON						
Most Recent 12 Months			Percent Change	Previous 12 Months		
Month	Year	Ridership		Month	Year	Ridership
Apr		108,968	23%	Apr		88,653
May		112,931	22%	May		92,578
Jun		111,746	10%	Jun		102,048
Jul		115,149	13%	Jul		101,575
Aug		121,197	9.1%	Aug		111,109
Sep		123,298	11%	Sep		111,004
Oct		124,715	14%	Oct		109,180
Nov		109,893	5.8%	Nov		103,868
Dec		109,966	8.6%	Dec		101,252
Jan	2024	110,229	11.6%	Jan	2023	98,740
Feb		111,239	11.8%	Feb		99,491
March		115,379	5.2%	March		109,639
TOTAL		1,374,710	12%	TOTAL		1,229,137

* - Strikes occurred Aug 3-13, Sep 27-Oct 20, Nov 9-Dec 3, 2021

RTC RAPID Virginia Line and Route 1 Fiscal Year Comparisons



RTC RAPID Lincoln Line and Route 11						
Rolling 12-Month Comparison						
Most Recent 12 Months			Percent Change	Previous 12 Months		
Month	Year	Ridership		Month	Year	Ridership
Apr		63,439	14%	Apr		55,689
May		74,197	25%	May		59,313
Jun		76,479	19%	Jun		64,189
Jul		81,268	27%	Jul		64,207
Aug		85,588	26%	Aug		67,878
Sep		86,016	24%	Sep		69,592
Oct		86,638	30%	Oct		66,800
Nov		76,791	32%	Nov		58,346
Dec		77,855	30%	Dec		59,985
Jan	2024	82,348	37%	Jan	2023	60,272
Feb		81,020	43%	Feb		56,669
March		86,512	34%	March		64,370
TOTAL		958,151	28%	TOTAL		747,310

RTC Transit Operating Statistics

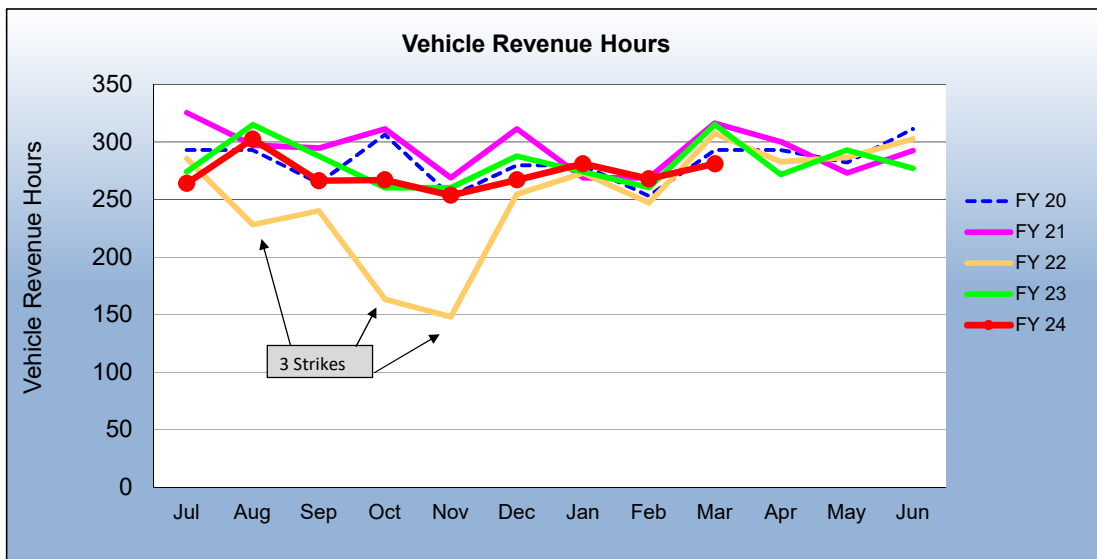
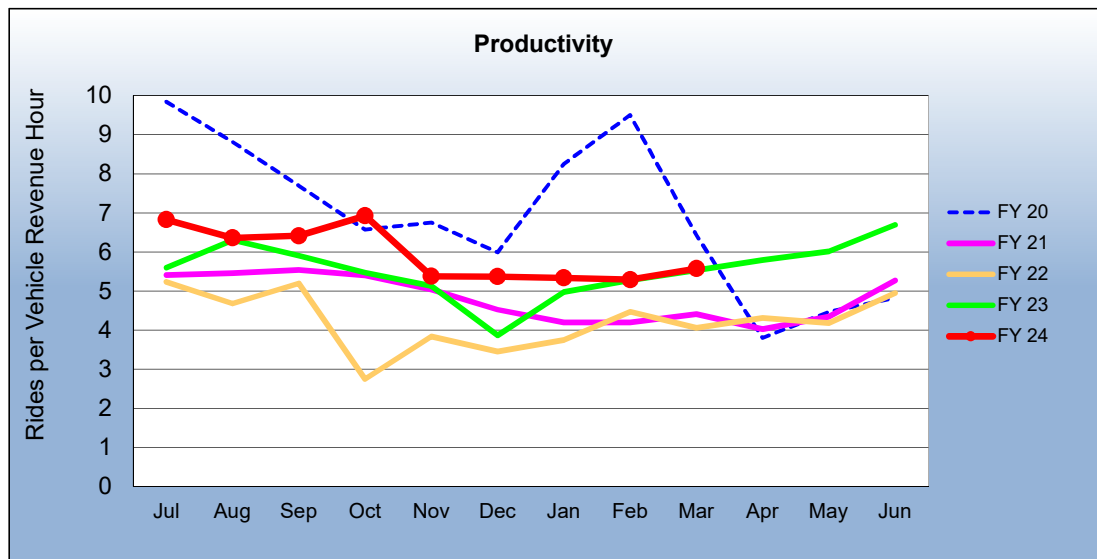
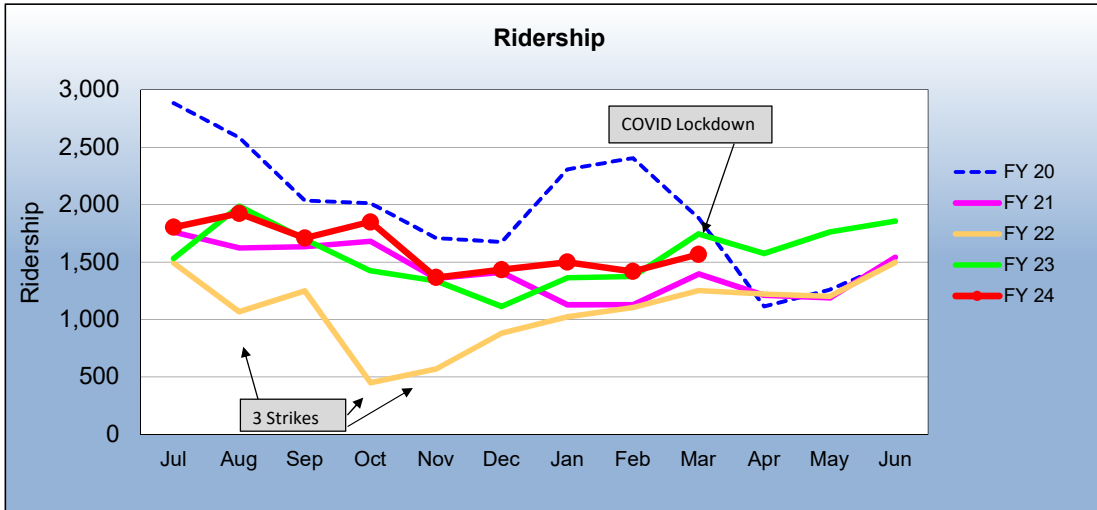
RTC RAPID Virginia & Lincoln Lines						
ROLLING 12-MONTH COMPARISON						
Most Recent 12 Months			Percent Change	Previous 12 Months		
Month	Year	Ridership		Month	Year	Ridership
Apr		105,548	44%	Apr		73,521
May		116,256	40%	May		82,872
Jun		116,866	26%	Jun		92,419
Jul		120,564	27%	Jul		94,642
Aug		128,312	22%	Aug		104,983
Sep		127,255	20%	Sep		105,807
Oct		127,380	25%	Oct		101,939
Nov		111,741	14%	Nov		98,227
Dec		112,141	18%	Dec		94,884
Jan	2024	111,384	17%	Jan	2023	94,823
Feb		111,895	17%	Feb		95,606
March		116,399	10%	March		105,699
TOTAL		1,405,741	23%	TOTAL		1,145,422

* - Strikes occurred Aug 3-13, Sep 27-Oct 20, Nov 9-Dec 3, 2021

RTC REGIONAL CONNECTOR - Carson Line						
Rolling 12 Month Comparison						
Most Recent 12 Months			Percent Change	Previous 12 Months		
Month	Year	Ridership		Month	Year	Ridership
Apr		1,575	29%	Apr		1,220
May		1,762	47%	May		1,200
Jun		1,855	24%	Jun		1,499
Jul		1,802	17%	Jul		1,534
Aug		1,924	-3.1%	Aug		1,985
Sep		1,708	0.6%	Sep		1,697
Oct		1,849	30%	Oct		1,424
Nov		1,365	2.2%	Nov		1,335
Dec		1,434	28.8%	Dec		1,113
Jan	2024	1,500	10.0%	Jan	2023	1,364
Feb		1,419	3.0%	Feb		1,374
March		1,567	-10.0%	March		1,743
TOTAL		19,760	13%	TOTAL		17,488

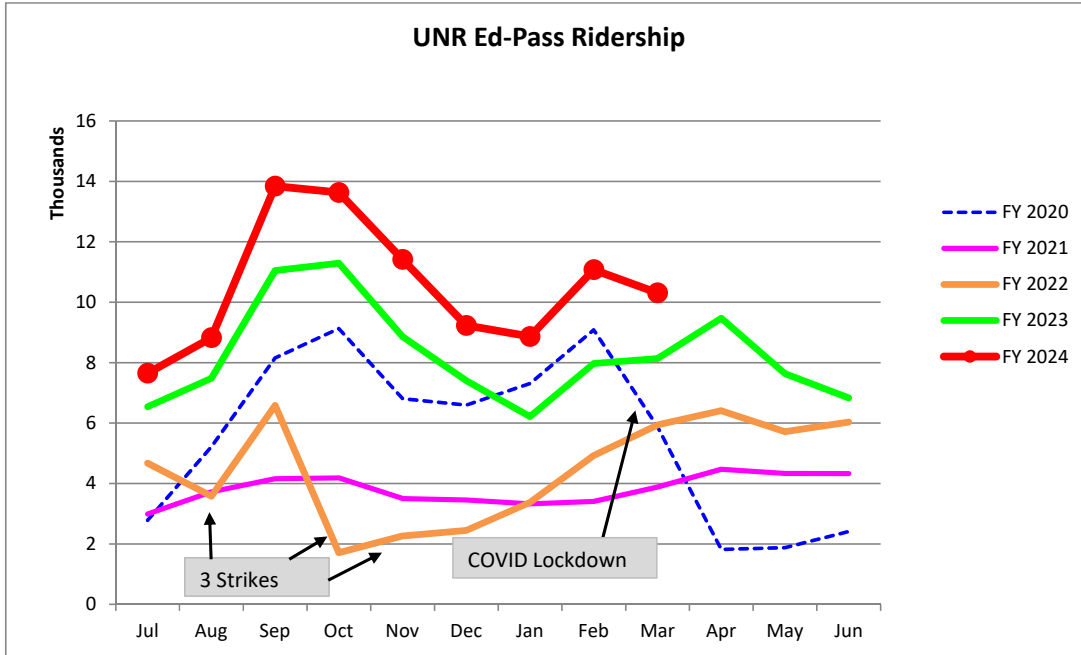
* - Strikes occurred Aug 3-13, Sep 27-Oct 20, Nov 9-Dec 3, 2021

RTC REGIONAL CONNECTOR Carson Line Fiscal Year Comparisons



**RTC Transit Fixed Route Bus Ridership Report
University of Nevada, Reno Ed-Pass Program
FY 2024**

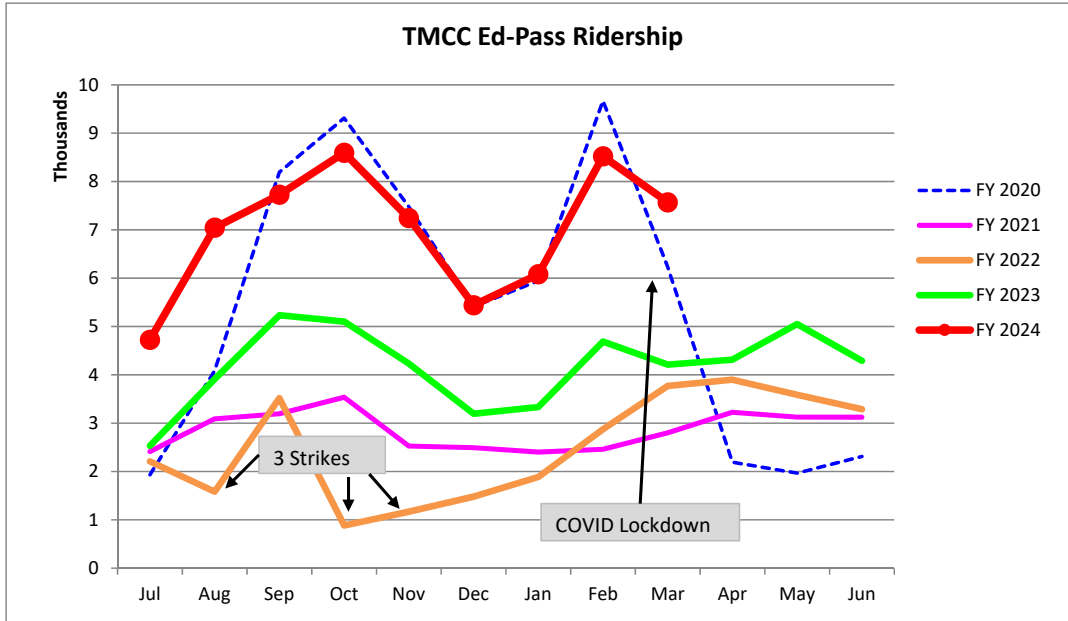
Category	Jul	Aug	Sep	Oct	Nov	Dec	Jan	Feb	Mar	Apr	May	Jun	FYTD
FY 2020	2,779	5,218	8,159	9,127	6,808	6,592	7,312	9,084	5,873	1,818	1,877	2,410	67,057
FY 2021	2,991	3,723	4,156	4,185	3,502	3,455	3,329	3,409	3,881	4,471	4,333	4,330	45,765
FY 2022	4,670	3,581	6,584	1,710	2,264	2,447	3,376	4,924	5,936	6,410	5,716	6,033	53,651
FY 2023	6,539	7,482	11,046	11,291	8,857	7,399	6,215	7,973	8,138	9,470	7,640	6,833	98,883
Percent Change	17%	18%	25%	21%	29%	25%	43%	39%	27%				
FY 2024	7,650	8,824	13,841	13,631	11,414	9,231	8,864	11,077	10,309				94,841



Fiscal Year	Rides
FY 2003	51,228
FY 2004	55,114
FY 2005	69,685
FY 2006	88,070
FY 2007	85,295
FY 2008	86,461
FY 2009	88,385
FY 2010	79,518
FY 2011	75,925
FY 2012	75,300
FY 2013	50,438
FY 2014	40,854
FY 2015	41,778
FY 2016	50,022
FY 2017	40,581
FY 2018	34,154
FY 2019	30,251
U-Pass:	
FY 2020	67,057
FY 2021	45,765
FY 2022	53,651
FY 2023	98,883

**RTC Transit Fixed Route Bus Ridership Report
Truckee Meadows Community Ed-Pass Program
FY 2024**

Category	Jul	Aug	Sep	Oct	Nov	Dec	Jan	Feb	Mar	Apr	May	Jun	FYTD
FY 2020	1,933	4,086	8,193	9,311	7,479	5,413	5,945	9,668	6,227	2,193	1,968	2,310	64,726
FY 2021	2,414	3,090	3,194	3,535	2,527	2,493	2,402	2,459	2,800	3,225	3,126	3,124	34,389
FY 2022	2,208	1,584	3,516	883	1,170	1,480	1,886	2,875	3,773	3,899	3,585	3,287	30,146
FY 2023	2,533	3,913	5,233	5,103	4,231	3,195	3,335	4,690	4,213	4,314	5,051	4,292	50,103
Percent Change	87%	80%	48%	68%	71%	70%	82%	82%	80%				
FY 2024	4,725	7,045	7,727	8,596	7,244	5,440	6,081	8,520	7,569				



Fiscal Year	Rides
FY 2013	90,583
FY 2014	113,700
FY 2015	94,112
FY 2016	83,375
FY 2017	66,110
FY 2018	53,027
FY 2019	37,191

Ed-Pass:	Rides
FY 2020	64,726
FY 2021	34,389
FY 2022	30,146
FY 2023	50,103