



REGIONAL TRANSPORTATION COMMISSION
Public Transportation • Streets and Highways • Planning



RTC Transit Fixed Route Bus Operating Statistics

**RTC RIDE
RTC RAPID
RTC REGIONAL CONNECTOR**

April 2024

RTC Transit Fixed Route Bus Operating Statistics Report

TABLE OF CONTENTS

RTC Transit Fixed Route Bus Highlights..... Page ii

RTC Transit Fixed Route Bus Summary Page iv

System Reports.....Page 1

Economic DataPage 5

Route Comparison Data.....Page 7

Monthly Operating Statistics.....Page 9

RTC RAPID Virginia Line & Route 1Page 14

RTC RAPID Lincoln Line & Route 11Page 16

RTC REGIONAL CONNECTOR Carson LinePage 18

RTC TMCC and UNR Education Pass.....Page 20

RTC Transit Fixed Route Bus Highlights

April 2024

RTC Transit Fixed Route Bus

- There was a service change effective January 6. Weekend schedules adjusted for Route 9. Weekday schedules adjusted for Route 16. Timing adjusted for Route 11. The 'Desert Skies' loop was removed for Route 5.
- For the month of April, there were 459,351 rides, **up 11.3%** compared with last year (page 1). Weighted average daily ridership was 15,129, **up 7.9%** compared with last year (page 3).
- For the most recent 12 months, there were 5.23 million rides **up 9.3%** compared with the previous 12 months.
- In April, there were 22,174 service hours, **up 4.3%** compared with last year (page 9).
- Productivity was 20.7 rides per service hour, **up 6.7%** compared with last year (page 9).

External Impacts on Ridership

- This month's weather was similar to last year. Both are six days of rain. The average temperature this month was 53.6° F, up 1.6° F compared with last year.
- The Reno-Sparks area preliminary unemployment rate in March was 4.2%. Unemployment has been gradually trending upward since a low of 2.8% in December 2021.
- Nevada's preliminary unemployment rate for March was 4.9%. The national unemployment rate for March was 3.8.

Historical Impacts Causing a Downward Trend in Bus Ridership

- According to Bureau of Labor Statistics, 27% of US employees worked remotely at least part of the time in 2023, with several academic surveys suggesting it is closer to 50%*.
- In April 2022, the City of Reno entered an agreement with Bird electric scooters to serve Reno.
- In 2021, Keolis transit workers went on strike August 3 to 13, September 27 to October 20, and November 9 to December 3. Limited service was provided on Routes 1, 7, and 11 and RTC REGIONAL CONNECTOR to Carson City. RTC provided free rides on RIDE, FlexRIDE, taxis, and UberX during the second and third strikes.
- A combination of the pandemic, stimulus checks, easy car financing, and gig jobs requiring cars has likely resulted in a large number of people abandoning transit for car ownership.
- In response to the COVID-19 pandemic, Governor Sisolak ordered the shutdown of casinos and other nonessential businesses in March 2020. In May 2020, Governor Sisolak reopened a number of businesses including bars, salons, gyms, and retail. Casinos were allowed to reopen in June 2020. In May 2021, maximum business capacity increased to 100% in Washoe County.
- There has been an increase in people working primarily from home, approximately eight million in 2018 according to US Census Bureau estimates, taking over transit as the second most common means of getting to work.
- While employment has increased in the region, the makeup of local employment has significantly changed. When Reno was a tourism and gaming town, a large portion of employment was in the low-wage, service industry whereas recently jobs tend to be higher wage and geographically dispersed requiring cars.
- Uber started permanent service in Reno in 2015 and Lyft started shortly after.
- As of 2014, Nevada provides driver's licenses for people who are undocumented immigrants.
- As downtown and midtown areas in-fill and gentrify, this also pushes lower income people to the suburbs where they are much more likely to need cars. This is a nationwide trend.
- The drop in ridership (before COVID) has been a nationwide trend as illustrated by the chart on page 4 which compares RTC transit ridership with US and Canadian bus ridership.
- With the growth of online shopping and food delivery, it is also likely that bus trips used for shopping and dining out has fallen substantially, especially for those with mobility challenges who would prefer online shopping and food delivery. Also, people without cars may decide to purchase a car with the intention of using the car to deliver food and finance the car.

* - <https://www.forbes.com/sites/forbesfinancecouncil/2023/11/06/changing-environment-altering-employer-obligations-for-remote-workers/?sh=7c9e531e2145>



RTC Transit Fixed Route Bus Summary

Route Ridership

- For April, Route 1 (serving S Virginia St between downtown Reno and Meadowood Mall) had the highest productivity in the system with 27.6 rides per service hour (page 7).
- Route 4 (serving W 7th) came in second with 24.9.
- Route 18 (serving E 2nd St, Walmart, and Sparks Industrial) had the third highest productivity with 24.3 rides per service hour.
- Route 11 ridership increased the most over last year by 86.3%. In May 2023, Routes 3 and 26 were eliminated with Route 11 absorbing parts of Routes 3 and 26.
- Route 56 (serving south meadows-Damonte Ranch) had the second highest increase in ridership at 41.2%.
- Route 16 (serving Idlewild) had the third highest increase in ridership at 40.8%.

RTC RAPID (Virginia & Lincoln Lines Combined)

- This month, there were 120,299 rides on RTC RAPID **up 14%** compared with last year. By comparison, system ridership was up 11.3%. The productivity of RTC RAPID at 25.7 rides per service hour was **up 13%** compared with last year. By comparison, system productivity was 20.7 rides per service hour, **up 6.7%** compared with last year.
- There were 1.42 million rides over the most recent 12 months, **up 21%** compared with the previous 12 months.
- RAPID rides now make up 26.2% of system ridership.
- 45.4% of all system rides were taken on RAPID and Routes 1 and 11.

RTC RAPID Virginia Line

- This month, there were 83,256 rides on the Virginia Line **up 17%** compared with last year. Productivity at 26.2 rides per service hour is **up 17%** compared with last year.

- Ridership for both the Virginia Line and Route 1 was 117,811 **up 8.1%** compared with last year (page 14). There were 1.38 million rides over the most recent 12 months, **up 10.7%** compared with the previous 12 months.

RTC RAPID Lincoln Line

- This month, there were 37,043 rides on the Lincoln Line **up 7%** compared with last year. Productivity at 24.7 rides per service hour is **up 4%** compared with last year.
- Ridership for both the Lincoln Line and Route 11 was 90,650 **up 43%** compared with last year (page 16). There were 958K rides for the most recent 12 months, **up 31%** compared with the previous 12 months.

RTC REGIONAL CONNECTOR Carson Line

- There were 1,916 rides this month, **up 22%** compared with last April (page 18). At 6.5 rides per service hour, productivity is **up 12%** compared with last year. There were 20,101 rides for the most recent 12 months, **up 13%** compared with the previous 12 months.

RTC TMCC and UNR Education Pass

- There were 11,024 UNR Ed-Pass rides, **up 16%** compared with last year (page 20). **This is the highest April ridership ever for any UNR pass program.**
- There were 8,768 TMCC Ed-Pass rides, **up 103%** compared with last year.

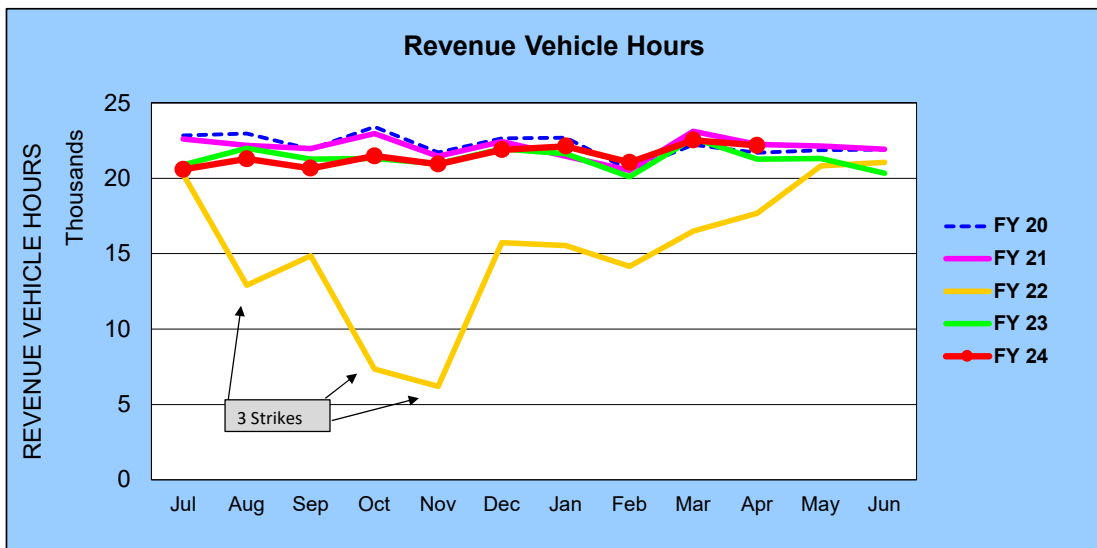
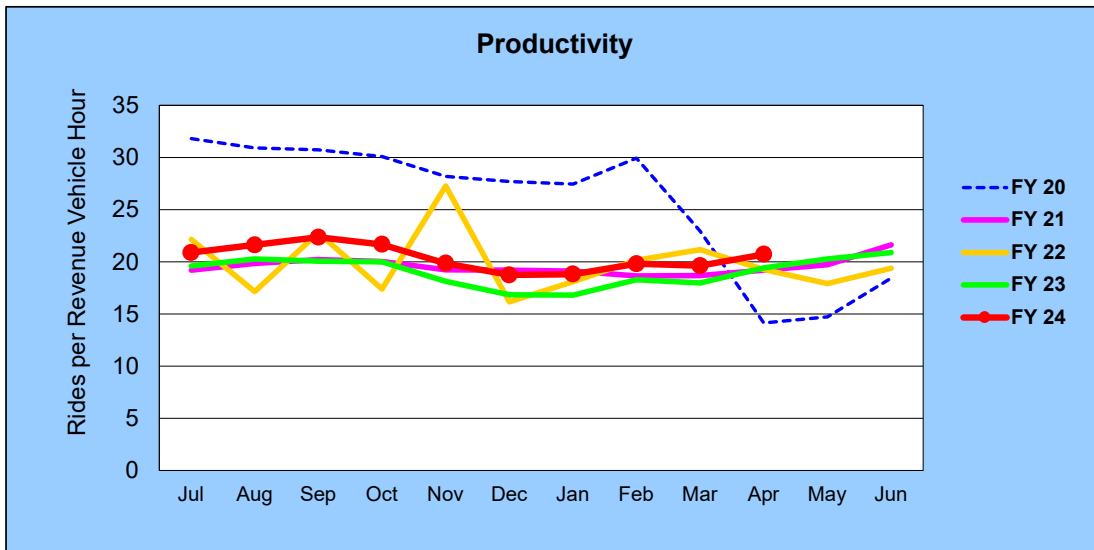
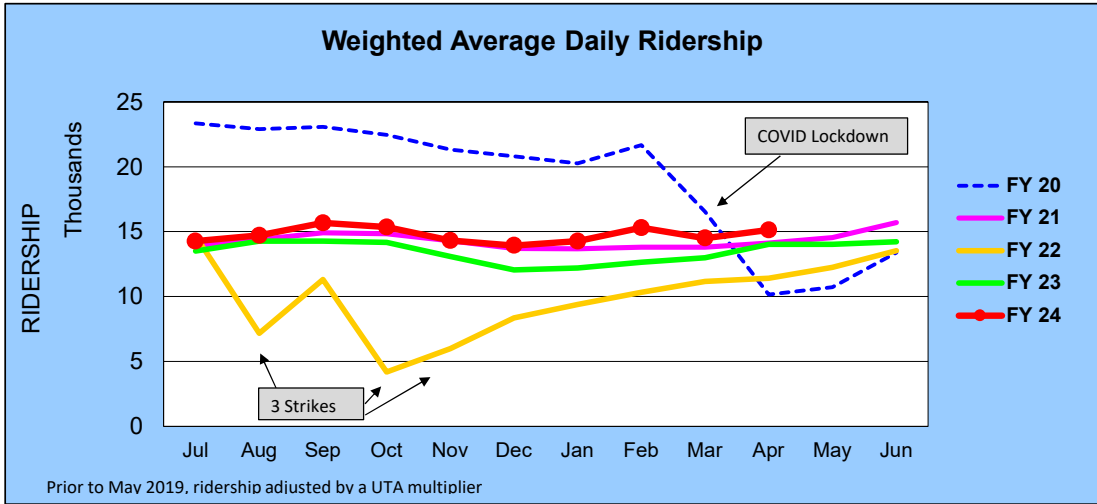
RTC Transit Operating Statistics

RTC Transit Fixed Route Bus						
Rolling 12-Month Ridership Comparison						
Most Recent 12 Months			Percent Change	Previous 12 Months		
Month	Year	Ridership		Month	Year	Ridership
May		432,170	16%	May		372,742
Jun		425,106	4.2%	Jun		408,079
Jul		429,718	4.9%	Jul		409,457
Aug		460,384	3.2%	Aug		445,976
Sep		461,670	8.2%	Sep		426,698
Oct		465,243	9.2%	Oct		426,167
Nov		415,646	9.4%	Nov		380,081
Dec		410,240	11.0%	Dec		369,598
Jan	2024	416,157	14.6%	Jan	2023	363,174
Feb		417,018	13.5%	Feb		367,575
Mar		442,102	8.6%	Mar		407,074
Apr		459,351	11.3%	Apr		412,674
TOTAL		5,234,805	9.3%	TOTAL		4,789,295

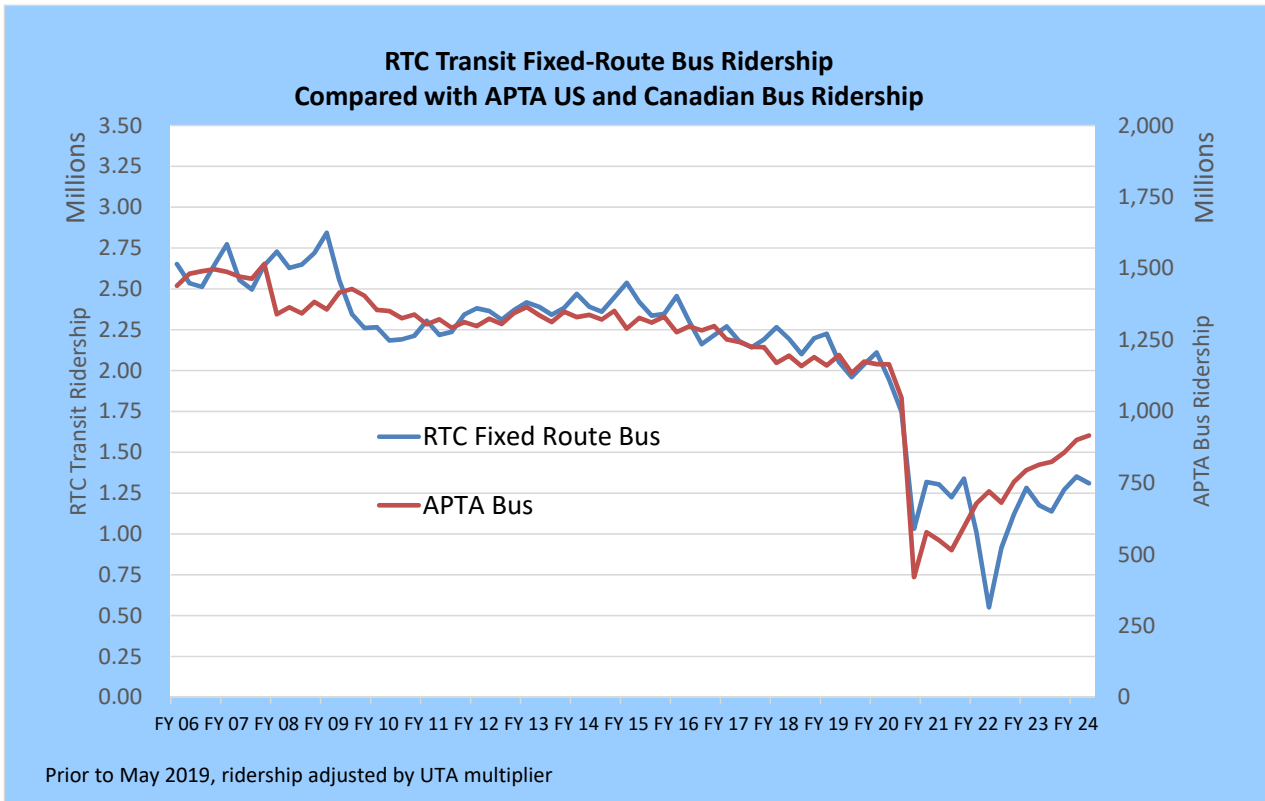
RTC Transit includes RTC RIDE, RTC RAPID, & RTC REGIONAL CONNECTOR

RTC Transit Fixed Route Bus

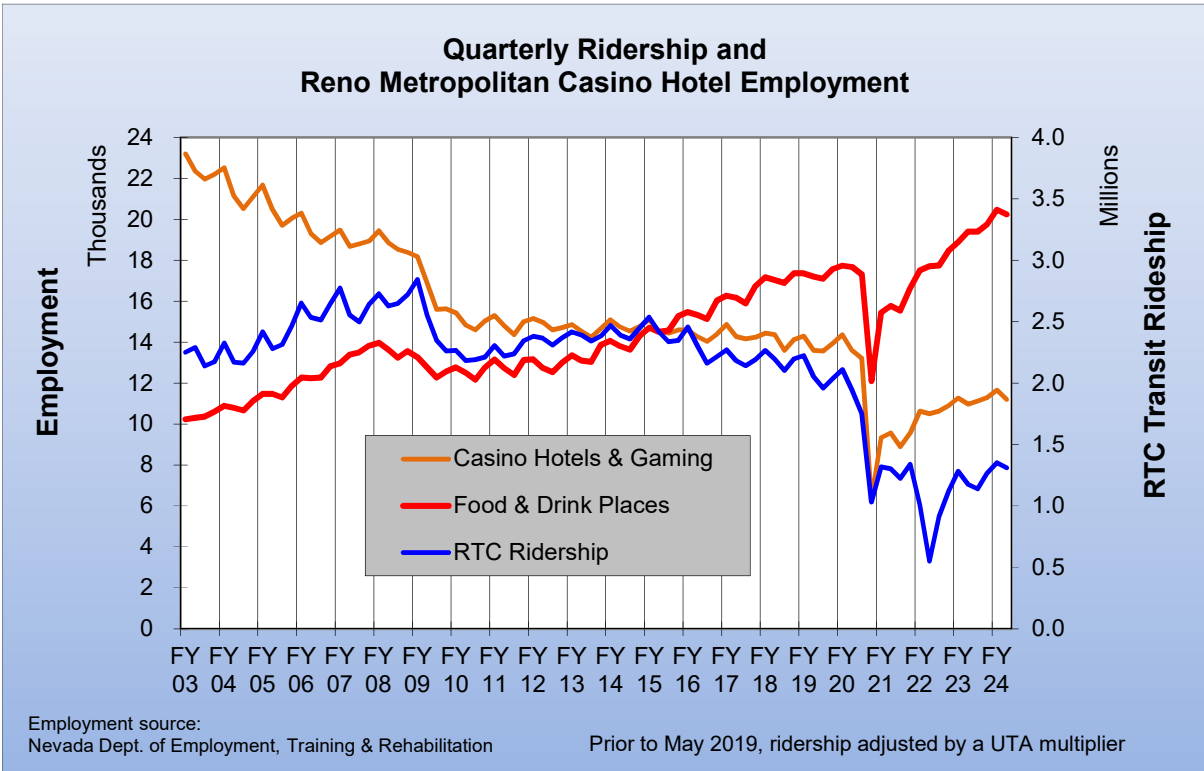
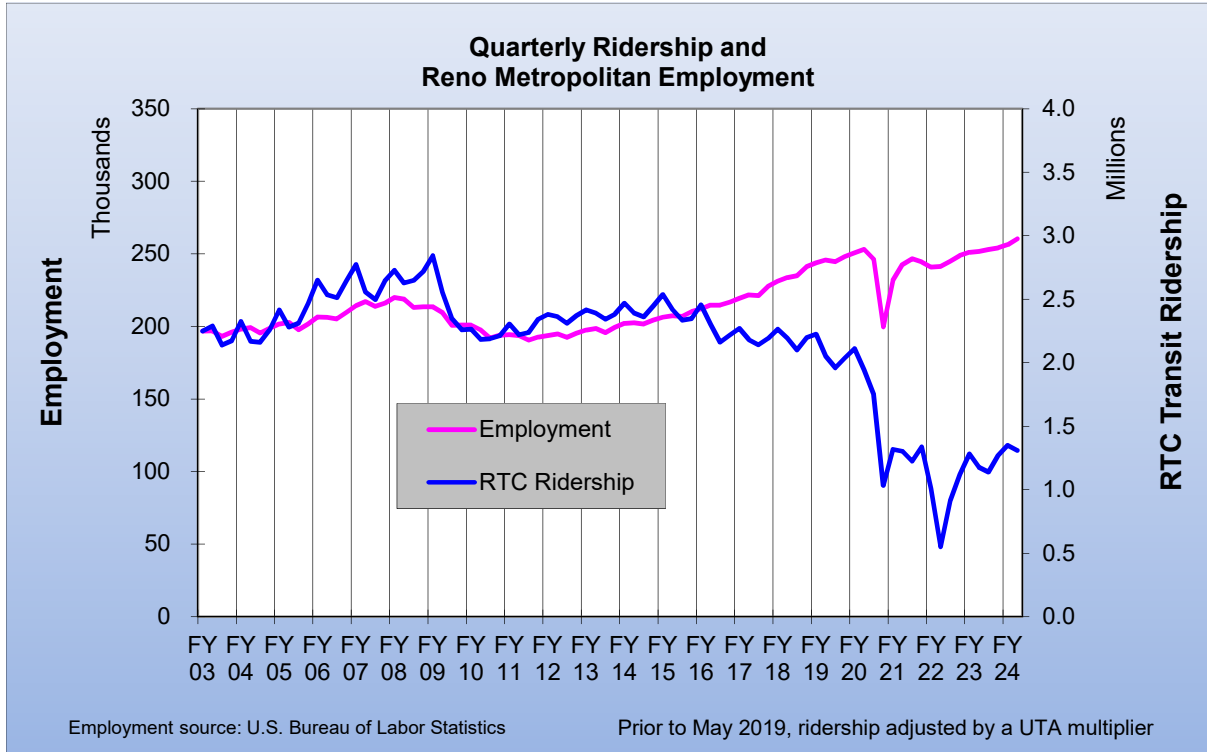
FISCAL YEAR COMPARISONS



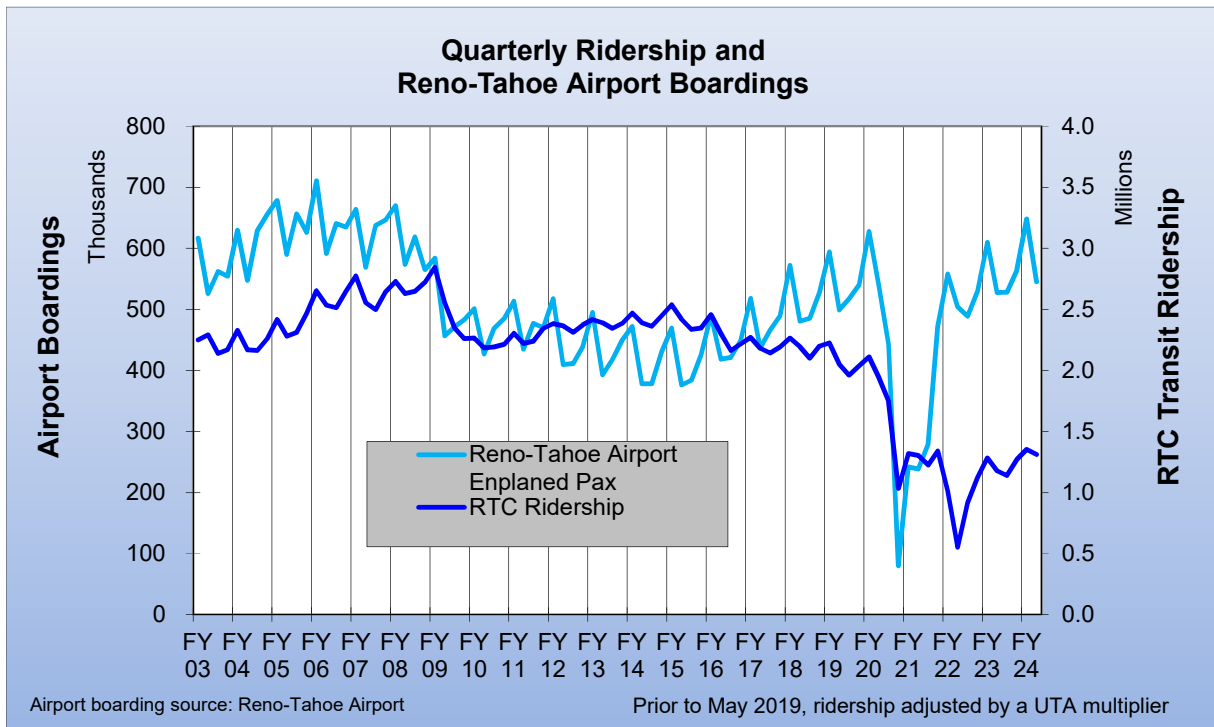
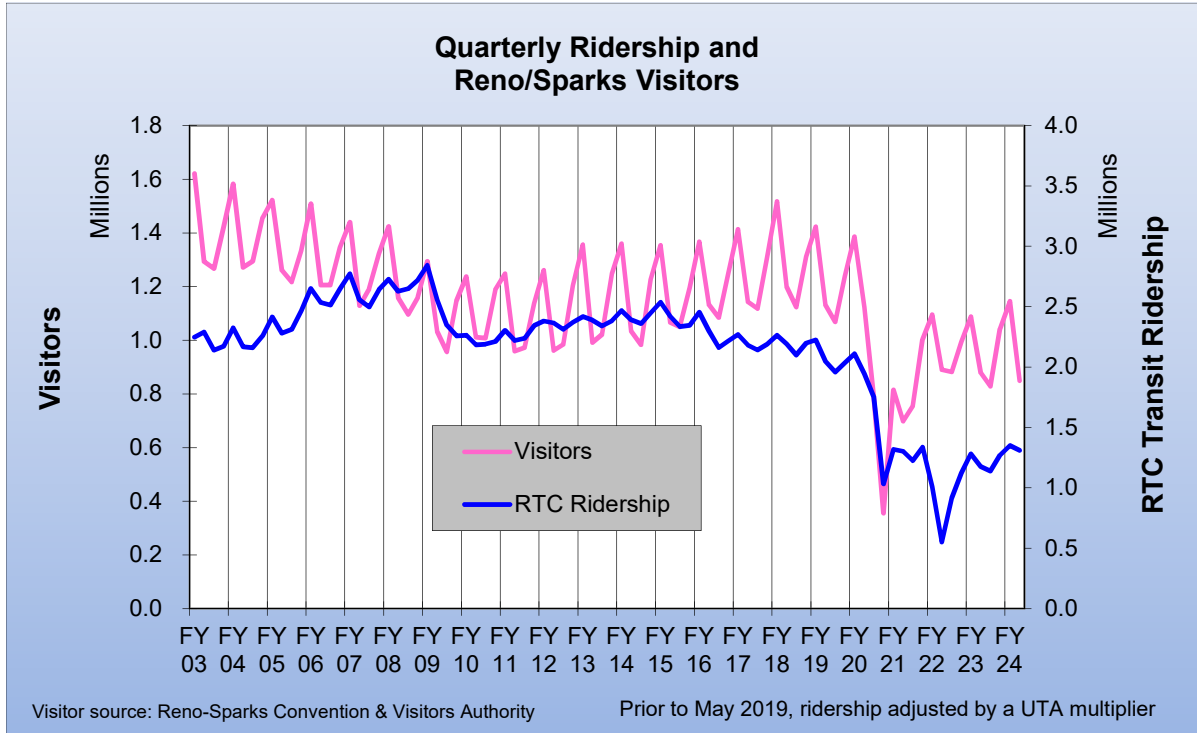
RTC Transit Fixed-Route Bus						
Weighted Average Daily Ridership						
Rolling 12-Month Ridership Comparison						
Most Recent 12 Months			Percent Change	Previous 12 Months		
Month	Year	Ridership		Month	Year	Ridership
May		14,008	14%	May		12,245
Jun		14,227	5.3%	Jun		13,514
Jul		14,257	5.5%	Jul		13,510
Aug		14,698	3.1%	Aug		14,259
Sep		15,675	9.7%	Sep		14,286
Oct		15,353	8.4%	Oct		14,157
Nov		14,320	9.4%	Nov		13,086
Dec		13,931	15.6%	Dec		12,049
Jan	2024	14,262	17.1%	Jan	2023	12,184
Feb		15,294	21.0%	Feb		12,638
March		14,500	11.7%	March		12,981
Apr		15,129	7.9%	Apr		14,016



RTC Transit Fixed-Route Bus



RTC Transit Fixed-Route Bus



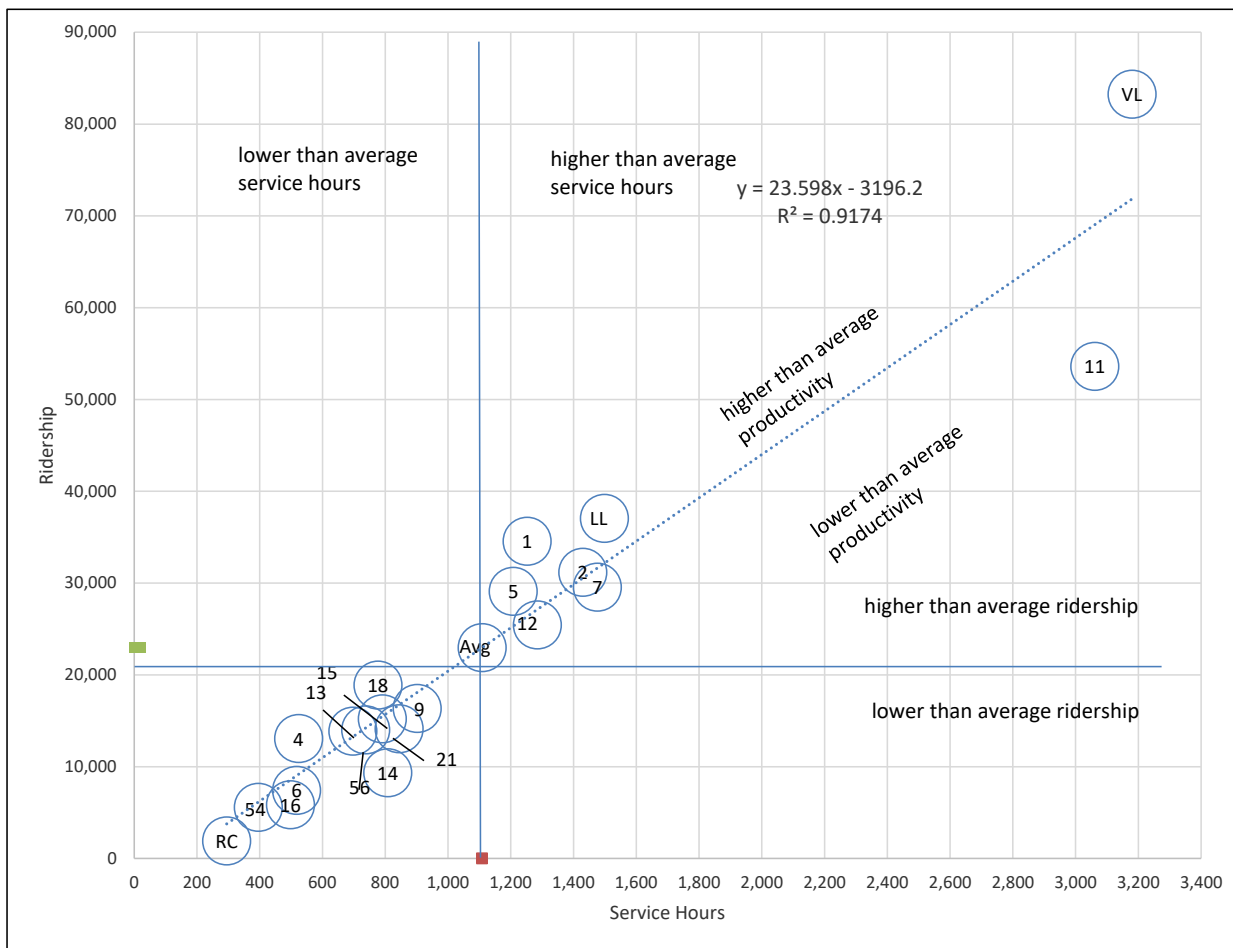
RTC Route Comparison Report

Apr 2024

Route *	Productivity	Route	Svs Hours Change Fr. Last Year	Route	Ridership	Route	Ridership Change From Last Year
1	27.6	11	178.2%	RAP VL	83,256	11	86.3%
RAP VL	26.2	21	37.5%	11	53,607	56	41.2%
4	24.9	16	31.0%	RAP LL	37,043	16	40.8%
RAP LL	24.7	14	22.3%	1	34,555	15	37.8%
18	24.3	56	21.9%	2	31,173	14	35.8%
5	24.1	6	10.4%	7	29,560	21	30.4%
2	21.8	RTC RC	8.5%	5	29,110	4	27.1%
TOTAL	20.7	13	5.0%	12	25,443	9	23.1%
7	20.0	TOTAL	4.3%	18	18,896	RTC RC	21.7%
13	19.9	15	3.6%	9	16,344	13	18.9%
12	19.8	RAP LL	2.4%	15	15,205	6	18.0%
15	19.2	5	1.3%	21	14,136	RAP VL	17.5%
56	19.0	RAP VL	0.5%	56	14,016	7	12.9%
9	18.1	4	-0.7%	13	13,864	TOTAL	11.3%
11	17.5	12	-1.6%	4	13,069	12	8.0%
21	16.7	2	-1.9%	14	9,335	2	7.2%
6	14.3	18	-5.6%	6	7,412	RAP LL	6.8%
54	14.1	7	-5.7%	16	5,845	5	-1.4%
16	11.7	9	-13.4%	54	5,566	54	-3.0%
14	11.6	1	-16.3%	RTC RC	1,916	18	-9.1%
RTC RC	6.5	54	-18.8%	TOTAL	459,351	1	-9.3%

* - RTC RC is RTC REGIONAL CONNECTOR.

RTC Route Comparison Chart Apr 2024



"higher" and "lower" refer to higher or lower than the average of all routes (not the system average)

RTC TRANSIT OPERATING STATISTICS

Apr 2024

Route	Total Ridership	Previous Year	Change	Vehicle Revenue Hours	Previous Year	Change	Rides/VRH	Previous Year	Change
RAPID VL	83,256	70,877	17%	3,180	3,164	0%	26.2	22.4	17%
RAPID LL	37,043	34,671	7%	1,498	1,464	2%	24.7	23.7	4%
1	34,555	38,091	-9%	1,252	1,496	-16%	27.6	25.5	8%
2	31,173	29,087	7%	1,429	1,457	-2%	21.8	20.0	9%
3		10,873			533			20.4	
4	13,069	10,281	27%	524	528	-1%	24.9	19.5	28%
5	29,110	29,533	-1%	1,208	1,192	1%	24.1	24.8	-3%
6	7,412	6,280	18%	518	469	10%	14.3	13.4	7%
7	29,560	26,178	13%	1,476	1,565	-6%	20.0	16.7	20%
9	16,344	13,274	23%	902	1,041	-13%	18.1	12.7	42%
11	53,607	28,768	86%	3,061	1,101	178%	17.5	26.1	-33%
12	25,443	23,550	8%	1,284	1,305	-2%	19.8	18.0	10%
13	13,864	11,657	19%	697	663	5%	19.9	17.6	13%
14	9,335	6,874	36%	808	661	22%	11.6	10.4	11%
15	15,205	11,038	38%	790	763	4%	19.2	14.5	33%
16	5,845	4,150	41%	498	380	31%	11.7	10.9	8%
18	18,896	20,779	-9%	777	823	-6%	24.3	25.3	-4%
21	14,136	10,838	30%	844	614	37%	16.7	17.6	-5%
26		8,634			683			12.6	
54	5,566	5,738	-3%	395	487	-19%	14.1	11.8	20%
56	14,016	9,928	41%	737	605	22%	19.0	16.4	16%
RC Carson	1,916	1,575	22%	295	272	8%	6.5	5.8	12%
Misc. Service		0	N/A		0	N/A		0.0	N/A
Apr '24	459,351	412,674	11.3%	22,174	21,264	4.3%	20.7	19.4	6.7%
Apr '23	412,674			21,264			19.4		
Perc. Change	11.3%			4.3%			6.7%		

RTC TRANSIT OPERATING STATISTICS

Apr 2024

Route	Vehicle Revenue Miles	Rides/VRM	Est. Gross Operating Cost	Est. Cost Per VRH	Est. Cost Per VRM	Est. Cost Per Ride
RAPID VL	29,457	2.83	\$501,994	\$158	\$17.04	\$6.03
RAPID LL	14,385	2.58	\$236,505	\$158	\$16.44	\$6.38
1	12,395	2.79	\$197,676	\$158	\$15.95	\$5.72
2	14,957	2.08	\$225,636	\$158	\$15.09	\$7.24
3						
4	6,790	1.92	\$82,715	\$158	\$12.18	\$6.33
5	16,058	1.81	\$190,690	\$158	\$11.87	\$6.55
6	4,795	1.55	\$81,710	\$158	\$17.04	\$11.02
7	26,031	1.14	\$233,005	\$158	\$8.95	\$7.88
9	10,096	1.62	\$142,351	\$158	\$14.10	\$8.71
11	29,949	1.79	\$483,231	\$158	\$16.14	\$9.01
12	13,048	1.95	\$202,773	\$158	\$15.54	\$7.97
13	6,321	2.19	\$109,983	\$158	\$17.40	\$7.93
14	7,796	1.20	\$127,584	\$158	\$16.37	\$13.67
15	8,127	1.87	\$124,785	\$158	\$15.35	\$8.21
16	3,482	1.68	\$78,590	\$158	\$22.57	\$13.45
18	8,438	2.24	\$122,628	\$158	\$14.53	\$6.49
21	9,227	1.53	\$133,268	\$158	\$14.44	\$9.43
26						
54	6,349	0.88	\$62,435	\$158	\$9.83	\$11.22
56	10,865	1.29	\$116,419	\$158	\$10.71	\$8.31
RC Carson	8,859	0.22	\$46,538	\$158	\$5.25	\$24.29
Misc. Service						
Apr '24	247,425	1.86	\$3,500,515	\$158	\$14.15	\$7.62
Apr '23	225,983	1.83	\$3,137,097	\$148	\$13.88	\$7.60
Perc. Change	9.5%	1.7%	12%	7.0%	1.9%	0.2%

RTC Transit Operating Statistics

May '23 - Apr '24

Route	Total Ridership	Previous Year	Change	Vehicle Revenue Hours	Previous Year	Change	Rides/VRH	Previous Year	Change
RAPID VL	967,691	793,526	22%	37,216	37,928	-2%	26.0	20.9	24%
RAPID LL	452,801	383,923	18%	17,749	17,984	-1%	25.5	21.3	20%
1	415,862	455,926	-9%	15,424	17,805	-13%	27.0	25.6	5%
2	374,735	333,278	12%	17,148	17,337	-1%	21.9	19.2	14%
2s									
3	1,564	134,907		95	6,421				
3CC									
4	147,934	125,930	17%	6,393	6,345	1%	23.1	19.8	17%
5	336,067	297,252	13%	14,167	13,940	2%	23.7	21.3	11%
6	82,336	71,773	15%	6,244	5,683	10%	13.2	12.6	4%
7	328,896	314,642	5%	18,100	18,981	-5%	18.2	16.6	10%
9	176,616	128,025	38%	10,721	12,149	-12%	16.5	10.5	56%
11	532,561	371,137	43%	30,678	13,083	134%	17.4	28.4	-39%
12	288,323	266,834	8%	13,878	15,828	-12%	20.8	16.9	23%
13	154,060	132,143	17%	8,172	8,067	1%	18.9	16.4	15%
14	105,478	92,541	14%	9,587	8,017	20%	11.0	11.5	-5%
15	166,615	149,767	11%	9,309	9,650	-4%	17.9	15.5	15%
16	55,587	51,587	8%	5,936	4,503	32%	9.4	11.5	-18%
18	250,863	252,708	-1%	9,142	9,954	-8%	27.4	25.4	8%
19									
21	164,980	123,781	33%	10,019	7,348	36%	16.5	16.8	-2%
26	1,568	108,184	-99%	141	8,142	-98%	11.1	13.3	-16%
54	67,349	68,072	-1%	4,790	5,862	-18%	14.1	11.6	21%
56	142,818	115,516	24%	8,078	7,455	8%	17.7	15.5	14%
RC Carson	20,101	17,843	13%	3,316	3,396	-2%	6.1	5.3	15%
Misc. Service									
Current 12 Months	5,234,805	4,789,295	9.3%	256,302	255,877	0.2%	20.4	18.7	9.1%
Previous 12 Months	4,789,295			255,877			18.7		
Perc. Change	9.3%			0.2%			9.1%		

RTC Transit Operating Statistics

May '23 - Apr '24

Route	Vehicle Revenue Miles (thousand)	Rides/VRM	Est. Gross Operating Cost (thousand)	Est. Cost Per VRH	Est. Cost Per VRM	Est. Cost Per Ride
RAPID VL	345.9	2.80	\$5,774	\$155	\$16.69	\$5.97
RAPID LL	171.2	2.64	\$2,750	\$155	\$16.06	\$6.07
1	151.7	2.74	\$2,408	\$156	\$15.87	\$5.79
2	179.6	2.09	\$2,677	\$156	\$14.90	\$7.14
2s						
3	1.1		\$14			
3CC						
4	82.2	1.80	\$998	\$156	\$12.14	\$6.75
5	196.7	1.71	\$2,212	\$156	\$11.25	\$6.58
6	57.9	1.42	\$975	\$156	\$16.83	\$11.84
7	311.2	1.06	\$2,824	\$156	\$9.07	\$8.59
9	120.4	1.47	\$1,673	\$156	\$13.90	\$9.47
11	339.4	1.57	\$4,805	\$157	\$14.16	\$9.02
12	154.6	1.86	\$2,170	\$156	\$14.03	\$7.53
13	75.1	2.05	\$1,276	\$156	\$16.98	\$8.28
14	92.5	1.14	\$1,497	\$156	\$16.19	\$14.19
15	96.6	1.73	\$1,453	\$156	\$15.05	\$8.72
16	38.9	1.43	\$927	\$156	\$23.81	\$16.68
18	99.1	2.53	\$1,427	\$156	\$14.40	\$5.69
19						
21	109.7	1.50	\$1,565	\$156	\$14.26	\$9.48
26	1.5	1.07	\$21	\$148	\$14.21	\$13.28
54	76.5	0.88	\$748	\$156	\$9.77	\$11.10
56	118.7	1.20	\$1,263	\$156	\$10.64	\$8.84
RC Carson	100.2	0.20	\$518	\$156	\$5.16	\$25.75
Misc. Service						
Current 12 Months	2,921.5	1.79	\$40,030	\$156	\$13.70	\$7.65
Previous 12 Months	2,733.7	1.75	\$37,450	\$146	\$13.70	\$7.82
Perc. Change	6.9%	2.3%	6.9%	6.7%	0.0%	-2.2%

Apr

May 2023 - Apr 2024

	2024	2023	Percent Change	Current 12 Months	Previous 12 Month	Percent Change
Single Ride Cash						
Full Fare	3,866	5,241	-26%	57,093	67,340	-15%
Reduced*	5,947	8,174	-27%	81,236	102,982	-21%
RTC ACCESS ID	311	372	-16.4%	4,090	4,860	-16%
Total	10,124	13,787	-27%	142,419	175,182	-19%
Day Pass Cash						
Full Fare	58,463	60,346	-3%	680,235	779,950	-13%
Reduced*	71,607	71,405	0.3%	825,806	900,792	-8.3%
Total	130,070	131,751	-1.3%	1,506,041	1,680,742	-10%
Pre-Purchase Period Pass						
Full Fare	114,439	100,624	14%	1,334,816	1,088,909	23%
Reduced*	154,312	121,169	27%	1,638,319	1,327,775	23%
Total	268,751	221,793	21%	2,973,135	2,416,684	23%
Transfers	327	75	336%	2,102	2,865	-27%
Flow Through	5,309	5,422	-2%	62,349	59,758	4.3%
Free Rides	21,528	22,836	-6%	309,819	271,531	14%
U/Ed-Pass Free Rides	19,537	13,784	42%	201,159	144,295	39%
Stored Ride Pass	3,540	3,226	9.7%	37,611	38,238	-1.6%
Full Fare	189,845	180,252	5.3%	2,255,153	2,102,290	7.3%
Reduced*	269,202	232,304	16%	2,977,982	2,685,495	11%
				0	0	
Total Ridership	459,351	412,674	11.3%	5,234,640	4,789,295	9.3%
Previous 12 Months	412,674			4,789,295		
Change	11.3%			9.3%		
Vehicle Revenue Hours	22,174	21,264	4.3%	256,302	255,877	0.2%
Previous 12 Months	21,264			255,877		
Change	4.3%			0.2%		
Rides / VRH	20.7	19.4	6.7%	20.4	18.7	9.1%
Previous 12 Months	19.4			18.7		
Change	6.7%			9.1%		
Vehicle Revenue Miles	247,425	225,983	9.5%	2,921,527	2,733,696	6.9%
Rides / VRM	1.86	1.83	1.7%	1.79	1.75	2.3%
Est. Gross Operating Cost	\$3,500,515	\$3,137,097	12%	\$40,030,462	\$37,449,965	6.9%
Est. Cost Per VRH	\$158	\$148	7.0%	\$156.18	\$145.84	6.7%
Est. Cost Per VRM	\$14.15	\$13.88	1.9%	\$13.70	\$13.64	0.4%
Est. Cost Per Ride	\$7.62	\$7.60	0.2%	\$7.65	\$7.80	-2.2%

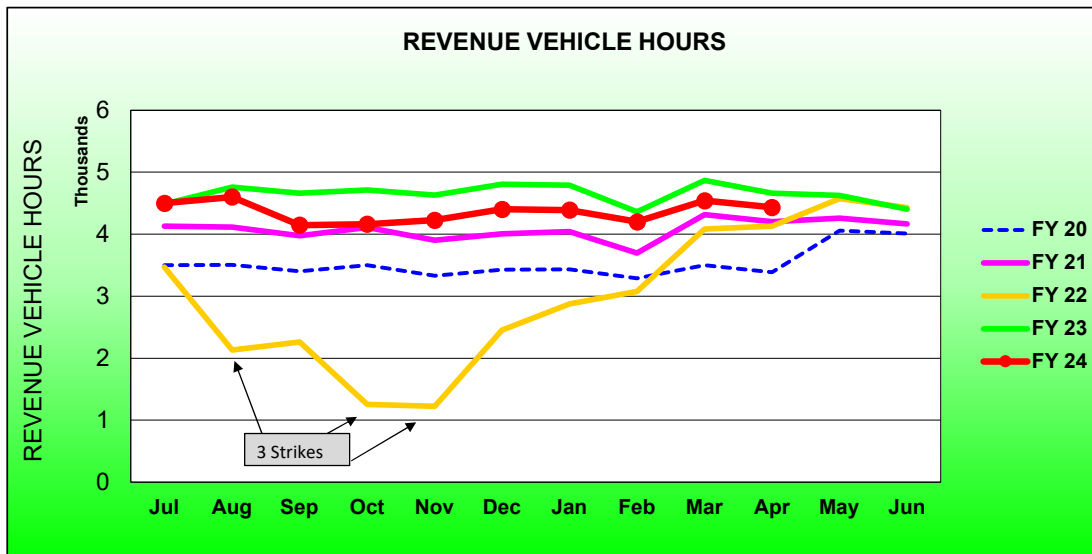
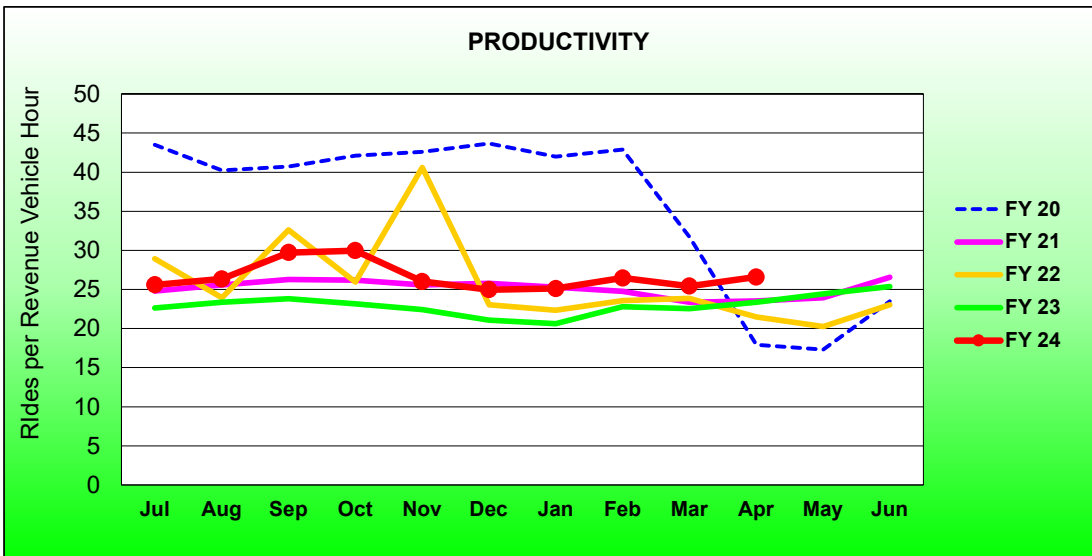
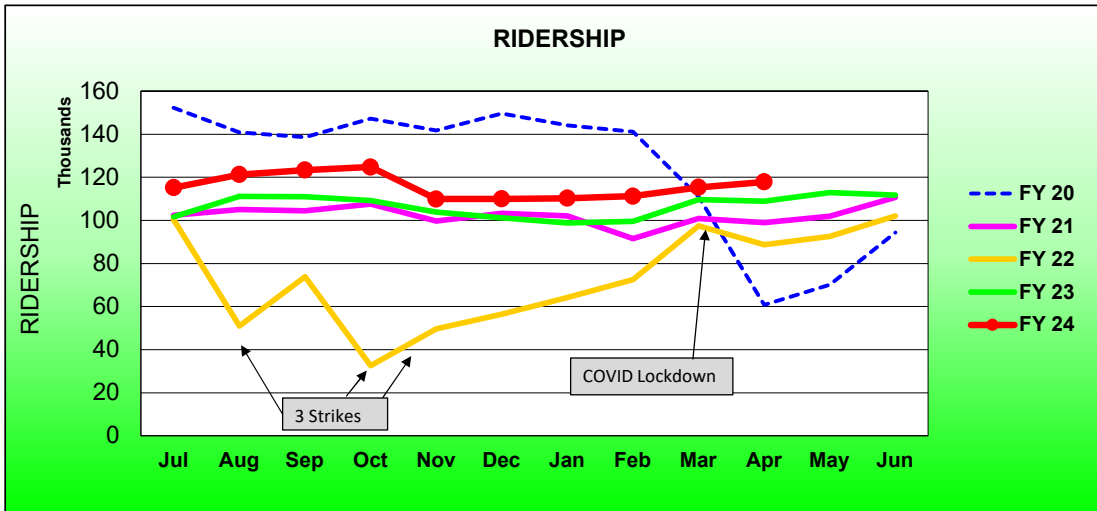
* - Reduced fare includes Youth, Senior, Disabled, and US Veterans

RTC Transit Operating Statistics

RTC RAPID Virginia Line and Route 1						
ROLLING 12-MONTH COMPARISON						
Most Recent 12 Months			Percent Change	Previous 12 Months		
Month	Year	Ridership		Month	Year	Ridership
May		112,931	22%	May		92,578
Jun		111,746	10%	Jun		102,048
Jul		115,149	13%	Jul		101,575
Aug		121,197	9.1%	Aug		111,109
Sep		123,298	11%	Sep		111,004
Oct		124,715	14%	Oct		109,180
Nov		109,893	5.8%	Nov		103,868
Dec		109,966	8.6%	Dec		101,252
Jan	2024	110,229	11.6%	Jan	2023	98,740
Feb		111,239	11.8%	Feb		99,491
March		115,379	5.2%	March		109,639
Apr		117,811	8.1%	Apr		108,968
TOTAL		1,383,553	10.7%	TOTAL		1,249,452

* - Strikes occurred Aug 3-13, Sep 27-Oct 20, Nov 9-Dec 3, 2021

RTC RAPID Virginia Line and Route 1 Fiscal Year Comparisons



RTC RAPID Lincoln Line and Route 11						
Rolling 12-Month Comparison						
Most Recent 12 Months			Percent Change	Previous 12 Months		
Month	Year	Ridership		Month	Year	Ridership
May		74,197	25%	May		59,313
Jun		76,479	19%	Jun		64,189
Jul		81,268	27%	Jul		64,207
Aug		85,588	26%	Aug		67,878
Sep		86,016	24%	Sep		69,592
Oct		86,638	30%	Oct		66,800
Nov		76,791	32%	Nov		58,346
Dec		77,855	30%	Dec		59,985
Jan	2024	82,348	37%	Jan	2023	60,272
Feb		81,020	43%	Feb		56,669
Mar		86,512	34%	Mar		64,370
Apr		90,650	43%	Apr		63,439
TOTAL		985,362	31%	TOTAL		755,060

RTC Transit Operating Statistics

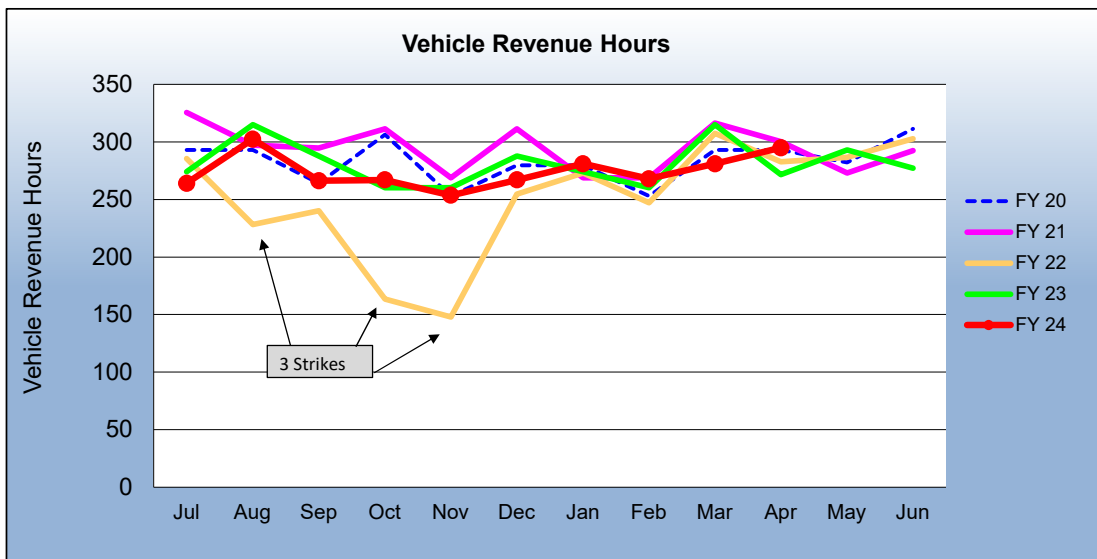
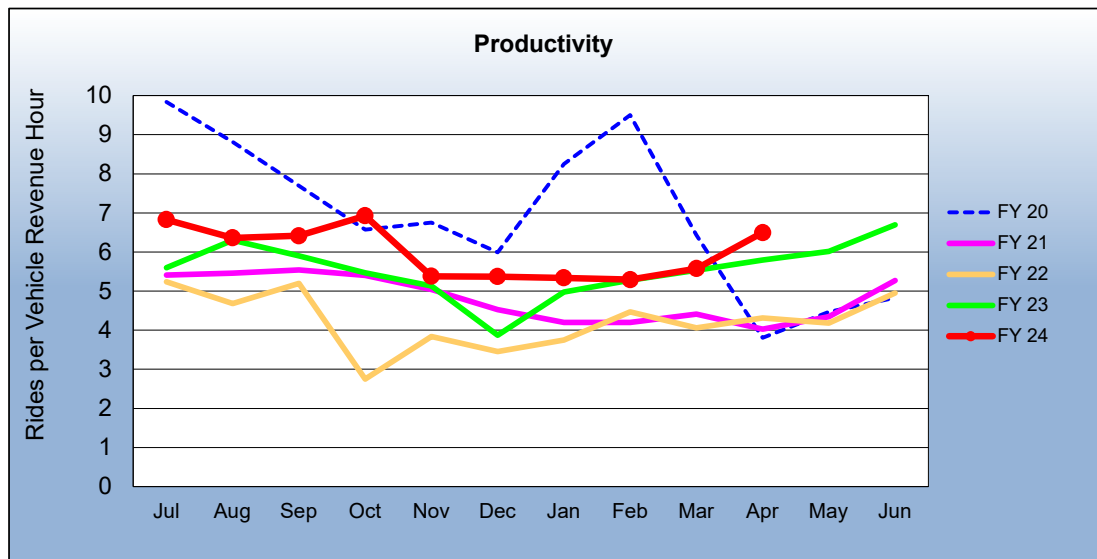
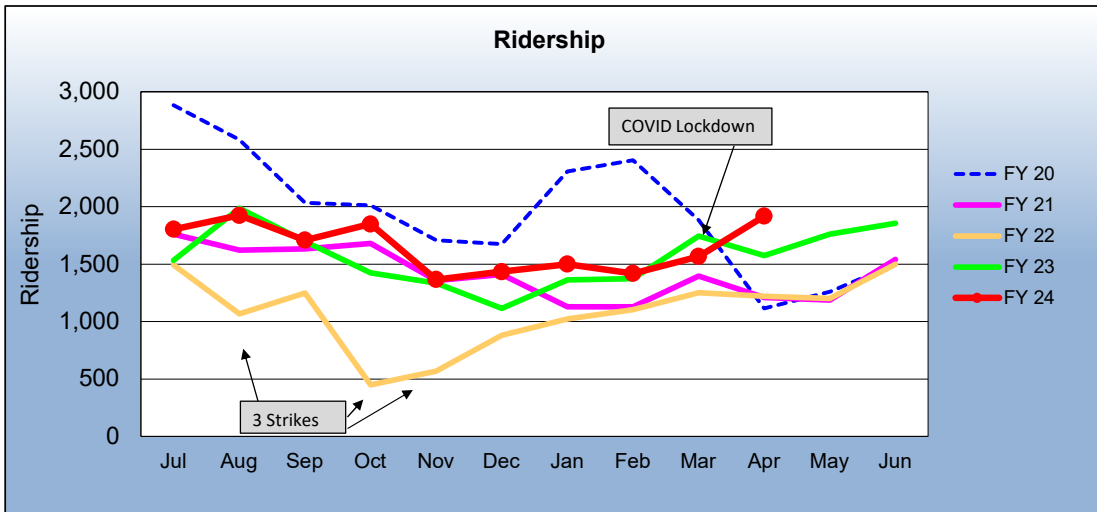
RTC RAPID Virginia & Lincoln Lines						
ROLLING 12-MONTH COMPARISON						
Most Recent 12 Months			Percent Change	Previous 12 Months		
Month	Year	Ridership		Month	Year	Ridership
May		116,256	40%	May		82,872
Jun		116,866	26%	Jun		92,419
Jul		120,564	27%	Jul		94,642
Aug		128,312	22%	Aug		104,983
Sep		127,255	20%	Sep		105,807
Oct		127,380	25%	Oct		101,939
Nov		111,741	14%	Nov		98,227
Dec		112,141	18%	Dec		94,884
Jan	2024	111,384	17%	Jan	2023	94,823
Feb		111,895	17%	Feb		95,606
Mar		116,399	10%	Mar		105,699
Apr		120,299	14%	Apr		105,548
TOTAL		1,420,492	21%	TOTAL		1,177,449

* - Strikes occurred Aug 3-13, Sep 27-Oct 20, Nov 9-Dec 3, 2021

RTC REGIONAL CONNECTOR - Carson Line						
Rolling 12 Month Comparison						
Most Recent 12 Months			Percent Change	Previous 12 Months		
Month	Year	Ridership		Month	Year	Ridership
May		1,762	47%	May		1,200
Jun		1,855	24%	Jun		1,499
Jul		1,802	17%	Jul		1,534
Aug		1,924	-3.1%	Aug		1,985
Sep		1,708	0.6%	Sep		1,697
Oct		1,849	30%	Oct		1,424
Nov		1,365	2.2%	Nov		1,335
Dec		1,434	28.8%	Dec		1,113
Jan	2024	1,500	10.0%	Jan	2023	1,364
Feb		1,419	3.0%	Feb		1,374
Mar		1,567	-10.0%	Mar		1,743
Apr		1,916	22.0%			1,575
TOTAL		20,101	13%	TOTAL		17,843

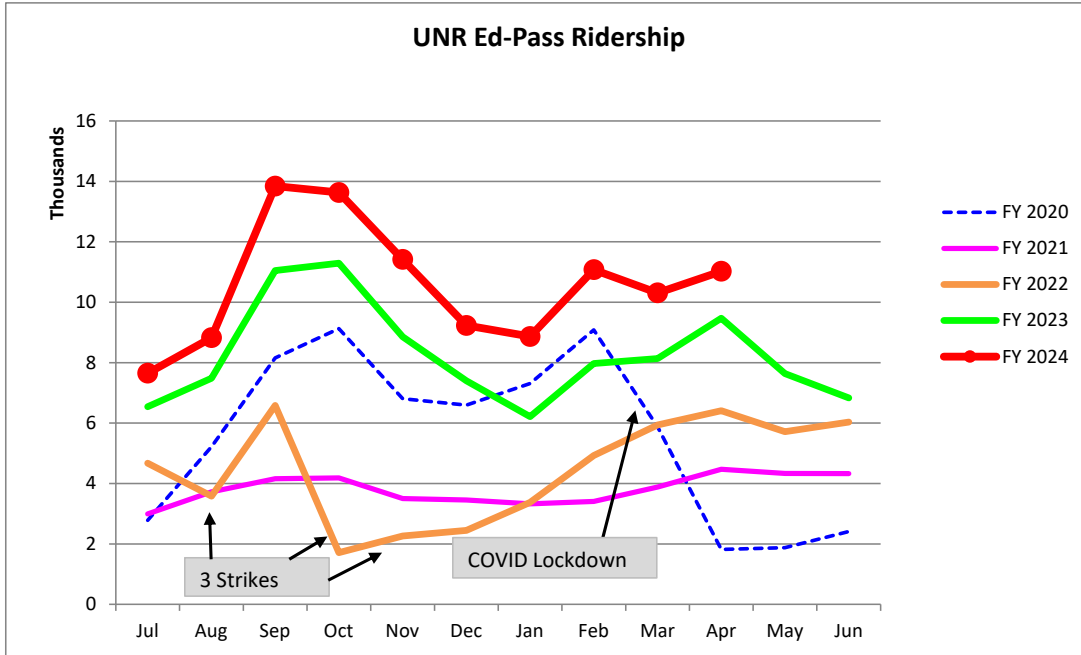
* - Strikes occurred Aug 3-13, Sep 27-Oct 20, Nov 9-Dec 3, 2021

RTC REGIONAL CONNECTOR Carson Line Fiscal Year Comparisons



**RTC Transit Fixed Route Bus Ridership Report
University of Nevada, Reno Ed-Pass Program
FY 2024**

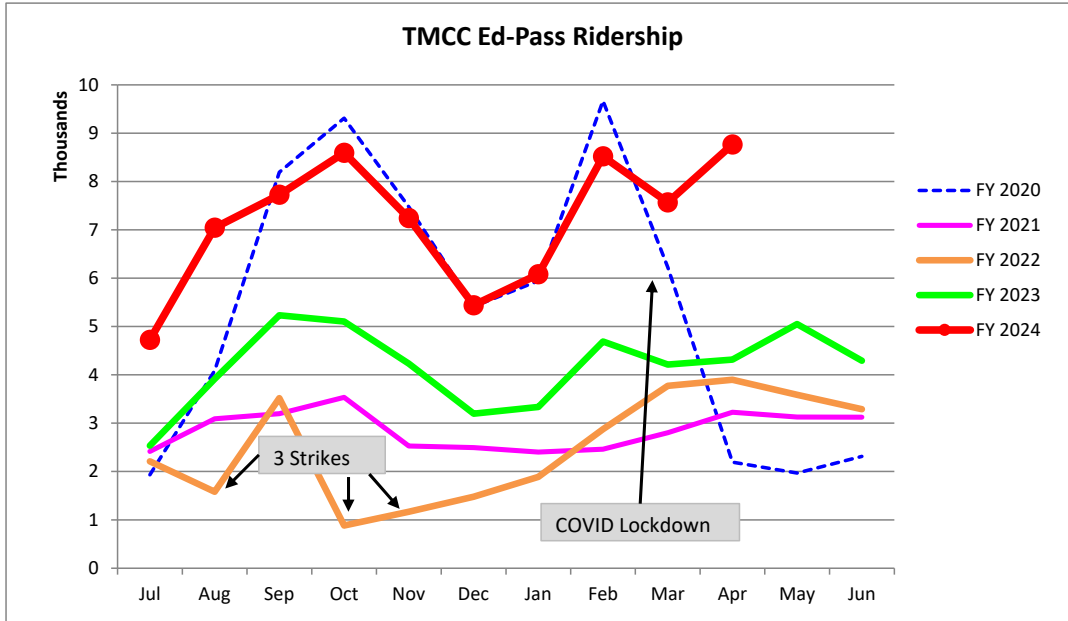
Category	Jul	Aug	Sep	Oct	Nov	Dec	Jan	Feb	Mar	Apr	May	Jun	FYTD
FY 2020	2,779	5,218	8,159	9,127	6,808	6,592	7,312	9,084	5,873	1,818	1,877	2,410	67,057
FY 2021	2,991	3,723	4,156	4,185	3,502	3,455	3,329	3,409	3,881	4,471	4,333	4,330	45,765
FY 2022	4,670	3,581	6,584	1,710	2,264	2,447	3,376	4,924	5,936	6,410	5,716	6,033	53,651
FY 2023	6,539	7,482	11,046	11,291	8,857	7,399	6,215	7,973	8,138	9,470	7,640	6,833	98,883
Percent Change	17%	18%	25%	21%	29%	25%	43%	39%	27%	16%			
FY 2024	7,650	8,824	13,841	13,631	11,414	9,231	8,864	11,077	10,309	11,024			105,865



Fiscal Year	Rides
FY 2003	51,228
FY 2004	55,114
FY 2005	69,685
FY 2006	88,070
FY 2007	85,295
FY 2008	86,461
FY 2009	88,385
FY 2010	79,518
FY 2011	75,925
FY 2012	75,300
FY 2013	50,438
FY 2014	40,854
FY 2015	41,778
FY 2016	50,022
FY 2017	40,581
FY 2018	34,154
FY 2019	30,251
U-Pass:	
FY 2020	67,057
FY 2021	45,765
FY 2022	53,651
FY 2023	98,883

**RTC Transit Fixed Route Bus Ridership Report
Truckee Meadows Community Ed-Pass Program
FY 2024**

Category	Jul	Aug	Sep	Oct	Nov	Dec	Jan	Feb	Mar	Apr	May	Jun	FYTD
FY 2020	1,933	4,086	8,193	9,311	7,479	5,413	5,945	9,668	6,227	2,193	1,968	2,310	64,726
FY 2021	2,414	3,090	3,194	3,535	2,527	2,493	2,402	2,459	2,800	3,225	3,126	3,124	34,389
FY 2022	2,208	1,584	3,516	883	1,170	1,480	1,886	2,875	3,773	3,899	3,585	3,287	30,146
FY 2023	2,533	3,913	5,233	5,103	4,231	3,195	3,335	4,690	4,213	4,314	5,051	4,292	50,103
Percent Change	87%	80%	48%	68%	71%	70%	82%	82%	80%	103%			
FY 2024	4,725	7,045	7,727	8,596	7,244	5,440	6,081	8,520	7,569	8,768			



Fiscal Year	Rides
FY 2013	90,583
FY 2014	113,700
FY 2015	94,112
FY 2016	83,375
FY 2017	66,110
FY 2018	53,027
FY 2019	37,191

Ed-Pass:	Rides
FY 2020	64,726
FY 2021	34,389
FY 2022	30,146
FY 2023	50,103