



REGIONAL TRANSPORTATION COMMISSION
Public Transportation • Streets and Highways • Planning



RTC Transit Fixed Route Bus Operating Statistics

**RTC RIDE
RTC RAPID
RTC REGIONAL CONNECTOR**

June 2024

RTC Transit Fixed Route Bus Operating Statistics Report

TABLE OF CONTENTS

RTC Transit Fixed Route Bus Highlights.....	Page ii
RTC Transit Fixed Route Bus Summary	Page iv
System Reports.....	Page 1
Economic Data	Page 5
Route Comparison Data.....	Page 7
Monthly Operating Statistics.....	Page 9
RTC RAPID Virginia Line & Route 1	Page 14
RTC RAPID Lincoln Line & Route 11	Page 16
RTC REGIONAL CONNECTOR Carson Line	Page 18
RTC TMCC and UNR Education Pass.....	Page 20

RTC Transit Fixed Route Bus Highlights

June 2024

RTC Transit Fixed Route Bus

- There was a service change effective May 4th. The outbound line-of-route adjusted for Route 13. Sunday service frequency increased during the midday hours for Route 21. Services extended for Virginia Line. Holiday levels of services adjusted.
- For the month of June, there were 456,808 rides, **up 7.5%** compared with last year (page 1). Weighted average daily ridership was 16,157, **up 13.6%** compared with last year (page 3).
- For the most recent 12 months, there were 5.31 million rides **up 9.2%** compared with the previous 12 months.
- In June, there were 21,551 service hours, **up 6.0%** compared with last year (page 9).
- Productivity was 21.2 rides per service hour, **up 1.4%** compared with last year (page 9).

External Impacts on Ridership

- The average temperature this month was 75.8° F, up 8.5° F compared with last year.
- The Reno-Sparks area preliminary unemployment rate in May was 4.5%. Unemployment has been gradually trending upward since a low of 2.8% in December 2021.
- Nevada's preliminary unemployment rate for May was 5.1%. The national unemployment rate for May was 4.0%.

Historical Impacts Causing a Downward Trend in Bus Ridership

- According to Bureau of Labor Statistics, 27% of US employees worked remotely at least part of the time in 2023, with several academic surveys suggesting it is closer to 50%*.
- In April 2022, the City of Reno entered an agreement with Bird electric scooters to serve Reno.
- In 2021, Keolis transit workers went on strike August 3 to 13, September 27 to October 20, and November 9 to December 3. Limited service was provided on Routes 1, 7, and 11 and RTC REGIONAL CONNECTOR to Carson City. RTC provided free rides on RIDE, FlexRIDE, taxis, and UberX during the second and third strikes.
- A combination of the pandemic, stimulus checks, easy car financing, and gig jobs requiring cars has likely resulted in a large number of people abandoning transit for car ownership.
- In response to the COVID-19 pandemic, Governor Sisolak ordered the shutdown of casinos and other nonessential businesses in March 2020. In May 2020, Governor Sisolak reopened a number of businesses including bars, salons, gyms, and retail. Casinos were allowed to reopen in June 2020. In May 2021, maximum business capacity increased to 100% in Washoe County.
- There has been an increase in people working primarily from home, approximately eight million in 2018 according to US Census Bureau estimates, taking over transit as the second most common means of getting to work.
- While employment has increased in the region, the makeup of local employment has significantly changed. When Reno was a tourism and gaming town, a large portion of employment was in the low-wage, service industry whereas recently jobs tend to be higher wage and geographically dispersed requiring cars.
- Uber started permanent service in Reno in 2015 and Lyft started shortly after.
- As of 2014, Nevada provides driver's licenses for people who are undocumented immigrants.
- As downtown and midtown areas in-fill and gentrify, this also pushes lower income people to the suburbs where they are much more likely to need cars. This is a nationwide trend.
- The drop in ridership (before COVID) has been a nationwide trend as illustrated by the chart on page 4 which compares RTC transit ridership with US and Canadian bus ridership.
- With the growth of online shopping and food delivery, it is also likely that bus trips used for shopping and dining out has fallen substantially, especially for those with mobility challenges who would prefer online shopping and food delivery. Also, people without cars may decide to purchase a car with the intention of using the car to deliver food and finance the car.

* - <https://www.forbes.com/sites/forbesfinancecouncil/2023/11/06/changing-environment-altering-employer-obligations-for-remote-workers/?sh=7c9e531e2145>



RTC Transit Fixed Route Bus Summary

Route Ridership

- For June, Route 1 (serving S Virginia St between downtown Reno and Meadowood Mall) had the highest productivity in the system with 27.7 rides per service hour (page 7).
- Route 18 (serving Glendale) came in second with 26.4.
- Route 5 (serving Sutro – Sun Valley) had the third highest productivity with 25.0 rides per service hour.
- Route 11 ridership increased the most over last year by 48.6%. In May 2023, Routes 3 and 26 were eliminated with Route 11 absorbing parts of Routes 3 and 26.
- Route 16 (serving Idlewild) had the second highest increase in ridership at 26.1%.
- Route 7 (serving Stead) had the third highest increase in ridership at 25.3%.

RTC RAPID (Virginia & Lincoln Lines Combined)

- This month, there were 113,689 rides on RTC RAPID **down 2.7%** compared with last year. By comparison, system ridership was up 7.5%. The productivity of RTC RAPID at 24.9 rides per service hour was **down 1.5%** compared with last year. By comparison, system productivity was 21.2 rides per service hour, **up 1.4%** compared with last year.
- There were 1.43 million rides over the most recent 12 months, **up 15%** compared with the previous 12 months.
- RAPID rides now make up 25% of system ridership.
- 44.5% of all system rides were taken on RAPID and Routes 1 and 11.

RTC RAPID Virginia Line

- This month, there were 76,364 rides on the Virginia Line **down 1.0%** compared with last year. Productivity at 24.7 rides per service hour is **up 1.0%** compared with last year.
- Ridership for both the Virginia Line and Route 1 was 111,479 **down 0.2%** compared with last year (page 14). There were 1.39 million rides over the most recent 12 months, **up 8.6%** compared with the previous 12 months.

RTC RAPID Lincoln Line

- This month, there were 37,325 rides on the Lincoln Line **down 6.0%** compared with last year. Productivity at 25.3 rides per service hour is **down 5.6%** compared with last year.
- Ridership for both the Lincoln Line and Route 11 was 91,699 **up 20%** compared with last year (page 16). There were 1 million rides for the most recent 12 months, **up 31%** compared with the previous 12 months.

RTC REGIONAL CONNECTOR Carson Line

- There were 1,720 rides this month, **down 7.3%** compared with last June (page 18). At 6.4 rides per service hour, productivity is **down 4.1%** compared with last year. There were 20,169 rides for the most recent 12 months, **up 7.5%** compared with the previous 12 months.

RTC TMCC and UNR Education Pass

- There were 7,516 UNR Ed-Pass rides, **up 10%** compared with last year (page 20).
- There were 6,384 TMCC Ed-Pass rides, **up 49%** compared with last year.

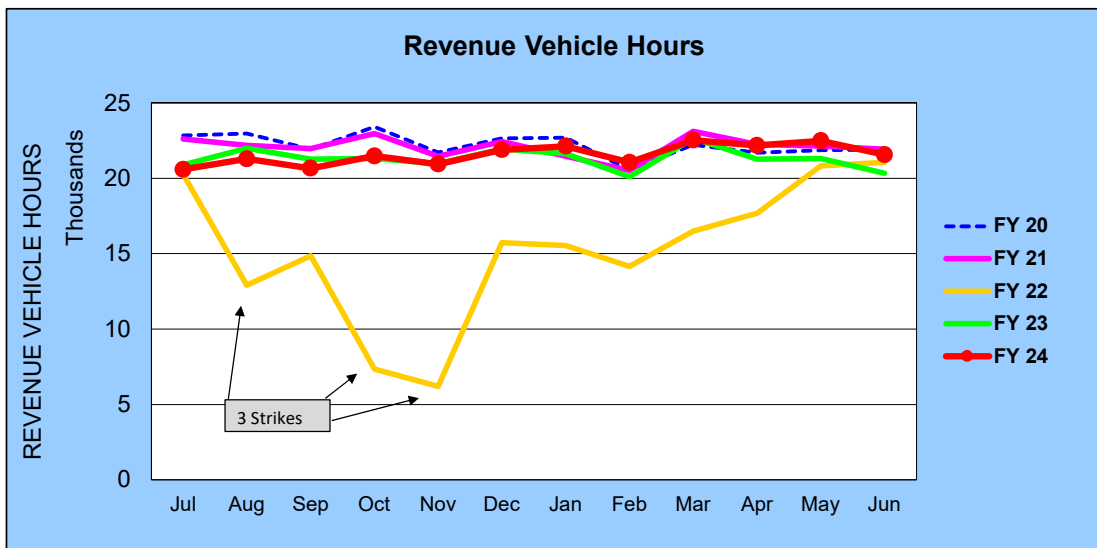
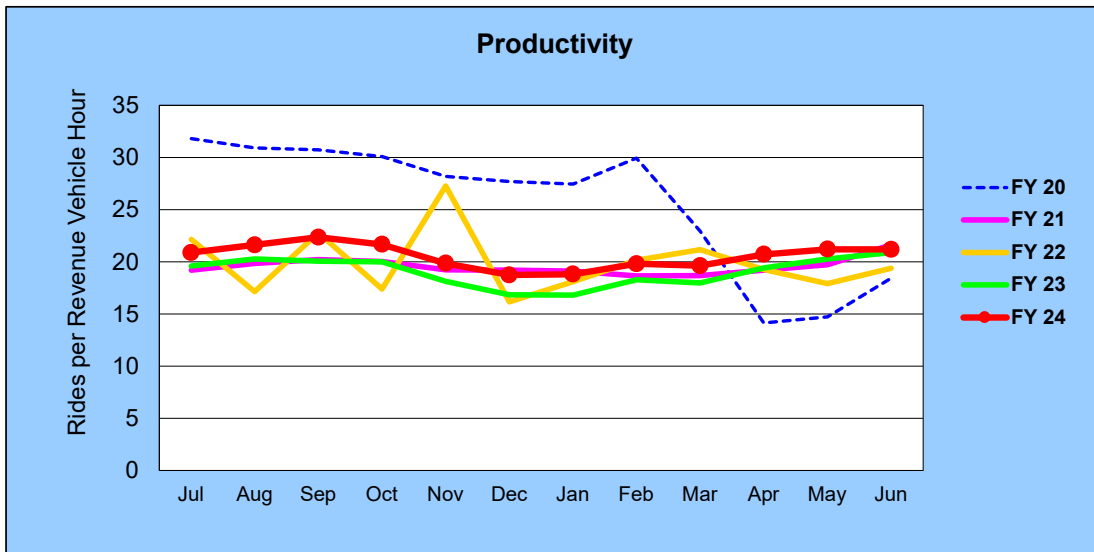
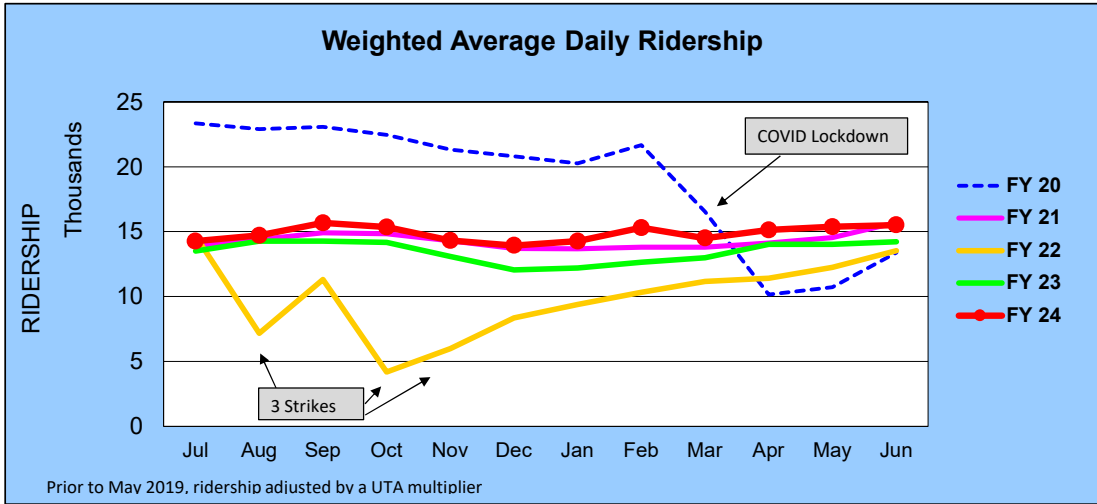
RTC Transit Operating Statistics

RTC Transit Fixed Route Bus						
Rolling 12-Month Ridership Comparison						
Most Recent 12 Months			Percent Change	Previous 12 Months		
Month	Year	Ridership		Month	Year	Ridership
Jul		429,718	4.9%	Jul		409,457
Aug		460,384	3.2%	Aug		445,976
Sep		461,670	8.2%	Sep		426,698
Oct		465,243	9.2%	Oct		426,167
Nov		415,646	9.4%	Nov		380,081
Dec		410,240	11.0%	Dec		369,598
Jan	2024	416,157	14.6%	Jan	2023	363,174
Feb		417,018	13.5%	Feb		367,575
Mar		442,102	8.6%	Mar		407,074
Apr		459,351	11.3%	Apr		412,674
May		476,695	10.3%	May		432,170
Jun		456,808	7.5%	Jun		425,106
TOTAL		5,311,032	9.2%	TOTAL		4,865,750

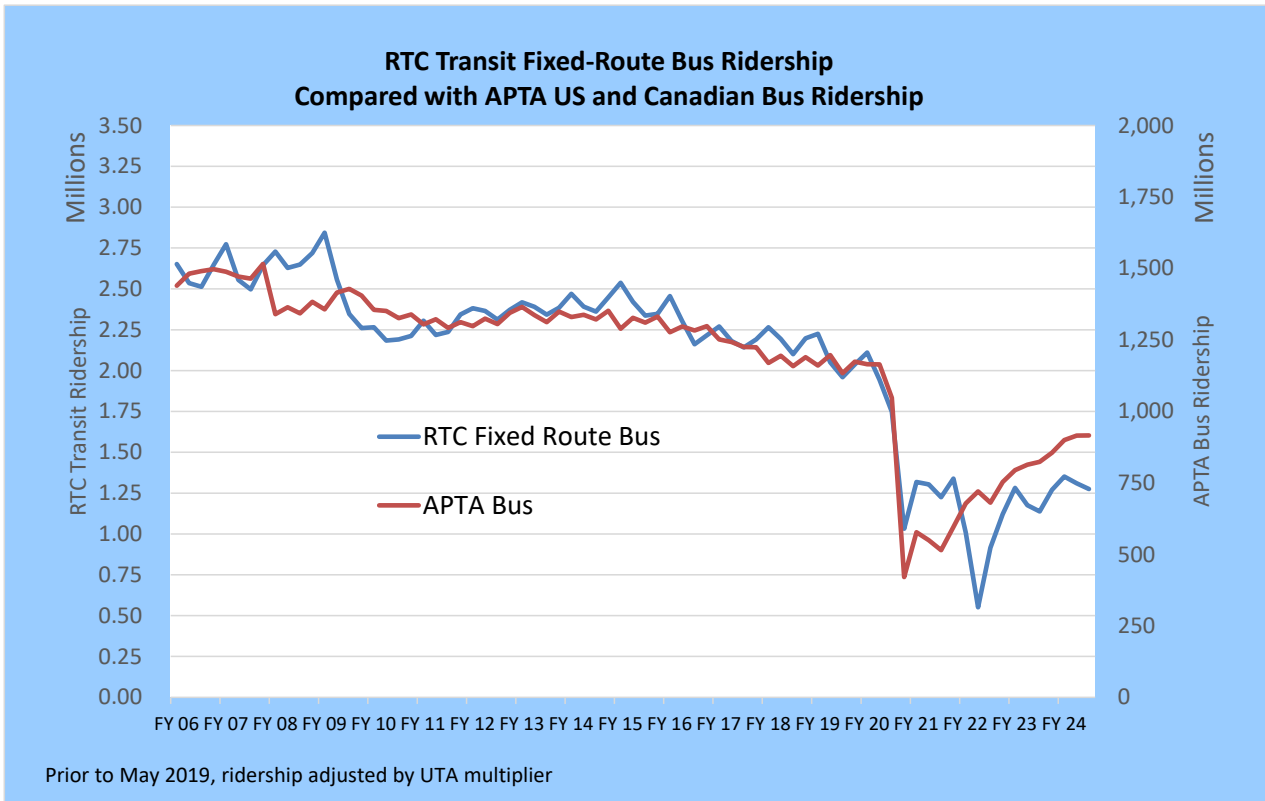
RTC Transit includes RTC RIDE, RTC RAPID, & RTC REGIONAL CONNECTOR

RTC Transit Fixed Route Bus

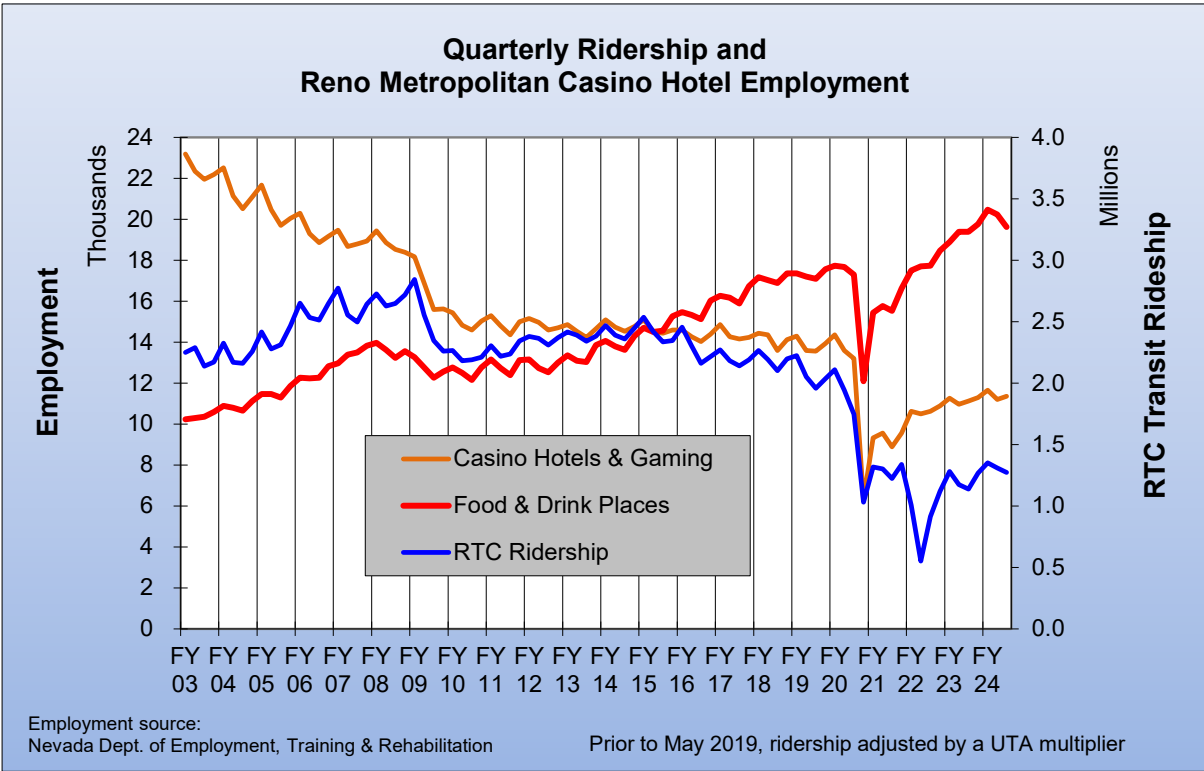
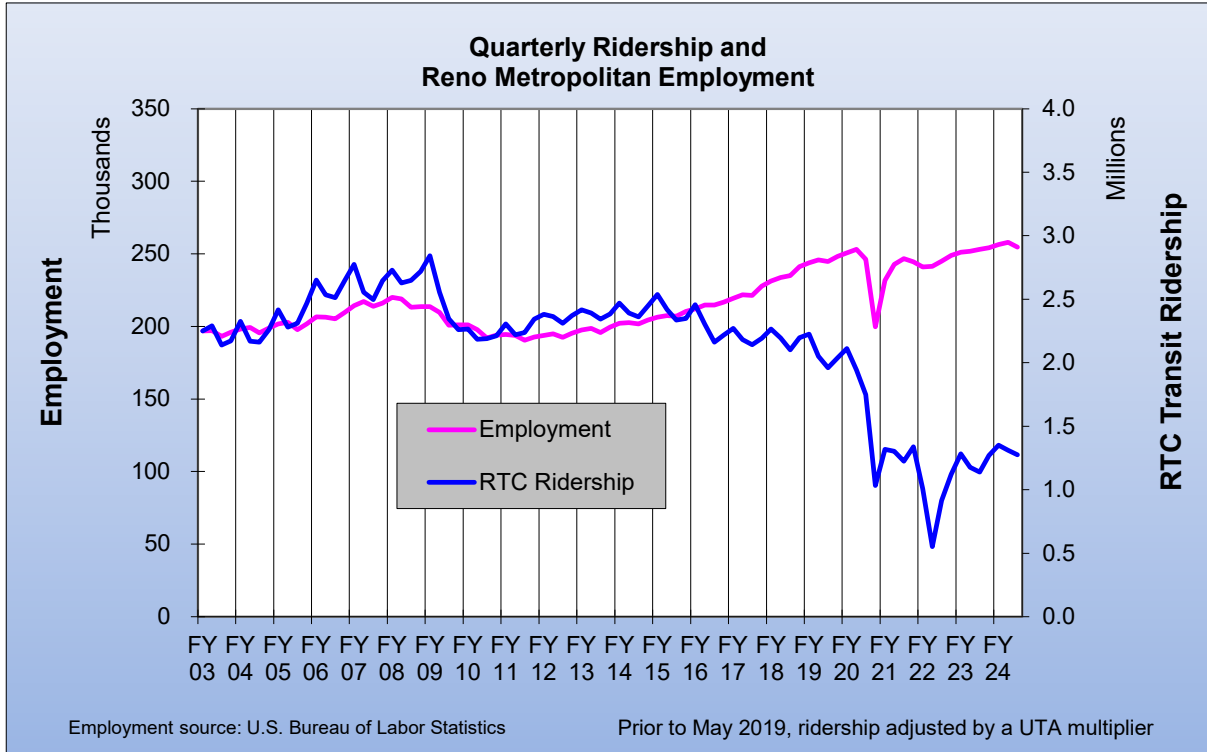
FISCAL YEAR COMPARISONS



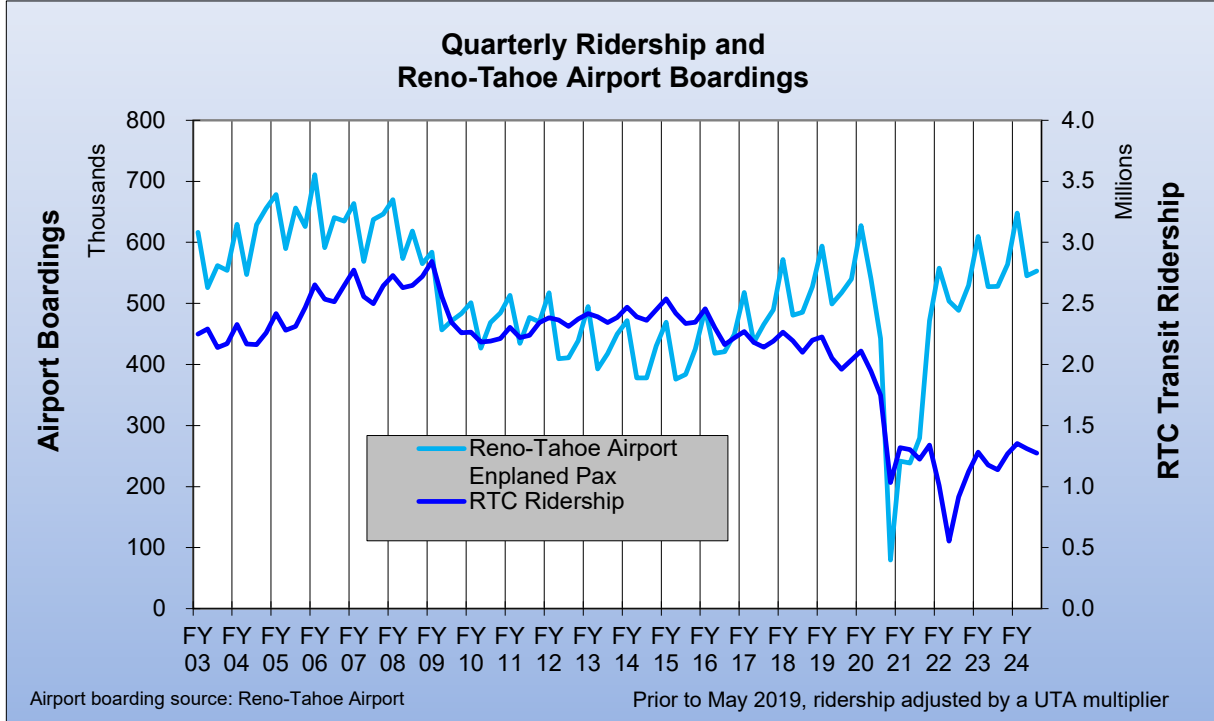
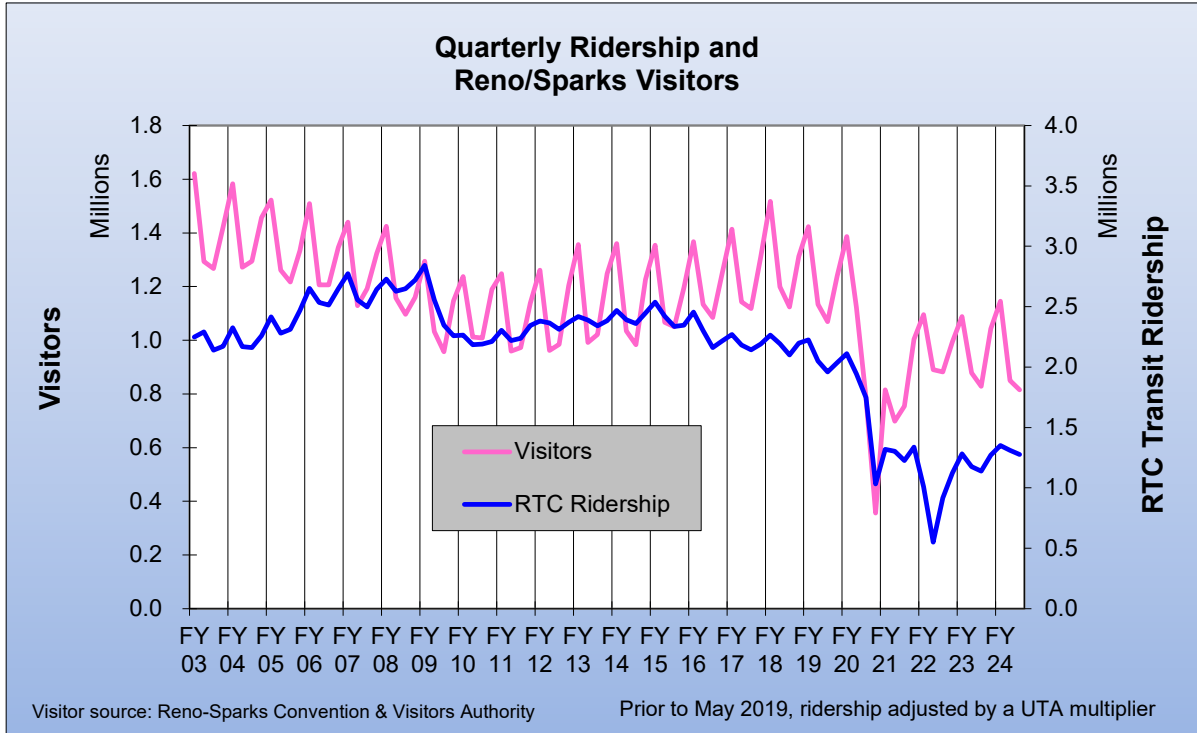
RTC Transit Fixed-Route Bus						
Weighted Average Daily Ridership						
Rolling 12-Month Ridership Comparison						
Most Recent 12 Months			Percent Change	Previous 12 Months		
Month	Year	Ridership		Month	Year	Ridership
Jul		14,257	5.5%	Jul		13,510
Aug		14,698	3.1%	Aug		14,259
Sep		15,675	9.7%	Sep		14,286
Oct		15,353	8.4%	Oct		14,157
Nov		14,320	9.4%	Nov		13,086
Dec		13,931	15.6%	Dec		12,049
Jan	2024	14,262	17.1%	Jan	2023	12,184
Feb		15,294	21.0%	Feb		12,638
March		14,500	11.7%	March		12,981
Apr		15,129	7.9%	Apr		14,016
May		15,373	9.7%	May		14,008
Jun		16,157	13.6%	Jun		14,227



RTC Transit Fixed-Route Bus



RTC Transit Fixed-Route Bus



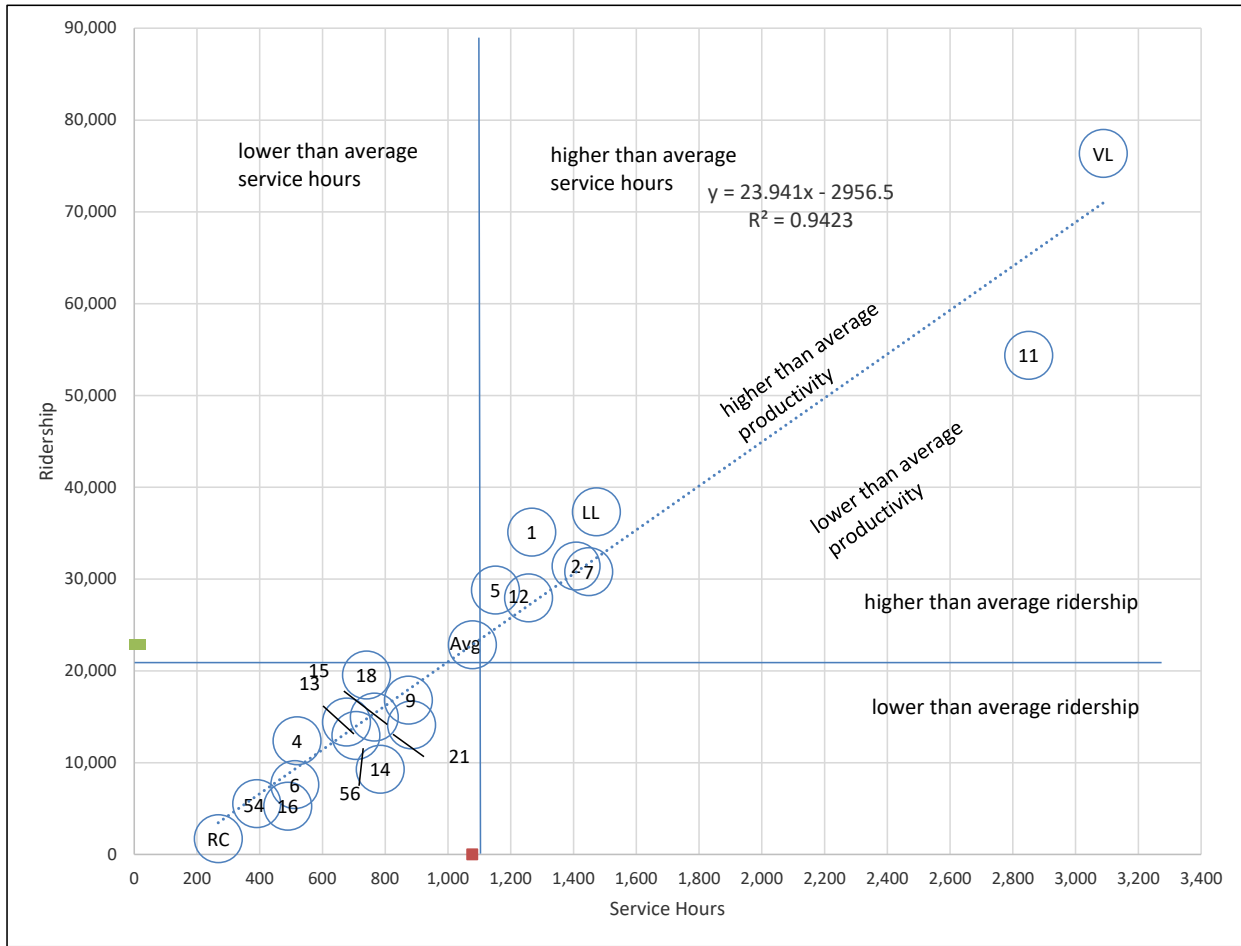
RTC Route Comparison Report

Jun 2024

Route *	Productivity	Route	Svs Hours Change Fr. Last Year	Route	Ridership	Route	Ridership Change From Last Year
1	27.7	11	54.0%	RAP VL	76,364	11	48.6%
18	26.4	12	35.8%	11	54,374	16	26.1%
RAP LL	25.3	56	21.5%	RAP LL	37,325	7	25.3%
5	25.0	TOTAL	6.0%	1	35,115	12	22.2%
RAP VL	24.7	21	5.2%	2	31,420	13	19.2%
4	23.9	13	2.3%	7	30,804	6	17.4%
2	22.3	54	0.8%	5	28,809	9	17.3%
12	22.2	16	0.7%	12	27,948	14	16.6%
13	21.3	15	0.5%	18	19,543	56	13.6%
7	21.3	1	-0.2%	9	16,814	15	12.2%
TOTAL	21.2	6	-0.7%	15	14,959	TOTAL	7.5%
15	19.6	RAP LL	-1.0%	13	14,430	54	1.9%
9	19.2	5	-1.1%	21	14,117	1	1.0%
11	19.1	2	-1.3%	56	12,960	RAP VL	-0.8%
56	18.3	RAP VL	-1.4%	4	12,391	4	-1.5%
21	16.0	9	-1.5%	14	9,292	5	-2.1%
6	14.9	14	-1.7%	6	7,611	2	-2.7%
54	14.2	18	-2.7%	54	5,544	21	-6.0%
14	11.8	4	-2.9%	16	5,268	RAP LL	-6.4%
16	10.8	RTC RC	-3.3%	RTC RC	1,720	RTC RC	-7.3%
RTC RC	6.4	7	-8.8%	TOTAL	456,808	18	-15.0%

* - RTC RC is RTC REGIONAL CONNECTOR.

RTC Route Comparison Chart Jun 2024



"higher" and "lower" refer to higher or lower than the average of all routes (not the system average)

RTC TRANSIT OPERATING STATISTICS

Jun 2024

Route	Total Ridership	Previous Year	Change	Vehicle Revenue Hours	Previous Year	Change	Rides/VRH	Previous Year	Change
RAPID VL	76,364	76,972	-0.8%	3,088	3,133	-1.4%	24.7	24.6	0.7%
RAPID LL	37,325	39,894	-6.4%	1,473	1,487	-1.0%	25.3	26.8	-5.5%
1	35,115	34,774	1.0%	1,267	1,269	-0.2%	27.7	27.4	1.2%
2	31,420	32,307	-2.7%	1,408	1,427	-1.3%	22.3	22.6	-1.5%
3									
4	12,391	12,578	-1.5%	519	534	-2.9%	23.9	23.5	1.4%
5	28,809	29,422	-2.1%	1,151	1,164	-1.1%	25.0	25.3	-1.0%
6	7,611	6,484	17.4%	512	515	-0.7%	14.9	12.6	18.2%
7	30,804	24,575	25.3%	1,448	1,589	-8.8%	21.3	15.5	37.5%
9	16,814	14,332	17.3%	874	887	-1.5%	19.2	16.2	19.1%
11	54,374	36,585	48.6%	2,850	1,851	54.0%	19.1	19.8	-3.5%
12	27,948	22,878	22.2%	1,257	925	35.8%	22.2	24.7	-10.1%
13	14,430	12,105	19.2%	677	661	2.3%	21.3	18.3	16.5%
14	9,292	7,970	16.6%	784	798	-1.7%	11.8	10.0	18.6%
15	14,959	13,333	12.2%	765	761	0.5%	19.6	17.5	11.6%
16	5,268	4,178	26.1%	489	486	0.7%	10.8	8.6	25.2%
18	19,543	22,996	-15.0%	740	760	-2.7%	26.4	30.2	-12.7%
21	14,117	15,023	-6.0%	884	840	5.2%	16.0	17.9	-10.7%
26									
54	5,544	5,438	1.9%	390	387	0.8%	14.2	14.0	1.2%
56	12,960	11,407	13.6%	707	581	21.5%	18.3	19.6	-6.5%
RC Carson	1,720	1,855	-7.3%	268	277	-3.3%	6.4	6.7	-4.1%
Misc. Service									
Jun '24	456,808	425,106	7.5%	21,551	20,334	6.0%	21.2	20.9	1.4%
Jun '23	425,106			20,334			20.9		
Perc. Change	7.5%			6.0%			1.4%		

RTC TRANSIT OPERATING STATISTICS

Jun 2024

Route	Vehicle Revenue Miles	Rides/VRM	Est. Gross Operating Cost	Est. Cost Per VRH	Est. Cost Per VRM	Est. Cost Per Ride
RAPID VL	31,959	2.39	\$487,462	\$158	\$15.25	\$6.38
RAPID LL	14,217	2.63	\$232,466	\$158	\$16.35	\$6.23
1	12,519	2.80	\$199,973	\$158	\$15.97	\$5.69
2	14,769	2.13	\$222,269	\$158	\$15.05	\$7.07
3						
4	6,726	1.84	\$81,931	\$158	\$12.18	\$6.61
5	15,414	1.87	\$181,721	\$158	\$11.79	\$6.31
6	4,744	1.60	\$80,826	\$158	\$17.04	\$10.62
7	25,710	1.20	\$228,664	\$158	\$8.89	\$7.42
9	9,868	1.70	\$137,959	\$158	\$13.98	\$8.21
11	30,115	1.81	\$449,977	\$158	\$14.94	\$8.28
12	12,696	2.20	\$198,408	\$158	\$15.63	\$7.10
13	6,228	2.32	\$106,795	\$158	\$17.15	\$7.40
14	7,555	1.23	\$123,803	\$158	\$16.39	\$13.32
15	7,880	1.90	\$120,778	\$158	\$15.33	\$8.07
16	3,380	1.56	\$77,222	\$158	\$22.84	\$14.66
18	8,043	2.43	\$116,811	\$158	\$14.52	\$5.98
21	9,665	1.46	\$139,511	\$158	\$14.43	\$9.88
26						
54	6,269	0.88	\$61,645	\$158	\$9.83	\$11.12
56	10,414	1.24	\$111,543	\$158	\$10.71	\$8.61
RC Carson	8,054	0.21	\$42,307	\$158	\$5.25	\$24.60
Misc. Service						
Jun '24	246,225	1.86	\$3,402,072	\$158	\$13.82	\$7.45
Jun '23	238,881	1.78	\$2,999,940	\$148	\$12.56	\$7.06
Perc. Change	3.1%	4.3%	13.4%	7.0%	10.0%	5.5%

RTC Transit Operating Statistics

Jul '23 - Jun '24

Route	Total Ridership	Previous Year	Change	Vehicle Revenue Hours	Previous Year	Change	Rides/VRH	Previous Year	Change
RAPID VL	972,742	830,807	17%	37,133	38,229	-3%	26.2	21.7	21%
RAPID LL	450,448	404,473	11%	17,735	17,946	-1%	25.4	22.5	13%
1	416,266	448,696	-7%	15,371	17,528	-12%	27.1	25.6	6%
2	373,161	346,350	8%	17,110	17,439	-2%	21.8	19.9	10%
2s									
3	0	110,826		0	5,464				
3CC									
4	148,690	130,852	14%	6,370	6,391	0%	23.3	20.5	14%
5	336,788	314,461	7%	14,177	14,159	0%	23.8	22.2	7%
6	84,987	70,913	20%	6,250	5,765	8%	13.6	12.3	11%
7	337,486	317,807	6%	17,821	19,054	-6%	18.9	16.7	14%
9	182,650	138,850	32%	10,674	12,112	-12%	17.1	11.5	49%
11	570,461	377,761	51%	32,784	14,584	125%	17.4	25.9	-33%
12	297,781	271,702	10%	14,489	15,204	-5%	20.6	17.9	15%
13	158,456	133,521	19%	8,211	8,094	1%	19.3	16.5	17%
14	108,019	91,501	18%	9,601	8,284	16%	11.3	11.0	2%
15	170,919	147,113	16%	9,321	9,525	-2%	18.3	15.4	19%
16	57,931	50,858	14%	5,968	4,727	26%	9.7	10.8	-10%
18	244,151	252,382	-3%	9,100	9,864	-8%	26.8	25.6	5%
19									
21	163,893	132,925	23%	10,160	7,797	30%	16.1	17.0	-5%
26	0	91,517		0	6,975			13.1	
54	68,107	66,367	3%	4,771	5,709	-16%	14.3	11.6	23%
56	147,927	117,307	26%	8,344	7,412	13%	17.7	15.8	12%
RC Carson	20,169	18,761	8%	3,309	3,376	-2%	6.1	5.6	10%
Misc. Service									
Current 12 Months	5,311,032	4,865,750	9.2%	258,698	255,637	1.2%	20.5	19.0	7.9%
Previous 12 Months	4,865,750			255,637			19.0		
Perc. Change	9.2%			1.2%			7.9%		

RTC Transit Operating Statistics

Jul '23 - Jun '24

Route	Vehicle Revenue Miles (thousand)	Rides/VRM	Est. Gross Operating Cost (thousand)	Est. Cost Per VRH	Est. Cost Per VRM	Est. Cost Per Ride
RAPID VL	349.0	2.79	\$5,862	\$158	\$16.80	\$6.03
RAPID LL	171.4	2.63	\$2,800	\$158	\$16.33	\$6.22
1	151.7	2.74	\$2,427	\$158	\$15.99	\$5.83
2	179.5	2.08	\$2,701	\$158	\$15.05	\$7.24
2s						
3						
3CC						
4	82.2	1.81	\$1,006	\$158	\$12.23	\$6.76
5	194.8	1.73	\$2,238	\$158	\$11.49	\$6.65
6	57.9	1.47	\$987	\$158	\$17.03	\$11.61
7	310.8	1.09	\$2,813	\$158	\$9.05	\$8.34
9	120.3	1.52	\$1,685	\$158	\$14.01	\$9.23
11	350.8	1.63	\$5,175	\$158	\$14.75	\$9.07
12	154.5	1.93	\$2,287	\$158	\$14.80	\$7.68
13	75.2	2.11	\$1,296	\$158	\$17.23	\$8.18
14	92.5	1.17	\$1,516	\$158	\$16.38	\$14.03
15	96.4	1.77	\$1,471	\$158	\$15.27	\$8.61
16	40.1	1.45	\$942	\$158	\$23.50	\$16.26
18	98.9	2.47	\$1,437	\$158	\$14.53	\$5.88
19						
21	111.3	1.47	\$1,604	\$158	\$14.41	\$9.79
26	0.0		\$0			
54	76.6	0.89	\$753	\$158	\$9.83	\$11.06
56	122.9	1.20	\$1,317	\$158	\$10.72	\$8.90
RC Carson	99.8	0.20	\$522	\$158	\$5.23	\$25.90
Misc. Service						
Current 12 Months	2,939.4	1.81	\$40,839	\$158	\$13.89	\$7.69
Previous 12 Months	2,767.2	1.76	\$37,714	\$148	\$13.63	\$7.75
Perc. Change	6.2%	2.8%	8.3%	7.0%	1.9%	-0.8%

June

Jul 2023 - Jun 2024

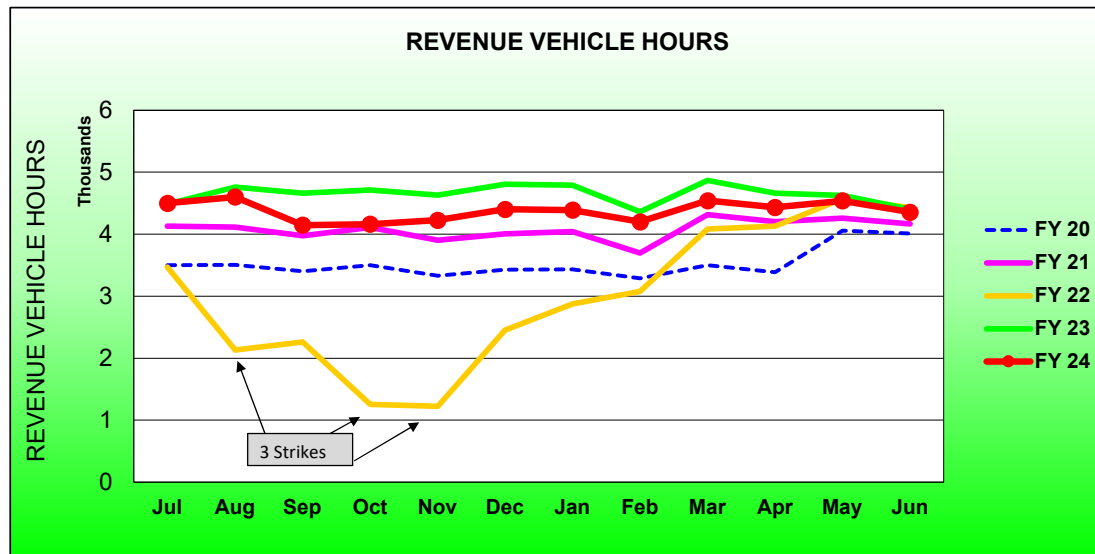
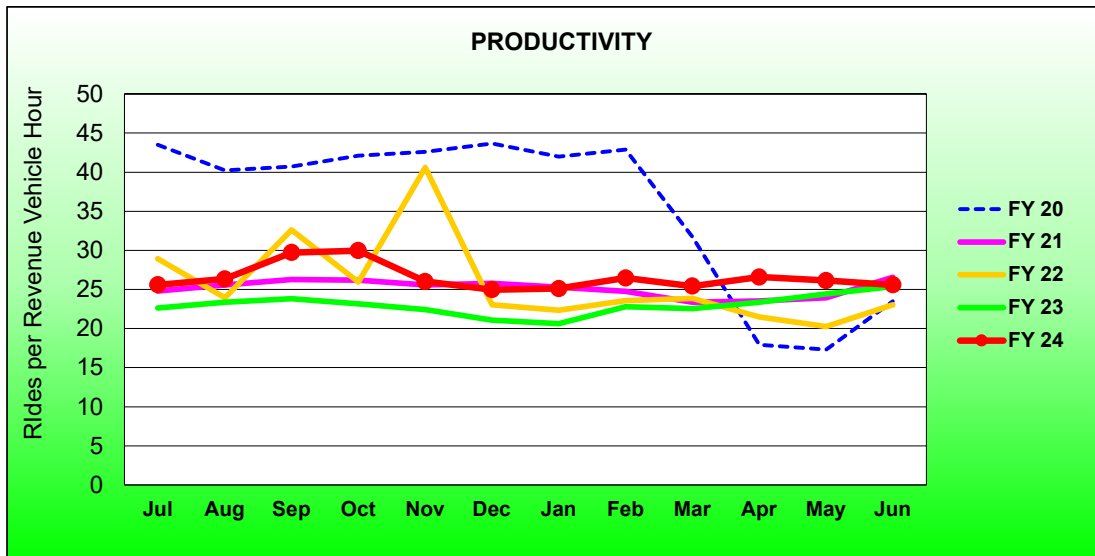
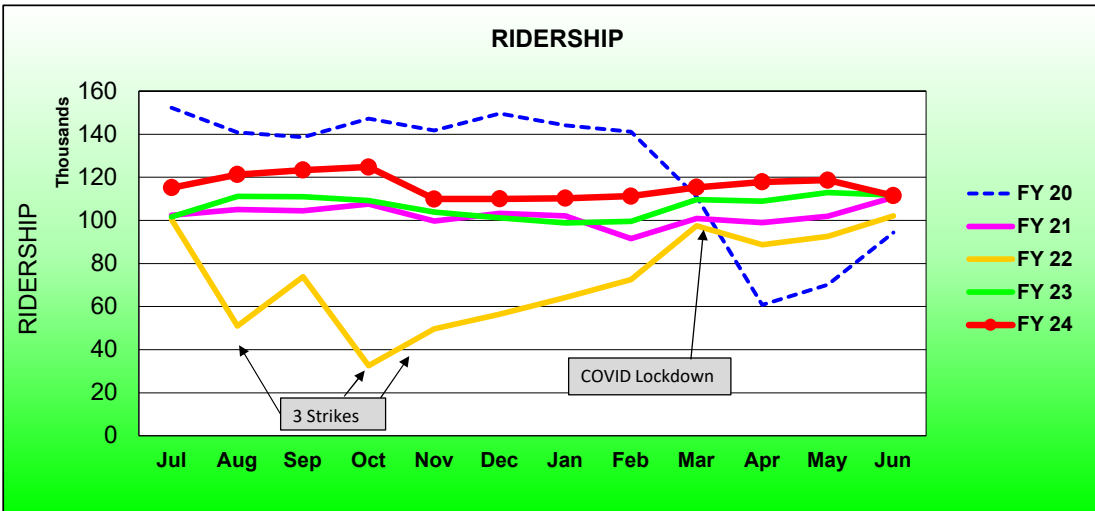
	2024	2023	Percent Change	Current 12 Months	Previous 12 Month	Percent Change
Single Ride Cash						
Full Fare	3,734	5,556	-33%	50,134	65,915	-24%
Reduced*	5,476	7,547	-27%	72,043	100,713	-28%
RTC ACCESS ID	360	321	12.1%	3,859	4,471	-14%
Total	9,570	13,424	-29%	126,036	171,099	-26%
Day Pass Cash						
Full Fare	57,760	61,778	-7%	615,590	766,387	-20%
Reduced*	66,818	69,795	-4.3%	756,783	880,787	-14.1%
Total	124,578	131,573	-5.3%	1,372,373	1,647,174	-17%
Pre-Purchase Period Pass						
Full Fare	117,564	109,740	7%	1,235,141	1,138,241	9%
Reduced*	151,625	126,462	20%	1,547,605	1,364,940	13%
Total	269,189	236,202	14%	2,782,746	2,503,181	11%
Transfers	289	156	85%	2,201	2,909	-24%
Flow Through	4,135	7,278	-43%	54,267	62,747	-13.5%
Free Rides	25,270	22,266	13%	287,287	291,301	-1%
U/Ed-Pass Free Rides	20,848	11,125	87%	194,277	149,825	30%
Stored Ride Pass	2,930	3,082	-4.9%	34,867	37,514	-7.1%
Full Fare	193,368	192,138	0.6%	2,067,575	2,147,515	-3.7%
Reduced*	263,294	232,866	13%	2,785,011	2,716,812	3%
Total Ridership	456,808	425,106	10.3%	5,311,032	4,865,750	9.2%
Previous 12 Months	425,106	408,079		4,865,750		
Change	7.5%	4.2%		9.2%		
Vehicle Revenue Hours	21,551	20,334	5.5%	258,698	255,637	1.2%
Previous 12 Months	20,334	21,058		255,637		
Change	6.0%	-3.4%		1.2%		
Rides / VRH	21.2	20.9	4.5%	20.5	19.0	7.9%
Previous 12 Months	20.9	19.4		19.0		
Change	1.4%	7.9%		7.9%		
Vehicle Revenue Miles	246,225	238,881	4.3%	2,939,440	2,767,225	6.2%
Rides / VRM	1.86	1.78	5.8%	1.81	1.76	2.8%
Est. Gross Operating Cost	\$3,402,072	\$2,999,940	12.9%	\$40,838,828	\$37,714,154	8.3%
Est. Cost Per VRH	\$158	\$148	7.0%	\$157.86	\$147.53	6.9%
Est. Cost Per VRM	\$13.82	\$12.56	8.3%	\$13.89	\$13.63	1.9%
Est. Cost Per Ride	\$7.45	\$7.06	2.4%	\$7.69	\$7.75	-0.8%

* - Reduced fare includes Youth, Senior, Disabled, and US Veterans

RTC RAPID Virginia Line and Route 1						
ROLLING 12-MONTH COMPARISON						
Most Recent 12 Months			Percent Change	Previous 12 Months		
Month	Year	Ridership		Month	Year	Ridership
Jul		115,149	13%	Jul		101,575
Aug		121,197	9.1%	Aug		111,109
Sep		123,298	11.1%	Sep		111,004
Oct		124,715	14.2%	Oct		109,180
Nov		109,893	5.8%	Nov		103,868
Dec		109,966	8.6%	Dec		101,252
Jan	2024	110,229	11.6%	Jan	2023	98,740
Feb		111,239	11.8%	Feb		99,491
March		115,379	5.2%	March		109,639
Apr		117,811	8.1%	Apr		108,968
May		118,653	5.1%	May		112,931
Jun		111,479	-0.2%	Jun		111,746
TOTAL		1,389,008	8.6%	TOTAL		1,279,503

* - Strikes occurred Aug 3-13, Sep 27-Oct 20, Nov 9-Dec 3, 2021

RTC RAPID Virginia Line and Route 1 Fiscal Year Comparisons



RTC RAPID Lincoln Line and Route 11						
Rolling 12-Month Comparison						
Most Recent 12 Months			Percent Change	Previous 12 Months		
Month	Year	Ridership		Month	Year	Ridership
Jul		81,268	27%	Jul		64,207
Aug		85,588	26%	Aug		67,878
Sep		86,016	24%	Sep		69,592
Oct		86,638	30%	Oct		66,800
Nov		76,791	32%	Nov		58,346
Dec		77,855	30%	Dec		59,985
Jan	2024	82,348	37%	Jan	2023	60,272
Feb		81,020	43%	Feb		56,669
Mar		86,512	34%	Mar		64,370
Apr		90,650	43%	Apr		63,439
May		94,524	27%	May		74,197
Jun		91,699	20%	Jun		76,479
TOTAL		1,020,909	31%	TOTAL		782,234

RTC Transit Operating Statistics

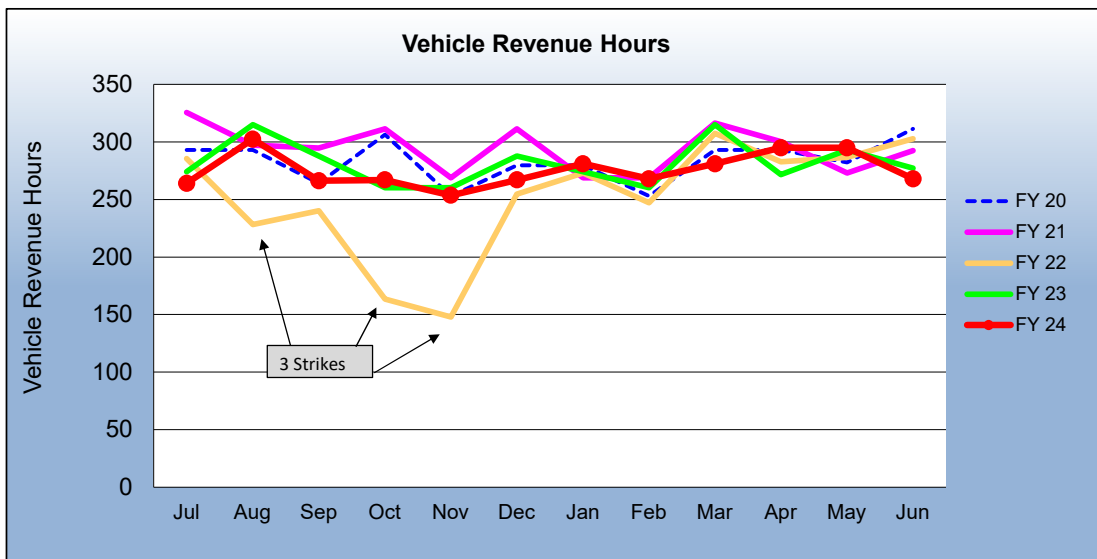
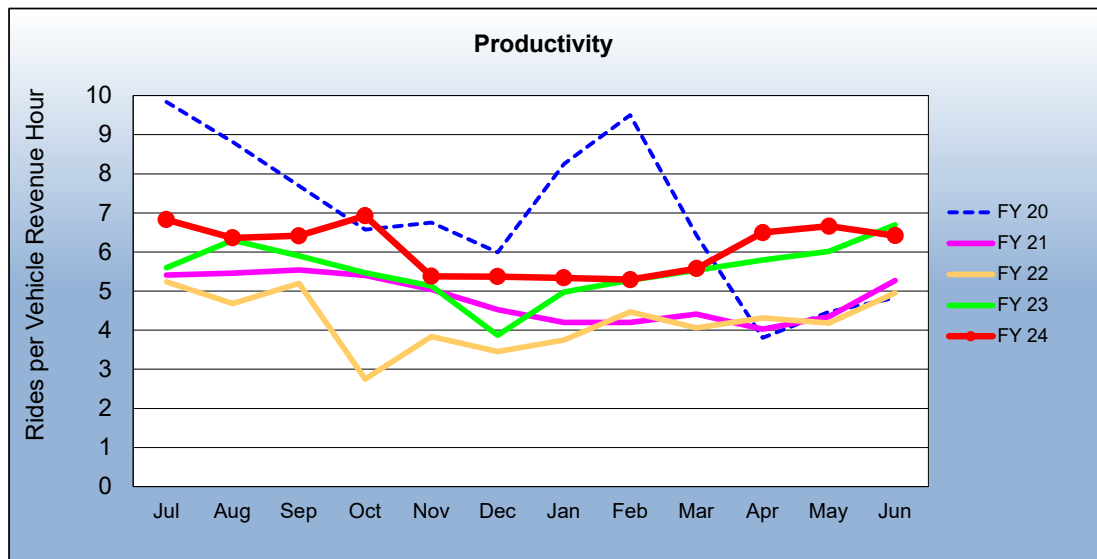
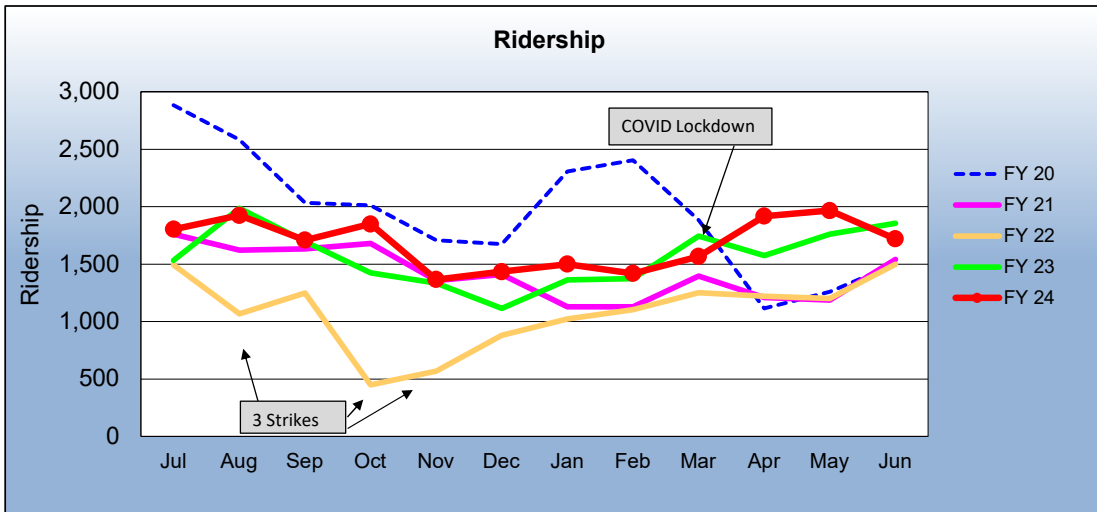
RTC RAPID Virginia & Lincoln Lines						
ROLLING 12-MONTH COMPARISON						
Most Recent 12 Months			Percent Change	Previous 12 Months		
Month	Year	Ridership		Month	Year	Ridership
Jul		120,564	27%	Jul		94,642
Aug		128,312	22%	Aug		104,983
Sep		127,255	20%	Sep		105,807
Oct		127,380	25%	Oct		101,939
Nov		111,741	14%	Nov		98,227
Dec		112,141	18%	Dec		94,884
Jan	2024	111,384	17%	Jan	2023	94,823
Feb		111,895	17%	Feb		95,606
Mar		116,399	10%	Mar		105,699
Apr		120,299	14%	Apr		105,548
May		122,131	5.1%	May		116,256
Jun		113,689	-2.7%	Jun		116,866
TOTAL		1,423,190	15%	TOTAL		1,235,280

* - Strikes occurred Aug 3-13, Sep 27-Oct 20, Nov 9-Dec 3, 2021

RTC REGIONAL CONNECTOR - Carson Line						
Rolling 12 Month Comparison						
Most Recent 12 Months			Percent Change	Previous 12 Months		
Month	Year	Ridership		Month	Year	Ridership
Jul		1,802	17%	Jul		1,534
Aug		1,924	-3.1%	Aug		1,985
Sep		1,708	0.6%	Sep		1,697
Oct		1,849	30%	Oct		1,424
Nov		1,365	2.2%	Nov		1,335
Dec		1,434	28.8%	Dec		1,113
Jan	2024	1,500	10.0%	Jan	2023	1,364
Feb		1,419	3.3%	Feb		1,374
Mar		1,567	-10.1%	Mar		1,743
Apr		1,916	21.7%	Apr		1,575
May		1,965	11.5%	May		1,762
Jun		1,720	-7.3%	Jun		1,855
TOTAL		20,169	7.5%	TOTAL		18,761

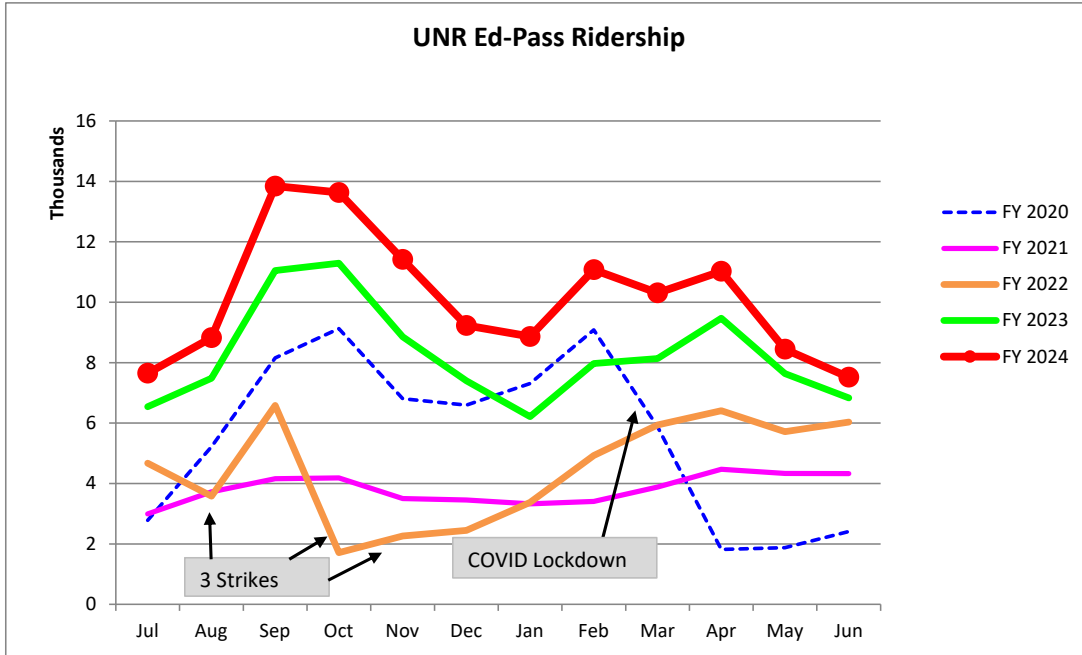
* - Strikes occurred Aug 3-13, Sep 27-Oct 20, Nov 9-Dec 3, 2021

RTC REGIONAL CONNECTOR Carson Line Fiscal Year Comparisons



**RTC Transit Fixed Route Bus Ridership Report
University of Nevada, Reno Ed-Pass Program
FY 2024**

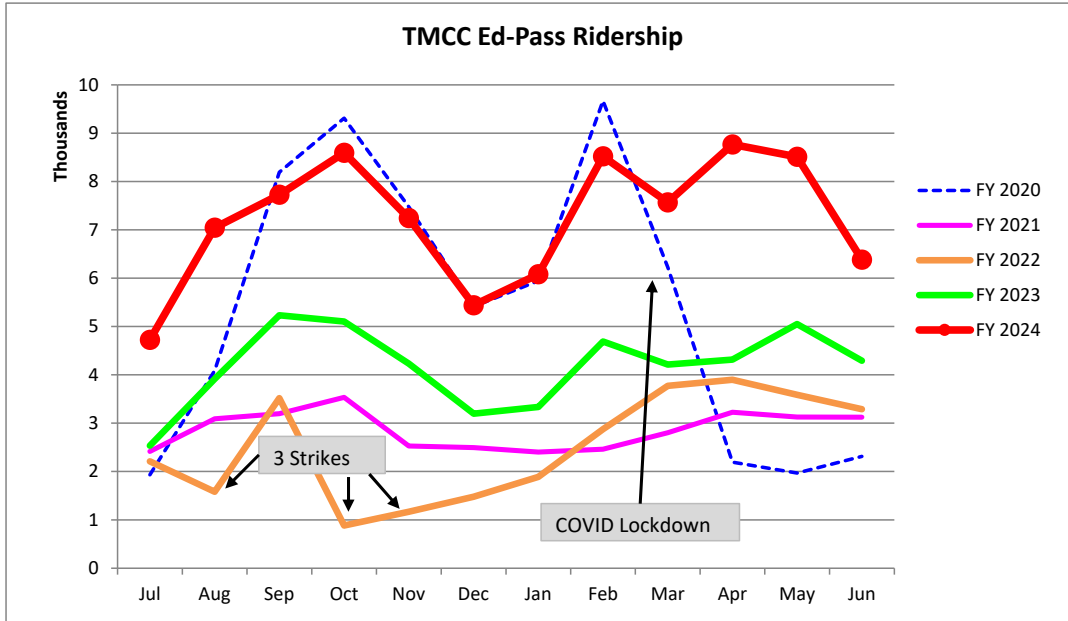
Category	Jul	Aug	Sep	Oct	Nov	Dec	Jan	Feb	Mar	Apr	May	Jun	FYTD
FY 2020	2,779	5,218	8,159	9,127	6,808	6,592	7,312	9,084	5,873	1,818	1,877	2,410	67,057
FY 2021	2,991	3,723	4,156	4,185	3,502	3,455	3,329	3,409	3,881	4,471	4,333	4,330	45,765
FY 2022	4,670	3,581	6,584	1,710	2,264	2,447	3,376	4,924	5,936	6,410	5,716	6,033	53,651
FY 2023	6,539	7,482	11,046	11,291	8,857	7,399	6,215	7,973	8,138	9,470	7,640	6,833	98,883
Percent Change	17%	18%	25%	21%	29%	25%	43%	39%	27%	16%	11%	10%	
FY 2024	7,650	8,824	13,841	13,631	11,414	9,231	8,864	11,077	10,309	11,024	8,445	7,516	121,826



Fiscal Year	Rides
FY 2003	51,228
FY 2004	55,114
FY 2005	69,685
FY 2006	88,070
FY 2007	85,295
FY 2008	86,461
FY 2009	88,385
FY 2010	79,518
FY 2011	75,925
FY 2012	75,300
FY 2013	50,438
FY 2014	40,854
FY 2015	41,778
FY 2016	50,022
FY 2017	40,581
FY 2018	34,154
FY 2019	30,251
U-Pass:	
FY 2020	67,057
FY 2021	45,765
FY 2022	53,651
FY 2023	98,883

**RTC Transit Fixed Route Bus Ridership Report
Truckee Meadows Community Ed-Pass Program
FY 2024**

Category	Jul	Aug	Sep	Oct	Nov	Dec	Jan	Feb	Mar	Apr	May	Jun	FYTD
FY 2020	1,933	4,086	8,193	9,311	7,479	5,413	5,945	9,668	6,227	2,193	1,968	2,310	64,726
FY 2021	2,414	3,090	3,194	3,535	2,527	2,493	2,402	2,459	2,800	3,225	3,126	3,124	34,389
FY 2022	2,208	1,584	3,516	883	1,170	1,480	1,886	2,875	3,773	3,899	3,585	3,287	30,146
FY 2023	2,533	3,913	5,233	5,103	4,231	3,195	3,335	4,690	4,213	4,314	5,051	4,292	50,103
Percent Change	87%	80%	48%	68%	71%	70%	82%	82%	80%	103%	68%	49%	
FY 2024	4,725	7,045	7,727	8,596	7,244	5,440	6,081	8,520	7,569	8,768	8,510	6,384	86,609



Fiscal Year	Rides
FY 2013	90,583
FY 2014	113,700
FY 2015	94,112
FY 2016	83,375
FY 2017	66,110
FY 2018	53,027
FY 2019	37,191

Ed-Pass:	Rides
FY 2020	64,726
FY 2021	34,389
FY 2022	30,146
FY 2023	50,103