



**REGIONAL TRANSPORTATION COMMISSION**  
*Public Transportation • Streets and Highways • Planning*



# **RTC Transit Fixed Route Bus Operating Statistics**

**RTC RIDE  
RTC RAPID  
RTC REGIONAL CONNECTOR**

**August 2024**

**RTC Transit Fixed Route Bus Operating Statistics Report**

TABLE OF CONTENTS

RTC Transit Fixed Route Bus Highlights..... Page ii

RTC Transit Fixed Route Bus Summary ..... Page iv

System Reports.....Page 1

Economic Data .....Page 5

Route Comparison Data.....Page 7

Monthly Operating Statistics.....Page 9

RTC RAPID Virginia Line & Route 1 .....Page 14

RTC RAPID Lincoln Line & Route 11 .....Page 16

RTC REGIONAL CONNECTOR Carson Line .....Page 18

RTC TMCC and UNR Education Pass.....Page 20

# RTC Transit Fixed Route Bus Highlights

## August 2024

### RTC Transit Fixed Route Bus

- There was a service change effective May 4th. The outbound line-of-route adjusted for Route 13. Sunday service frequency increased during the midday hours for Route 21. Services extended for Virginia Line. Holiday levels of services adjusted.
- For the month of August, there were 510,365 rides, **up 10.9%** compared with last year (page 1). Weighted average daily ridership was 16,462, **up 12.0%** compared with last year (page 3).
- For the most recent 12 months, there were 5.41 million rides **up 10.4%** compared with the previous 12 months.
- In August, there were 22,606 service hours, **up 6.2%** compared with last year (page 9).
- Productivity was 22.6 rides per service hour, **up 4.4%** compared with last year (page 9).

### External Impacts on Ridership

- The average temperature this month was 74.5° F, 1.7° F lower compared with last year.
- The Reno-Sparks area preliminary unemployment rate in July was 5.1%. Unemployment has been gradually trending upward since a low of 2.8% in December 2021.
- Nevada's preliminary unemployment rate for July was 5.4%. The national unemployment rate for July was 4.2%.

## Historical Impacts Causing a Downward Trend in Bus Ridership

- According to Bureau of Labor Statistics, 27% of US employees worked remotely at least part of the time in 2023, with several academic surveys suggesting it is closer to 50%\*.
- In April 2022, the City of Reno entered an agreement with Bird electric scooters to serve Reno.
- In 2021, Keolis transit workers went on strike August 3 to 13, September 27 to October 20, and November 9 to December 3. Limited service was provided on Routes 1, 7, and 11 and RTC REGIONAL CONNECTOR to Carson City. RTC provided free rides on RIDE, FlexRIDE, taxis, and UberX during the second and third strikes.
- A combination of the pandemic, stimulus checks, easy car financing, and gig jobs requiring cars has likely resulted in a large number of people abandoning transit for car ownership.
- In response to the COVID-19 pandemic, Governor Sisolak ordered the shutdown of casinos and other nonessential businesses in March 2020. In May 2020, Governor Sisolak reopened a number of businesses including bars, salons, gyms, and retail. Casinos were allowed to reopen in June 2020. In May 2021, maximum business capacity increased to 100% in Washoe County.
- There has been an increase in people working primarily from home, approximately eight million in 2018 according to US Census Bureau estimates, taking over transit as the second most common means of getting to work.
- While employment has increased in the region, the makeup of local employment has significantly changed. When Reno was a tourism and gaming town, a large portion of employment was in the low-wage, service industry whereas recently jobs tend to be higher wage and geographically dispersed requiring cars.
- Uber started permanent service in Reno in 2015 and Lyft started shortly after.
- As of 2014, Nevada provides driver's licenses for people who are undocumented immigrants.
- As downtown and midtown areas in-fill and gentrify, this also pushes lower income people to the suburbs where they are much more likely to need cars. This is a nationwide trend.
- The drop in ridership (before COVID) has been a nationwide trend as illustrated by the chart on page 4 which compares RTC transit ridership with US and Canadian bus ridership.
- With the growth of online shopping and food delivery, it is also likely that bus trips used for shopping and dining out has fallen substantially, especially for those with mobility challenges who would prefer online shopping and food delivery. Also, people without cars may decide to purchase a car with the intention of using the car to deliver food and finance the car.

\* - <https://www.forbes.com/sites/forbesfinancecouncil/2023/11/06/changing-environment-altering-employer-obligations-for-remote-workers/?sh=7c9e531e2145>



## RTC Transit Fixed Route Bus Summary

### Route Ridership

- For August, Route 1 (serving S Virginia St between downtown Reno and Meadowood Mall) had the highest productivity in the system with 29.1 rides per service hour (page 7).
- Route 18 (serving Glendale) came in second with 27.5.
- Route 5 (serving Sutro – Sun Valley) had the third highest productivity with 27.3 rides per service hour.
- Route 11 ridership increased the most over last year by 53.7%. In May 2023, Routes 3 and 26 were eliminated with Route 11 absorbing parts of Routes 3 and 26.
- Route 16 (serving Idlewild) had the second highest increase in ridership at 31.9%.
- Route 12 (serving Terminal - Neil) had the third highest increase in ridership at 22.5%.

### RTC RAPID (Virginia & Lincoln Lines Combined)

- This month, there were 121,538 rides on RTC RAPID **down 5.3%** compared with last year. By comparison, system ridership was up 10.4%. The productivity of RTC RAPID at 25.5 rides per service hour was **down 4.0%** compared with last year. By comparison, system productivity was 22.6 rides per service hour, **up 4.4%** compared with last year.
- There were 1.413 million rides over the most recent 12 months, **up 10%** compared with the previous 12 months.
- RAPID rides now make up 23.8% of system ridership.
- 44.0% of all system rides were taken on RAPID and Routes 1 and 11.

### RTC RAPID Virginia Line

- This month, there were 80,806 rides on the Virginia Line **down 5.1%** compared with last year. Productivity at 25.0 rides per service hour is **down 3.5%** compared with last year.
- Ridership for both the Virginia Line and Route 1 was 118,809 **down 2.0%** compared with last year (page 14). There were 1.39 million rides over the most recent 12 months, **up 6.5%** compared with the previous 12 months.

### RTC RAPID Lincoln Line

- This month, there were 40,732 rides on the Lincoln Line **down 5.6%** compared with last year. Productivity at 26.5 rides per service hour is **down 4.6%** compared with last year.
- Ridership for both the Lincoln Line and Route 11 was 105,967 **up 24%** compared with last year (page 16). There were 1.06 million rides for the most recent 12 months, **up 29%** compared with the previous 12 months.

### RTC REGIONAL CONNECTOR Carson Line

- There were 1,882 rides this month, **down 2.2%** compared with last August (page 18). At 6.4 rides per service hour, productivity is the same as last year. There were 20,076 rides for the most recent 12 months, **up 5.8 %** compared with the previous 12 months.

### RTC TMCC and UNR Education Pass

- There were 13,215 UNR Ed-Pass rides, **up 50%** compared with last year (page 20).
- There were 9,334 TMCC Ed-Pass rides, **up 32%** compared with last year.



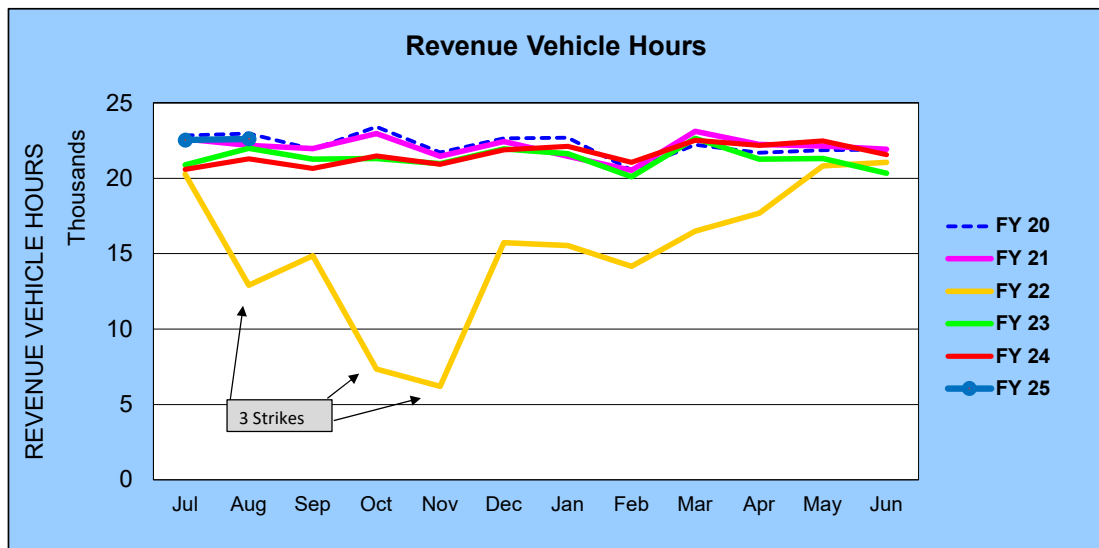
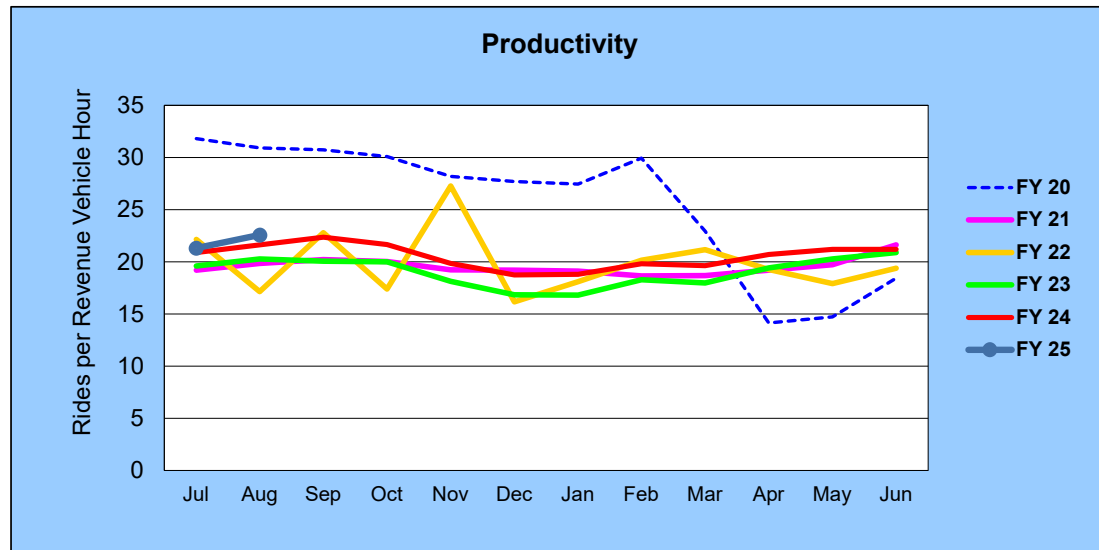
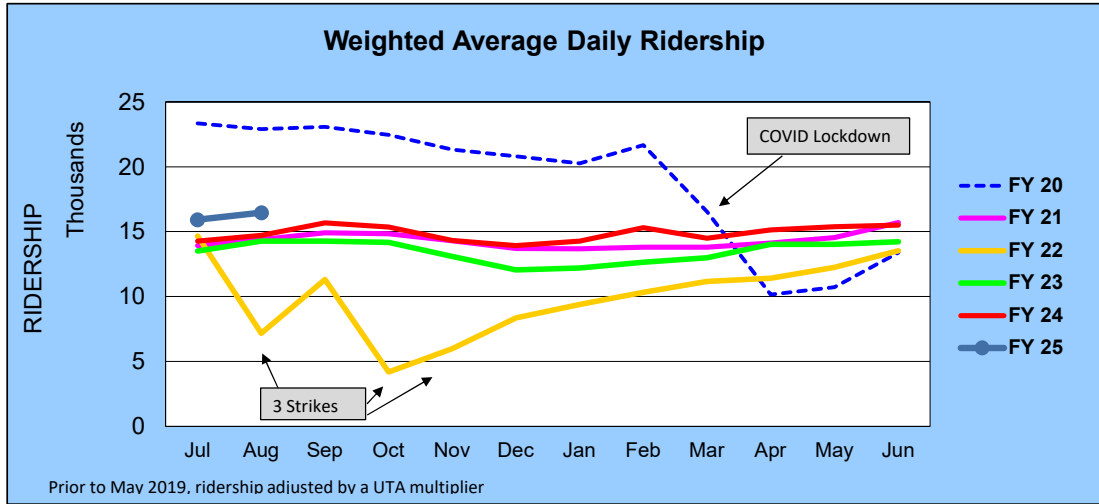
RTC Transit Operating Statistics

<b>RTC Transit Fixed Route Bus</b>						
<b>Rolling 12-Month Ridership Comparison</b>						
<b>Most Recent 12 Months</b>			<b>Percent Change</b>	<b>Previous 12 Months</b>		
<b>Month</b>	<b>Year</b>	<b>Ridership</b>		<b>Month</b>	<b>Year</b>	<b>Ridership</b>
Sep		461,670	8.2%	Sep		426,698
Oct		465,243	9.2%	Oct		426,167
Nov		415,646	9.4%	Nov		380,081
Dec		410,240	11.0%	Dec		369,598
Jan	2024	416,157	14.6%	Jan	2023	363,174
Feb		417,018	13.5%	Feb		367,575
Mar		442,102	8.6%	Mar		407,074
Apr		459,351	11.3%	Apr		412,674
May		476,695	10.3%	May		432,170
Jun		456,808	7.5%	Jun		425,106
Jul		480,395	11.8%	Jul		429,718
Aug		510,365	10.9%	Aug		460,384
<b>TOTAL</b>		<b>5,411,690</b>	<b>10.4%</b>	<b>TOTAL</b>		<b>4,900,419</b>

RTC Transit includes RTC RIDE, RTC RAPID, & RTC REGIONAL CONNECTOR

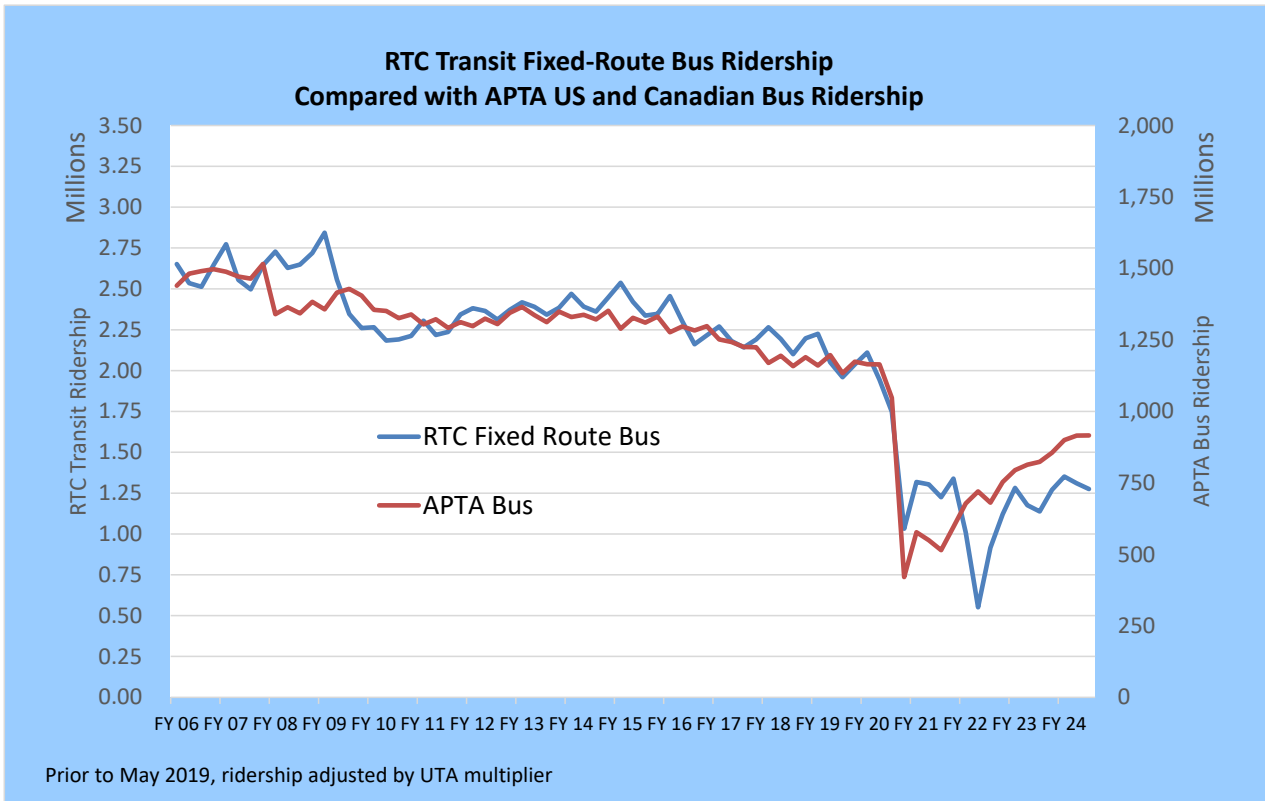
# RTC Transit Fixed Route Bus

## FISCAL YEAR COMPARISONS

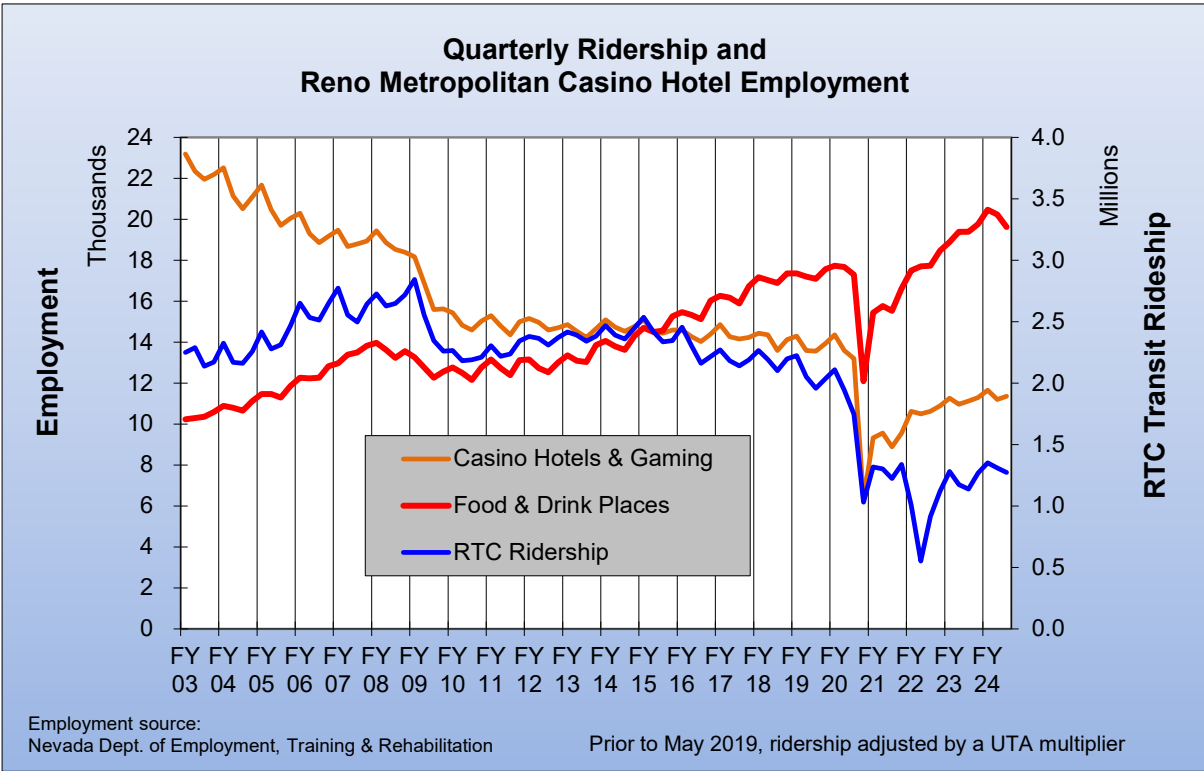
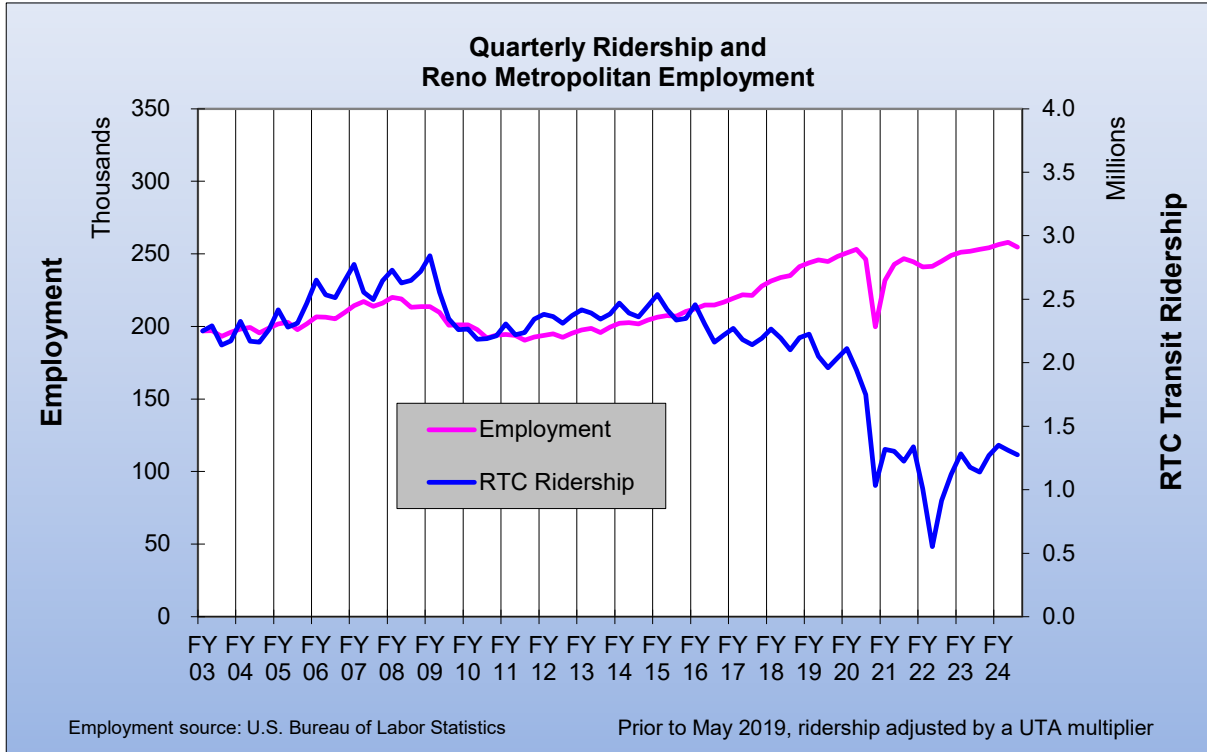




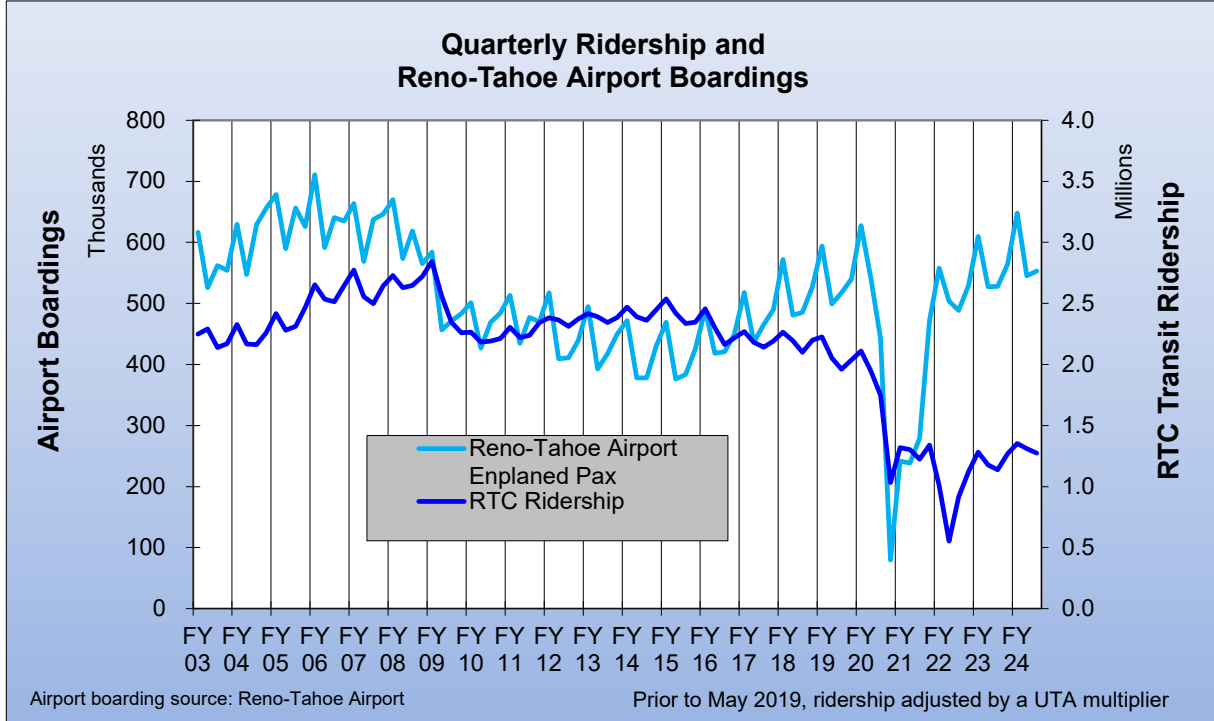
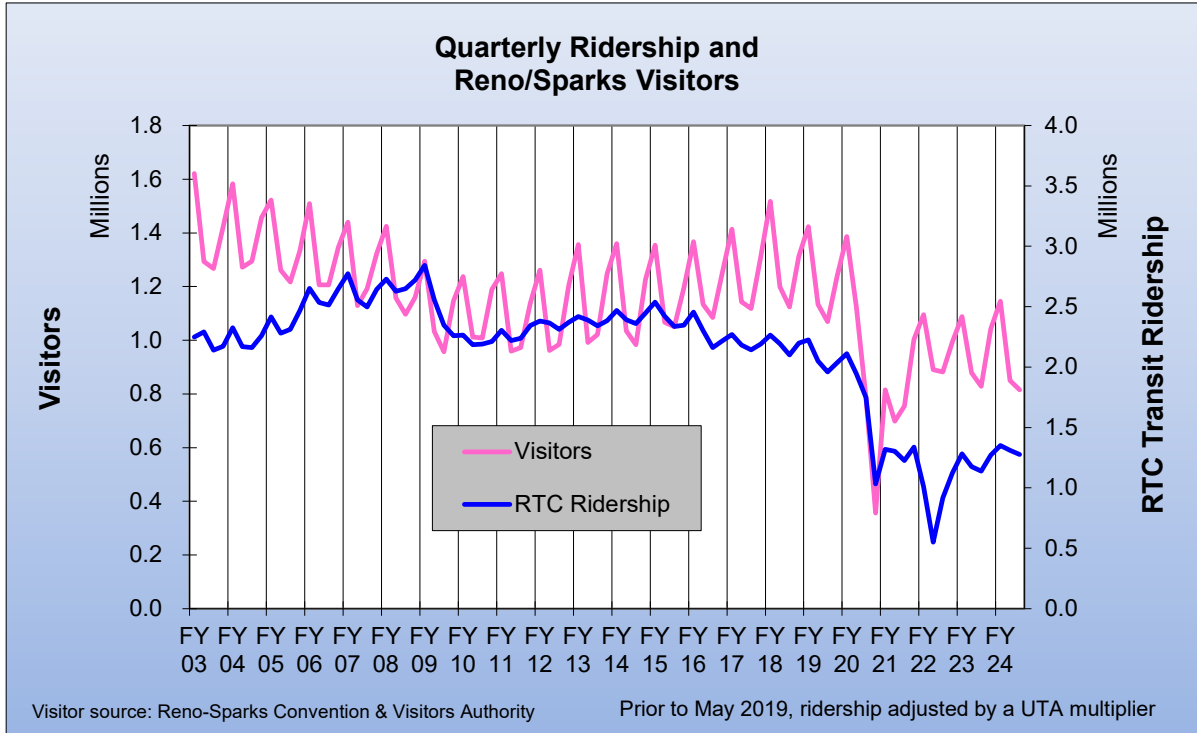
<b>RTC Transit Fixed-Route Bus</b>						
<b>Weighted Average Daily Ridership Rolling 12-Month Ridership Comparison</b>						
<b>Most Recent 12 Months</b>			<b>Percent Change</b>	<b>Previous 12 Months</b>		
<b>Month</b>	<b>Year</b>	<b>Ridership</b>		<b>Month</b>	<b>Year</b>	<b>Ridership</b>
Sep		15,675	9.7%	Sep		14,286
Oct		15,353	8.4%	Oct		14,157
Nov		14,320	9.4%	Nov		13,086
Dec		13,931	15.6%	Dec		12,049
Jan	2024	14,262	17.1%	Jan	2023	12,184
Feb		15,294	21.0%	Feb		12,638
March		14,500	11.7%	March		12,981
Apr		15,129	7.9%	Apr		14,016
May		15,373	9.7%	May		14,008
Jun		16,157	13.6%	Jun		14,227
Jul		15,924	11.7%	Jul		14,257
Aug		16,462	12.0%	Aug		14,698



## RTC Transit Fixed-Route Bus



## RTC Transit Fixed-Route Bus



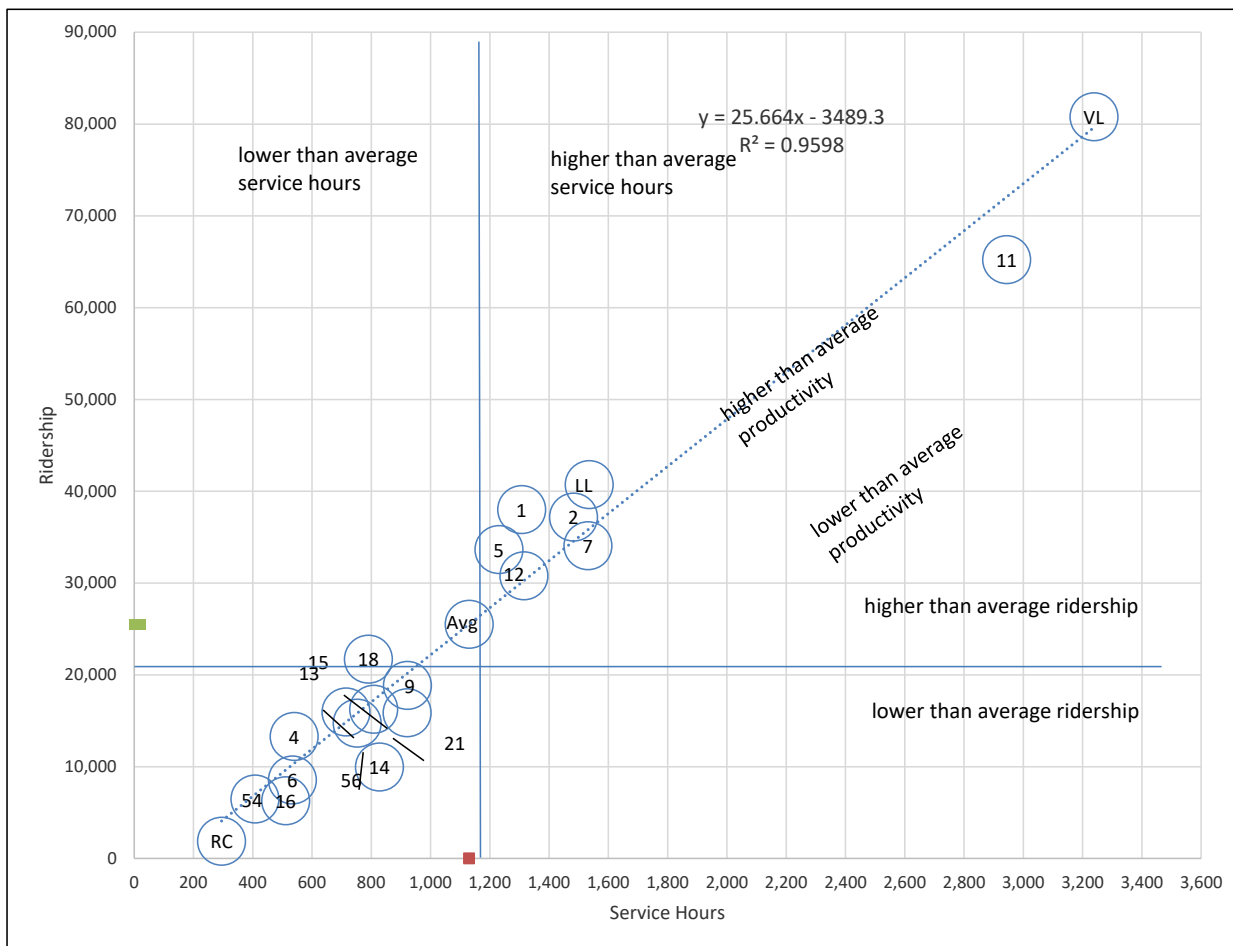
# RTC Route Comparison Report

## August 2024

Route *	Productivity	Route	Svs Hours Change Fr. Last Year	Route	Ridership	Route	Ridership Change From Last Year
1	29.1	11	53.7%	RAP VL	80,806	11	53.7%
18	27.5	12	34.6%	11	65,235	16	31.9%
5	27.3	56	23.4%	RAP LL	40,732	12	22.5%
RAP LL	26.5	TOTAL	6.2%	1	38,003	6	22.4%
2	25.1	21	5.1%	2	37,191	9	20.3%
RAP VL	25.0	13	3.3%	7	34,068	56	20.0%
4	24.6	15	0.9%	5	33,651	7	20.0%
12	23.4	16	0.7%	12	30,799	13	18.1%
TOTAL	22.6	2	0.0%	18	21,704	5	15.2%
13	22.3	6	-0.2%	9	18,860	TOTAL	10.9%
7	22.3	1	-0.3%	15	16,264	2	10.5%
11	22.2	54	-0.5%	13	15,964	15	9.1%
9	20.5	5	-0.9%	21	15,882	54	8.2%
15	20.1	RAP LL	-1.0%	56	14,746	1	5.5%
56	19.6	14	-1.2%	4	13,290	21	4.7%
21	17.3	9	-1.5%	14	9,963	14	4.0%
6	16.0	RAP VL	-1.7%	6	8,554	4	2.9%
54	15.9	18	-2.1%	54	6,487	RTC RC	-2.2%
16	12.3	RTC RC	-2.5%	16	6,284	RAP VL	-5.1%
14	12.0	4	-2.9%	RTC RC	1,882	RAP LL	-5.6%
RTC RC	6.4	7	-7.0%	TOTAL	510,365	18	-7.4%

\* - RTC RC is RTC REGIONAL CONNECTOR.

## RTC Route Comparison Chart August 2024



"higher" and "lower" refer to higher or lower than the average of all routes (not the system average)

# RTC TRANSIT OPERATING STATISTICS

**Aug 2024**

Route	Total Ridership	Previous Year	Change	Vehicle Revenue Hours	Previous Year	Change	Rides/VRH	Previous Year	Change
RAPID VL	80,806	85,161	-5.1%	3,238	3,294	-1.7%	25.0	25.9	-3.5%
RAPID LL	40,732	43,151	-5.6%	1,535	1,552	-1.0%	26.5	27.8	-4.6%
1	38,003	36,036	5.5%	1,307	1,311	-0.3%	29.1	27.5	5.7%
2	37,191	33,660	10.5%	1,482	1,483	0.0%	25.1	22.7	10.5%
4	13,290	12,919	2.9%	540	556	-2.9%	24.6	23.2	6.0%
5	33,651	29,220	15.2%	1,231	1,242	-0.9%	27.3	23.5	16.2%
6	8,554	6,986	22.4%	534	535	-0.2%	16.0	13.1	22.8%
7	34,068	28,400	20.0%	1,531	1,645	-7.0%	22.3	17.3	28.9%
9	18,860	15,681	20.3%	922	936	-1.5%	20.5	16.8	22.0%
11	65,235	42,437	53.7%	2,944	1,915	53.7%	22.2	22.2	0.0%
12	30,799	25,148	22.5%	1,315	977	34.6%	23.4	25.7	-9.0%
13	15,964	13,520	18.1%	715	692	3.3%	22.3	19.5	14.3%
14	9,963	9,584	4.0%	827	838	-1.2%	12.0	11.4	5.3%
15	16,264	14,908	9.1%	808	801	0.9%	20.1	18.6	8.1%
16	6,284	4,766	31.9%	511	508	0.7%	12.3	9.4	30.9%
18	21,704	23,434	-7.4%	790	808	-2.1%	27.5	29.0	-5.4%
21	15,882	15,165	4.7%	921	876	5.1%	17.3	17.3	-0.4%
54	6,487	5,995	8.2%	407	409	-0.5%	15.9	14.6	8.7%
56	14,746	12,289	20.0%	752	609	23.4%	19.6	20.2	-2.8%
RC Carson	1,882	1,924	-2.2%	295	303	-2.5%	6.4	6.4	0.4%
Misc. Service		0	N/A	0	0	N/A		0.0	N/A
<b>Aug 2024</b>	<b>510,365</b>	<b>460,384</b>	<b>10.9%</b>	<b>22,606</b>	<b>21,286</b>	<b>6.2%</b>	<b>22.6</b>	<b>21.6</b>	<b>4.4%</b>
Aug '23	460,384			21,286			21.6		
Perc. Change	10.9%			6.2%			4.4%		



# RTC TRANSIT OPERATING STATISTICS

**Aug 2024**

Route	Vehicle Revenue Miles	Rides/VRM	Est. Gross Operating Cost	Est. Cost Per VRH	Est. Cost Per VRM	Est. Cost Per Ride
RAPID VL	33,562	2.41	\$533,844	\$165	\$15.91	\$6.61
RAPID LL	14,767	2.76	\$253,110	\$165	\$17.14	\$6.21
1	12,929	2.94	\$215,500	\$165	\$16.67	\$5.67
2	15,509	2.40	\$244,366	\$165	\$15.76	\$6.57
4	6,993	1.90	\$88,978	\$165	\$12.72	\$6.70
5	16,400	2.05	\$202,856	\$165	\$12.37	\$6.03
6	4,943	1.73	\$87,967	\$165	\$17.80	\$10.28
7	27,041	1.26	\$252,316	\$165	\$9.33	\$7.41
9	10,356	1.82	\$152,008	\$165	\$14.68	\$8.06
11	31,350	2.08	\$485,274	\$165	\$15.48	\$7.44
12	13,384	2.30	\$216,805	\$165	\$16.20	\$7.04
13	6,584	2.42	\$117,819	\$165	\$17.90	\$7.38
14	7,977	1.25	\$136,393	\$165	\$17.10	\$13.69
15	8,312	1.96	\$133,201	\$165	\$16.02	\$8.19
16	3,561	1.76	\$84,280	\$165	\$23.67	\$13.41
18	8,589	2.53	\$130,300	\$165	\$15.17	\$6.00
21	10,034	1.58	\$151,758	\$165	\$15.12	\$9.56
54	6,539	0.99	\$67,151	\$165	\$10.27	\$10.35
56	11,084	1.33	\$124,006	\$165	\$11.19	\$8.41
RC Carson	8,859	0.21	\$48,598	\$165	\$5.49	\$25.82
Misc. Service	0					
<b>Aug 2024</b>	<b>258,774</b>	<b>1.97</b>	<b>\$3,726,530</b>	<b>\$165</b>	<b>\$14.40</b>	<b>\$7.30</b>
Aug '23	249,906	1.84	\$3,360,274	\$158	\$13.45	\$7.30
Perc. Change	3.5%	7.1%	10.9%	4.4%	7.1%	0.0%

RTC Transit Operating Statistics

Sep'23 - Aug '24

Route	Total Ridership	Previous Year	Change	Vehicle Revenue Hours	Previous Year	Change	Rides/VRH	Previous Year	Change
RAPID VL	966,912	861,175	12%	37,111	38,390	-3%	26.1	22.4	16%
RAPID LL	446,205	423,356	5%	17,744	18,059	-2%	25.1	23.4	7%
1	420,517	441,990	-5%	15,361	17,234	-11%	27.4	25.6	7%
2	379,315	352,827	8%	17,138	17,446	-2%	22.1	20.2	9%
4	149,573	131,259	14%	6,347	6,429	-1%	23.6	20.4	15%
5	345,370	321,395	7%	14,235	14,263	0%	24.3	22.5	8%
6	88,202	70,781	25%	6,254	5,866	7%	14.1	12.1	17%
7	348,860	316,488	10%	17,601	19,046	-8%	19.8	16.6	19%
9	189,420	150,586	26%	10,688	12,052	-11%	17.7	12.5	42%
11	611,754	393,649	55%	34,845	16,266	114%	17.6	24.2	-27%
12	309,087	274,528	13%	15,220	14,433	5%	20.3	19.0	7%
13	164,098	133,149	23%	8,280	8,069	3%	19.8	16.5	20%
14	109,457	90,495	21%	9,615	8,575	12%	11.4	10.6	8%
15	174,130	142,457	22%	9,376	9,303	1%	18.6	15.3	21%
16	61,054	49,003	25%	5,988	4,986	20%	10.2	9.8	4%
18	240,436	252,584	-5%	9,120	9,777	-7%	26.4	25.8	2%
21	164,872	140,305	18%	10,277	8,286	24%	16.0	16.9	-5%
54	69,104	65,296	6%	4,774	5,537	-14%	14.5	11.8	23%
56	153,248	118,478	29%	8,654	7,311	18%	17.7	16.2	9%
RC Carson	20,076	18,968	6%	3,332	3,354	-1%	6.0	5.7	7%
Misc. Service									
<b>Current 12 Months</b>	<b>5,411,690</b>	<b>4,900,419</b>	<b>10.4%</b>	<b>261,961</b>	<b>254,636</b>	<b>2.9%</b>	<b>20.7</b>	<b>19.2</b>	<b>7.3%</b>
Previous 12 Months	4,900,419			254,636			19.2		
Perc. Change	10.4%			2.9%			7.3%		

RTC Transit Operating Statistics

Sep'23 - Aug '24

Route	Vehicle Revenue Miles (thousand)	Rides/VRM	Est. Gross Operating Cost (thousand)	Est. Cost Per VRH	Est. Cost Per VRM	Est. Cost Per Ride
RAPID VL	358.5	2.70	\$5,904	\$159	\$16.47	\$6.11
RAPID LL	171.1	2.61	\$2,823	\$159	\$16.49	\$6.33
1	151.9	2.77	\$2,443	\$159	\$16.09	\$5.81
2	179.7	2.11	\$2,726	\$159	\$15.17	\$7.19
4	82.2	1.82	\$1,010	\$159	\$12.28	\$6.75
5	193.5	1.78	\$2,264	\$159	\$11.70	\$6.56
6	58.0	1.52	\$995	\$159	\$17.17	\$11.28
7	311.2	1.12	\$2,800	\$159	\$9.00	\$8.03
9	120.4	1.57	\$1,700	\$159	\$14.12	\$8.98
11	360.5	1.70	\$5,542	\$159	\$15.37	\$9.06
12	154.8	2.00	\$2,421	\$159	\$15.64	\$7.83
13	75.6	2.17	\$1,317	\$159	\$17.43	\$8.03
14	92.7	1.18	\$1,529	\$159	\$16.51	\$13.97
15	96.6	1.80	\$1,491	\$159	\$15.44	\$8.57
16	41.4	1.48	\$952	\$159	\$23.03	\$15.60
18	99.1	2.43	\$1,451	\$159	\$14.64	\$6.03
21	112.6	1.46	\$1,635	\$159	\$14.52	\$9.92
54	76.6	0.90	\$759	\$159	\$9.91	\$10.99
56	127.5	1.20	\$1,377	\$159	\$10.79	\$8.98
RC Carson	100.3	0.20	\$530	\$159	\$5.29	\$26.40
Misc. Service						
<b>Current 12 Months</b>	<b>2,964.2</b>	<b>1.83</b>	<b>\$41,669</b>	<b>\$159</b>	<b>\$14.06</b>	<b>\$7.70</b>
Previous 12 Months	2,796.2	1.75	\$37,999	\$149	\$13.59	\$7.75
Perc. Change	6.0%	4.2%	9.7%	6.6%	3.4%	-0.7%

**August**

**Sep 2023 - Aug 2024**

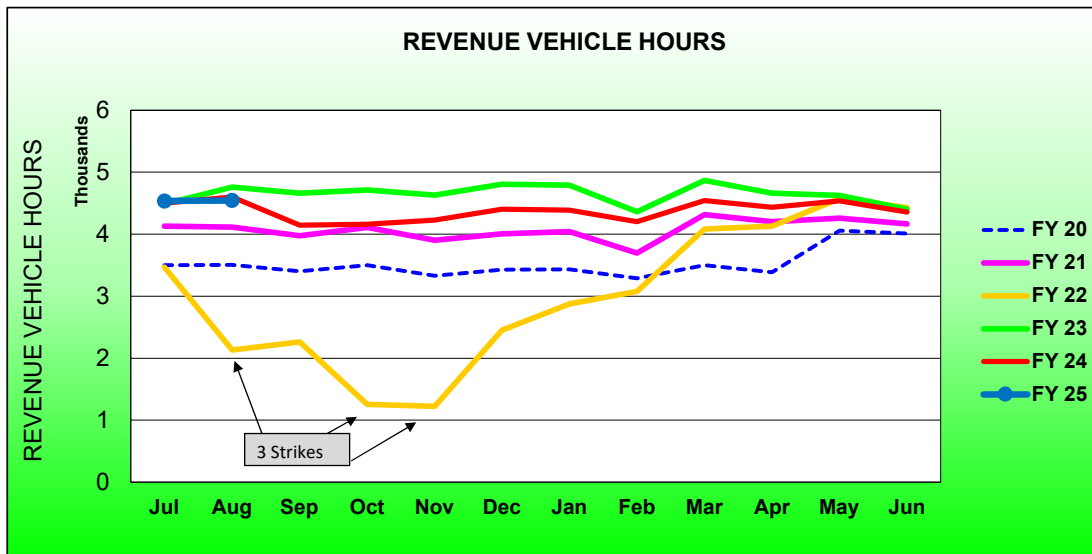
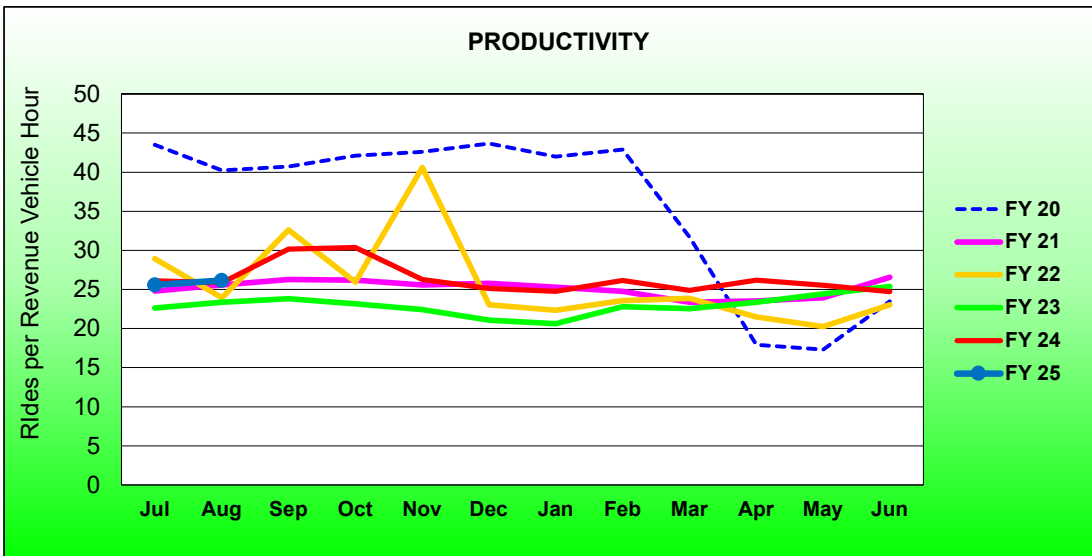
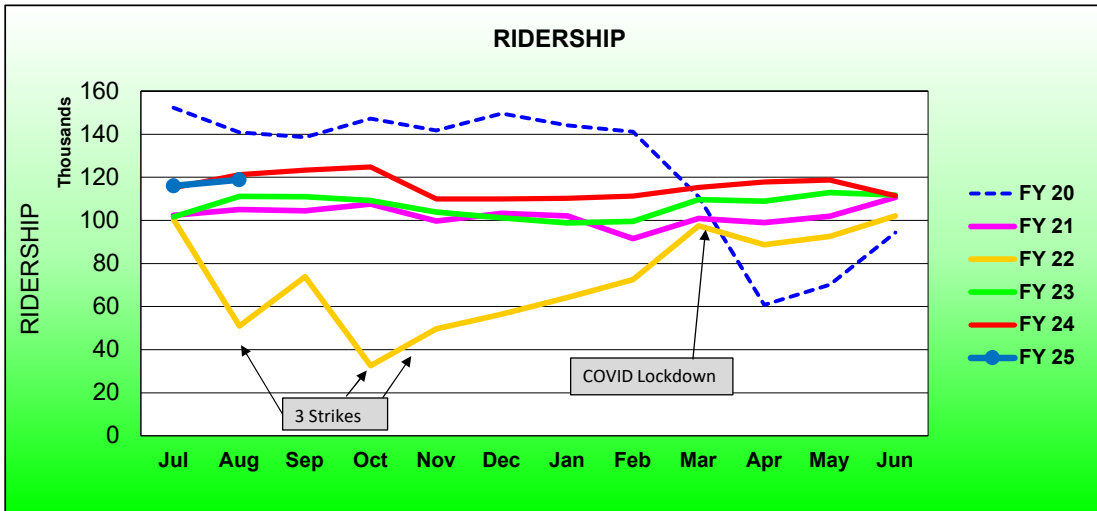
	2024	2023	Percent Change	Current 12 Months	Previous 12 Month	Percent Change
<b>Single Ride Cash</b>						
Full Fare	4,454	5,461	-18%	46,926	64,112	-27%
Reduced*	5,888	7,599	-23%	68,125	96,000	-29%
RTC ACCESS ID	288	342	-16%	3,970	4,194	-5%
<b>Total</b>	<b>10,630</b>	<b>13,402</b>	<b>-21%</b>	<b>119,021</b>	<b>164,306</b>	<b>-28%</b>
<b>Day Pass Cash</b>						
Full Fare	55,241	58,375	-5%	613,627	736,640	-17%
Reduced*	67,250	68,441	-1.7%	751,607	853,711	-12.0%
<b>Total</b>	<b>122,491</b>	<b>126,816</b>	<b>-3.4%</b>	<b>1,365,234</b>	<b>1,590,351</b>	<b>-14%</b>
<b>Pre-Purchase Period Pass</b>						
Full Fare	123,661	114,842	8%	1,242,409	1,183,743	5%
Reduced*	160,188	135,852	18%	1,586,317	1,402,457	13%
<b>Total</b>	<b>283,849</b>	<b>250,694</b>	<b>13%</b>	<b>2,828,726</b>	<b>2,586,200</b>	<b>9%</b>
Transfers	268	90	198%	2,570	2,809	-9%
Flow Through	5,739	6,147	-7%	52,486	63,093	-17%
Free Rides	61,066	44,273	38%	284,881	298,902	-5%
U/Ed-Pass Free Rides	22,549	15,869	42%	202,412	157,620	28%
Stored Ride Pass	3,773	3,093	22.0%	35,277	37,138	-5%
Full Fare	214,426	203,021	5.6%	2,066,895	2,165,512	-4.6%
Reduced*	295,784	257,238	15%	2,832,673	2,733,536	4%
<b>Total Ridership</b>	<b>510,365</b>	<b>460,384</b>	<b>10.9%</b>	<b>5,411,690</b>	<b>4,900,419</b>	<b>10.4%</b>
Previous 12 Months	460,384	445,976		4,900,419		
Change	10.9%	3.2%		10.4%		
<b>Vehicle Revenue Hours</b>	<b>22,606</b>	<b>21,286</b>	<b>6.2%</b>	<b>261,961</b>	<b>254,636</b>	<b>2.9%</b>
Previous 12 Months	21,286	21,978		254,636		
Change	6.2%	-3.2%		2.9%		
<b>Rides / VRH</b>	<b>22.6</b>	<b>21.6</b>	<b>4.4%</b>	<b>20.7</b>	<b>19.2</b>	<b>7.3%</b>
Previous 12 Months	21.6	20.3		19.2		
Change	4.4%	6.6%		7.3%		
<b>Vehicle Revenue Miles</b>	<b>258,774</b>	<b>249,906</b>	<b>3.5%</b>	<b>2,964,245</b>	<b>2,796,155</b>	<b>6.0%</b>
<b>Rides / VRM</b>	<b>1.97</b>	<b>1.84</b>	<b>7.1%</b>	<b>1.83</b>	<b>1.75</b>	<b>4.2%</b>
Est. Gross Operating Cost	\$3,726,530	\$3,360,274	10.9%	\$41,669,302	\$37,999,158	9.7%
Est. Cost Per VRH	\$165	\$158	4.4%	\$159.07	\$149.23	6.9%
Est. Cost Per VRM	\$14.40	\$13.45	7.1%	\$14.06	\$13.59	3.4%
Est. Cost Per Ride	\$7.30	\$7.30	0.0%	\$7.70	\$7.75	-0.7%

\* - Reduced fare includes Youth, Senior, Disabled, and US Veterans

<b>RTC RAPID Virginia Line and Route 1</b>						
<b>ROLLING 12-MONTH COMPARISON</b>						
<b>Most Recent 12 Months</b>			<b>Percent Change</b>	<b>Previous 12 Months</b>		
<b>Month</b>	<b>Year</b>	<b>Ridership</b>		<b>Month</b>	<b>Year</b>	<b>Ridership</b>
Sep		123,298	11.1%	Sep		111,004
Oct		124,715	14.2%	Oct		109,180
Nov		109,893	5.8%	Nov		103,868
Dec		109,966	8.6%	Dec		101,252
Jan	2024	110,229	11.6%	Jan	2023	98,740
Feb		111,239	11.8%	Feb		99,491
March		115,379	5.2%	March		109,639
Apr		117,811	8.1%	Apr		108,968
May		118,653	5.1%	May		112,931
Jun		111,479	-0.2%	Jun		111,746
Jul		115,958	0.7%	Jul		115,149
Aug		118,809	-2.0%	Aug		121,197
<b>TOTAL</b>		<b>1,387,429</b>	<b>6.5%</b>	<b>TOTAL</b>		<b>1,303,165</b>

\* - Strikes occurred Aug 3-13, Sep 27-Oct 20, Nov 9-Dec 3, 2021

### RTC RAPID Virginia Line and Route 1 Fiscal Year Comparisons



<b>RTC RAPID Lincoln Line and Route 11</b>						
<b>Rolling 12-Month Comparison</b>						
<b>Most Recent 12 Months</b>			<b>Percent Change</b>	<b>Previous 12 Months</b>		
<b>Month</b>	<b>Year</b>	<b>Ridership</b>		<b>Month</b>	<b>Year</b>	<b>Ridership</b>
Sep		86,016	24%	Sep		69,592
Oct		86,638	30%	Oct		66,800
Nov		76,791	32%	Nov		58,346
Dec		77,855	30%	Dec		59,985
Jan	2024	82,348	37%	Jan	2023	60,272
Feb		81,020	43%	Feb		56,669
Mar		86,512	34%	Mar		64,370
Apr		90,650	43%	Apr		63,439
May		94,524	27%	May		74,197
Jun		91,699	20%	Jun		76,479
Jul		97,939	21%	Jul		81,268
Aug		105,967	24%	Aug		85,588
<b>TOTAL</b>		<b>1,057,959</b>	<b>29%</b>	<b>TOTAL</b>		<b>817,005</b>



RTC Transit Operating Statistics

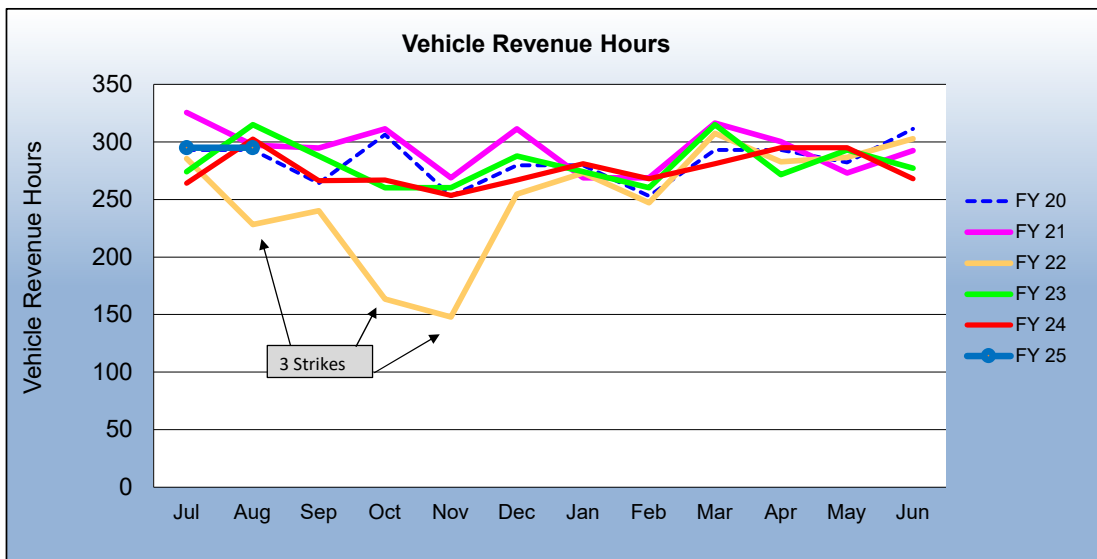
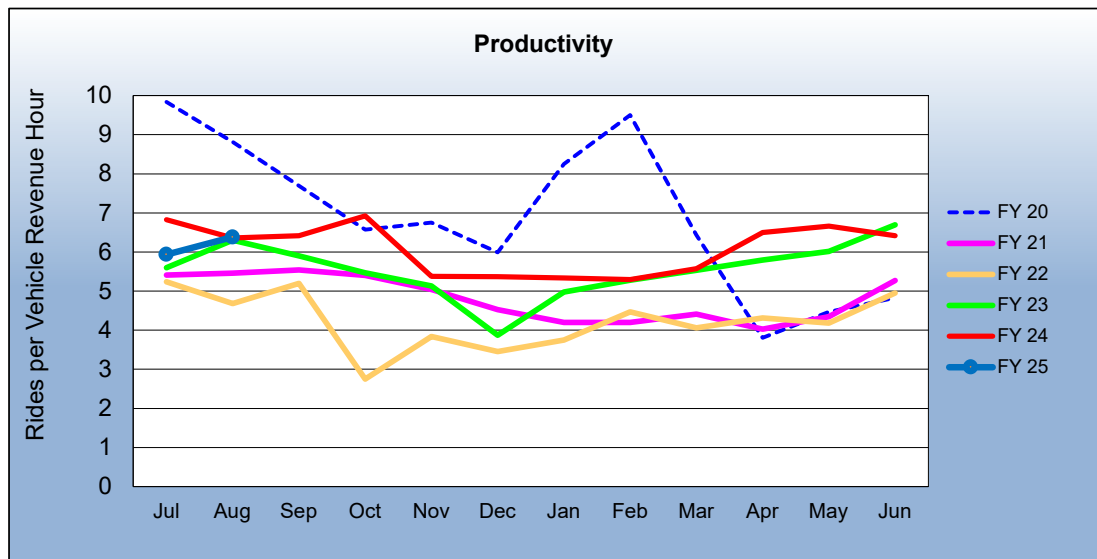
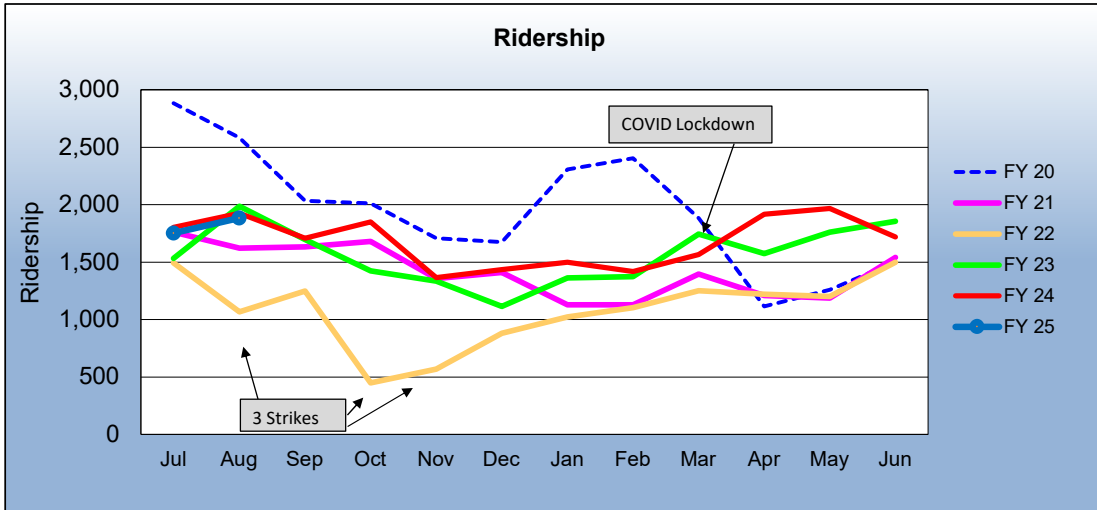
<b>RTC RAPID Virginia &amp; Lincoln Lines</b>						
<b>ROLLING 12-MONTH COMPARISON</b>						
<b>Most Recent 12 Months</b>			<b>Percent Change</b>	<b>Previous 12 Months</b>		
<b>Month</b>	<b>Year</b>	<b>Ridership</b>		<b>Month</b>	<b>Year</b>	<b>Ridership</b>
Sep		127,255	20%	Sep		105,807
Oct		127,380	25%	Oct		101,939
Nov		111,741	14%	Nov		98,227
Dec		112,141	18%	Dec		94,884
Jan	2024	111,384	17%	Jan	2023	94,823
Feb		111,895	17%	Feb		95,606
Mar		116,399	10%	Mar		105,699
Apr		120,299	14%	Apr		105,548
May		122,131	5.1%	May		116,256
Jun		113,689	-2.7%	Jun		116,866
Jul		117,265	-2.7%	Jul		120,564
Aug		121,538	-5.3%	Aug		128,312
<b>TOTAL</b>		<b>1,413,117</b>	<b>10%</b>	<b>TOTAL</b>		<b>1,284,531</b>

\* - Strikes occurred Aug 3-13, Sep 27-Oct 20, Nov 9-Dec 3, 2021

<b>RTC REGIONAL CONNECTOR - Carson Line</b>						
<b>Rolling 12 Month Comparison</b>						
<b>Most Recent 12 Months</b>			<b>Percent Change</b>	<b>Previous 12 Months</b>		
<b>Month</b>	<b>Year</b>	<b>Ridership</b>		<b>Month</b>	<b>Year</b>	<b>Ridership</b>
Sep		1,708	0.6%	Sep		1,697
Oct		1,849	30%	Oct		1,424
Nov		1,365	2.2%	Nov		1,335
Dec		1,434	28.8%	Dec		1,113
Jan	2024	1,500	10.0%	Jan	2023	1,364
Feb		1,419	3.3%	Feb		1,374
Mar		1,567	-10.1%	Mar		1,743
Apr		1,916	21.7%	Apr		1,575
May		1,965	11.5%	May		1,762
Jun		1,720	-7.3%	Jun		1,855
Jul		1,751	-2.8%	Jul		1,802
Aug		1,882	-2.2%	Aug		1,924
<b>TOTAL</b>		<b>20,076</b>	<b>5.8%</b>	<b>TOTAL</b>		<b>18,968</b>

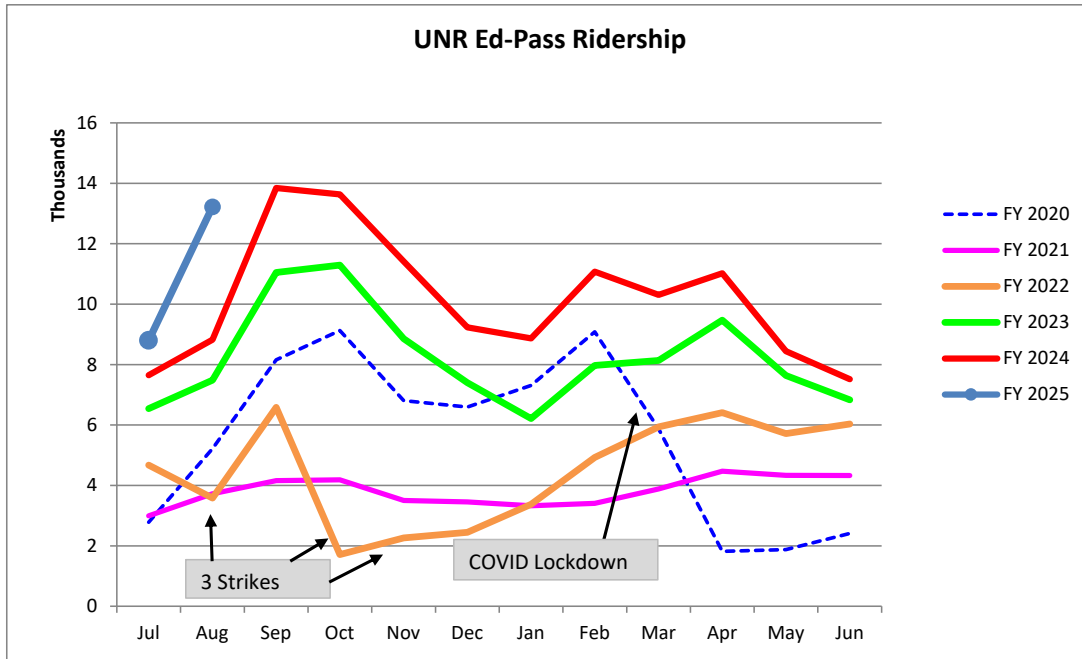
\* - Strikes occurred Aug 3-13, Sep 27-Oct 20, Nov 9-Dec 3, 2021

### RTC REGIONAL CONNECTOR Carson Line Fiscal Year Comparisons



**RTC Transit Fixed Route Bus Ridership Report  
University of Nevada, Reno Ed-Pass Program  
FY 2024**

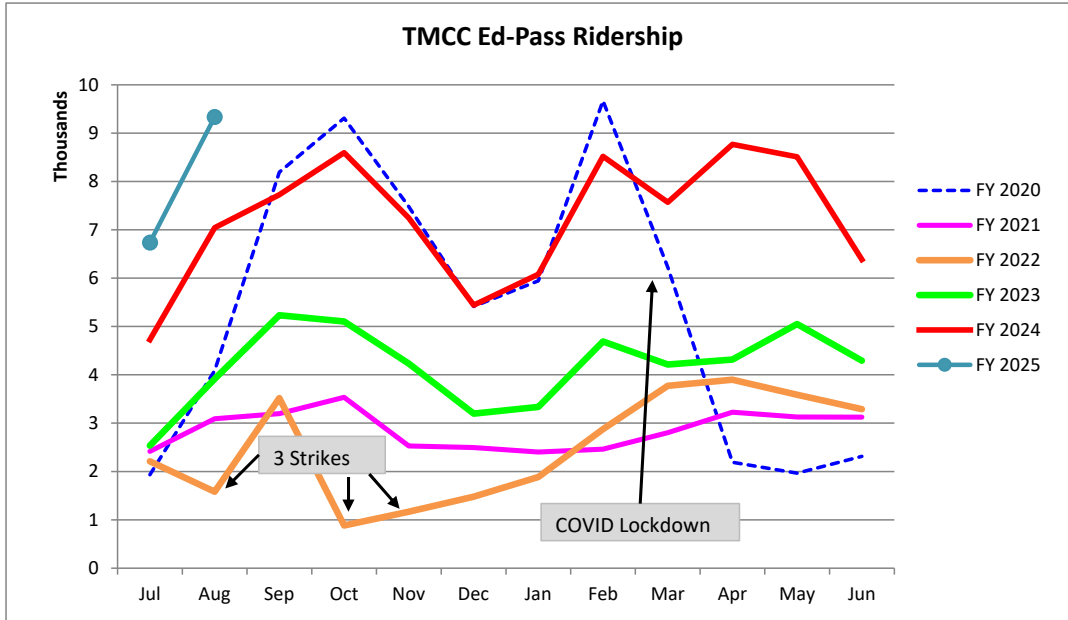
Category	Jul	Aug	Sep	Oct	Nov	Dec	Jan	Feb	Mar	Apr	May	Jun	FYTD
FY 2020	2,779	5,218	8,159	9,127	6,808	6,592	7,312	9,084	5,873	1,818	1,877	2,410	67,057
FY 2021	2,991	3,723	4,156	4,185	3,502	3,455	3,329	3,409	3,881	4,471	4,333	4,330	45,765
FY 2022	4,670	3,581	6,584	1,710	2,264	2,447	3,376	4,924	5,936	6,410	5,716	6,033	53,651
FY 2023	6,539	7,482	11,046	11,291	8,857	7,399	6,215	7,973	8,138	9,470	7,640	6,833	98,883
FY 2024	7,650	8,824	13,841	13,631	11,414	9,231	8,864	11,077	10,309	11,024	8,445	7,516	121,826
Percent Change	15%	50%											
FY 2025	8,797	13,215											



Fiscal Year	Rides
FY 2003	51,228
FY 2004	55,114
FY 2005	69,685
FY 2006	88,070
FY 2007	85,295
FY 2008	86,461
FY 2009	88,385
FY 2010	79,518
FY 2011	75,925
FY 2012	75,300
FY 2013	50,438
FY 2014	40,854
FY 2015	41,778
FY 2016	50,022
FY 2017	40,581
FY 2018	34,154
FY 2019	30,251
<b>U-Pass:</b>	
FY 2020	67,057
FY 2021	45,765
FY 2022	53,651
FY 2023	98,883
FY 2024	121,826

**RTC Transit Fixed Route Bus Ridership Report  
Truckee Meadows Community Ed-Pass Program  
FY 2024**

Category	Jul	Aug	Sep	Oct	Nov	Dec	Jan	Feb	Mar	Apr	May	Jun	FYTD
FY 2020	1,933	4,086	8,193	9,311	7,479	5,413	5,945	9,668	6,227	2,193	1,968	2,310	64,726
FY 2021	2,414	3,090	3,194	3,535	2,527	2,493	2,402	2,459	2,800	3,225	3,126	3,124	34,389
FY 2022	2,208	1,584	3,516	883	1,170	1,480	1,886	2,875	3,773	3,899	3,585	3,287	30,146
FY 2023	2,533	3,913	5,233	5,103	4,231	3,195	3,335	4,690	4,213	4,314	5,051	4,292	50,103
FY 2024	4,725	7,045	7,727	8,596	7,244	5,440	6,081	8,520	7,569	8,768	8,510	6,384	86,609
Percent Change	43%	32%											
FY 2025	6,734	9,334											



Fiscal Year	Rides
FY 2013	90,583
FY 2014	113,700
FY 2015	94,112
FY 2016	83,375
FY 2017	66,110
FY 2018	53,027
FY 2019	37,191

Ed-Pass:	Rides
FY 2020	64,726
FY 2021	34,389
FY 2022	30,146
FY 2023	50,103
FY 2024	86,609