



REGIONAL TRANSPORTATION COMMISSION
Public Transportation • Streets and Highways • Planning



RTC Transit Fixed Route Bus Operating Statistics

**RTC RIDE
RTC RAPID
RTC REGIONAL CONNECTOR**

September 2024

RTC Transit Fixed Route Bus Operating Statistics Report

TABLE OF CONTENTS

RTC Transit Fixed Route Bus Highlights..... Page ii

RTC Transit Fixed Route Bus Summary Page iv

System Reports..... Page 1

Economic Data Page 5

Route Comparison Data..... Page 7

Monthly Operating Statistics..... Page 9

RTC RAPID Virginia Line & Route 1 Page 14

RTC RAPID Lincoln Line & Route 11 Page 16

RTC REGIONAL CONNECTOR Carson Line Page 18

RTC TMCC and UNR Education Pass..... Page 20

RTC Transit Fixed Route Bus Highlights

September 2024

RTC Transit Fixed Route Bus

- For the month of September, there were 493,117 rides, **up 6.8%** compared with last year (page 1). Weighted average daily ridership was 17,068, **up 8.9%** compared with last year (page 3).
- For the most recent 12 months, there were 5.44 million rides **up 10.3%** compared with the previous 12 months.
- In September, there were 21,497 service hours, **up 4.1%** compared with last year (page 9).
- Productivity was 22.9 rides per service hour, **up 2.6%** compared with last year (page 9).

External Impacts on Ridership

- The average temperature this month was 68.2° F, 2.0° F higher compared with last year.
- The Reno-Sparks area preliminary unemployment rate in August was 4.7%. Unemployment has been gradually trending upward since a low of 2.8% in December 2021.
- Nevada's preliminary unemployment rate for August was 5.5%. The national unemployment rate for August was 4.2%.

Historical Impacts Causing a Downward Trend in Bus Ridership

- According to Bureau of Labor Statistics, 27% of US employees worked remotely at least part of the time in 2023, with several academic surveys suggesting it is closer to 50%*.
- In April 2022, the City of Reno entered an agreement with Bird electric scooters to serve Reno.
- In 2021, Keolis transit workers went on strike August 3 to 13, September 27 to October 20, and November 9 to December 3. Limited service was provided on Routes 1, 7, and 11 and RTC REGIONAL CONNECTOR to Carson City. RTC provided free rides on RIDE, FlexRIDE, taxis, and UberX during the second and third strikes.
- A combination of the pandemic, stimulus checks, easy car financing, and gig jobs requiring cars has likely resulted in a large number of people abandoning transit for car ownership.
- In response to the COVID-19 pandemic, Governor Sisolak ordered the shutdown of casinos and other nonessential businesses in March 2020. In May 2020, Governor Sisolak reopened a number of businesses including bars, salons, gyms, and retail. Casinos were allowed to reopen in June 2020. In May 2021, maximum business capacity increased to 100% in Washoe County.
- There has been an increase in people working primarily from home, approximately eight million in 2018 according to US Census Bureau estimates, taking over transit as the second most common means of getting to work.
- While employment has increased in the region, the makeup of local employment has significantly changed. When Reno was a tourism and gaming town, a large portion of employment was in the low-wage, service industry whereas recently jobs tend to be higher wage and geographically dispersed requiring cars.
- Uber started permanent service in Reno in 2015 and Lyft started shortly after.
- As of 2014, Nevada provides driver's licenses for people who are undocumented immigrants.
- As downtown and midtown areas in-fill and gentrify, this also pushes lower income people to the suburbs where they are much more likely to need cars. This is a nationwide trend.
- The drop in ridership (before COVID) has been a nationwide trend as illustrated by the chart on page 4 which compares RTC transit ridership with US and Canadian bus ridership.
- With the growth of online shopping and food delivery, it is also likely that bus trips used for shopping and dining out has fallen substantially, especially for those with mobility challenges who would prefer online shopping and food delivery. Also, people without cars may decide to purchase a car with the intention of using the car to deliver food and finance the car.

* - <https://www.forbes.com/sites/forbesfinancecouncil/2023/11/06/changing-environment-altering-employer-obligations-for-remote-workers/?sh=7c9e531e2145>



RTC Transit Fixed Route Bus Summary

Route Ridership

- For September, Route 5 (serving Sutro – Sun Valley) had the highest productivity with 28.4 rides per service hour.
- Route 18 (serving Glendale) came in second with 27.8.
- Route 1 (serving S Virginia St between downtown Reno and Meadowood Mall) had the third highest productivity in the system with 27.7 rides per service hour (page 7).
- Route 16 (serving Idlewild) had the highest increase in ridership at 38.7%.
- Route 11 ridership had the second highest increase compared with last year by 35.5%. In May 2023, Routes 3 and 26 were eliminated with Route 11 absorbing parts of Routes 3 and 26.
- Route 12 (serving Terminal - Neil) had the third highest increase in ridership at 19.1%.

RTC RAPID (Virginia & Lincoln Lines Combined)

- This month, there were 122,911 rides on RTC RAPID **down 3.4%** compared with last year. By comparison, system ridership was up 6.8%. The productivity of RTC RAPID at 26.9 rides per service hour was **down 9.2%** compared with last year. By comparison, system productivity was 22.9 rides per service hour, **up 2.6%** compared with last year.
- There were 1.408 million rides over the most recent 12 months, **up 7.9%** compared with the previous 12 months.
- RAPID rides now make up 24.9% of system ridership.
- 44.7% of all system rides were taken on RAPID and Routes 1 and 11.

RTC RAPID Virginia Line

- This month, there were 84,340 rides on the Virginia Line **down 3.3%** compared with last year. Productivity at 27.3 rides per service hour is **down 9.6%** compared with last year.
- Ridership for both the Virginia Line and Route 1 was 119,329 **down 3.2%** compared with last year (page 14). There were 1.38 million rides over the most recent 12 months, **up 5.2%** compared with the previous 12 months.

RTC RAPID Lincoln Line

- This month, there were 38,571 rides on the Lincoln Line **down 3.7%** compared with last year. Productivity at 26.2 rides per service hour is **down 8.4%** compared with last year.
- Ridership for both the Lincoln Line and Route 11 was 100,874 **up 17%** compared with last year (page 16). There were 1.07 million rides for the most recent 12 months, **up 29%** compared with the previous 12 months.

RTC REGIONAL CONNECTOR Carson Line

- There were 1,806 rides this month, **up 5.7%** compared with last September (page 18). At 6.7 rides per service hour, productivity is the same as last year. There were 20,174 rides for the most recent 12 months, **up 6.3 %** compared with the previous 12 months.

RTC TMCC and UNR Education Pass

- There were 14,988 UNR Ed-Pass rides, **up 8.3%** compared with last year (page 20).
- There were 12,476 TMCC Ed-Pass rides, **up 61%** compared with last year.

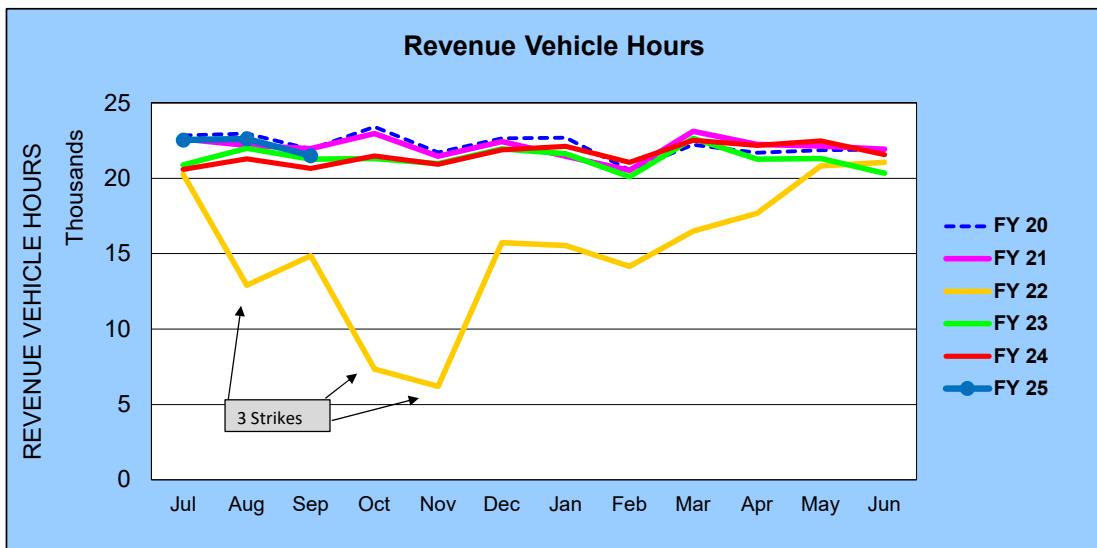
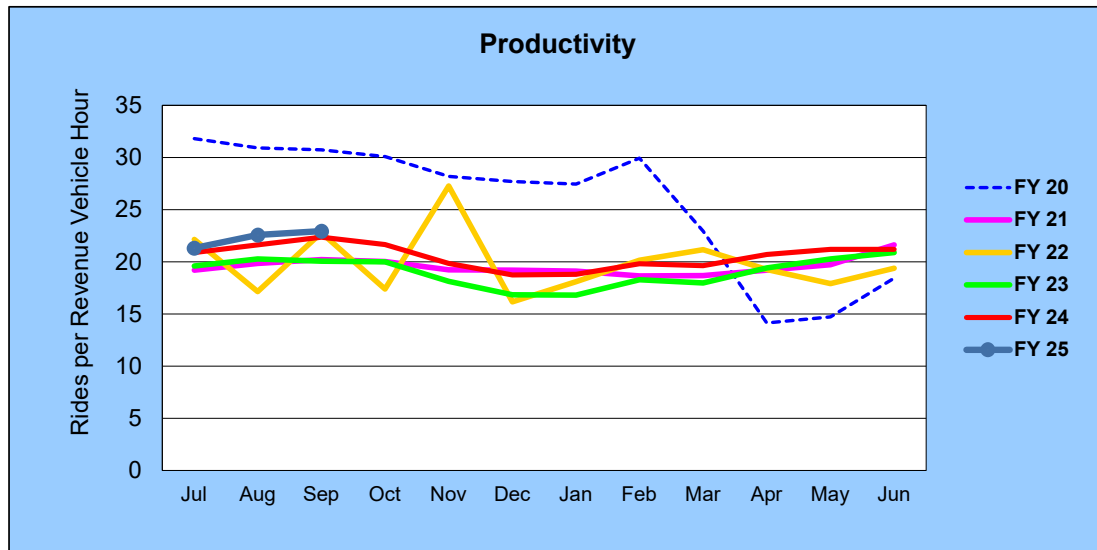
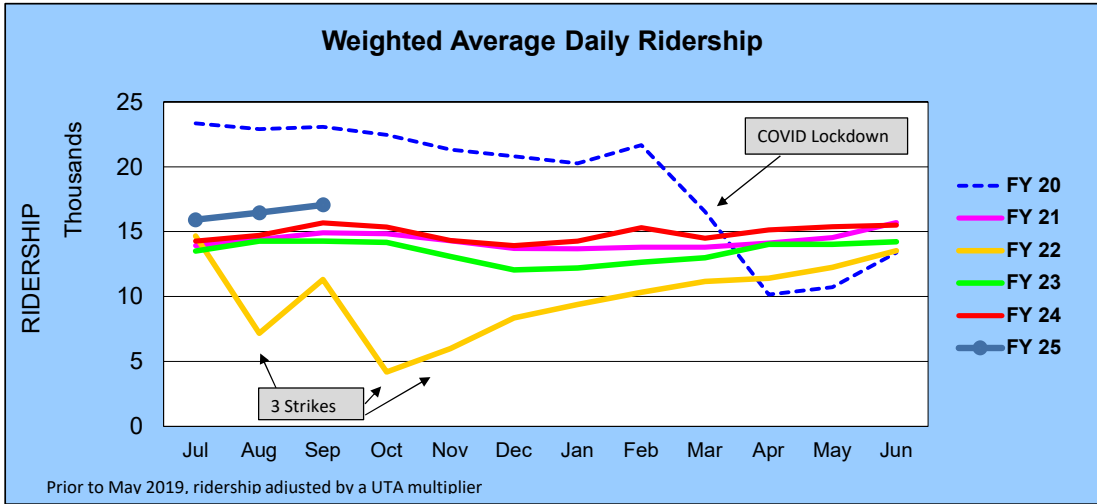
RTC Transit Operating Statistics

| RTC Transit Fixed Route Bus | | | | | | |
|--|-------------|------------------|-----------------------|---------------------------|-------------|------------------|
| Rolling 12-Month Ridership Comparison | | | | | | |
| Most Recent 12 Months | | | Percent Change | Previous 12 Months | | |
| Month | Year | Ridership | | Month | Year | Ridership |
| Oct | | 465,243 | 9.2% | Oct | | 426,167 |
| Nov | | 415,646 | 9.4% | Nov | | 380,081 |
| Dec | | 410,240 | 11.0% | Dec | | 369,598 |
| Jan | 2024 | 416,157 | 14.6% | Jan | 2023 | 363,174 |
| Feb | | 417,018 | 13.5% | Feb | | 367,575 |
| Mar | | 442,102 | 8.6% | Mar | | 407,074 |
| Apr | | 459,351 | 11.3% | Apr | | 412,674 |
| May | | 476,695 | 10.3% | May | | 432,170 |
| Jun | | 456,808 | 7.5% | Jun | | 425,106 |
| Jul | | 480,395 | 11.8% | Jul | | 429,718 |
| Aug | | 510,365 | 10.9% | Aug | | 460,384 |
| Sep | | 493,117 | 6.8% | Sep | | 461,670 |
| TOTAL | | 5,443,137 | 10.3% | TOTAL | | 4,935,391 |

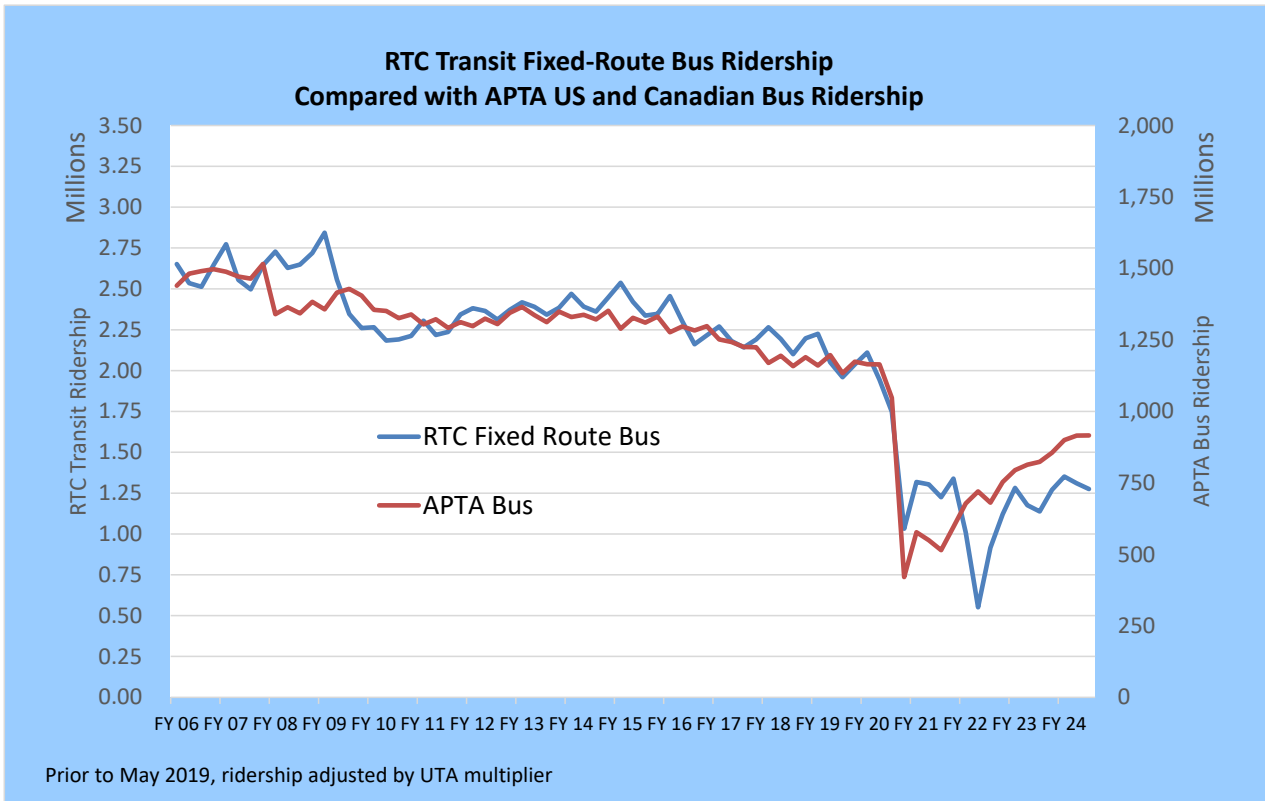
RTC Transit includes RTC RIDE, RTC RAPID, & RTC REGIONAL CONNECTOR

RTC Transit Fixed Route Bus

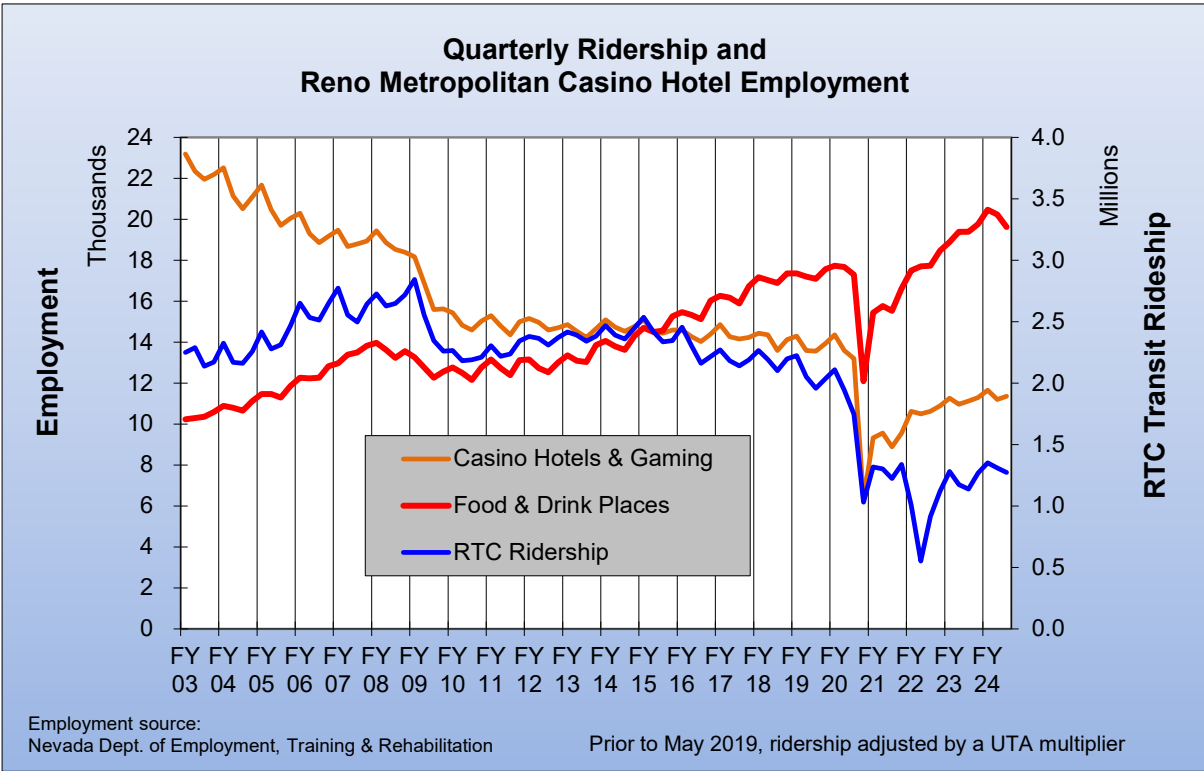
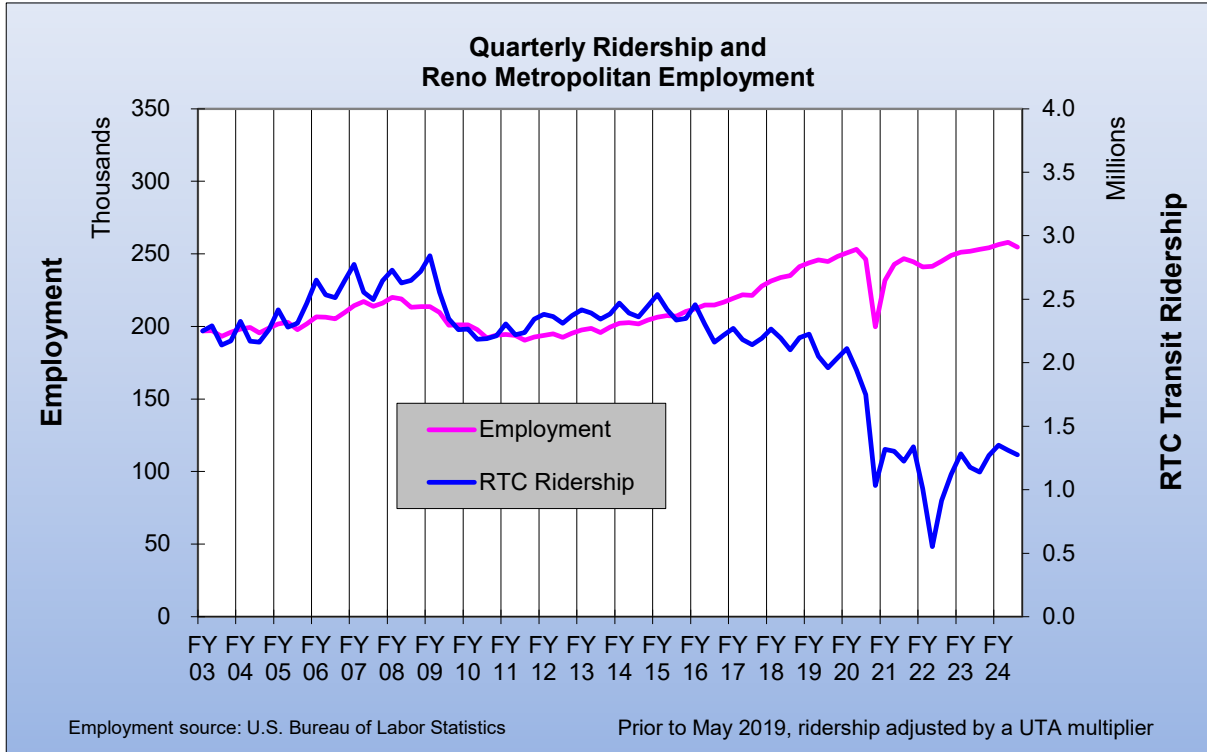
FISCAL YEAR COMPARISONS



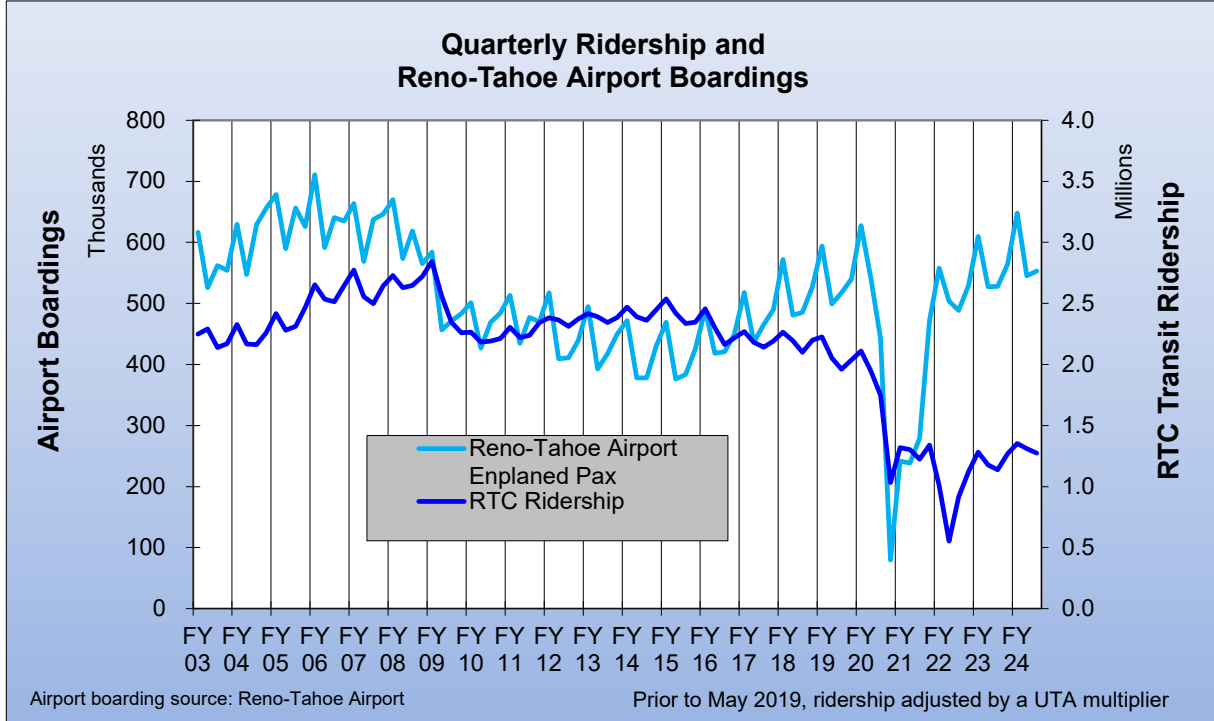
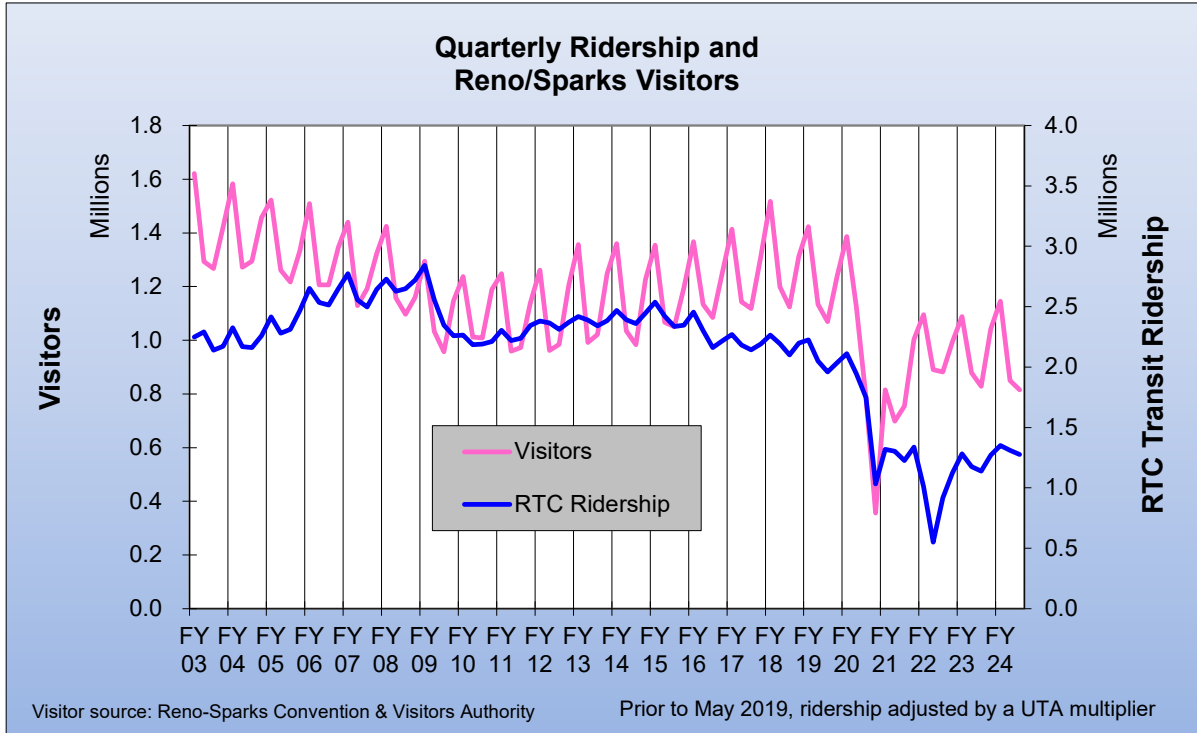
| RTC Transit Fixed-Route Bus | | | | | | |
|--|-------------|------------------|-----------------------|---------------------------|-------------|------------------|
| Weighted Average Daily Ridership | | | | | | |
| Rolling 12-Month Ridership Comparison | | | | | | |
| Most Recent 12 Months | | | Percent Change | Previous 12 Months | | |
| Month | Year | Ridership | | Month | Year | Ridership |
| Oct | | 15,353 | 8.4% | Oct | | 14,157 |
| Nov | | 14,320 | 9.4% | Nov | | 13,086 |
| Dec | | 13,931 | 15.6% | Dec | | 12,049 |
| Jan | 2024 | 14,262 | 17.1% | Jan | 2023 | 12,184 |
| Feb | | 15,294 | 21.0% | Feb | | 12,638 |
| March | | 14,500 | 11.7% | March | | 12,981 |
| Apr | | 15,129 | 7.9% | Apr | | 14,016 |
| May | | 15,373 | 9.7% | May | | 14,008 |
| Jun | | 16,157 | 13.6% | Jun | | 14,227 |
| Jul | | 15,924 | 11.7% | Jul | | 14,257 |
| Aug | | 16,462 | 12.0% | Aug | | 14,698 |
| Sep | | 17,068 | 8.9% | Sep | | 15,675 |
| | | | | | | |
| | | | | | | |



RTC Transit Fixed-Route Bus



RTC Transit Fixed-Route Bus



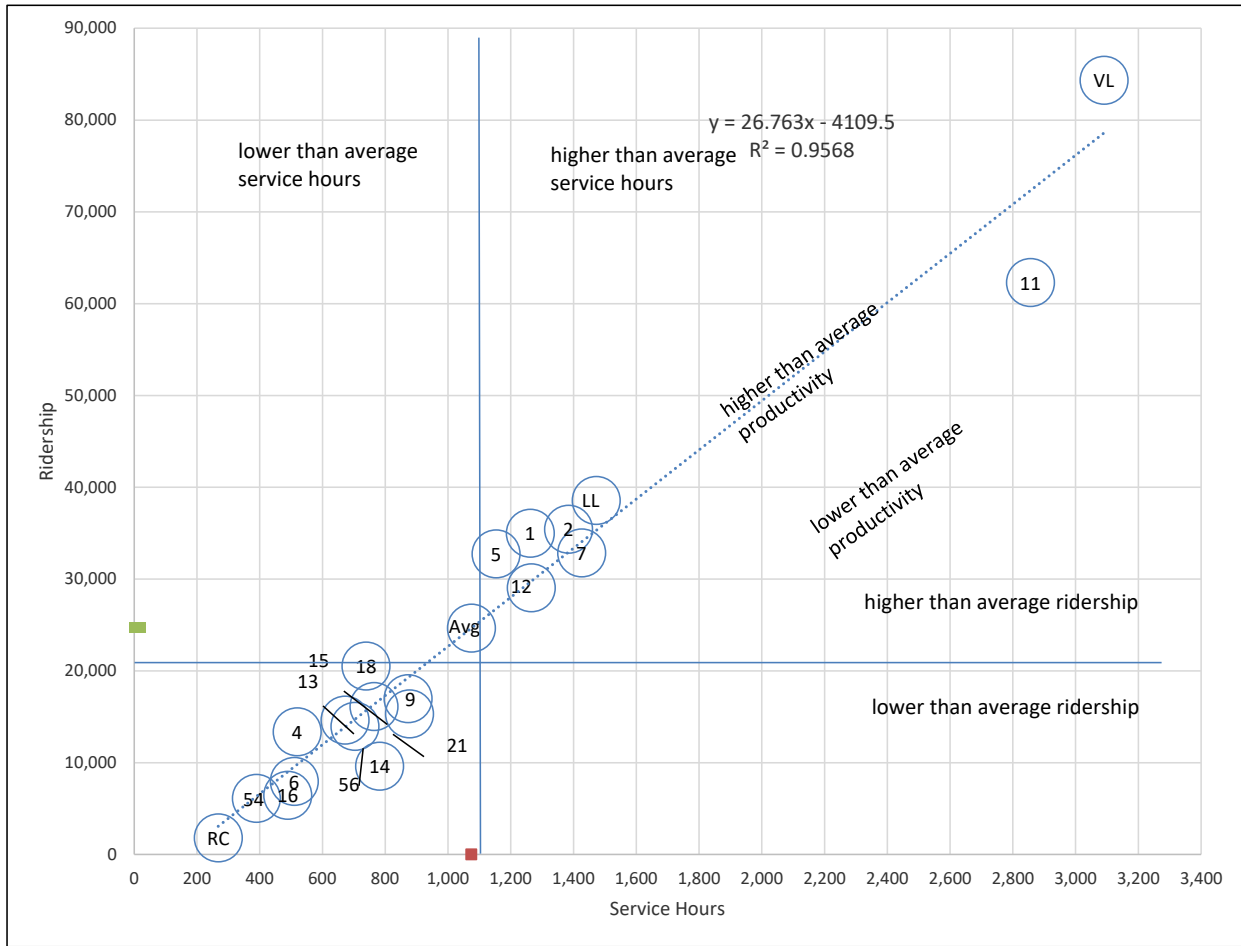
RTC Route Comparison Report

Sep 2024

| Route * | Productivity | Route | Svs Hours Change Fr. Last Year | Route | Ridership | Route | Ridership Change From Last Year |
|---------|--------------|--------|--------------------------------|--------|-----------|--------|---------------------------------|
| 5 | 28.4 | 11 | 15.6% | RAP VL | 84,340 | 16 | 38.7% |
| 18 | 27.8 | 12 | 12.6% | 11 | 62,303 | 11 | 35.5% |
| 1 | 27.7 | 21 | 7.5% | RAP LL | 38,571 | 12 | 19.1% |
| RAP VL | 27.3 | RAP VL | 7.0% | 2 | 35,435 | 56 | 13.2% |
| RAP LL | 26.2 | RAP LL | 5.1% | 1 | 34,989 | 21 | 11.9% |
| 4 | 25.7 | 56 | 4.6% | 7 | 32,848 | 9 | 11.8% |
| 2 | 25.6 | TOTAL | 4.1% | 5 | 32,751 | 13 | 10.3% |
| 7 | 23.0 | 15 | 0.7% | 12 | 29,042 | 2 | 8.4% |
| 12 | 23.0 | RTC RC | 0.7% | 18 | 20,528 | 6 | 8.0% |
| TOTAL | 22.9 | 1 | 0.4% | 9 | 16,978 | 15 | 7.7% |
| 11 | 21.8 | 16 | 0.4% | 15 | 16,117 | 7 | 7.1% |
| 13 | 21.8 | 13 | 0.3% | 21 | 15,314 | TOTAL | 6.8% |
| 15 | 21.1 | 9 | -0.1% | 13 | 14,629 | RTC RC | 5.7% |
| 56 | 19.8 | 14 | -0.2% | 56 | 13,953 | 5 | 3.7% |
| 9 | 19.5 | 18 | -0.3% | 4 | 13,370 | 54 | 3.7% |
| 21 | 17.5 | 54 | -0.3% | 14 | 9,622 | 14 | -0.1% |
| 54 | 15.7 | 6 | -0.3% | 6 | 7,964 | 4 | -0.7% |
| 6 | 15.6 | 5 | -0.4% | 16 | 6,445 | 18 | -1.8% |
| 16 | 13.2 | 4 | -0.5% | 54 | 6,112 | 1 | -3.1% |
| 14 | 12.3 | 2 | -0.7% | RTC RC | 1,806 | RAP VL | -3.3% |
| RTC RC | 6.7 | 7 | -2.5% | TOTAL | 493,117 | RAP LL | -3.7% |

* - RTC RC is RTC REGIONAL CONNECTOR.

RTC Route Comparison Chart Sep 2024



"higher" and "lower" refer to higher or lower than the average of all routes (not the system average)

RTC TRANSIT OPERATING STATISTICS

Sep 2024

| Route | Total Ridership | Previous Year | Change | Vehicle Revenue Hours | Previous Year | Change | Rides/VRH | Previous Year | Change |
|-----------------|-----------------|----------------|-------------|-----------------------|---------------|-------------|-------------|---------------|-------------|
| RAPID VL | 84,340 | 87,204 | -3.3% | 3,091 | 2,890 | 7.0% | 27.3 | 30.2 | -9.6% |
| RAPID LL | 38,571 | 40,051 | -3.7% | 1,472 | 1,401 | 5.1% | 26.2 | 28.6 | -8.4% |
| 1 | 34,989 | 36,094 | -3.1% | 1,262 | 1,258 | 0.4% | 27.7 | 28.7 | -3.4% |
| 2 | 35,435 | 32,688 | 8.4% | 1,384 | 1,394 | -0.7% | 25.6 | 23.4 | 9.2% |
| 4 | 13,370 | 13,468 | -0.7% | 519 | 522 | -0.5% | 25.7 | 25.8 | -0.2% |
| 5 | 32,751 | 31,572 | 3.7% | 1,153 | 1,158 | -0.4% | 28.4 | 27.3 | 4.2% |
| 6 | 7,964 | 7,375 | 8.0% | 510 | 512 | -0.3% | 15.6 | 14.4 | 8.3% |
| 7 | 32,848 | 30,659 | 7.1% | 1,426 | 1,462 | -2.5% | 23.0 | 21.0 | 9.8% |
| 9 | 16,978 | 15,191 | 11.8% | 873 | 874 | -0.1% | 19.5 | 17.4 | 11.9% |
| 11 | 62,303 | 45,965 | 35.5% | 2,856 | 2,470 | 15.6% | 21.8 | 18.6 | 17.2% |
| 12 | 29,042 | 24,392 | 19.1% | 1,265 | 1,123 | 12.6% | 23.0 | 21.7 | 5.7% |
| 13 | 14,629 | 13,257 | 10.3% | 672 | 670 | 0.3% | 21.8 | 19.8 | 10.0% |
| 14 | 9,622 | 9,630 | -0.1% | 782 | 784 | -0.2% | 12.3 | 12.3 | 0.2% |
| 15 | 16,117 | 14,964 | 7.7% | 764 | 759 | 0.7% | 21.1 | 19.7 | 7.0% |
| 16 | 6,445 | 4,646 | 38.7% | 489 | 487 | 0.4% | 13.2 | 9.5 | 38.2% |
| 18 | 20,528 | 20,899 | -1.8% | 739 | 741 | -0.3% | 27.8 | 28.2 | -1.5% |
| 21 | 15,314 | 13,689 | 11.9% | 877 | 816 | 7.5% | 17.5 | 16.8 | 4.1% |
| 54 | 6,112 | 5,894 | 3.7% | 389 | 390 | -0.3% | 15.7 | 15.1 | 4.0% |
| 56 | 13,953 | 12,324 | 13.2% | 704 | 673 | 4.6% | 19.8 | 18.3 | 8.2% |
| RC Carson | 1,806 | 1,708 | 5.7% | 268 | 266 | 0.7% | 6.7 | 6.4 | 5.0% |
| Misc. Service | | 0 | N/A | | 0 | N/A | | 0.0 | N/A |
| Sep 2024 | 493,117 | 461,670 | 6.8% | 21,497 | 20,650 | 4.1% | 22.9 | 22.4 | 2.6% |
| Sep '23 | 461,670 | | | 20,650 | | | 22.4 | | |
| Perc. Change | 6.8% | | | 4.1% | | | 2.6% | | |

RTC TRANSIT OPERATING STATISTICS

Sep 2024

| Route | Vehicle Revenue Miles | Rides/VRM | Est. Gross Operating Cost | Est. Cost Per VRH | Est. Cost Per VRM | Est. Cost Per Ride |
|-----------------|-----------------------|-------------|---------------------------|-------------------|-------------------|--------------------|
| RAPID VL | 32,006 | 2.64 | \$509,496 | \$165 | \$15.92 | \$6.04 |
| RAPID LL | 14,217 | 2.71 | \$242,713 | \$165 | \$17.07 | \$6.29 |
| 1 | 12,481 | 2.80 | \$208,074 | \$165 | \$16.67 | \$5.95 |
| 2 | 14,549 | 2.44 | \$228,172 | \$165 | \$15.68 | \$6.44 |
| 4 | 6,733 | 1.99 | \$85,606 | \$165 | \$12.72 | \$6.40 |
| 5 | 15,443 | 2.12 | \$190,077 | \$165 | \$12.31 | \$5.80 |
| 6 | 4,730 | 1.68 | \$84,134 | \$165 | \$17.79 | \$10.56 |
| 7 | 25,333 | 1.30 | \$235,070 | \$165 | \$9.28 | \$7.16 |
| 9 | 9,855 | 1.72 | \$143,898 | \$165 | \$14.60 | \$8.48 |
| 11 | 30,165 | 2.07 | \$470,860 | \$165 | \$15.61 | \$7.56 |
| 12 | 12,682 | 2.29 | \$208,563 | \$165 | \$16.45 | \$7.18 |
| 13 | 6,185 | 2.37 | \$110,714 | \$165 | \$17.90 | \$7.57 |
| 14 | 7,537 | 1.28 | \$128,945 | \$165 | \$17.11 | \$13.40 |
| 15 | 7,869 | 2.05 | \$125,956 | \$165 | \$16.01 | \$7.82 |
| 16 | 3,380 | 1.91 | \$80,640 | \$165 | \$23.86 | \$12.51 |
| 18 | 8,030 | 2.56 | \$121,802 | \$165 | \$15.17 | \$5.93 |
| 21 | 9,619 | 1.59 | \$144,617 | \$165 | \$15.03 | \$9.44 |
| 54 | 6,254 | 0.98 | \$64,209 | \$165 | \$10.27 | \$10.51 |
| 56 | 10,370 | 1.35 | \$115,983 | \$165 | \$11.18 | \$8.31 |
| RC Carson | 8,054 | 0.22 | \$44,180 | \$165 | \$5.49 | \$24.46 |
| Misc. Service | | | | | | |
| Sep 2024 | 245,492 | 2.01 | \$3,543,708 | \$165 | \$14.44 | \$7.19 |
| Sep '23 | 236,367 | 1.95 | \$3,259,868 | \$158 | \$13.79 | \$7.06 |
| Perc. Change | 3.9% | 2.8% | 8.7% | 4.4% | 4.7% | 1.8% |

RTC Transit Operating Statistics

Oct'23 - Sep '24

| Route | Total Ridership | Previous Year | Change | Vehicle Revenue Hours | Previous Year | Change | Rides/VRH | Previous Year | Change |
|--------------------------|------------------|------------------|--------------|-----------------------|----------------|-------------|-------------|---------------|-------------|
| RAPID VL | 964,048 | 878,319 | 10% | 37,312 | 38,077 | -2% | 25.8 | 23.1 | 12% |
| RAPID LL | 444,725 | 427,660 | 4% | 17,816 | 17,963 | -1% | 25.0 | 23.8 | 5% |
| 1 | 419,412 | 437,140 | -4% | 15,366 | 17,037 | -10% | 27.3 | 25.7 | 6% |
| 2 | 382,062 | 354,654 | 8% | 17,127 | 17,407 | -2% | 22.3 | 20.4 | 9% |
| 4 | 149,475 | 133,331 | 12% | 6,345 | 6,426 | -1% | 23.6 | 20.7 | 14% |
| 5 | 346,549 | 326,131 | 6% | 14,230 | 14,262 | 0% | 24.4 | 22.9 | 7% |
| 6 | 88,791 | 72,193 | 23% | 6,253 | 5,909 | 6% | 14.2 | 12.2 | 16% |
| 7 | 351,049 | 317,206 | 11% | 17,565 | 18,937 | -7% | 20.0 | 16.8 | 19% |
| 9 | 191,207 | 156,336 | 22% | 10,687 | 11,918 | -10% | 17.9 | 13.1 | 36% |
| 11 | 628,092 | 405,769 | 55% | 35,231 | 17,661 | 99% | 17.8 | 23.0 | -22% |
| 12 | 313,737 | 274,993 | 14% | 15,362 | 14,232 | 8% | 20.4 | 19.3 | 6% |
| 13 | 165,470 | 135,586 | 22% | 8,282 | 8,076 | 3% | 20.0 | 16.8 | 19% |
| 14 | 109,449 | 91,791 | 19% | 9,613 | 8,698 | 11% | 11.4 | 10.6 | 8% |
| 15 | 175,283 | 142,667 | 23% | 9,382 | 9,257 | 1% | 18.7 | 15.4 | 21% |
| 16 | 62,853 | 49,219 | 28% | 5,990 | 5,105 | 17% | 10.5 | 9.6 | 9% |
| 18 | 240,065 | 252,592 | -5% | 9,118 | 9,677 | -6% | 26.3 | 26.1 | 1% |
| 21 | 166,497 | 143,671 | 16% | 10,339 | 8,495 | 22% | 16.1 | 16.9 | -5% |
| 54 | 69,322 | 65,084 | 7% | 4,773 | 5,444 | -12% | 14.5 | 12.0 | 21% |
| 56 | 154,877 | 120,834 | 28% | 8,685 | 7,358 | 18% | 17.8 | 16.4 | 9% |
| RC Carson | 20,174 | 18,979 | 6% | 3,334 | 3,332 | 0% | 6.1 | 5.7 | 6% |
| Misc. Service | | | | | | | | | |
| Current 12 Months | 5,443,137 | 4,935,391 | 10.3% | 262,808 | 254,013 | 3.5% | 20.7 | 19.4 | 6.6% |
| Previous 12 Months | 4,935,391 | | | 254,013 | | | 19.4 | | |
| Perc. Change | 10.3% | | | 3.5% | | | 6.6% | | |

RTC Transit Operating Statistics

Oct'23 - Sep '24

| Route | Vehicle Revenue Miles (thousand) | Rides/VRM | Est. Gross Operating Cost (thousand) | Est. Cost Per VRH | Est. Cost Per VRM | Est. Cost Per Ride |
|--------------------------|----------------------------------|-------------|--------------------------------------|-------------------|-------------------|--------------------|
| RAPID VL | 363.6 | 2.65 | \$5,957 | \$160 | \$16.38 | \$6.18 |
| RAPID LL | 171.8 | 2.59 | \$2,844 | \$160 | \$16.55 | \$6.40 |
| 1 | 151.9 | 2.76 | \$2,453 | \$160 | \$16.14 | \$5.85 |
| 2 | 179.7 | 2.13 | \$2,734 | \$160 | \$15.22 | \$7.16 |
| 4 | 82.2 | 1.82 | \$1,013 | \$160 | \$12.32 | \$6.78 |
| 5 | 192.7 | 1.80 | \$2,272 | \$160 | \$11.79 | \$6.56 |
| 6 | 57.9 | 1.53 | \$998 | \$160 | \$17.23 | \$11.24 |
| 7 | 311.3 | 1.13 | \$2,804 | \$160 | \$9.01 | \$7.99 |
| 9 | 120.4 | 1.59 | \$1,706 | \$160 | \$14.17 | \$8.92 |
| 11 | 363.0 | 1.73 | \$5,623 | \$160 | \$15.49 | \$8.95 |
| 12 | 155.1 | 2.02 | \$2,452 | \$160 | \$15.81 | \$7.82 |
| 13 | 75.6 | 2.19 | \$1,322 | \$160 | \$17.49 | \$7.99 |
| 14 | 92.6 | 1.18 | \$1,535 | \$160 | \$16.56 | \$14.02 |
| 15 | 96.6 | 1.81 | \$1,498 | \$160 | \$15.51 | \$8.54 |
| 16 | 41.5 | 1.51 | \$956 | \$160 | \$23.04 | \$15.21 |
| 18 | 99.1 | 2.42 | \$1,456 | \$160 | \$14.69 | \$6.06 |
| 21 | 113.3 | 1.47 | \$1,651 | \$160 | \$14.57 | \$9.92 |
| 54 | 76.6 | 0.90 | \$762 | \$160 | \$9.94 | \$10.99 |
| 56 | 128.0 | 1.21 | \$1,386 | \$160 | \$10.83 | \$8.95 |
| RC Carson | 100.3 | 0.20 | \$532 | \$160 | \$5.31 | \$26.38 |
| Misc. Service | | | | | | |
| Current 12 Months | 2,973.4 | 1.83 | \$41,953 | \$160 | \$14.11 | \$7.71 |
| Previous 12 Months | 2,805.4 | 1.76 | \$38,120 | \$150 | \$13.59 | \$7.72 |
| Perc. Change | 6.0% | 4.1% | 10.1% | 6.4% | 3.8% | -0.2% |

September

Oct 2023 - Sep 2024

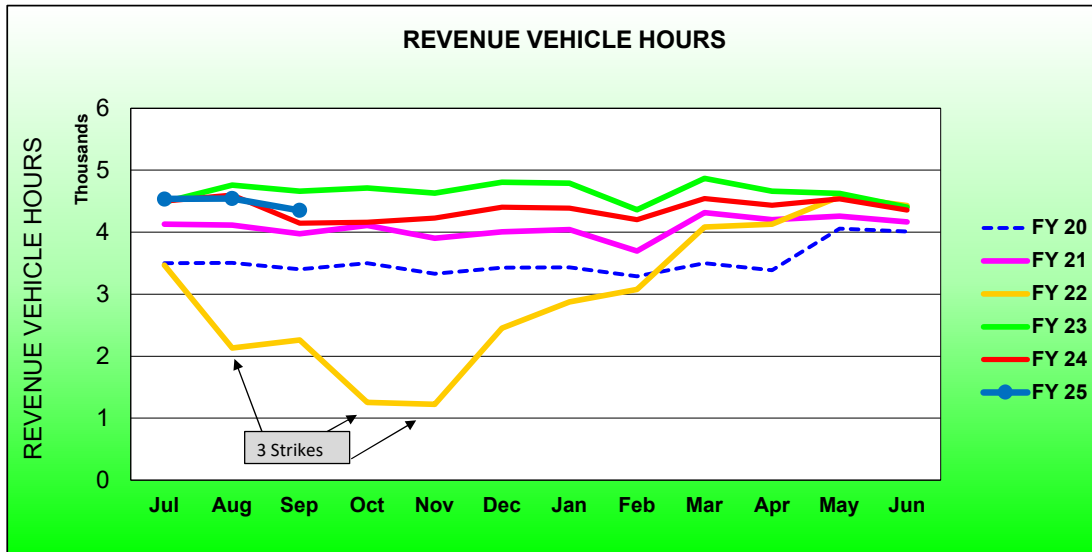
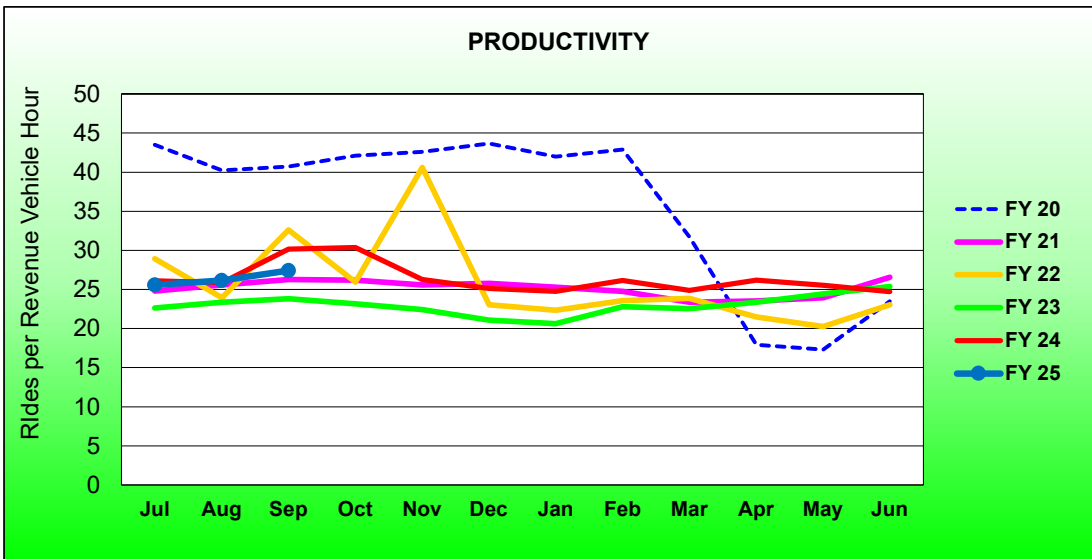
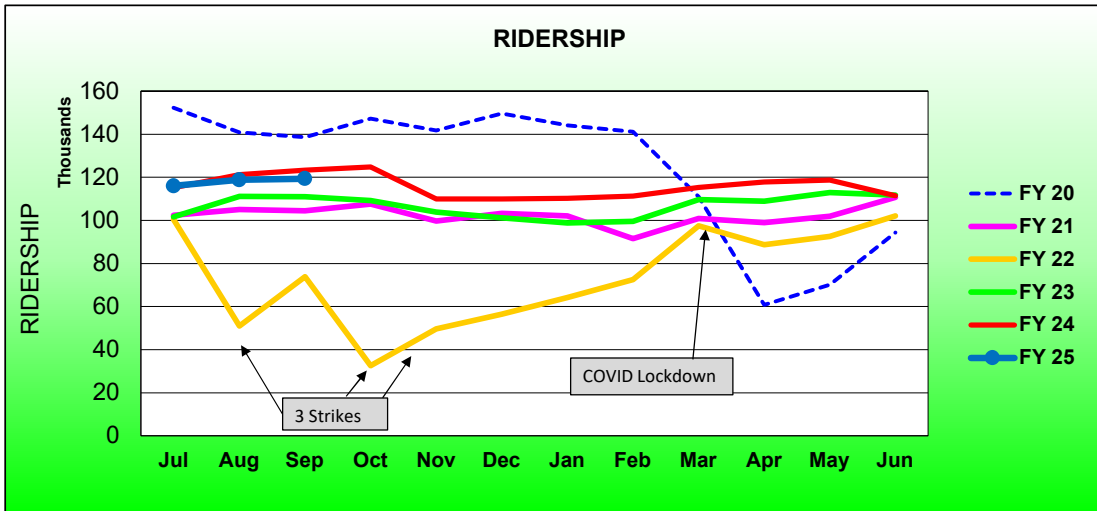
| | 2024 | 2023 | Percent Change | Current 12 Months | Previous 12 Month | Percent Change |
|---------------------------------|----------------|----------------|----------------|-------------------|-------------------|----------------|
| Single Ride Cash | | | | | | |
| Full Fare | 3,428 | 5,338 | -36% | 49,470 | 63,414 | -22% |
| Reduced* | 5,475 | 7,240 | -24% | 72,248 | 93,328 | -23% |
| RTC ACCESS ID | 174 | 362 | -52% | 4,070 | 4,183 | -3% |
| Total | 9,077 | 12,940 | -30% | 125,788 | 160,925 | -22% |
| Day Pass Cash | | | | | | |
| Full Fare | 53,491 | 57,883 | -7.6% | 664,476 | 723,581 | -8% |
| Reduced* | 67,520 | 70,045 | -3.6% | 816,332 | 845,759 | -3.5% |
| Total | 121,011 | 127,928 | -5.4% | 1,480,808 | 1,569,340 | -6% |
| Pre-Purchase Period Pass | | | | | | |
| Full Fare | 123,545 | 114,407 | 8.0% | 1,375,208 | 1,205,611 | 14% |
| Reduced* | 168,413 | 140,567 | 20% | 1,774,351 | 1,431,458 | 24% |
| Total | 291,958 | 254,974 | 15% | 3,149,559 | 2,637,069 | 19% |
| Transfers | 371 | 91 | 308% | 3,118 | 2,772 | 12% |
| Flow Through | 7,428 | 5,146 | 44% | 60,507 | 62,948 | -4% |
| Free Rides | 32,841 | 35,680 | -8% | 343,108 | 302,455 | 13% |
| U/Ed-Pass Free Rides | 27,464 | 21,568 | 27% | 230,857 | 162,887 | 42% |
| Stored Ride Pass | 2,968 | 3,343 | -11% | 38,675 | 36,995 | 5% |
| Full Fare | 198,944 | 197,365 | 0.8% | 2,282,899 | 2,174,851 | 5.0% |
| Reduced* | 294,094 | 264,172 | 11% | 3,158,378 | 2,759,157 | 14% |
| Total Ridership | 493,117 | 461,670 | 6.8% | 5,443,137 | 4,935,391 | 10.3% |
| Previous 12 Months | 461,670 | 426,698 | | 4,935,391 | | |
| Change | 6.8% | 8.2% | | 10.3% | | |
| Vehicle Revenue Hours | 21,497 | 20,650 | 4.1% | 262,808 | 254,013 | 3.5% |
| Previous 12 Months | 20,650 | 21,274 | | 254,013 | | |
| Change | 4.1% | -2.9% | | 3.5% | | |
| Rides / VRH | 22.9 | 22.4 | 2.6% | 20.7 | 19.4 | 6.6% |
| Previous 12 Months | 22.4 | 20.1 | | 19.4 | | |
| Change | 2.6% | 11.5% | | 6.6% | | |
| Vehicle Revenue Miles | 245,492 | 236,367 | 3.9% | 2,973,370 | 2,805,408 | 6.0% |
| Rides / VRM | 2.01 | 1.95 | 2.8% | 1.83 | 1.76 | 4.1% |
| Est. Gross Operating Cost | \$3,543,708 | \$3,259,868 | 8.7% | \$41,953,143 | \$38,120,493 | 10.1% |
| Est. Cost Per VRH | \$165 | \$158 | 4.4% | \$159.63 | \$150.07 | 6.9% |
| Est. Cost Per VRM | \$14.44 | \$13.79 | 4.7% | \$14.11 | \$13.59 | 3.8% |
| Est. Cost Per Ride | \$7.19 | \$7.06 | 1.8% | \$7.71 | \$7.72 | -0.2% |

* - Reduced fare includes Youth, Senior, Disabled, and US Veterans

| RTC RAPID Virginia Line and Route 1 | | | | | | |
|--|-------------|------------------|-----------------------|---------------------------|-------------|------------------|
| ROLLING 12-MONTH COMPARISON | | | | | | |
| Most Recent 12 Months | | | Percent Change | Previous 12 Months | | |
| Month | Year | Ridership | | Month | Year | Ridership |
| Oct | | 124,715 | 14.2% | Oct | | 109,180 |
| Nov | | 109,893 | 5.8% | Nov | | 103,868 |
| Dec | | 109,966 | 8.6% | Dec | | 101,252 |
| Jan | 2024 | 110,229 | 11.6% | Jan | 2023 | 98,740 |
| Feb | | 111,239 | 11.8% | Feb | | 99,491 |
| March | | 115,379 | 5.2% | March | | 109,639 |
| Apr | | 117,811 | 8.1% | Apr | | 108,968 |
| May | | 118,653 | 5.1% | May | | 112,931 |
| Jun | | 111,479 | -0.2% | Jun | | 111,746 |
| Jul | | 115,958 | 0.7% | Jul | | 115,149 |
| Aug | | 118,809 | -2.0% | Aug | | 121,197 |
| Sep | | 119,329 | -3.2% | Sep | | 123,298 |
| TOTAL | | 1,383,460 | 5.2% | TOTAL | | 1,315,459 |

* - Strikes occurred Aug 3-13, Sep 27-Oct 20, Nov 9-Dec 3, 2021

RTC RAPID Virginia Line and Route 1 Fiscal Year Comparisons



| RTC RAPID Lincoln Line and Route 11 | | | | | | |
|--|-------------|------------------|-----------------------|---------------------------|-------------|------------------|
| Rolling 12-Month Comparison | | | | | | |
| Most Recent 12 Months | | | Percent Change | Previous 12 Months | | |
| Month | Year | Ridership | | Month | Year | Ridership |
| Oct | | 86,638 | 30% | Oct | | 66,800 |
| Nov | | 76,791 | 32% | Nov | | 58,346 |
| Dec | | 77,855 | 30% | Dec | | 59,985 |
| Jan | 2024 | 82,348 | 37% | Jan | 2023 | 60,272 |
| Feb | | 81,020 | 43% | Feb | | 56,669 |
| Mar | | 86,512 | 34% | Mar | | 64,370 |
| Apr | | 90,650 | 43% | Apr | | 63,439 |
| May | | 94,524 | 27% | May | | 74,197 |
| Jun | | 91,699 | 20% | Jun | | 76,479 |
| Jul | | 97,939 | 21% | Jul | | 81,268 |
| Aug | | 105,967 | 24% | Aug | | 85,588 |
| Sep | | 100,874 | 17% | Sep | | 86,016 |
| TOTAL | | 1,072,817 | 29% | TOTAL | | 833,429 |

RTC Transit Operating Statistics

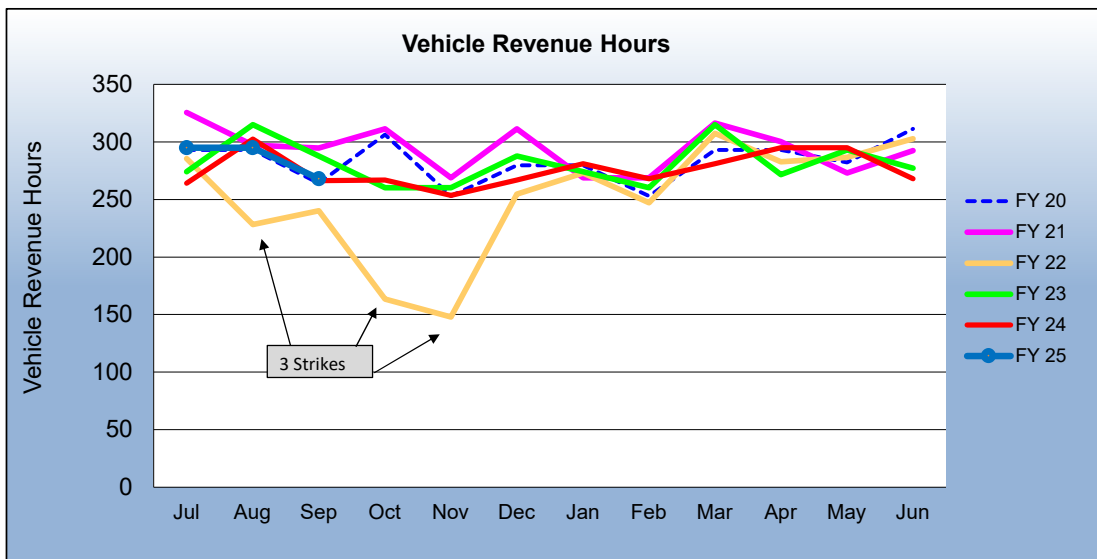
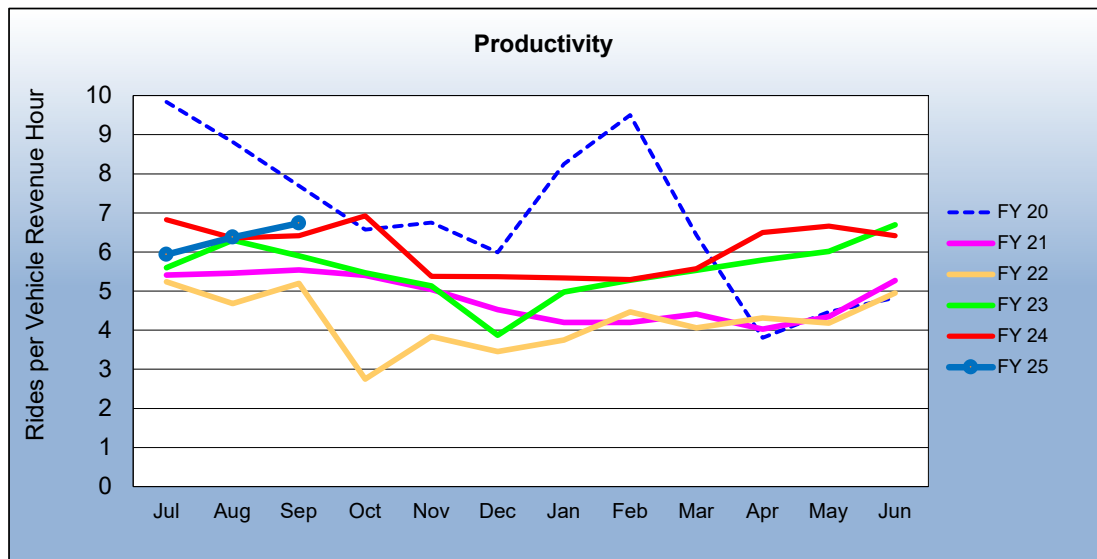
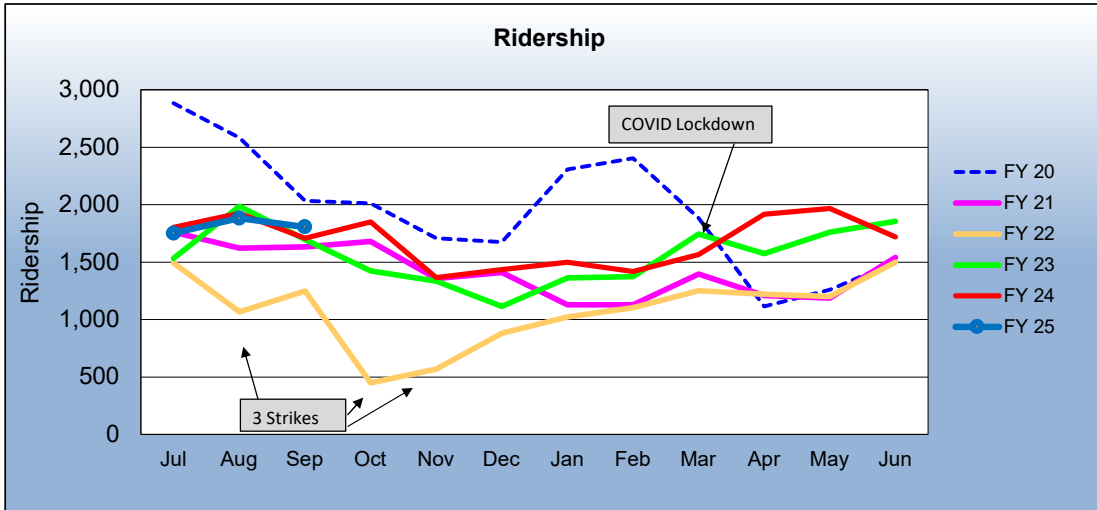
| RTC RAPID Virginia & Lincoln Lines | | | | | | |
|---|-------------|------------------|-----------------------|---------------------------|-------------|------------------|
| ROLLING 12-MONTH COMPARISON | | | | | | |
| Most Recent 12 Months | | | Percent Change | Previous 12 Months | | |
| Month | Year | Ridership | | Month | Year | Ridership |
| Oct | | 127,380 | 25% | Oct | | 101,939 |
| Nov | | 111,741 | 14% | Nov | | 98,227 |
| Dec | | 112,141 | 18% | Dec | | 94,884 |
| Jan | 2024 | 111,384 | 17% | Jan | 2023 | 94,823 |
| Feb | | 111,895 | 17% | Feb | | 95,606 |
| Mar | | 116,399 | 10% | Mar | | 105,699 |
| Apr | | 120,299 | 14% | Apr | | 105,548 |
| May | | 122,131 | 5.1% | May | | 116,256 |
| Jun | | 113,689 | -2.7% | Jun | | 116,866 |
| Jul | | 117,265 | -2.7% | Jul | | 120,564 |
| Aug | | 121,538 | -5.3% | Aug | | 128,312 |
| Sep | | 122,911 | -3.4% | Sep | | 127,255 |
| TOTAL | | 1,408,773 | 7.9% | TOTAL | | 1,305,979 |

* - Strikes occurred Aug 3-13, Sep 27-Oct 20, Nov 9-Dec 3, 2021

| RTC REGIONAL CONNECTOR - Carson Line | | | | | | |
|---|-------------|------------------|-----------------------|---------------------------|-------------|------------------|
| Rolling 12 Month Comparison | | | | | | |
| Most Recent 12 Months | | | Percent Change | Previous 12 Months | | |
| Month | Year | Ridership | | Month | Year | Ridership |
| Oct | | 1,849 | 30% | Oct | | 1,424 |
| Nov | | 1,365 | 2.2% | Nov | | 1,335 |
| Dec | | 1,434 | 28.8% | Dec | | 1,113 |
| Jan | 2024 | 1,500 | 10.0% | Jan | 2023 | 1,364 |
| Feb | | 1,419 | 3.3% | Feb | | 1,374 |
| Mar | | 1,567 | -10.1% | Mar | | 1,743 |
| Apr | | 1,916 | 21.7% | Apr | | 1,575 |
| May | | 1,965 | 11.5% | May | | 1,762 |
| Jun | | 1,720 | -7.3% | Jun | | 1,855 |
| Jul | | 1,751 | -2.8% | Jul | | 1,802 |
| Aug | | 1,882 | -2.2% | Aug | | 1,924 |
| Sep | | 1,806 | 5.7% | Sep | | 1,708 |
| TOTAL | | 20,174 | 6.3% | TOTAL | | 18,979 |

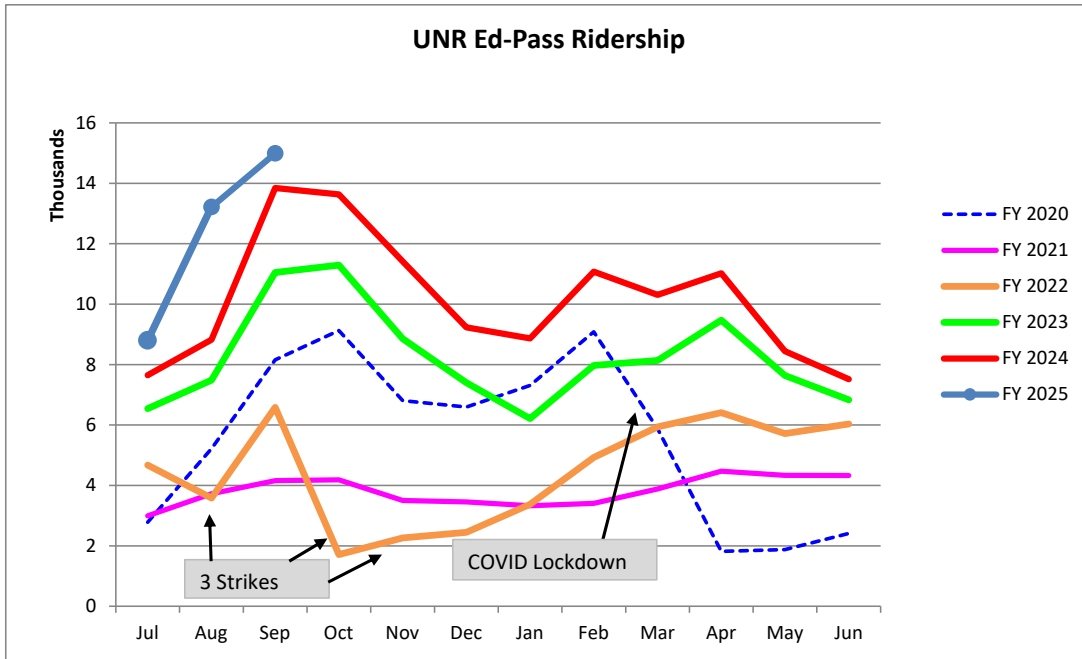
* - Strikes occurred Aug 3-13, Sep 27-Oct 20, Nov 9-Dec 3, 2021

RTC REGIONAL CONNECTOR Carson Line Fiscal Year Comparisons



**RTC Transit Fixed Route Bus Ridership Report
University of Nevada, Reno Ed-Pass Program
FY 2024**

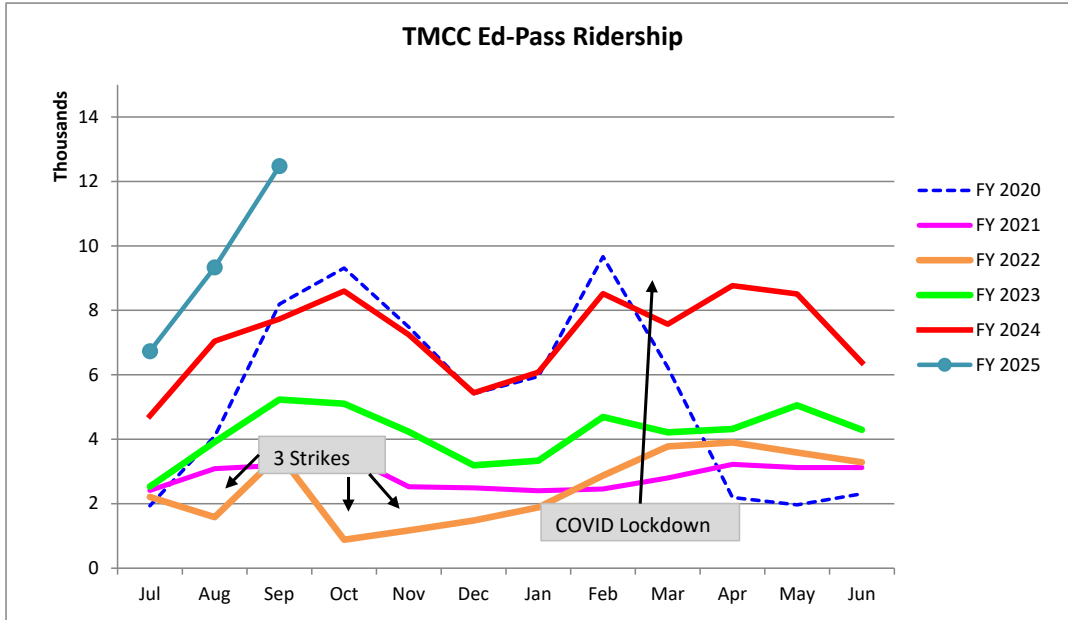
| Category | Jul | Aug | Sep | Oct | Nov | Dec | Jan | Feb | Mar | Apr | May | Jun | FYTD |
|----------------|-------|--------|--------|--------|--------|-------|-------|--------|--------|--------|-------|-------|---------|
| FY 2020 | 2,779 | 5,218 | 8,159 | 9,127 | 6,808 | 6,592 | 7,312 | 9,084 | 5,873 | 1,818 | 1,877 | 2,410 | 67,057 |
| FY 2021 | 2,991 | 3,723 | 4,156 | 4,185 | 3,502 | 3,455 | 3,329 | 3,409 | 3,881 | 4,471 | 4,333 | 4,330 | 45,765 |
| FY 2022 | 4,670 | 3,581 | 6,584 | 1,710 | 2,264 | 2,447 | 3,376 | 4,924 | 5,936 | 6,410 | 5,716 | 6,033 | 53,651 |
| FY 2023 | 6,539 | 7,482 | 11,046 | 11,291 | 8,857 | 7,399 | 6,215 | 7,973 | 8,138 | 9,470 | 7,640 | 6,833 | 98,883 |
| FY 2024 | 7,650 | 8,824 | 13,841 | 13,631 | 11,414 | 9,231 | 8,864 | 11,077 | 10,309 | 11,024 | 8,445 | 7,516 | 121,826 |
| Percent Change | 15% | 50% | 8.3% | | | | | | | | | | |
| FY 2025 | 8,797 | 13,215 | 14,988 | | | | | | | | | | |



| Fiscal Year | Rides |
|----------------|---------|
| FY 2003 | 51,228 |
| FY 2004 | 55,114 |
| FY 2005 | 69,685 |
| FY 2006 | 88,070 |
| FY 2007 | 85,295 |
| FY 2008 | 86,461 |
| FY 2009 | 88,385 |
| FY 2010 | 79,518 |
| FY 2011 | 75,925 |
| FY 2012 | 75,300 |
| FY 2013 | 50,438 |
| FY 2014 | 40,854 |
| FY 2015 | 41,778 |
| FY 2016 | 50,022 |
| FY 2017 | 40,581 |
| FY 2018 | 34,154 |
| FY 2019 | 30,251 |
| U-Pass: | |
| FY 2020 | 67,057 |
| FY 2021 | 45,765 |
| FY 2022 | 53,651 |
| FY 2023 | 98,883 |
| FY 2024 | 121,826 |

**RTC Transit Fixed Route Bus Ridership Report
Truckee Meadows Community Ed-Pass Program
FY 2024**

| Category | Jul | Aug | Sep | Oct | Nov | Dec | Jan | Feb | Mar | Apr | May | Jun | FYTD |
|----------------|-------|-------|--------|-------|-------|-------|-------|-------|-------|-------|-------|-------|--------|
| FY 2020 | 1,933 | 4,086 | 8,193 | 9,311 | 7,479 | 5,413 | 5,945 | 9,668 | 6,227 | 2,193 | 1,968 | 2,310 | 64,726 |
| FY 2021 | 2,414 | 3,090 | 3,194 | 3,535 | 2,527 | 2,493 | 2,402 | 2,459 | 2,800 | 3,225 | 3,126 | 3,124 | 34,389 |
| FY 2022 | 2,208 | 1,584 | 3,516 | 883 | 1,170 | 1,480 | 1,886 | 2,875 | 3,773 | 3,899 | 3,585 | 3,287 | 30,146 |
| FY 2023 | 2,533 | 3,913 | 5,233 | 5,103 | 4,231 | 3,195 | 3,335 | 4,690 | 4,213 | 4,314 | 5,051 | 4,292 | 50,103 |
| FY 2024 | 4,725 | 7,045 | 7,727 | 8,596 | 7,244 | 5,440 | 6,081 | 8,520 | 7,569 | 8,768 | 8,510 | 6,384 | 86,609 |
| Percent Change | 43% | 32% | 61% | | | | | | | | | | |
| FY 2025 | 6,734 | 9,334 | 12,476 | | | | | | | | | | |



| Fiscal Year | Rides |
|-------------|---------|
| FY 2013 | 90,583 |
| FY 2014 | 113,700 |
| FY 2015 | 94,112 |
| FY 2016 | 83,375 |
| FY 2017 | 66,110 |
| FY 2018 | 53,027 |
| FY 2019 | 37,191 |

| Ed-Pass: | Rides |
|----------|--------|
| FY 2020 | 64,726 |
| FY 2021 | 34,389 |
| FY 2022 | 30,146 |
| FY 2023 | 50,103 |
| FY 2024 | 86,609 |