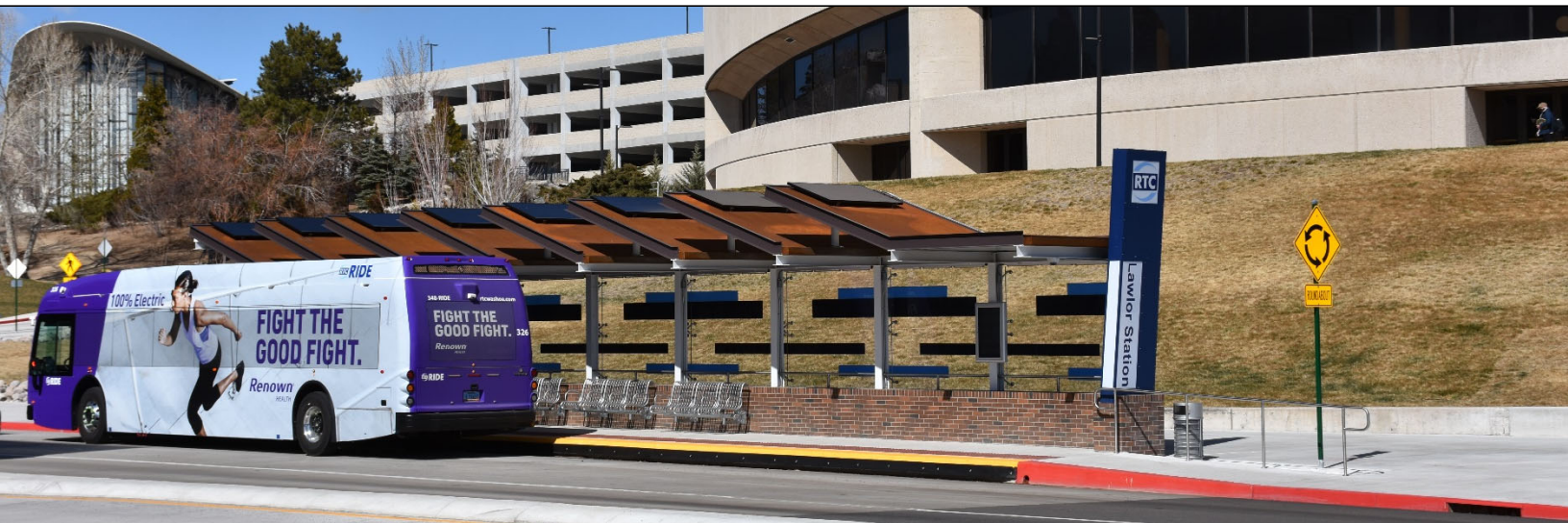




REGIONAL TRANSPORTATION COMMISSION
Public Transportation • Streets and Highways • Planning



RTC Transit Fixed Route Bus Operating Statistics

**RTC RIDE
RTC RAPID
RTC REGIONAL CONNECTOR**

November 2024

RTC Transit Fixed Route Bus Operating Statistics Report

TABLE OF CONTENTS

RTC Transit Fixed Route Bus Highlights.....	Page ii
RTC Transit Fixed Route Bus Summary	Page iv
System Reports.....	Page 1
Economic Data	Page 5
Route Comparison Data.....	Page 7
Monthly Operating Statistics.....	Page 9
RTC RAPID Virginia Line & Route 1	Page 14
RTC RAPID Lincoln Line & Route 11	Page 16
RTC REGIONAL CONNECTOR Carson Line	Page 18
RTC TMCC and UNR Education Pass.....	Page 20

RTC Transit Fixed Route Bus Highlights

November 2024

RTC Transit Fixed Route Bus

- For the month of November, there were 458,480 rides, **up 10.3%** compared with last year (page 1). Weighted average daily ridership was 15,951, **up 11.4%** compared with last year (page 3).
- For the most recent 12 months, there were 5.54 million rides **up 10.5%** compared with the previous 12 months.
- In November, there were 21,565 service hours, **up 3.0%** compared with last year (page 9).
- Productivity was 21.3 rides per service hour, **up 7.1%** compared with last year (page 9).

External Impacts on Ridership

- The average temperature this month was 41.4° F, 2.6° F lower compared with last year.
- The Reno-Sparks area preliminary unemployment rate in October was 4.4%. Unemployment has been gradually trending upward since a low of 2.8% in December 2021.
- Nevada's preliminary unemployment rate for October was 5.7%. The national unemployment rate for October was 4.1%.

Historical Impacts Causing a Downward Trend in Bus Ridership

- According to Bureau of Labor Statistics, 27% of US employees worked remotely at least part of the time in 2023, with several academic surveys suggesting it is closer to 50%*.
- In April 2022, the City of Reno entered an agreement with Bird electric scooters to serve Reno.
- In 2021, Keolis transit workers went on strike August 3 to 13, September 27 to October 20, and November 9 to December 3. Limited service was provided on Routes 1, 7, and 11 and RTC REGIONAL CONNECTOR to Carson City. RTC provided free rides on RIDE, FlexRIDE, taxis, and UberX during the second and third strikes.
- A combination of the pandemic, stimulus checks, easy car financing, and gig jobs requiring cars has likely resulted in a large number of people abandoning transit for car ownership.
- In response to the COVID-19 pandemic, Governor Sisolak ordered the shutdown of casinos and other nonessential businesses in March 2020. In May 2020, Governor Sisolak reopened a number of businesses including bars, salons, gyms, and retail. Casinos were allowed to reopen in June 2020. In May 2021, maximum business capacity increased to 100% in Washoe County.
- There has been an increase in people working primarily from home, approximately eight million in 2018 according to US Census Bureau estimates, taking over transit as the second most common means of getting to work.
- While employment has increased in the region, the makeup of local employment has significantly changed. When Reno was a tourism and gaming town, a large portion of employment was in the low-wage, service industry whereas recently jobs tend to be higher wage and geographically dispersed requiring cars.
- Uber started permanent service in Reno in 2015 and Lyft started shortly after.
- As of 2014, Nevada provides driver's licenses for people who are undocumented immigrants.
- As downtown and midtown areas in-fill and gentrify, this also pushes lower income people to the suburbs where they are much more likely to need cars. This is a nationwide trend.
- The drop in ridership (before COVID) has been a nationwide trend as illustrated by the chart on page 4 which compares RTC transit ridership with US and Canadian bus ridership.
- With the growth of online shopping and food delivery, it is also likely that bus trips used for shopping and dining out has fallen substantially, especially for those with mobility challenges who would prefer online shopping and food delivery. Also, people without cars may decide to purchase a car with the intention of using the car to deliver food and finance the car.

* - <https://www.forbes.com/sites/forbesfinancecouncil/2023/11/06/changing-environment-altering-employer-obligations-for-remote-workers/?sh=7c9e531e2145>



RTC Transit Fixed Route Bus Summary

Route Ridership

- For November, Route 18 (serving Glendale) had the highest productivity with 26.5 rides per service hour.
- Route 5 (serving Sutro – Sun Valley) came in second with 26.4.
- Route 1 (serving S Virginia St between downtown Reno and Meadowood Mall) had the third highest productivity in the system with 24.8 rides per service hour (page 7).
- Route 11 had the highest increase in ridership at 35.7%. In May 2023, Routes 3 and 26 were eliminated with Route 11 absorbing parts of Routes 3 and 26.
- Route 16 (serving Idlewild) ridership had the second highest increase compared with last year by 30.6%.
- Route 21 (Sparks Marina) had the third highest increase in ridership at 21.7%.

RTC RAPID (Virginia & Lincoln Lines Combined)

- This month, there were 117,096 rides on RTC RAPID **up 4.8%** compared with last year. By comparison, system ridership was up 10.3%. The productivity of RTC RAPID at 24.3 rides per service hour was **down 4.5%** compared with last year. By comparison, system productivity was 21.3 rides per service hour, **up 7.1%** compared with last year.
- There were 1.416 million rides over the most recent 12 months, **up 5.3%** compared with the previous 12 months.
- RAPID rides now make up 25.5% of system ridership.
- 45.0% of all system rides were taken on RAPID and Routes 1 and 11.

RTC RAPID Virginia Line

- This month, there were 80,634 rides on the Virginia Line **up 3.7%** compared with last year. Productivity at 29.1 rides per service hour is **down 4.2%** compared with last year.
- Ridership for both the Virginia Line and Route 1 was 111,991 **up 1.9%** compared with last year (page 14). There were 1.39 million rides over the most recent 12 months, **up 3.8%** compared with the previous 12 months.

RTC RAPID Lincoln Line

- This month, there were 36,462 rides on the Lincoln Line **up 7.3%** compared with last year. Productivity at 24.8 rides per service hour is **up 3.9%** compared with last year.
- Ridership for both the Lincoln Line and Route 11 was 94,528 **up 23%** compared with last year (page 16). There were 1.10 million rides for the most recent 12 months, **up 27%** compared with the previous 12 months.

RTC REGIONAL CONNECTOR Carson Line

- There were 1,332 rides this month, **down 2.4%** compared with last November (page 18). At 5.0 rides per service hour, productivity is down 8.0% last year. There were 20,151 rides for the most recent 12 months, **up 3.7 %** compared with the previous 12 months.

RTC TMCC and UNR Education Pass

- There were 13,269 UNR Ed-Pass rides, **up 16%** compared with last year (page 20).
- There were 10,681 TMCC Ed-Pass rides, **up 47%** compared with last year.

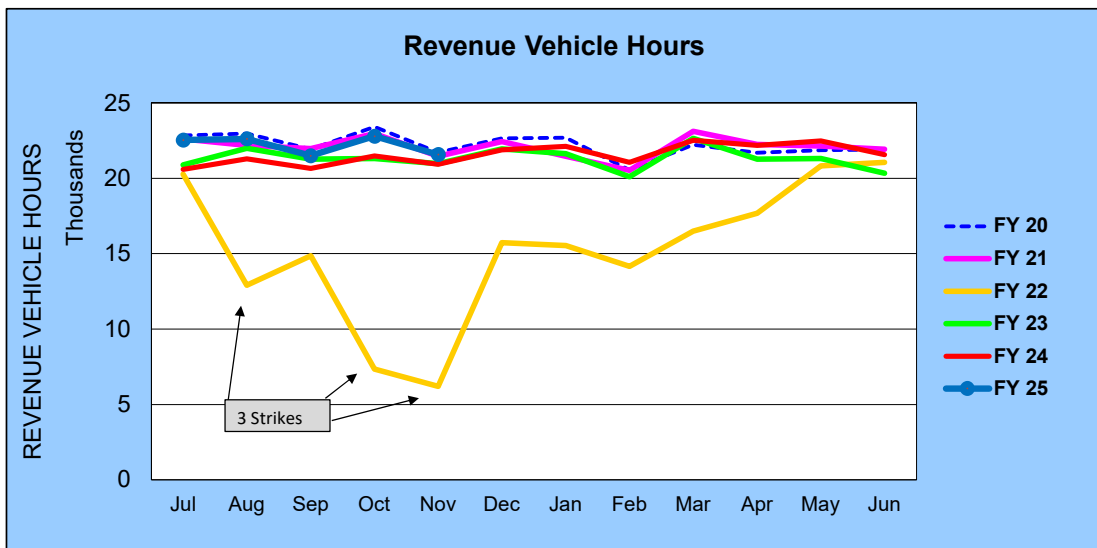
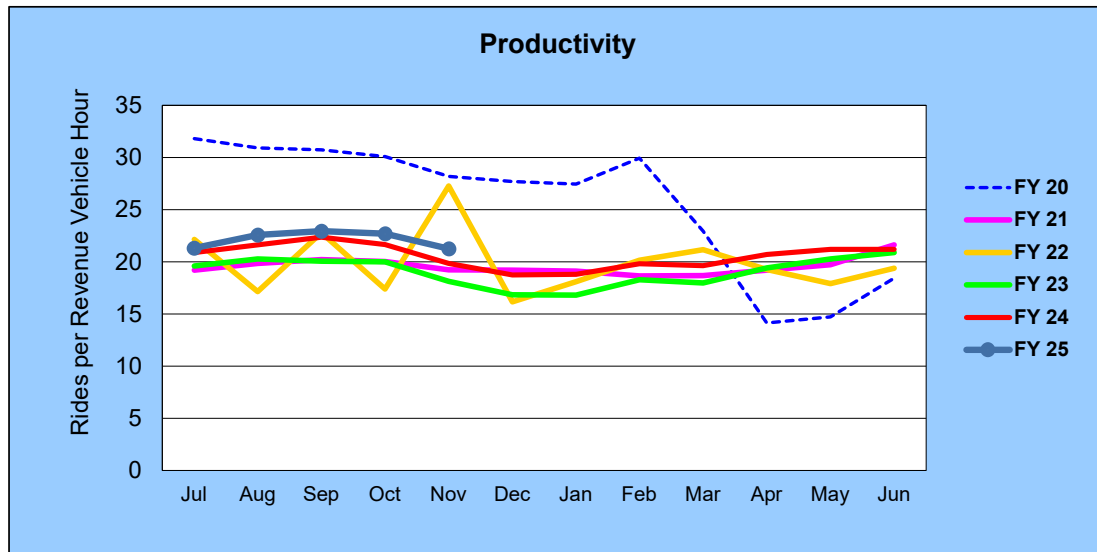
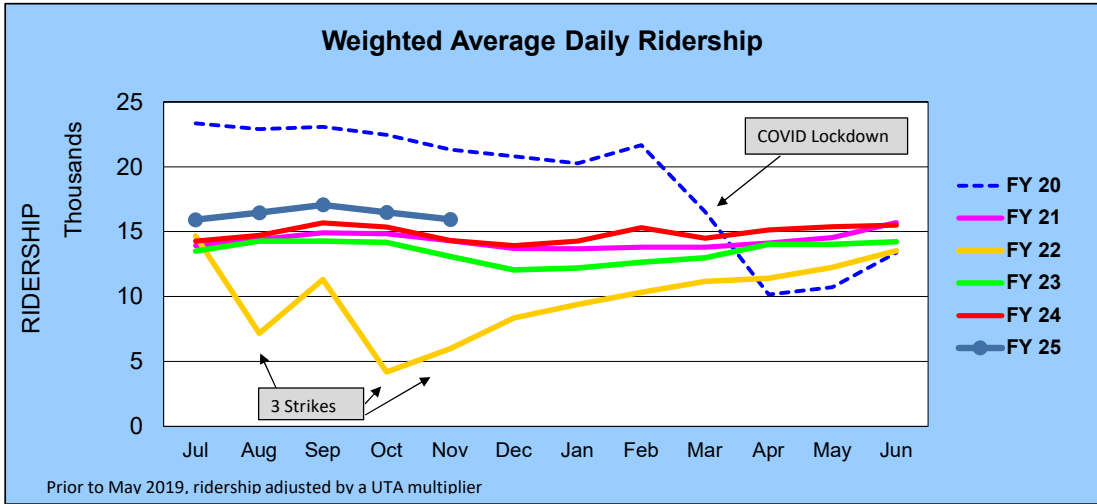
RTC Transit Operating Statistics

RTC Transit Fixed Route Bus						
Rolling 12-Month Ridership Comparison						
Most Recent 12 Months			Percent Change	Previous 12 Months		
Month	Year	Ridership		Month	Year	Ridership
Dec		410,240	11.0%	Dec		369,598
Jan	2024	416,157	14.6%	Jan	2023	363,174
Feb		417,018	13.5%	Feb		367,575
Mar		442,102	8.6%	Mar		407,074
Apr		459,351	11.3%	Apr		412,674
May		476,695	10.3%	May		432,170
Jun		456,808	7.5%	Jun		425,106
Jul		480,395	11.8%	Jul		429,718
Aug		510,365	10.9%	Aug		460,384
Sep		493,117	6.8%	Sep		461,670
Oct		516,977	11.1%	Oct		465,243
Nov		458,480	10.3%	Nov		415,646
TOTAL		5,537,705	10.5%	TOTAL		5,010,032

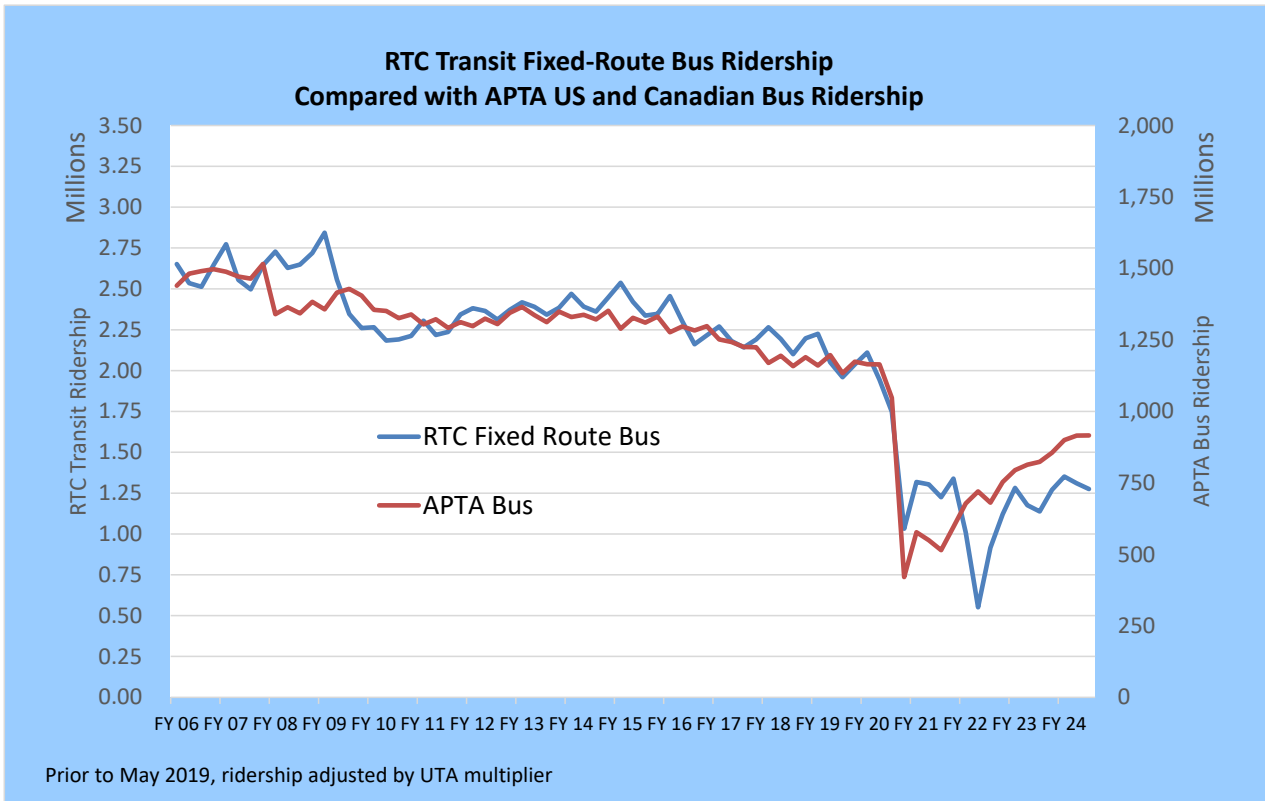
RTC Transit includes RTC RIDE, RTC RAPID, & RTC REGIONAL CONNECTOR

RTC Transit Fixed Route Bus

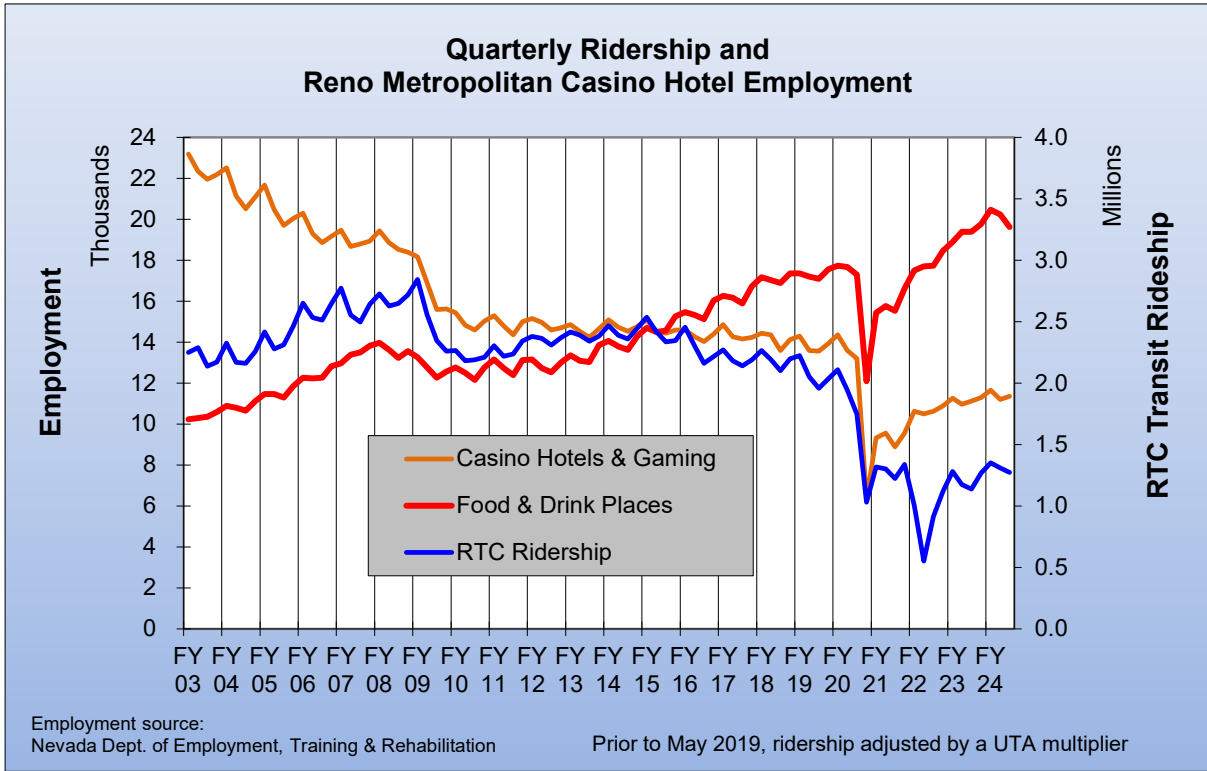
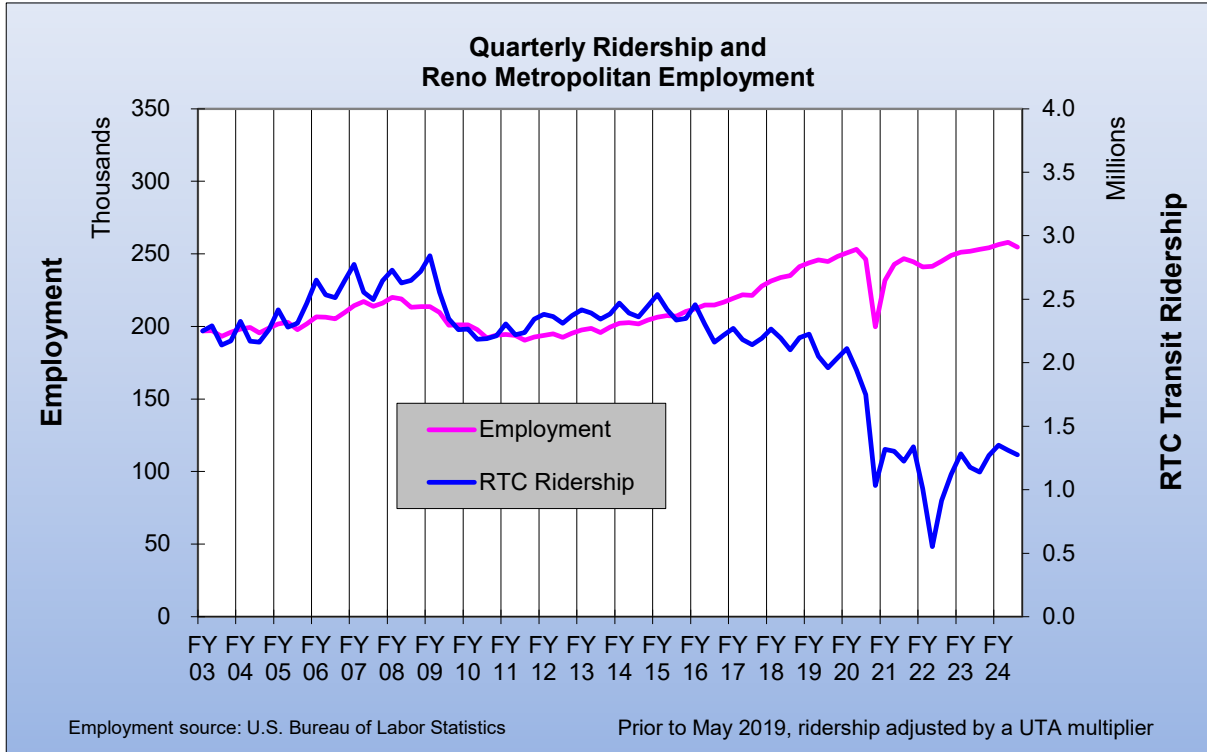
FISCAL YEAR COMPARISONS



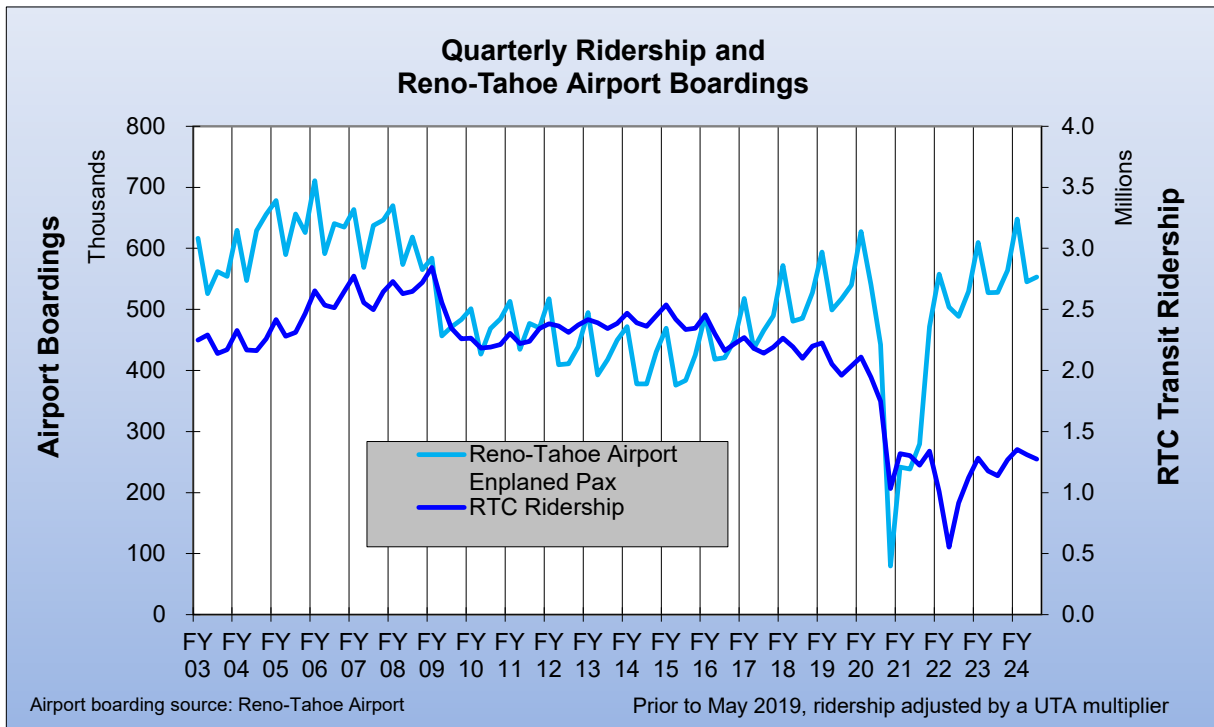
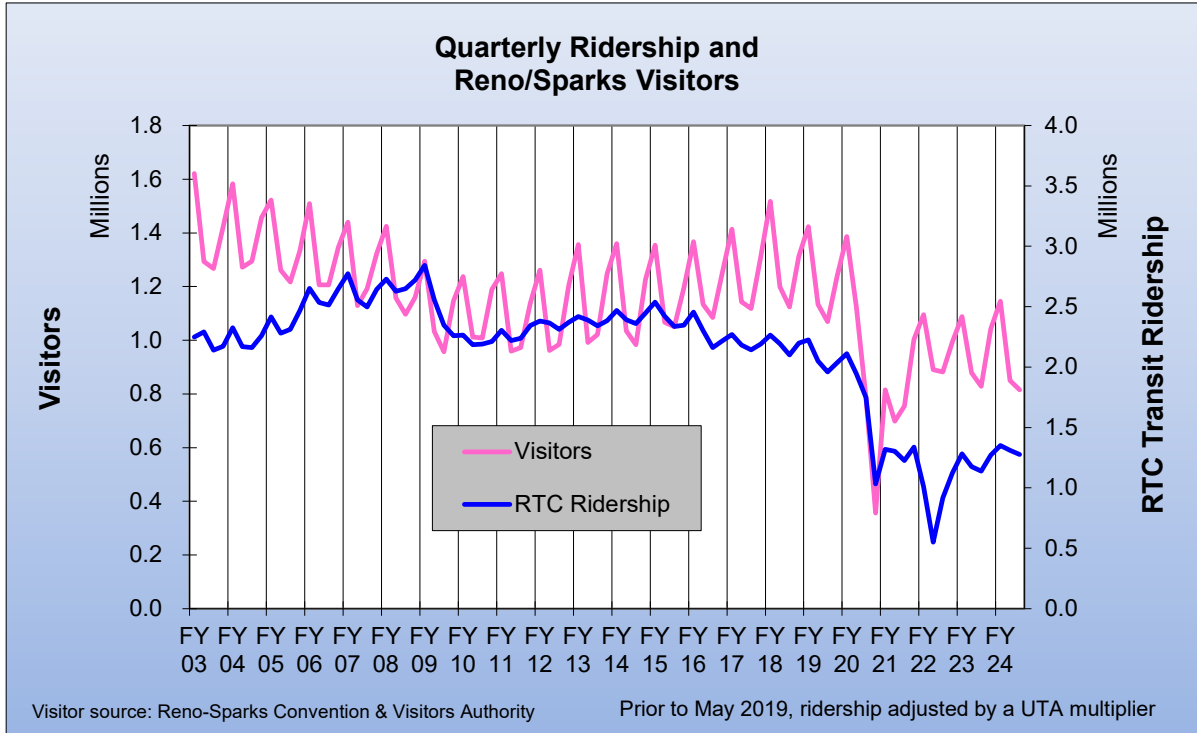
RTC Transit Fixed-Route Bus						
Weighted Average Daily Ridership						
Rolling 12-Month Ridership Comparison						
Most Recent 12 Months			Percent Change	Previous 12 Months		
Month	Year	Ridership		Month	Year	Ridership
Dec		13,931	15.6%	Dec		12,049
Jan	2024	14,262	17.1%	Jan	2023	12,184
Feb		15,294	21.0%	Feb		12,638
March		14,500	11.7%	March		12,981
Apr		15,129	7.9%	Apr		14,016
May		15,373	9.7%	May		14,008
Jun		16,157	13.6%	Jun		14,227
Jul		15,924	11.7%	Jul		14,257
Aug		16,462	12.0%	Aug		14,698
Sep		17,068	8.9%	Sep		15,675
Oct		16,494	7.4%	Oct		15,353
Nov		15,951	11.4%	Nov		14,320



RTC Transit Fixed-Route Bus



RTC Transit Fixed-Route Bus



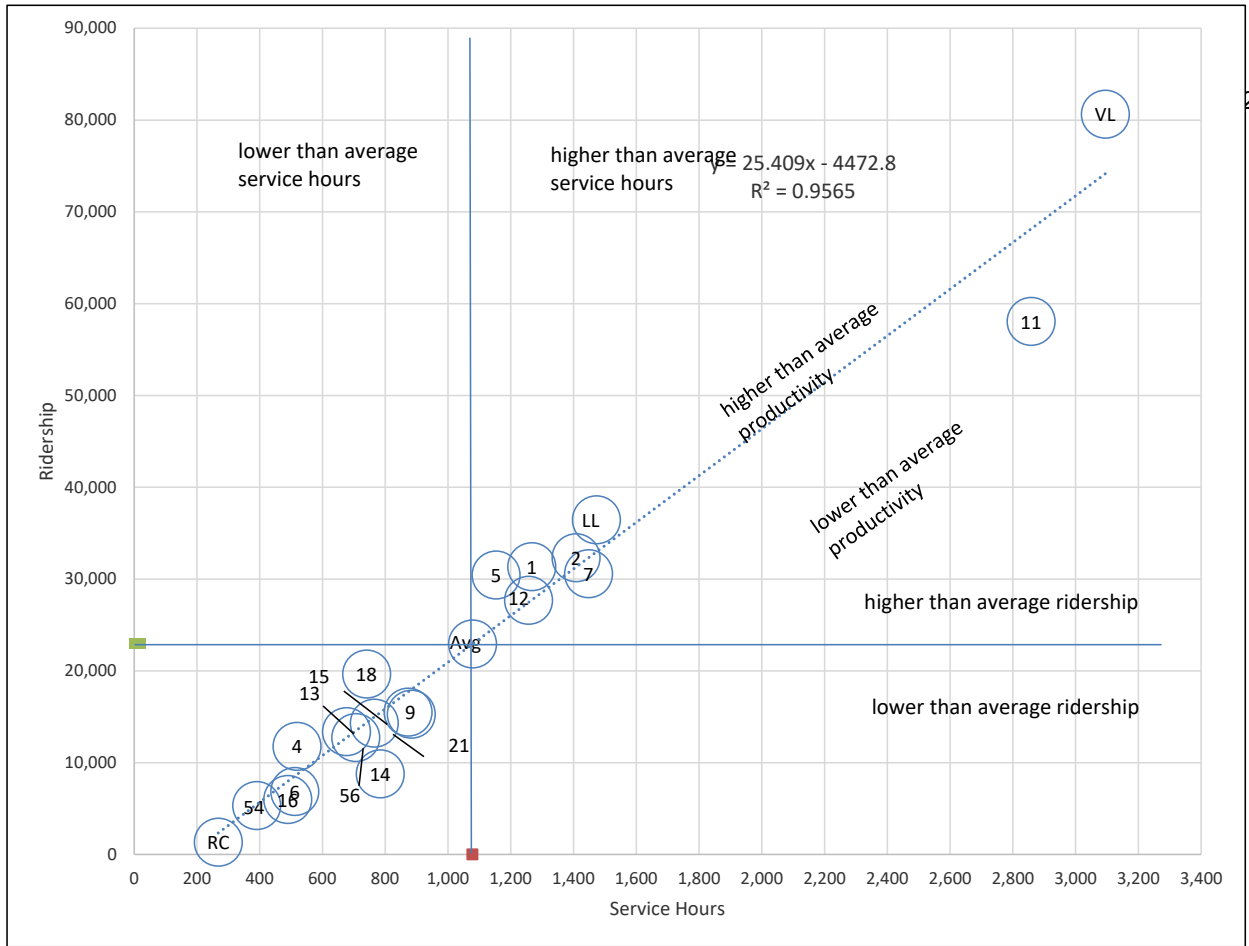
RTC Route Comparison Report

Nov 2024

Route *	Productivity	Route	Svs Hours Change Fr. Last Year	Route	Ridership	Route	Ridership Change From Last Year
18	26.5	21	11.8%	RAP VL	80,634	11	35.7%
5	26.4	7	5.8%	11	58,066	16	30.6%
RAP VL	26.1	RTC RC	5.7%	RAP LL	36,462	21	21.7%
RAP LL	24.8	RAP VL	4.6%	2	32,323	12	18.0%
1	24.8	2	3.7%	1	31,357	5	14.0%
2	23.0	RAP LL	3.3%	7	30,581	9	13.1%
4	22.7	TOTAL	3.0%	5	30,436	56	12.7%
12	22.0	18	2.9%	12	27,685	TOTAL	10.3%
TOTAL	21.3	56	2.8%	18	19,658	2	9.7%
7	21.1	13	2.6%	9	15,507	13	8.5%
11	20.3	9	2.4%	21	15,279	7	8.3%
13	19.8	14	2.0%	15	14,311	RAP LL	7.3%
15	18.7	15	1.9%	13	13,378	15	5.9%
56	18.0	11	1.8%	56	12,734	RAP VL	3.7%
9	17.8	5	1.6%	4	11,777	6	3.6%
21	17.3	12	1.4%	14	8,773	18	3.0%
54	13.7	6	1.0%	6	6,863	4	1.8%
6	13.4	54	1.0%	16	5,987	14	0.1%
16	12.2	16	0.9%	54	5,337	RTC RC	-2.4%
14	11.2	4	0.4%	RTC RC	1,332	1	-2.4%
RTC RC	5.0	1	0.0%	TOTAL	458,480	54	-6.3%

* - RTC RC is RTC REGIONAL CONNECTOR.

RTC Route Comparison Chart Nov 2024



"higher" and "lower" refer to higher or lower than the average of all routes (not the system average)

RTC TRANSIT OPERATING STATISTICS

Nov 2024

Route	Total Ridership	Previous Year	Change	Vehicle Revenue Hours	Previous Year	Change	Rides/VRH	Previous Year	Change
RAPID VL	80,634	77,751	4%	3,095	2,958	5%	26.1	26.3	-1%
RAPID LL	36,462	33,990	7%	1,473	1,426	3%	24.8	23.8	4%
1	31,357	32,142	-2%	1,267	1,267	0%	24.8	25.4	-2%
2	32,323	29,459	10%	1,408	1,358	4%	23.0	21.7	6%
4	11,777	11,568	2%	519	517	0%	22.7	22.4	1%
5	30,436	26,703	14%	1,153	1,135	2%	26.4	23.5	12%
6	6,863	6,622	4%	512	507	1%	13.4	13.1	3%
7	30,581	28,242	8%	1,448	1,368	6%	21.1	20.6	2%
9	15,507	13,711	13%	873	853	2%	17.8	16.1	10%
11	58,066	42,801	36%	2,858	2,806	2%	20.3	15.3	33%
12	27,685	23,455	18%	1,257	1,239	1%	22.0	18.9	16%
13	13,378	12,334	8%	677	659	3%	19.8	18.7	6%
14	8,773	8,762	0%	784	769	2%	11.2	11.4	-2%
15	14,311	13,518	6%	765	751	2%	18.7	18.0	4%
16	5,987	4,584	31%	489	485	1%	12.2	9.5	29%
18	19,658	19,093	3%	741	720	3%	26.5	26.5	0%
21	15,279	12,552	22%	883	790	12%	17.3	15.9	9%
54	5,337	5,694	-6%	390	386	1%	13.7	14.7	-7%
56	12,734	11,300	13%	706	687	3%	18.0	16.5	10%
RC Carson	1,332	1,365	-2%	268	254	6%	5.0	5.4	-8%
Misc. Service		0	N/A		0	N/A		0.0	N/A
Nov 2024	458,480	415,646	10.3%	21,565	20,934	3.0%	21.3	19.9	7.1%
Nov '23	415,646			20,934			19.9		
Perc. Change	10.3%			3.0%			7.1%		

RTC TRANSIT OPERATING STATISTICS

Nov 2024

Route	Vehicle Revenue Miles	Rides/VRM	Est. Gross Operating Cost	Est. Cost Per VRH	Est. Cost Per VRM	Est. Cost Per Ride
RAPID VL	32,028	2.52	\$510,128	\$165	\$15.93	\$6.33
RAPID LL	14,217	2.56	\$242,755	\$165	\$17.07	\$6.66
1	12,519	2.50	\$208,824	\$165	\$16.68	\$6.66
2	14,771	2.19	\$232,136	\$165	\$15.72	\$7.18
4	6,726	1.75	\$85,557	\$165	\$12.72	\$7.26
5	15,443	1.97	\$190,072	\$165	\$12.31	\$6.24
6	4,744	1.45	\$84,403	\$165	\$17.79	\$12.30
7	25,700	1.19	\$238,700	\$165	\$9.29	\$7.81
9	9,858	1.57	\$143,906	\$165	\$14.60	\$9.28
11	30,191	1.92	\$471,130	\$165	\$15.61	\$8.11
12	12,696	2.18	\$207,189	\$165	\$16.32	\$7.48
13	6,228	2.15	\$111,521	\$165	\$17.91	\$8.34
14	7,555	1.16	\$129,283	\$165	\$17.11	\$14.74
15	7,880	1.82	\$126,124	\$165	\$16.01	\$8.81
16	3,380	1.77	\$80,640	\$165	\$23.86	\$13.47
18	8,052	2.44	\$122,113	\$165	\$15.17	\$6.21
21	9,659	1.58	\$145,584	\$165	\$15.07	\$9.53
54	6,269	0.85	\$64,374	\$165	\$10.27	\$12.06
56	10,402	1.22	\$116,346	\$165	\$11.19	\$9.14
RC Carson	8,054	0.17	\$44,180	\$165	\$5.49	\$33.17
Misc. Service						
Nov 2024	246,371	1.86	\$3,554,963	\$165	\$14.43	\$7.75
Nov '23	236,722	1.76	\$3,304,701	\$158	\$13.96	\$7.95
Perc. Change	4.1%	6.0%	7.6%	4.4%	3.4%	-2.5%

RTC Transit Operating Statistics

Dec'23 - Nov '24

Route	Total Ridership	Previous Year	Change	Vehicle Revenue Hours	Previous Year	Change	Rides/VRH	Previous Year	Change
RAPID VL	969,349	907,085	7%	37,821	37,599	1%	25.6	24.1	6%
RAPID LL	447,326	437,849	2%	17,988	17,822	1%	24.9	24.6	1%
1	417,866	429,934	-3%	15,395	16,556	-7%	27.1	26.0	5%
2	389,428	357,928	9%	17,213	17,349	-1%	22.6	20.6	10%
4	150,171	136,535	10%	6,355	6,424	-1%	23.6	21.3	11%
5	353,802	329,143	7%	14,328	14,247	1%	24.7	23.1	7%
6	90,228	75,022	20%	6,266	6,006	4%	14.4	12.5	15%
7	357,565	319,052	12%	17,713	18,691	-5%	20.2	17.1	18%
9	195,152	163,434	19%	10,756	11,577	-7%	18.1	14.1	29%
11	661,055	433,863	52%	35,391	21,084	68%	18.7	20.6	-9%
12	323,022	279,388	16%	15,475	14,111	10%	20.9	19.8	5%
13	168,031	140,466	20%	8,327	8,116	3%	20.2	17.3	17%
14	110,299	94,720	16%	9,663	8,950	8%	11.4	10.6	8%
15	176,985	149,012	19%	9,438	9,282	2%	18.8	16.1	17%
16	66,289	50,124	32%	6,007	5,340	12%	11.0	9.4	18%
18	241,796	252,295	-4%	9,192	9,548	-4%	26.3	26.4	0%
21	172,210	149,662	15%	10,502	8,923	18%	16.4	16.8	-2%
54	68,602	65,892	4%	4,784	5,265	-9%	14.3	12.5	15%
56	158,378	126,412	25%	8,748	7,553	16%	18.1	16.7	8%
RC Carson	20,151	19,434	4%	3,389	3,332	2%	5.9	5.8	2%
Misc. Service									
Current 12 Months	5,537,705	5,010,032	10.5%	264,750	254,143	4.2%	20.9	19.7	6.1%
Previous 12 Months	5,010,032			254,143			19.7		
Perc. Change	10.5%			4.2%			6.1%		

RTC Transit Operating Statistics

Dec'23 - Nov '24

Route	Vehicle Revenue Miles (thousand)	Rides/VRM	Est. Gross Operating Cost (thousand)	Est. Cost Per VRH	Est. Cost Per VRM	Est. Cost Per Ride
RAPID VL	374.9	2.59	\$6,082	\$161	\$16.22	\$6.27
RAPID LL	173.3	2.58	\$2,892	\$161	\$16.69	\$6.47
1	152.3	2.74	\$2,475	\$161	\$16.26	\$5.92
2	180.5	2.16	\$2,768	\$161	\$15.34	\$7.11
4	82.4	1.82	\$1,022	\$161	\$12.41	\$6.80
5	192.2	1.84	\$2,304	\$161	\$11.99	\$6.51
6	58.1	1.55	\$1,007	\$161	\$17.35	\$11.17
7	313.6	1.14	\$2,848	\$161	\$9.08	\$7.97
9	121.0	1.61	\$1,730	\$161	\$14.29	\$8.86
11	365.2	1.81	\$5,688	\$161	\$15.57	\$8.60
12	156.5	2.06	\$2,488	\$161	\$15.91	\$7.70
13	76.2	2.20	\$1,339	\$161	\$17.57	\$7.97
14	93.1	1.18	\$1,554	\$161	\$16.68	\$14.09
15	97.1	1.82	\$1,518	\$161	\$15.62	\$8.57
16	41.7	1.59	\$966	\$161	\$23.16	\$14.57
18	99.9	2.42	\$1,478	\$161	\$14.80	\$6.11
21	114.9	1.50	\$1,689	\$161	\$14.70	\$9.81
54	76.8	0.89	\$769	\$161	\$10.02	\$11.21
56	128.9	1.23	\$1,407	\$161	\$10.91	\$8.88
RC Carson	101.9	0.20	\$545	\$161	\$5.35	\$27.05
Misc. Service						
Current 12 Months	3,000.5	1.85	\$42,570	\$161	\$14.19	\$7.69
Previous 12 Months	2,836.6	1.77	\$38,578	\$152	\$13.60	\$7.70
Perc. Change	5.8%	4.5%	10.3%	5.9%	4.3%	-0.2%

November

Dec 2023 - Nov 2024

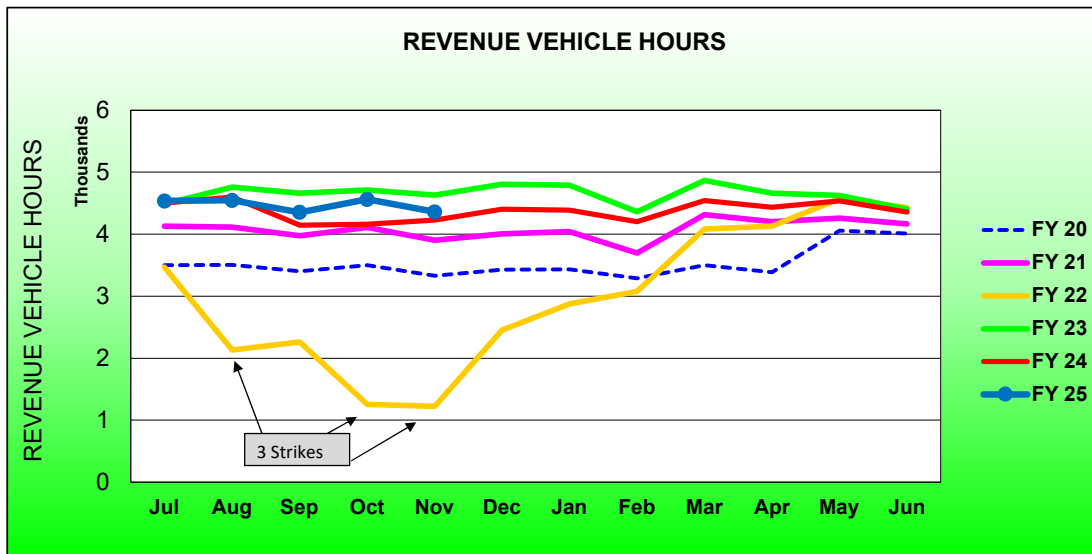
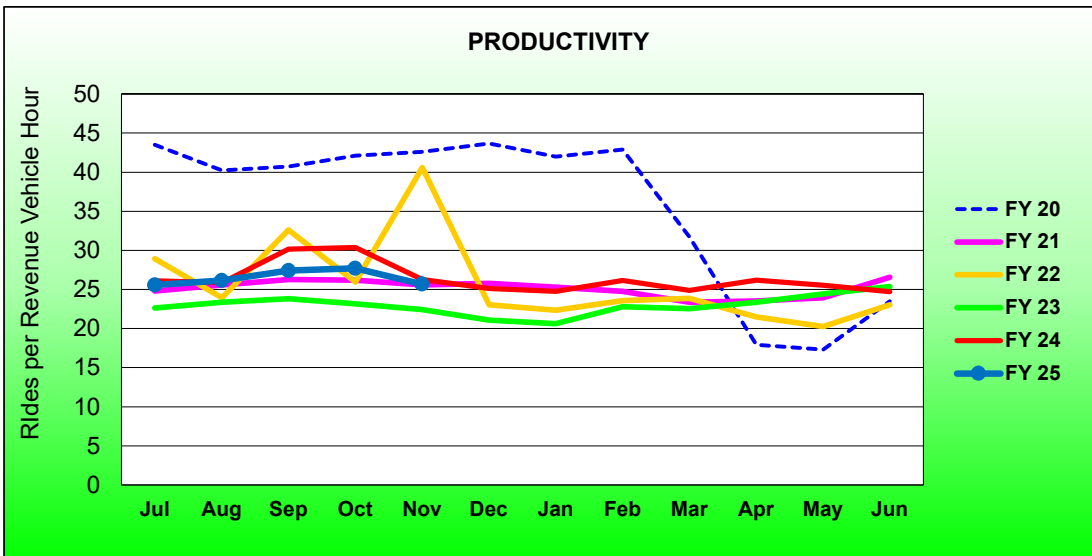
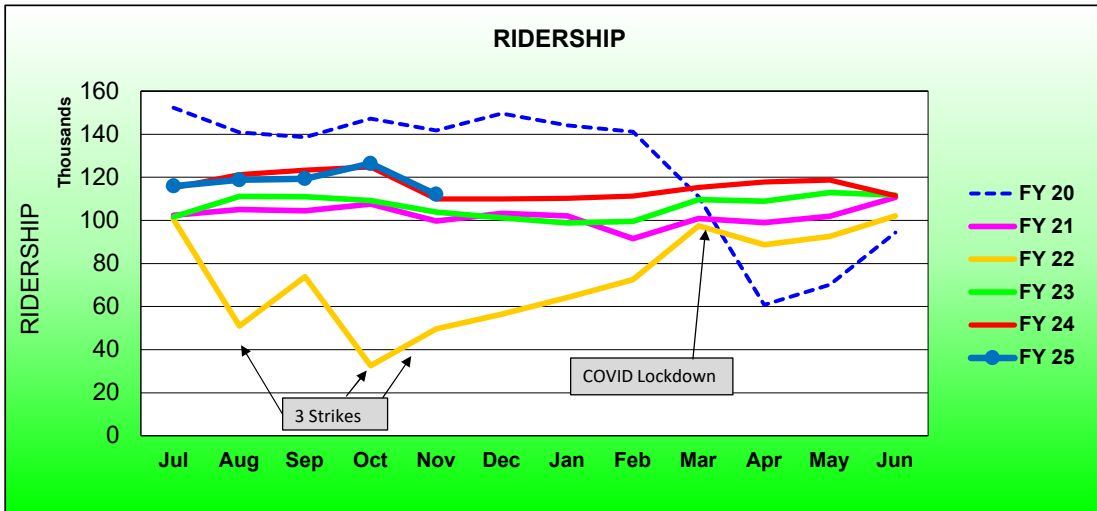
	2024	2023	Percent Change	Current 12 Months	Previous 12 Month	Percent Change
Single Ride Cash						
Full Fare	2,826	4,398	-36%	43,227	61,996	-30%
Reduced*	4,816	6,647	-28%	64,414	88,763	-27%
RTC ACCESS ID	114	356	-68%	3,460	4,176	-17%
Total	7,756	11,401	-32%	111,101	154,935	-28%
Day Pass Cash						
Full Fare	47,937	50,683	-5.4%	611,605	704,119	-13%
Reduced*	58,048	65,036	-10.7%	744,860	834,988	-10.8%
Total	105,985	115,719	-8.4%	1,356,465	1,539,107	-12%
Pre-Purchase Period Pass						
Full Fare	110,973	104,203	6.5%	1,286,021	1,242,627	3%
Reduced*	156,788	129,817	21%	1,675,876	1,493,469	12%
Total	267,761	234,020	14%	2,961,897	2,736,096	8%
Transfers	112	219	-49%	3,155	2,812	12%
Flow Through	7,500	5,174	45%	58,428	62,961	-7%
Free Rides	42,808	27,858	54%	322,268	303,025	6%
U/Ed-Pass Free Rides	23,950	18,658	28%	219,476	174,281	26%
Stored Ride Pass	2,609	2,597	0%	35,717	36,815	-3%
Full Fare	184,055	174,939	5.2%	2,122,832	2,190,492	-3.1%
Reduced*	274,371	240,586	14%	2,954,719	2,818,127	5%
Total Ridership	458,480	415,646	10.3%	5,537,705	5,010,032	10.5%
Previous 12 Months	415,646			5,010,032		
Change	10.3%			10.5%		
Vehicle Revenue Hours	21,565	20,934	3.0%	264,750	254,143	4.2%
Previous 12 Months	20,934			254,143		
Change	3.0%			4.2%		
Rides / VRH	21.3	19.9	7.1%	20.9	19.7	6.1%
Previous 12 Months	19.9			19.7		
Change	7.1%			6.1%		
Vehicle Revenue Miles	246,371	236,722	4.1%	3,000,534	2,836,553	5.8%
Rides / VRM	1.86	1.76	6.0%	1.85	1.77	4.5%
Est. Gross Operating Cost	\$3,554,963	\$3,304,701	7.6%	\$42,569,594	\$38,577,945	10.3%
Est. Cost Per VRH	\$165	\$158	4.4%	\$160.79	\$151.80	5.9%
Est. Cost Per VRM	\$14.43	\$13.96	3.4%	\$14.19	\$13.60	4.3%
Est. Cost Per Ride	\$7.75	\$7.95	-2.5%	\$7.69	\$7.70	-0.2%

* - Reduced fare includes Youth, Senior, Disabled, and US Veterans

RTC RAPID Virginia Line and Route 1						
ROLLING 12-MONTH COMPARISON						
Most Recent 12 Months			Percent Change	Previous 12 Months		
Month	Year	Ridership		Month	Year	Ridership
Dec		109,966	8.6%	Dec		101,252
Jan	2024	110,229	11.6%	Jan	2023	98,740
Feb		111,239	11.8%	Feb		99,491
March		115,379	5.2%	March		109,639
Apr		117,811	8.1%	Apr		108,968
May		118,653	5.1%	May		112,931
Jun		111,479	-0.2%	Jun		111,746
Jul		115,958	0.7%	Jul		115,149
Aug		118,809	-2.0%	Aug		121,197
Sep		119,329	-3.2%	Sep		123,298
Oct		126,372	1.3%	Oct		124,715
Nov		111,991	1.9%	Nov		109,893
TOTAL		1,387,215	3.8%	TOTAL		1,337,019

* - Strikes occurred Aug 3-13, Sep 27-Oct 20, Nov 9-Dec 3, 2021

RTC RAPID Virginia Line and Route 1 Fiscal Year Comparisons



RTC RAPID Lincoln Line and Route 11						
Rolling 12-Month Comparison						
Most Recent 12 Months			Percent Change	Previous 12 Months		
Month	Year	Ridership		Month	Year	Ridership
Dec		77,855	30%	Dec		59,985
Jan	2024	82,348	37%	Jan	2023	60,272
Feb		81,020	43%	Feb		56,669
Mar		86,512	34%	Mar		64,370
Apr		90,650	43%	Apr		63,439
May		94,524	27%	May		74,197
Jun		91,699	20%	Jun		76,479
Jul		97,939	21%	Jul		81,268
Aug		105,967	24%	Aug		85,588
Sep		100,874	17%	Sep		86,016
Oct		104,465	21%	Oct		86,638
Nov		94,528	23%	Nov		76,791
TOTAL		1,108,381	27%	TOTAL		871,712

RTC Transit Operating Statistics

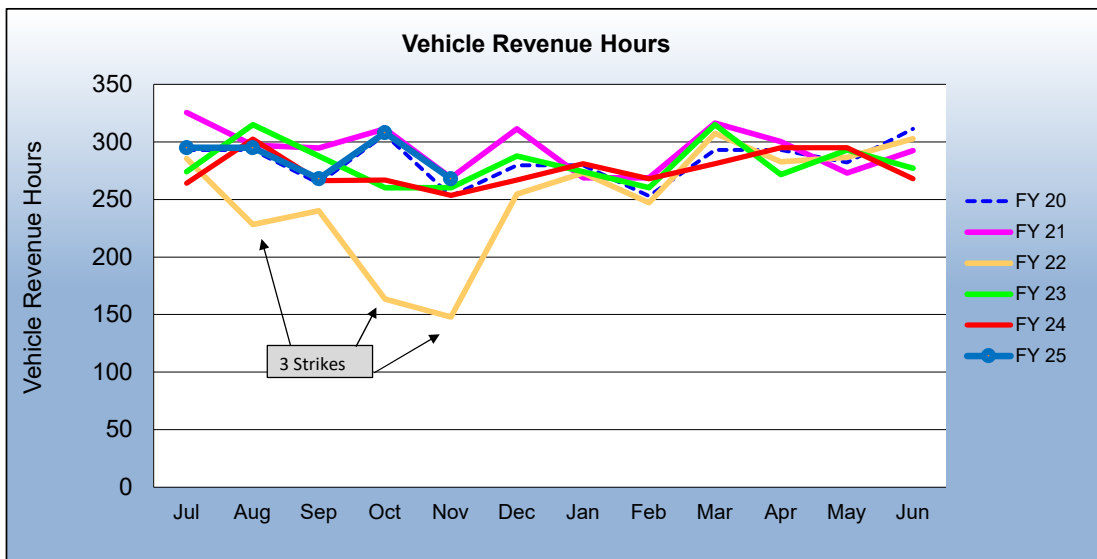
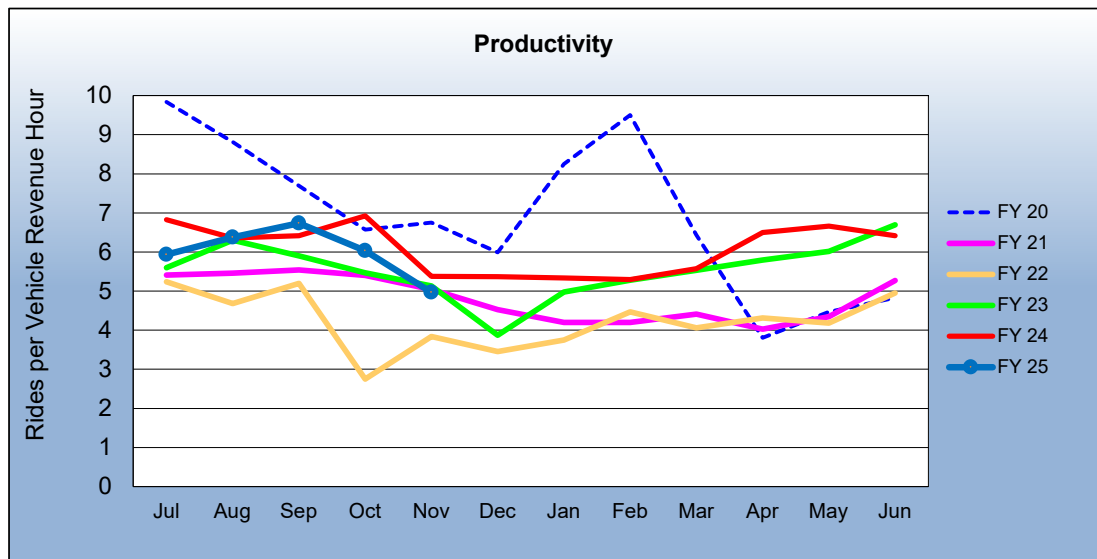
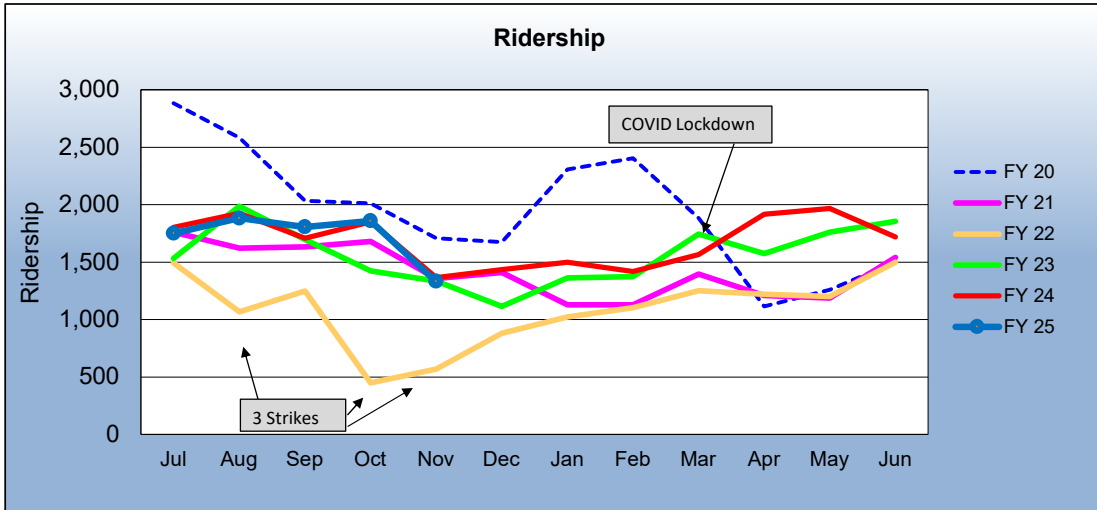
RTC RAPID Virginia & Lincoln Lines						
ROLLING 12-MONTH COMPARISON						
Most Recent 12 Months			Percent Change	Previous 12 Months		
Month	Year	Ridership		Month	Year	Ridership
Dec		112,141	18%	Dec		94,884
Jan	2024	111,384	17%	Jan	2023	94,823
Feb		111,895	17%	Feb		95,606
Mar		116,399	10%	Mar		105,699
Apr		120,299	14%	Apr		105,548
May		122,131	5.1%	May		116,256
Jun		113,689	-2.7%	Jun		116,866
Jul		117,265	-2.7%	Jul		120,564
Aug		121,538	-5.3%	Aug		128,312
Sep		122,911	-3.4%	Sep		127,255
Oct		129,927	2.0%	Oct		127,380
Nov		117,096	4.8%	Nov		111,741
TOTAL		1,416,675	5.3%	TOTAL		1,344,934

* - Strikes occurred Aug 3-13, Sep 27-Oct 20, Nov 9-Dec 3, 2021

RTC REGIONAL CONNECTOR - Carson Line						
Rolling 12 Month Comparison						
Most Recent 12 Months			Percent Change	Previous 12 Months		
Month	Year	Ridership		Month	Year	Ridership
Dec		1,434	28.8%	Dec		1,113
Jan	2024	1,500	10.0%	Jan	2023	1,364
Feb		1,419	3.3%	Feb		1,374
Mar		1,567	-10.1%	Mar		1,743
Apr		1,916	21.7%	Apr		1,575
May		1,965	11.5%	May		1,762
Jun		1,720	-7.3%	Jun		1,855
Jul		1,751	-2.8%	Jul		1,802
Aug		1,882	-2.2%	Aug		1,924
Sep		1,806	5.7%	Sep		1,708
Oct		1,859	0.5%	Oct		1,849
Nov		1,332	-2.4%	Nov		1,365
TOTAL		20,151	3.7%	TOTAL		19,434

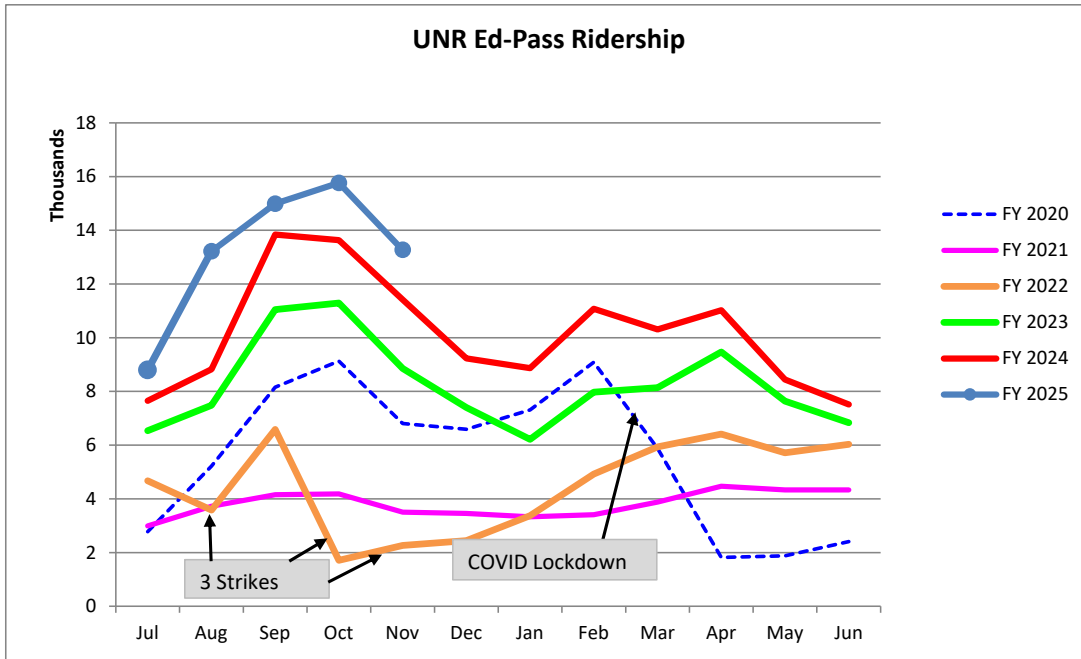
* - Strikes occurred Aug 3-13, Sep 27-Oct 20, Nov 9-Dec 3, 2021

RTC REGIONAL CONNECTOR Carson Line Fiscal Year Comparisons



**RTC Transit Fixed Route Bus Ridership Report
University of Nevada, Reno Ed-Pass Program
FY 2024**

Category	Jul	Aug	Sep	Oct	Nov	Dec	Jan	Feb	Mar	Apr	May	Jun	FYTD
FY 2020	2,779	5,218	8,159	9,127	6,808	6,592	7,312	9,084	5,873	1,818	1,877	2,410	67,057
FY 2021	2,991	3,723	4,156	4,185	3,502	3,455	3,329	3,409	3,881	4,471	4,333	4,330	45,765
FY 2022	4,670	3,581	6,584	1,710	2,264	2,447	3,376	4,924	5,936	6,410	5,716	6,033	53,651
FY 2023	6,539	7,482	11,046	11,291	8,857	7,399	6,215	7,973	8,138	9,470	7,640	6,833	98,883
FY 2024	7,650	8,824	13,841	13,631	11,414	9,231	8,864	11,077	10,309	11,024	8,445	7,516	121,826
Percent Change	15%	50%	8.3%	16%	16%								
FY 2025	8,797	13,215	14,988	15,763	13,269								

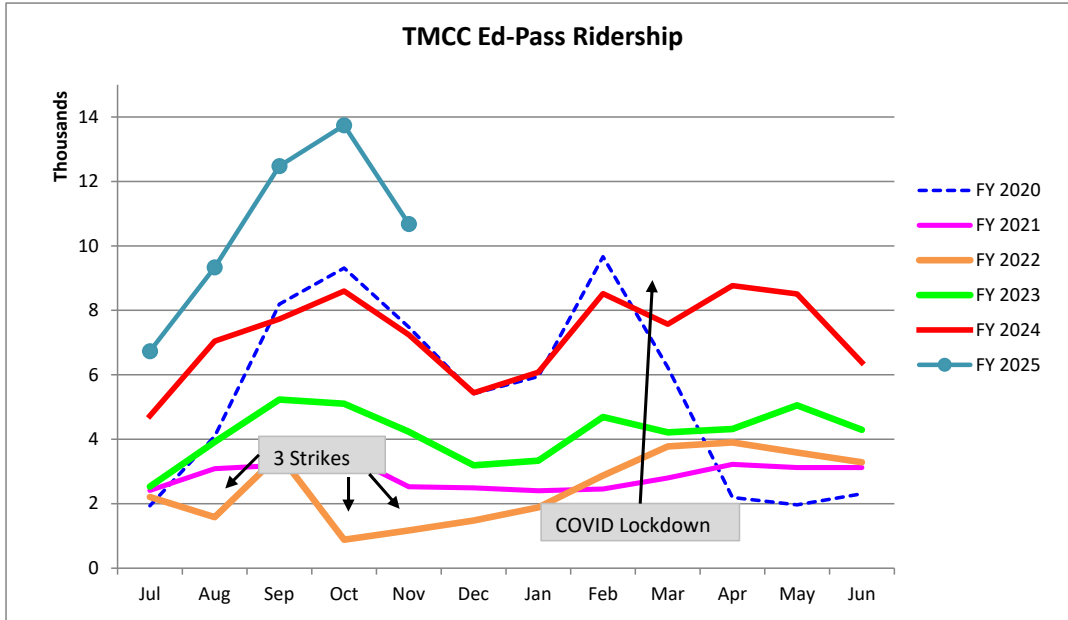


Fiscal Year	Rides
FY 2003	51,228
FY 2004	55,114
FY 2005	69,685
FY 2006	88,070
FY 2007	85,295
FY 2008	86,461
FY 2009	88,385
FY 2010	79,518
FY 2011	75,925
FY 2012	75,300
FY 2013	50,438
FY 2014	40,854
FY 2015	41,778
FY 2016	50,022
FY 2017	40,581
FY 2018	34,154
FY 2019	30,251

U-Pass:	
FY 2020	67,057
FY 2021	45,765
FY 2022	53,651
FY 2023	98,883
FY 2024	121,826

**RTC Transit Fixed Route Bus Ridership Report
Truckee Meadows Community Ed-Pass Program
FY 2024**

Category	Jul	Aug	Sep	Oct	Nov	Dec	Jan	Feb	Mar	Apr	May	Jun	FYTD
FY 2020	1,933	4,086	8,193	9,311	7,479	5,413	5,945	9,668	6,227	2,193	1,968	2,310	64,726
FY 2021	2,414	3,090	3,194	3,535	2,527	2,493	2,402	2,459	2,800	3,225	3,126	3,124	34,389
FY 2022	2,208	1,584	3,516	883	1,170	1,480	1,886	2,875	3,773	3,899	3,585	3,287	30,146
FY 2023	2,533	3,913	5,233	5,103	4,231	3,195	3,335	4,690	4,213	4,314	5,051	4,292	50,103
FY 2024	4,725	7,045	7,727	8,596	7,244	5,440	6,081	8,520	7,569	8,768	8,510	6,384	86,609
Percent Change	43%	32%	61%	60%	47%								
FY 2025	6,734	9,334	12,476	13,741	10,681								



Fiscal Year	Rides
FY 2013	90,583
FY 2014	113,700
FY 2015	94,112
FY 2016	83,375
FY 2017	66,110
FY 2018	53,027
FY 2019	37,191

Ed-Pass:	Rides
FY 2020	64,726
FY 2021	34,389
FY 2022	30,146
FY 2023	50,103
FY 2024	86,609