

**REGIONAL TRANSPORTATION COMMISSION (RTC)  
REGIONAL ROAD IMPACT FEE (RRIF)  
TECHNICAL ADVISORY COMMITTEE (TAC)  
MEETING MINUTES  
THURSDAY, NOVEMBER 21, 2024**

**MEMBERS PRESENT**

Dale Keller, Regional Transportation Commission  
Graham Dollarhide, Regional Transportation Commission  
Michon Reede, Washoe County  
Mitchell Fink, Washoe County  
Rob Pierce, Washoe County  
Hans Meyer, City of Reno  
Manny Becerra, City of Reno  
Mike Mischel, City of Reno  
Amber Sosa, City of Sparks  
Shelley Read, City of Sparks  
Sienna Reid, City of Sparks  
John Krmpotic, Private Sector  
Kraig Knudsen, Private Sector  
Randy Walter, Private Sector

**MEMBERS ABSENT**

Alex Velto, City of Reno    Ted Erkan, Private Sector

**RTC STAFF**

Christian Schonlau    Jeff Wilbrecht    Jeremy Lattin  
Vanessa Lacer    Yeni Russo

**GUESTS**

Angela Fuss, City of Reno    Dane Hillyard, Private Sector    Khalil Wilson, City of Reno  
Loren Chilson, Private Sector

### **Item 1: Roll Call/Call to Order**

The meeting was conducted as a Zoom meeting and was called to order at 8:35 a.m. Roll call was taken to ensure there was a quorum.

### **Item 2: Verbal Instructions Required by Assembly Bill 219 (2023)**

The verbal instructions were read by the committee Chair, Jeff Wilbrecht.

### **Item 3: Public Comment**

There were no public comments received.

### **Item 4.1: Approval of the April 25, 2024, Meeting Minutes**

The April 25, 2024, Meeting Minutes were approved as presented.

### **Item 5.1: RTC Staff Presentation on the Regional Transportation Plan (RTP) Update**

Vanessa Lacer, RTC Planning Director, provided a presentation and discussed the 2050 RTP (see Item 5.1, Attachment A). Vanessa provided an overview of the RTP development process, highlighting the development timeline, work completed, and upcoming tasks. Some key steps in the development process included a call for projects from jurisdictions, project scope development, and project cost estimation for each of the projects. Once the draft project list is developed the process moves to the project prioritization and project scoring phase. The process uses a scoring tool based on the nine Plan goals and the objectives for each of those goals to score projects per project type. Vanessa mentioned that the final step is coordination with the Nevada Department of Transportation (NDOT) for timing on state projects, RTC is required to include NDOT projects in the RTP project list. Vanessa shared the draft project list, which includes project ranking, cost estimate, and funding bands. She encouraged feedback and questions on the draft project list.

There was discussion on the Red Rock Road interchange improvement project. Rob Pierce, with Washoe County, mentioned the need for the project to be constructed before the listed timeline on the draft RTP project list. Dale Keller, RTC Engineering Director, mentioned there has been discussion with City of Reno and NDOT of a phase approach for building some needed interchange

improvements at Red Rock Road, which could be privately funded due to developer activity on the south side of the project location.

**Item 5.2: RTC Staff Presentation on the Status and Update to the 7<sup>th</sup> Edition RRIF CIP Project List**

Jeff Wilbrecht, RTC Engineering Manager, provided a presentation and discussed the status and update to the 7<sup>th</sup> Edition RRIF Capital Improvement Plan (CIP) Project List (see Item 5.2, Attachment A). Jeff discussed the status of various projects in the North and South Benefit Districts of the CIP, and outlined the process of developing the impact fees, which involves planning efforts by RTC and regional planning efforts by Truckee Meadows Regional Planning Agency (TMRPA). He also explained the RRIF network and the eligibility criteria for RRIF eligible improvements and provided an example of a RRIF offset agreement from Wingfield Hills Road.

Jeff discussed the next steps and schedule of the ongoing update from the 7<sup>th</sup> Edition RRIF CIP to the 8<sup>th</sup> Edition, which is currently in the RTP planning stage. RTC Planning staff are working to incorporate the comments received from the Agency Working Group (AWG) into the RTP project list. RTC RRIF staff will incorporate private projects and corridors currently planned, and comments from RRIF TAC. Jeff plans to present the developed draft RRIF CIP list to the committee in January 2025. Once the draft list is finalized, he will start developing fee calculations and updating the General Administrative Manual (GAM) and CIP manuals with the goal of finalizing the updates in the summer of 2025.

Kraig Knudsen and Loren Chilson, with the Private Sector, discussed their proposal for adding a privately funded project to the RRIF CIP list located in South Reno on South Virginia Street at South Hills Drive.

John Krmptic, with the Private Sector, stated his support to include the South Virginia Street at South Hills Drive project in the RRIF CIP.

**Item 6: Member Announcements and Updates**

There were no member items.

**Item 7: Public Comment**

There were no public comments received.

**Item 8: Adjournment**

The meeting was adjourned at 9:14 a.m.

Respectfully Submitted,

Yeni Russo

Approved



**REGIONAL TRANSPORTATION COMMISSION**

*Metropolitan Planning • Public Transportation & Operations • Engineering & Construction*

Metropolitan Planning Organization of Washoe County, Nevada

**2050 Regional Transportation Plan (RTP)  
Plan Development Update  
RRIF TAC - November 21, 2024**



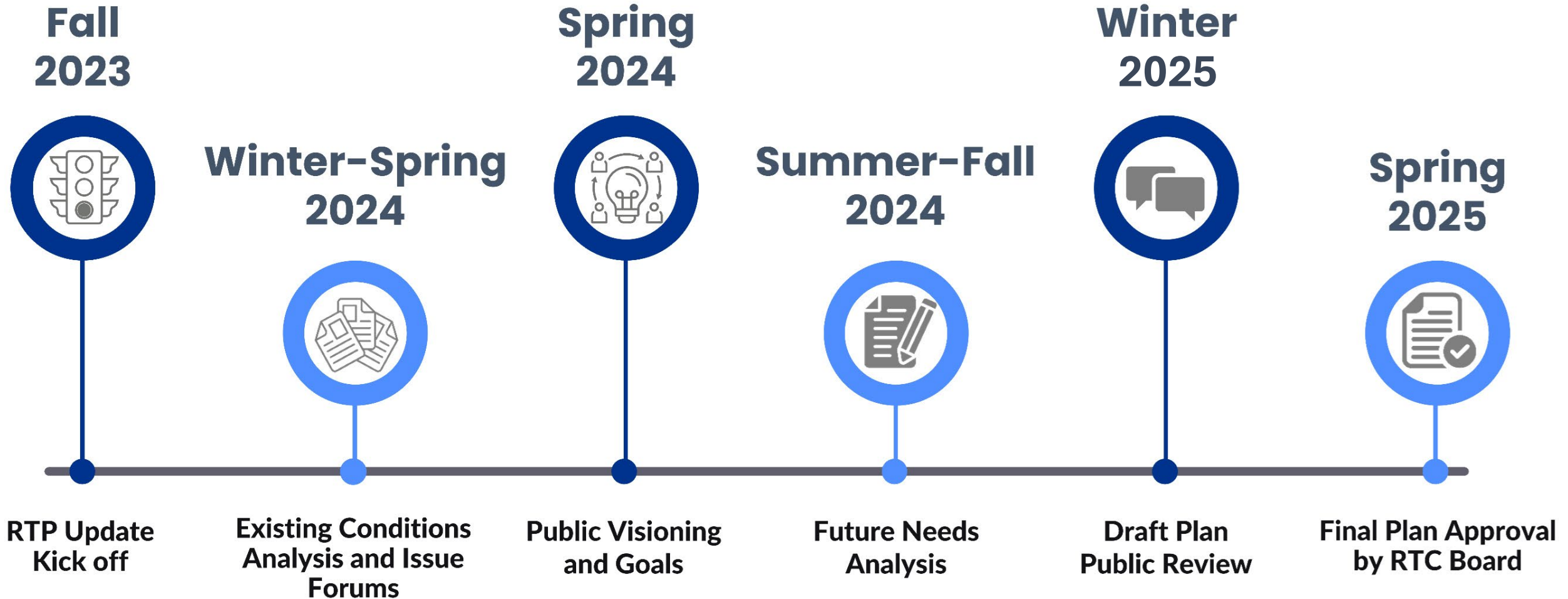


## Presentation Overview

- RTP Development Timeline
- RTP Development Tasks Completed and Upcoming
- Project Development
- Project Prioritization
- Next Steps



# RTP Development Timeline





# RTP Development Timeline - Tasks Completed and Upcoming

## Tasks Completed

- ✓ Public Engagement Round 1
- ✓ 6 Agency Working Group Meetings
- ✓ Plan Visioning and Goal Setting
- ✓ Call for Projects
- ✓ Project List Development
- ✓ Project Scope Development
- ✓ Project Cost Estimates
- ✓ Project Scoring Tool Development
- ✓ Project Scoring
- ✓ Draft Chapter Development
- ✓ Draft Fiscal Analysis

## Tasks Upcoming

- Finalize Fiscal Analysis
- Finalize Draft Chapters
- Travel Demand Modeling
- Air Quality Analysis and Conformity Determination
- Public Engagement Round 2
- Draft Plan Presentations
- Plan Adoption





## Project Development

### Project Development Process

1

Current RTP  
Projects

2

Call for Projects

3

RTP Draft  
Project List

4

Develop Project  
Scope and  
Estimated Cost

### What Types of Projects Were Identified?

Freeway, Capacity, Spot/Intersection, Multimodal

### Key Steps:

- ✓ Call for Projects from Jurisdictions
- ✓ Develop Project Scope
- ✓ Develop Estimated Project Cost



## Project Prioritization- Project Scores

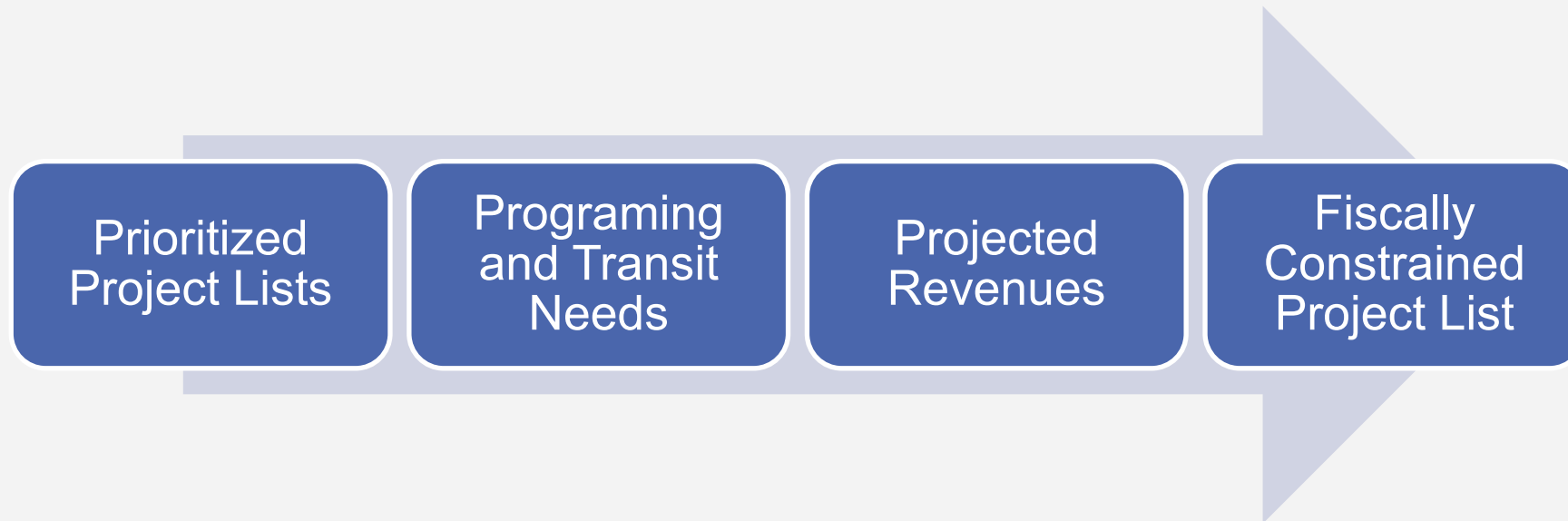


### Key Steps:

- ✓ Utilize Plan Goals to Develop Project Scoring Tool
- ✓ Score Projects Per Project Type
- ✓ Prioritized Project Lists



## Project Prioritization- Fiscal Analysis



### Key Steps:

- ✓ Develop Financial Projections through 2050
- ✓ Apply Project Implementation Criterion
- ✓ Coordinate with NDOT for Timing on State Projects



## Next Steps

1

### **Draft Plan Available- Public Engagement Round 2**

January 03, 2025, to February 1, 2025

2

### **Draft Plan Presentations**

- January 2025

3

### **Draft Plan Review by AWG, TAC and CMAC**

- January 2025

4

### **Plan Adoption**

- February/March 2025



THANK YOU

**Vanessa J. Lacer, AICP**  
**Planning Director**

Regional Transportation Commission of  
Washoe County

[vlacer@rtcwashoe.com](mailto:vlacer@rtcwashoe.com)

**Building A Better Community Through Quality Transportation**  
[rtcwashoe.com](http://rtcwashoe.com)





**REGIONAL TRANSPORTATION COMMISSION**

*Metropolitan Planning • Public Transportation & Operations • Engineering & Construction*

Metropolitan Planning Organization of Washoe County, Nevada

**8<sup>th</sup> Edition RRIF CIP Update**

November 21, 2024





# RRIF Capital Improvement Plan (CIP)

## ITEM 5.2 ATTACHMENT A

Service Area	Roadway	Limits	Description	Current Status
N	Buck Dr	Lemmon Dr to N Hills Blvd	Widen 2 to 4 lanes	Underway
N	Dolores Drive (Private)	Existing Dolores west to Lazy 5 Pkwy	New 2 lane road	
N	Highland Ranch Pkwy (Private)	Five Ridges to Pyramid Hwy	Widen 2 to 4 lanes	RRIF Agreement Underway
N	Kiley Pkwy (Private)	Wingfield Hills Rd to Henry Orr Pkwy	New 2 lane road	Complete
N	Lazy 5 Pkwy (Private)	W Sun Valley Arterial to Pyramid Hwy	New 4 lane road west of Pyramid Hwy transitioning to 2 lanes at future development entrance	
N	Lemmon Drive	US 395 to Military Rd	Widen 4 to 6 lanes - US 395 to Military Rd	Complete
N	Lemmon Drive	Fleetwood Dr to Chickadee Dr	Widen 2 to 4 lanes - Fleetwood Dr to Chickadee Dr	Underway
N	Military Rd	Lemmon Dr to Echo Ave	Widen 2 to 4 lanes	Underway
N	Moya Blvd	Red Rock Rd to Echo Ave	Widen 2 to 4 lanes	
N	Moya Blvd Extension	Lemmon Dr to Echo Ave	New 2 lane road	
N	N. Hills Blvd	Golden Valley Rd to Buck Dr	Widen 2 to 4 lanes	
N	N/S Connector Rd (Private)	Stonebrook Pkwy to Wingfield Hills Rd	New 2 lane road	
N	North Virginia St	McCarran Blvd to Panther	Sidewalks and bike lanes. An off-street shared-use path may be considered	Underway
N	North Virginia St	Panther to Stead Blvd	Widen from 2 to 4 lanes and multimodal improvements	Underway
N	Oddie Blvd/Wells Ave	I-80 to Pyramid Way	Multimodal improvements	Complete
N	Parr Blvd	Ferrari McLeod to Raggio Pkwy	Interchange improvements	
N	Pyramid Hwy/Sun Valley/US 395 Connector Phase 1	Queen Way to Golden View	Widen Pyramid to 6 lanes from Queen Way to Golden View	Underway
N	Pyramid Hwy/Sun Valley/US 395 Connector Phase 2	Disc Drive Widening	Widen Disc drive from Pyramid Hwy to Vista Blvd	
N	Red Rock Rd	US 395 to Placerville Drive	Widen 2 to 4 lanes	
NS	Sierra Street	California Ave to 9th St	Widen sidewalks & add bike lanes	
N	Sky Vista Pkwy	Lemmon Dr to Silver Lake Rd	Widen 2 to 4 lanes	Complete
NS	Sparks Blvd	Greg to Baring	Multimodal improvements, widen 4 to 6 lanes - Greg to I-80, widen 4-6 lanes - I-80 to Springland	Underway
NS	Sparks Blvd	Greg to Baring	Multimodal improvements, widen 4 to 6 lanes - Greg to I-80, widen 4-6 lanes - I-80 to Springland	Underway
N	Stonebrook Parkway (Private)	N/S Connector Rd to Pyramid Highway	New 2 lane road	
N	Sun Valley Blvd	7th Ave to Scottsdale	Multimodal improvements	Underway
N	Victorian Avenue	16th Street to Pyramid Way	Bike lanes	
N	Vista Blvd	I-80 to Prater Way	Widen 4 to 6 lanes	
N	Whitelake Parkway (Private)	US 395 Interchange Improvements	Interchange improvements	
N	Whitelake Parkway (Private)	US 395 to Town Center North Road	Widen 2 to 4 lanes	
N	Wingfield Hills Rd (Private)	Existing Wingfield Hills Rd west to David Allen Pkwy	New 4 lane road	Complete



# RRIF Capital Improvement Plan (CIP)

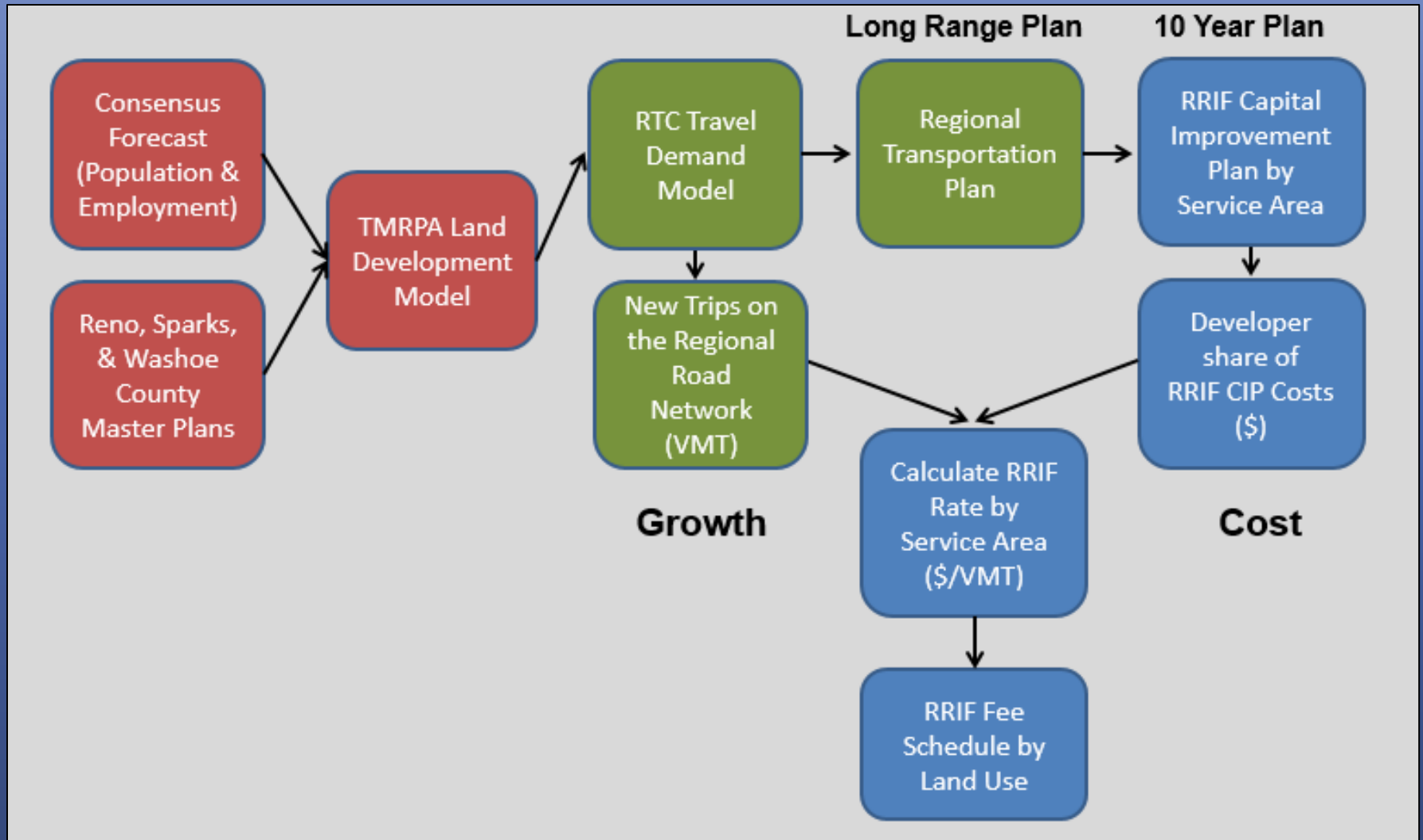
ITEM 5.2 ATTACHMENT A

Service Area	Roadway	Limits	Description	Current Status
S	4th Street {Reno}	Keystone Avenue to Evans Ave	Enhanced sidewalks and bus/bike lanes, intersection improvements	Underway
S	Center Street	Moran to 9th Street	Widen sidewalks & add bike lanes	
S	Damonte Ranch Pkwy (Private)	Veterans Pkwy to Rio Wrangler Pkwy	New 2 lane road	
S	Damonte Ranch Pkwy (Private)	I-580 to Double R	Roadway widening	
S	Talus Valley (Private)	South Meadows Pkwy to Rio Poco Rd	Traffic and circulation improvements	
S	Geiger Grade Realignment	Virginia St to Toll Rd	New 4 lane road	Underway
S	Keystone Ave	California to I-80	Multimodal improvements and Truckee River bridge replacement	
S	McCarran Blvd	Keitzke to Greensboro	Intersection and Operations	
S	Meridian & Santerra (Verdi) (Private)	Verdi Regional Road Network	Traffic and circulation improvements	
S	Mill Street	Keitzke to Terminal	Roadway widening and multimodal	Underway
S	Mill St/Terminal Way	Reno Tahoe International Airport to Lake St {downtown Reno}	Multimodal & intersection improvements, add EB lane from Keitzke Ln to US 395	
S	Pembroke Drive	McCarran Blvd to Veterans Pkwy	Roadway widening and multimodal	Underway
S	Rio Wrangler Extension North (Private)	South Meadows Pkwy to Bucephaius Pkwy	New 2 lane road	
S	Rio Wrangler Extension South (Private)	Damonte Ranch Pkwy to Veterans Pkwy	New 2 lane road	
S	S. Virginia Street	I-580 to Longley	Add NB Lane	Complete
NS	Sierra Street	California Ave to 9th St	Widen sidewalks & add bike lanes	
S	South Meadows Extension (Private)	Mojave Sky Drive to Rio Wrangler	New 4 lane road	RRIF Offset Agreement
NS	Sparks Blvd	Greg to Baring	Multimodal improvements, widen 4 to 6 lanes - Greg to I-80, widen 4-6 lanes - I-80 to Springland	Underway
NS	Sparks Blvd	Greg to Baring	Multimodal improvements, widen 4 to 6 lanes - Greg to I-80, widen 4-6 lanes - I-80 to Springland	Underway
S	Steamboat Pkwy	Promenade Way to Veterans Pkwy	Widen from 4 to 6 lanes	Complete
S	Vassar Street	Holcomb Avenue to Terminal Way	Bike lanes	
S	Vine Street	Riverside Drive to University Terrace	Bike lanes	Underway





# Development of RRIF Fees





## RRIF Network:

*The network of roads consisting of high (expressway), moderate (major arterial) and low (minor arterial) access control arterial roadways (excluding freeways), and freeway ramps determined by the RTC as regionally significant, and collector roads with a forecast volume of 14,000 annualized average daily trips at build-out, as identified in the most recent Capital Improvement Plan.*

## New Roadways:

*New roadways proposed by a private development and not listed on the Capital Improvement Plan may be added to the RRIF Network coincident with or after the first two lanes are constructed and if it provides a significant connection between other regional roads or serves regional traffic in excess of the proposed development.*



## RRIF Eligible Improvements:

*Non-site-related RRIF Capital Improvements*

## RRIF Capital Improvements:

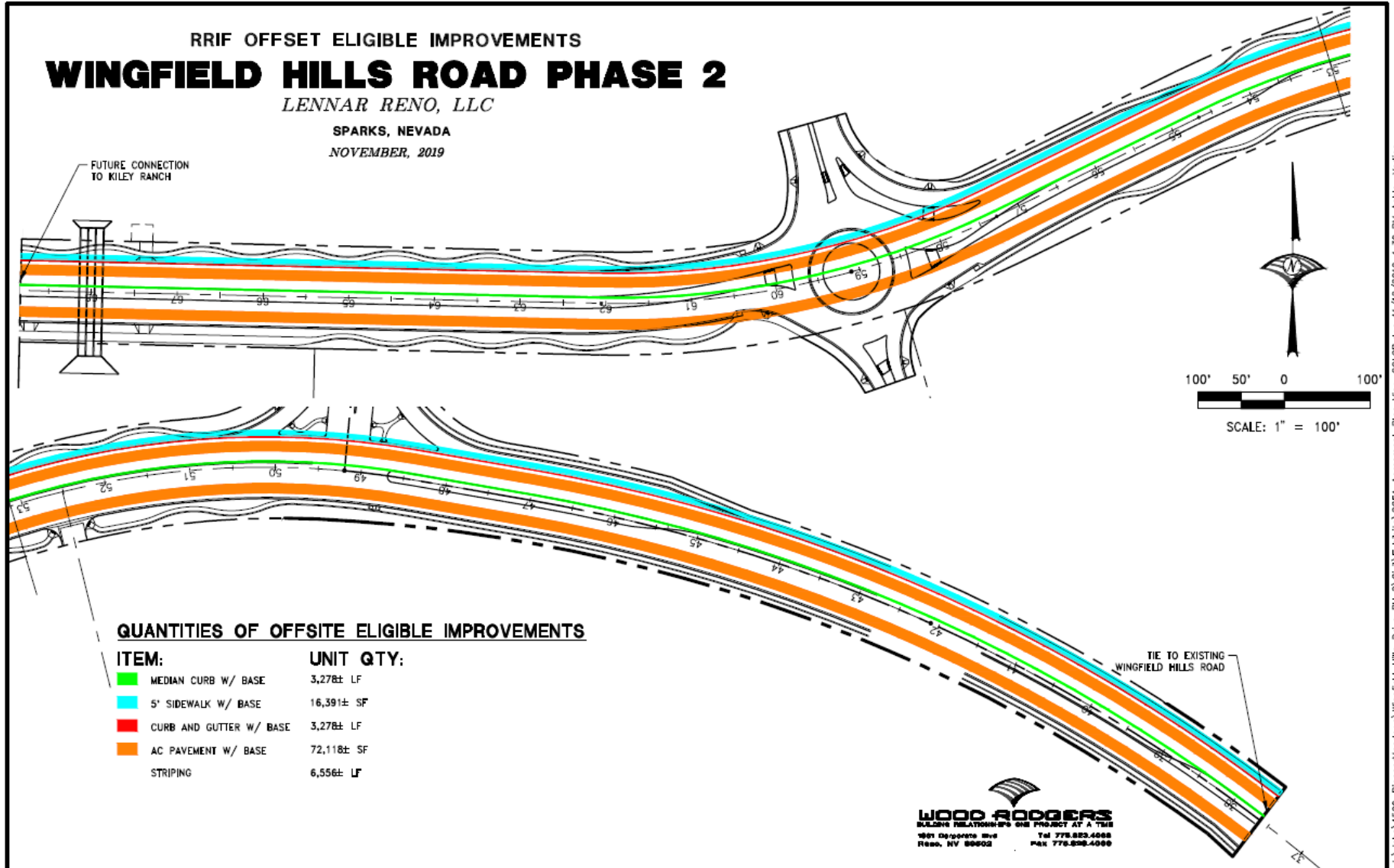
*Capacity-adding improvements or expansions to the RRIF Network designated on the Capital Improvement Plan and appurtenances, traffic signals and other incidentals necessary for such facilities, including:*

- (a) land, property, rights, and easements including the cost of acquisition or condemnation;*
- (b) professional services associated with actual construction;*
- (c) new road construction, including new through lanes, new turn lanes, and new bridges*
- (d) relocation of utilities to accommodate new road construction; and*
- (e) in association with new road alignments, necessary drainage facilities, street lighting, traffic signalization, curbing sidewalks, medians and shoulders, and bicycle and pedestrian facilities*



# RRIF Network & Eligibility

ITEM 5.2 ATTACHMENT A



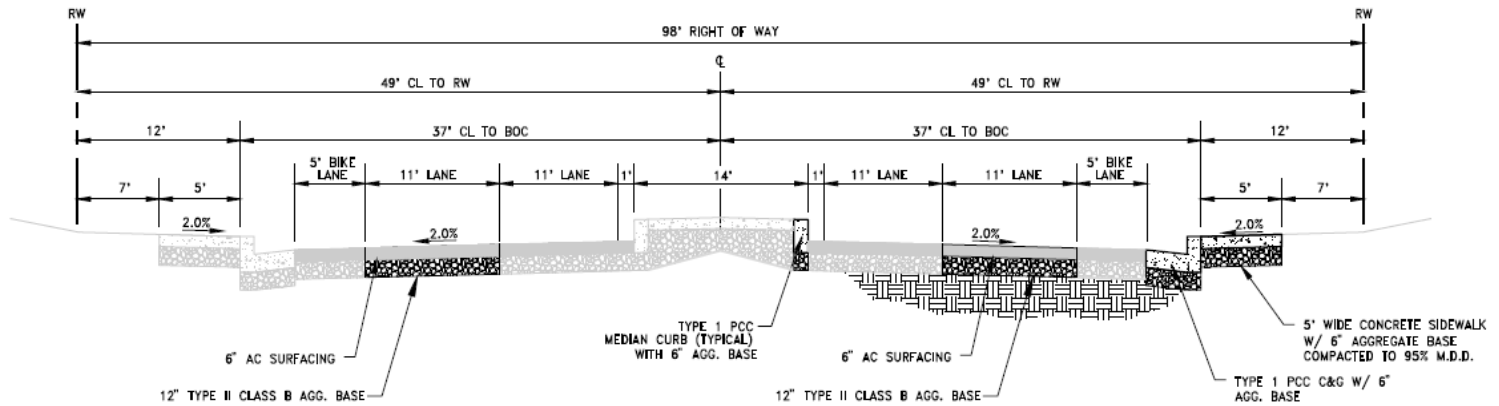


### WINGFIELD HILLS ROAD PHASE 2

LENNAR RENO, LLC

SPARKS, NEVADA

NOVEMBER, 2019



### WINGFIELD HILLS ROAD

NOT TO SCALE

#### RTC OFFSET ELIGIBLE IMPROVEMENTS:

THE TOTAL CENTERLINE LENGTH OF THE WINGFIELD HILLS ROAD PHASE 2 IMPROVEMENTS IS 3122'. THE FOLLOWING DESCRIBES THE RTC CREDIBLE IMPROVEMENTS (SHOWN ABOVE).

- ONE 11' LANE, EACH SIDE OF ROADWAY
- ONE SIDE OF MEDIAN CURB W/BASE
- ONE SIDE OF CURB AND GUTTER W/BASE
- ONE SIDE OF SIDEWALK W/BASE
- ADDITIONAL ROW WIDTH: 22'
- STORM DRAIN PERCENTAGE OF TOTAL
- SIGNAGE/STRIPING



- NRS 278B
  - Requires that capital facilities be expressed in terms of “service units.”
  - Statute defines a service unit as “a standardized measure of consumption, use or discharge which is attributable to an individual unit of development calculated for a particular category of capital improvement of facility expansions.”
  
- Per the RRIF GAM definitions,
  - Traffic signals are still RRIF Eligible Improvements to the RRIF Network as long as designated on the Capital Improvement Plan.
  
- Removing System-wide Spot Improvement Projects
  - Simplifies “service units” when calculating RRIF Fees
  - Provides clarity on Offset-Eligible Improvements identified on the RRIF CIP



# Next Steps & Schedule

- Update RRIF CIP to 8<sup>th</sup> Edition
  - RTC planning incorporate comments received by AWG into RTP project list
  - RTC RRIF staff incorporate private projects/corridors currently planned
  - RTC RRIF staff incorporate comments from RRIF TAC
  
- Next Steps
  - Provide RRIF TAC Draft RRIF CIP List
  - RRIF Fee Calculations
  - Update GAM/CIP Manuals
    - Review land use categories in the GAM
  
- Schedule
  - January 2025: Provide RRIF CIP List to RRIF TAC
  - March 2025: Provide GAM/CIP update to RRIF TAC
  - April 2025: Present RRIF TAC fee calculations
  - May/June 2025: Final review of RRIF GAM/CIP Manuals
  - July/August 2025 – RRIF GAM/CIP Adoption by Planning Commission and City Council/County Commission



# Questions

**ITEM 5.2 ATTACHMENT A**

[rtcwashoe.com](http://rtcwashoe.com)  
Your RTC. Our Community.

