



REGIONAL TRANSPORTATION COMMISSION
Public Transportation • Streets and Highways • Planning



RTC Transit Fixed Route Bus Operating Statistics

**RTC RIDE
RTC RAPID
RTC REGIONAL CONNECTOR**

December 2024

RTC Transit Fixed Route Bus Operating Statistics Report

TABLE OF CONTENTS

RTC Transit Fixed Route Bus Highlights.....	Page ii
RTC Transit Fixed Route Bus Summary	Page iv
System Reports.....	Page 1
Economic Data	Page 5
Route Comparison Data.....	Page 7
Monthly Operating Statistics.....	Page 9
RTC RAPID Virginia Line & Route 1	Page 14
RTC RAPID Lincoln Line & Route 11	Page 16
RTC REGIONAL CONNECTOR Carson Line	Page 18
RTC TMCC and UNR Education Pass.....	Page 20

RTC Transit Fixed Route Bus Highlights

December 2024

RTC Transit Fixed Route Bus

- For the month of December, there were 454,469 rides, **up 10.8%** compared with last year (page 1). Weighted average daily ridership was 15,235, **up 9.4%** compared with last year (page 3).
- For the most recent 12 months, there were 5.58 million rides **up 10.5%** compared with the previous 12 months.
- In December, there were 22,283 service hours, **up 1.8%** compared with last year (page 9).
- Productivity was 20.4 rides per service hour, **up 8.8%** compared with last year (page 9).

External Impacts on Ridership

- The average temperature this month was 39.2° F, 0.8° F lower compared with last year.
- The Reno-Sparks area preliminary unemployment rate in November was 4.3%. Unemployment has been gradually trending upward since a low of 2.8% in December 2021.
- Nevada's preliminary unemployment rate for October was 5.7%. The national unemployment rate for October was 4.2%.

Historical Impacts Causing a Downward Trend in Bus Ridership

- According to Bureau of Labor Statistics, 27% of US employees worked remotely at least part of the time in 2023, with several academic surveys suggesting it is closer to 50%*.
- In April 2022, the City of Reno entered an agreement with Bird electric scooters to serve Reno.
- In 2021, Keolis transit workers went on strike August 3 to 13, September 27 to October 20, and November 9 to December 3. Limited service was provided on Routes 1, 7, and 11 and RTC REGIONAL CONNECTOR to Carson City. RTC provided free rides on RIDE, FlexRIDE, taxis, and UberX during the second and third strikes.
- A combination of the pandemic, stimulus checks, easy car financing, and gig jobs requiring cars has likely resulted in a large number of people abandoning transit for car ownership.
- In response to the COVID-19 pandemic, Governor Sisolak ordered the shutdown of casinos and other nonessential businesses in March 2020. In May 2020, Governor Sisolak reopened a number of businesses including bars, salons, gyms, and retail. Casinos were allowed to reopen in June 2020. In May 2021, maximum business capacity increased to 100% in Washoe County.
- There has been an increase in people working primarily from home, approximately eight million in 2018 according to US Census Bureau estimates, taking over transit as the second most common means of getting to work.
- While employment has increased in the region, the makeup of local employment has significantly changed. When Reno was a tourism and gaming town, a large portion of employment was in the low-wage, service industry whereas recently jobs tend to be higher wage and geographically dispersed requiring cars.
- Uber started permanent service in Reno in 2015 and Lyft started shortly after.
- As of 2014, Nevada provides driver's licenses for people who are undocumented immigrants.
- As downtown and midtown areas in-fill and gentrify, this also pushes lower income people to the suburbs where they are much more likely to need cars. This is a nationwide trend.
- The drop in ridership (before COVID) has been a nationwide trend as illustrated by the chart on page 4 which compares RTC transit ridership with US and Canadian bus ridership.
- With the growth of online shopping and food delivery, it is also likely that bus trips used for shopping and dining out has fallen substantially, especially for those with mobility challenges who would prefer online shopping and food delivery. Also, people without cars may decide to purchase a car with the intention of using the car to deliver food and finance the car.

* - <https://www.forbes.com/sites/forbesfinancecouncil/2023/11/06/changing-environment-altering-employer-obligations-for-remote-workers/?sh=7c9e531e2145>



RTC Transit Fixed Route Bus Summary

Route Ridership

- For December, Route 18 (serving Glendale) had the highest productivity with 26.3 rides per service hour.
- Route 1 (serving S Virginia St between downtown Reno and Meadowood Mall) came in second with 24.0.
- Route 5 (serving Sutro – Sun Valley) had the third highest productivity in the system with 23.9 rides per service hour (page 7).
- Route 11 had the highest increase in ridership at 32.6%. In May 2023, Routes 3 and 26 were eliminated with Route 11 absorbing parts of Routes 3 and 26.
- Route 16 (serving Idlewild) ridership had the second highest increase compared with last year by 29.0%.
- Route 21 (Sparks Marina) had the third highest increase in ridership at 25.0%.

RTC RAPID (Virginia & Lincoln Lines Combined)

- This month, there were 118,408 rides on RTC RAPID **up 5.6%** compared with last year. By comparison, system ridership was up 10.8%. The productivity of RTC RAPID at 25.0 rides per service hour was **up 2.0%** compared with last year. By comparison, system productivity was 20.4 rides per service hour, **up 8.8%** compared with last year.
- There were 1.42 million rides over the most recent 12 months, **up 4.5%** compared with the previous 12 months.
- RAPID rides now make up 26.1% of system ridership.
- 45.7% of all system rides were taken on RAPID and Routes 1 and 11.

RTC RAPID Virginia Line

- This month, there were 81,913 rides on the Virginia Line **up 5.2%** compared with last year. Productivity at 25.6 rides per service hour is **up 2.1%** compared with last year.
- Ridership for both the Virginia Line and Route 1 was 113,334 **up 3.1%** compared with last year (page 14). There were 1.39 million rides over the most recent 12 months, **up 3.3%** compared with the previous 12 months.

RTC RAPID Lincoln Line

- This month, there were 36,495 rides on the Lincoln Line **up 6.4%** compared with last year. Productivity at 23.9 rides per service hour is **up 2.5%** compared with last year.
- Ridership for both the Lincoln Line and Route 11 was 94,246 **up 21%** compared with last year (page 16). There were 1.12 million rides for the most recent 12 months, **up 26%** compared with the previous 12 months.

RTC REGIONAL CONNECTOR Carson Line

- There were 1,456 rides this month, **up 1.5%** compared with last December (page 18). At 5.2 rides per service hour, productivity is down 4.0% last year. There were 20,173 rides for the most recent 12 months, **up 2.1 %** compared with the previous 12 months.

RTC TMCC and UNR Education Pass

- There were 10,523 UNR Ed-Pass rides, **up 14%** compared with last year (page 20).
- There were 9,659 TMCC Ed-Pass rides, **up 78%** compared with last year.

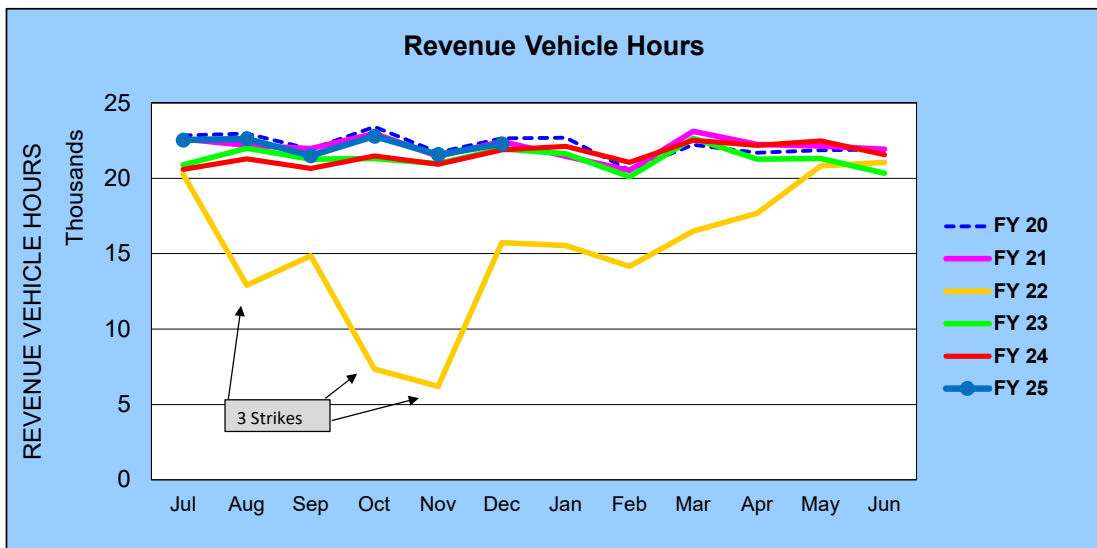
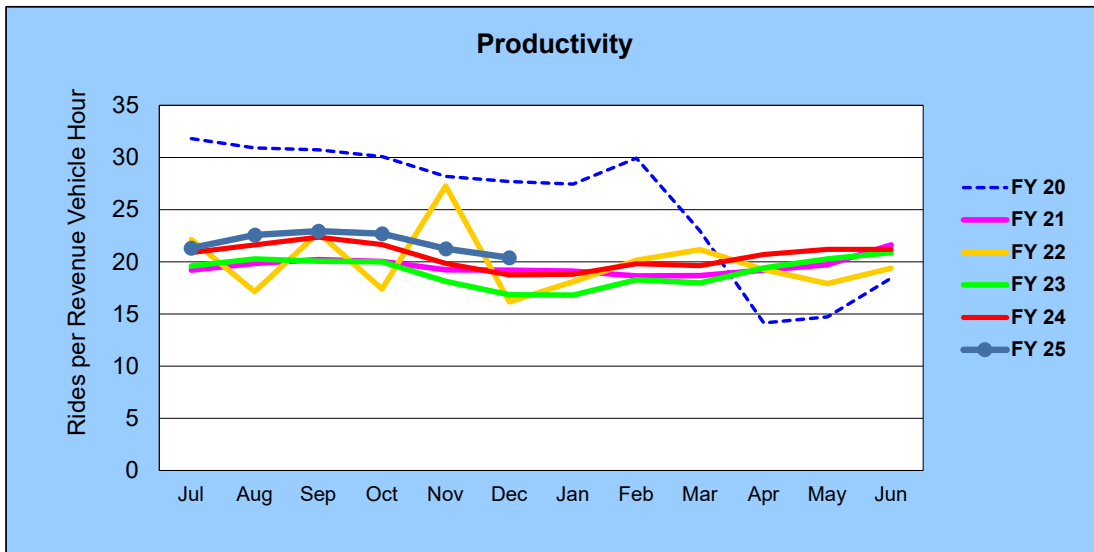
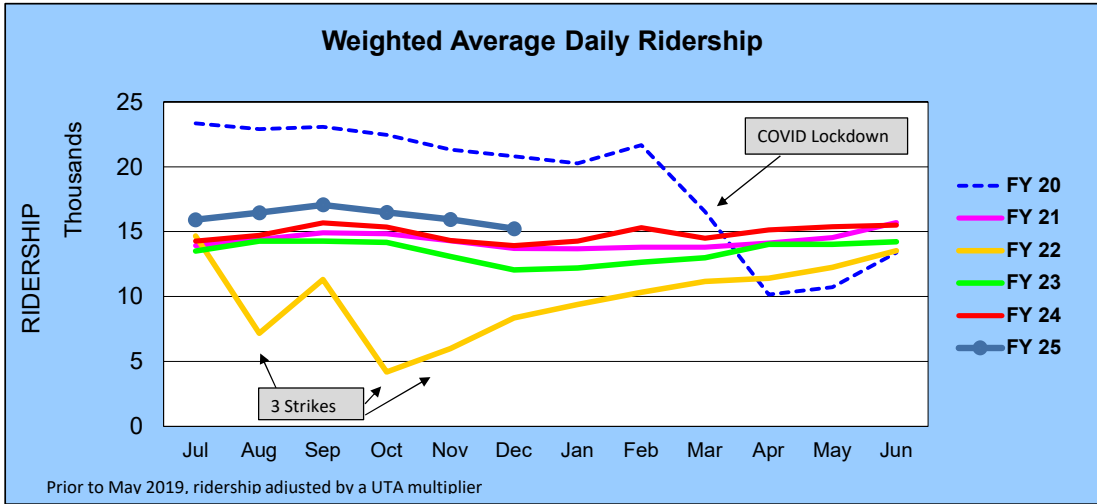
RTC Transit Operating Statistics

RTC Transit Fixed Route Bus						
Rolling 12-Month Ridership Comparison						
Most Recent 12 Months			Percent Change	Previous 12 Months		
Month	Year	Ridership		Month	Year	Ridership
Jan	2024	416,157	14.6%	Jan	2023	363,174
Feb		417,018	13.5%	Feb		367,575
Mar		442,102	8.6%	Mar		407,074
Apr		459,351	11.3%	Apr		412,674
May		476,695	10.3%	May		432,170
Jun		456,808	7.5%	Jun		425,106
Jul		480,395	11.8%	Jul		429,718
Aug		510,365	10.9%	Aug		460,384
Sep		493,117	6.8%	Sep		461,670
Oct		516,977	11.1%	Oct		465,243
Nov		458,480	10.3%	Nov		415,646
Dec		454,469	10.8%	Dec		410,240
TOTAL		5,581,934	10.5%	TOTAL		5,050,674

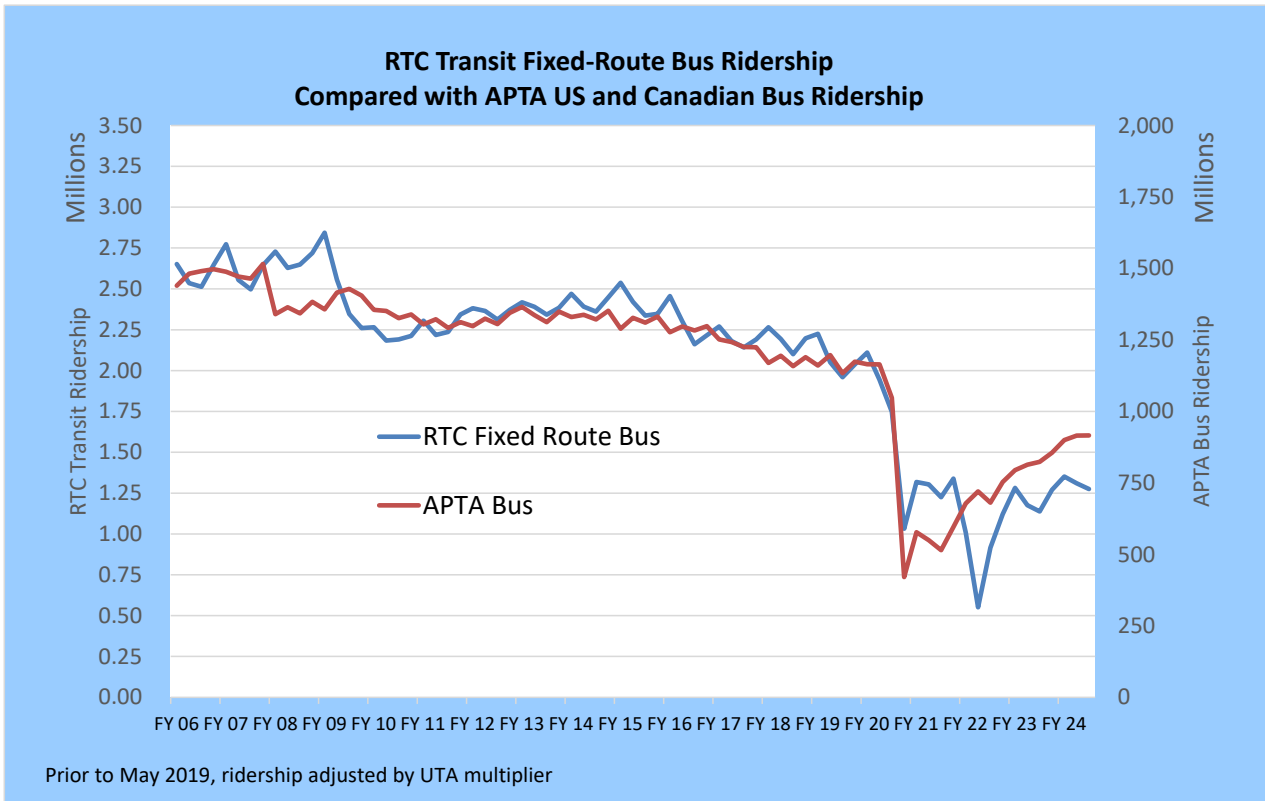
RTC Transit includes RTC RIDE, RTC RAPID, & RTC REGIONAL CONNECTOR

RTC Transit Fixed Route Bus

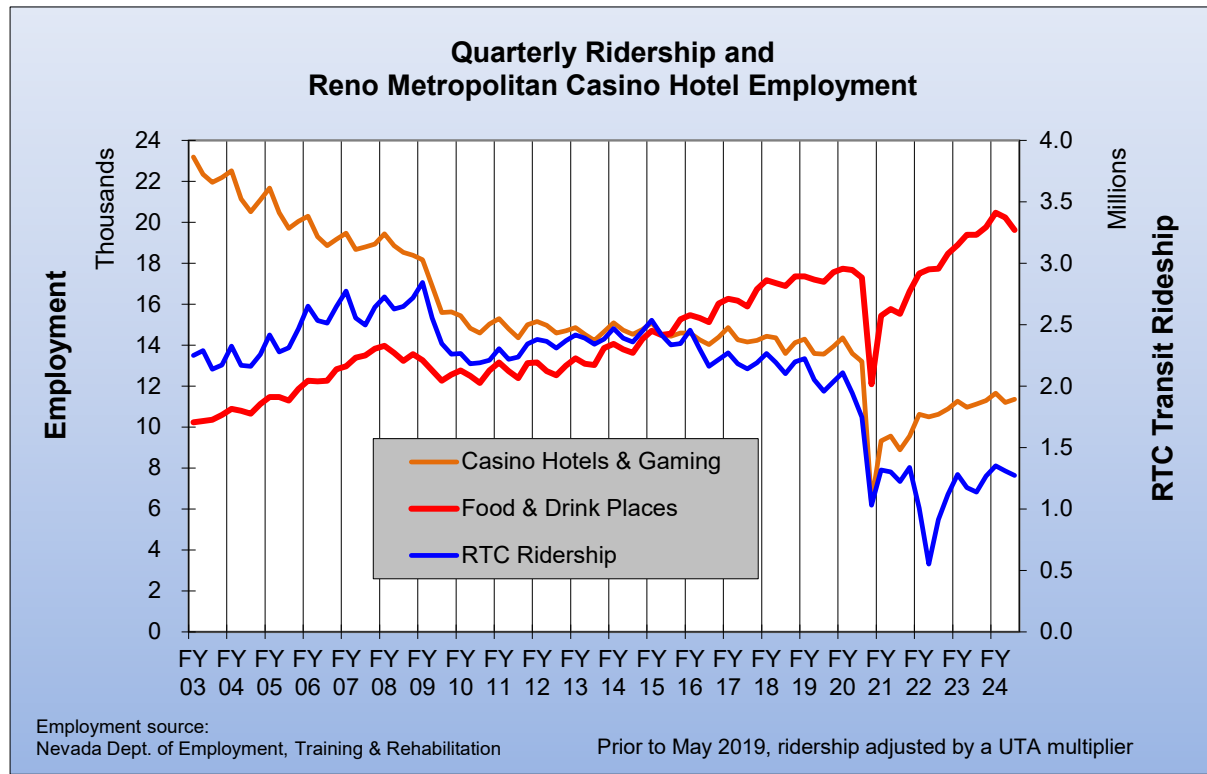
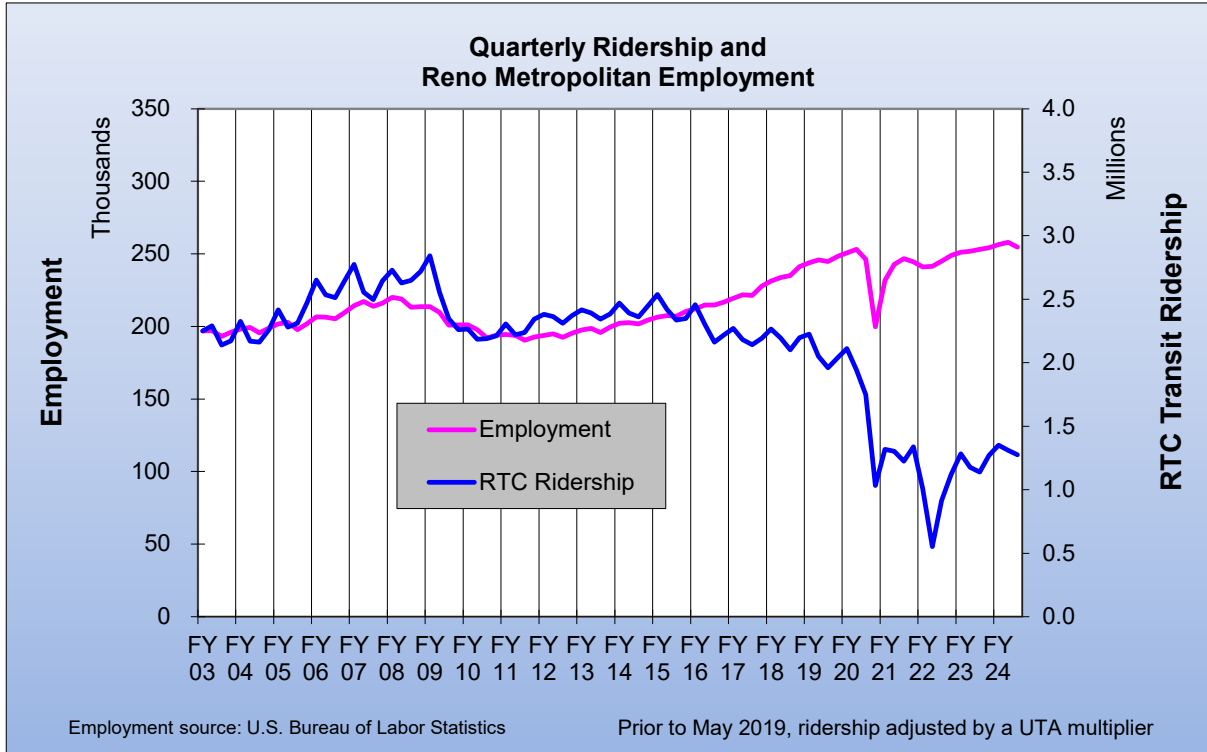
FISCAL YEAR COMPARISONS



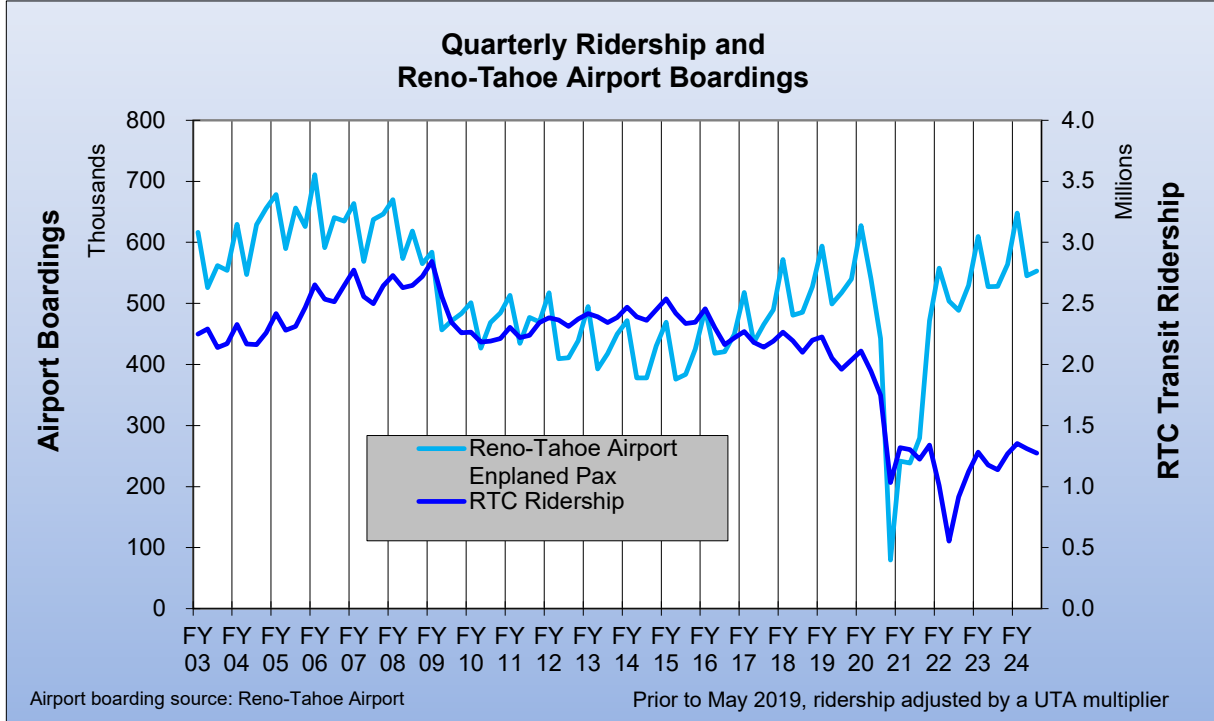
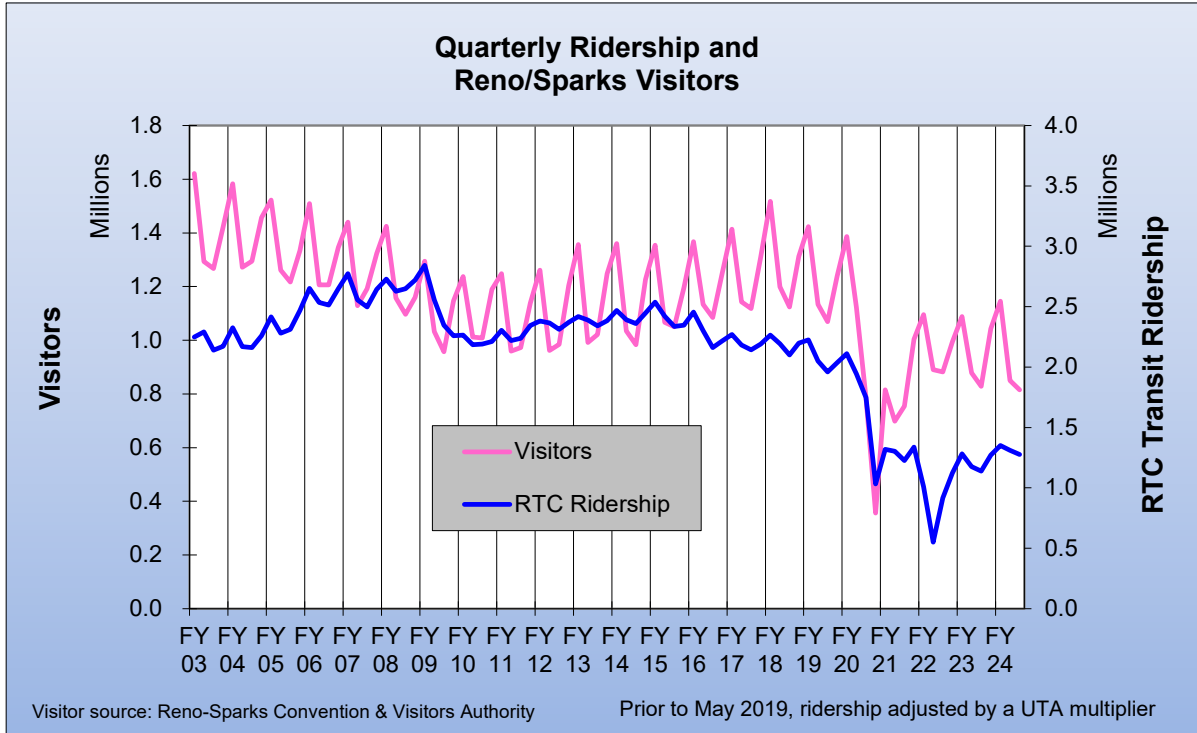
RTC Transit Fixed-Route Bus						
Weighted Average Daily Ridership Rolling 12-Month Ridership Comparison						
Most Recent 12 Months			Percent Change	Previous 12 Months		
Month	Year	Ridership		Month	Year	Ridership
Jan	2024	14,262	17.1%	Jan	2023	12,184
Feb		15,294	21.0%	Feb		12,638
March		14,500	11.7%	March		12,981
Apr		15,129	7.9%	Apr		14,016
May		15,373	9.7%	May		14,008
Jun		16,157	13.6%	Jun		14,227
Jul		15,924	11.7%	Jul		14,257
Aug		16,462	12.0%	Aug		14,698
Sep		17,068	8.9%	Sep		15,675
Oct		16,494	7.4%	Oct		15,353
Nov		15,951	11.4%	Nov		14,320
Dec		15,235	9.4%	Dec		13,931



RTC Transit Fixed-Route Bus



RTC Transit Fixed-Route Bus



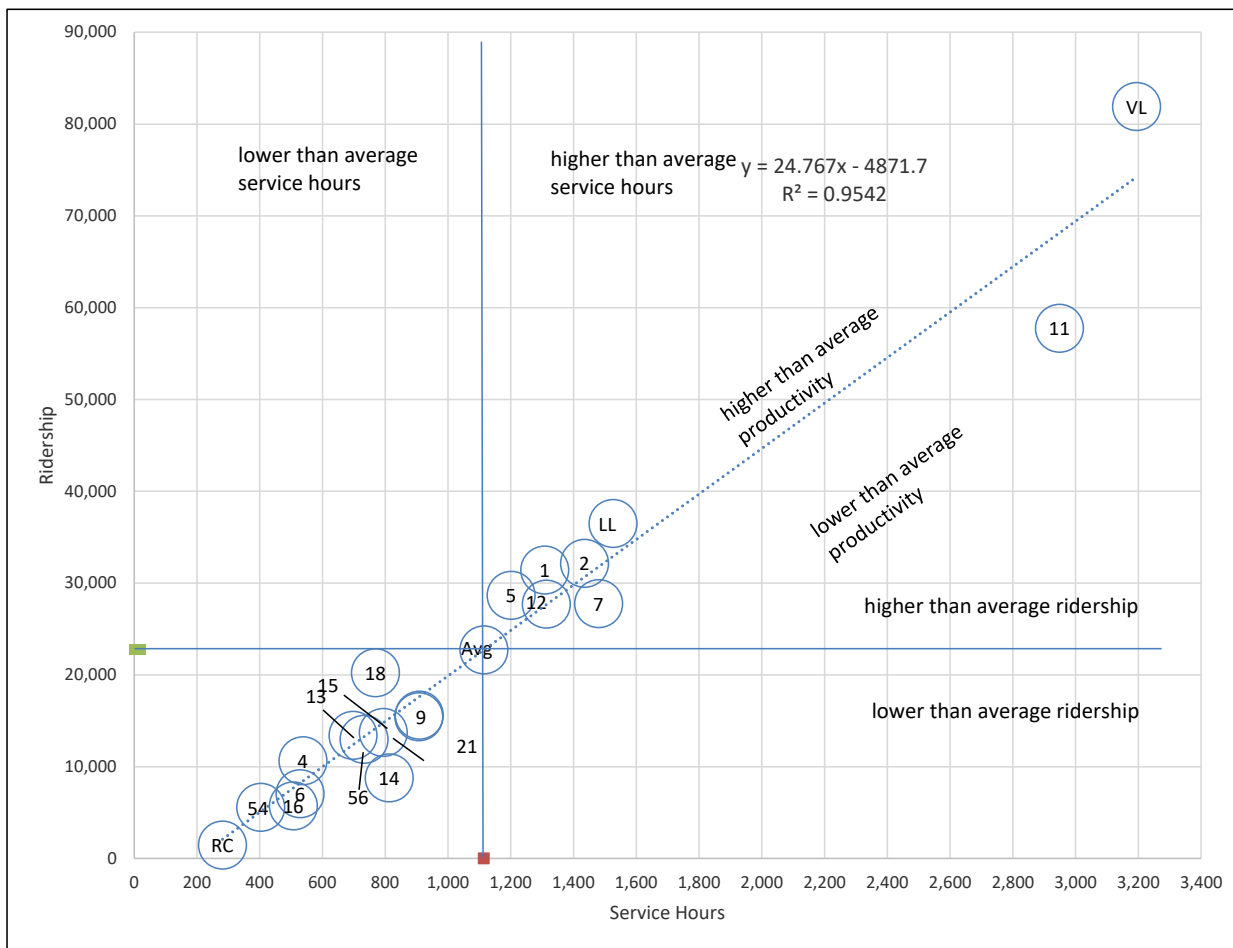
RTC Route Comparison Report

Dec 2024

Route *	Productivity	Route	Svs Hours Change Fr. Last Year	Route	Ridership	Route	Ridership Change From Last Year
18	26.3	21	8.3%	RAP VL	81,913	11	32.6%
RAP VL	25.6	RTC RC	5.4%	11	57,751	16	29.0%
1	24.0	RAP LL	3.9%	RAP LL	36,495	21	25.0%
RAP LL	23.9	RAP VL	3.0%	2	32,151	12	20.6%
5	23.9	56	2.2%	1	31,421	56	12.8%
2	22.4	18	2.2%	5	28,662	9	11.8%
12	21.1	12	2.0%	7	27,753	7	11.5%
TOTAL	20.4	9	2.0%	12	27,701	2	11.2%
4	19.8	TOTAL	1.8%	18	20,225	5	10.9%
11	19.6	15	1.6%	21	15,614	TOTAL	10.8%
13	19.2	5	1.5%	9	15,437	13	10.2%
7	18.8	14	1.4%	15	13,732	15	9.1%
56	17.7	13	1.1%	13	13,410	RAP LL	6.4%
15	17.3	16	0.9%	56	12,985	6	5.7%
21	17.2	54	0.6%	4	10,637	RAP VL	5.2%
9	17.0	4	0.5%	14	8,772	14	4.5%
54	13.8	11	0.5%	6	7,050	18	4.2%
6	13.3	7	0.5%	16	5,723	RTC RC	1.5%
16	11.3	1	0.4%	54	5,581	54	0.8%
14	10.8	6	0.4%	RTC RC	1,456	1	-2.2%
RTC RC	5.2	2	-0.1%	TOTAL	454,469	4	-6.2%

* - RTC RC is RTC REGIONAL CONNECTOR.

RTC Route Comparison Chart Dec 2024



2024

"higher" and "lower" refer to higher or lower than the average of all routes (not the system average)

RTC TRANSIT OPERATING STATISTICS

Dec 2024

Route	Total Ridership	Previous Year	Change	Vehicle Revenue Hours	Previous Year	Change	Rides/VRH	Previous Year	Change
RAPID VL	81,913	77,847	5%	3,194	3,101	3%	25.6	25.1	2.1%
RAPID LL	36,495	34,294	6%	1,526	1,469	4%	23.9	23.3	2.5%
1	31,421	32,119	-2%	1,308	1,302	0%	24.0	24.7	-2.6%
2	32,151	28,925	11%	1,435	1,436	0%	22.4	20.1	11.2%
4	10,637	11,335	-6%	537	535	1%	19.8	21.2	-6.7%
5	28,662	25,851	11%	1,201	1,184	1%	23.9	21.8	9.2%
6	7,050	6,672	6%	528	526	0%	13.3	12.7	5.3%
7	27,753	24,883	12%	1,480	1,473	0%	18.8	16.9	11.0%
9	15,437	13,812	12%	907	889	2%	17.0	15.5	9.6%
11	57,751	43,561	33%	2,949	2,934	0%	19.6	14.8	31.9%
12	27,701	22,976	21%	1,313	1,287	2%	21.1	17.8	18.2%
13	13,410	12,168	10%	698	690	1%	19.2	17.6	9.0%
14	8,772	8,397	4%	812	801	1%	10.8	10.5	3.1%
15	13,732	12,581	9%	794	782	2%	17.3	16.1	7.5%
16	5,723	4,437	29%	507	503	1%	11.3	8.8	27.9%
18	20,225	19,408	4%	769	752	2%	26.3	25.8	2.0%
21	15,614	12,487	25%	908	839	8%	17.2	14.9	15.5%
54	5,581	5,537	1%	403	401	1%	13.8	13.8	0.2%
56	12,985	11,516	13%	732	717	2%	17.7	16.1	10.3%
RC Carson	1,456	1,434	2%	281	267	5%	5.2	5.4	-3.7%
Misc. Service		0	N/A	0	0	N/A		0.0	N/A
Dec 2024	454,469	410,240	10.8%	22,283	21,888	1.8%	20.4	18.7	8.8%
Dec '23	410,240			21,888			18.7		
Perc. Change	10.8%			1.8%			8.8%		

RTC TRANSIT OPERATING STATISTICS

Dec 2024

Route	Vehicle Revenue Miles	Rides/VRM	Est. Gross Operating Cost	Est. Cost Per Per VRH	Est. Cost Per VRM	Est. Cost Per Ride
RAPID VL	33,092	2.48	\$526,580	\$165	\$15.91	\$6.43
RAPID LL	14,719	2.48	\$251,508	\$165	\$17.09	\$6.89
1	12,936	2.43	\$215,610	\$165	\$16.67	\$6.86
2	15,077	2.13	\$236,557	\$165	\$15.69	\$7.36
4	6,968	1.53	\$88,607	\$165	\$12.72	\$8.33
5	16,068	1.78	\$198,026	\$165	\$12.32	\$6.91
6	4,897	1.44	\$87,101	\$165	\$17.79	\$12.35
7	26,262	1.06	\$243,958	\$165	\$9.29	\$8.79
9	10,222	1.51	\$149,464	\$165	\$14.62	\$9.68
11	31,201	1.85	\$486,065	\$165	\$15.58	\$8.42
12	13,180	2.10	\$216,514	\$165	\$16.43	\$7.82
13	6,425	2.09	\$114,986	\$165	\$17.90	\$8.57
14	7,829	1.12	\$133,912	\$165	\$17.11	\$15.27
15	8,173	1.68	\$130,857	\$165	\$16.01	\$9.53
16	3,510	1.63	\$83,566	\$165	\$23.81	\$14.60
18	8,356	2.42	\$126,759	\$165	\$15.17	\$6.27
21	9,954	1.57	\$149,755	\$165	\$15.04	\$9.59
54	6,476	0.86	\$66,492	\$165	\$10.27	\$11.91
56	10,792	1.20	\$120,714	\$165	\$11.19	\$9.30
RC Carson	8,457	0.17	\$46,389	\$165	\$5.49	\$31.86
Misc. Service						
Dec 2024	254,595	1.79	\$3,673,420	\$165	\$14.43	\$8.08
Dec '23	247,759	1.66	\$3,455,240	\$158	\$13.95	\$8.42
Perc. Change	2.8%	7.8%	6.3%	4.4%	3.5%	-4.0%

RTC Transit Operating Statistics

Jan'24 - Dec '24

Route	Total Ridership	Previous Year	Change	Vehicle Revenue Hours	Previous Year	Change	Rides/VRH	Previous Year	Change
RAPID VL	973,415	920,935	6%	37,914	37,414	1%	25.7	24.6	4%
RAPID LL	449,527	441,256	2%	18,044	17,744	2%	24.9	24.9	0%
1	417,168	424,798	-2%	15,401	16,338	-6%	27.1	26.0	4%
2	392,654	360,417	9%	17,212	17,294	0%	22.8	20.8	9%
4	149,473	138,488	8%	6,358	6,407	-1%	23.5	21.6	9%
5	356,613	331,582	8%	14,346	14,213	1%	24.9	23.3	7%
6	90,606	76,723	18%	6,268	6,055	4%	14.5	12.7	14%
7	360,435	320,092	13%	17,720	18,548	-4%	20.3	17.3	18%
9	196,777	166,091	18%	10,773	11,392	-5%	18.3	14.6	25%
11	675,245	448,326	51%	35,405	22,897	55%	19.1	19.6	-3%
12	327,747	280,450	17%	15,501	14,057	10%	21.1	20.0	6%
13	169,273	143,359	18%	8,335	8,106	3%	20.3	17.7	15%
14	110,674	96,773	14%	9,674	9,070	7%	11.4	10.7	7%
15	178,136	152,649	17%	9,450	9,265	2%	18.8	16.5	14%
16	67,575	50,861	33%	6,011	5,461	10%	11.2	9.3	21%
18	242,613	253,143	-4%	9,208	9,446	-3%	26.3	26.8	-2%
21	175,337	152,733	15%	10,572	9,134	16%	16.6	16.7	-1%
54	68,646	66,600	3%	4,786	5,168	-7%	14.3	12.9	11%
56	159,847	129,737	23%	8,764	7,638	15%	18.2	17.0	7%
RC Carson	20,173	19,755	2%	3,404	3,312	3%	5.9	6.0	-1%
Misc. Service									
Current 12 Months	5,581,934	5,050,674	10.5%	265,146	254,085	4.4%	21.1	19.9	5.9%
Previous 12 Months	5,050,674			254,085			19.9		
Perc. Change	10.5%			4.4%			5.9%		

RTC Transit Operating Statistics

Jan'24 - Dec '24

Route	Vehicle Revenue Miles (thousand)	Rides/VRM	Est. Gross Operating Cost (thousand)	Est. Cost Per VRH	Est. Cost Per VRM	Est. Cost Per Ride
RAPID VL	379.1	2.57	\$6,119	\$161	\$16.14	\$6.29
RAPID LL	173.8	2.59	\$2,912	\$161	\$16.75	\$6.48
1	152.3	2.74	\$2,485	\$161	\$16.32	\$5.96
2	180.5	2.18	\$2,778	\$161	\$15.39	\$7.07
4	82.4	1.81	\$1,026	\$161	\$12.45	\$6.86
5	191.6	1.86	\$2,315	\$161	\$12.08	\$6.49
6	58.1	1.56	\$1,011	\$161	\$17.42	\$11.16
7	313.7	1.15	\$2,860	\$161	\$9.12	\$7.93
9	121.2	1.62	\$1,739	\$161	\$14.35	\$8.84
11	365.5	1.85	\$5,711	\$161	\$15.63	\$8.46
12	156.7	2.09	\$2,502	\$161	\$15.97	\$7.63
13	76.4	2.22	\$1,345	\$161	\$17.61	\$7.95
14	93.2	1.19	\$1,561	\$161	\$16.74	\$14.11
15	97.3	1.83	\$1,525	\$161	\$15.68	\$8.56
16	41.7	1.62	\$970	\$161	\$23.24	\$14.36
18	100.1	2.42	\$1,486	\$161	\$14.85	\$6.13
21	115.7	1.52	\$1,707	\$161	\$14.76	\$9.73
54	76.8	0.89	\$772	\$161	\$10.05	\$11.25
56	129.1	1.24	\$1,414	\$161	\$10.95	\$8.85
RC Carson	102.3	0.20	\$549	\$161	\$5.37	\$27.23
Misc. Service						
Current 12 Months	3,007.4	1.86	\$42,788	\$161	\$14.23	\$7.67
Previous 12 Months	2,851.0	1.77	\$38,796	\$153	\$13.61	\$7.68
Perc. Change	5.5%	4.8%	10.3%	5.7%	4.6%	-0.2%

December

Jan 2024 - Dec 2024

	2024	2023	Percent Change	Current 12 Months	Previous 12 Month	Percent Change
Single Ride Cash						
Full Fare	3,138	4,291	-27%	38,936	61,042	-36%
Reduced*	5,559	6,369	-13%	58,045	87,136	-33%
RTC ACCESS ID	139	307	-55%	3,153	4,044	-22%
Total	8,836	10,967	-19%	100,134	152,222	-34%
Day Pass Cash						
Full Fare	48,842	49,950	-2.2%	561,655	695,024	-19%
Reduced*	60,283	66,023	-8.7%	678,837	830,834	-18.3%
Total	109,125	115,973	-5.9%	1,240,492	1,525,858	-19%
Pre-Purchase Period Pass						
Full Fare	115,578	105,530	9.5%	1,180,491	1,259,211	-6%
Reduced*	160,500	134,304	20%	1,541,572	1,525,576	1%
Total	276,078	239,834	15%	2,722,063	2,784,787	-2%
Transfers	359	163	120%	2,992	2,634	14%
Flow Through	8,216	3,731	120%	54,697	62,570	-13%
Free Rides	29,249	22,058	33%	300,210	307,521	-2%
U/Ed-Pass Free Rides	20,182	14,671	38%	204,805	178,410	15%
Stored Ride Pass	2,425	2,843	-15%	32,874	36,672	-10%
Full Fare	184,478	172,181	7.1%	1,950,651	2,198,214	-11.3%
Reduced*	269,935	237,953	13%	2,716,766	2,851,076	-5%
Total Ridership	454,469	410,240	10.8%	5,581,934	5,050,674	10.5%
Previous 12 Months	410,240			5,050,674		
Change	10.8%			10.5%		
Vehicle Revenue Hours	22,283	21,888	1.8%	265,146	254,085	4.4%
Previous 12 Months	21,888			254,085		
Change	1.8%			4.4%		
Rides / VRH	20.4	18.7	8.8%	21.1	19.9	5.9%
Previous 12 Months	18.7			19.9		
Change	8.8%			5.9%		
Vehicle Revenue Miles	254,595	247,759	2.8%	3,007,370	2,851,004	5.5%
Rides / VRM	1.79	1.66	7.8%	1.86	1.77	4.8%
Est. Gross Operating Cost	\$3,673,420	\$3,455,240	6.3%	\$42,787,775	\$38,795,554	10.3%
Est. Cost Per VRH	\$165	\$158	4.4%	\$161.37	\$152.69	5.7%
Est. Cost Per VRM	\$14.43	\$13.95	3.5%	\$14.23	\$13.61	4.6%
Est. Cost Per Ride	\$8.08	\$8.42	-4.0%	\$7.67	\$7.68	-0.2%

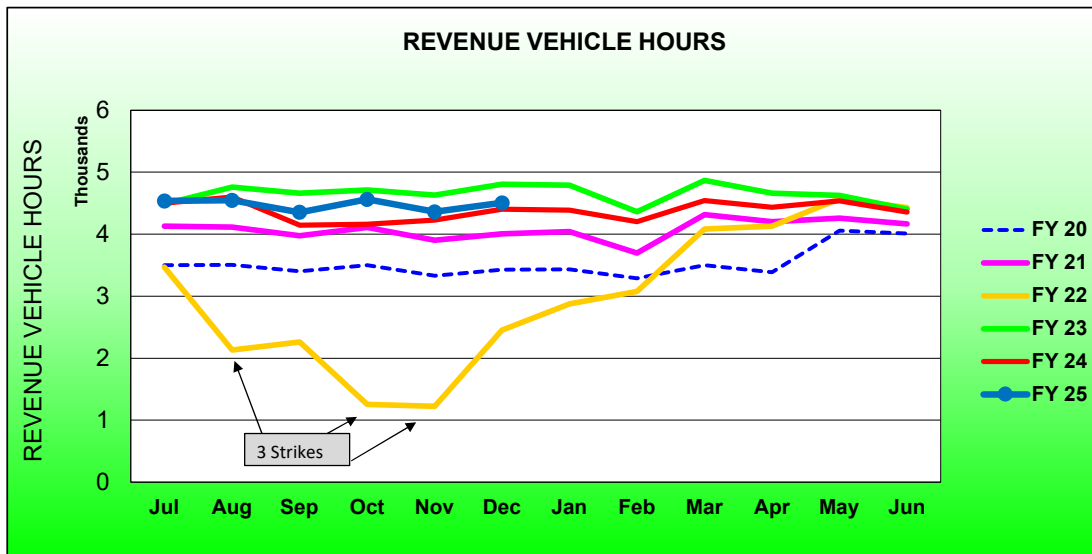
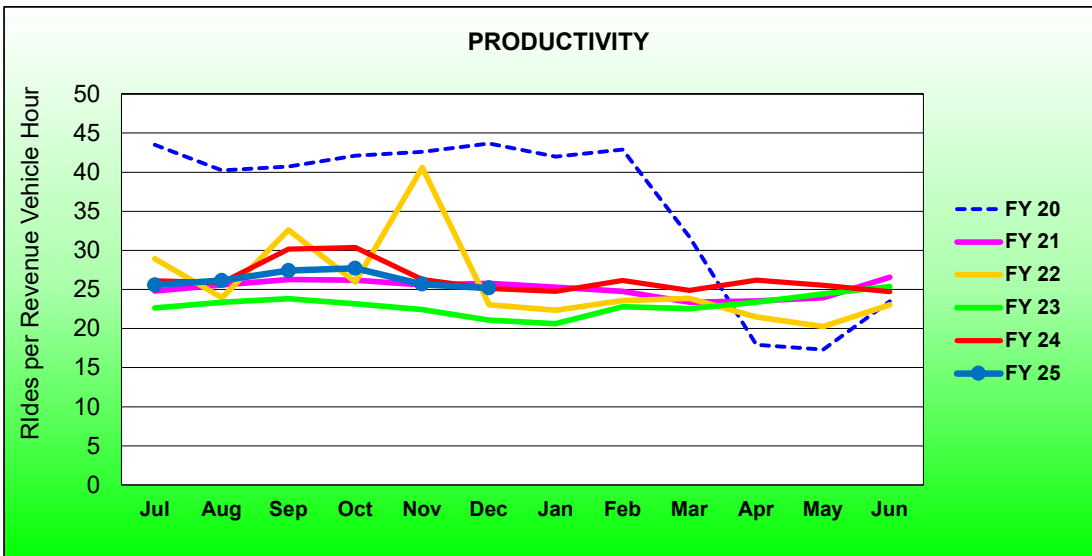
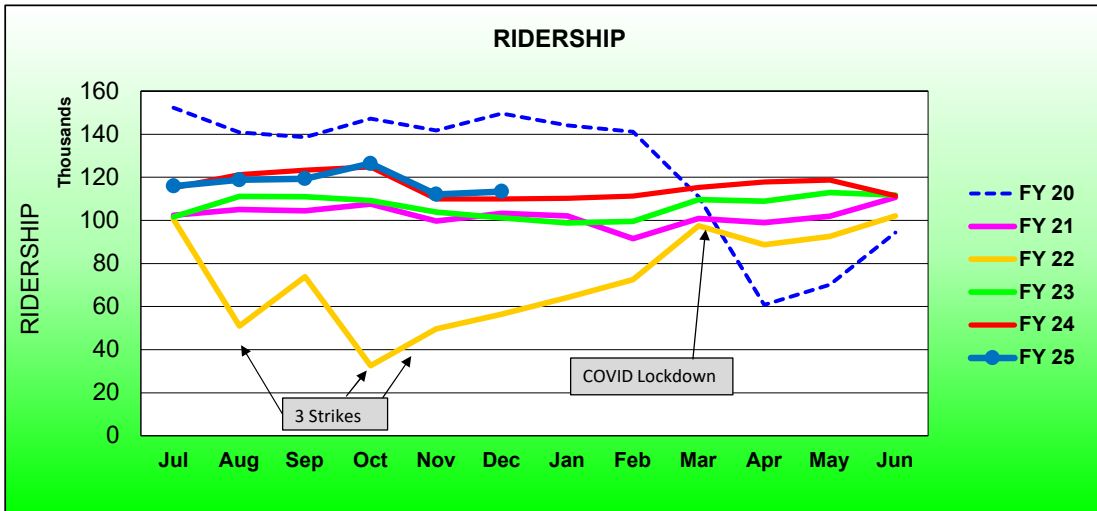
* - Reduced fare includes Youth, Senior, Disabled, and US Veterans

RTC Transit Operating Statistics

RTC RAPID Virginia Line and Route 1						
ROLLING 12-MONTH COMPARISON						
Most Recent 12 Months			Percent Change	Previous 12 Months		
Month	Year	Ridership		Month	Year	Ridership
Jan	2024	110,229	11.6%	Jan	2023	98,740
Feb		111,239	11.8%	Feb		99,491
March		115,379	5.2%	March		109,639
Apr		117,811	8.1%	Apr		108,968
May		118,653	5.1%	May		112,931
Jun		111,479	-0.2%	Jun		111,746
Jul		115,958	0.7%	Jul		115,149
Aug		118,809	-2.0%	Aug		121,197
Sep		119,329	-3.2%	Sep		123,298
Oct		126,372	1.3%	Oct		124,715
Nov		111,991	1.9%	Nov		109,893
Dec		113,334	3.1%	Dec		109,966
TOTAL		1,390,583	3.3%	TOTAL		1,345,733

* - Strikes occurred Aug 3-13, Sep 27-Oct 20, Nov 9-Dec 3, 2021

RTC RAPID Virginia Line and Route 1 Fiscal Year Comparisons



RTC RAPID Lincoln Line and Route 11						
Rolling 12-Month Comparison						
Most Recent 12 Months			Percent Change	Previous 12 Months		
Month	Year	Ridership		Month	Year	Ridership
Jan	2024	82,348	37%	Jan	2023	60,272
Feb		81,020	43%	Feb		56,669
Mar		86,512	34%	Mar		64,370
Apr		90,650	43%	Apr		63,439
May		94,524	27%	May		74,197
Jun		91,699	20%	Jun		76,479
Jul		97,939	21%	Jul		81,268
Aug		105,967	24%	Aug		85,588
Sep		100,874	17%	Sep		86,016
Oct		104,465	21%	Oct		86,638
Nov		94,528	23%	Nov		76,791
Dec		94,246	21%	Dec		77,855
TOTAL		1,124,772	26%	TOTAL		889,582

RTC Transit Operating Statistics

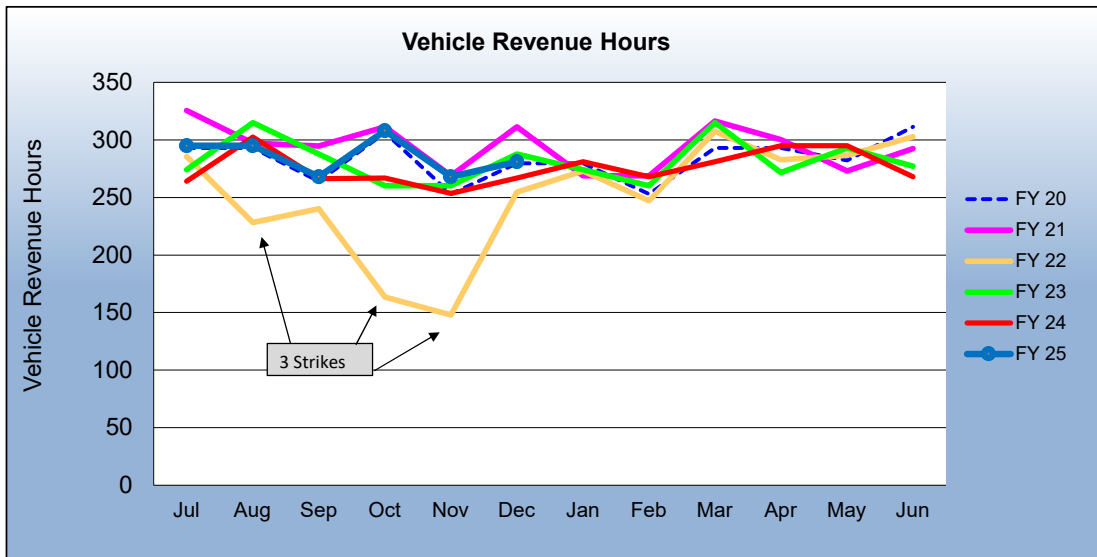
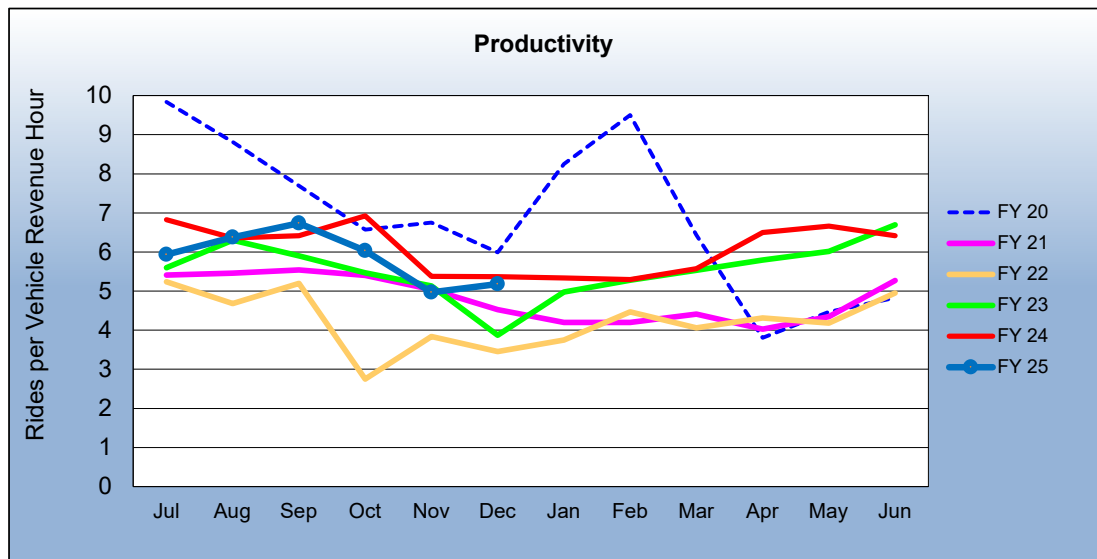
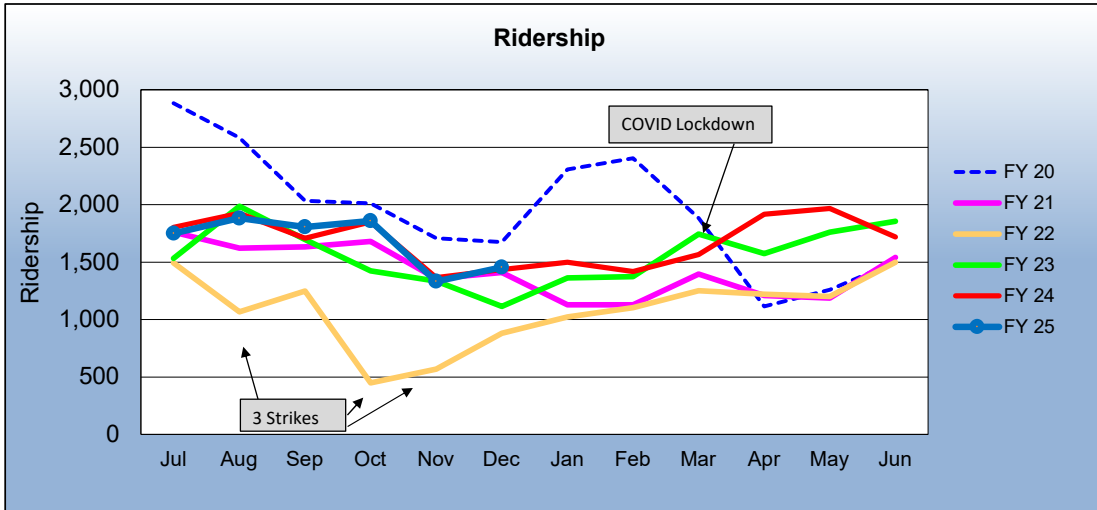
RTC RAPID Virginia & Lincoln Lines						
ROLLING 12-MONTH COMPARISON						
Most Recent 12 Months			Percent Change	Previous 12 Months		
Month	Year	Ridership		Month	Year	Ridership
Jan	2024	111,384	17%	Jan	2023	94,823
Feb		111,895	17%	Feb		95,606
Mar		116,399	10%	Mar		105,699
Apr		120,299	14%	Apr		105,548
May		122,131	5.1%	May		116,256
Jun		113,689	-2.7%	Jun		116,866
Jul		117,265	-2.7%	Jul		120,564
Aug		121,538	-5.3%	Aug		128,312
Sep		122,911	-3.4%	Sep		127,255
Oct		129,927	2.0%	Oct		127,380
Nov		117,096	4.8%	Nov		111,741
Dec		118,408	5.6%	Dec		112,141
TOTAL		1,422,942	4.5%	TOTAL		1,362,191

* - Strikes occurred Aug 3-13, Sep 27-Oct 20, Nov 9-Dec 3, 2021

RTC REGIONAL CONNECTOR - Carson Line						
Rolling 12 Month Comparison						
Most Recent 12 Months			Percent Change	Previous 12 Months		
Month	Year	Ridership		Month	Year	Ridership
Jan	2024	1,500	10.0%	Jan	2023	1,364
Feb		1,419	3.3%	Feb		1,374
Mar		1,567	-10.1%	Mar		1,743
Apr		1,916	21.7%	Apr		1,575
May		1,965	11.5%	May		1,762
Jun		1,720	-7.3%	Jun		1,855
Jul		1,751	-2.8%	Jul		1,802
Aug		1,882	-2.2%	Aug		1,924
Sep		1,806	5.7%	Sep		1,708
Oct		1,859	0.5%	Oct		1,849
Nov		1,332	-2.4%	Nov		1,365
Dec		1,456	1.5%	Dec		1,434
TOTAL		20,173	2.1%	TOTAL		19,755

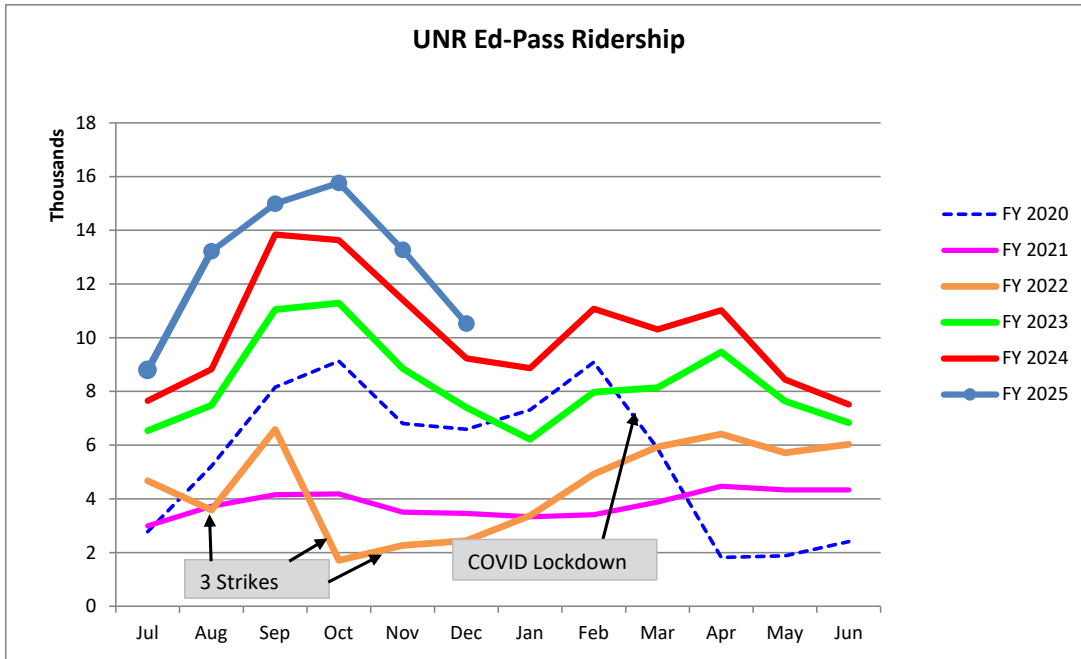
* - Strikes occurred Aug 3-13, Sep 27-Oct 20, Nov 9-Dec 3, 2021

RTC REGIONAL CONNECTOR Carson Line Fiscal Year Comparisons



**RTC Transit Fixed Route Bus Ridership Report
University of Nevada, Reno Ed-Pass Program
FY 2024**

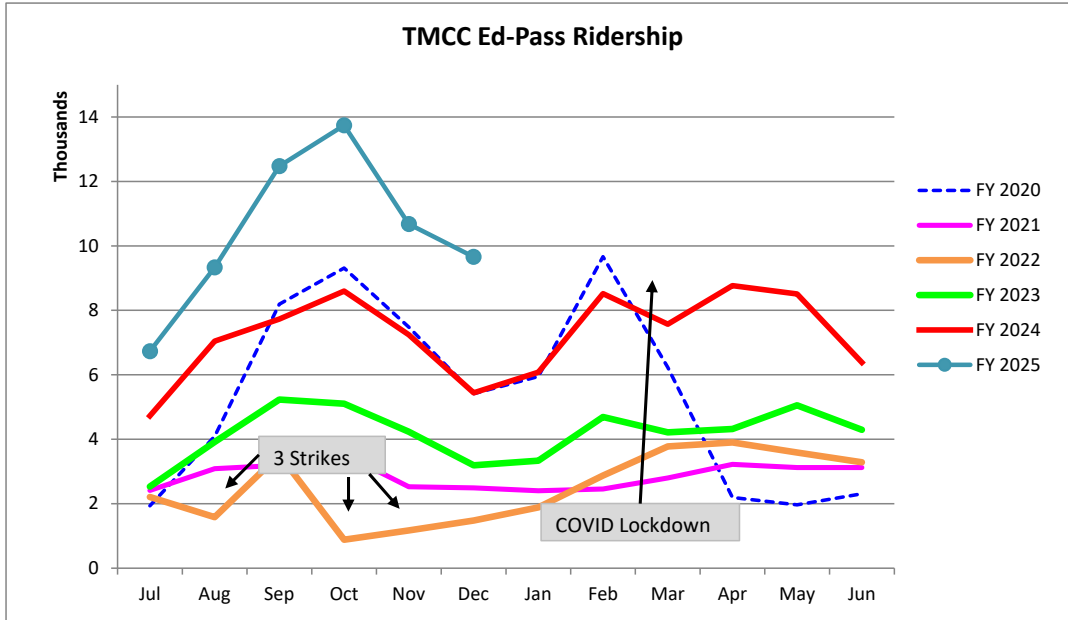
Category	Jul	Aug	Sep	Oct	Nov	Dec	Jan	Feb	Mar	Apr	May	Jun	FYTD
FY 2020	2,779	5,218	8,159	9,127	6,808	6,592	7,312	9,084	5,873	1,818	1,877	2,410	67,057
FY 2021	2,991	3,723	4,156	4,185	3,502	3,455	3,329	3,409	3,881	4,471	4,333	4,330	45,765
FY 2022	4,670	3,581	6,584	1,710	2,264	2,447	3,376	4,924	5,936	6,410	5,716	6,033	53,651
FY 2023	6,539	7,482	11,046	11,291	8,857	7,399	6,215	7,973	8,138	9,470	7,640	6,833	98,883
FY 2024	7,650	8,824	13,841	13,631	11,414	9,231	8,864	11,077	10,309	11,024	8,445	7,516	121,826
Percent Change	15%	50%	8.3%	16%	16%	14%							
FY 2025	8,797	13,215	14,988	15,763	13,269	10,523							



Fiscal Year	Rides
FY 2003	51,228
FY 2004	55,114
FY 2005	69,685
FY 2006	88,070
FY 2007	85,295
FY 2008	86,461
FY 2009	88,385
FY 2010	79,518
FY 2011	75,925
FY 2012	75,300
FY 2013	50,438
FY 2014	40,854
FY 2015	41,778
FY 2016	50,022
FY 2017	40,581
FY 2018	34,154
FY 2019	30,251
U-Pass:	
FY 2020	67,057
FY 2021	45,765
FY 2022	53,651
FY 2023	98,883
FY 2024	121,826

**RTC Transit Fixed Route Bus Ridership Report
Truckee Meadows Community Ed-Pass Program
FY 2024**

Category	Jul	Aug	Sep	Oct	Nov	Dec	Jan	Feb	Mar	Apr	May	Jun	FYTD
FY 2020	1,933	4,086	8,193	9,311	7,479	5,413	5,945	9,668	6,227	2,193	1,968	2,310	64,726
FY 2021	2,414	3,090	3,194	3,535	2,527	2,493	2,402	2,459	2,800	3,225	3,126	3,124	34,389
FY 2022	2,208	1,584	3,516	883	1,170	1,480	1,886	2,875	3,773	3,899	3,585	3,287	30,146
FY 2023	2,533	3,913	5,233	5,103	4,231	3,195	3,335	4,690	4,213	4,314	5,051	4,292	50,103
FY 2024	4,725	7,045	7,727	8,596	7,244	5,440	6,081	8,520	7,569	8,768	8,510	6,384	86,609
Percent Change	43%	32%	61%	60%	47%	78%							
FY 2025	6,734	9,334	12,476	13,741	10,681	9,659							



Fiscal Year	Rides
FY 2013	90,583
FY 2014	113,700
FY 2015	94,112
FY 2016	83,375
FY 2017	66,110
FY 2018	53,027
FY 2019	37,191

Ed-Pass:	Rides
FY 2020	64,726
FY 2021	34,389
FY 2022	30,146
FY 2023	50,103
FY 2024	86,609