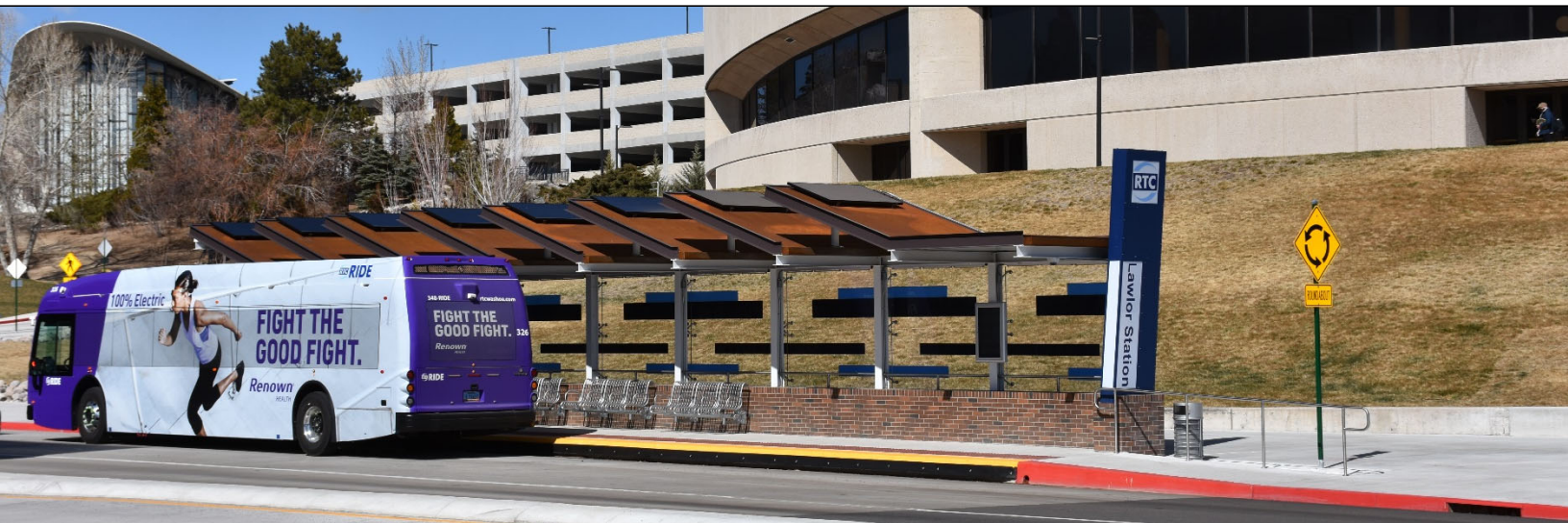




REGIONAL TRANSPORTATION COMMISSION
Public Transportation • Streets and Highways • Planning



RTC Transit Fixed Route Bus Operating Statistics

**RTC RIDE
RTC RAPID
RTC REGIONAL CONNECTOR**

January 2025

RTC Transit Fixed Route Bus Operating Statistics Report

TABLE OF CONTENTS

RTC Transit Fixed Route Bus Highlights.....	Page ii
RTC Transit Fixed Route Bus Summary	Page iv
System Reports.....	Page 1
Economic Data	Page 5
Route Comparison Data.....	Page 7
Monthly Operating Statistics.....	Page 9
RTC RAPID Virginia Line & Route 1	Page 14
RTC RAPID Lincoln Line & Route 11	Page 16
RTC REGIONAL CONNECTOR Carson Line	Page 18
RTC TMCC and UNR Education Pass.....	Page 20

RTC Transit Fixed Route Bus Highlights

January 2025

RTC Transit Fixed Route Bus

- For the month of January, there were 481,095 rides, **up 15.6%** compared with last year (page 1). The weighted average daily ridership was 16,546, **up 16%** compared with last year (page 3).
- For the most recent 12 months, there were 5.65 million rides **up 10.6%** compared with the previous 12 months.
- In January, there were 22,499 service hours, **up 1.7%** compared with last year (page 9).
- Productivity was 21.4 rides per service hour, **up 13.6%** compared with last year (page 9).

External Impacts on Ridership

- The average temperature this month was 35.5° F, 4.4° F lower compared with last year.
- The Reno-Sparks area preliminary unemployment rate in December was 4.5%. Unemployment has been gradually trending upward since a low of 2.8% in January 2021.
- Nevada's preliminary unemployment rate for December was 5.7%. The national unemployment rate for October was 4.0%.

Historical Impacts Causing a Downward Trend in Bus Ridership

- According to the Bureau of Labor Statistics, 27% of US employees worked remotely at least part of the time in 2023, with several academic surveys suggesting it is closer to 50%*.
- In April 2022, the City of Reno entered an agreement with Bird electric scooters to serve Reno.
- In 2021, Keolis transit workers went on strike August 3 to 13, September 27 to October 20, and November 9 to December 3. Limited service was provided on Routes 1, 7, and 11 and RTC REGIONAL CONNECTOR to Carson City. RTC provided free rides on RIDE, FlexRIDE, taxis, and UberX during the second and third strikes.
- A combination of the pandemic, stimulus checks, easy car financing, and gig jobs requiring cars has likely resulted in a large number of people abandoning transit for car ownership.
- In response to the COVID-19 pandemic, Governor Sisolak ordered the shutdown of casinos and other nonessential businesses in March 2020. In May 2020, Governor Sisolak reopened a number of businesses including bars, salons, gyms, and retail. Casinos were allowed to reopen in June 2020. In May 2021, maximum business capacity increased to 100% in Washoe County.
- There has been an increase in people working primarily from home, approximately eight million in 2018 according to US Census Bureau estimates, taking over transit as the second most common means of getting to work.
- While employment has increased in the region, the makeup of local employment has significantly changed. When Reno was a tourism and gaming town, a large portion of employment was in the low-wage, service industry whereas recently jobs tend to be higher wage and geographically dispersed requiring cars.
- Uber started permanent service in Reno in 2015 and Lyft started shortly after.
- As of 2014, Nevada provides driver's licenses for people who are undocumented immigrants.
- As downtown and midtown areas in-fill and gentrify, this also pushes lower income people to the suburbs where they are much more likely to need cars. This is a nationwide trend.
- The drop in ridership (before COVID) has been a nationwide trend as illustrated by the chart on page 4 which compares RTC transit ridership with US and Canadian bus ridership.
- With the growth of online shopping and food delivery, it is also likely that bus trips used for shopping and dining out has fallen substantially, especially for those with mobility challenges who would prefer online shopping and food delivery. Also, people without cars may decide to purchase a car with the intention of using the car to deliver food and finance the car.

* - <https://www.forbes.com/sites/forbesfinancecouncil/2023/11/06/changing-environment-altering-employer-obligations-for-remote-workers/?sh=7c9e531e2145>



RTC Transit Fixed Route Bus Summary

Route Ridership

- For January, Route 18 (serving Glendale) had the highest productivity with 27.1 rides per service hour.
- Route 1 (serving S Virginia St between downtown Reno and Meadowood Mall) came in second with 25.4.
- Route 2 (serving Ninth/Centennial Plaza) had the third highest productivity in the system with 24.0 rides per service hour (page 7).
- Route 16 (serving Idlewild) ridership had the highest increase compared with last year by 46.0%.
- Route 11 had the highest increase in ridership at 27.9%. In May 2023, Routes 3 and 26 were eliminated with Route 11 absorbing parts of Routes 3 and 26.
- Route 21 (Sparks Marina) had the third highest increase in ridership at 26.8%.

RTC RAPID (Virginia & Lincoln Lines Combined)

- This month, there were 120,884 rides on RTC RAPID **up 8.5%** compared with last year. By comparison, system ridership was up 15.6%. The productivity of RTC RAPID at 25.6 rides per service hour was **up 2.0%** compared with last year. By comparison, system productivity was 21.4 rides per service hour, **up 13.6%** compared with last year.
- There were 1.43 million rides over the most recent 12 months, **up 3.9%** compared with the previous 12 months.
- RAPID rides now make up 25.1% of system ridership.
- 44.6% of all system rides were taken on RAPID and Routes 1 and 11.

RTC RAPID Virginia Line

- This month, there were 81,347 rides on the Virginia Line **up 7.0%** compared with last year. Productivity at 25.4 rides per service hour is **up 2.6%** compared with last year.
- Ridership for both the Virginia Line and Route 1 was 114,436 **up 3.8%** compared with last year (page 14). There were 1.39 million rides over the most recent 12 months, **up 2.8%** compared with the previous 12 months.

RTC RAPID Lincoln Line

- This month, there were 39,537 rides on the Lincoln Line **up 13%** compared with last year. Productivity at 26.0 rides per service hour is **up 11%** compared with last year.
- Ridership for both the Lincoln Line and Route 11 was 100,102 **up 22%** compared with last year (page 16). There were 1.14 million rides for the most recent 12 months, **up 25%** compared with the previous 12 months.

RTC REGIONAL CONNECTOR Carson Line

- There were 1,636 rides this month, **up 9.1%** compared with last January (page 18). At 5.8 rides per service hour, productivity is **up 9.1%** compared to last year. There were 20,309 rides for the most recent 12 months, **up 2.1 %** compared with the previous 12 months.

RTC TMCC and UNR Education Pass

- There were 12,336 UNR Ed-Pass rides, **up 39%** compared with last year (page 20).
- There were 9,785 TMCC Ed-Pass rides, **up 61%** compared with last year.

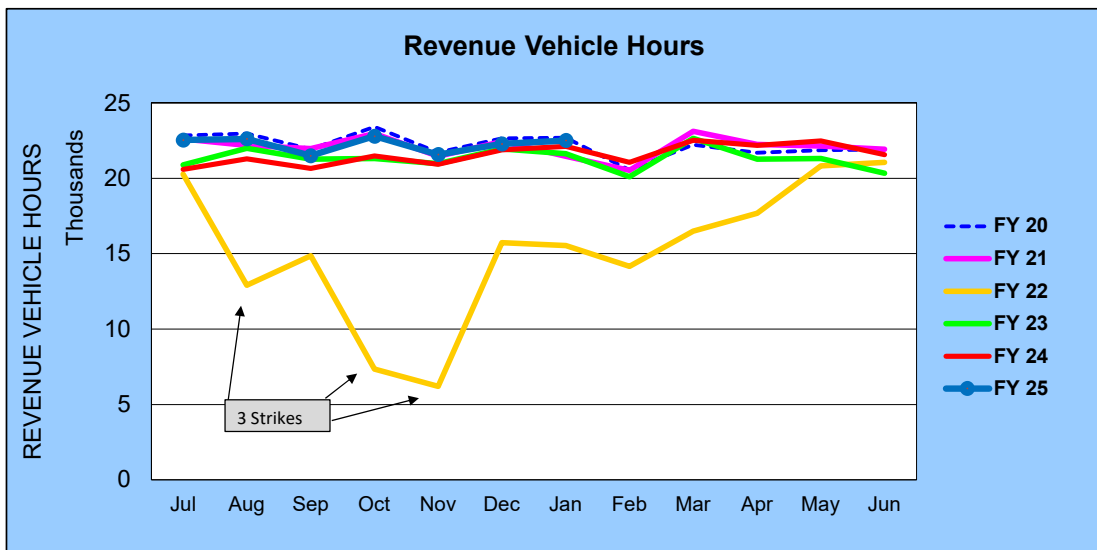
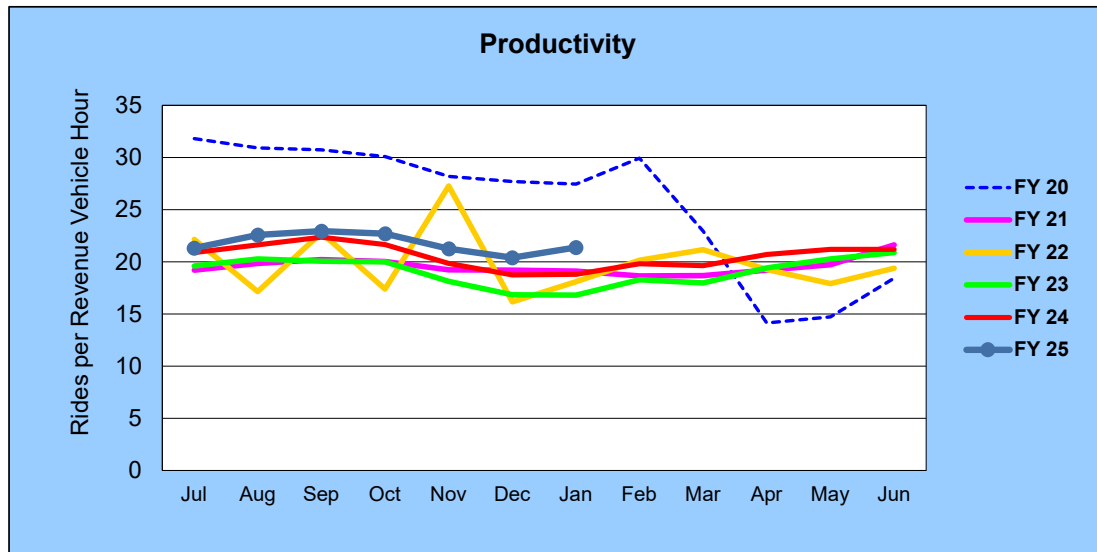
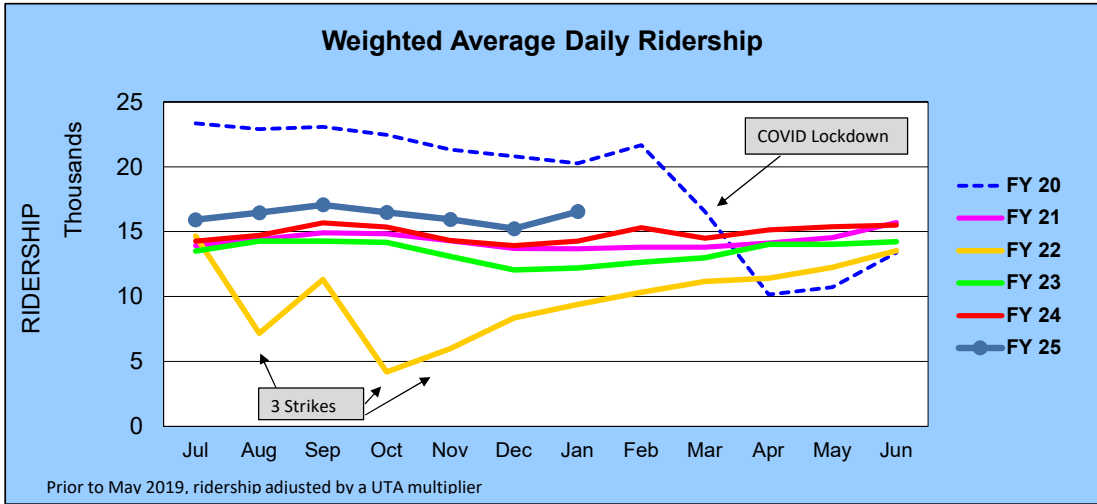
RTC Transit Operating Statistics

RTC Transit Fixed Route Bus						
Rolling 12-Month Ridership Comparison						
Most Recent 12 Months			Percent Change	Previous 12 Months		
Month	Year	Ridership		Month	Year	Ridership
Feb	2024	417,018	13.5%	Feb	2023	367,575
Mar		442,102	8.6%	Mar		407,074
Apr		459,351	11.3%	Apr		412,674
May		476,695	10.3%	May		432,170
Jun		456,808	7.5%	Jun		425,106
Jul		480,395	11.8%	Jul		429,718
Aug		510,365	10.9%	Aug		460,384
Sep		493,117	6.8%	Sep		461,670
Oct		516,977	11.1%	Oct		465,243
Nov		458,480	10.3%	Nov		415,646
Dec		454,469	10.8%	Dec		410,240
Jan	2025	481,095	15.6%	Jan	2024	416,157
TOTAL		5,646,872	10.6%	TOTAL		5,103,657

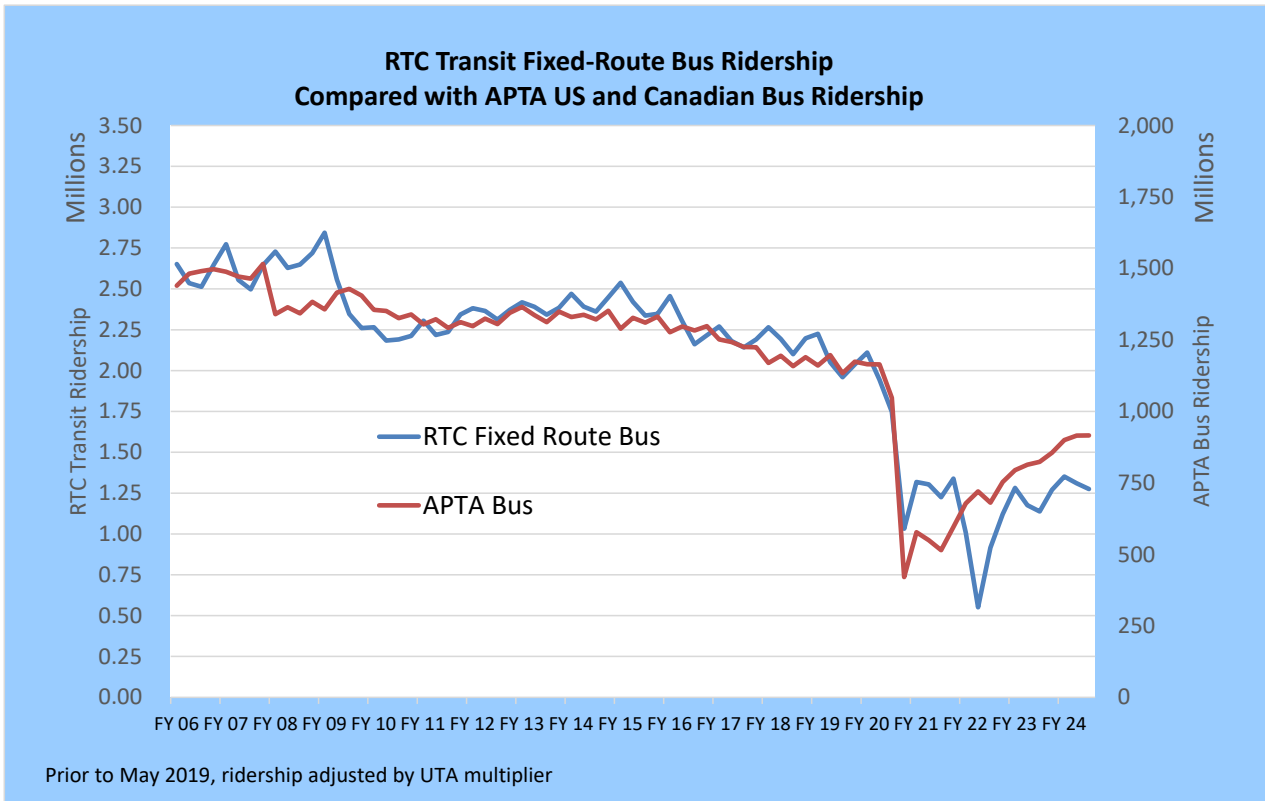
RTC Transit includes RTC RIDE, RTC RAPID, & RTC REGIONAL CONNECTOR

RTC Transit Fixed Route Bus

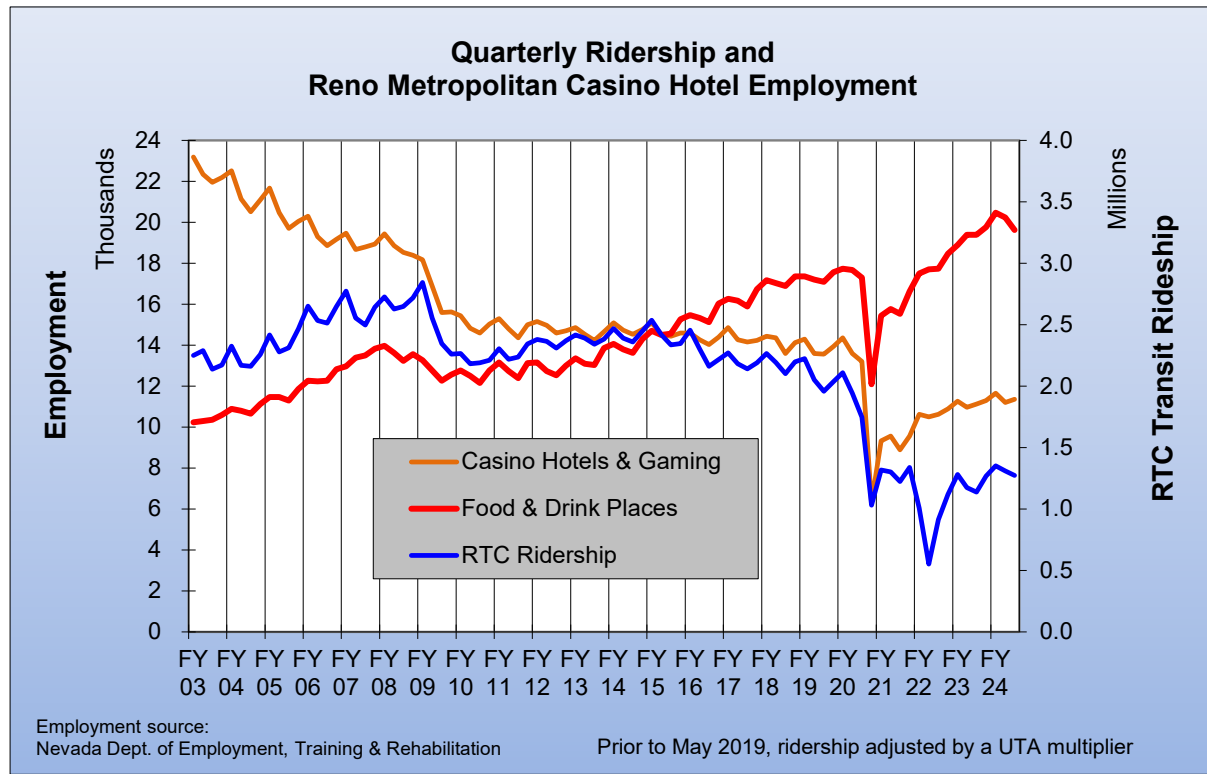
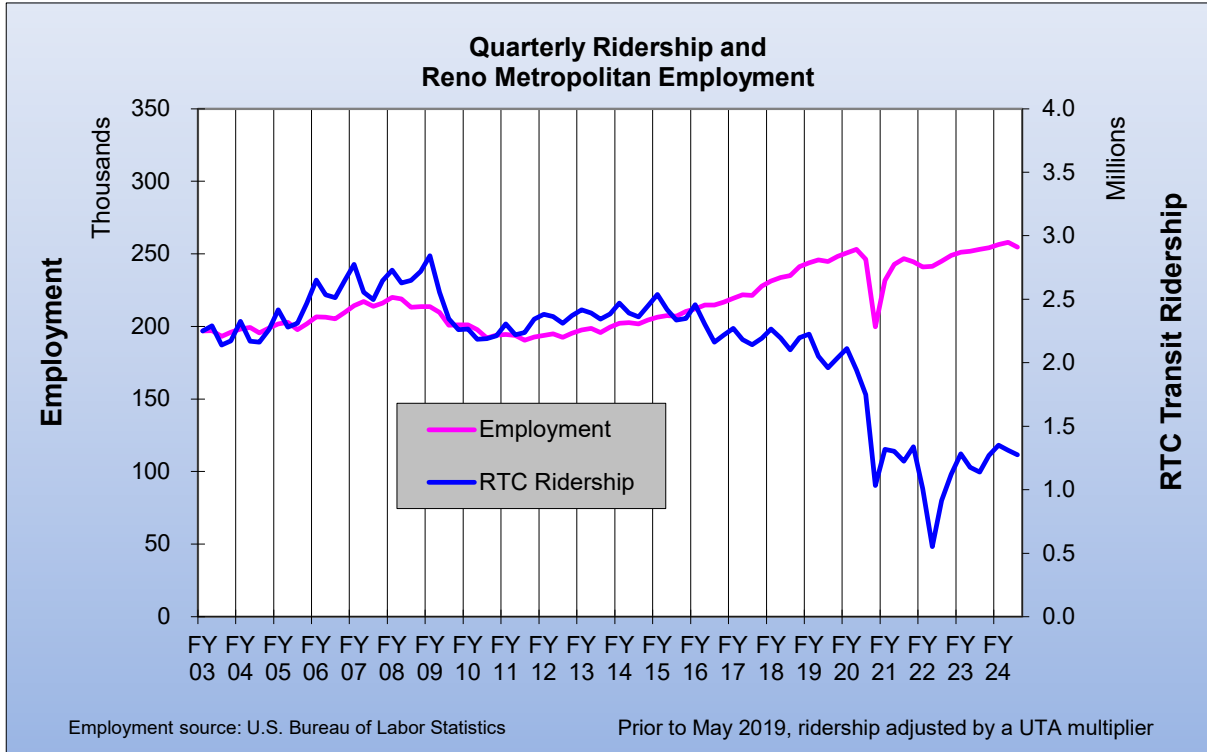
FISCAL YEAR COMPARISONS



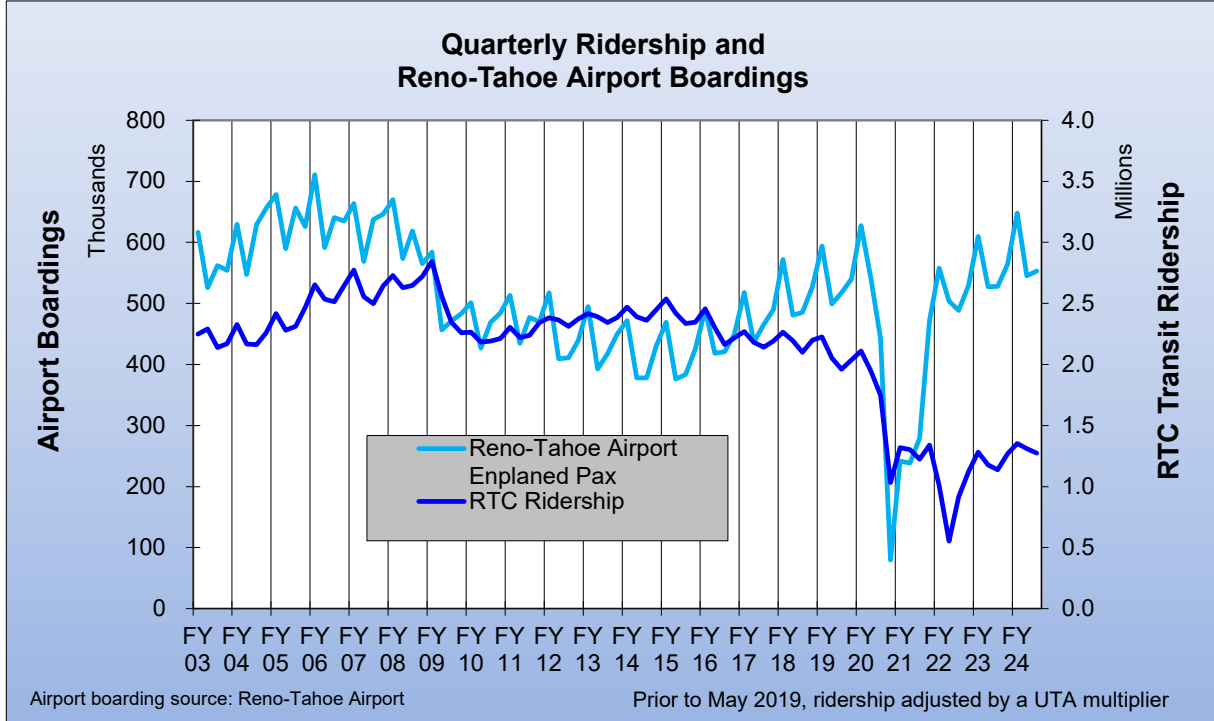
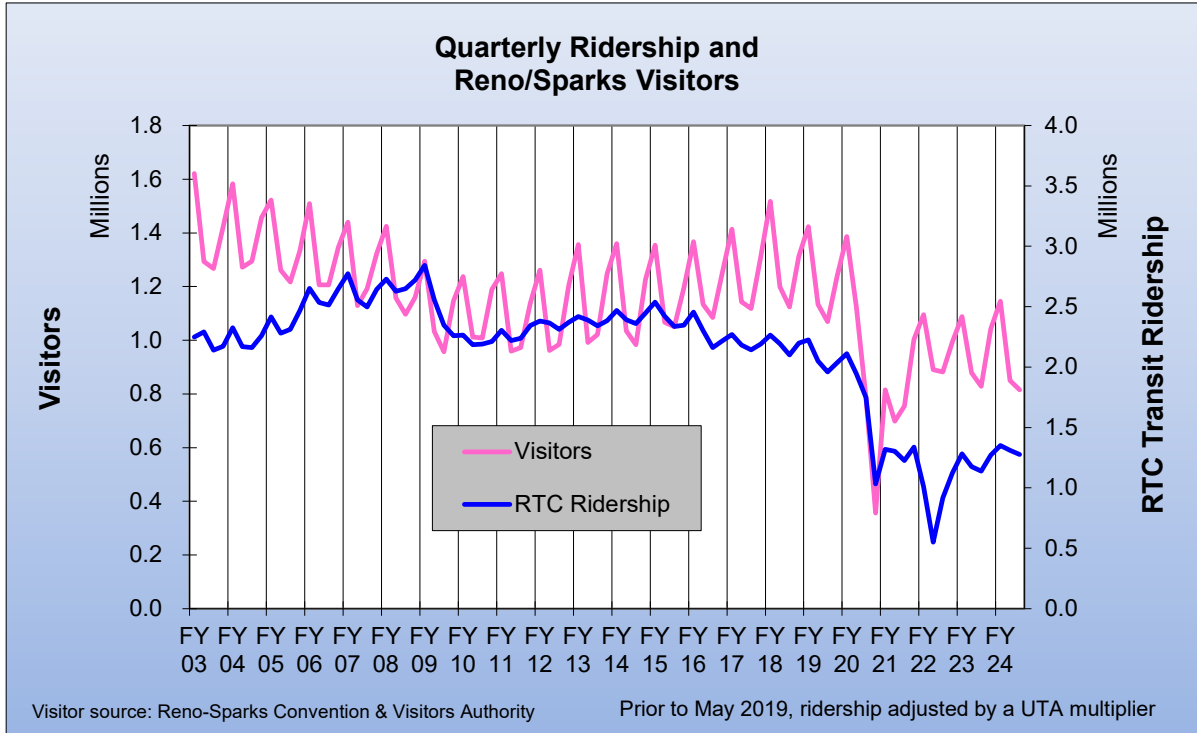
RTC Transit Fixed-Route Bus						
Weighted Average Daily Ridership						
Rolling 12-Month Ridership Comparison						
Most Recent 12 Months			Percent Change	Previous 12 Months		
Month	Year	Ridership		Month	Year	Ridership
Feb	2024	15,294	21.0%	Feb	2023	12,638
March		14,500	11.7%	March		12,981
Apr		15,129	7.9%	Apr		14,016
May		15,373	9.7%	May		14,008
Jun		16,157	13.6%	Jun		14,227
Jul		15,924	11.7%	Jul		14,257
Aug		16,462	12.0%	Aug		14,698
Sep		17,068	8.9%	Sep		15,675
Oct		16,494	7.4%	Oct		15,353
Nov		15,951	11.4%	Nov		14,320
Dec		15,235	9.4%	Dec		13,931
Jan	2025	16,546	16.0%	Jan	2024	14,262



RTC Transit Fixed-Route Bus



RTC Transit Fixed-Route Bus



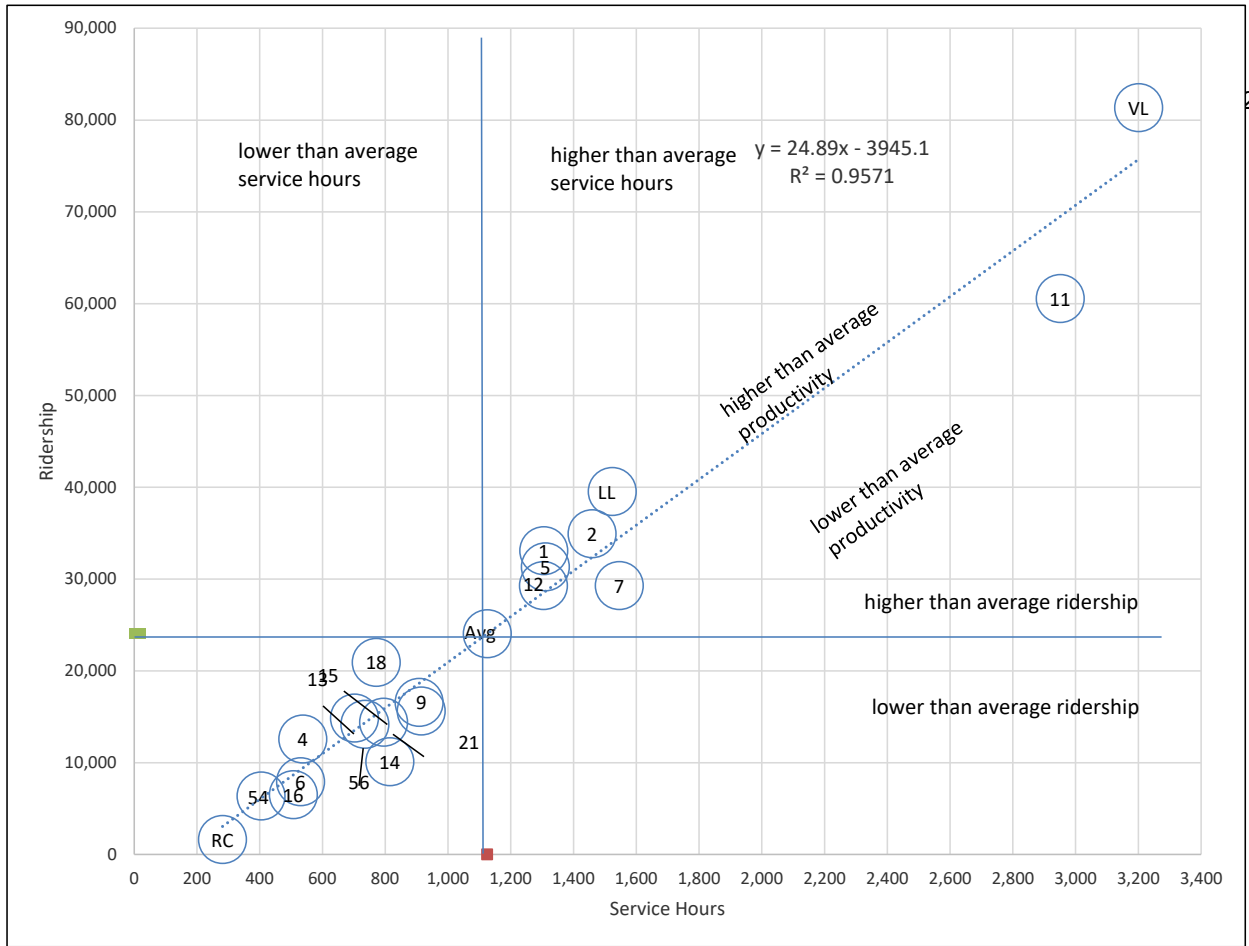
RTC Route Comparison Report

Jan 2025

Route *	Productivity	Route	Svs Hours Change Fr. Last Year	Route	Ridership	Route	Ridership Change From Last Year
18	27.1	5	9.7%	RAP VL	81,347	16	46.0%
RAP LL	26.0	21	9.2%	11	60,565	11	27.9%
RAP VL	25.4	7	5.5%	RAP LL	39,537	21	26.8%
1	25.4	RAP VL	3.8%	2	34,946	12	26.1%
2	24.0	2	2.1%	1	33,089	5	23.0%
5	23.9	RAP LL	1.8%	5	31,325	56	22.3%
4	23.4	TOTAL	1.7%	7	29,290	2	21.1%
12	22.5	13	1.2%	12	29,287	13	20.0%
TOTAL	21.4	14	1.0%	18	20,924	9	19.1%
13	21.2	9	0.9%	9	16,568	7	18.8%
11	20.5	15	0.7%	21	15,631	14	17.9%
56	19.3	6	0.6%	13	14,868	6	17.4%
7	18.9	56	0.4%	15	14,408	54	17.2%
9	18.3	18	0.4%	56	14,189	TOTAL	15.6%
15	18.1	54	0.2%	4	12,574	RAP LL	12.9%
21	17.1	4	0.2%	14	10,105	RTC RC	9.1%
54	15.8	16	0.0%	6	7,926	15	9.0%
6	15.0	RTC RC	0.0%	16	6,509	4	7.4%
16	12.8	1	-0.1%	54	6,371	18	7.3%
14	12.4	12	-0.2%	RTC RC	1,636	RAP VL	6.5%
RTC RC	5.8	11	-3.3%	TOTAL	481,095	1	-2.3%

* - RTC RC is RTC REGIONAL CONNECTOR.

RTC Route Comparison Chart Jan 2025



2924

"higher" and "lower" refer to higher or lower than the average of all routes (not the system average)

RTC TRANSIT OPERATING STATISTICS

Jan 2025

Route	Total Ridership	Previous Year	Change	Vehicle Revenue Hours	Previous Year	Change	Rides/VRH	Previous Year	Change
RAPID VL	81,347	76,375	7%	3,201	3,083	4%	25.4	24.8	2.6%
RAPID LL	39,537	35,009	13%	1,523	1,496	2%	26.0	23.4	11%
1	33,089	33,854	-2.3%	1,305	1,306	0%	25.4	25.9	-2.2%
2	34,946	28,851	21%	1,459	1,428	2%	24.0	20.2	19%
4	12,574	11,711	7%	537	536	0%	23.4	21.8	7.2%
5	31,325	25,472	23%	1,310	1,194	10%	23.9	21.3	12%
6	7,926	6,754	17%	530	527	1%	15.0	12.8	17%
7	29,290	24,651	19%	1,546	1,465	5%	18.9	16.8	13%
9	16,568	13,910	19%	908	900	1%	18.3	15.5	18%
11	60,565	47,339	28%	2,951	3,053	-3%	20.5	15.5	32%
12	29,287	23,224	26%	1,304	1,307	0%	22.5	17.8	26%
13	14,868	12,393	20%	702	694	1%	21.2	17.9	19%
14	10,105	8,569	18%	814	806	1%	12.4	10.6	17%
15	14,408	13,214	9%	795	790	1%	18.1	16.7	8.3%
16	6,509	4,458	46%	507	507	0%	12.8	8.8	46%
18	20,924	19,499	7.3%	771	768	0%	27.1	25.4	6.9%
21	15,631	12,332	27%	914	837	9%	17.1	14.7	16%
54	6,371	5,437	17%	404	403	0%	15.8	13.5	17%
56	14,189	11,605	22%	735	732	0%	19.3	15.8	22%
RC Carson	1,636	1,500	9.1%	281	281	0%	5.8	5.3	9.1%
Misc. Service		0	N/A	0	0	N/A			
Jan 2025	481,095	416,157	15.6%	22,499	22,115	1.7%	21.4	18.8	13.6%
Jan '24	416,157			22,115			18.8		
Perc. Change	15.6%			1.7%			13.6%		

RTC TRANSIT OPERATING STATISTICS

Jan 2025

Route	Vehicle Revenue Miles	Rides/VRM	Est. Gross Operating Cost	Est. Cost Per VRH	Est. Cost Per VRM	Est. Cost Per Ride
RAPID VL	33,140	2.45	\$527,613	\$165	\$15.92	\$6.49
RAPID LL	14,693	2.69	\$251,109	\$165	\$17.09	\$6.35
1	12,936	2.56	\$215,151	\$165	\$16.63	\$6.50
2	15,298	2.28	\$240,522	\$165	\$15.72	\$6.88
4	6,962	1.81	\$88,557	\$165	\$12.72	\$7.04
5	16,068	1.95	\$216,000	\$165	\$13.44	\$6.90
6	4,910	1.61	\$87,371	\$165	\$17.79	\$11.02
7	26,596	1.10	\$254,801	\$165	\$9.58	\$8.70
9	10,235	1.62	\$149,632	\$165	\$14.62	\$9.03
11	31,237	1.94	\$486,480	\$165	\$15.57	\$8.03
12	13,187	2.22	\$215,003	\$165	\$16.30	\$7.34
13	6,474	2.30	\$115,750	\$165	\$17.88	\$7.79
14	7,847	1.29	\$134,250	\$165	\$17.11	\$13.29
15	8,184	1.76	\$131,025	\$165	\$16.01	\$9.09
16	3,510	1.85	\$83,566	\$165	\$23.81	\$12.84
18	8,385	2.50	\$127,174	\$165	\$15.17	\$6.08
21	9,994	1.56	\$150,725	\$165	\$15.08	\$9.64
54	6,492	0.98	\$66,657	\$165	\$10.27	\$10.46
56	10,836	1.31	\$121,212	\$165	\$11.19	\$8.54
RC Carson	8,457	0.19	\$46,389	\$165	\$5.49	\$28.36
Misc. Service	0					
Jan 2025	255,441	1.88	\$3,708,984	\$165	\$14.52	\$7.71
Jan '24	247,355	1.68	\$3,491,098	\$158	\$14.11	\$8.39
Perc. Change	3.3%	11.9%	6.2%	4.4%	2.9%	-8.1%

RTC Transit Operating Statistics

Feb'24 - Jan '25

Route	Total Ridership	Previous Year	Change	Vehicle Revenue Hours	Previous Year	Change	Rides/VRH	Previous Year	Change
RAPID VL	978,387	933,972	5%	38,032	37,247	2%	25.7	25.1	3%
RAPID LL	454,055	444,780	2%	18,072	17,712	2%	25.1	25.1	0%
1	416,403	423,250	-2%	15,400	16,107	-4%	27.0	26.3	3%
2	398,749	363,832	10%	17,243	17,267	0%	23.1	21.1	10%
4	150,336	140,988	7%	6,359	6,407	-1%	23.6	22.0	7%
5	362,466	334,608	8%	14,462	14,217	2%	25.1	23.5	6%
6	91,778	78,778	17%	6,271	6,102	3%	14.6	12.9	13%
7	365,074	322,250	13%	17,800	18,446	-4%	20.5	17.5	17%
9	199,435	168,693	18%	10,781	11,223	-4%	18.5	15.0	23%
11	688,471	466,878	47%	35,303	24,825	42%	19.5	18.8	4%
12	333,810	282,675	18%	15,499	14,037	10%	21.5	20.1	7%
13	171,748	146,421	17%	8,343	8,128	3%	20.6	18.0	14%
14	112,210	99,224	13%	9,682	9,199	5%	11.6	10.8	7%
15	179,330	156,636	14%	9,456	9,285	2%	19.0	16.9	12%
16	69,626	51,886	34%	6,011	5,585	8%	11.6	9.3	25%
18	244,038	253,166	-4%	9,211	9,385	-2%	26.5	27.0	-2%
21	178,636	155,684	15%	10,649	9,356	14%	16.8	16.6	1%
54	69,580	67,561	3%	4,787	5,076	-6%	14.5	13.3	9%
56	162,431	133,254	22%	8,767	7,753	13%	18.5	17.2	8%
RC Carson	20,309	19,891	2%	3,404	3,319	3%	6.0	6.0	0%
Misc. Service									
Current 12 Months	5,646,872	5,103,657	10.6%	265,530	254,584	4.3%	21.3	20.0	6.1%
Previous 12 Months	5,103,657			254,584			20.0		
Perc. Change	10.6%			4.3%			6.1%		

RTC Transit Operating Statistics

Feb'24 - Jan '25

Route	Vehicle Revenue Miles (thousand)	Rides/VRM	Est. Gross Operating Cost (thousand)	Est. Cost Per VRH	Est. Cost Per VRM	Est. Cost Per Ride
RAPID VL	383.5	2.55	\$6,160	\$162	\$16.06	\$6.30
RAPID LL	174.1	2.61	\$2,927	\$162	\$16.81	\$6.45
1	152.3	2.73	\$2,494	\$162	\$16.37	\$5.99
2	180.7	2.21	\$2,793	\$162	\$15.45	\$7.00
4	82.4	1.82	\$1,030	\$162	\$12.50	\$6.85
5	191.6	1.89	\$2,343	\$162	\$12.23	\$6.46
6	58.1	1.58	\$1,016	\$162	\$17.48	\$11.07
7	314.3	1.16	\$2,883	\$162	\$9.17	\$7.90
9	121.3	1.64	\$1,746	\$162	\$14.40	\$8.76
11	366.6	1.88	\$5,716	\$162	\$15.59	\$8.30
12	156.7	2.13	\$2,510	\$162	\$16.02	\$7.52
13	76.6	2.24	\$1,351	\$162	\$17.65	\$7.87
14	93.3	1.20	\$1,568	\$162	\$16.80	\$13.97
15	97.3	1.84	\$1,531	\$162	\$15.74	\$8.54
16	41.7	1.67	\$974	\$162	\$23.32	\$13.98
18	100.1	2.44	\$1,492	\$162	\$14.90	\$6.11
21	116.4	1.53	\$1,725	\$162	\$14.82	\$9.66
54	76.9	0.91	\$775	\$162	\$10.09	\$11.14
56	129.2	1.26	\$1,420	\$162	\$10.99	\$8.74
RC Carson	102.3	0.20	\$551	\$162	\$5.39	\$27.14
Misc. Service						
Current 12 Months	3,015.5	1.87	\$43,006	\$162	\$14.26	\$7.62
Previous 12 Months	2,868.8	1.78	\$39,098	\$154	\$13.63	\$7.66
Perc. Change	5.1%	5.3%	10.0%	5.5%	4.6%	-0.6%

January

Feb 2024 - Jan 2025

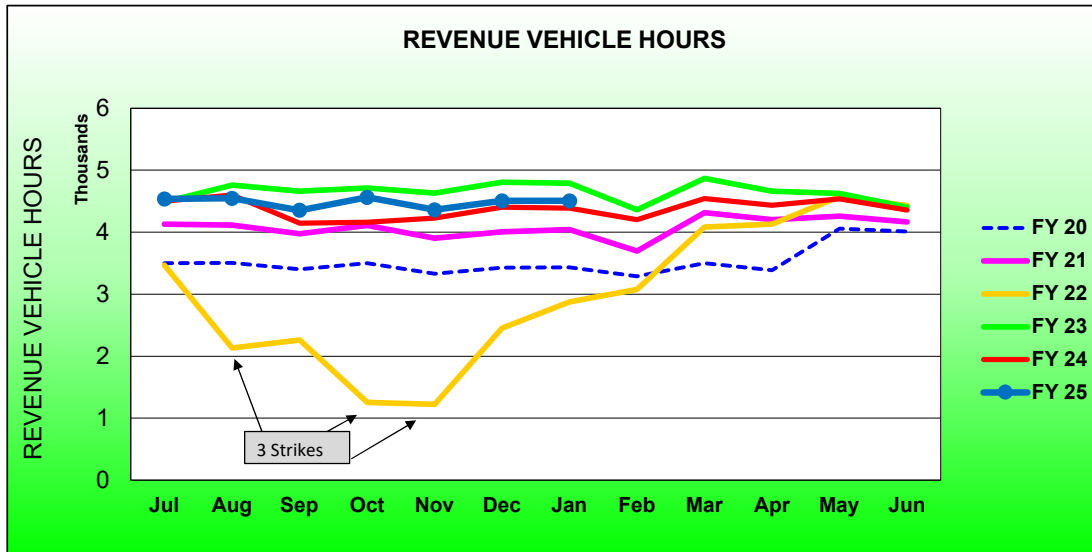
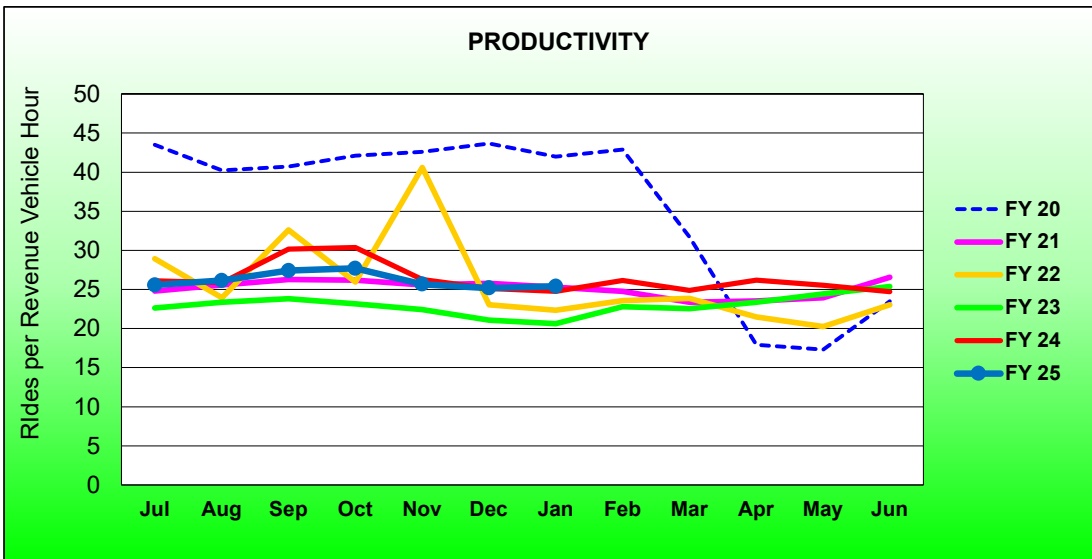
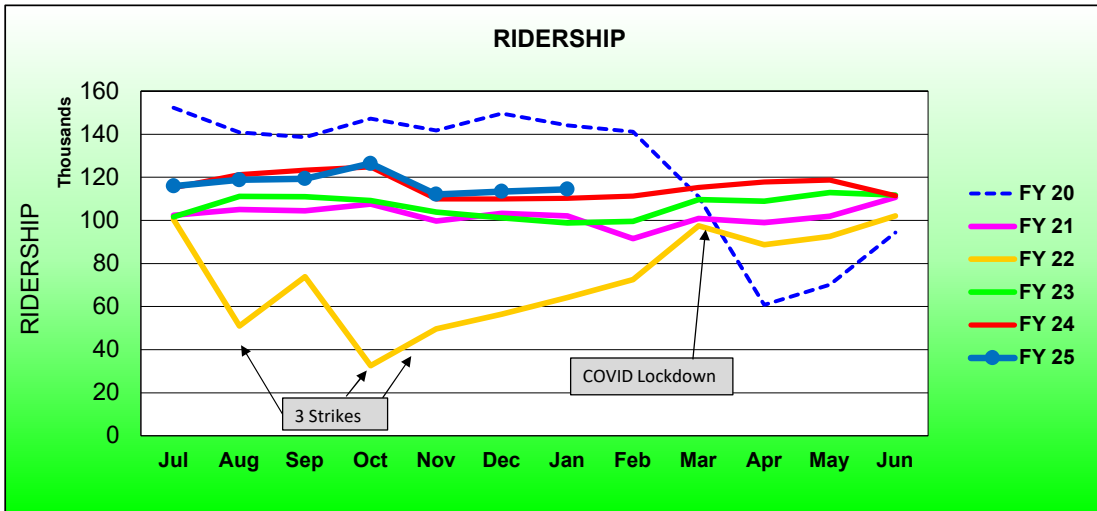
	2024	2023	Percent Change	Current 12 Months	Previous 12 Month	Percent Change
Single Ride Cash						
Full Fare	3,187	4,455	-28%	34,481	60,548	-43%
Reduced*	6,140	6,220	-1.3%	51,825	86,416	-40%
RTC ACCESS ID	157	313	-50%	2,840	4,027	-29%
Total	9,484	10,988	-14%	89,146	150,991	-41%
Day Pass Cash						
Full Fare	51,621	53,177	-2.9%	508,478	691,120	-26%
Reduced*	64,066	64,419	-0.5%	614,418	830,255	-26%
Total	115,687	117,596	-1.6%	1,122,896	1,521,375	-26%
Pre-Purchase Period Pass						
Full Fare	123,850	107,066	16%	1,073,425	1,277,807	-16%
Reduced*	171,397	136,656	25%	1,404,916	1,556,981	-10%
Total	295,247	243,722	21%	2,478,341	2,834,788	-13%
Transfers	228	343	-34%	2,649	2,501	6%
Flow Through	8,488	4,389	93%	50,308	62,459	-19%
Free Rides	27,042	20,894	29%	279,316	311,160	-10%
U/Ed-Pass Free Rides	22,121	14,942	48%	189,863	183,802	3.3%
Stored Ride Pass	2,798	3,277	-15%	29,597	36,575	-19%
Full Fare	194,773	177,350	9.8%	1,773,301	2,213,524	-20%
Reduced*	286,258	238,676	20%	2,478,090	2,888,746	-14%
Total Ridership	481,095	416,157	15.6%	5,646,872	5,103,657	10.6%
Previous 12 Months	416,157			5,103,657		
Change	15.6%			10.6%		
Vehicle Revenue Hours	22,499	22,115	1.7%	265,530	254,584	4.3%
Previous 12 Months	22,115			254,584		
Change	1.7%			4.3%		
Rides / VRH	21.4	18.8	13.6%	21.3	20.0	6.1%
Previous 12 Months	18.8			20.0		
Change	13.6%			6.1%		
Vehicle Revenue Miles	255,441	247,355	3.3%	3,015,456	2,868,807	5.1%
Rides / VRM	1.88	1.68	11.9%	1.87	1.78	5.3%
Est. Gross Operating Cost	\$3,708,984	\$3,491,098	6.2%	\$43,005,660	\$39,097,709	10.0%
Est. Cost Per VRH	\$165	\$158	4.4%	\$161.96	\$153.57	5.5%
Est. Cost Per VRM	\$14.52	\$14.11	2.9%	\$14.26	\$13.63	4.6%
Est. Cost Per Ride	\$7.71	\$8.39	-8.1%	\$7.62	\$7.66	-0.6%

* - Reduced fare includes Youth, Senior, Disabled, and US Veterans

RTC RAPID Virginia Line and Route 1						
ROLLING 12-MONTH COMPARISON						
Most Recent 12 Months			Percent Change	Previous 12 Months		
Month	Year	Ridership		Month	Year	Ridership
Feb	2024	111,239	11.8%	Feb	2023	99,491
Mar		115,379	5.2%	Mar		109,639
Apr		117,811	8.1%	Apr		108,968
May		118,653	5.1%	May		112,931
Jun		111,479	-0.2%	Jun		111,746
Jul		115,958	0.7%	Jul		115,149
Aug		118,809	-2.0%	Aug		121,197
Sep		119,329	-3.2%	Sep		123,298
Oct		126,372	1.3%	Oct		124,715
Nov		111,991	1.9%	Nov		109,893
Dec		113,334	3.1%	Dec		109,966
Jan	2025	114,436	3.8%	Jan	2024	110,229
TOTAL		1,394,790	2.8%	TOTAL		1,357,222

* - Strikes occurred Aug 3-13, Sep 27-Oct 20, Nov 9-Dec 3, 2021

RTC RAPID Virginia Line and Route 1 Fiscal Year Comparisons



RTC RAPID Lincoln Line and Route 11						
Rolling 12-Month Comparison						
Most Recent 12 Months			Percent Change	Previous 12 Months		
Month	Year	Ridership		Month	Year	Ridership
Feb	2024	81,020	43%	Feb	2023	56,669
Mar		86,512	34%	Mar		64,370
Apr		90,650	43%	Apr		63,439
May		94,524	27%	May		74,197
Jun		91,699	20%	Jun		76,479
Jul		97,939	21%	Jul		81,268
Aug		105,967	24%	Aug		85,588
Sep		100,874	17%	Sep		86,016
Oct		104,465	21%	Oct		86,638
Nov		94,528	23%	Nov		76,791
Dec		94,246	21%	Dec		77,855
Jan	2025	100,102	22%	Jan	2024	82,348
TOTAL		1,142,526	25%	TOTAL		911,658

RTC Transit Operating Statistics

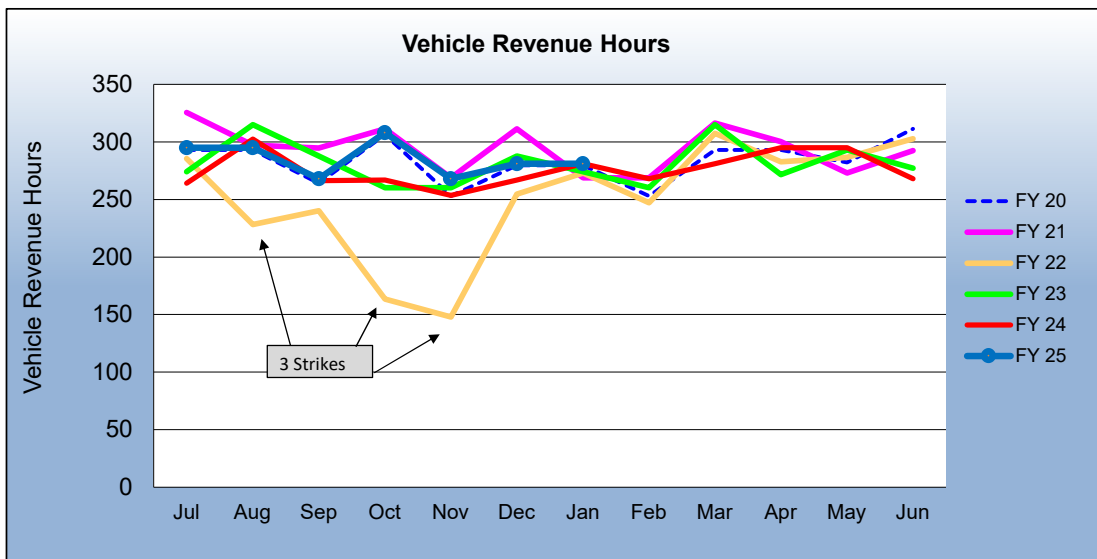
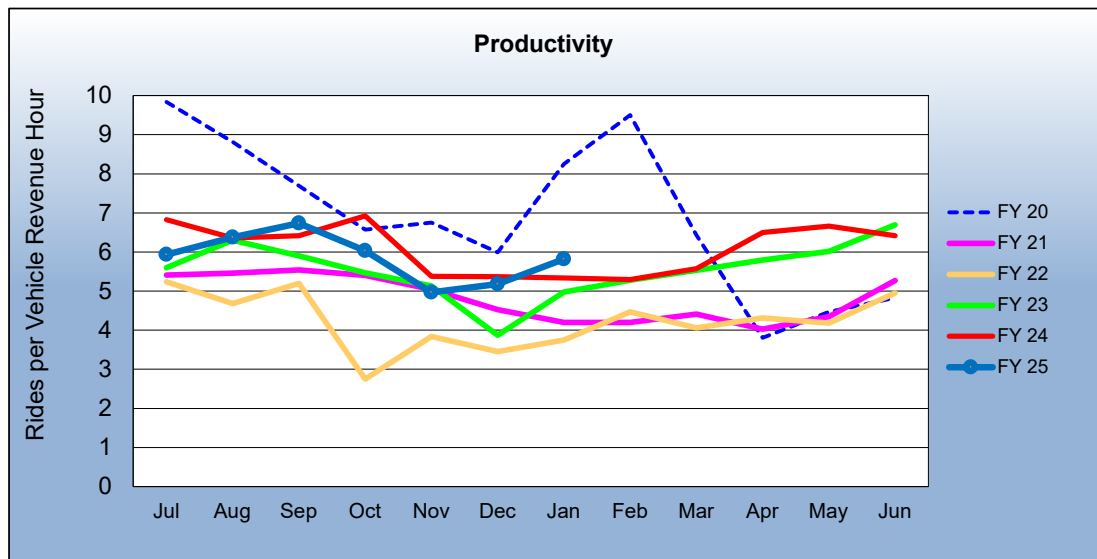
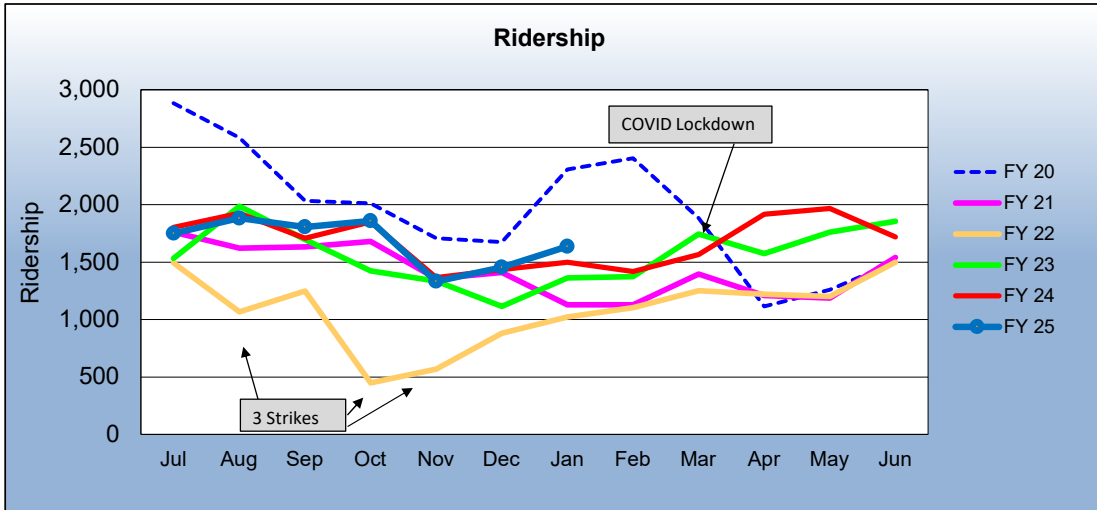
RTC RAPID Virginia & Lincoln Lines						
ROLLING 12-MONTH COMPARISON						
Most Recent 12 Months			Percent Change	Previous 12 Months		
Month	Year	Ridership		Month	Year	Ridership
Feb	2024	111,895	17%	Feb	2023	95,606
Mar		116,399	10%	Mar		105,699
Apr		120,299	14%	Apr		105,548
May		122,131	5.1%	May		116,256
Jun		113,689	-2.7%	Jun		116,866
Jul		117,265	-2.7%	Jul		120,564
Aug		121,538	-5.3%	Aug		128,312
Sep		122,911	-3.4%	Sep		127,255
Oct		129,927	2.0%	Oct		127,380
Nov		117,096	4.8%	Nov		111,741
Dec		118,408	5.6%	Dec		112,141
Jan	2025	120,884	8.5%	Jan	2024	111,384
TOTAL		1,432,442	3.9%	TOTAL		1,378,752

* - Strikes occurred Aug 3-13, Sep 27-Oct 20, Nov 9-Dec 3, 2021

RTC REGIONAL CONNECTOR - Carson Line						
Rolling 12 Month Comparison						
Most Recent 12 Months			Percent Change	Previous 12 Months		
Month	Year	Ridership		Month	Year	Ridership
Feb	2024	1,419	3.3%	Feb	2023	1,374
Mar		1,567	-10.1%	Mar		1,743
Apr		1,916	21.7%	Apr		1,575
May		1,965	11.5%	May		1,762
Jun		1,720	-7.3%	Jun		1,855
Jul		1,751	-2.8%	Jul		1,802
Aug		1,882	-2.2%	Aug		1,924
Sep		1,806	5.7%	Sep		1,708
Oct		1,859	0.5%	Oct		1,849
Nov		1,332	-2.4%	Nov		1,365
Dec		1,456	1.5%	Dec		1,434
Jan	2025	1,636	9.1%	Jan	2024	1,500
TOTAL		20,309	2.1%	TOTAL		19,891

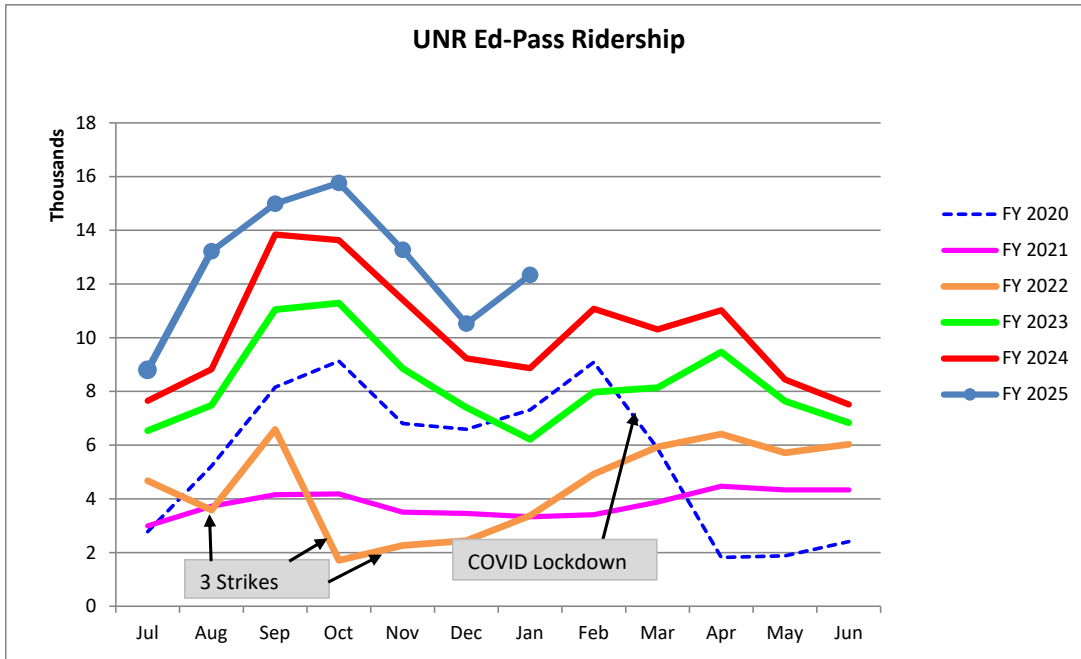
* - Strikes occurred Aug 3-13, Sep 27-Oct 20, Nov 9-Dec 3, 2021

RTC REGIONAL CONNECTOR Carson Line Fiscal Year Comparisons



**RTC Transit Fixed Route Bus Ridership Report
University of Nevada, Reno Ed-Pass Program
FY 2024**

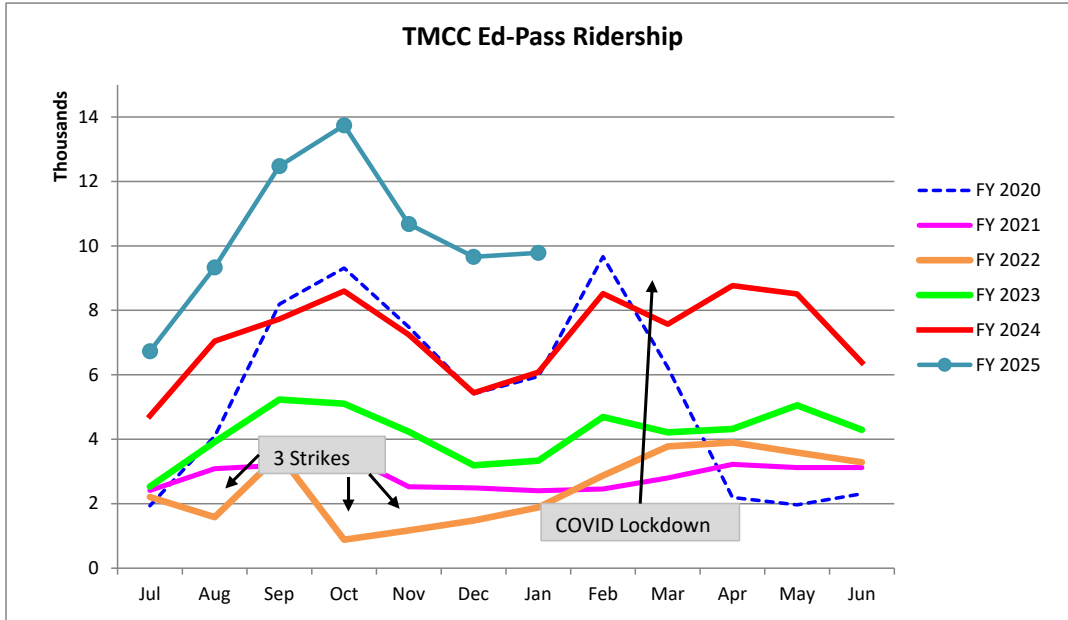
Category	Jul	Aug	Sep	Oct	Nov	Dec	Jan	Feb	Mar	Apr	May	Jun	FYTD
FY 2020	2,779	5,218	8,159	9,127	6,808	6,592	7,312	9,084	5,873	1,818	1,877	2,410	67,057
FY 2021	2,991	3,723	4,156	4,185	3,502	3,455	3,329	3,409	3,881	4,471	4,333	4,330	45,765
FY 2022	4,670	3,581	6,584	1,710	2,264	2,447	3,376	4,924	5,936	6,410	5,716	6,033	53,651
FY 2023	6,539	7,482	11,046	11,291	8,857	7,399	6,215	7,973	8,138	9,470	7,640	6,833	98,883
FY 2024	7,650	8,824	13,841	13,631	11,414	9,231	8,864	11,077	10,309	11,024	8,445	7,516	121,826
Percent Change	15%	50%	8.3%	16%	16%	14%	39%						
FY 2025	8,797	13,215	14,988	15,763	13,269	10,523	12,336						



Fiscal Year	Rides
FY 2003	51,228
FY 2004	55,114
FY 2005	69,685
FY 2006	88,070
FY 2007	85,295
FY 2008	86,461
FY 2009	88,385
FY 2010	79,518
FY 2011	75,925
FY 2012	75,300
FY 2013	50,438
FY 2014	40,854
FY 2015	41,778
FY 2016	50,022
FY 2017	40,581
FY 2018	34,154
FY 2019	30,251
U-Pass:	
FY 2020	67,057
FY 2021	45,765
FY 2022	53,651
FY 2023	98,883
FY 2024	121,826

**RTC Transit Fixed Route Bus Ridership Report
Truckee Meadows Community Ed-Pass Program
FY 2024**

Category	Jul	Aug	Sep	Oct	Nov	Dec	Jan	Feb	Mar	Apr	May	Jun	FYTD
FY 2020	1,933	4,086	8,193	9,311	7,479	5,413	5,945	9,668	6,227	2,193	1,968	2,310	64,726
FY 2021	2,414	3,090	3,194	3,535	2,527	2,493	2,402	2,459	2,800	3,225	3,126	3,124	34,389
FY 2022	2,208	1,584	3,516	883	1,170	1,480	1,886	2,875	3,773	3,899	3,585	3,287	30,146
FY 2023	2,533	3,913	5,233	5,103	4,231	3,195	3,335	4,690	4,213	4,314	5,051	4,292	50,103
FY 2024	4,725	7,045	7,727	8,596	7,244	5,440	6,081	8,520	7,569	8,768	8,510	6,384	86,609
Percent Change	43%	32%	61%	60%	47%	78%	61%						
FY 2025	6,734	9,334	12,476	13,741	10,681	9,659	9,785						



Fiscal Year	Rides
FY 2013	90,583
FY 2014	113,700
FY 2015	94,112
FY 2016	83,375
FY 2017	66,110
FY 2018	53,027
FY 2019	37,191

Ed-Pass:	Rides
FY 2020	64,726
FY 2021	34,389
FY 2022	30,146
FY 2023	50,103
FY 2024	86,609