



**REGIONAL TRANSPORTATION COMMISSION**  
*Public Transportation • Streets and Highways • Planning*



# **RTC Transit Fixed Route Bus Operating Statistics**

**RTC RIDE  
RTC RAPID  
RTC REGIONAL CONNECTOR**

**February 2025**

# RTC Transit Fixed Route Bus Operating Statistics Report

## TABLE OF CONTENTS

RTC Transit Fixed Route Bus Highlights.....	Page ii
RTC Transit Fixed Route Bus Summary .....	Page iv
System Reports.....	Page 1
Economic Data .....	Page 5
Route Comparison Data.....	Page 7
Monthly Operating Statistics.....	Page 9
RTC RAPID Virginia Line & Route 1 .....	Page 14
RTC RAPID Lincoln Line & Route 11 .....	Page 16
RTC REGIONAL CONNECTOR Carson Line .....	Page 18
RTC TMCC and UNR Education Pass.....	Page 20

# RTC Transit Fixed Route Bus Highlights

## February 2025

### RTC Transit Fixed Route Bus

- For the month of February, there were 449,541 rides, **up 7.8%** compared with last year (page 1). The weighted average daily ridership was 16,707, **up 9.2%** compared with last year (page 3).
- For the most recent 12 months, there were 5.68 million rides, **up 10.2%** compared with the previous 12 months.
- In February, there were 20,382 service hours, **down 3.1%** compared with last year (page 9).
- Productivity was 22.1 rides per service hour, **up 11.3%** compared with last year (page 9).

### External Impacts on Ridership

- The average temperature this month was 42.4° F, 1.0° F higher compared with last year.
- The Reno-Sparks area preliminary unemployment rate in January was 5.1%. Unemployment has been gradually trending upward since a low of 2.8% in February 2021.
- Nevada's preliminary unemployment rate for January was 5.8%. The national unemployment rate for January was 4.0%.

## Historical Impacts Causing a Downward Trend in Bus Ridership

- According to the Bureau of Labor Statistics, 27% of US employees worked remotely at least part of the time in 2023, with several academic surveys suggesting it is closer to 50%\*.
- In April 2022, the City of Reno entered an agreement with Bird electric scooters to serve Reno.
- In 2021, Keolis transit workers went on strike August 3 to 13, September 27 to October 20, and November 9 to December 3. Limited service was provided on Routes 1, 7, and 11 and RTC REGIONAL CONNECTOR to Carson City. RTC provided free rides on RIDE, FlexRIDE, taxis, and UberX during the second and third strikes.
- A combination of the pandemic, stimulus checks, easy car financing, and gig jobs requiring cars has likely resulted in a large number of people abandoning transit for car ownership.
- In response to the COVID-19 pandemic, Governor Sisolak ordered the shutdown of casinos and other nonessential businesses in March 2020. In May 2020, Governor Sisolak reopened a number of businesses including bars, salons, gyms, and retail. Casinos were allowed to reopen in June 2020. In May 2021, maximum business capacity increased to 100% in Washoe County.
- There has been an increase in people working primarily from home, approximately eight million in 2018 according to US Census Bureau estimates, taking over transit as the second most common means of getting to work.
- While employment has increased in the region, the makeup of local employment has significantly changed. When Reno was a tourism and gaming town, a large portion of employment was in the low-wage, service industry whereas recently jobs tend to be higher wage and geographically dispersed requiring cars.
- Uber started permanent service in Reno in 2015 and Lyft started shortly after.
- As of 2014, Nevada provides driver's licenses for people who are undocumented immigrants.
- As downtown and midtown areas in-fill and gentrify, this also pushes lower income people to the suburbs where they are much more likely to need cars. This is a nationwide trend.
- The drop in ridership (before COVID) has been a nationwide trend as illustrated by the chart on page 4 which compares RTC transit ridership with US and Canadian bus ridership.
- With the growth of online shopping and food delivery, it is also likely that bus trips used for shopping and dining out has fallen substantially, especially for those with mobility challenges who would prefer online shopping and food delivery. Also, people without cars may decide to purchase a car with the intention of using the car to deliver food and finance the car.

\* - <https://www.forbes.com/sites/forbesfinancecouncil/2023/11/06/changing-environment-altering-employer-obligations-for-remote-workers/?sh=7c9e531e2145>



## RTC Transit Fixed Route Bus Summary

### Route Ridership

- For February, Route 18 (serving Glendale) had the highest productivity with 27.4 rides per service hour.
- Route 1 (serving S Virginia St between downtown Reno and Meadowood Mall) came in second with 25.9.
- Route 5 (serving Sun Valley) had the third highest productivity in the system with 24.6 rides per service hour (page 7).
- Route 16 (serving Idlewild) ridership had the highest increase compared with last year by 39.1%.
- Route 11 (serving Fourth - Prater) and Route 12 (serving Terminal - Neil) had the second highest increase in ridership at 19.4%.

### RTC RAPID (Virginia & Lincoln Lines Combined)

- This month, there were 115,147 rides on RTC RAPID, **up 2.9%** compared with last year. By comparison, system ridership was up 7.8%. The productivity of RTC RAPID at 26.9 rides per service hour was **up 6.1%** compared with last year. By comparison, system productivity was 22.1 rides per service hour, **up 11.3%** compared with last year.
- There were 1.44 million rides over the most recent 12 months, **up 2.9%** compared with the previous 12 months.
- RAPID rides now make up 25.6% of system ridership.
- 45.0% of all system rides were taken on RAPID and Routes 1 and 11.

## RTC RAPID Virginia Line

- This month, there were 78,676 rides on the Virginia Line **up 0.6%** compared with last year. Productivity at 27.1 rides per service hour is **up 3.8%** compared with last year.
- Ridership for both the Virginia Line and Route 1 was 109,175 **down 1.9%** compared with last year (page 14). There were 1.39 million rides over the most recent 12 months, **up 1.7%** compared with the previous 12 months.

## RTC RAPID Lincoln Line

- This month, there were 36,471 rides on the Lincoln Line **up 8.1%** compared with last year. Productivity at 26.5 rides per service hour is **up 11%** compared with last year.
- Ridership for both the Lincoln Line and Route 11 was 92,939 **up 15%** compared with last year (page 16). There were 1.15 million rides for the most recent 12 months, **up 23%** compared with the previous 12 months.

## RTC REGIONAL CONNECTOR Carson Line

- There were 1,492 rides this month, **up 5.1%** compared with last February (page 18). At 5.9 rides per service hour, productivity is **up 11%** compared to last year. There were 20,382 rides for the most recent 12 months, **up 2.2 %** compared with the previous 12 months.

## RTC TMCC and UNR Education Pass

- There were 14,363 UNR Ed-Pass rides, **up 30%** compared with last year (page 20).
- There were 11,186 TMCC Ed-Pass rides, **up 31%** compared with last year.

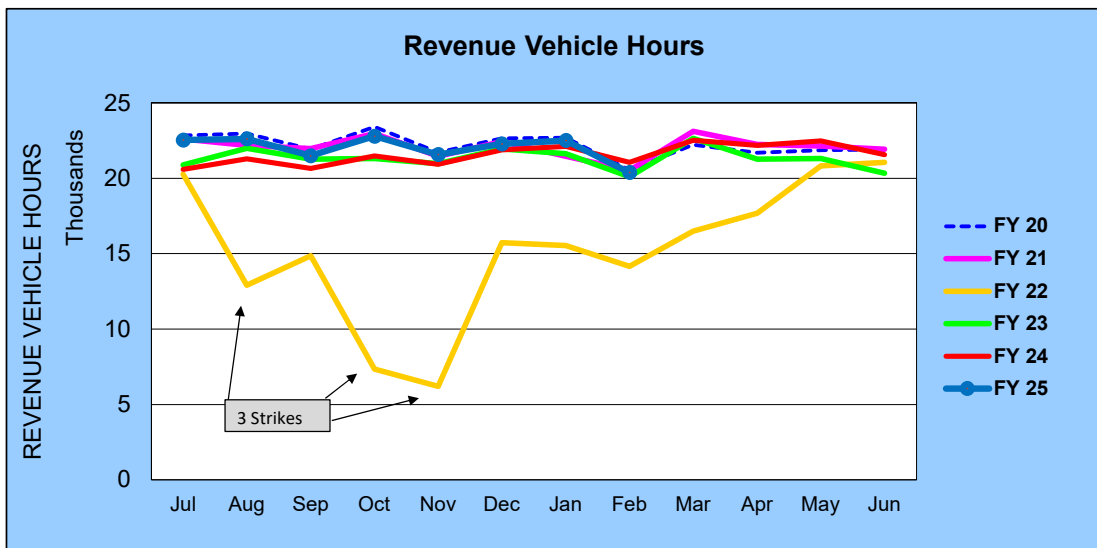
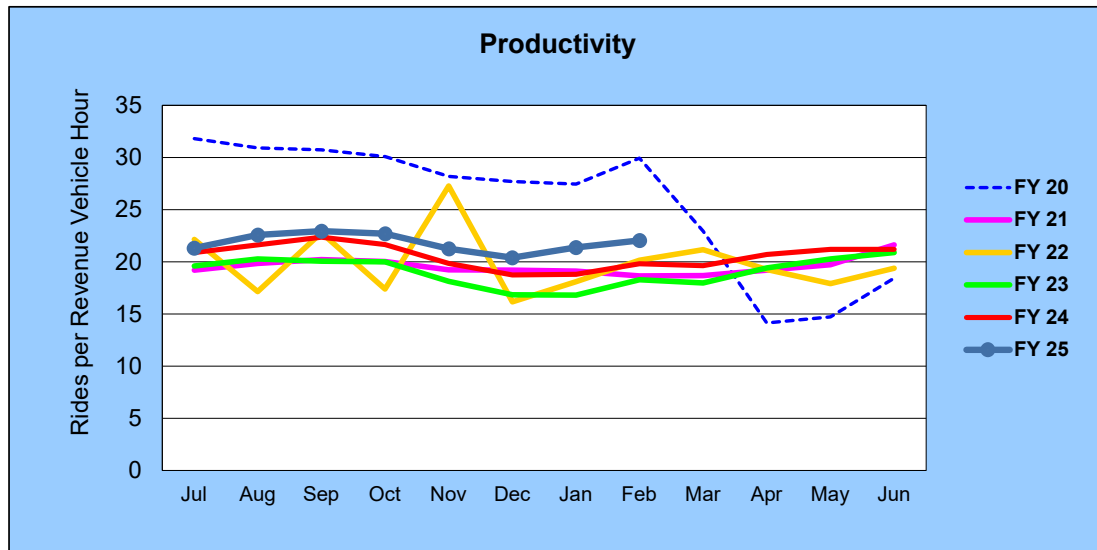
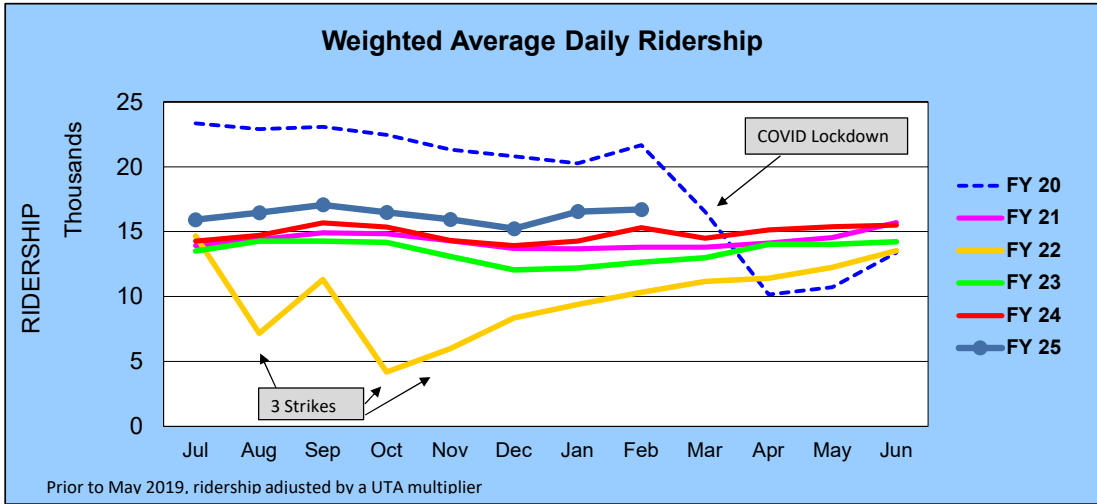
RTC Transit Operating Statistics

<b>RTC Transit Fixed Route Bus</b>						
<b>Rolling 12-Month Ridership Comparison</b>						
<b>Most Recent 12 Months</b>			<b>Percent Change</b>	<b>Previous 12 Months</b>		
<b>Month</b>	<b>Year</b>	<b>Ridership</b>		<b>Month</b>	<b>Year</b>	<b>Ridership</b>
Mar	2024	442,102	8.6%	Mar	2023	407,074
Apr		459,351	11.3%	Apr		412,674
May		476,695	10.3%	May		432,170
Jun		456,808	7.5%	Jun		425,106
Jul		480,395	11.8%	Jul		429,718
Aug		510,365	10.9%	Aug		460,384
Sep		493,117	6.8%	Sep		461,670
Oct		516,977	11.1%	Oct		465,243
Nov		458,480	10.3%	Nov		415,646
Dec		454,469	10.8%	Dec		410,240
Jan	2025	481,095	15.6%	Jan	2024	416,157
Feb		449,541	7.8%	Feb		417,018
<b>TOTAL</b>		<b>5,679,395</b>	<b>10.2%</b>	<b>TOTAL</b>		<b>5,153,100</b>

RTC Transit includes RTC RIDE, RTC RAPID, & RTC REGIONAL CONNECTOR

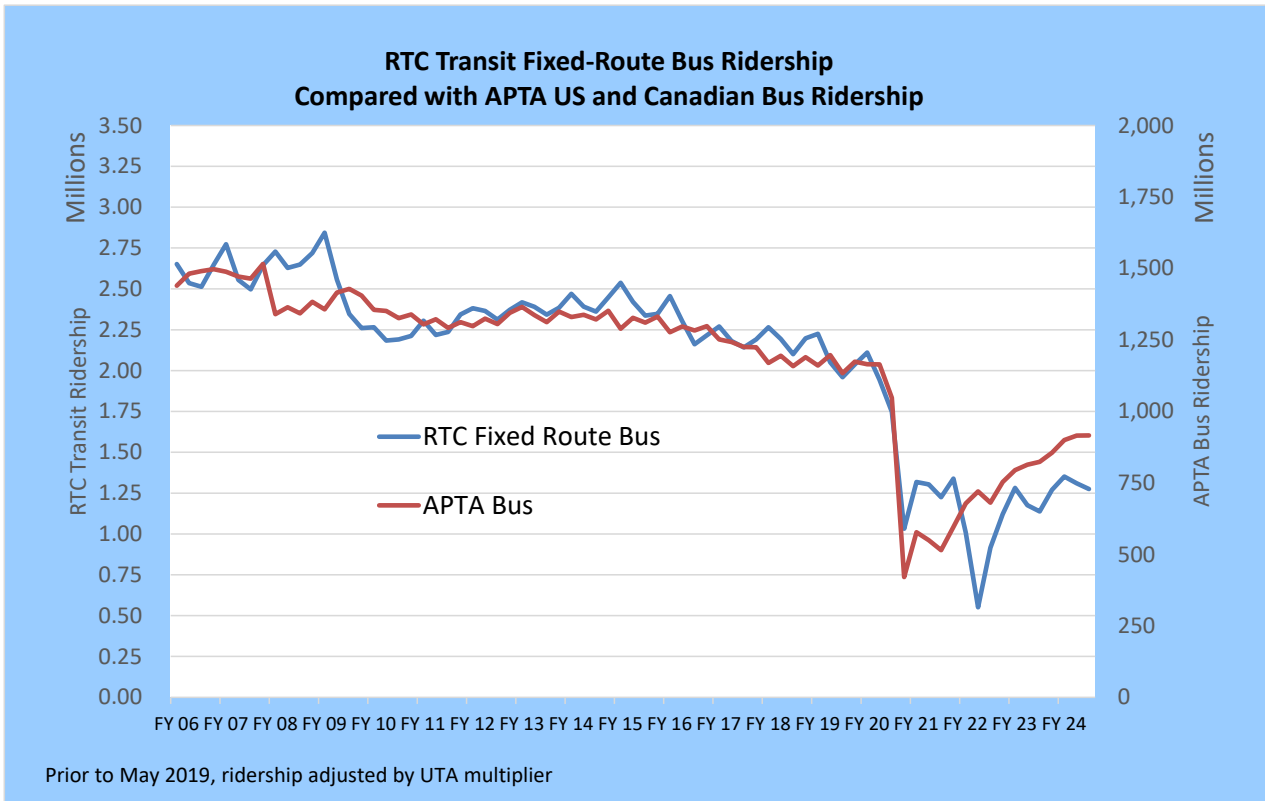
# RTC Transit Fixed Route Bus

## FISCAL YEAR COMPARISONS

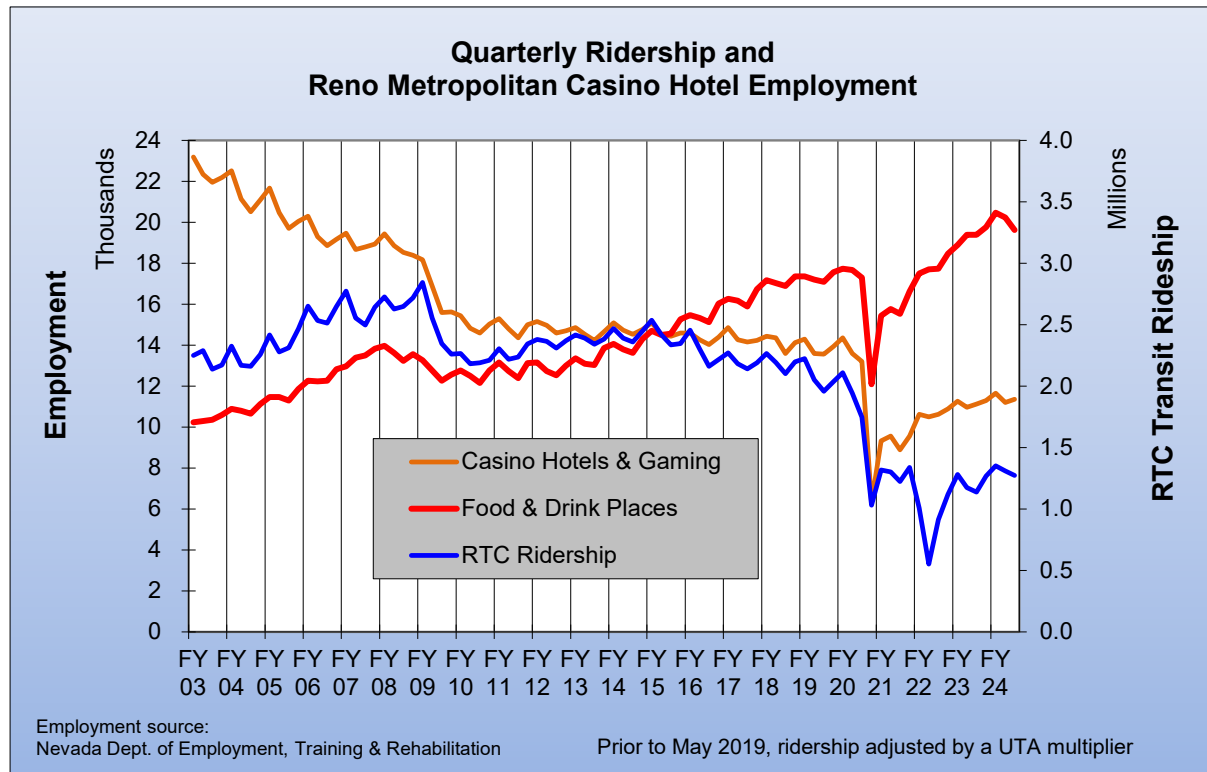
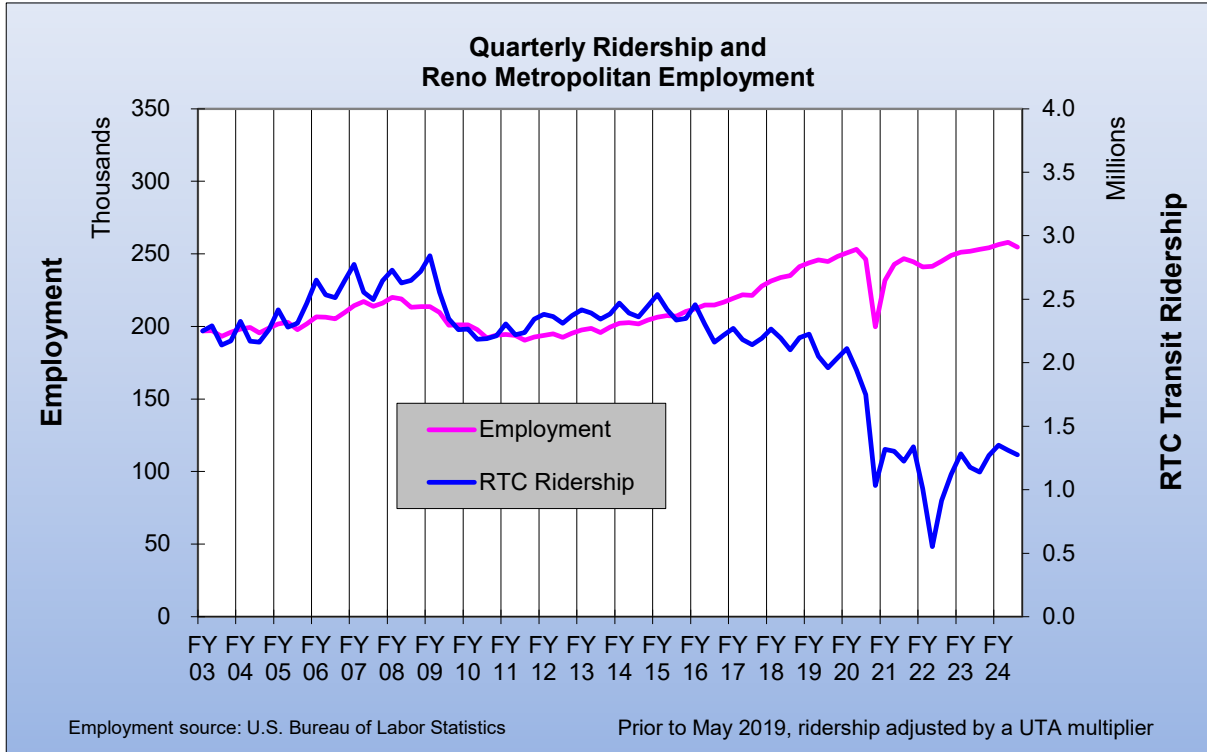




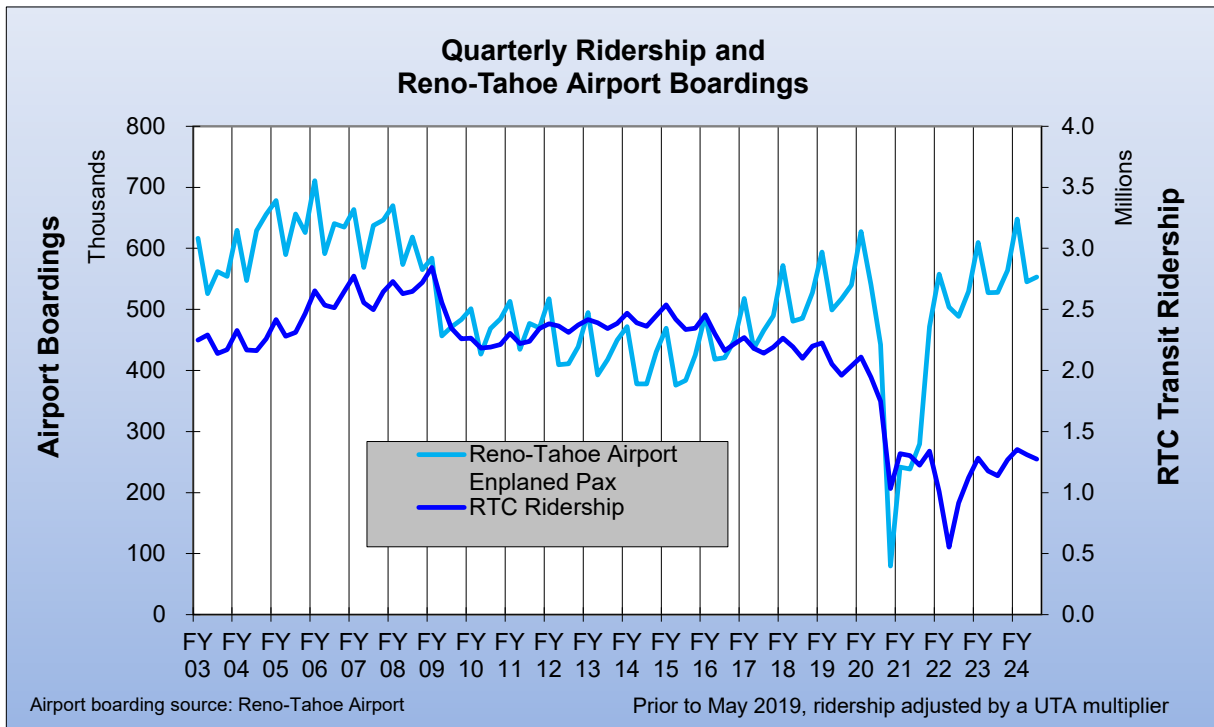
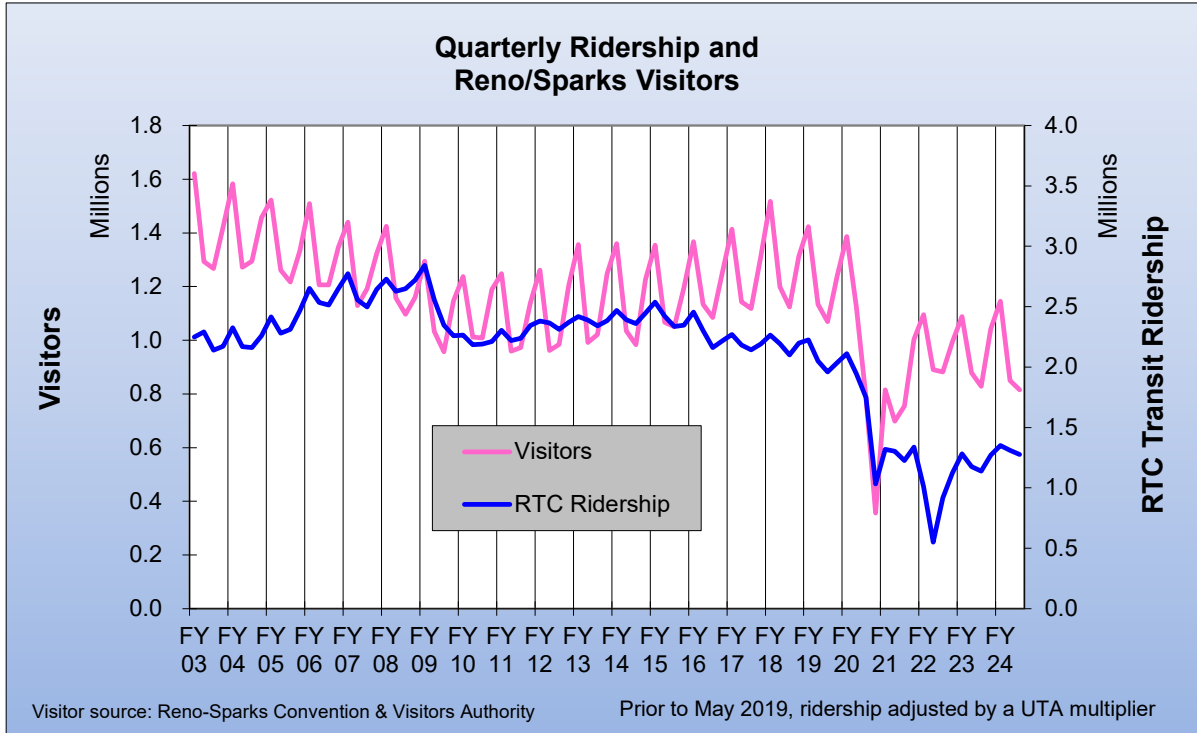
<b>RTC Transit Fixed-Route Bus</b>						
<b>Weighted Average Daily Ridership Rolling 12-Month Ridership Comparison</b>						
<b>Most Recent 12 Months</b>			<b>Percent Change</b>	<b>Previous 12 Months</b>		
<b>Month</b>	<b>Year</b>	<b>Ridership</b>		<b>Month</b>	<b>Year</b>	<b>Ridership</b>
Mar	2024	14,500	11.7%	Mar	2023	12,981
Apr		15,129	7.9%	Apr		14,016
May		15,373	9.7%	May		14,008
Jun		16,157	13.6%	Jun		14,227
Jul		15,924	11.7%	Jul		14,257
Aug		16,462	12.0%	Aug		14,698
Sep		17,068	8.9%	Sep		15,675
Oct		16,494	7.4%	Oct		15,353
Nov		15,951	11.4%	Nov		14,320
Dec		15,235	9.4%	Dec		13,931
Jan	2025	16,546	16.0%	Jan	2024	14,262
Feb		16,707	9.2%	Feb		15,294



## RTC Transit Fixed-Route Bus



## RTC Transit Fixed-Route Bus



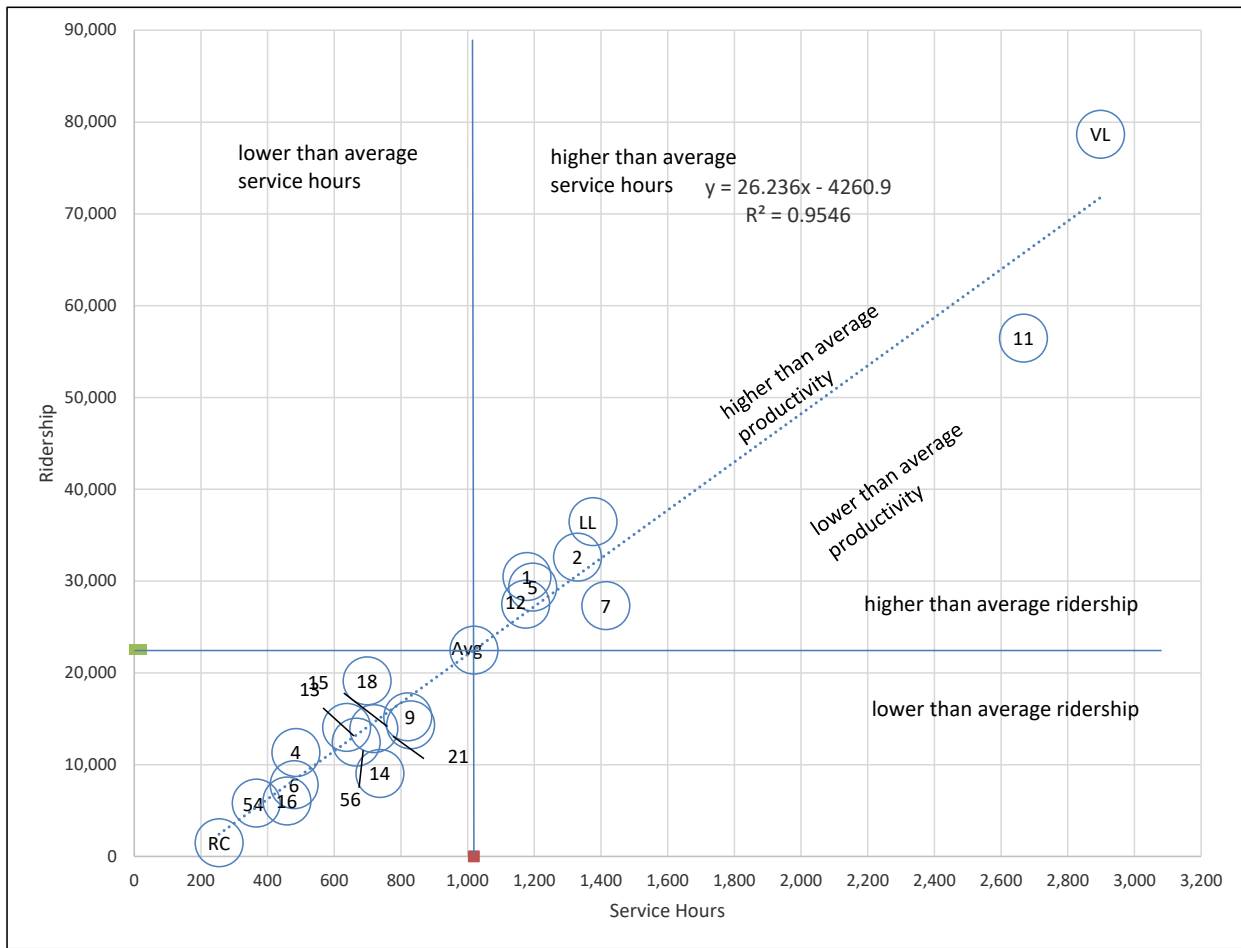
# RTC Route Comparison Report

## Feb 2025

Route *	Productivity	Route	Svs Hours Change Fr. Last Year	Route	Ridership	Route	Ridership Change From Last Year
18	27.4	5	5.4%	RAP VL	78,676	16	39.1%
RAP VL	27.1	21	1.9%	11	56,468	11	19.4%
RAP LL	26.5	7	1.1%	RAP LL	36,471	12	19.4%
1	25.9	1	-2.9%	2	32,609	6	18.3%
5	24.6	RAP LL	-2.9%	1	30,499	54	15.1%
2	24.5	RAP VL	-3.0%	5	29,339	5	13.8%
12	23.4	TOTAL	-3.1%	12	27,481	2	11.3%
4	23.4	12	-3.2%	7	27,318	21	10.6%
TOTAL	22.1	9	-3.3%	18	19,141	7	8.6%
13	22.1	4	-3.6%	9	15,207	56	8.3%
11	21.2	6	-3.6%	21	14,338	RAP LL	8.1%
15	19.4	54	-3.6%	13	14,054	TOTAL	7.8%
7	19.3	2	-3.7%	15	13,930	13	7.1%
56	18.7	14	-3.7%	56	12,456	14	6.7%
9	18.5	16	-3.7%	4	11,332	9	5.9%
21	17.3	13	-3.9%	14	9,050	15	5.3%
6	16.3	15	-4.0%	6	7,825	RTC RC	5.1%
54	15.9	56	-4.1%	16	6,045	4	2.4%
16	13.2	18	-4.2%	54	5,810	RAP VL	0.6%
14	12.3	RTC RC	-5.0%	RTC RC	1,492	18	-1.0%
RTC RC	5.9	11	-8.4%	TOTAL	449,541	1	-7.8%

\* - RTC RC is RTC REGIONAL CONNECTOR.

## RTC Route Comparison Chart Feb 2025



2024

"higher" and "lower" refer to higher or lower than the average of all routes (not the system average)

# RTC TRANSIT OPERATING STATISTICS

**Feb 2025**

Route	Total Ridership	Previous Year	Change	Vehicle Revenue Hours	Previous Year	Change	Rides/VRH	Previous Year	Change
RAPID VL	78,676	78,168	0.6%	2,898	2,989	-3.0%	27.1	26.2	3.8%
RAPID LL	36,471	33,727	8.1%	1,376	1,418	-2.9%	26.5	23.8	11%
1	30,499	33,071	-7.8%	1,178	1,213	-2.9%	25.9	27.3	-5.0%
2	32,609	29,311	11%	1,330	1,381	-3.7%	24.5	21.2	16%
4	11,332	11,064	2.4%	485	503	-3.6%	23.4	22.0	6.3%
5	29,339	25,777	14%	1,195	1,134	5.4%	24.6	22.7	8%
6	7,825	6,614	18%	480	498	-3.6%	16.3	13.3	23%
7	27,318	25,165	8.6%	1,415	1,400	1.1%	19.3	18.0	7.4%
9	15,207	14,359	5.9%	820	848	-3.3%	18.5	16.9	10%
11	56,468	47,293	19%	2,667	2,911	-8.4%	21.2	16.2	30%
12	27,481	23,016	19%	1,174	1,213	-3.2%	23.4	19.0	23%
13	14,054	13,128	7.1%	637	663	-3.9%	22.1	19.8	11%
14	9,050	8,482	6.7%	737	765	-3.7%	12.3	11.1	11%
15	13,930	13,226	5.3%	719	749	-4.0%	19.4	17.7	10%
16	6,045	4,345	39%	458	476	-3.7%	13.2	9.1	45%
18	19,141	19,344	-1.0%	698	729	-4.2%	27.4	26.5	3%
21	14,338	12,963	11%	829	813	1.9%	17.3	15.9	9%
54	5,810	5,046	15%	366	380	-3.6%	15.9	13.3	20%
56	12,456	11,500	8.3%	666	695	-4.1%	18.7	16.6	13%
RC Carson	1,492	1,419	5.1%	255	268	-5.0%	5.9	5.3	11%
Misc. Service		0	N/A		0	N/A		0.0	N/A
<b>Feb 2025</b>	<b>449,541</b>	<b>417,018</b>	<b>7.8%</b>	<b>20,382</b>	<b>21,044</b>	<b>-3.1%</b>	<b>22.1</b>	<b>19.8</b>	<b>11.3%</b>
Feb '24	417,018			21,044			19.8		
Perc. Change	7.8%			-3.1%			11.3%		

# RTC TRANSIT OPERATING STATISTICS

**Feb 2025**

Route	Vehicle Revenue Miles	Rides/VRM	Est. Gross Operating Cost	Est. Cost Per VRH	Est. Cost Per VRM	Est. Cost Per Ride
RAPID VL	30,001	2.62	\$477,757	\$165	\$15.92	\$6.07
RAPID LL	13,274	2.75	\$226,880	\$165	\$17.09	\$6.22
1	11,676	2.61	\$194,193	\$165	\$16.63	\$6.37
2	13,927	2.34	\$219,209	\$165	\$15.74	\$6.72
4	6,286	1.80	\$79,977	\$165	\$12.72	\$7.06
5	14,524	2.02	\$196,990	\$165	\$13.56	\$6.71
6	4,443	1.76	\$79,065	\$165	\$17.80	\$10.10
7	24,256	1.13	\$233,180	\$165	\$9.61	\$8.54
9	9,249	1.64	\$135,227	\$165	\$14.62	\$8.89
11	28,242	2.00	\$439,660	\$165	\$15.57	\$7.79
12	11,921	2.31	\$193,529	\$165	\$16.23	\$7.04
13	5,875	2.39	\$105,046	\$165	\$17.88	\$7.47
14	7,101	1.27	\$121,491	\$165	\$17.11	\$13.42
15	7,401	1.88	\$118,497	\$165	\$16.01	\$8.51
16	3,172	1.91	\$75,502	\$165	\$23.80	\$12.49
18	7,590	2.52	\$115,118	\$165	\$15.17	\$6.01
21	9,047	1.58	\$136,641	\$165	\$15.10	\$9.53
54	5,873	0.99	\$60,302	\$165	\$10.27	\$10.38
56	9,817	1.27	\$109,812	\$165	\$11.19	\$8.82
RC Carson	7,651	0.19	\$41,971	\$165	\$5.49	\$28.13
Misc. Service						
<b>Feb 2025</b>	<b>231,325</b>	<b>1.94</b>	<b>\$3,360,044</b>	<b>\$165</b>	<b>\$14.53</b>	<b>\$7.47</b>
Feb '24	234,793	1.78	\$3,322,133	\$158	\$14.15	\$7.97
Perc. Change	-1.5%	9.4%	1.1%	4.4%	2.7%	-6.2%



RTC Transit Operating Statistics

Mar'24 - Feb '25

Route	Total Ridership	Previous Year	Change	Vehicle Revenue Hours	Previous Year	Change	Rides/VRH	Previous Year	Change
RAPID VL	978,895	946,514	3%	37,941	37,277	2%	25.8	25.4	2%
RAPID LL	456,799	448,527	2%	18,030	17,746	2%	25.3	25.3	0%
1	413,831	422,456	-2%	15,365	15,917	-3%	26.9	26.5	1%
2	402,047	367,969	9%	17,192	17,265	0%	23.4	21.3	10%
4	150,604	142,809	5%	6,341	6,412	-1%	23.8	22.3	7%
5	366,028	335,302	9%	14,523	14,225	2%	25.2	23.6	7%
6	92,989	80,030	16%	6,253	6,154	2%	14.9	13.0	14%
7	367,227	324,160	13%	17,814	18,357	-3%	20.6	17.7	17%
9	200,283	171,155	17%	10,753	11,087	-3%	18.6	15.4	21%
11	697,646	487,482	43%	35,059	26,700	31%	19.9	18.3	9%
12	338,275	284,961	19%	15,460	14,009	10%	21.9	20.3	8%
13	172,674	149,643	15%	8,317	8,155	2%	20.8	18.3	13%
14	112,778	101,251	11%	9,653	9,334	3%	11.7	10.8	8%
15	180,034	159,630	13%	9,426	9,313	1%	19.1	17.1	11%
16	71,326	52,748	35%	5,993	5,707	5%	11.9	9.2	29%
18	243,835	253,455	-4%	9,181	9,332	-2%	26.6	27.2	-2%
21	180,011	172,647	4%	10,665	9,582	11%	16.9	18.0	-6%
54	70,344	67,855	4%	770	4,996	-85%	91.3	13.6	572%
56	163,387	135,931	20%	1,401	7,870	-82%	116.6	17.3	575%
RC Carson	20,382	19,936	2%	536	3,327	-84%	38.0	6.0	535%
Misc. Service									
<b>Current 12 Months</b>	<b>5,679,395</b>	<b>5,153,100</b>	<b>10.2%</b>	<b>264,868</b>	<b>255,523</b>	<b>3.7%</b>	<b>21.4</b>	<b>20.2</b>	<b>6.3%</b>
Previous 12 Months	5,153,100			255,523			20.2		
Perc. Change	10.2%			3.7%			6.3%		

RTC Transit Operating Statistics

Mar'24 - Feb '25

Route	Vehicle Revenue Miles (thousand)	Rides/VRM	Est. Gross Operating Cost (thousand)	Est. Cost Per VRH	Est. Cost Per VRM	Est. Cost Per Ride
RAPID VL	385.7	2.54	\$6,166	\$163	\$15.98	\$6.30
RAPID LL	173.7	2.63	\$2,930	\$163	\$16.87	\$6.41
1	152.0	2.72	\$2,497	\$163	\$16.43	\$6.03
2	180.2	2.23	\$2,794	\$163	\$15.50	\$6.95
4	82.2	1.83	\$1,030	\$163	\$12.54	\$6.84
5	191.0	1.92	\$2,361	\$163	\$12.36	\$6.45
6	57.9	1.61	\$1,016	\$163	\$17.54	\$10.93
7	313.8	1.17	\$2,895	\$163	\$9.23	\$7.88
9	121.0	1.66	\$1,748	\$163	\$14.44	\$8.73
11	366.4	1.90	\$5,696	\$162	\$15.55	\$8.16
12	156.3	2.16	\$2,512	\$163	\$16.07	\$7.43
13	76.4	2.26	\$1,352	\$163	\$17.69	\$7.83
14	93.1	1.21	\$1,569	\$163	\$16.86	\$13.91
15	97.0	1.86	\$1,532	\$163	\$15.79	\$8.51
16	41.6	1.71	\$974	\$163	\$23.40	\$13.66
18	99.8	2.44	\$1,492	\$163	\$14.95	\$6.12
21	116.6	1.54	\$1,734	\$163	\$14.87	\$9.63
54	76.6	0.92	\$776	\$1,007	\$10.12	\$11.03
56	128.8	1.27	\$1,420	\$1,013	\$11.03	\$8.69
RC Carson	101.9	0.20	\$551	\$1,028	\$5.41	\$27.03
Misc. Service						
<b>Current 12 Months</b>	<b>3,012.0</b>	<b>1.89</b>	<b>\$43,044</b>	<b>\$163</b>	<b>\$14.29</b>	<b>\$7.58</b>
Previous 12 Months	2,868.8	1.80	\$39,098	\$153	\$13.63	\$7.59
Perc. Change	5.0%	5.0%	10.1%	6.2%	4.9%	-0.1%

**February**

**Mar 2024 - Feb 2025**

	2024	2023	Percent Change	Current 12 Months	Previous 12 Month	Percent Change
<b>Single Ride Cash</b>						
Full Fare	2,848	3,914	-27%	42,566	59,772	-29%
Reduced*	5,636	5,858	-3.8%	68,118	85,279	-20%
RTC ACCESS ID	158	400	-61%	3,008	4,098	-27%
<b>Total</b>	<b>8,642</b>	<b>10,172</b>	<b>-15%</b>	<b>113,692</b>	<b>149,149</b>	<b>-24%</b>
<b>Day Pass Cash</b>						
Full Fare	44,524	51,513	-14%	649,889	686,391	-5.3%
Reduced*	58,499	63,869	-8.4%	791,445	829,794	-4.6%
<b>Total</b>	<b>103,023</b>	<b>115,382</b>	<b>-11%</b>	<b>1,441,334</b>	<b>1,516,185</b>	<b>-4.9%</b>
<b>Pre-Purchase Period Pass</b>						
Full Fare	115,693	109,841	5%	1,429,678	1,300,767	10%
Reduced*	161,809	132,677	22%	1,922,733	1,581,813	22%
<b>Total</b>	<b>277,502</b>	<b>242,518</b>	<b>14%</b>	<b>3,352,411</b>	<b>2,882,580</b>	<b>16%</b>
Transfers	360	137	163%	3,571	1,926	85%
Flow Through	8,118	4,009	102%	78,621	62,442	26%
Free Rides	23,440	22,004	7%	379,851	313,317	21%
U/Ed-Pass Free Rides	25,549	19,597	30%	262,068	190,736	37%
Stored Ride Pass	2,907	3,199	-9.1%	37,137	36,759	1.0%
Full Fare	177,365	178,232	-0.5%	2,335,740	2,231,707	4.7%
Reduced*	272,104	238,627	14%	3,342,131	2,919,972	14%
<b>Total Ridership</b>	<b>449,541</b>	<b>417,018</b>	<b>7.8%</b>	<b>5,679,395</b>	<b>5,153,100</b>	<b>10%</b>
Previous 12 Months	417,018			5,153,100		
Change	7.8%			10.2%		
<b>Vehicle Revenue Hours</b>	<b>20,382</b>	<b>21,044</b>	<b>-3.1%</b>	<b>264,868</b>	<b>255,523</b>	<b>3.7%</b>
Previous 12 Months	21,044			255,523		
Change	-3.1%			3.7%		
<b>Rides / VRH</b>	<b>22.1</b>	<b>19.8</b>	<b>11%</b>	<b>21.4</b>	<b>20.2</b>	<b>6.3%</b>
Previous 12 Months	19.8			20.2		
Change	11.3%			6.3%		
<b>Vehicle Revenue Miles</b>	<b>231,325</b>	<b>234,793</b>	<b>-1.5%</b>	<b>3,011,987</b>	<b>2,868,807</b>	<b>5.0%</b>
<b>Rides / VRM</b>	<b>1.94</b>	<b>1.78</b>	<b>9.4%</b>	<b>1.89</b>	<b>1.80</b>	<b>5.0%</b>
Est. Gross Operating Cost	\$3,360,044	\$3,322,133	1.1%	\$43,043,572	\$39,097,709	10.1%
Est. Cost Per VRH	\$165	\$158	4.4%	\$162.51	\$153.01	6.2%
Est. Cost Per VRM	\$14.53	\$14.15	2.7%	\$14.29	\$13.63	4.9%
Est. Cost Per Ride	\$7.47	\$7.97	-6.2%	\$7.58	\$7.59	-0.1%

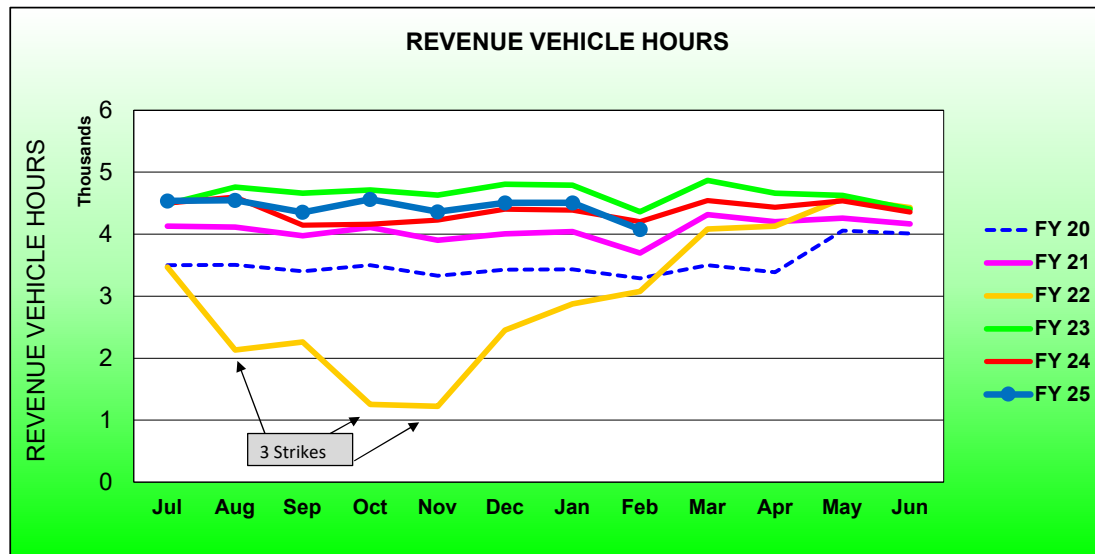
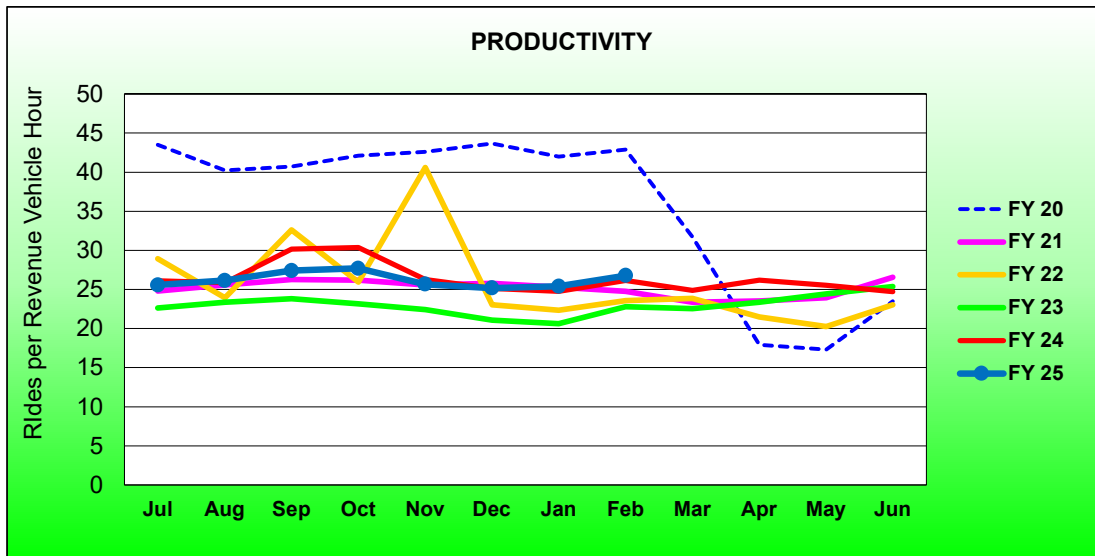
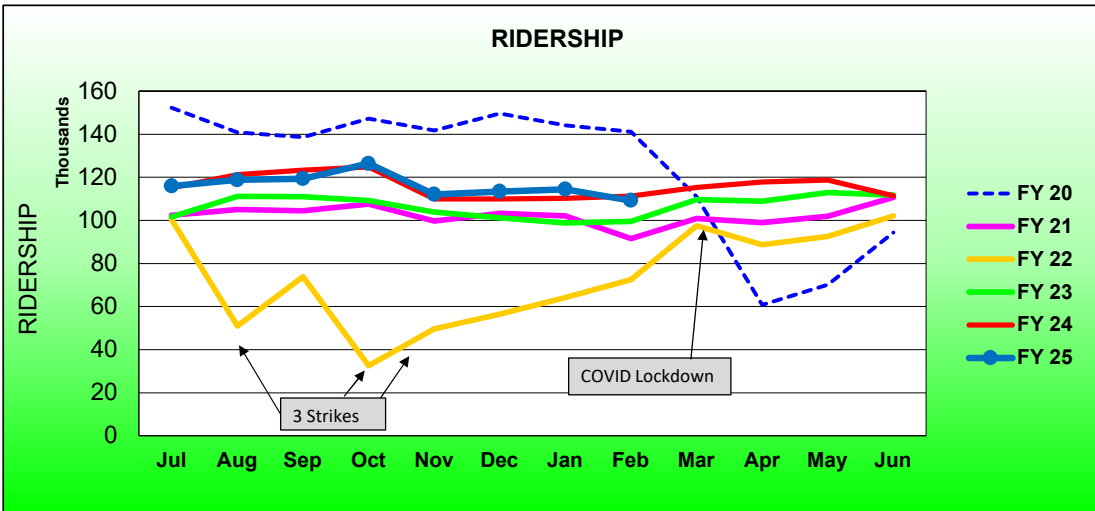
\* - Reduced fare includes Youth, Senior, Disabled, and US Veterans

RTC Transit Operating Statistics

<b>RTC RAPID Virginia Line and Route 1</b>						
<b>ROLLING 12-MONTH COMPARISON</b>						
<b>Most Recent 12 Months</b>			<b>Percent Change</b>	<b>Previous 12 Months</b>		
<b>Month</b>	<b>Year</b>	<b>Ridership</b>		<b>Month</b>	<b>Year</b>	<b>Ridership</b>
Mar	2024	115,379	5.2%	Mar	2023	109,639
Apr		117,811	8.1%	Apr		108,968
May		118,653	5.1%	May		112,931
Jun		111,479	-0.2%	Jun		111,746
Jul		115,958	0.7%	Jul		115,149
Aug		118,809	-2.0%	Aug		121,197
Sep		119,329	-3.2%	Sep		123,298
Oct		126,372	1.3%	Oct		124,715
Nov		111,991	1.9%	Nov		109,893
Dec		113,334	3.1%	Dec		109,966
Jan	2025	114,436	3.8%	Jan	2024	110,229
Feb		109,175	-1.9%	Feb		111,239
<b>TOTAL</b>		<b>1,392,726</b>	<b>1.7%</b>	<b>TOTAL</b>		<b>1,368,970</b>

\* - Strikes occurred Aug 3-13, Sep 27-Oct 20, Nov 9-Dec 3, 2021

### RTC RAPID Virginia Line and Route 1 Fiscal Year Comparisons



<b>RTC RAPID Lincoln Line and Route 11</b>						
<b>Rolling 12-Month Comparison</b>						
<b>Most Recent 12 Months</b>			<b>Percent Change</b>	<b>Previous 12 Months</b>		
<b>Month</b>	<b>Year</b>	<b>Ridership</b>		<b>Month</b>	<b>Year</b>	<b>Ridership</b>
Mar	2024	86,512	34%	Mar	2023	64,370
Apr		90,650	43%	Apr		63,439
May		94,524	27%	May		74,197
Jun		91,699	20%	Jun		76,479
Jul		97,939	21%	Jul		81,268
Aug		105,967	24%	Aug		85,588
Sep		100,874	17%	Sep		86,016
Oct		104,465	21%	Oct		86,638
Nov		94,528	23%	Nov		76,791
Dec		94,246	21%	Dec		77,855
Jan	2025	100,102	22%	Jan	2024	82,348
Feb		92,939	15%	Feb		81,020
<b>TOTAL</b>		<b>1,154,445</b>	<b>23%</b>	<b>TOTAL</b>		<b>936,009</b>

RTC Transit Operating Statistics

<b>RTC RAPID Virginia &amp; Lincoln Lines</b>						
<b>ROLLING 12-MONTH COMPARISON</b>						
<b>Most Recent 12 Months</b>			<b>Percent Change</b>	<b>Previous 12 Months</b>		
<b>Month</b>	<b>Year</b>	<b>Ridership</b>		<b>Month</b>	<b>Year</b>	<b>Ridership</b>
Mar	2024	116,399	10%	Mar	2023	105,699
Apr		120,299	14%	Apr		105,548
May		122,131	5.1%	May		116,256
Jun		113,689	-2.7%	Jun		116,866
Jul		117,265	-2.7%	Jul		120,564
Aug		121,538	-5.3%	Aug		128,312
Sep		122,911	-3.4%	Sep		127,255
Oct		129,927	2.0%	Oct		127,380
Nov		117,096	4.8%	Nov		111,741
Dec		118,408	5.6%	Dec		112,141
Jan	2025	120,884	8.5%	Jan	2024	111,384
Feb		115,147	2.9%	Feb		111,895
<b>TOTAL</b>		<b>1,435,694</b>	<b>2.9%</b>	<b>TOTAL</b>		<b>1,395,041</b>

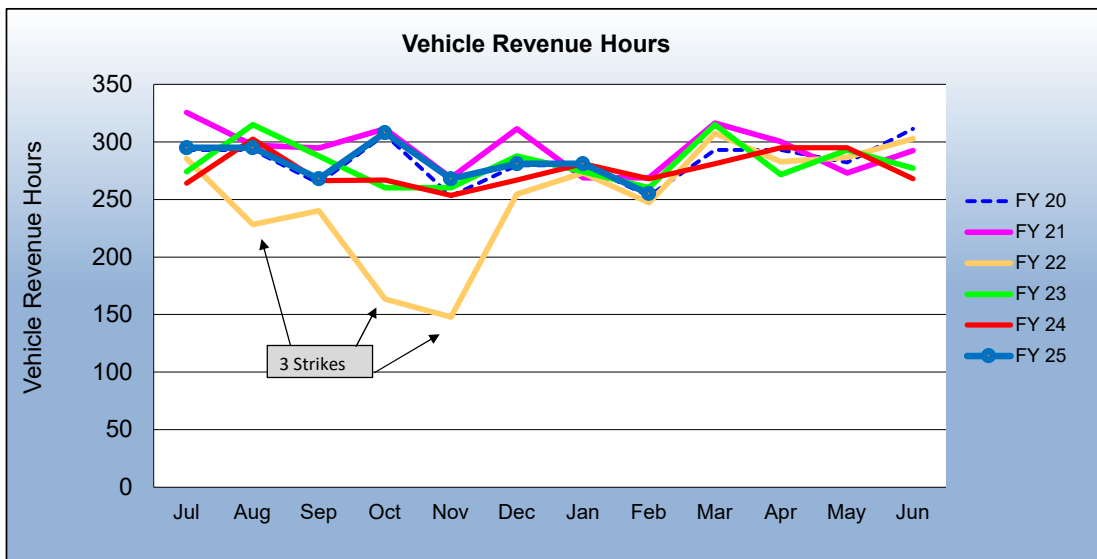
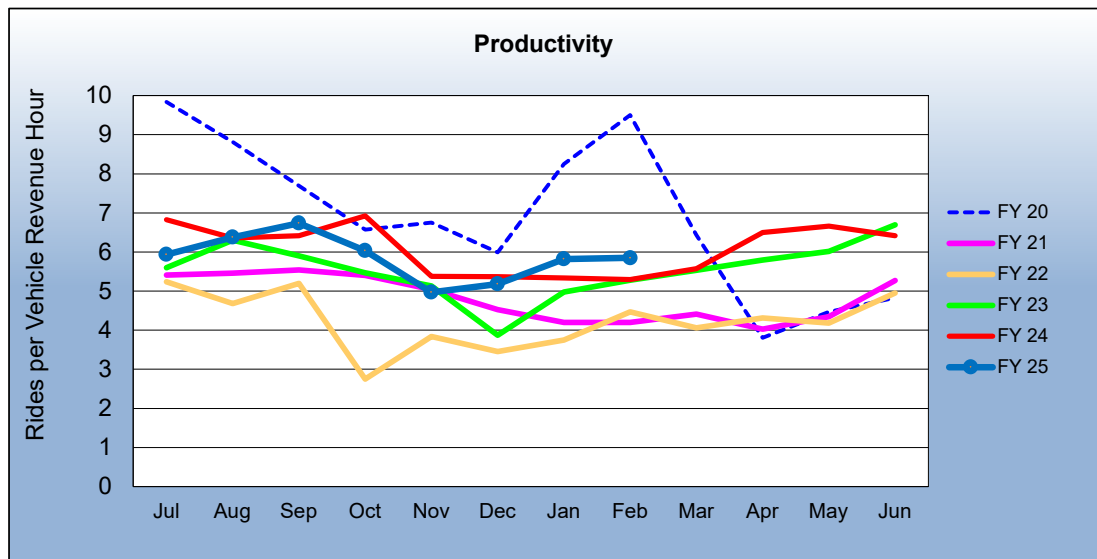
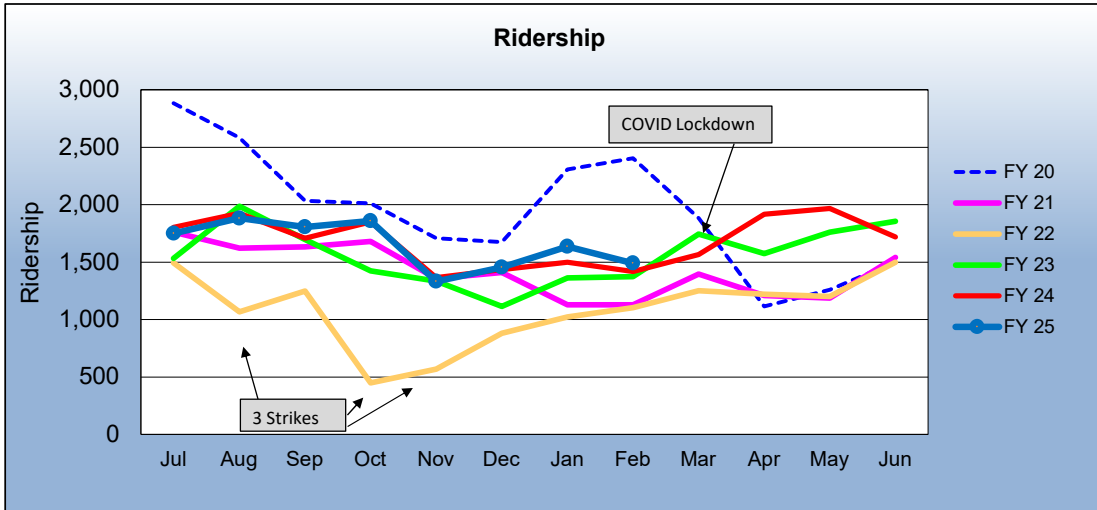
\* - Strikes occurred Aug 3-13, Sep 27-Oct 20, Nov 9-Dec 3, 2021

<b>RTC REGIONAL CONNECTOR - Carson Line</b>						
<b>Rolling 12 Month Comparison</b>						
<b>Most Recent 12 Months</b>			<b>Percent Change</b>	<b>Previous 12 Months</b>		
<b>Month</b>	<b>Year</b>	<b>Ridership</b>		<b>Month</b>	<b>Year</b>	<b>Ridership</b>
Mar	2024	1,567	-10.1%	Mar	2023	1,743
Apr		1,916	21.7%	Apr		1,575
May		1,965	11.5%	May		1,762
Jun		1,720	-7.3%	Jun		1,855
Jul		1,751	-2.8%	Jul		1,802
Aug		1,882	-2.2%	Aug		1,924
Sep		1,806	5.7%	Sep		1,708
Oct		1,859	0.5%	Oct		1,849
Nov		1,332	-2.4%	Nov		1,365
Dec		1,456	1.5%	Dec		1,434
Jan	2025	1,636	9.1%	Jan	2024	1,500
Feb		1,492	5.1%	Feb		1,419
<b>TOTAL</b>		<b>20,382</b>	<b>2.2%</b>	<b>TOTAL</b>		<b>19,936</b>

\* - Strikes occurred Aug 3-13, Sep 27-Oct 20, Nov 9-Dec 3, 2021

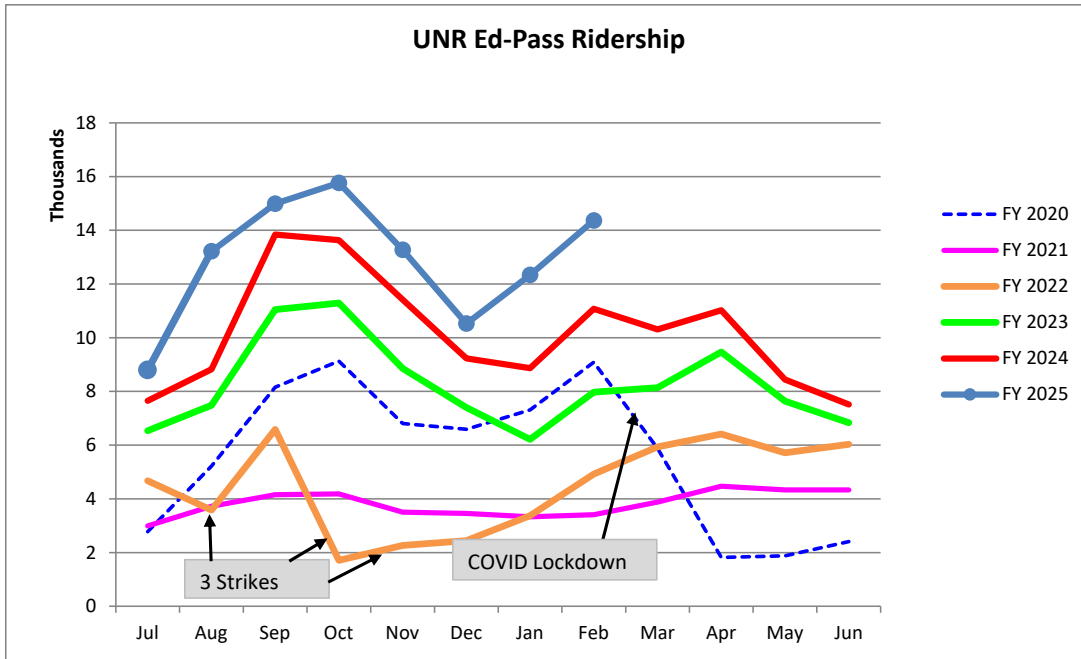


### RTC REGIONAL CONNECTOR Carson Line Fiscal Year Comparisons



**RTC Transit Fixed Route Bus Ridership Report  
University of Nevada, Reno Ed-Pass Program  
FY 2024**

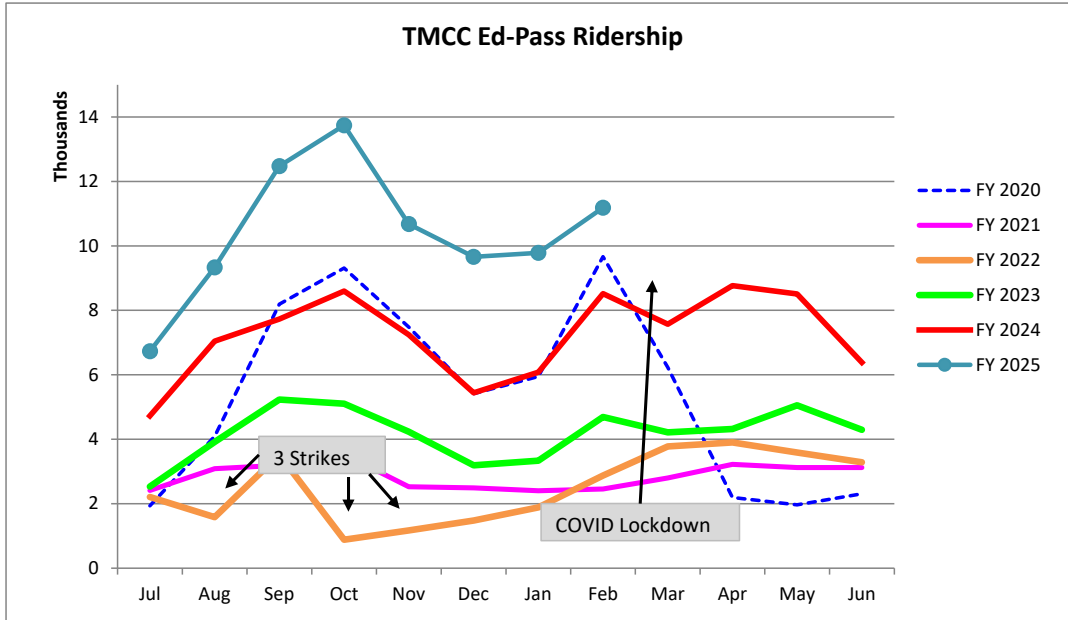
Category	Jul	Aug	Sep	Oct	Nov	Dec	Jan	Feb	Mar	Apr	May	Jun	FYTD
FY 2020	2,779	5,218	8,159	9,127	6,808	6,592	7,312	9,084	5,873	1,818	1,877	2,410	67,057
FY 2021	2,991	3,723	4,156	4,185	3,502	3,455	3,329	3,409	3,881	4,471	4,333	4,330	45,765
FY 2022	4,670	3,581	6,584	1,710	2,264	2,447	3,376	4,924	5,936	6,410	5,716	6,033	53,651
FY 2023	6,539	7,482	11,046	11,291	8,857	7,399	6,215	7,973	8,138	9,470	7,640	6,833	98,883
FY 2024	7,650	8,824	13,841	13,631	11,414	9,231	8,864	11,077	10,309	11,024	8,445	7,516	121,826
Percent Change	15%	50%	8.3%	16%	16%	14%	39%	30%					
FY 2025	8,797	13,215	14,988	15,763	13,269	10,523	12,336	14,363					



Fiscal Year	Rides
FY 2003	51,228
FY 2004	55,114
FY 2005	69,685
FY 2006	88,070
FY 2007	85,295
FY 2008	86,461
FY 2009	88,385
FY 2010	79,518
FY 2011	75,925
FY 2012	75,300
FY 2013	50,438
FY 2014	40,854
FY 2015	41,778
FY 2016	50,022
FY 2017	40,581
FY 2018	34,154
FY 2019	30,251
<b>U-Pass:</b>	
FY 2020	67,057
FY 2021	45,765
FY 2022	53,651
FY 2023	98,883
FY 2024	121,826

**RTC Transit Fixed Route Bus Ridership Report  
Truckee Meadows Community Ed-Pass Program  
FY 2024**

Category	Jul	Aug	Sep	Oct	Nov	Dec	Jan	Feb	Mar	Apr	May	Jun	FYTD
FY 2020	1,933	4,086	8,193	9,311	7,479	5,413	5,945	9,668	6,227	2,193	1,968	2,310	64,726
FY 2021	2,414	3,090	3,194	3,535	2,527	2,493	2,402	2,459	2,800	3,225	3,126	3,124	34,389
FY 2022	2,208	1,584	3,516	883	1,170	1,480	1,886	2,875	3,773	3,899	3,585	3,287	30,146
FY 2023	2,533	3,913	5,233	5,103	4,231	3,195	3,335	4,690	4,213	4,314	5,051	4,292	50,103
FY 2024	4,725	7,045	7,727	8,596	7,244	5,440	6,081	8,520	7,569	8,768	8,510	6,384	86,609
Percent Change	43%	32%	61%	60%	47%	78%	61%	31%					
FY 2025	6,734	9,334	12,476	13,741	10,681	9,659	9,785	11,186					



Fiscal Year	Rides
FY 2013	90,583
FY 2014	113,700
FY 2015	94,112
FY 2016	83,375
FY 2017	66,110
FY 2018	53,027
FY 2019	37,191

Ed-Pass:	Rides
FY 2020	64,726
FY 2021	34,389
FY 2022	30,146
FY 2023	50,103
FY 2024	86,609