



REGIONAL TRANSPORTATION COMMISSION

Public Transportation • Streets and Highways • Planning



RTC Transit Fixed Route Bus Operating Statistics

**RTC RIDE
RTC RAPID
RTC REGIONAL CONNECTOR**

March 2025

RTC Transit Fixed Route Bus Operating Statistics Report

TABLE OF CONTENTS

RTC Transit Fixed Route Bus Highlights..... Page ii

RTC Transit Fixed Route Bus Summary Page iv

System Reports.....Page 1

Economic DataPage 5

Route Comparison Data.....Page 7

Monthly Operating Statistics.....Page 9

RTC RAPID Virginia Line & Route 1Page 14

RTC RAPID Lincoln Line & Route 11Page 16

RTC REGIONAL CONNECTOR Carson LinePage 18

RTC TMCC and UNR Education PassPage 20

RTC Transit Fixed Route Bus Highlights

March 2025

RTC Transit Fixed Route Bus

- For the month of March, there were 479,876 rides, **up 8.5%** compared with last year (page 1). The weighted average daily ridership was 15,711, **up 8.4%** compared with last year (page 3).
- For the most recent 12 months, there were 5.72 million rides, **up 10.2%** compared with the previous 12 months.
- In March, there were 22,522 service hours, **up 0.01%** compared with last year (page 9).
- Productivity was 21.3 rides per service hour, **up 8.5%** compared with last year (page 9).

External Impacts on Ridership

- The average temperature this month was 45.7°F, 1.6° F lower compared with last year.
- The Reno-Sparks area preliminary unemployment rate in February was 4.8%. Unemployment has been gradually trending upward since a low of 2.8% in March 2021.
- Nevada's preliminary unemployment rate for February was 5.8%. The national unemployment rate for February was 4.1%.

Historical Impacts Causing a Downward Trend in Bus Ridership

- According to the Bureau of Labor Statistics, 27% of US employees worked remotely at least part of the time in 2023, with several academic surveys suggesting it is closer to 50%*.
- In April 2022, the City of Reno entered an agreement with Bird electric scooters to serve Reno.
- In 2021, Keolis transit workers went on strike August 3 to 13, September 27 to October 20, and November 9 to December 3. Limited service was provided on Routes 1, 7, and 11 and RTC REGIONAL CONNECTOR to Carson City. RTC provided free rides on RIDE, FlexRIDE, taxis, and UberX during the second and third strikes.
- A combination of the pandemic, stimulus checks, easy car financing, and gig jobs requiring cars has likely resulted in a large number of people abandoning transit for car ownership.
- In response to the COVID-19 pandemic, Governor Sisolak ordered the shutdown of casinos and other nonessential businesses in March 2020. In May 2020, Governor Sisolak reopened a number of businesses including bars, salons, gyms, and retail. Casinos were allowed to reopen in June 2020. In May 2021, maximum business capacity increased to 100% in Washoe County.
- There has been an increase in people working primarily from home, approximately eight million in 2018 according to US Census Bureau estimates, taking over transit as the second most common means of getting to work.
- While employment has increased in the region, the makeup of local employment has significantly changed. When Reno was a tourism and gaming town, a large portion of employment was in the low-wage, service industry whereas recently jobs tend to be higher wage and geographically dispersed requiring cars.
- Uber started permanent service in Reno in 2015 and Lyft started shortly after.
- As of 2014, Nevada provides driver's licenses for people who are undocumented immigrants.
- As downtown and midtown areas in-fill and gentrify, this also pushes lower income people to the suburbs where they are much more likely to need cars. This is a nationwide trend.
- The drop in ridership (before COVID) has been a nationwide trend as illustrated by the chart on page 4 which compares RTC transit ridership with US and Canadian bus ridership.
- With the growth of online shopping and food delivery, it is also likely that bus trips used for shopping and dining out has fallen substantially, especially for those with mobility challenges who would prefer online shopping and food delivery. Also, people without cars may decide to purchase a car with the intention of using the car to deliver food and finance the car.

* - <https://www.forbes.com/sites/forbesfinancecouncil/2023/11/06/changing-environment-altering-employer-obligations-for-remote-workers/?sh=7c9e531e2145>



RTC Transit Fixed Route Bus Summary

Route Ridership

- For March, Route 18 (serving Glendale) had the highest productivity with 27.1 rides per service hour.
- Route 1 (serving S Virginia St between downtown Reno and Meadowood Mall) came in second with 25.6.
- Route 2 (serving Ninth – Centennial Plaza) had the third highest productivity in the system with 23.7 rides per service hour (page 7).
- Route 12 (serving Terminal - Neil) ridership had the highest increase compared with last year by 22.0%.
- Route 16 (serving Idlewild) ridership had the second highest increase compared with last year by 20.8%.
- Route 11 (serving Fourth - Prater) had the third highest increase in ridership at 20.5%.

RTC RAPID (Virginia & Lincoln Lines Combined)

- This month, there were 122,799 rides on RTC RAPID, **up 5.5%** compared with last year. By comparison, system ridership was up 8.5%. The productivity of RTC RAPID at 25.9 rides per service hour was **up 6.1%** compared with last year. By comparison, system productivity was 21.3 rides per service hour, **up 8.5%** compared with last year.
- There were 1.44 million rides over the most recent 12 months, **up 2.6%** compared with the previous 12 months.
- RAPID rides now make up 25.6% of system ridership.
- 45.3% of all system rides were taken on RAPID and Routes 1 and 11.

RTC RAPID Virginia Line

- This month, there were 83,839 rides on the Virginia Line **up 4.0%** compared with last year. Productivity at 26.1 rides per service hour is **up 5.0%** compared with last year.
- Ridership for both the Virginia Line and Route 1 was 117,198 **up 1.6%** compared with last year (page 14). There were 1.39 million rides over the most recent 12 months, **up 1.4%** compared with the previous 12 months.

RTC RAPID Lincoln Line

- This month, there were 38,960 rides on the Lincoln Line **up 8.7%** compared with last year. Productivity at 25.5 rides per service hour is **up 8.7%** compared with last year.
- Ridership for both the Lincoln Line and Route 11 was 100,033, **up 16%** compared with last year (page 16). There were 1.17 million rides for the most recent 12 months, **up 22%** compared with the previous 12 months.

RTC REGIONAL CONNECTOR Carson Line

- There were 1,798 rides this month, **up 15%** compared with last March (page 18). At 6.4 rides per service hour, productivity is **up 15%** compared to last year. There were 20,613 rides for the most recent 12 months, **up 4.3 %** compared with the previous 12 months.

RTC TMCC and UNR Education Pass

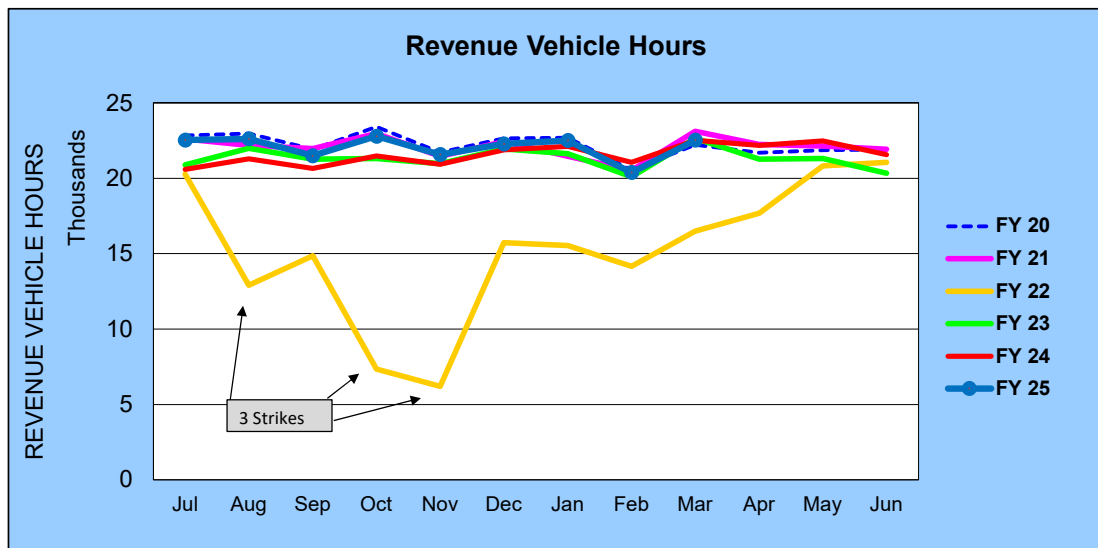
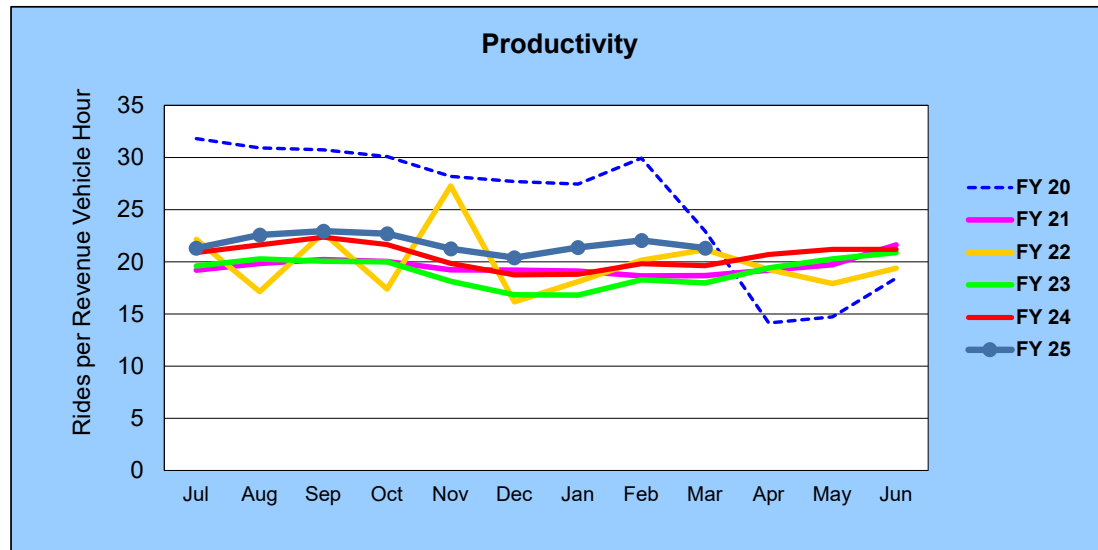
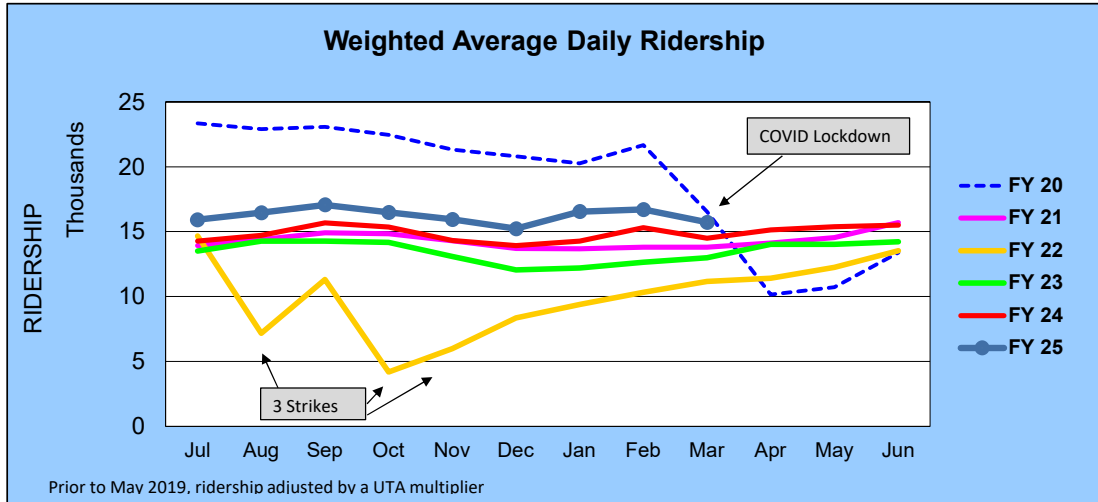
- There were 14,216 UNR Ed-Pass rides, **up 38%** compared with last year (page 20).
- There were 10,294 TMCC Ed-Pass rides, **up 36%** compared with last year.

RTC Transit Fixed Route Bus						
Rolling 12-Month Ridership Comparison						
Most Recent 12 Months			Percent Change	Previous 12 Months		
Month	Year	Ridership		Month	Year	Ridership
Apr	2024	459,351	11.3%	Apr	2023	412,674
May		476,695	10.3%	May		432,170
Jun		456,808	7.5%	Jun		425,106
Jul		480,395	11.8%	Jul		429,718
Aug		510,365	10.9%	Aug		460,384
Sep		493,117	6.8%	Sep		461,670
Oct		516,977	11.1%	Oct		465,243
Nov		458,480	10.3%	Nov		415,646
Dec		454,469	10.8%	Dec		410,240
Jan	2025	481,095	15.6%	Jan	2024	416,157
Feb		449,541	7.8%	Feb		417,018
Mar		479,876	8.5%	Mar		442,102
TOTAL		5,717,169	10.2%	TOTAL		5,188,128

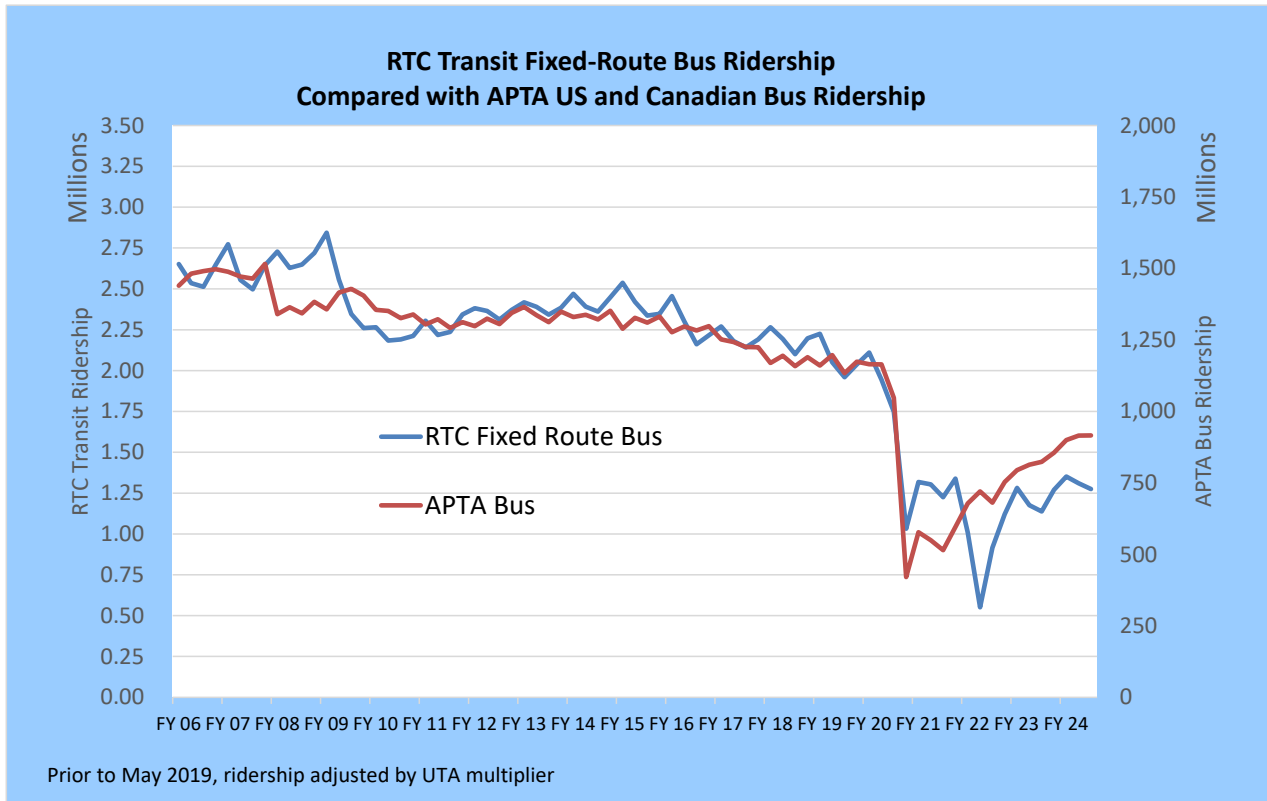
RTC Transit includes RTC RIDE, RTC RAPID, & RTC REGIONAL CONNECTOR

RTC Transit Fixed Route Bus

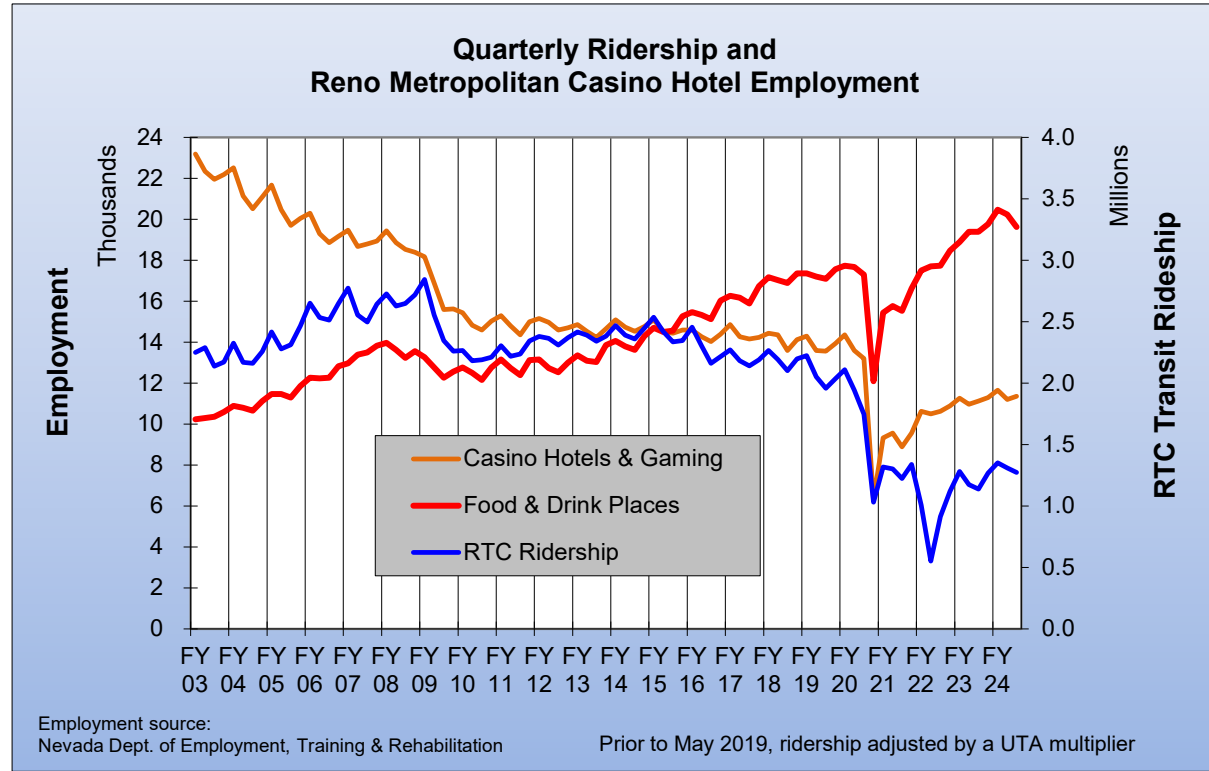
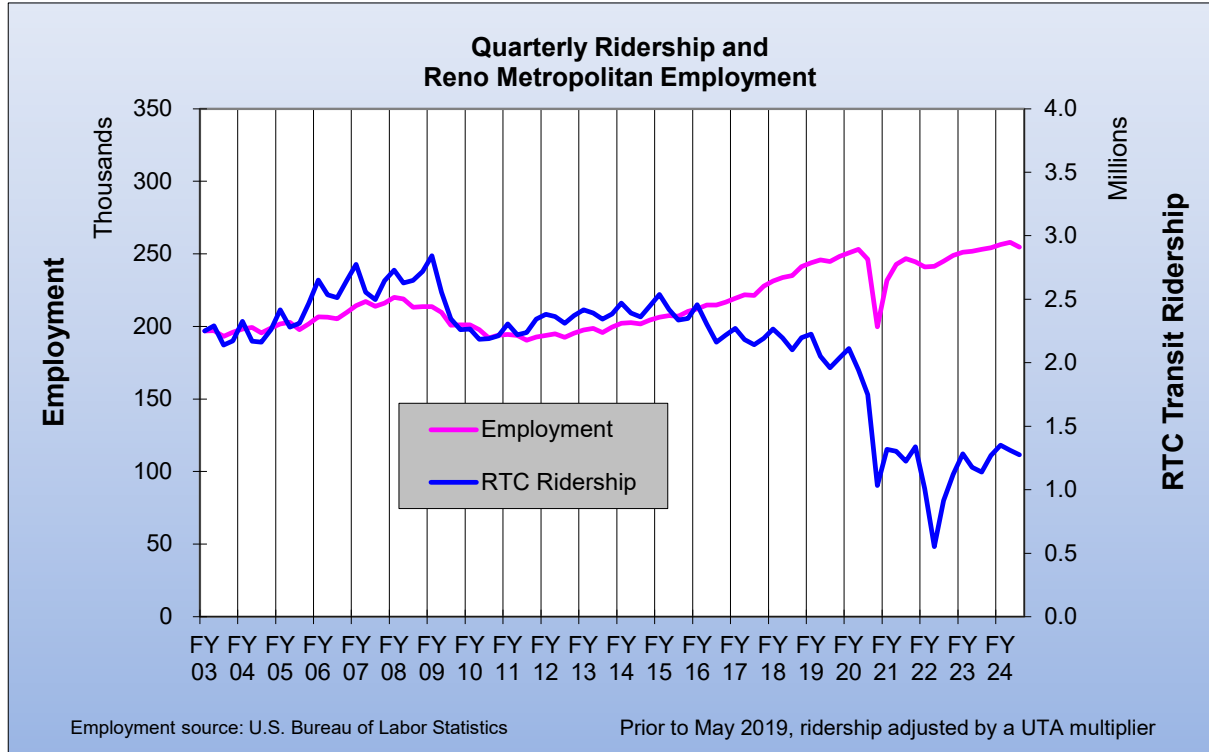
FISCAL YEAR COMPARISONS



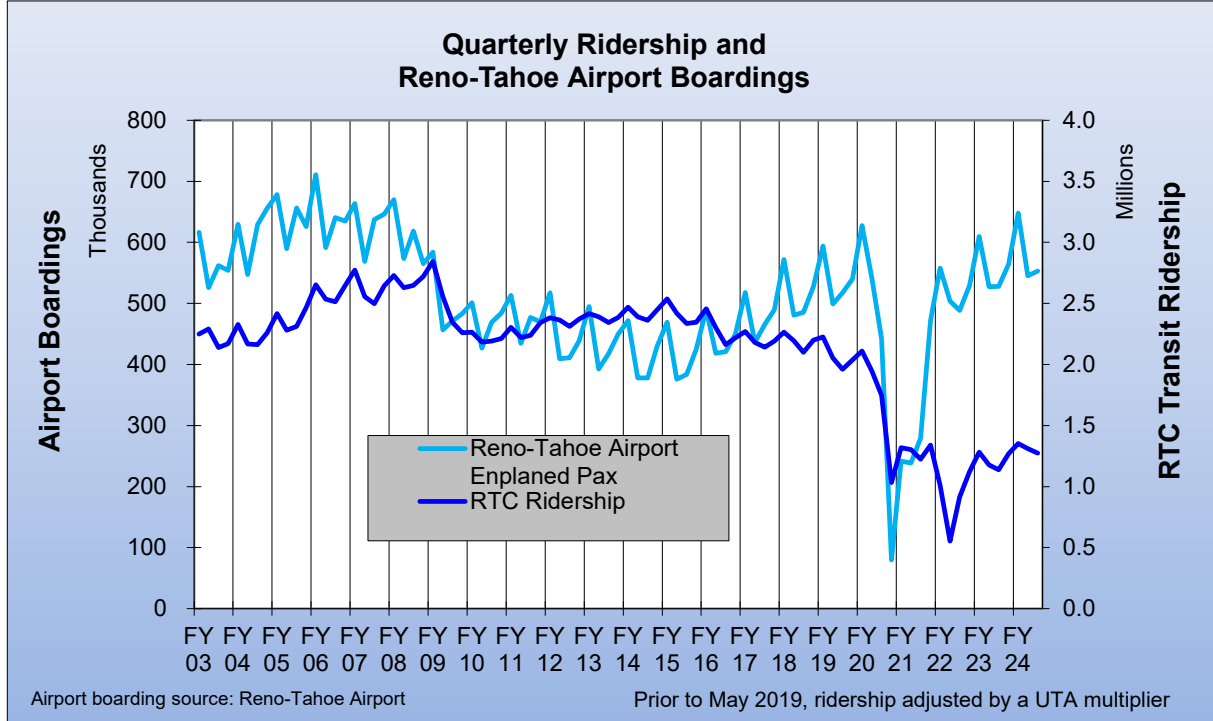
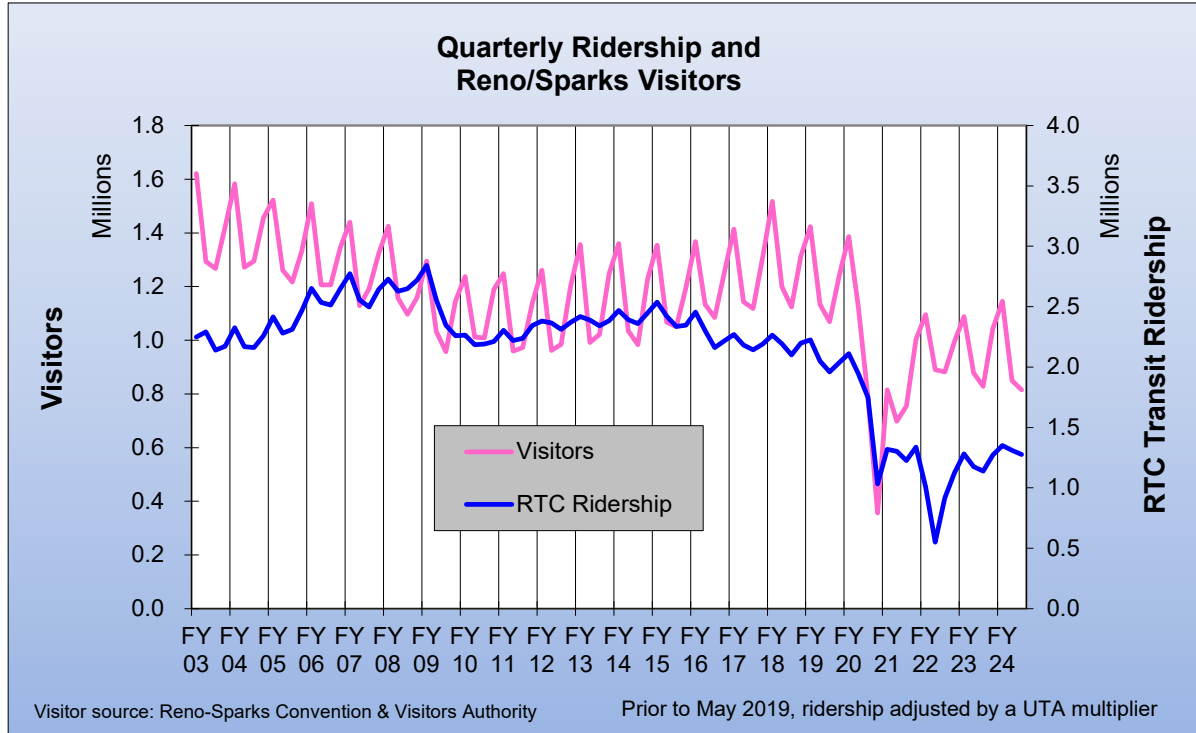
RTC Transit Fixed-Route Bus						
Weighted Average Daily Ridership Rolling 12-Month Ridership Comparison						
Most Recent 12 Months			Percent Change	Previous 12 Months		
Month	Year	Ridership		Month	Year	Ridership
Apr	2024	15,129	7.9%	Apr	2023	14,016
May		15,373	9.7%	May		14,008
Jun		16,157	13.6%	Jun		14,227
Jul		15,924	11.7%	Jul		14,257
Aug		16,462	12.0%	Aug		14,698
Sep		17,068	8.9%	Sep		15,675
Oct		16,494	7.4%	Oct		15,353
Nov		15,951	11.4%	Nov		14,320
Dec		15,235	9.4%	Dec		13,931
Jan	2025	16,546	16.0%	Jan	2024	14,262
Feb		16,707	9.2%	Feb		15,294
Mar		15,711	8.4%	Mar		14,500



RTC Transit Fixed-Route Bus



RTC Transit Fixed-Route Bus



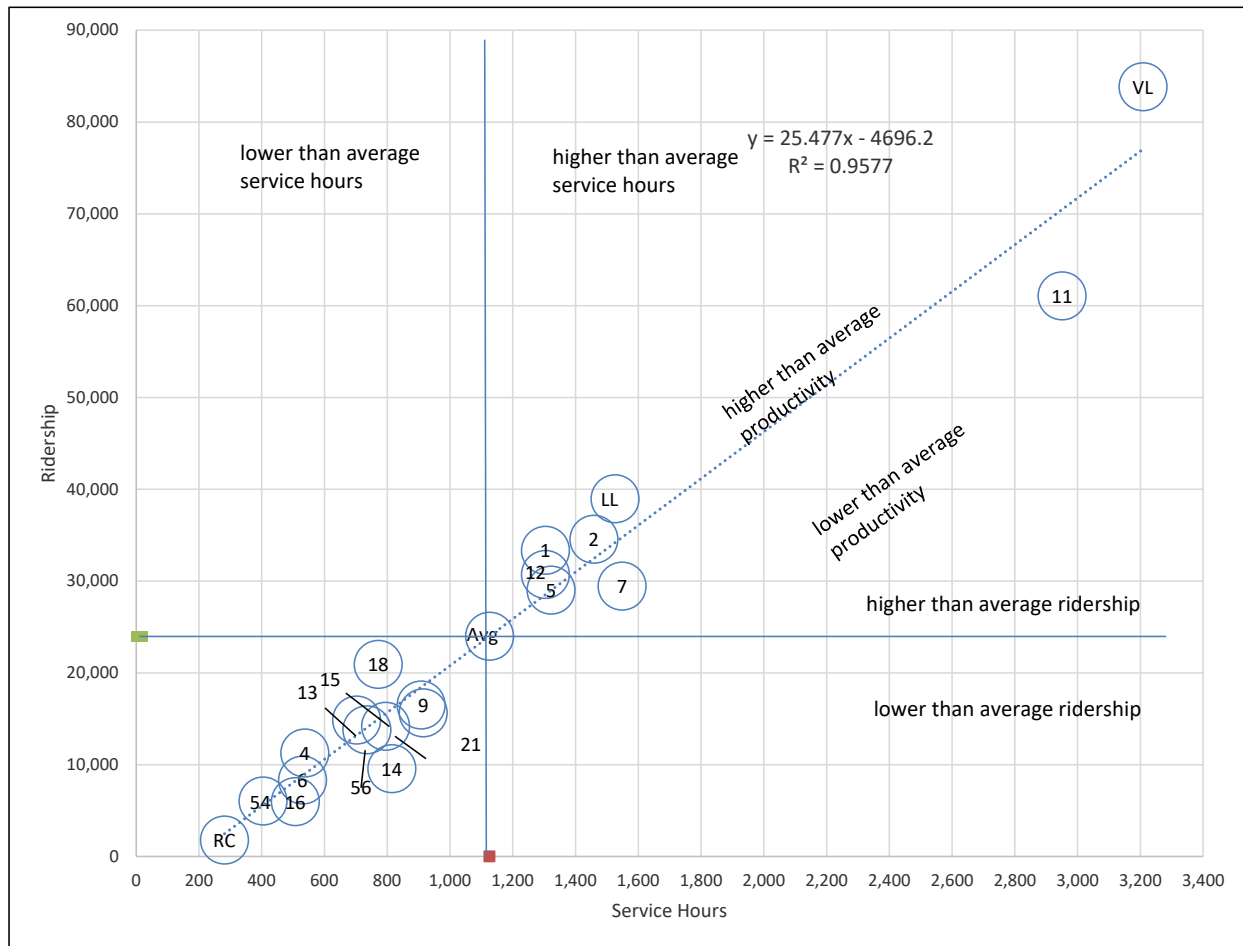
RTC Route Comparison Report

Mar 2025

Route *	Product- ivity	Route	Svs Hours Change Fr. Last Year	Route	Ridership	Route	Ridership Change From Last Year
18	27.1	5	10.1%	RAP VL	83,839	12	22.0%
RAP VL	26.1	21	6.8%	11	61,073	16	20.8%
1	25.6	7	3.5%	RAP LL	38,960	11	20.5%
RAP LL	25.5	9	0.8%	2	34,560	6	20.0%
2	23.7	12	0.1%	1	33,359	54	16.2%
12	23.6	18	0.1%	12	30,715	21	15.7%
5	22.0	TOTAL	0.0%	7	29,446	RTC RC	14.7%
TOTAL	21.3	RAP LL	0.0%	5	29,023	13	13.4%
13	21.2	4	0.0%	18	20,924	56	11.1%
4	21.0	6	0.0%	9	16,494	14	10.2%
11	20.7	13	0.0%	21	15,645	RAP LL	8.7%
7	19.0	15	0.0%	13	14,857	TOTAL	8.5%
56	18.8	16	0.0%	15	14,189	2	8.5%
9	18.2	54	0.0%	56	13,800	7	8.2%
15	17.9	56	0.0%	4	11,270	9	6.5%
21	17.1	RTC RC	0.0%	14	9,573	5	6.1%
6	15.7	14	0.0%	6	8,327	RAP VL	4.1%
54	15.0	2	0.0%	54	6,051	18	2.4%
16	11.8	1	0.0%	16	5,973	15	1.3%
14	11.8	RAP VL	-0.9%	RTC RC	1,798	1	-4.2%
RTC RC	6.4	11	-6.7%	TOTAL	479,876	4	-8.4%

* - RTC RC is RTC REGIONAL CONNECTOR.

RTC Route Comparison Chart Mar 2025



"higher" and "lower" refer to higher or lower than the average of all routes (not the system average)

RTC TRANSIT OPERATING STATISTICS

Mar 2025

Route	Total Ridership	Previous Year	Change	Vehicle Revenue Hours	Previous Year	Change	Rides/ VRH	Previous Year	Change
RAPID VL	83,839	80,554	4%	3,208	3,236	-1%	26.1	24.9	5%
RAPID LL	38,960	35,845	9%	1,526	1,526	0%	25.5	23.5	9%
1	33,359	34,825	-4%	1,304	1,304	0%	25.6	26.7	-4%
2	34,560	31,848	9%	1,459	1,459	0%	23.7	21.8	9%
4	11,270	12,310	-8%	537	537	0%	21.0	22.9	-8%
5	29,023	27,352	6%	1,322	1,201	10%	22.0	22.8	-4%
6	8,327	6,941	20%	530	530	0%	15.7	13.1	20%
7	29,446	27,202	8%	1,548	1,496	3%	19.0	18.2	5%
9	16,494	15,488	6%	908	900	1%	18.2	17.2	6%
11	61,073	50,667	21%	2,951	3,162	-7%	20.7	16.0	29%
12	30,715	25,181	22%	1,304	1,302	0%	23.6	19.3	22%
13	14,857	13,099	13%	702	702	0%	21.2	18.6	13%
14	9,573	8,683	10%	814	814	0%	11.8	10.7	10%
15	14,189	14,012	1%	795	795	0%	17.9	17.6	1%
16	5,973	4,943	21%	507	507	0%	11.8	9.8	21%
18	20,924	20,437	2%	771	771	0%	27.1	26.5	2%
21	15,645	13,522	16%	914	856	7%	17.1	15.8	8%
54	6,051	5,207	16%	404	404	0%	15.0	12.9	16%
56	13,800	12,419	11%	735	735	0%	18.8	16.9	11%
RC Carson	1,798	1,567	15%	281	281	0%	6.4	5.6	15%
Misc. Service		0	N/A	0	0	N/A			
Mar 2025	479,876	442,102	8.5%	22,522	22,520	0.01%	21.3	19.6	8.5%
Mar '24	442,102			22,520			19.6		
Perc. Change	8.5%			0.01%			8.5%		

RTC TRANSIT OPERATING STATISTICS

Mar 2025

Route	Vehicle Revenue Miles	Rides/ VRM	Est. Gross Operating Cost	Est. Cost Per Per VRH	Est. Cost Per VRM	Est. Cost Per Ride
RAPID VL	33,219	2.52	\$528,874	\$165	\$15.92	\$6.31
RAPID LL	14,719	2.65	\$251,549	\$165	\$17.09	\$6.46
1	12,924	2.58	\$214,951	\$165	\$16.63	\$6.44
2	15,293	2.26	\$240,442	\$165	\$15.72	\$6.96
4	6,962	1.62	\$88,557	\$165	\$12.72	\$7.86
5	16,068	1.81	\$217,953	\$165	\$13.56	\$7.51
6	4,910	1.70	\$87,371	\$165	\$17.79	\$10.49
7	26,638	1.11	\$255,202	\$165	\$9.58	\$8.67
9	10,235	1.61	\$149,632	\$165	\$14.62	\$9.07
11	31,234	1.96	\$486,408	\$165	\$15.57	\$7.96
12	13,187	2.33	\$215,003	\$165	\$16.30	\$7.00
13	6,479	2.29	\$115,794	\$165	\$17.87	\$7.79
14	7,847	1.22	\$134,250	\$165	\$17.11	\$14.02
15	8,184	1.73	\$131,025	\$165	\$16.01	\$9.23
16	3,510	1.70	\$83,566	\$165	\$23.81	\$13.99
18	8,385	2.50	\$127,174	\$165	\$15.17	\$6.08
21	9,994	1.57	\$150,725	\$165	\$15.08	\$9.63
54	6,492	0.93	\$66,657	\$165	\$10.27	\$11.02
56	10,836	1.27	\$121,212	\$165	\$11.19	\$8.78
RC Carson	8,457	0.21	\$46,389	\$165	\$5.49	\$25.80
Misc. Service	0					
Mar 2025	255,573	1.88	\$3,712,732	\$165	\$14.53	\$7.74
Mar '24	251,106	1.76	\$3,555,118	\$158	\$14.16	\$8.04
Perc. Change	1.8%	7%	4.4%	4.4%	2.6%	-4%

RTC Transit Operating Statistics

Apr 24 - Mar '25

Route	Total Ridership	Previous Year	Change	Vehicle Revenue Hours	Previous Year	Change	Rides/ VRH	Previous Year	Change
RAPID VL	982,180	955,312	3%	37,913	37,200	2%	25.9	25.7	1%
RAPID LL	459,914	450,429	2%	18,030	17,715	2%	25.5	25.4	0%
1	412,365	419,398	-2%	15,365	15,667	-2%	26.8	26.8	0%
2	404,759	372,649	9%	17,192	17,176	0%	23.5	21.7	9%
4	149,564	145,146	3%	6,341	6,397	-1%	23.6	22.7	4%
5	367,699	336,490	9%	14,644	14,151	3%	25.1	23.8	6%
6	94,375	81,204	16%	6,253	6,195	1%	15.1	13.1	15%
7	369,471	325,514	14%	17,866	18,189	-2%	20.7	17.9	16%
9	201,289	173,546	16%	10,761	10,860	-1%	18.7	16.0	17%
11	708,052	507,722	39%	34,847	28,717	21%	20.3	17.7	15%
12	343,809	286,430	20%	15,462	13,898	11%	22.2	20.6	8%
13	174,432	151,853	15%	8,317	8,139	2%	21.0	18.7	12%
14	113,668	103,017	10%	9,653	9,439	2%	11.8	10.9	8%
15	180,211	162,448	11%	9,426	9,282	2%	19.1	17.5	9%
16	72,356	53,892	34%	5,993	5,818	3%	12.1	9.3	30%
18	244,322	252,746	-3%	9,181	9,188	0%	26.6	27.5	-3%
21	182,134	161,682	13%	10,723	9,789	10%	17.0	16.5	3%
54	71,188	67,521	5%	4,773	4,881	-2%	14.9	13.8	8%
56	164,768	138,730	19%	8,738	7,946	10%	18.9	17.5	8%
RC Carson	20,613	19,760	4%	3,390	3,293	3%	6.1	6.0	1%
Misc. Service									
Current 12 Months	5,717,169	5,188,128	10.2%	264,870	255,392	3.7%	21.6	20.3	6.3%
Previous 12 Months	5,188,128			255,392			20.3		
Perc. Change	10.2%			3.7%			6.3%		

RTC Transit Operating Statistics

Apr 24 - Mar '25

Route	Vehicle Revenue Miles (thousand)	Rides/VRM	Est. Gross Operating Cost (thousand)	Est. Cost Per VRH	Est. Cost Per VRM	Est. Cost Per Ride
RAPID VL	388.8	2.53	\$6,184	\$163	\$15.90	\$6.30
RAPID LL	173.7	2.65	\$2,941	\$163	\$16.93	\$6.39
1	152.1	2.71	\$2,506	\$163	\$16.48	\$6.08
2	180.2	2.25	\$2,804	\$163	\$15.56	\$6.93
4	82.2	1.82	\$1,034	\$163	\$12.59	\$6.91
5	191.0	1.93	\$2,389	\$163	\$12.51	\$6.50
6	57.9	1.63	\$1,020	\$163	\$17.60	\$10.81
7	313.9	1.18	\$2,914	\$163	\$9.28	\$7.89
9	121.1	1.66	\$1,755	\$163	\$14.49	\$8.72
11	366.8	1.93	\$5,683	\$163	\$15.50	\$8.03
12	156.3	2.20	\$2,522	\$163	\$16.13	\$7.34
13	76.5	2.28	\$1,356	\$163	\$17.73	\$7.78
14	93.1	1.22	\$1,574	\$163	\$16.92	\$13.85
15	97.0	1.86	\$1,537	\$163	\$15.85	\$8.53
16	41.6	1.74	\$978	\$163	\$23.49	\$13.51
18	99.8	2.45	\$1,497	\$163	\$15.01	\$6.13
21	117.2	1.55	\$1,749	\$163	\$14.93	\$9.60
54	76.6	0.93	\$779	\$163	\$10.16	\$10.94
56	128.8	1.28	\$1,425	\$163	\$11.07	\$8.65
RC Carson	101.9	0.20	\$553	\$163	\$5.43	\$26.82
Misc. Service						
Current 12 Months	3,016.5	1.90	\$43,201	\$163	\$14.32	\$7.56
Previous 12 Months	2,868.8	1.81	\$39,098	\$153	\$13.63	\$7.54
Perc. Change	5.1%	4.8%	10.5%	6.5%	5.1%	0.3%

March

Apr 2024 - Mar 2025

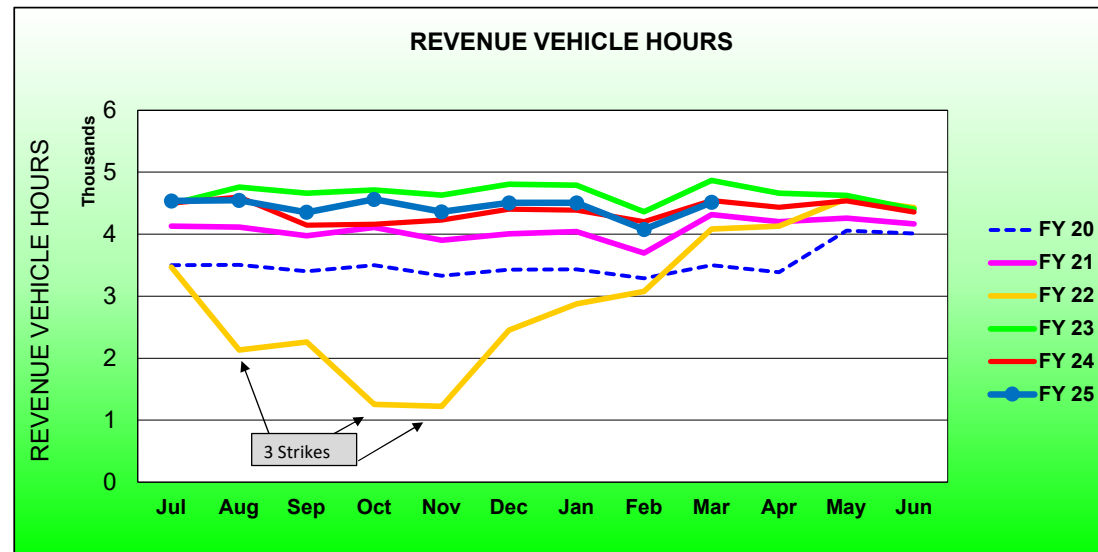
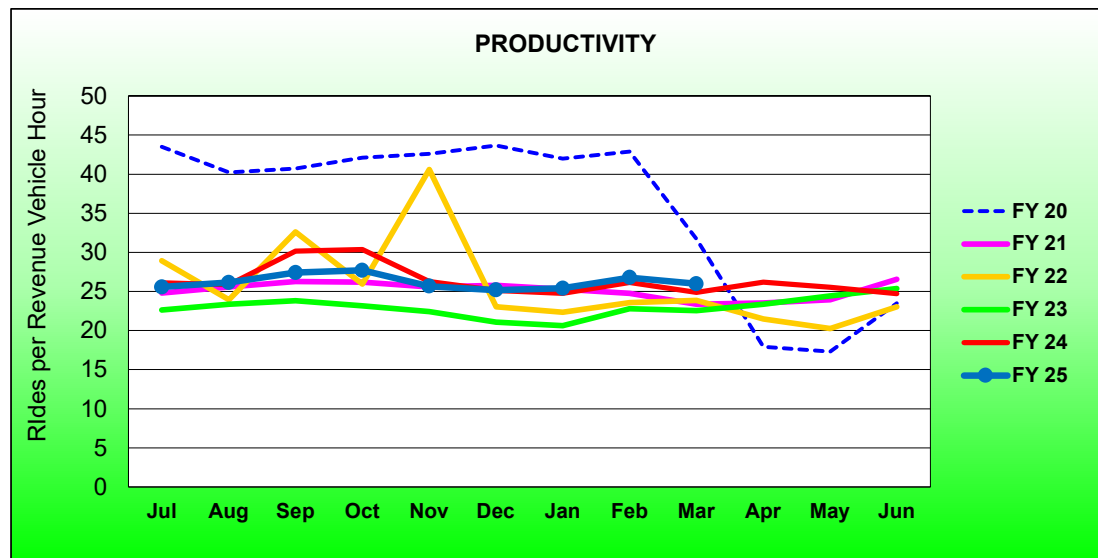
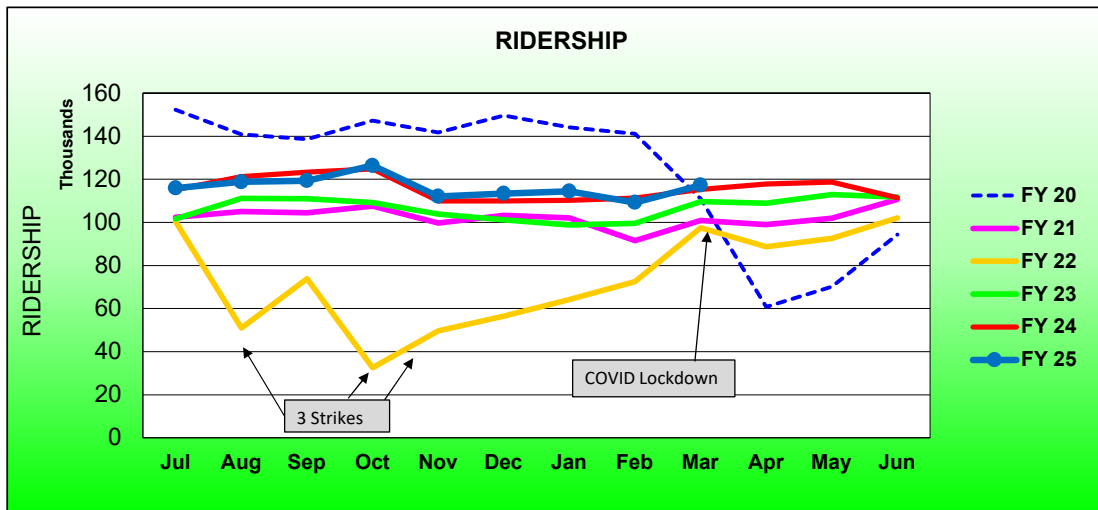
	2024	2023	Percent Change	Current 12 Months	Previous 12 Month	Percent Change
Single Ride Cash						
Full Fare	3,329	3,849	-14%	45,895	58,468	-22%
Reduced*	5,656	5,693	-0.6%	73,774	83,463	-12%
RTC ACCESS ID	183	405	-55%	3,191	4,151	-23%
Total	9,168	9,947	-8%	122,860	146,082	-16%
Day Pass Cash						
Full Fare	49,276	56,674	-13%	642,491	682,118	-5.8%
Reduced*	62,990	65,870	-4.4%	788,565	825,604	-4.5%
Total	112,266	122,544	-8%	1,431,056	1,507,722	-5.1%
Pre-Purchase Period Pass						
Full Fare	121,894	115,917	5%	1,435,655	1,321,001	9%
Reduced*	170,026	144,587	18%	1,948,172	1,605,176	21%
Total	291,920	260,504	12%	3,383,827	2,926,177	16%
Transfers	483	233	107%	3,821	1,850	107%
Flow Through	10,697	4,929	117%	84,389	62,462	35%
Free Rides	27,861	22,552	24%	385,160	311,127	24%
U/Ed-Pass Free Rides	24,510	17,878	37%	268,700	195,406	38%
Stored Ride Pass	2,970	3,516	-15.5%	36,591	37,297	-1.9%
Full Fare	192,030	190,229	0.9%	2,337,542	2,245,560	4.1%
Reduced*	287,759	251,693	14%	3,378,196	2,941,085	15%
Total Ridership	479,876	442,102	8.5%	5,717,169	5,188,128	10%
Previous 12 Months	442,102			5,188,128		
Change	8.5%			10.2%		
Vehicle Revenue Hours	22,522	22,520	0.01%	264,870	255,392	3.7%
Previous 12 Months	22,520			255,392		
Change	0.01%			3.7%		
Rides / VRH	21.3	19.6	8.5%	21.6	20.3	6.3%
Previous 12 Months	19.6			20.3		
Change	8.5%			6.3%		
Vehicle Revenue Miles	255,573	251,106	1.8%	3,016,454	2,868,807	5.1%
Rides / VRM	1.88	1.76	6.6%	1.90	1.81	4.8%
Est. Gross Operating Cost	\$3,712,732	\$3,555,118	4.4%	\$43,201,186	\$39,097,709	10.5%
Est. Cost Per VRH	\$165	\$158	4.4%	\$163.10	\$153.09	6.5%
Est. Cost Per VRM	\$14.53	\$14.16	2.6%	\$14.32	\$13.63	5.1%
Est. Cost Per Ride	\$7.74	\$8.04	-3.8%	\$7.56	\$7.54	0.3%

* - Reduced fare includes Youth, Senior, Disabled, and US Veterans

RTC RAPID Virginia Line and Route 1						
ROLLING 12-MONTH COMPARISON						
Most Recent 12 Months			Percent Change	Previous 12 Months		
Month	Year	Ridership		Month	Year	Ridership
Apr	2024	117,811	8.1%	Apr	2023	108,968
May		118,653	5.1%	May		112,931
Jun		111,479	-0.2%	Jun		111,746
Jul		115,958	0.7%	Jul		115,149
Aug		118,809	-2.0%	Aug		121,197
Sep		119,329	-3.2%	Sep		123,298
Oct		126,372	1.3%	Oct		124,715
Nov		111,991	1.9%	Nov		109,893
Dec		113,334	3.1%	Dec		109,966
Jan	2025	114,436	3.8%	Jan	2024	110,229
Feb		109,175	-1.9%	Feb		111,239
Mar		117,198	1.6%	Mar		115,379
TOTAL		1,394,545	1.4%	TOTAL		1,374,710

* - Strikes occurred Aug 3-13, Sep 27-Oct 20, Nov 9-Dec 3, 2021

RTC RAPID Virginia Line and Route 1 Fiscal Year Comparisons



RTC RAPID Lincoln Line and Route 11						
Rolling 12-Month Comparison						
Most Recent 12 Months			Percent Change	Previous 12 Months		
Month	Year	Ridership		Month	Year	Ridership
Apr	2024	90,650	43%	Apr	2023	63,439
May		94,524	27%	May		74,197
Jun		91,699	20%	Jun		76,479
Jul		97,939	21%	Jul		81,268
Aug		105,967	24%	Aug		85,588
Sep		100,874	17%	Sep		86,016
Oct		104,465	21%	Oct		86,638
Nov		94,528	23%	Nov		76,791
Dec		94,246	21%	Dec		77,855
Jan	2025	100,102	22%	Jan	2024	82,348
Feb		92,939	15%	Feb		81,020
Mar		100,033	16%	Mar		86,512
TOTAL		1,167,966	22%	TOTAL		958,151

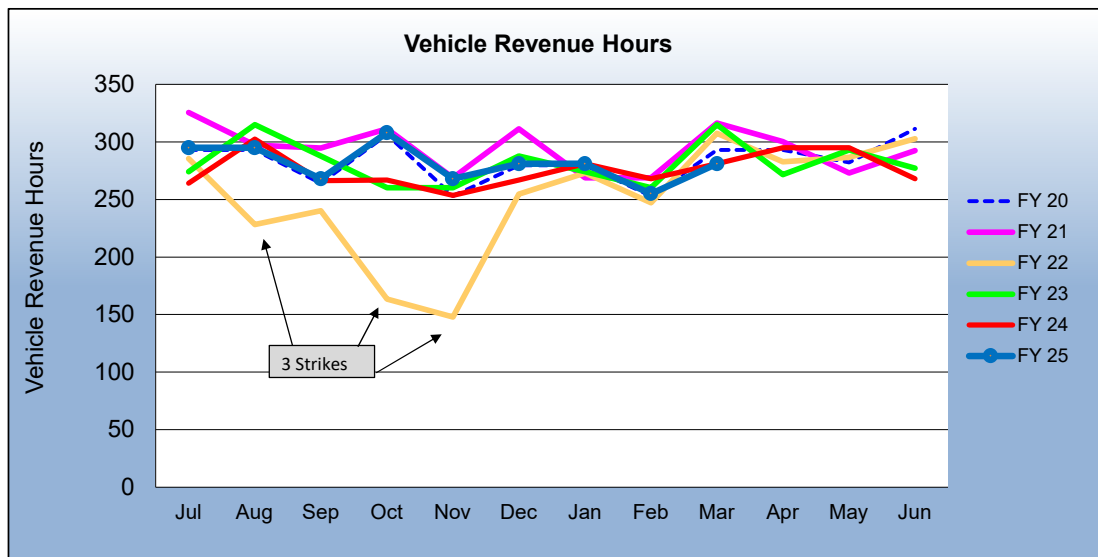
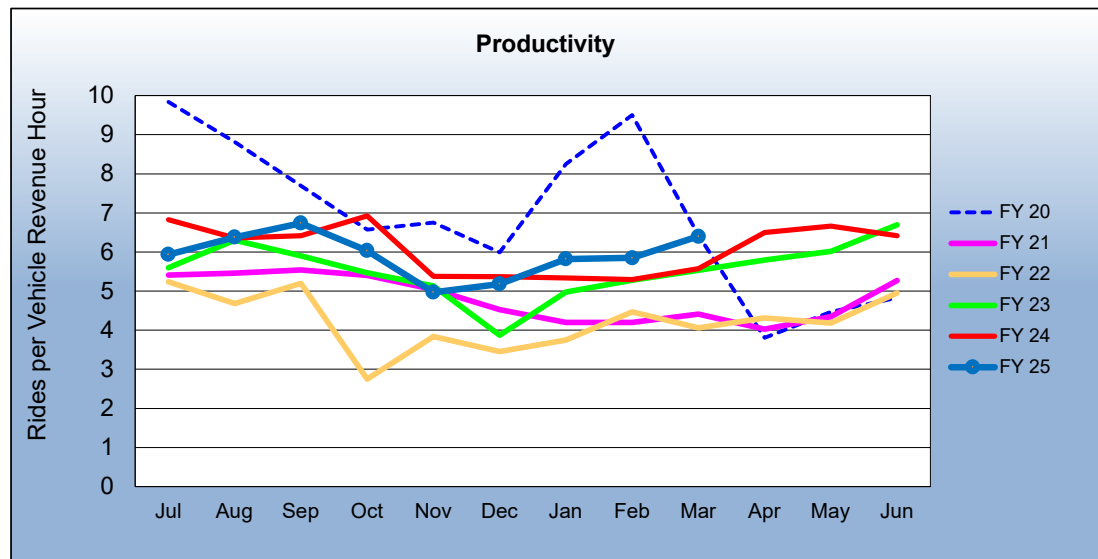
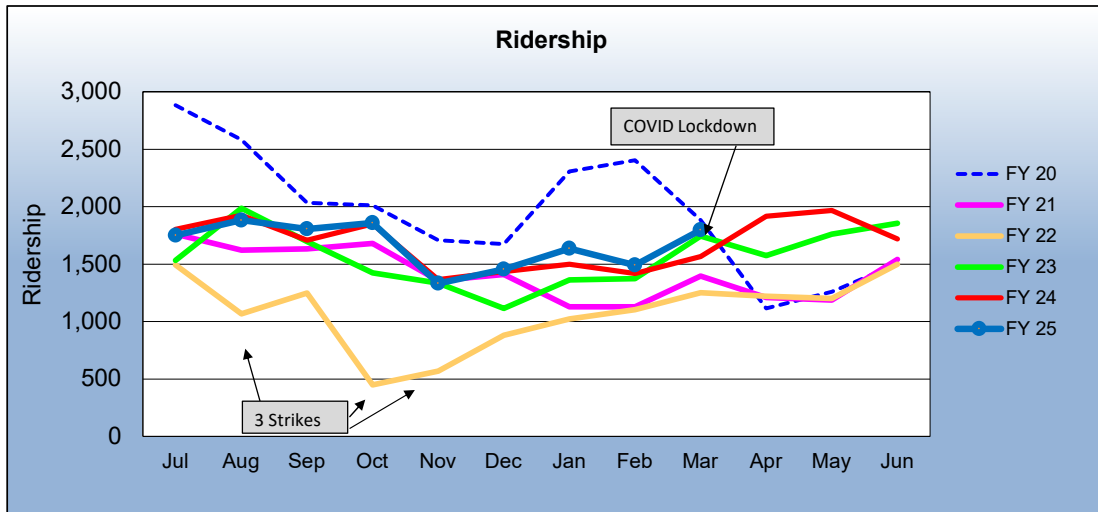
RTC RAPID Virginia & Lincoln Lines						
ROLLING 12-MONTH COMPARISON						
Most Recent 12 Months			Percent Change	Previous 12 Months		
Month	Year	Ridership		Month	Year	Ridership
Apr	2024	120,299	14%	Apr	2023	105,548
May		122,131	5.1%	May		116,256
Jun		113,689	-2.7%	Jun		116,866
Jul		117,265	-2.7%	Jul		120,564
Aug		121,538	-5.3%	Aug		128,312
Sep		122,911	-3.4%	Sep		127,255
Oct		129,927	2.0%	Oct		127,380
Nov		117,096	4.8%	Nov		111,741
Dec		118,408	5.6%	Dec		112,141
Jan	2025	120,884	8.5%	Jan	2024	111,384
Feb		115,147	2.9%	Feb		111,895
Mar		122,799	5.5%	Mar		116,399
TOTAL		1,442,094	2.6%	TOTAL		1,405,741

* - Strikes occurred Aug 3-13, Sep 27-Oct 20, Nov 9-Dec 3, 2021

RTC REGIONAL CONNECTOR - Carson Line						
Rolling 12 Month Comparison						
Most Recent 12 Months			Percent Change	Previous 12 Months		
Month	Year	Ridership		Month	Year	Ridership
Apr	2024	1,916	21.7%	Apr	2023	1,575
May		1,965	11.5%	May		1,762
Jun		1,720	-7.3%	Jun		1,855
Jul		1,751	-2.8%	Jul		1,802
Aug		1,882	-2.2%	Aug		1,924
Sep		1,806	5.7%	Sep		1,708
Oct		1,859	0.5%	Oct		1,849
Nov		1,332	-2.4%	Nov		1,365
Dec		1,456	1.5%	Dec		1,434
Jan	2025	1,636	9.1%	Jan	2024	1,500
Feb		1,492	5.1%	Feb		1,419
Mar		1,798	14.7%	Mar		1,567
TOTAL		20,613	4.3%	TOTAL		19,760

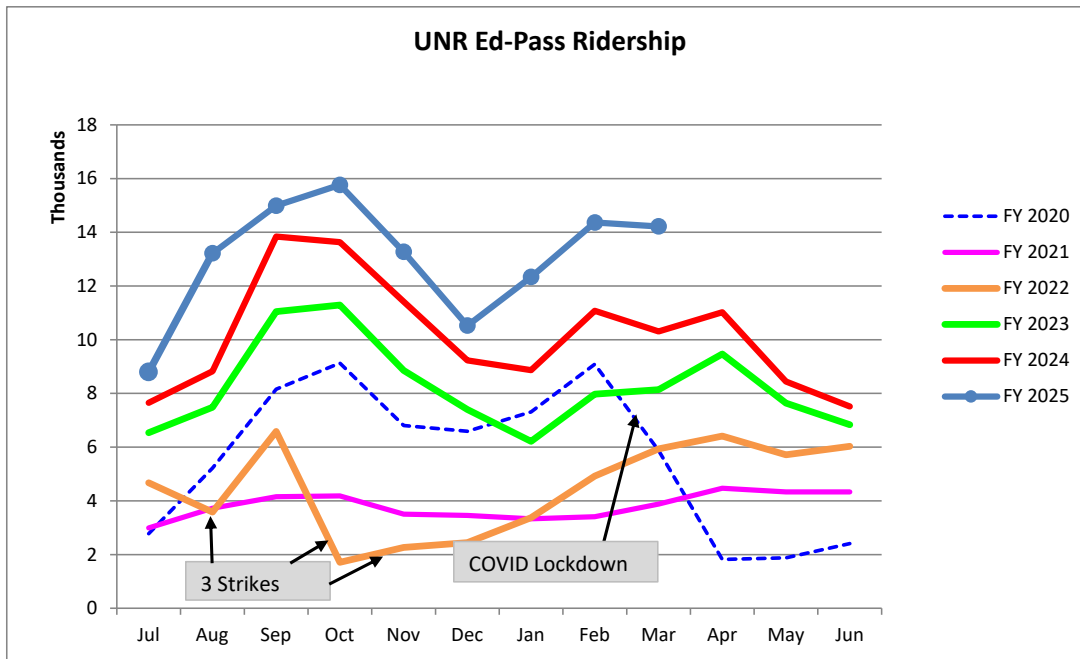
* - Strikes occurred Aug 3-13, Sep 27-Oct 20, Nov 9-Dec 3, 2021

RTC REGIONAL CONNECTOR Carson Line Fiscal Year Comparisons



**RTC Transit Fixed Route Bus Ridership Report
University of Nevada, Reno Ed-Pass Program
FY 2025**

Category	Jul	Aug	Sep	Oct	Nov	Dec	Jan	Feb	Mar	Apr	May	Jun	FYTD
FY 2020	2,779	5,218	8,159	9,127	6,808	6,592	7,312	9,084	5,873	1,818	1,877	2,410	67,057
FY 2021	2,991	3,723	4,156	4,185	3,502	3,455	3,329	3,409	3,881	4,471	4,333	4,330	45,765
FY 2022	4,670	3,581	6,584	1,710	2,264	2,447	3,376	4,924	5,936	6,410	5,716	6,033	53,651
FY 2023	6,539	7,482	11,046	11,291	8,857	7,399	6,215	7,973	8,138	9,470	7,640	6,833	98,883
FY 2024	7,650	8,824	13,841	13,631	11,414	9,231	8,864	11,077	10,309	11,024	8,445	7,516	121,826
Percent Change	15%	50%	8.3%	16%	16%	14%	39%	30%	38%				
FY 2025	8,797	13,215	14,988	15,763	13,269	10,523	12,336	14,363	14,216				



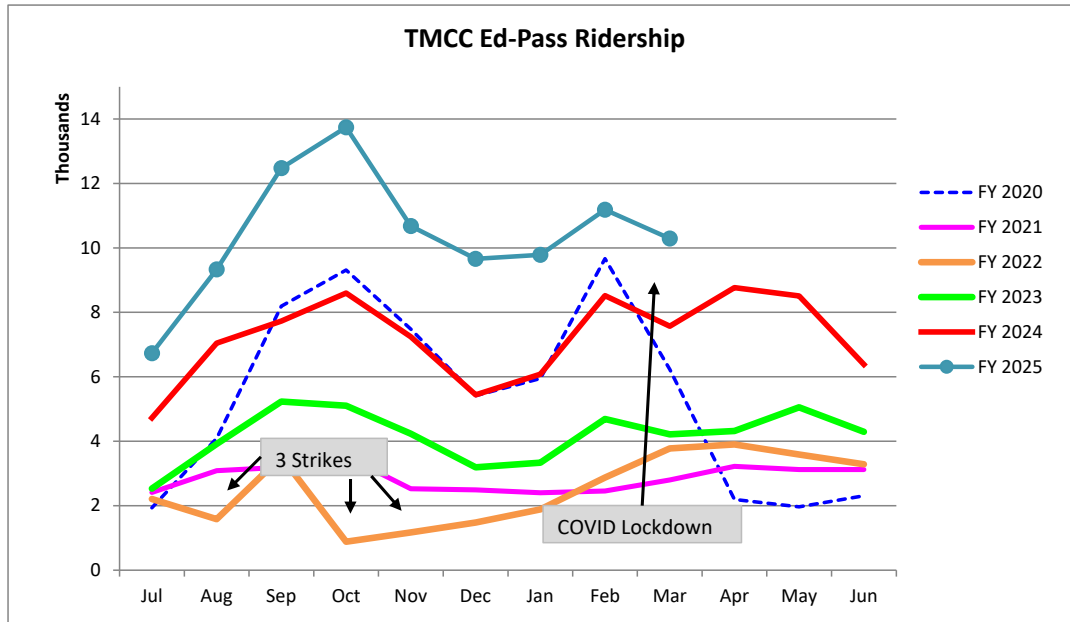
Fiscal Year	Rides
FY 2003	51,228
FY 2004	55,114
FY 2005	69,685
FY 2006	88,070
FY 2007	85,295
FY 2008	86,461
FY 2009	88,385
FY 2010	79,518
FY 2011	75,925
FY 2012	75,300
FY 2013	50,438
FY 2014	40,854
FY 2015	41,778
FY 2016	50,022
FY 2017	40,581
FY 2018	34,154
FY 2019	30,251

U-Pass:

FY 2020	67,057
FY 2021	45,765
FY 2022	53,651
FY 2023	98,883
FY 2024	121,826

**RTC Transit Fixed Route Bus Ridership Report
Truckee Meadows Community Ed-Pass Program
FY 2025**

Category	Jul	Aug	Sep	Oct	Nov	Dec	Jan	Feb	Mar	Apr	May	Jun	FYTD
FY 2020	1,933	4,086	8,193	9,311	7,479	5,413	5,945	9,668	6,227	2,193	1,968	2,310	64,726
FY 2021	2,414	3,090	3,194	3,535	2,527	2,493	2,402	2,459	2,800	3,225	3,126	3,124	34,389
FY 2022	2,208	1,584	3,516	883	1,170	1,480	1,886	2,875	3,773	3,899	3,585	3,287	30,146
FY 2023	2,533	3,913	5,233	5,103	4,231	3,195	3,335	4,690	4,213	4,314	5,051	4,292	50,103
FY 2024	4,725	7,045	7,727	8,596	7,244	5,440	6,081	8,520	7,569	8,768	8,510	6,384	86,609
Percent Change	43%	32%	61%	60%	47%	78%	61%	31%	36%				
FY 2025	6,734	9,334	12,476	13,741	10,681	9,659	9,785	11,186	10,294				



Fiscal Year	Rides
FY 2013	90,583
FY 2014	113,700
FY 2015	94,112
FY 2016	83,375
FY 2017	66,110
FY 2018	53,027
FY 2019	37,191

Ed-Pass:	
FY 2020	64,726
FY 2021	34,389
FY 2022	30,146
FY 2023	50,103
FY 2024	86,609