



RTC Transit Fixed Route Bus Operating Statistics

**RTC RIDE
RTC RAPID
RTC REGIONAL CONNECTOR**

June 2025



Table of Contents

RTC Transit Fixed Route Bus Highlights

System Reports..... Page 1

Economic Data Page 5

Route Comparison Data Page 7

On Time Performance Data Page 8

Monthly Operating Statistics..... Page 9

RTC RAPID Virginia Line & Route 1 Page 14

RTC RAPID Lincoln Line & Route 11 Page 16

RTC REGIONAL CONNECTOR/Carson Line Page 18

RTC TMCC and UNR Education Pass..... Page 20

RTC Transit Fixed Route Bus Highlights

June 2025

RTC Transit Fixed Route Bus

- For the month of June, there were 480,562 rides, **up 5.2%** compared with last year (page 1). The weighted average daily ridership was 16,330, **up 1.1%** compared with last year (page 3).
- For the most recent 12 months, there were 5.82 million rides, **up 9.6%** compared with the previous 12 months.
- In June, there were 21,452 service hours, **down 0.5%** compared with last year (page 9).
- Productivity was 22.4 rides per service hour, **up 5.7%** compared with last year (page 9).
- On-time performance for June is 91.06%, remaining above the 90% target.

External Impacts on Ridership

- The average temperature this month was 72.4°F, 3.4°F lower compared with last year.
- The Reno-Sparks area preliminary unemployment rate in May was 4.3%. Unemployment has been gradually trending upward since a low of 2.8% in March 2021.
- Nevada's preliminary unemployment rate for May was 5.4%. The national unemployment rate for May was 4.2%.

Route Ridership Comparison

- For June, Route 18 (serving Glendale) had the highest productivity with 28.4 rides per service hour (page 7).
- Route 1 (serving S Virginia St between downtown Reno and Meadowood Mall) came in second with 26.9.
- Route 5 (serving Sun Valley) had the third highest productivity in the system with 24.5 rides per service hour.
- Route 56 (serving South Meadows) ridership had the highest increase compared with last year by 18.5%.
- Route 54 (serving Sparks - Meadowood) ridership had the second highest increase compared with last year by 15.9%.
- Route 11 (serving Fourth - Prater) had the third highest increase in ridership at 15.4%.

RTC RAPID (Virginia & Lincoln Lines Combined)

- This month, there were 121,172 rides on RTC RAPID, up 6.6% compared with last year. By comparison, system ridership was up 5.2%. The productivity of RTC RAPID at 26.5 rides per service hour was up 6.4% compared with last year. By comparison, system productivity was 22.4 rides per service hour, up 5.7% compared with last year.
- There were 1.47 million rides over the most recent 12 months, up 3.0% compared with the previous 12 months.
- RAPID rides now make up 25.2% of system ridership.
- 45.3% of all system rides were taken on RAPID and Routes 1 and 11.

RTC RAPID Virginia Line

- This month, there were 85,110 rides on the Virginia Line, **up 11.5%** compared with last year. Productivity at 27.5 rides per service hour is **up 11.2%** compared with last year.
- Ridership for both the Virginia Line and Route 1 was 119,089 **up 6.8%** compared with last year (page 14). There were 1.42 million rides over the most recent 12 months, **up 1.9%** compared with the previous 12 months.

RTC RAPID Lincoln Line

- This month, there were 36,062 rides on the Lincoln Line **down 3.4%** compared with last year. Productivity at 24.5 rides per service hour is **down 3.4%** compared with last year.
- Ridership for both the Lincoln Line and Route 11 was 98,787, **up 7.7%** compared with last year (page 16). There were 1.20 million rides for the most recent 12 months, **up 17%** compared with the previous 12 months.

RTC REGIONAL CONNECTOR Carson Line

- There were 1,771 rides this month, **up 3.0%** compared with last June (page 18). At 6.6 rides per service hour, productivity is **up 3.4%** compared to last year. There were 20,560 rides for the most recent 12 months, **up 2.0 %** compared with the previous 12 months.

RTC TMCC and UNR Education Pass

- There were 9,170 UNR Ed-Pass rides, **up 22%** compared with last year (page 20).
- There were 7,777 TMCC Ed-Pass rides, **up 22%** compared with last year (page 21).

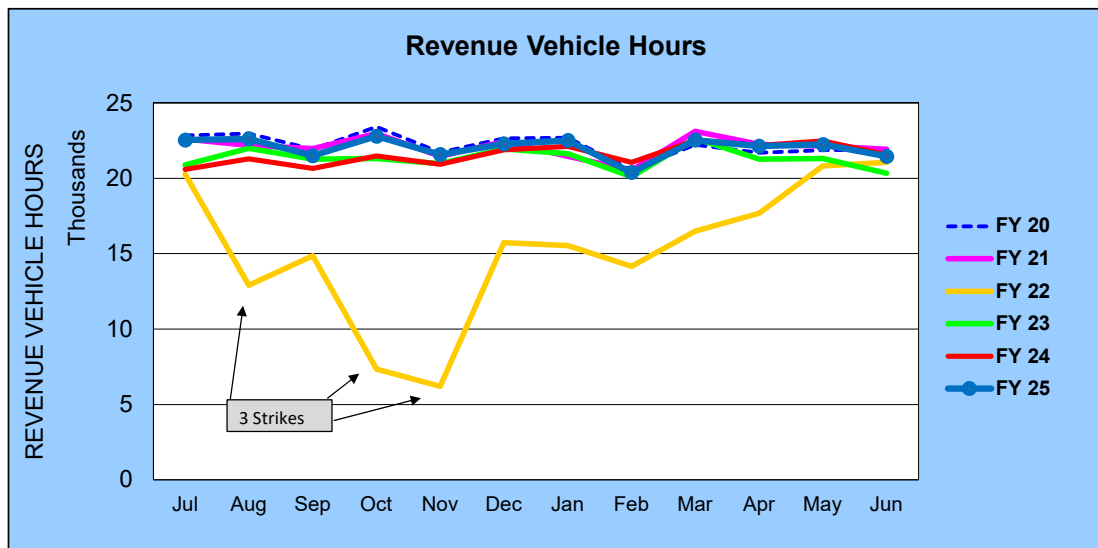
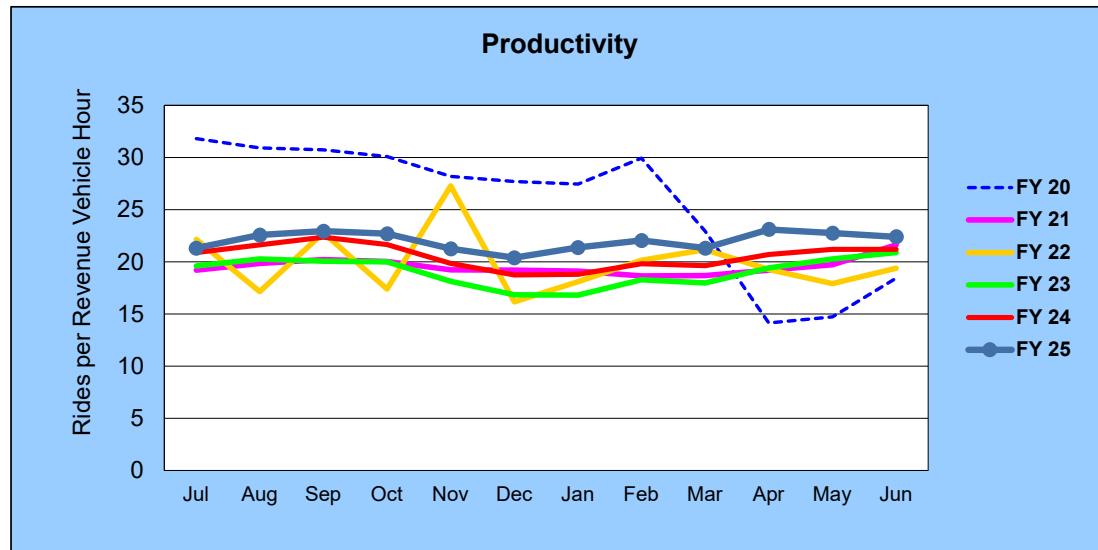
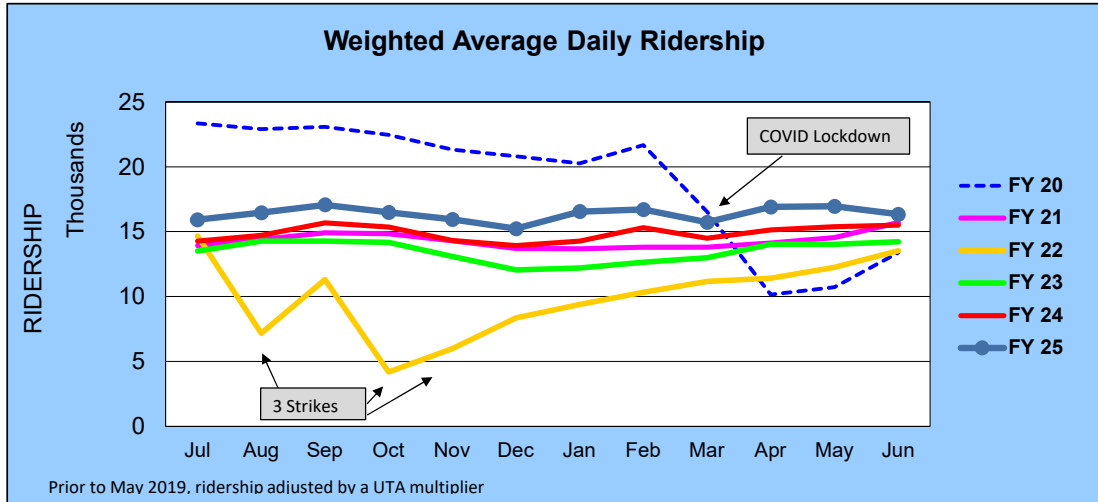
RTC Transit Operating Statistics

RTC Transit Fixed Route Bus						
Rolling 12-Month Ridership Comparison						
Most Recent 12 Months			Percent Change	Previous 12 Months		
Month	Year	Ridership		Month	Year	Ridership
Jul	2024	480,395	11.8%	Jul	2023	429,718
Aug		510,365	10.9%	Aug		460,384
Sep		493,117	6.8%	Sep		461,670
Oct		516,977	11.1%	Oct		465,243
Nov		458,480	10.3%	Nov		415,646
Dec		454,469	10.8%	Dec		410,240
Jan	2025	481,095	15.6%	Jan	2024	416,157
Feb		449,541	7.8%	Feb		417,018
Mar		479,876	8.5%	Mar		442,102
Apr		511,514	11.4%	Apr		459,351
May		505,690	6.1%	May		476,695
Jun		480,562	5.2%	Jun		456,808
TOTAL		5,822,081	9.6%	TOTAL		5,311,032

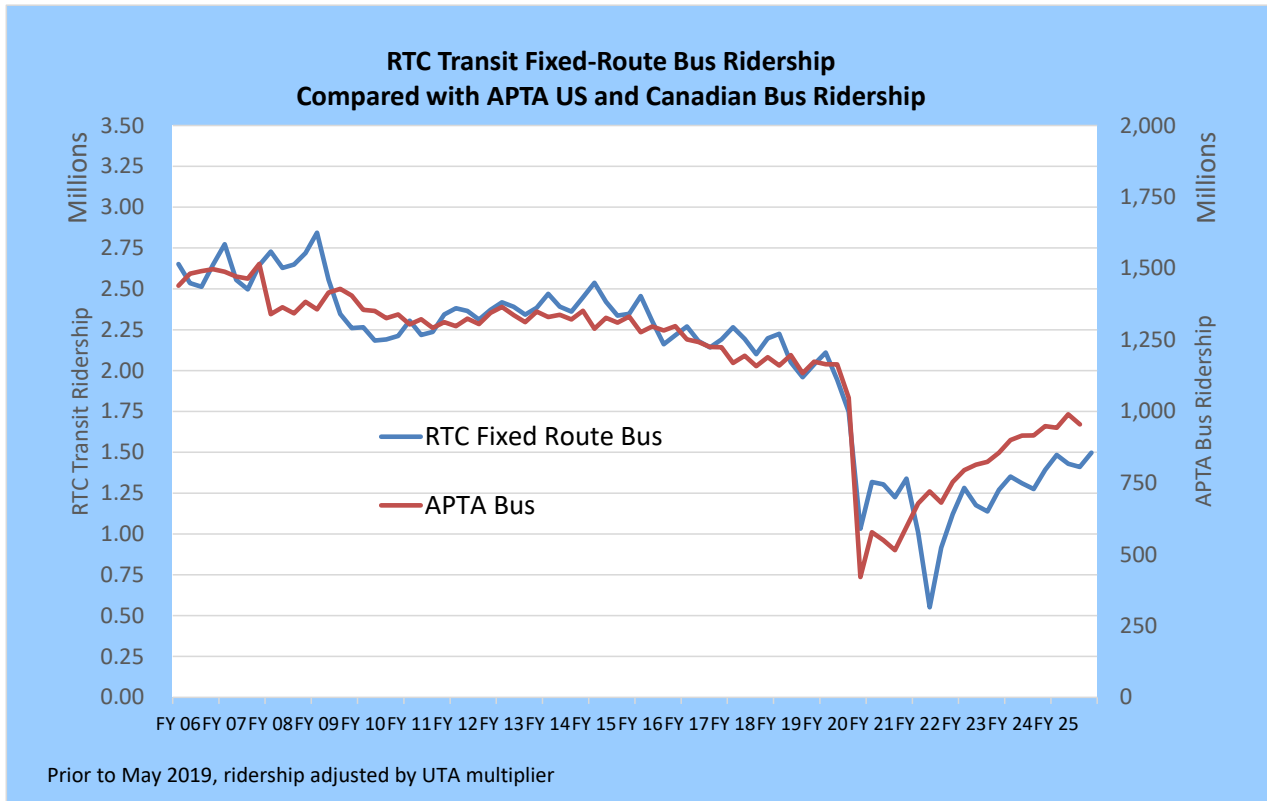
RTC Transit includes RTC RIDE, RTC RAPID, & RTC REGIONAL CONNECTOR

RTC Transit Fixed Route Bus

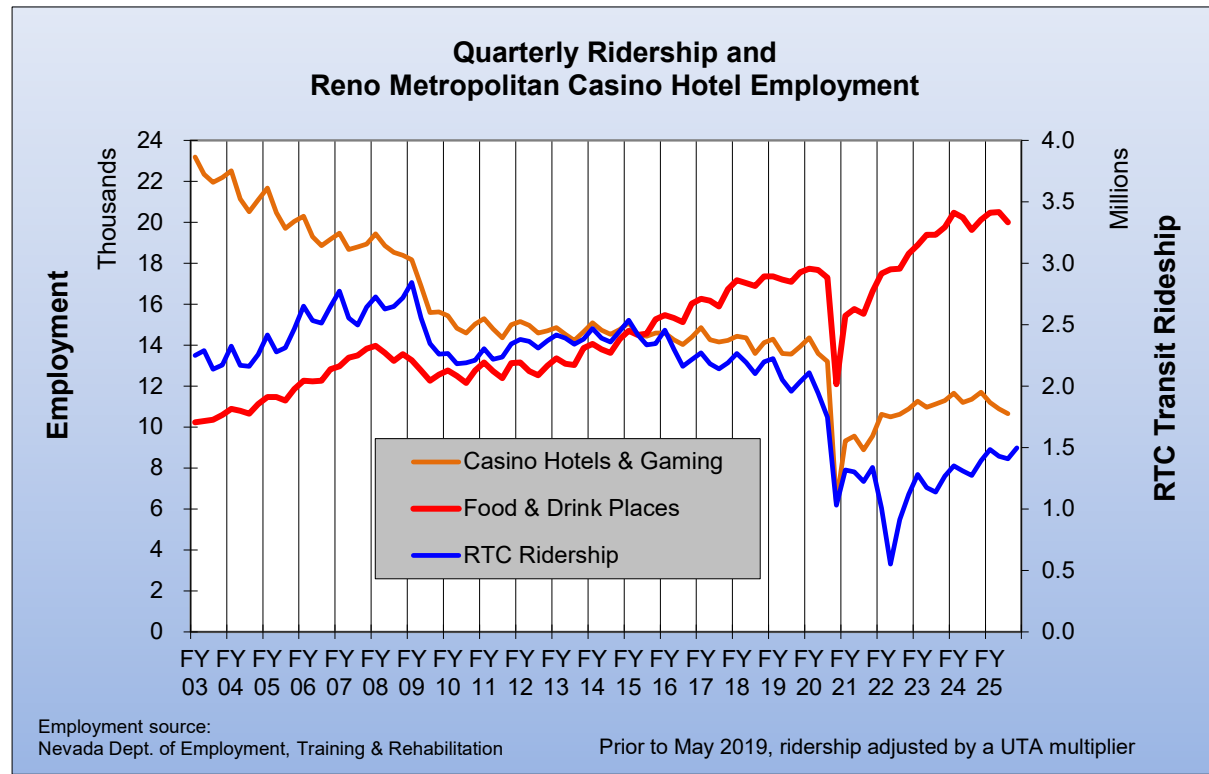
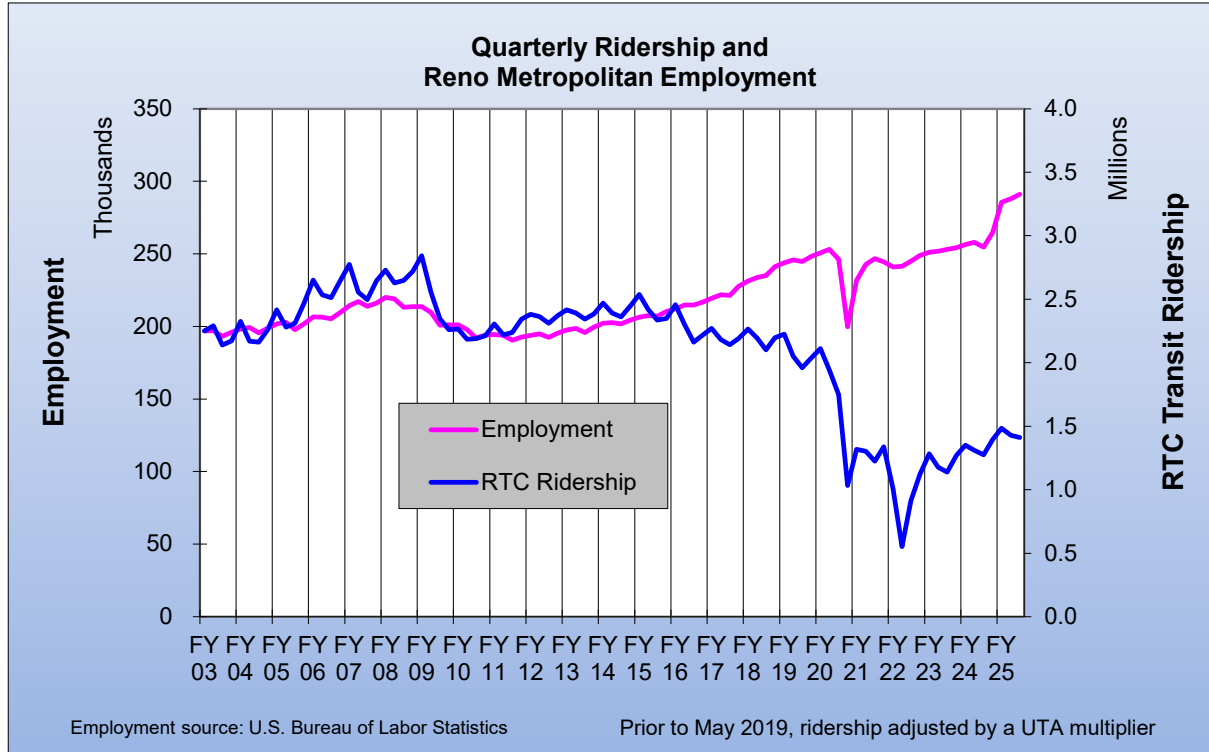
FISCAL YEAR COMPARISONS



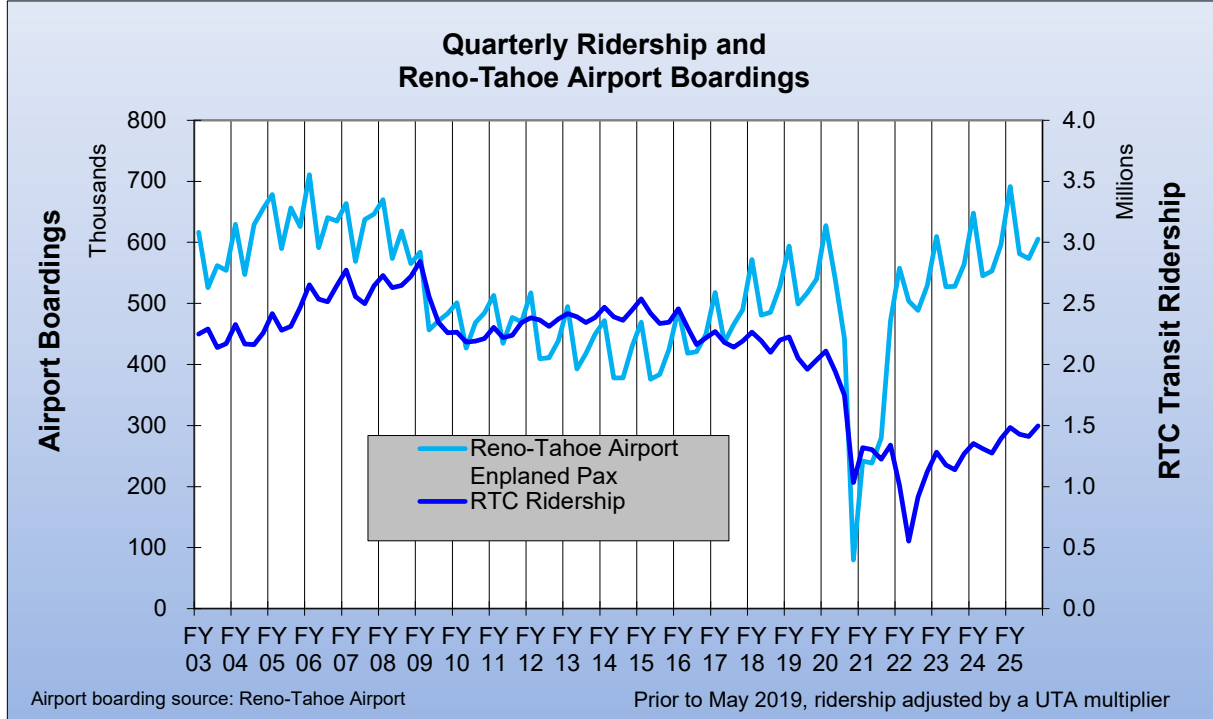
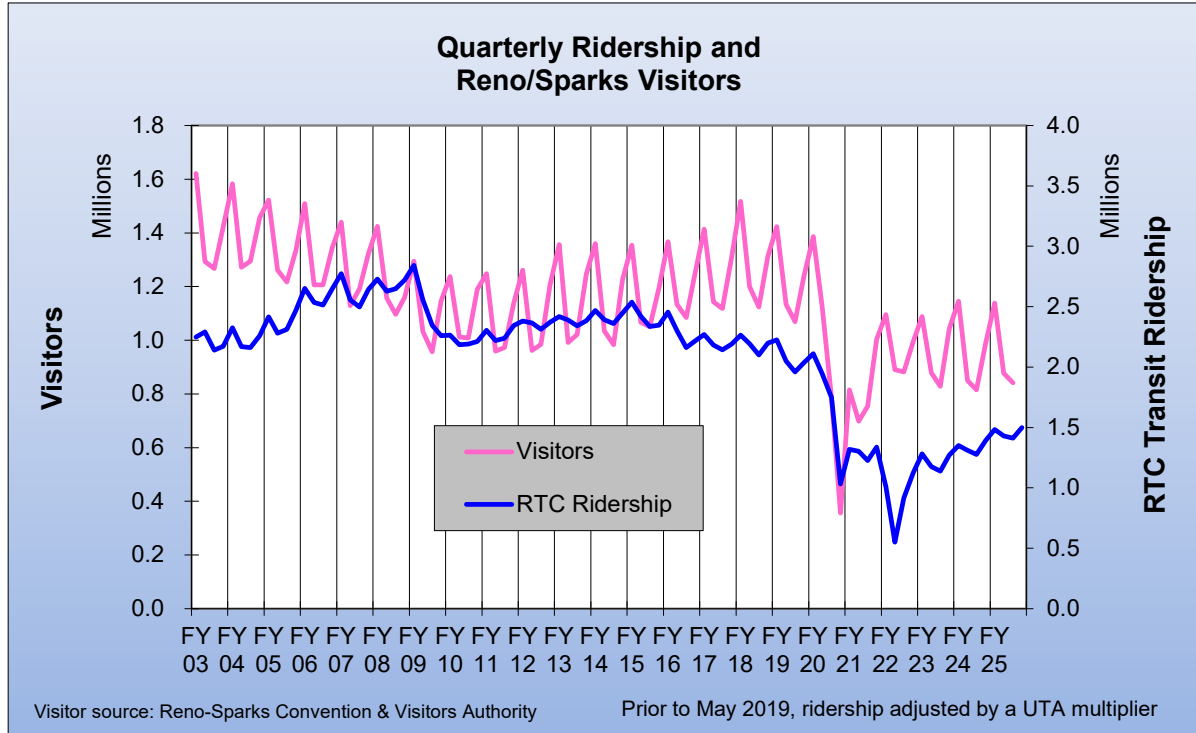
RTC Transit Fixed-Route Bus						
Weighted Average Daily Ridership Rolling 12-Month Ridership Comparison						
Most Recent 12 Months			Percent Change	Previous 12 Months		
Month	Year	Ridership		Month	Year	Ridership
Jul	2024	15,924	11.7%	Jul	2023	14,257
Aug		16,462	12.0%	Aug		14,698
Sep		17,068	8.9%	Sep		15,675
Oct		16,494	7.4%	Oct		15,353
Nov		15,951	11.4%	Nov		14,320
Dec		15,235	9.4%	Dec		13,931
Jan	2025	16,546	16.0%	Jan	2024	14,262
Feb		16,707	9.2%	Feb		15,294
Mar		15,711	8.4%	Mar		14,500
Apr		16,912	11.8%	Apr		15,129
May		16,957	10.3%	May		15,373
Jun		16,330	1.1%	Jun		16,157



RTC Transit Fixed-Route Bus



RTC Transit Fixed-Route Bus



RTC Route Comparison Report

Jun 2025

Route *	Product- ivity	Route	Svs Hours Change Fr. Last Year	Route	Ridership	Route	Ridership Change From Last Year
18	28.4	5	8.3%	RAP VL	85,110	56	18.5%
RAP VL	27.5	56	2.9%	11	62,725	54	15.9%
1	26.9	7	0.8%	RAP LL	36,062	11	15.4%
RAP LL	24.5	RAP VL	0.2%	2	34,209	RAP VL	11.5%
5	24.5	12	0.1%	1	33,979	21	10.8%
2	24.3	16	0.0%	5	30,507	2	8.9%
11	23.9	13	0.0%	7	30,105	18	7.3%
12	23.0	RAP LL	0.0%	12	28,966	5	5.9%
TOTAL	22.4	4	0.0%	18	20,975	16	5.8%
4	21.8	6	0.0%	9	17,509	TOTAL	5.2%
56	21.1	14	0.0%	21	15,637	14	4.7%
7	20.6	15	0.0%	56	15,361	9	4.1%
13	20.5	54	0.0%	13	13,839	12	3.6%
9	20.1	2	0.0%	15	13,685	RTC RC	3.0%
15	17.9	18	0.0%	4	11,330	7	-2.3%
21	17.7	21	-0.1%	14	9,730	1	-3.2%
54	16.4	9	-0.3%	6	7,067	RAP LL	-3.4%
6	13.8	1	-0.4%	54	6,423	13	-4.1%
14	12.4	RTC RC	-0.4%	16	5,572	6	-7.1%
16	11.4	TOTAL	-0.5%	RTC RC	1,771	15	-8.5%
RTC RC	6.6	11	-7.9%	TOTAL	480,562	4	-8.6%

* - RTC RC is RTC REGIONAL CONNECTOR.

RTC Transit Fixed Route Bus						
Monthly On Time Performance Comparison						
Most Recent 12 Months			Percent Change	Previous 12 Months		
Month	Year	OTP		Month	Year	OTP
Jul	2024	90.29%	3.4%	Jul	2023	87.28%
Aug		89.68%	3.3%	Aug		86.85%
Sep		90.11%	3.1%	Sep		87.44%
Oct		90.48%	1.0%	Oct		89.57%
Nov		91.38%	2.0%	Nov		89.62%
Dec		92.14%	2.3%	Dec		90.03%
Jan	2025	92.00%	3.1%	Jan	2024	89.26%
Feb		91.87%	1.8%	Feb		90.23%
Mar		93.02%	2.7%	Mar		90.61%
Apr		90.83%	0.1%	Apr		90.71%
May		91.23%	1.7%	May		89.72%
Jun		91.06%	0.8%	Jun		90.30%
Rolling 12-months			90.07%	Rolling 12-months		
			1.0%			

RTC TRANSIT OPERATING STATISTICS

Jun 2025

Route	Total Ridership	Previous Year	Change	Vehicle Revenue Hours	Previous Year	Change	Rides/ VRH	Previous Year	Change
RAPID VL	85,110	76,364	11.5%	3,095	3,088	0.2%	27.5	24.7	11.2%
RAPID LL	36,062	37,325	-3.4%	1,473	1,473	0.0%	24.5	25.3	-3.4%
1	33,979	35,115	-3.2%	1,262	1,267	-0.4%	26.9	27.7	-2.9%
2	34,209	31,420	8.9%	1,408	1,408	0.0%	24.3	22.3	8.9%
4	11,330	12,391	-8.6%	519	519	0.0%	21.8	23.9	-8.6%
5	30,507	28,809	5.9%	1,246	1,151	8.3%	24.5	25.0	-2.2%
6	7,067	7,611	-7.1%	512	512	0.0%	13.8	14.9	-7.1%
7	30,105	30,804	-2.3%	1,460	1,448	0.8%	20.6	21.3	-3.0%
9	17,509	16,814	4.1%	871	874	-0.3%	20.1	19.2	4.5%
11	62,725	54,374	15.4%	2,626	2,850	-7.9%	23.9	19.1	25.2%
12	28,966	27,948	3.6%	1,257	1,257	0.1%	23.0	22.2	3.6%
13	13,839	14,430	-4.1%	677	677	0.0%	20.5	21.3	-4.1%
14	9,730	9,292	4.7%	784	784	0.0%	12.4	11.8	4.7%
15	13,685	14,959	-8.5%	765	765	0.0%	17.9	19.6	-8.5%
16	5,572	5,268	5.8%	489	489	0.0%	11.4	10.8	5.8%
18	20,975	19,543	7.3%	740	740	0.0%	28.4	26.4	7.4%
21	15,637	14,117	10.8%	883	884	-0.1%	17.7	16.0	10.8%
54	6,423	5,544	15.9%	390	390	0.0%	16.4	14.2	15.9%
56	15,361	12,960	18.5%	727	707	2.9%	21.1	18.3	15.2%
RC Carson	1,771	1,720	3.0%	267	268	-0.4%	6.6	6.4	3.4%
Misc. Service									
Jun 2025	480,562	456,808	5.2%	21,452	21,551	-0.5%	22.4	21.2	5.7%
Jun '24	456,808			21,551			21.2		
Perc. Change	5.2%			-0.5%			5.7%		

RTC TRANSIT OPERATING STATISTICS

Jun 2025

Route	Vehicle Revenue Miles	Rides/ VRM	Est. Gross Operating Cost	Est. Cost Per Per VRH	Est. Cost Per VRM	Est. Cost Per Ride
RAPID VL	32,033	2.66	\$510,202	\$165	\$15.93	\$5.99
RAPID LL	14,217	2.54	\$242,755	\$165	\$17.07	\$6.73
1	12,516	2.71	\$208,060	\$165	\$16.62	\$6.12
2	14,766	2.32	\$232,065	\$165	\$15.72	\$6.78
4	6,726	1.68	\$85,557	\$165	\$12.72	\$7.55
5	15,443	1.98	\$205,485	\$165	\$13.31	\$6.74
6	4,744	1.49	\$84,403	\$165	\$17.79	\$11.94
7	25,702	1.17	\$240,648	\$165	\$9.36	\$7.99
9	9,868	1.77	\$143,626	\$165	\$14.55	\$8.20
11	30,145	2.08	\$432,836	\$165	\$14.36	\$6.90
12	12,696	2.28	\$207,299	\$165	\$16.33	\$7.16
13	6,255	2.21	\$111,521	\$165	\$17.83	\$8.06
14	7,555	1.29	\$129,283	\$165	\$17.11	\$13.29
15	7,880	1.74	\$126,124	\$165	\$16.01	\$9.22
16	3,380	1.65	\$80,640	\$165	\$23.86	\$14.47
18	8,052	2.61	\$121,948	\$165	\$15.15	\$5.81
21	9,659	1.62	\$145,606	\$165	\$15.07	\$9.31
54	6,269	1.02	\$64,374	\$165	\$10.27	\$10.02
56	10,705	1.43	\$119,874	\$165	\$11.20	\$7.80
RC Carson	8,022	0.22	\$44,003	\$165	\$5.49	\$24.85
Misc. Service						
Jun 2025	246,635	1.95	\$3,536,307	\$165	\$14.34	\$7.36
Jun '24	246,225	1.86	\$3,402,072	\$158	\$13.82	\$7.45
Perc. Change	0.2%	5.0%	3.9%	4.4%	3.8%	-1.2%

RTC Transit Operating Statistics

July 24 - June '25

Route	Total Ridership	Previous Year	Change	Vehicle Revenue Hours	Previous Year	Change	Rides/ VRH	Previous Year	Change
RAPID VL	1,004,770	972,742	3%	37,855	37,133	2%	26.5	26.2	1%
RAPID LL	460,670	450,448	2%	18,009	17,735	2%	25.6	25.4	1%
1	410,853	416,266	-1%	15,370	15,371	0%	26.7	27.1	-1%
2	417,044	373,161	12%	17,197	17,110	1%	24.3	21.8	11%
4	145,848	148,690	-2%	6,338	6,370	0%	23.0	23.3	-1%
5	375,539	336,788	12%	14,901	14,177	5%	25.2	23.8	6%
6	94,974	84,987	12%	6,251	6,250	0%	15.2	13.6	12%
7	371,780	337,486	10%	17,930	17,821	1%	20.7	18.9	9%
9	204,206	182,650	12%	10,745	10,674	1%	19.0	17.1	11%
11	736,256	570,461	29%	34,230	32,784	4%	21.5	17.4	24%
12	353,743	297,781	19%	15,447	14,489	7%	22.9	20.6	11%
13	176,378	158,456	11%	8,309	8,211	1%	21.2	19.3	10%
14	115,752	108,019	7%	9,642	9,601	0%	12.0	11.3	7%
15	178,458	170,919	4%	9,417	9,321	1%	19.0	18.3	3%
16	74,213	57,931	28%	5,989	5,968	0%	12.4	9.7	28%
18	249,415	244,151	2%	9,162	9,100	1%	27.2	26.8	1%
21	188,370	163,893	15%	10,768	10,160	6%	17.5	16.1	8%
54	73,311	68,107	8%	4,771	4,771	0%	15.4	14.3	8%
56	169,941	147,927	15%	8,764	8,344	5%	19.4	17.7	9%
RC Carson	20,560	20,169	2%	3,376	3,309	2%	6.1	6.1	0%
Misc. Service									
Current 12 Months	5,822,081	5,311,032	9.6%	264,472	258,698	2.2%	22.0	20.5	7.2%
Previous 12 Months	5,311,032			258,698			20.5		
Perc. Change	9.6%			2.2%			7.2%		

RTC Transit Operating Statistics

July 24 - June '25

Route	Vehicle Revenue Miles (thousand)	Rides/VRM	Est. Gross Operating Cost (thousand)	Est. Cost Per VRH	Est. Cost Per VRM	Est. Cost Per Ride
RAPID VL	392.2	2.56	\$6,240	\$165	\$15.91	\$6.21
RAPID LL	173.5	2.65	\$2,969	\$165	\$17.11	\$6.44
1	152.2	2.70	\$2,534	\$165	\$16.65	\$6.17
2	180.3	2.31	\$2,835	\$165	\$15.73	\$6.80
4	82.1	1.78	\$1,045	\$165	\$12.72	\$7.16
5	190.7	1.97	\$2,457	\$165	\$12.88	\$6.54
6	57.9	1.64	\$1,031	\$165	\$17.79	\$10.85
7	314.0	1.18	\$2,956	\$165	\$9.41	\$7.95
9	121.0	1.69	\$1,771	\$165	\$14.64	\$8.67
11	368.0	2.00	\$5,643	\$165	\$15.33	\$7.66
12	156.2	2.26	\$2,547	\$165	\$16.30	\$7.20
13	76.6	2.30	\$1,370	\$165	\$17.88	\$7.77
14	92.9	1.25	\$1,590	\$165	\$17.10	\$13.73
15	96.9	1.84	\$1,552	\$165	\$16.02	\$8.70
16	41.6	1.79	\$987	\$165	\$23.75	\$13.30
18	99.6	2.50	\$1,510	\$165	\$15.17	\$6.06
21	117.7	1.60	\$1,775	\$165	\$15.09	\$9.42
54	76.6	0.96	\$787	\$165	\$10.27	\$10.73
56	129.1	1.32	\$1,445	\$165	\$11.19	\$8.50
RC Carson	101.4	0.20	\$556	\$165	\$5.49	\$27.07
Misc. Service						
Current 12 Months	3,020.7	1.93	\$43,598	\$165	\$14.43	\$7.49
Previous 12 Months	2,939.4	1.81	\$40,839	\$158	\$13.89	\$7.69
Perc. Change	2.8%	6.7%	6.8%	4.4%	3.9%	-2.6%

June

Jul 2024 - June 2025

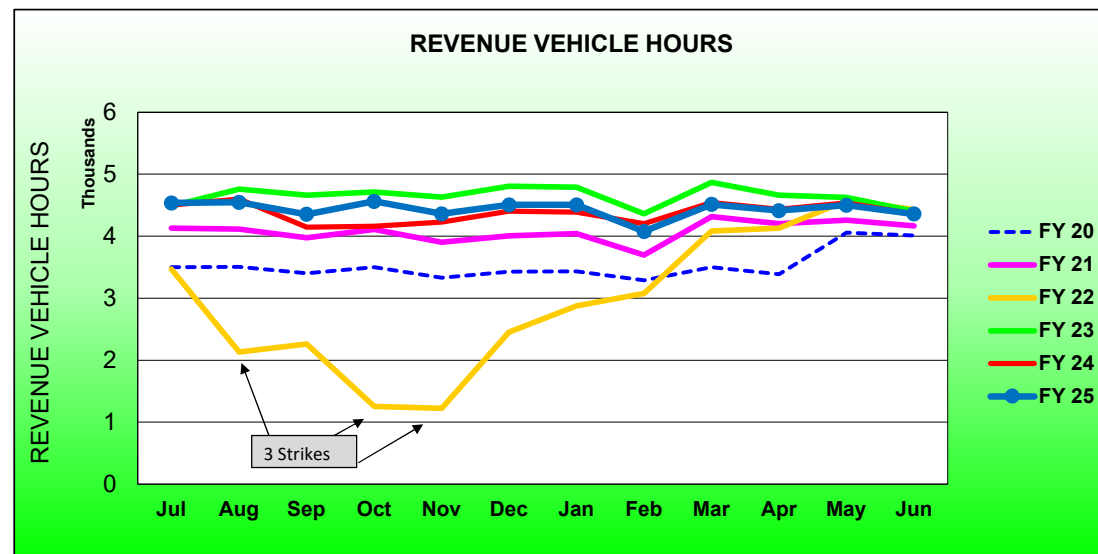
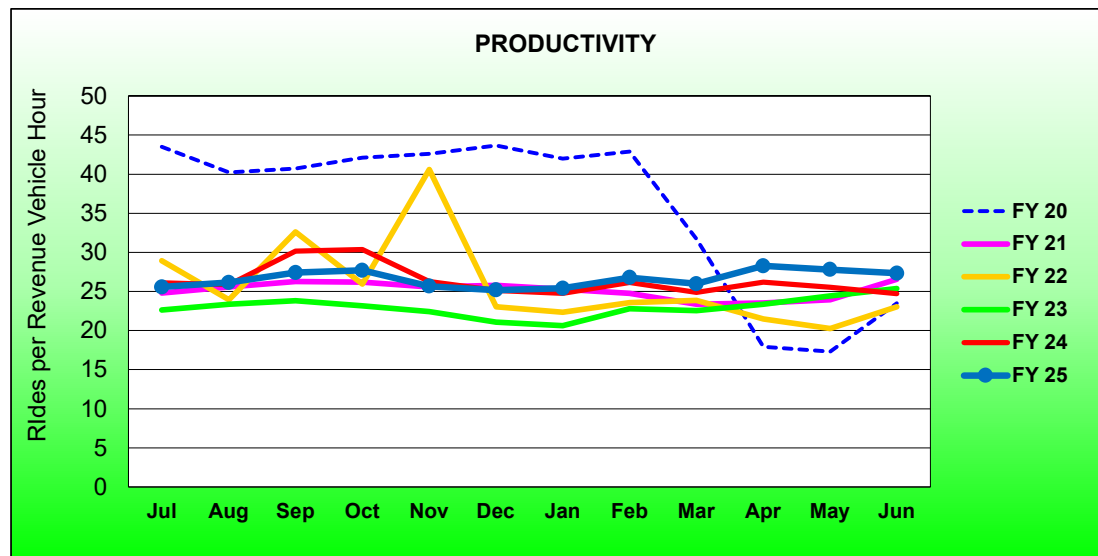
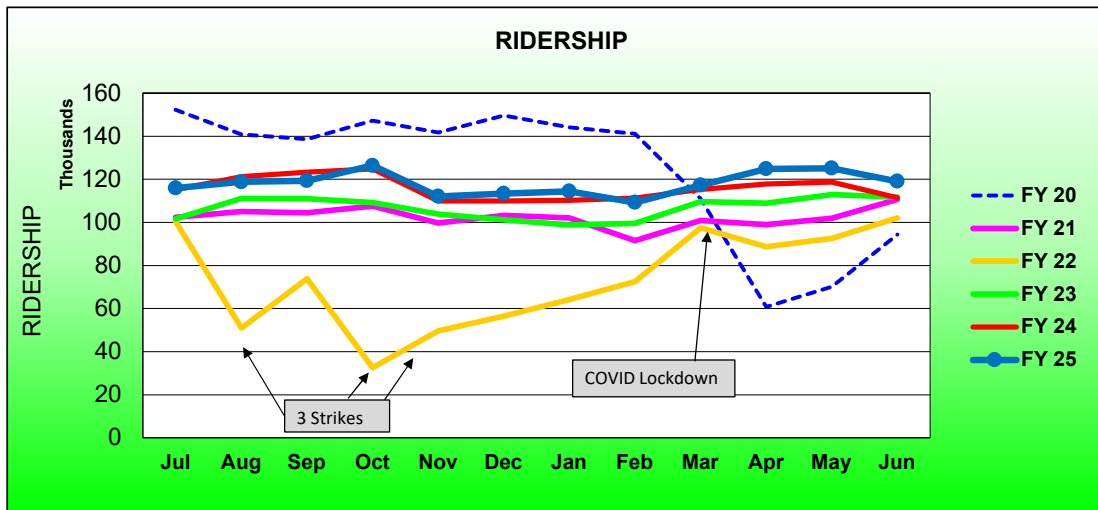
	2025	2024	Percent Change	Current 12 Months	Previous 12 Month	Percent Change
Single Ride Cash						
Full Fare	3,107	3,734	-17%	40,123	53,868	-26%
Reduced*	4,760	5,476	-13%	67,795	77,519	-13%
RTC ACCESS ID	100	360	-72%	2,119	4,219	-50%
Total	7,967	9,570	-17%	110,037	135,606	-19%
Day Pass Cash						
Full Fare	49,272	57,760	-15%	620,182	673,350	-8%
Reduced*	57,953	66,818	-13%	762,226	823,601	-7%
Total	107,225	124,578	-14%	1,382,408	1,496,951	-8%
Pre-Purchase Period Pass						
Full Fare	127,545	117,564	8%	1,474,668	1,352,705	9%
Reduced*	166,408	151,625	10%	2,008,192	1,699,230	18%
Total	293,953	269,189	9%	3,482,860	3,051,935	14%
Transfers	115	289	-60%	3,355	2,490	35%
Flow Through	13,199	4,135	219%	107,757	58,402	85%
Free Rides	38,819	25,270	54%	412,301	312,557	32%
U/Ed-Pass Free Rides	16,947	20,848	-19%	278,050	215,125	29%
Stored Ride Pass	2,338	2,930	-20%	34,767	37,797	-8%
Full Fare	203,756	193,368	5.4%	2,372,630	2,259,713	5.0%
Reduced*	276,764	263,294	5%	3,448,474	3,017,877	14%
Total Ridership	480,562	456,808	5.2%	5,822,081	5,311,032	9.6%
Previous 12 Months	456,808			5,311,032		
Change	5.2%			9.6%		
Vehicle Revenue Hours	21,452	21,551	-0.5%	264,472	258,698	2.2%
Previous 12 Months	21,551			258,698		
Change	-0.5%			2.2%		
Rides / VRH	22.4	21.2	5.7%	22.0	20.5	7.2%
Previous 12 Months	21.2			20.5		
Change	5.7%			7.2%		
Vehicle Revenue Miles	246,635	246,225	0.2%	3,020,714	2,939,440	2.8%
Rides / VRM	1.95	1.86	5.0%	1.93	1.81	6.7%
Est. Gross Operating Cost	\$3,536,307	\$3,402,072	3.9%	\$43,598,248	\$40,838,828	6.8%
Est. Cost Per VRH	\$165	\$158	4.4%	\$164.85	\$157.86	4.4%
Est. Cost Per VRM	\$14.34	\$13.82	3.8%	\$14.43	\$13.89	3.9%
Est. Cost Per Ride	\$7.36	\$7.45	-1.2%	\$7.49	\$7.69	-2.6%

* - Reduced fare includes Youth, Senior, Disabled, and US Veterans

RTC RAPID Virginia Line and Route 1						
ROLLING 12-MONTH COMPARISON						
Most Recent 12 Months			Percent Change	Previous 12 Months		
Month	Year	Ridership		Month	Year	Ridership
Jul	2024	115,958	0.7%	Jul	2023	115,149
Aug		118,809	-2.0%	Aug		121,197
Sep		119,329	-3.2%	Sep		123,298
Oct		126,372	1.3%	Oct		124,715
Nov		111,991	1.9%	Nov		109,893
Dec		113,334	3.1%	Dec		109,966
Jan	2025	114,436	3.8%	Jan	2024	110,229
Feb		109,175	-1.9%	Feb		111,239
Mar		117,198	1.6%	Mar		115,379
Apr		124,772	5.9%	Apr		117,811
May		125,160	5.5%	May		118,653
Jun		119,089	6.8%	Jun		111,479
TOTAL		1,415,623	1.9%	TOTAL		1,389,008

* - Strikes occurred Aug 3-13, Sep 27-Oct 20, Nov 9-Dec 3, 2021

RTC RAPID Virginia Line and Route 1 Fiscal Year Comparisons



RTC RAPID Lincoln Line and Route 11						
Rolling 12-Month Comparison						
Most Recent 12 Months			Percent Change	Previous 12 Months		
Month	Year	Ridership		Month	Year	Ridership
Jul	2024	97,939	21%	Jul	2023	81,268
Aug		105,967	24%	Aug		85,588
Sep		100,874	17%	Sep		86,016
Oct		104,465	21%	Oct		86,638
Nov		94,528	23%	Nov		76,791
Dec		94,246	21%	Dec		77,855
Jan	2025	100,102	22%	Jan	2024	82,348
Feb		92,939	15%	Feb		81,020
Mar		100,033	16%	Mar		86,512
Apr		104,152	15%	Apr		90,650
May		102,894	9%	May		94,524
Jun		98,787	7.7%	Jun		91,699
TOTAL		1,196,926	17%	TOTAL		1,020,909

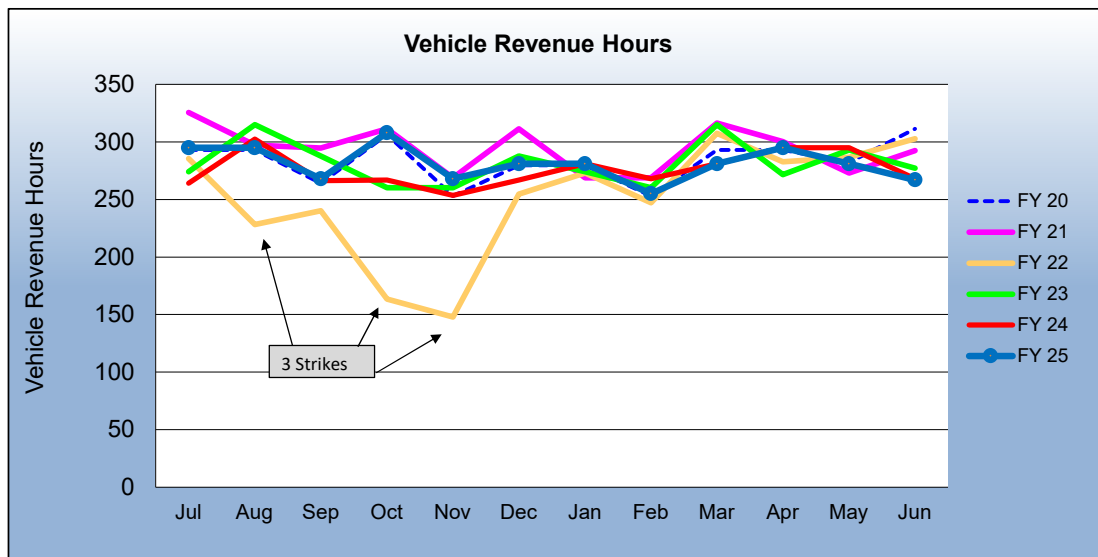
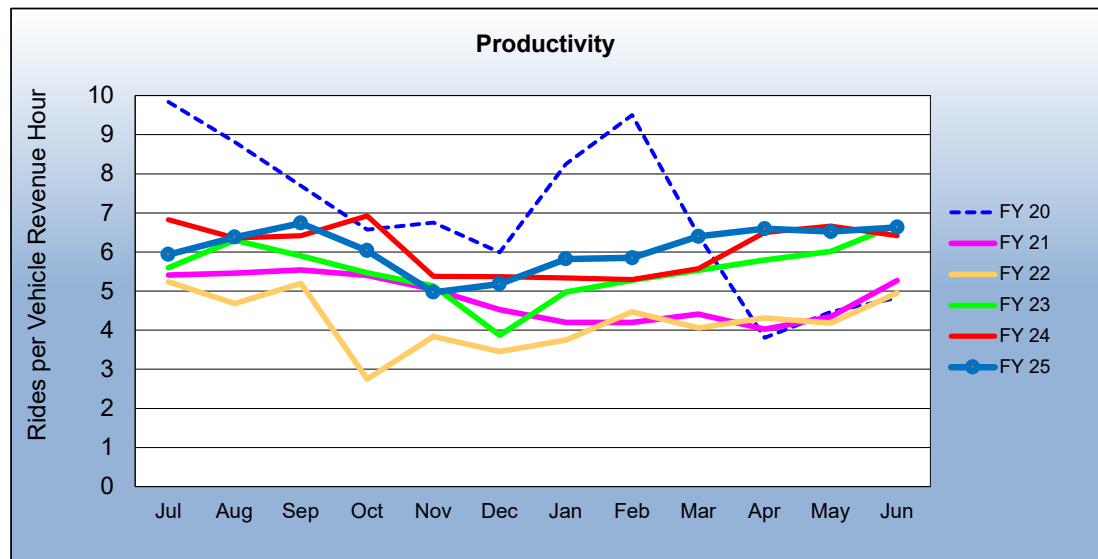
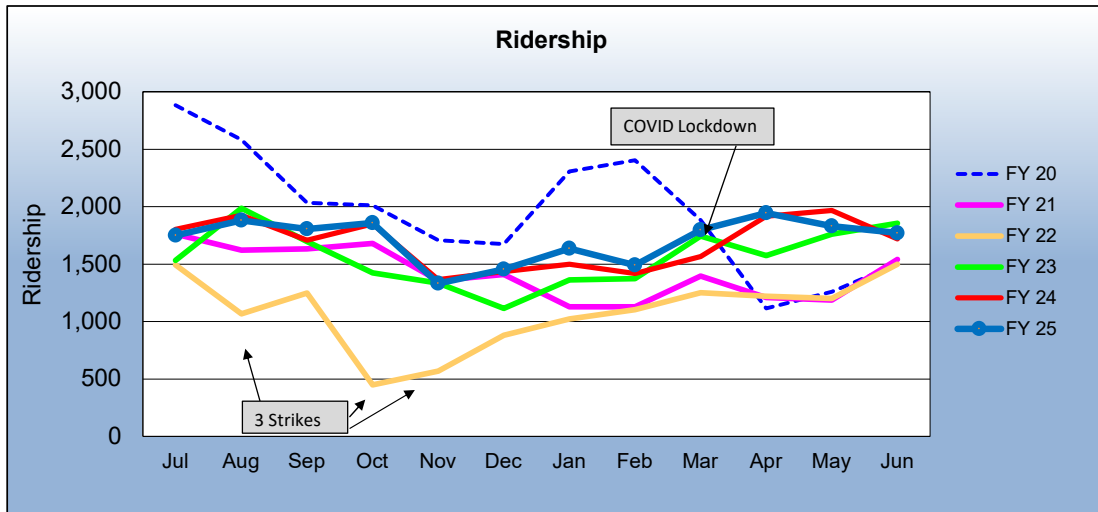
RTC RAPID Virginia & Lincoln Lines						
ROLLING 12-MONTH COMPARISON						
Most Recent 12 Months			Percent Change	Previous 12 Months		
Month	Year	Ridership		Month	Year	Ridership
Jul	2024	117,265	-2.7%	Jul	2023	120,564
Aug		121,538	-5.3%	Aug		128,312
Sep		122,911	-3.4%	Sep		127,255
Oct		129,927	2.0%	Oct		127,380
Nov		117,096	4.8%	Nov		111,741
Dec		118,408	5.6%	Dec		112,141
Jan	2025	120,884	8.5%	Jan	2024	111,384
Feb		115,147	2.9%	Feb		111,895
Mar		122,799	5.5%	Mar		116,399
Apr		129,444	7.6%	Apr		120,299
May		128,849	5.5%	May		122,131
Jun		121,172	6.6%	Jun		113,689
TOTAL		1,465,440	3.0%	TOTAL		1,423,190

* - Strikes occurred Aug 3-13, Sep 27-Oct 20, Nov 9-Dec 3, 2021

RTC REGIONAL CONNECTOR - Carson Line						
Rolling 12 Month Comparison						
Most Recent 12 Months			Percent Change	Previous 12 Months		
Month	Year	Ridership		Month	Year	Ridership
Jul	2024	1,751	-2.8%	Jul	2023	1,802
Aug		1,882	-2.2%	Aug		1,924
Sep		1,806	5.7%	Sep		1,708
Oct		1,859	0.5%	Oct		1,849
Nov		1,332	-2.4%	Nov		1,365
Dec		1,456	1.5%	Dec		1,434
Jan	2025	1,636	9.1%	Jan	2024	1,500
Feb		1,492	5.1%	Feb		1,419
Mar		1,798	14.7%	Mar		1,567
Apr		1,945	1.5%	Apr		1,916
May		1,832	-6.8%	May		1,965
Jun		1,771	3.0%	Jun		1,720
TOTAL		20,560	1.9%	TOTAL		20,169

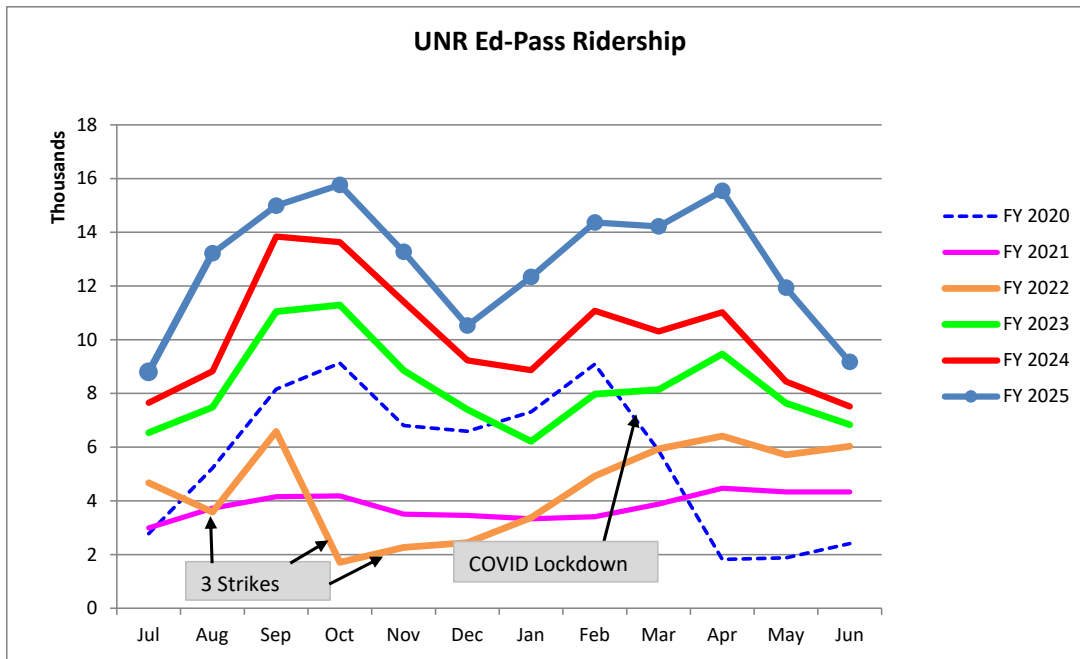
* - Strikes occurred Aug 3-13, Sep 27-Oct 20, Nov 9-Dec 3, 2021

RTC REGIONAL CONNECTOR Carson Line Fiscal Year Comparisons



**RTC Transit Fixed Route Bus Ridership Report
University of Nevada, Reno Ed-Pass Program
FY 2025**

Category	Jul	Aug	Sep	Oct	Nov	Dec	Jan	Feb	Mar	Apr	May	Jun	FYTD
FY 2020	2,779	5,218	8,159	9,127	6,808	6,592	7,312	9,084	5,873	1,818	1,877	2,410	67,057
FY 2021	2,991	3,723	4,156	4,185	3,502	3,455	3,329	3,409	3,881	4,471	4,333	4,330	45,765
FY 2022	4,670	3,581	6,584	1,710	2,264	2,447	3,376	4,924	5,936	6,410	5,716	6,033	53,651
FY 2023	6,539	7,482	11,046	11,291	8,857	7,399	6,215	7,973	8,138	9,470	7,640	6,833	98,883
FY 2024	7,650	8,824	13,841	13,631	11,414	9,231	8,864	11,077	10,309	11,024	8,445	7,516	121,826
Percent Change	15%	50%	8.3%	16%	16%	14%	39%	30%	38%	41%	41%	22%	
FY 2025	8,797	13,215	14,988	15,763	13,269	10,523	12,336	14,363	14,216	15,538	11,934	9,170	

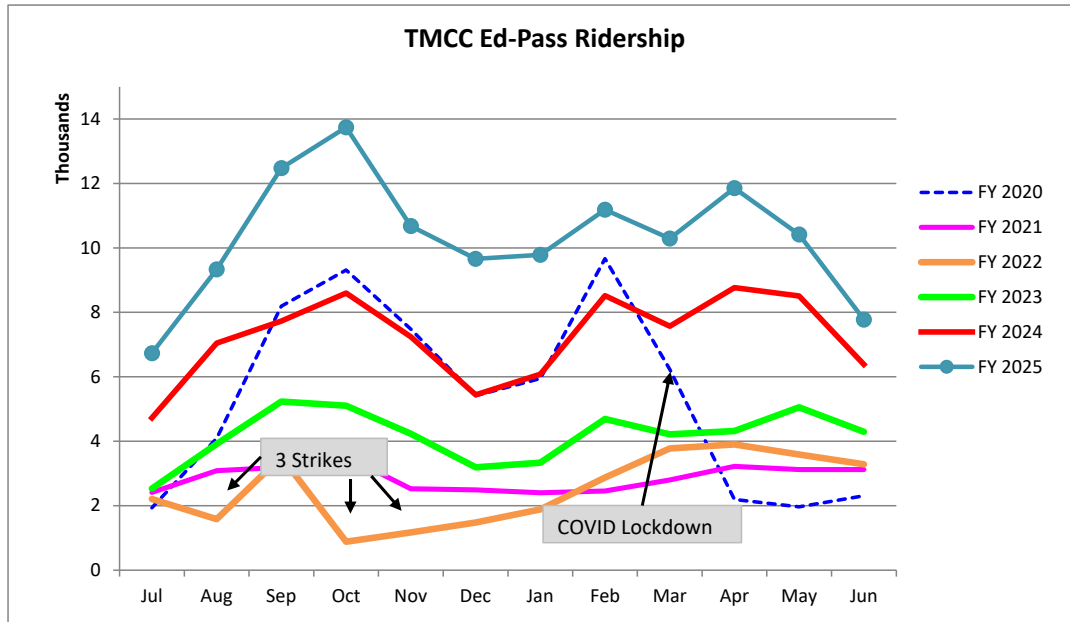


Fiscal Year	Rides
FY 2003	51,228
FY 2004	55,114
FY 2005	69,685
FY 2006	88,070
FY 2007	85,295
FY 2008	86,461
FY 2009	88,385
FY 2010	79,518
FY 2011	75,925
FY 2012	75,300
FY 2013	50,438
FY 2014	40,854
FY 2015	41,778
FY 2016	50,022
FY 2017	40,581
FY 2018	34,154
FY 2019	30,251

U-Pass:	
FY 2020	67,057
FY 2021	45,765
FY 2022	53,651
FY 2023	98,883
FY 2024	121,826

**RTC Transit Fixed Route Bus Ridership Report
Truckee Meadows Community Ed-Pass Program
FY 2025**

Category	Jul	Aug	Sep	Oct	Nov	Dec	Jan	Feb	Mar	Apr	May	Jun	FYTD
FY 2020	1,933	4,086	8,193	9,311	7,479	5,413	5,945	9,668	6,227	2,193	1,968	2,310	64,726
FY 2021	2,414	3,090	3,194	3,535	2,527	2,493	2,402	2,459	2,800	3,225	3,126	3,124	34,389
FY 2022	2,208	1,584	3,516	883	1,170	1,480	1,886	2,875	3,773	3,899	3,585	3,287	30,146
FY 2023	2,533	3,913	5,233	5,103	4,231	3,195	3,335	4,690	4,213	4,314	5,051	4,292	50,103
FY 2024	4,725	7,045	7,727	8,596	7,244	5,440	6,081	8,520	7,569	8,768	8,510	6,384	86,609
Percent Change	43%	32%	61%	60%	47%	78%	61%	31%	36%	35%	22%	22%	
FY 2025	6,734	9,334	12,476	13,741	10,681	9,659	9,785	11,186	10,294	11,855	10,416	7,777	



Fiscal Year	Rides
FY 2013	90,583
FY 2014	113,700
FY 2015	94,112
FY 2016	83,375
FY 2017	66,110
FY 2018	53,027
FY 2019	37,191

Ed-Pass:	
FY 2020	64,726
FY 2021	34,389
FY 2022	30,146
FY 2023	50,103
FY 2024	86,609