



# **RTC Transit Fixed Route Bus Operating Statistics**

**RTC RIDE  
RTC RAPID  
RTC REGIONAL CONNECTOR**

**July 2025**

# Table of Contents

RTC Transit Fixed Route Bus Highlights

System Reports..... Page 1

Economic Data ..... Page 5

Route Comparison Data ..... Page 7

On Time Performance Data ..... Page 8

Monthly Operating Statistics..... Page 9

RTC RAPID Virginia Line & Route 1 ..... Page 14

RTC RAPID Lincoln Line & Route 11 ..... Page 16

RTC REGIONAL CONNECTOR/Carson Line ..... Page 18

RTC TMCC and UNR Education Pass..... Page 20

# RTC Transit Fixed Route Bus Highlights

## July 2025

### RTC Transit Fixed Route Bus

- For the month of July, there were 495,828 rides, **up 3.2%** compared with last year (page 1). The weighted average daily ridership was 16,047, **up 0.8%** compared with last year (page 3).
- For the most recent 12 months, there were 5.84 million rides, **up 8.9%** compared with the previous 12 months.
- In July, there were 22,430 service hours, **down 0.4%** compared with last year (page 9).
- Productivity was 22.1 rides per service hour, **up 3.7%** compared with last year (page 9).
- On-time performance for July is 91.40%, remaining above the 90% target.

### External Impacts on Ridership

- The average temperature this month was 77.2°F, 3.9°F lower compared with last year.
- The Reno-Sparks area preliminary unemployment rate in June was 4.3%. Unemployment has been gradually trending upward since a low of 2.8% in March 2021.
- Nevada's preliminary unemployment rate for June was 5.4%. The national unemployment rate for June was 4.2%.

## Route Ridership Comparison

- For July, Route 18 (serving Glendale) had the highest productivity with 27.4 rides per service hour (page 7).
- Route 1 (serving S Virginia St between downtown Reno and Meadowood Mall) came in second with 27.3.
- Route 2 (serving Ninth – Centennial Plaza) had the third highest productivity in the system with 24.6 rides per service hour.
- Route 56 (serving South Meadows) ridership had the highest increase compared with last year by 14.9%.
- Route 14 (serving East Mill) ridership had the second highest increase compared with last year by 14.8%.
- Route 11 (serving Fourth - Prater) had the third highest increase in ridership at 13.9%.

## RTC RAPID (Virginia & Lincoln Lines Combined)

- This month, there were 124,845 rides on RTC RAPID, up 6.5% compared with last year. By comparison, system ridership was up 3.2%. The productivity of RTC RAPID at 26.2 rides per service hour was up 6.5% compared with last year. By comparison, system productivity was 22.1 rides per service hour, up 3.7% compared with last year.
- There were 1.47 million rides over the most recent 12 months, up 3.7% compared with the previous 12 months.
- RAPID rides now make up 25.2% of system ridership.
- 45.9% of all system rides were taken on RAPID and Routes 1 and 11.

## RTC RAPID Virginia Line

- This month, there were 86,089 rides on the Virginia Line, **up 10.0%** compared with last year. Productivity at 26.7 rides per service hour is **up 10.0%** compared with last year.
- Ridership for both the Virginia Line and Route 1 was 121,685, **up 4.9%** compared with last year (page 14). There were 1.42 million rides over the most recent 12 months, **up 2.3%** compared with the previous 12 months.

## RTC RAPID Lincoln Line

- This month, there were 38,756 rides on the Lincoln Line **down 0.6%** compared with last year. Productivity at 25.2 rides per service hour is **down 0.6%** compared with last year.
- Ridership for both the Lincoln Line and Route 11 was 105,911, **up 8.1%** compared with last year (page 16). There were 1.20 million rides for the most recent 12 months, **up 16%** compared with the previous 12 months.

## RTC REGIONAL CONNECTOR Carson Line

- There were 1,858 rides this month, **up 6.1%** compared with last July (page 18). At 6.3 rides per service hour, productivity is **up 6.1%** compared to last year. There were 20,667 rides for the most recent 12 months, **up 2.7 %** compared with the previous 12 months.

## RTC TMCC and UNR Education Pass

- There were 9,663 UNR Ed-Pass rides, **up 10%** compared with last year (page 20).
- There were 7,457 TMCC Ed-Pass rides, **up 11%** compared with last year (page 21).

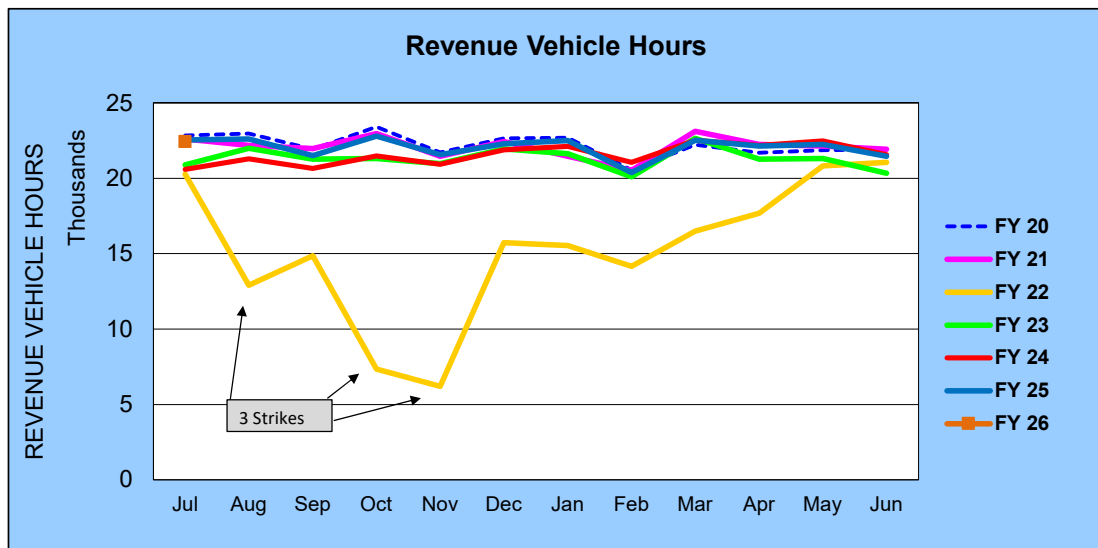
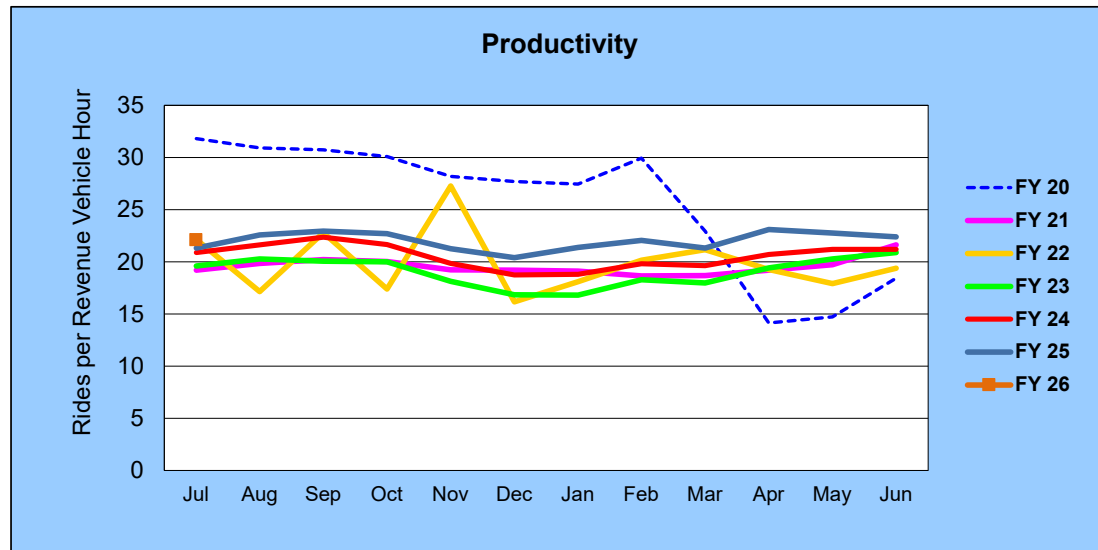
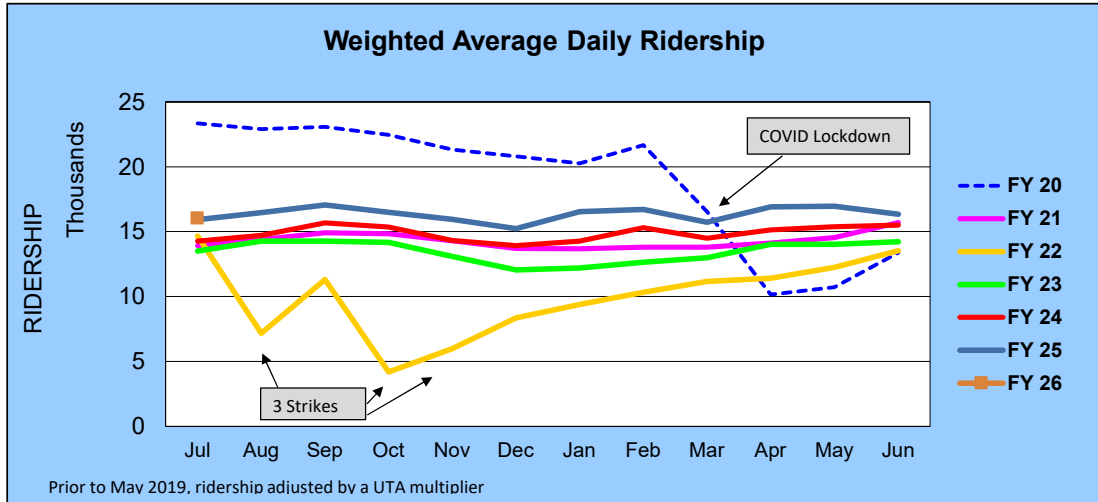
# RTC Transit Operating Statistics

RTC Transit Fixed Route Bus						
Rolling 12-Month Ridership Comparison						
Most Recent 12 Months			Percent Change	Previous 12 Months		
Month	Year	Ridership		Month	Year	Ridership
Aug	2024	510,365	10.9%	Aug	2023	460,384
Sep		493,117	6.8%	Sep		461,670
Oct		516,977	11.1%	Oct		465,243
Nov		458,480	10.3%	Nov		415,646
Dec		454,469	10.8%	Dec		410,240
Jan	2025	481,095	15.6%	Jan	2024	416,157
Feb		449,541	7.8%	Feb		417,018
Mar		479,876	8.5%	Mar		442,102
Apr		511,514	11.4%	Apr		459,351
May		505,690	6.1%	May		476,695
Jun		480,562	5.2%	Jun		456,808
Jul		495,828	3.2%	Jul		480,395
TOTAL		5,837,514	8.9%	TOTAL		5,361,709

RTC Transit includes RTC RIDE, RTC RAPID, & RTC REGIONAL CONNECTOR

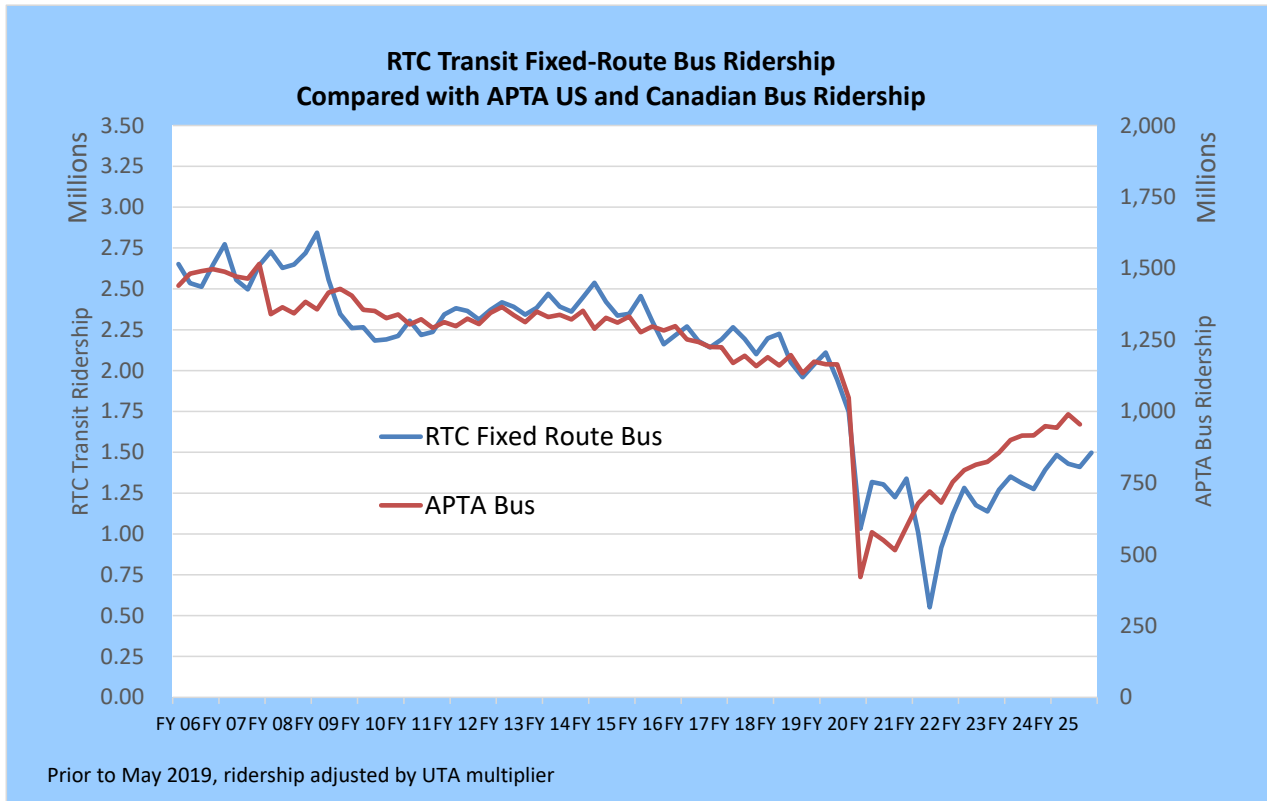
# RTC Transit Fixed Route Bus

## FISCAL YEAR COMPARISONS

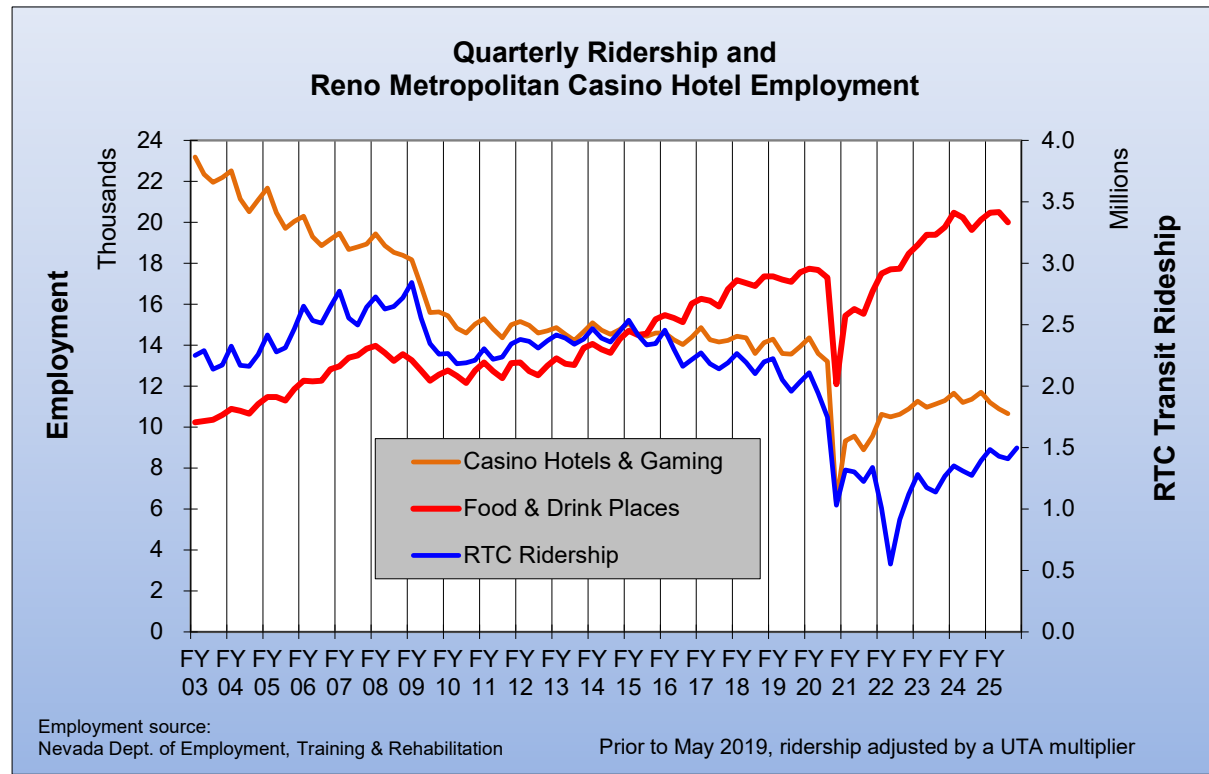
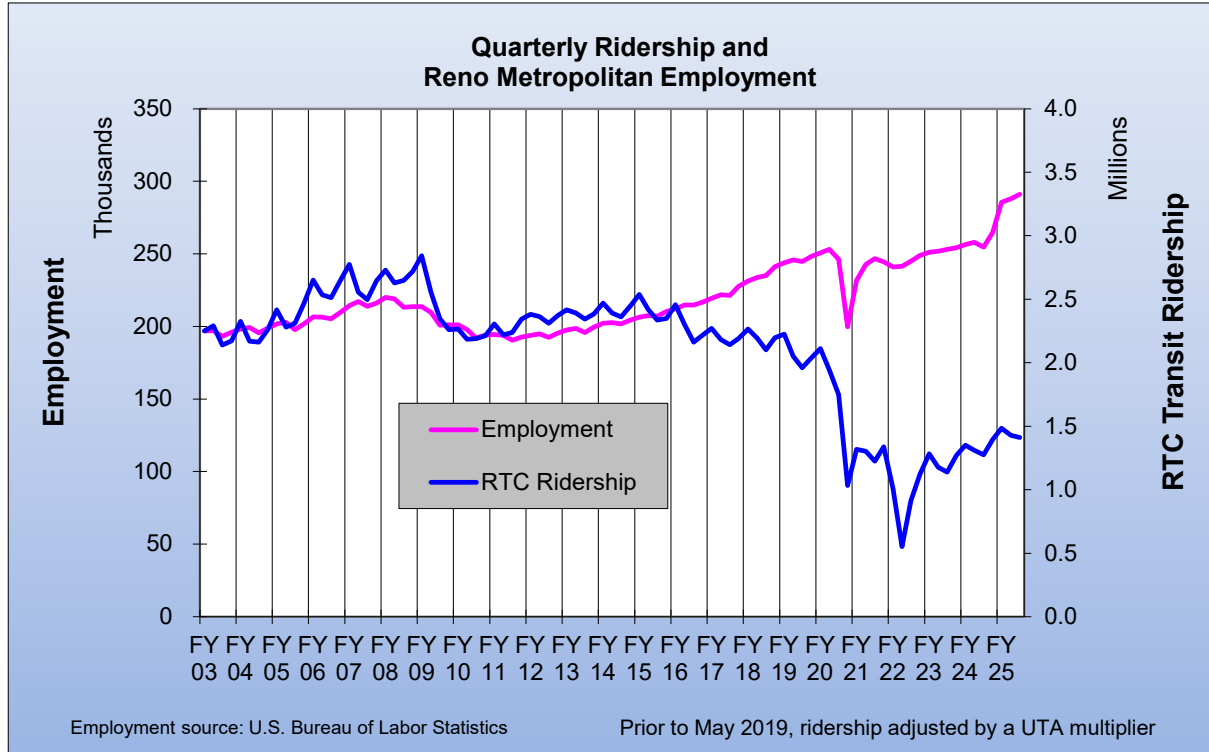


RTC Transit Fixed-Route Bus						
Weighted Average Daily Ridership Rolling 12-Month Ridership Comparison						
Most Recent 12 Months			Percent Change	Previous 12 Months		
Month	Year	Ridership		Month	Year	Ridership
Aug	2024	16,462	12.0%	Aug	2023	14,698
Sep		17,068	8.9%	Sep		15,675
Oct		16,494	7.4%	Oct		15,353
Nov		15,951	11.4%	Nov		14,320
Dec		15,235	9.4%	Dec		13,931
Jan	2025	16,546	16.0%	Jan	2024	14,262
Feb		16,707	9.2%	Feb		15,294
Mar		15,711	8.4%	Mar		14,500
Apr		16,912	11.8%	Apr		15,129
May		16,957	10.3%	May		15,373
Jun		16,330	1.1%	Jun		16,157
Jul		16,047	0.8%	Jul		15,924

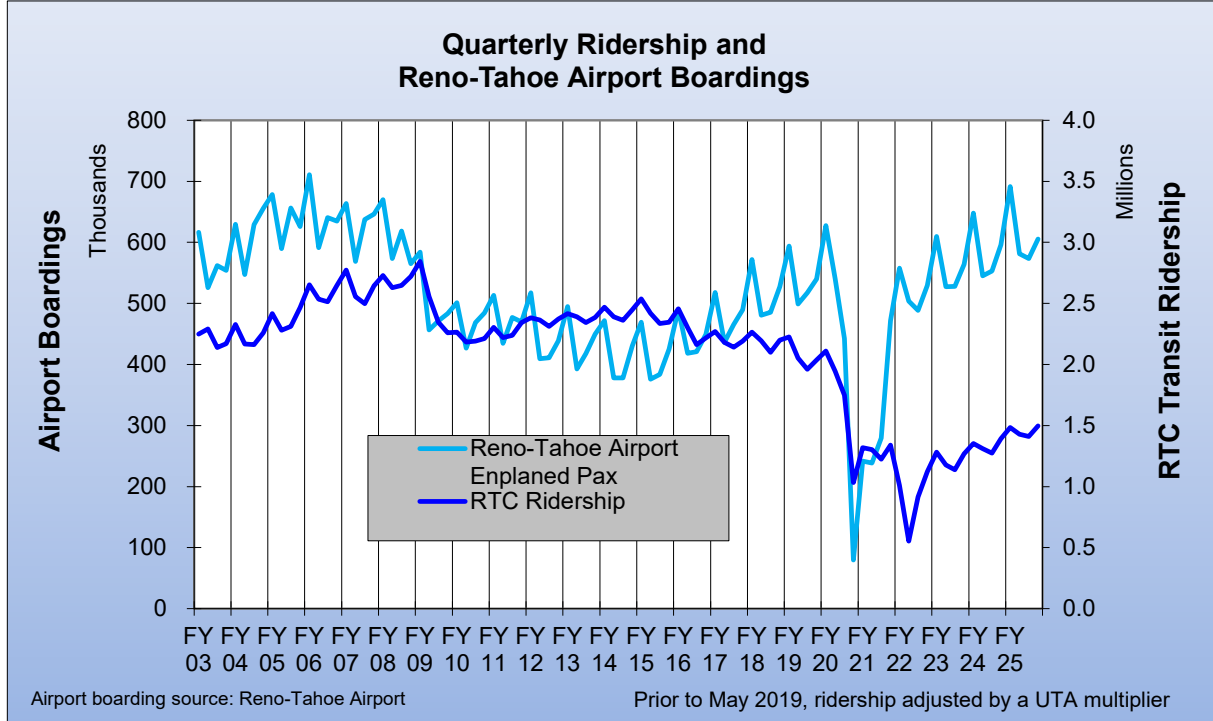
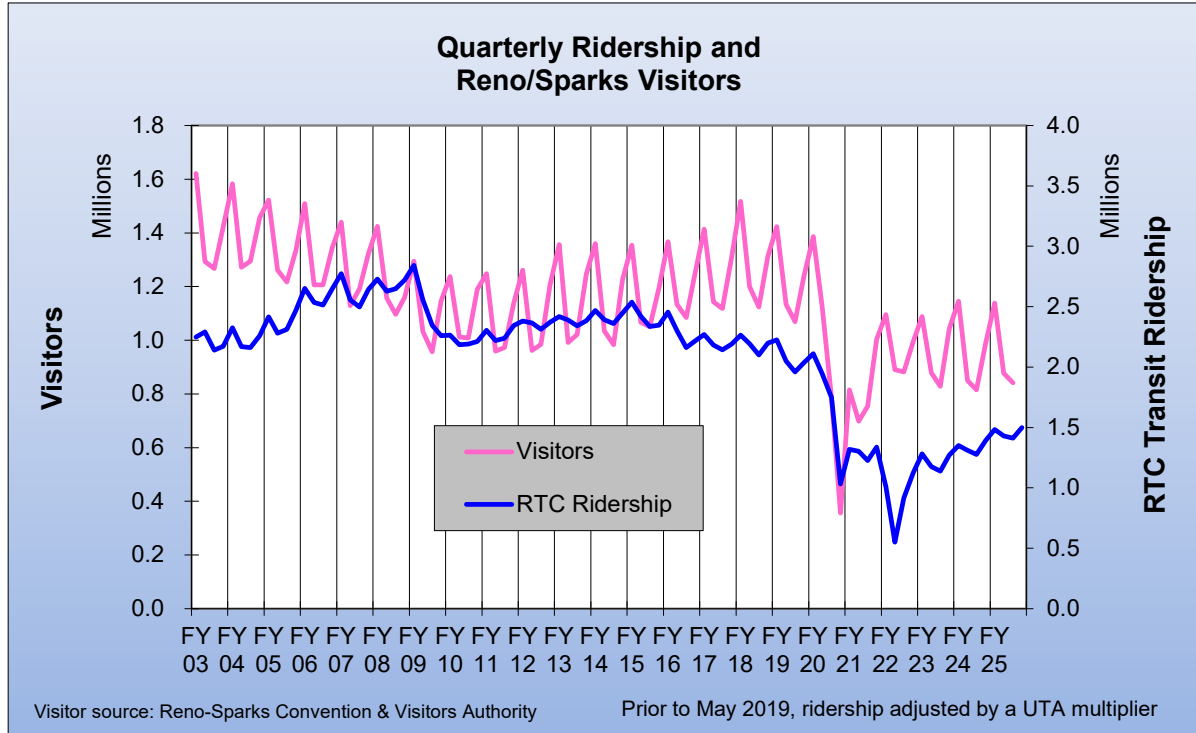




## RTC Transit Fixed-Route Bus



## RTC Transit Fixed-Route Bus



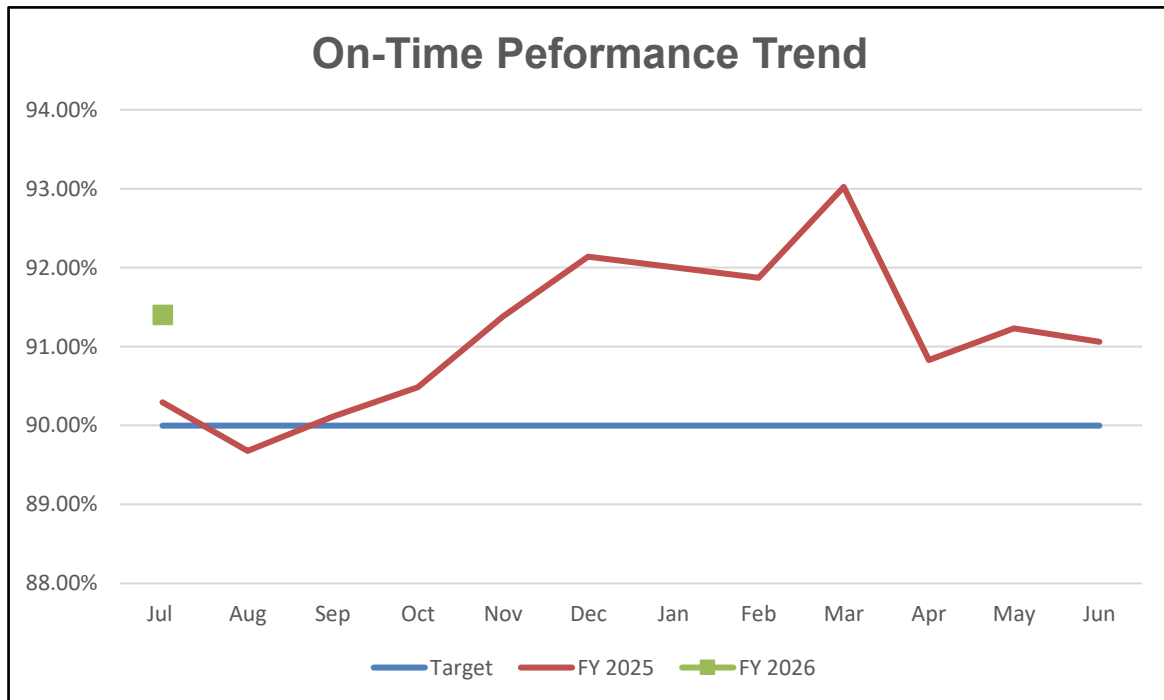
# RTC Route Comparison Report

## July 25

Route *	Product-ivity	Route	Svs Hours Change Fr. Last Year	Route	Ridership	Route	Ridership Change From Last Year
18	27.4	5	6.7%	RAP VL	86,089	56	14.9%
1	27.3	56	3.0%	11	67,155	14	14.8%
RAP VL	26.7	21	0.3%	RAP LL	38,756	11	13.9%
RAP LL	25.2	7	0.2%	2	35,833	RAP VL	10.0%
2	24.6	13	0.2%	1	35,596	54	7.4%
11	24.5	15	0.0%	7	31,128	RTC RC	6.1%
5	22.7	RAP VL	0.0%	5	29,729	2	4.9%
12	22.3	RAP LL	0.0%	12	29,472	18	4.8%
TOTAL	22.1	4	0.0%	18	21,597	TOTAL	3.2%
4	21.7	6	0.0%	9	17,313	5	2.9%
56	20.6	14	0.0%	56	15,932	12	1.3%
7	20.6	16	0.0%	21	15,268	RAP LL	-0.6%
13	19.9	54	0.0%	13	14,155	21	-0.8%
9	18.9	RTC RC	0.0%	15	14,097	16	-1.0%
15	17.5	2	0.0%	4	11,707	7	-3.5%
21	16.7	18	-0.1%	14	10,650	9	-4.2%
54	16.0	12	-0.2%	6	7,435	1	-5.6%
6	14.0	1	-0.2%	54	6,498	13	-6.3%
14	12.9	9	-0.4%	16	5,560	4	-7.4%
16	10.9	TOTAL	-0.4%	RTC RC	1,858	15	-7.6%
RTC RC	6.3	11	-6.8%	TOTAL	495,828	6	-12.3%

\* - RTC RC is RTC REGIONAL CONNECTOR.

RTC Transit Fixed Route Bus						
Monthly On-Time Performance Comparison						
Most Recent 12 Months			Percent Change	Previous 12 Months		
Month	Year	OTP		Month	Year	OTP
Aug	2024	89.68%	3.3%	Aug	2023	86.85%
Sep		90.11%	3.1%	Sep		87.44%
Oct		90.48%	1.0%	Oct		89.57%
Nov		91.38%	2.0%	Nov		89.62%
Dec		92.14%	2.3%	Dec		90.03%
Jan	2025	92.00%	3.1%	Jan	2024	89.26%
Feb		91.87%	1.8%	Feb		90.23%
Mar		93.02%	2.7%	Mar		90.61%
Apr		90.83%	0.1%	Apr		90.71%
May		91.23%	1.7%	May		89.72%
Jun		91.06%	0.8%	Jun		90.30%
Jul		91.40%	1.2%	Jul		90.29%
Rolling 12-months		90.23%	1.0%	Rolling 12-months		89.32%



# RTC Transit Operating Statistics

**July 25**

Route	Total Ridership	Previous Year	Change	Vehicle Revenue Hours	Previous Year	Change	Rides/ VRH	Previous Year	Change
RAPID VL	86,089	78,262	10.0%	3,230	3,230	0.0%	26.7	24.2	10.0%
RAPID LL	38,756	39,003	-0.6%	1,539	1,539	0.0%	25.2	25.3	-0.6%
1	35,596	37,696	-5.6%	1,303	1,306	-0.2%	27.3	28.9	-5.4%
2	35,833	34,147	4.9%	1,459	1,459	0.0%	24.6	23.4	4.9%
4	11,707	12,641	-7.4%	540	540	0.0%	21.7	23.4	-7.4%
5	29,729	28,895	2.9%	1,311	1,229	6.7%	22.7	23.5	-3.6%
6	7,435	8,475	-12.3%	532	532	0.0%	14.0	15.9	-12.3%
7	31,128	32,249	-3.5%	1,511	1,508	0.2%	20.6	21.4	-3.6%
9	17,313	18,068	-4.2%	917	921	-0.4%	18.9	19.6	-3.8%
11	67,155	58,936	13.9%	2,736	2,935	-6.8%	24.5	20.1	22.2%
12	29,472	29,083	1.3%	1,323	1,325	-0.2%	22.3	21.9	1.5%
13	14,155	15,109	-6.3%	710	709	0.2%	19.9	21.3	-6.5%
14	10,650	9,280	14.8%	825	825	0.0%	12.9	11.2	14.8%
15	14,097	15,264	-7.6%	807	807	0.0%	17.5	18.9	-7.6%
16	5,560	5,618	-1.0%	511	511	0.0%	10.9	11.0	-1.0%
18	21,597	20,605	4.8%	787	789	-0.1%	27.4	26.1	5.0%
21	15,268	15,397	-0.8%	915	912	0.3%	16.7	16.9	-1.1%
54	6,498	6,050	7.4%	406	406	0.0%	16.0	14.9	7.4%
56	15,932	13,866	14.9%	772	749	3.0%	20.6	18.5	11.5%
RC Carson	1,858	1,751	6.1%	295	295	0.0%	6.3	5.9	6.1%
Misc. Service		0			0				
<b>July 25</b>	<b>495,828</b>	<b>480,395</b>	<b>3.2%</b>	<b>22,430</b>	<b>22,527</b>	<b>-0.4%</b>	<b>22.1</b>	<b>21.3</b>	<b>3.7%</b>
Jul 24	480,395			22,527			21.3		
Perc. Change	3.2%			-0.4%			3.7%		

# RTC Transit Operating Statistics

**July 25**

Route	Vehicle Revenue Miles	Rides/ VRM	Est. Gross Operating Cost	Est. Cost Per Per VRH	Est. Cost Per VRM	Est. Cost Per Ride
RAPID VL	33,488	2.57	\$532,410	\$165	\$15.90	\$6.18
RAPID LL	14,803	2.62	\$253,637	\$165	\$17.13	\$6.54
1	12,933	2.75	\$214,865	\$165	\$16.61	\$6.04
2	15,298	2.34	\$240,563	\$165	\$15.72	\$6.71
4	7,000	1.67	\$89,027	\$165	\$12.72	\$7.60
5	16,396	1.81	\$216,170	\$165	\$13.18	\$7.27
6	4,929	1.51	\$87,697	\$165	\$17.79	\$11.80
7	26,665	1.17	\$249,034	\$165	\$9.34	\$8.00
9	10,332	1.68	\$151,192	\$165	\$14.63	\$8.73
11	31,291	2.15	\$451,065	\$165	\$14.42	\$6.72
12	13,387	2.20	\$218,116	\$165	\$16.29	\$7.40
13	6,568	2.16	\$117,055	\$165	\$17.82	\$8.27
14	7,958	1.34	\$136,055	\$165	\$17.10	\$12.78
15	8,302	1.70	\$133,034	\$165	\$16.02	\$9.44
16	3,561	1.56	\$84,280	\$165	\$23.67	\$15.16
18	8,567	2.52	\$129,808	\$165	\$15.15	\$6.01
21	9,994	1.53	\$150,788	\$165	\$15.09	\$9.88
54	6,523	1.00	\$66,987	\$165	\$10.27	\$10.31
56	11,361	1.40	\$127,231	\$165	\$11.20	\$7.99
RC Carson	8,859	0.21	\$48,598	\$165	\$5.49	\$26.16
Misc. Service						
<b>July 25</b>	<b>258,215</b>	<b>1.92</b>	<b>\$3,697,613</b>	<b>\$165</b>	<b>\$14.32</b>	<b>\$7.46</b>
Jul 24	257,767	1.86	\$3,713,597	\$165	\$14.41	\$7.73
Perc. Change	0.2%	3.0%	-0.4%	0.0%	-0.6%	-3.5%

# RTC Transit Operating Statistics

Aug 24 - Jul '25

Route	Total Ridership	Previous Year	Change	Vehicle Revenue Hours	Previous Year	Change	Rides/ VRH	Previous Year	Change
RAPID VL	1,012,597	971,267	4%	37,855	37,167	2%	26.7	26.1	2%
RAPID LL	460,423	448,624	3%	18,009	17,760	1%	25.6	25.3	1%
1	408,753	418,550	-2%	15,368	15,364	0%	26.6	27.2	-2%
2	418,730	375,784	11%	17,197	17,138	0%	24.3	21.9	11%
4	144,914	149,202	-3%	6,338	6,363	0%	22.9	23.4	-2%
5	376,373	340,939	10%	14,984	14,246	5%	25.1	23.9	5%
6	93,934	86,634	8%	6,251	6,256	0%	15.0	13.8	9%
7	370,659	343,192	8%	17,932	17,715	1%	20.7	19.4	7%
9	203,451	186,241	9%	10,741	10,702	0%	18.9	17.4	9%
11	744,475	588,956	26%	34,031	33,817	1%	21.9	17.4	26%
12	354,132	303,436	17%	15,445	14,882	4%	22.9	20.4	12%
13	175,424	161,654	9%	8,310	8,257	1%	21.1	19.6	8%
14	117,122	109,078	7%	9,642	9,625	0%	12.1	11.3	7%
15	177,291	172,774	3%	9,417	9,369	1%	18.8	18.4	2%
16	74,155	59,536	25%	5,989	5,984	0%	12.4	9.9	24%
18	250,407	242,166	3%	9,161	9,137	0%	27.3	26.5	3%
21	188,241	164,155	15%	10,771	10,233	5%	17.5	16.0	9%
54	73,759	68,612	8%	4,771	4,776	0%	15.5	14.4	8%
56	172,007	150,791	14%	8,786	8,511	3%	19.6	17.7	10%
RC Carson	20,667	20,118	3%	3,376	3,340	1%	6.1	6.0	2%
Misc. Service									
<b>Current 12 Months</b>	<b>5,837,514</b>	<b>5,361,709</b>	<b>8.9%</b>	<b>264,375</b>	<b>260,641</b>	<b>1.4%</b>	<b>22.1</b>	<b>20.6</b>	<b>7.3%</b>
Previous 12 Months	5,361,709			260,641			20.6		
Perc. Change	8.9%			1.4%			7.3%		



# RTC Transit Operating Statistics

Aug 24 - Jul '25

Route	Vehicle Revenue Miles (thousand)	Rides/VRM	Est. Gross Operating Cost (thousand)	Est. Cost Per VRH	Est. Cost Per VRM	Est. Cost Per Ride
RAPID VL	392.2	2.58	\$6,240	\$165	\$15.91	\$6.16
RAPID LL	173.5	2.65	\$2,969	\$165	\$17.11	\$6.45
1	152.2	2.69	\$2,533	\$165	\$16.64	\$6.20
2	180.3	2.32	\$2,835	\$165	\$15.73	\$6.77
4	82.1	1.76	\$1,045	\$165	\$12.72	\$7.21
5	190.7	1.97	\$2,470	\$165	\$12.95	\$6.56
6	57.9	1.62	\$1,031	\$165	\$17.79	\$10.97
7	314.0	1.18	\$2,956	\$165	\$9.41	\$7.98
9	121.0	1.68	\$1,771	\$165	\$14.63	\$8.70
11	368.1	2.02	\$5,610	\$165	\$15.24	\$7.54
12	156.2	2.27	\$2,546	\$165	\$16.30	\$7.19
13	76.7	2.29	\$1,370	\$165	\$17.87	\$7.81
14	92.9	1.26	\$1,590	\$165	\$17.10	\$13.57
15	96.9	1.83	\$1,552	\$165	\$16.02	\$8.76
16	41.6	1.78	\$987	\$165	\$23.75	\$13.31
18	99.6	2.51	\$1,510	\$165	\$15.16	\$6.03
21	117.7	1.60	\$1,776	\$165	\$15.09	\$9.43
54	76.6	0.96	\$787	\$165	\$10.27	\$10.66
56	129.4	1.33	\$1,448	\$165	\$11.19	\$8.42
RC Carson	101.4	0.20	\$556	\$165	\$5.49	\$26.93
Misc. Service						
<b>Current 12 Months</b>	<b>3,021.2</b>	<b>1.93</b>	<b>\$43,582</b>	<b>\$165</b>	<b>\$14.43</b>	<b>\$7.47</b>
Previous 12 Months	2,955.4	1.81	\$41,303	\$158	\$13.98	\$7.70
Perc. Change	2.2%	6.5%	5.5%	4.0%	3.2%	-3.1%

July

Aug 2024 - Jul 2025

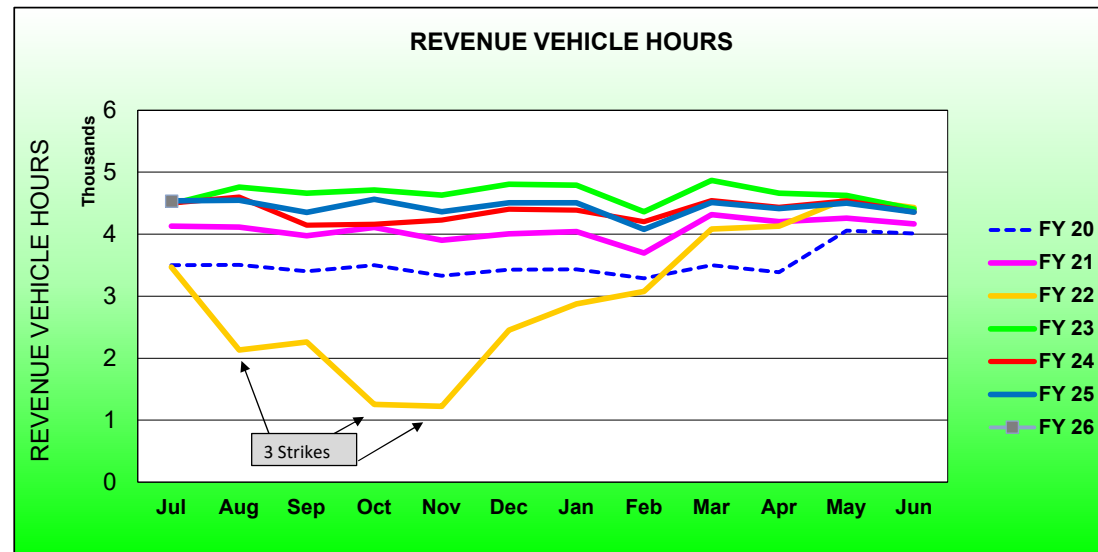
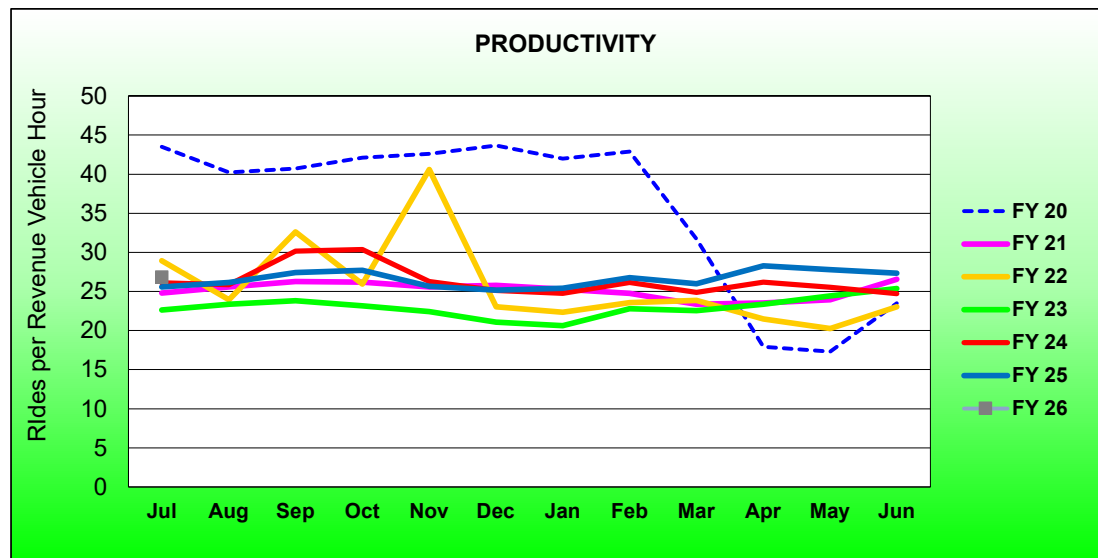
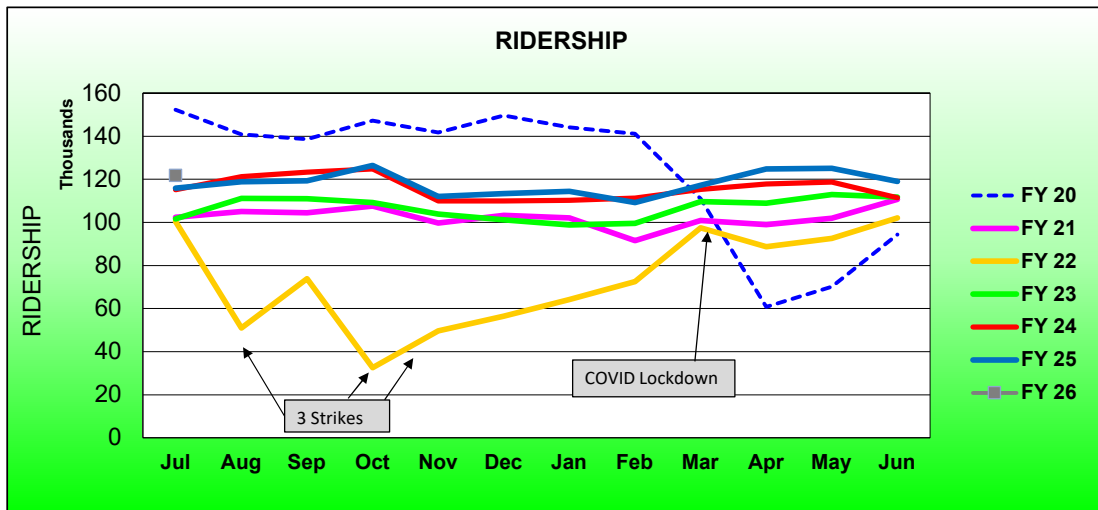
	2025	2024	Percent Change	Current 12 Months	Previous 12 Month	Percent Change
<b>Single Ride Cash</b>						
Full Fare	3,230	3,643	-11%	39,710	52,387	-24%
Reduced*	4,519	4,771	-5%	67,543	75,724	-11%
RTC ACCESS ID	396	335	18%	2,180	4,312	-49%
<b>Total</b>	<b>8,145</b>	<b>8,749</b>	<b>-7%</b>	<b>109,433</b>	<b>132,423</b>	<b>-17%</b>
<b>Day Pass Cash</b>						
Full Fare	54,262	59,107	-8%	615,337	672,002	-8%
Reduced*	60,812	66,889	-9%	756,149	820,048	-8%
<b>Total</b>	<b>115,074</b>	<b>125,996</b>	<b>-9%</b>	<b>1,371,486</b>	<b>1,492,050</b>	<b>-8%</b>
<b>Pre-Purchase Period Pass</b>						
Full Fare	125,928	117,799	7%	1,482,797	1,357,251	9%
Reduced*	161,523	153,065	6%	2,016,650	1,722,169	17%
<b>Total</b>	<b>287,451</b>	<b>270,864</b>	<b>6%</b>	<b>3,499,447</b>	<b>3,079,420</b>	<b>14%</b>
Transfers	311	293	6%	3,373	2,660	27%
Flow Through	12,053	5,209	131%	114,601	58,633	95%
Free Rides	52,813	39,975	32%	425,139	329,154	29%
U/Ed-Pass Free Rides	17,120	15,531	10%	279,639	218,281	28%
Stored Ride Pass	2,863	3,229	-11%	34,401	38,370	-10%
Full Fare	213,650	202,128	5.7%	2,384,152	2,269,916	5.0%
Reduced*	281,963	278,095	1%	3,452,342	3,089,911	12%
<b>Total Ridership</b>	<b>495,828</b>	<b>480,395</b>	<b>3.2%</b>	<b>5,837,514</b>	<b>5,361,709</b>	<b>8.9%</b>
Previous 12 Months	480,395			5,361,709		
Change	3.2%			8.9%		
<b>Vehicle Revenue Hours</b>	<b>22,430</b>	<b>22,527</b>	<b>-0.4%</b>	<b>264,375</b>	<b>260,641</b>	<b>1.4%</b>
Previous 12 Months	22,527			260,641		
Change	-0.4%			1.4%		
<b>Rides / VRH</b>	<b>22.1</b>	<b>21.3</b>	<b>3.7%</b>	<b>22.1</b>	<b>20.6</b>	<b>7.3%</b>
Previous 12 Months	21.3			20.6		
Change	3.7%			7.3%		
<b>Vehicle Revenue Miles</b>	<b>258,215</b>	<b>257,767</b>	<b>0.2%</b>	<b>3,021,162</b>	<b>2,955,378</b>	<b>2.2%</b>
<b>Rides / VRM</b>	<b>1.92</b>	<b>1.86</b>	<b>3.0%</b>	<b>1.93</b>	<b>1.81</b>	<b>6.5%</b>
Est. Gross Operating Cost	\$3,697,613	\$3,713,597	-0.4%	\$43,582,264	\$41,303,047	5.5%
Est. Cost Per VRH	\$165	\$165	0.0%	\$164.85	\$158.47	4.0%
Est. Cost Per VRM	\$14.32	\$14.41	-0.6%	\$14.43	\$13.98	3.2%
Est. Cost Per Ride	\$7.46	\$7.73	-3.5%	\$7.47	\$7.70	-3.1%

\* - Reduced fare includes Youth, Senior, Disabled, and US Veterans

RTC RAPID Virginia Line and Route 1						
ROLLING 12-MONTH COMPARISON						
Most Recent 12 Months			Percent Change	Previous 12 Months		
Month	Year	Ridership		Month	Year	Ridership
Aug	2024	118,809	-2.0%	Aug	2023	121,197
Sep		119,329	-3.2%	Sep		123,298
Oct		126,372	1.3%	Oct		124,715
Nov		111,991	1.9%	Nov		109,893
Dec		113,334	3.1%	Dec		109,966
Jan	2025	114,436	3.8%	Jan	2024	110,229
Feb		109,175	-1.9%	Feb		111,239
Mar		117,198	1.6%	Mar		115,379
Apr		124,772	5.9%	Apr		117,811
May		125,160	5.5%	May		118,653
Jun		119,089	6.8%	Jun		111,479
Jul		121,685	4.9%	Jul		115,958
TOTAL		1,421,350	2.3%	TOTAL		1,389,817

\* - Strikes occurred Aug 3-13, Sep 27-Oct 20, Nov 9-Dec 3, 2021

## RTC RAPID Virginia Line and Route 1 Fiscal Year Comparisons



RTC RAPID Lincoln Line and Route 11						
Rolling 12-Month Comparison						
Most Recent 12 Months			Percent Change	Previous 12 Months		
Month	Year	Ridership		Month	Year	Ridership
Aug	2024	105,967	24%	Aug	2023	85,588
Sep		100,874	17%	Sep		86,016
Oct		104,465	21%	Oct		86,638
Nov		94,528	23%	Nov		76,791
Dec		94,246	21%	Dec		77,855
Jan	2025	100,102	22%	Jan	2024	82,348
Feb		92,939	15%	Feb		81,020
Mar		100,033	16%	Mar		86,512
Apr		104,152	15%	Apr		90,650
May		102,894	9%	May		94,524
Jun		98,787	8%	Jun		91,699
Jul		105,911	8.1%	Jul		97,939
TOTAL		1,204,898	16%	TOTAL		1,037,580

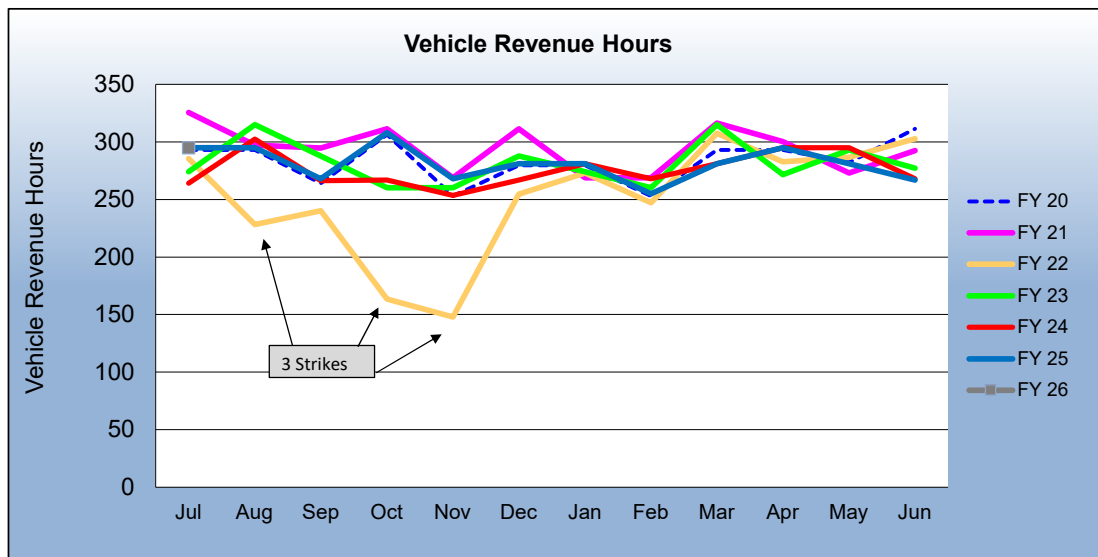
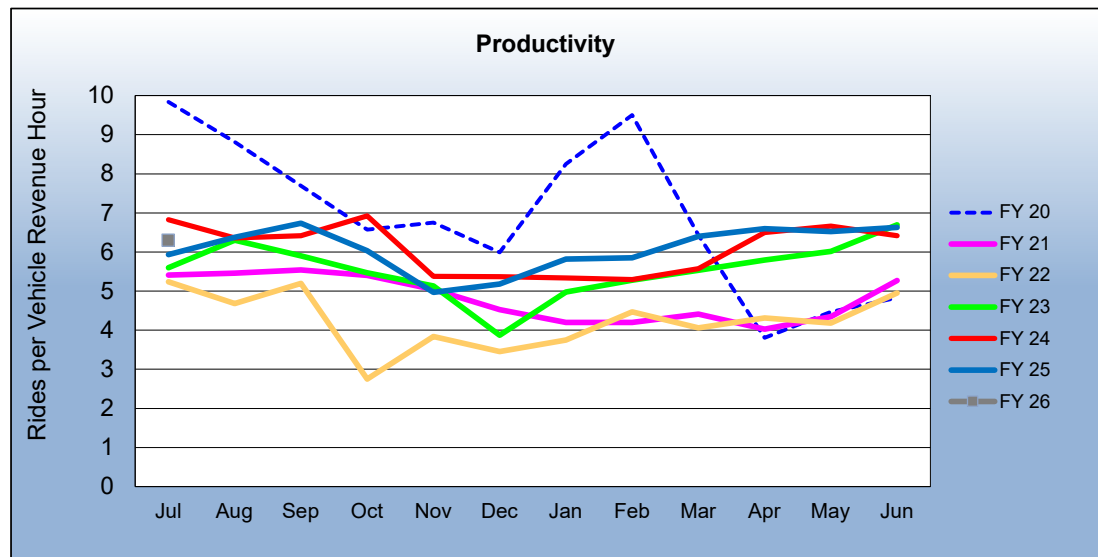
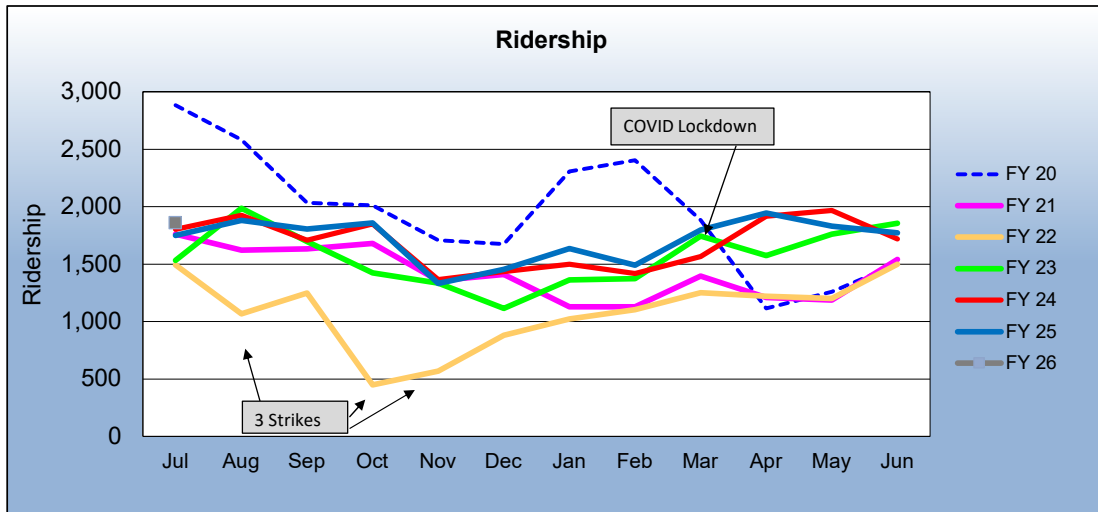
RTC RAPID Virginia & Lincoln Lines						
ROLLING 12-MONTH COMPARISON						
Most Recent 12 Months			Percent Change	Previous 12 Months		
Month	Year	Ridership		Month	Year	Ridership
Aug	2024	121,538	-5.3%	Aug	2023	128,312
Sep		122,911	-3.4%	Sep		127,255
Oct		129,927	2.0%	Oct		127,380
Nov		117,096	4.8%	Nov		111,741
Dec		118,408	5.6%	Dec		112,141
Jan	2025	120,884	8.5%	Jan	2024	111,384
Feb		115,147	2.9%	Feb		111,895
Mar		122,799	5.5%	Mar		116,399
Apr		129,444	7.6%	Apr		120,299
May		128,849	5.5%	May		122,131
Jun		121,172	6.6%	Jun		113,689
Jul		124,845	6.5%	Jul		117,265
TOTAL		1,473,020	3.7%	TOTAL		1,419,891

\* - Strikes occurred Aug 3-13, Sep 27-Oct 20, Nov 9-Dec 3, 2021

RTC REGIONAL CONNECTOR - Carson Line						
Rolling 12 Month Comparison						
Most Recent 12 Months			Percent Change	Previous 12 Months		
Month	Year	Ridership		Month	Year	Ridership
Aug	2024	1,882	-2.2%	Aug	2023	1,924
Sep		1,806	5.7%	Sep		1,708
Oct		1,859	0.5%	Oct		1,849
Nov		1,332	-2.4%	Nov		1,365
Dec		1,456	1.5%	Dec		1,434
Jan	2025	1,636	9.1%	Jan	2024	1,500
Feb		1,492	5.1%	Feb		1,419
Mar		1,798	14.7%	Mar		1,567
Apr		1,945	1.5%	Apr		1,916
May		1,832	-6.8%	May		1,965
Jun		1,771	3.0%	Jun		1,720
Jul		1,858	6.1%	Jul		1,751
TOTAL		20,667	2.7%	TOTAL		20,118

\* - Strikes occurred Aug 3-13, Sep 27-Oct 20, Nov 9-Dec 3, 2021

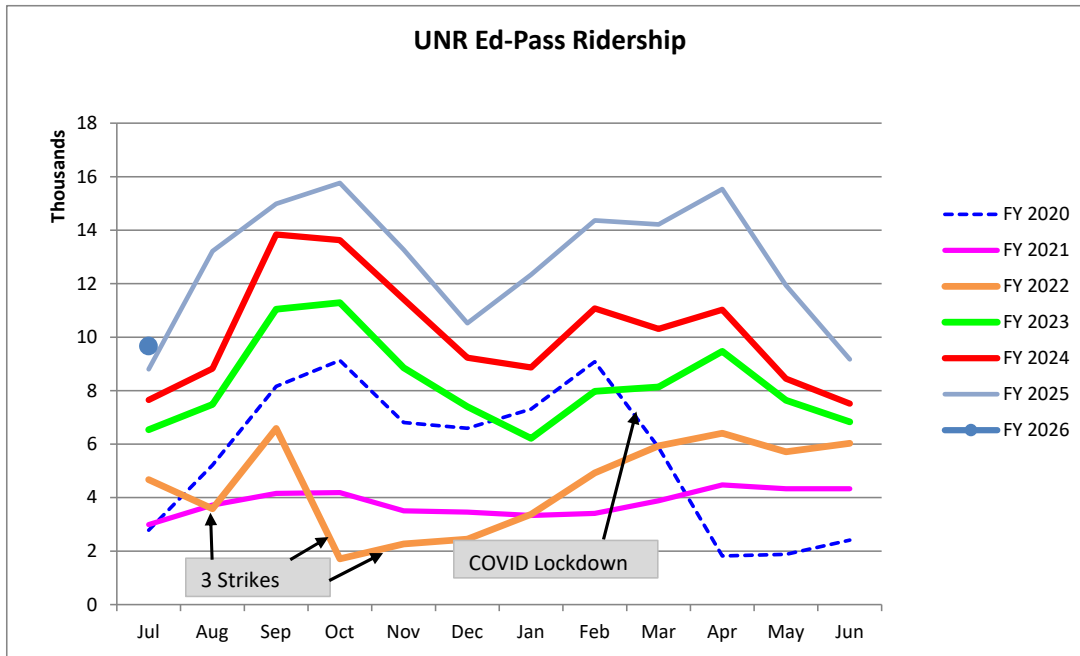
## RTC REGIONAL CONNECTOR Carson Line Fiscal Year Comparisons





**RTC Transit Fixed Route Bus Ridership Report  
University of Nevada, Reno Ed-Pass Program  
FY 2026**

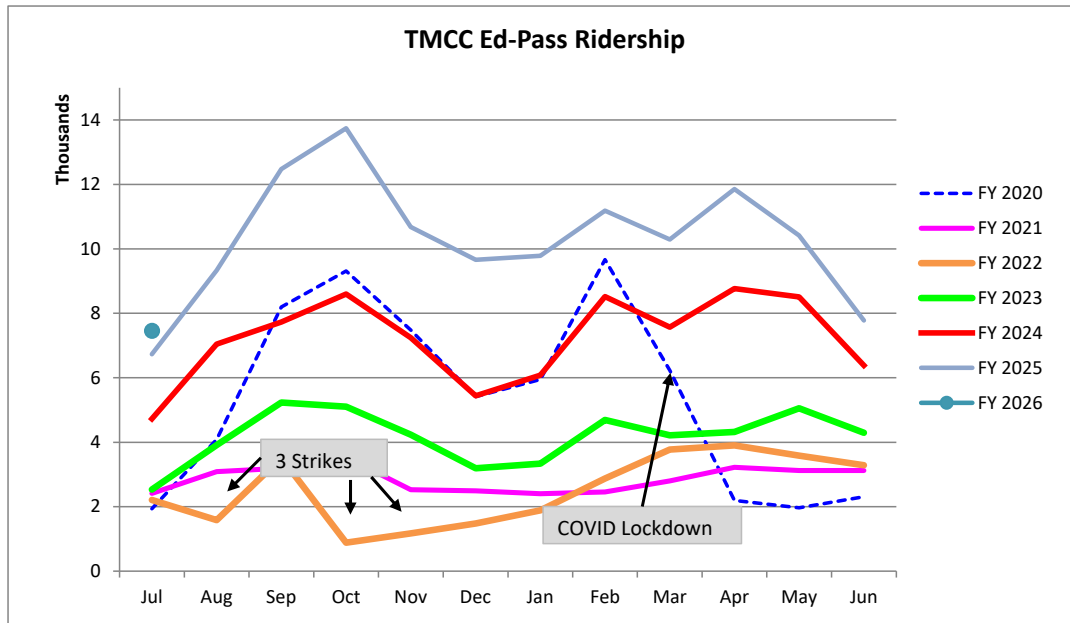
Category	Jul	Aug	Sep	Oct	Nov	Dec	Jan	Feb	Mar	Apr	May	Jun	FYTD
FY 2020	2,779	5,218	8,159	9,127	6,808	6,592	7,312	9,084	5,873	1,818	1,877	2,410	67,057
FY 2021	2,991	3,723	4,156	4,185	3,502	3,455	3,329	3,409	3,881	4,471	4,333	4,330	45,765
FY 2022	4,670	3,581	6,584	1,710	2,264	2,447	3,376	4,924	5,936	6,410	5,716	6,033	53,651
FY 2023	6,539	7,482	11,046	11,291	8,857	7,399	6,215	7,973	8,138	9,470	7,640	6,833	98,883
FY 2024	7,650	8,824	13,841	13,631	11,414	9,231	8,864	11,077	10,309	11,024	8,445	7,516	121,826
FY 2025	8,797	13,215	14,988	15,763	13,269	10,523	12,336	14,363	14,216	15,538	11,934	9,170	154,112
Percent Change	10%												
FY 2026	9,663												



Fiscal Year	Rides
FY 2003	51,228
FY 2004	55,114
FY 2005	69,685
FY 2006	88,070
FY 2007	85,295
FY 2008	86,461
FY 2009	88,385
FY 2010	79,518
FY 2011	75,925
FY 2012	75,300
FY 2013	50,438
FY 2014	40,854
FY 2015	41,778
FY 2016	50,022
FY 2017	40,581
FY 2018	34,154
FY 2019	30,251
FY 2020	67,057
FY 2021	45,765
FY 2022	53,651
FY 2023	98,883
FY 2024	121,826
FY 2025	154,112

**RTC Transit Fixed Route Bus Ridership Report  
Truckee Meadows Community Ed-Pass Program  
FY 2026**

Category	Jul	Aug	Sep	Oct	Nov	Dec	Jan	Feb	Mar	Apr	May	Jun	FYTD
FY 2020	1,933	4,086	8,193	9,311	7,479	5,413	5,945	9,668	6,227	2,193	1,968	2,310	64,726
FY 2021	2,414	3,090	3,194	3,535	2,527	2,493	2,402	2,459	2,800	3,225	3,126	3,124	34,389
FY 2022	2,208	1,584	3,516	883	1,170	1,480	1,886	2,875	3,773	3,899	3,585	3,287	30,146
FY 2023	2,533	3,913	5,233	5,103	4,231	3,195	3,335	4,690	4,213	4,314	5,051	4,292	50,103
FY 2024	4,725	7,045	7,727	8,596	7,244	5,440	6,081	8,520	7,569	8,768	8,510	6,384	86,609
FY 2025	6,734	9,334	12,476	13,741	10,681	9,659	9,785	11,186	10,294	11,855	10,416	7,777	123,938
Percent Change	11%												
FY 2026	7,457												



Fiscal Year	Rides
FY 2013	90,583
FY 2014	113,700
FY 2015	94,112
FY 2016	83,375
FY 2017	66,110
FY 2018	53,027
FY 2019	37,191

Ed-Pass:	
FY 2020	64,726
FY 2021	34,389
FY 2022	30,146
FY 2023	50,103
FY 2024	86,609
FY 2025	123,938