

# Meeting Overview

- **The meeting is open-house style from 5-7 p.m. with a brief presentation at 5:30 p.m.**
- Staff are available one-on-one to answer your questions throughout the meeting
- All project information is also available on the project website by scanning the QR code, or visiting: [rtcwashoe.com/project/military-road-capacity-safety/](https://rtcwashoe.com/project/military-road-capacity-safety/)
- **Austin McCoy, RTC Project Manager**  
(775) 335-1824  
[amccoy@rtcwashoe.com](mailto:amccoy@rtcwashoe.com)





# Military Road Capacity & Safety Project

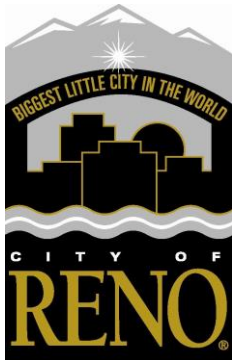
May 7, 2026



# A Combined Effort

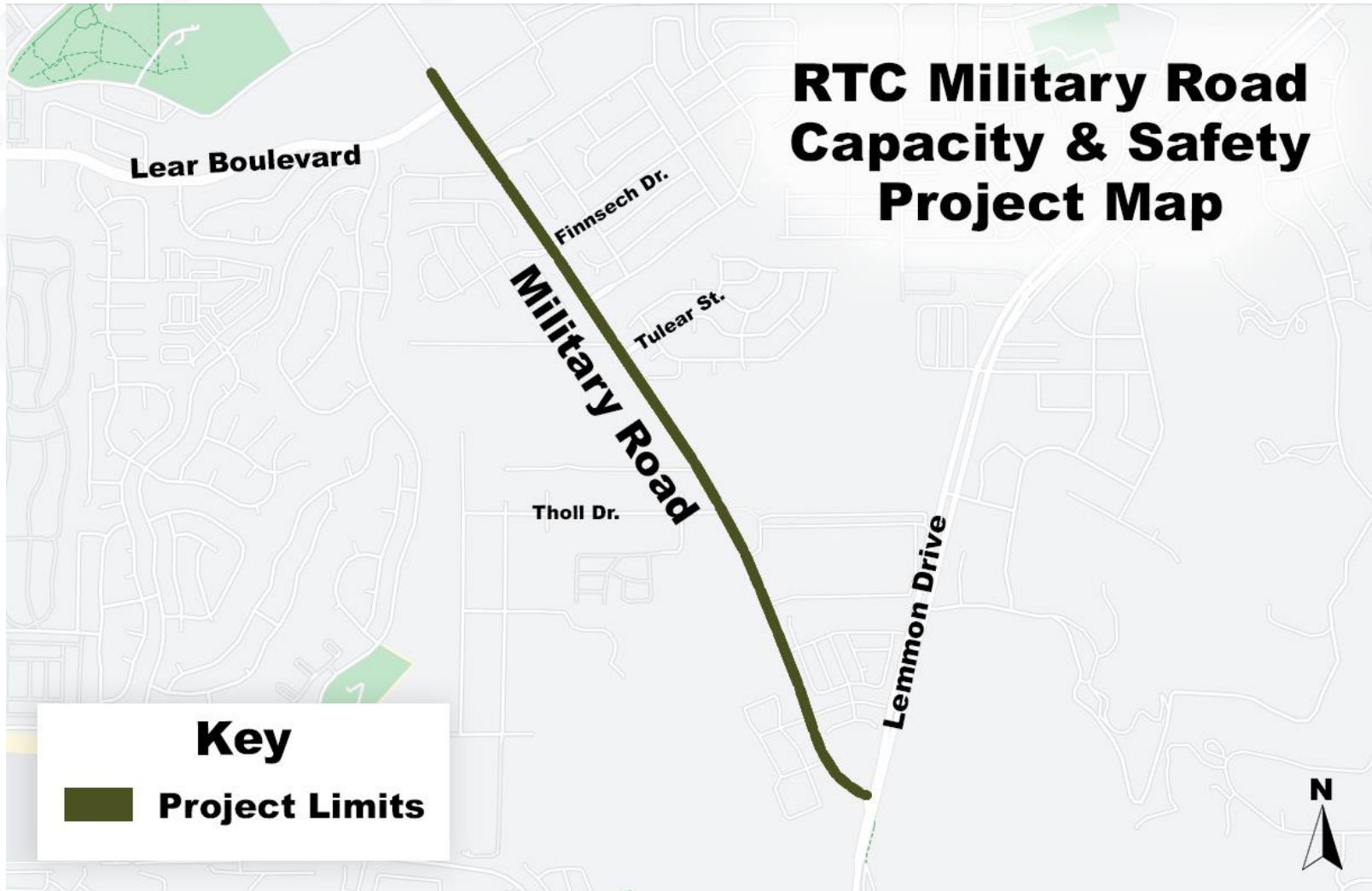


- Through an Interlocal Agreement, the **RTC is responsible for road design and construction.**
- Military Road is a Minor Arterial (more than 15,000 cars/day).



- **Military Road is owned by the City of Reno**
- When construction is complete, the City of Reno is responsible for regular maintenance

# About the Project



- **Limits:** Lemmon Drive to Lear Boulevard
- **Widening Military Road** from two to four lanes.
- **Construction is anticipated to begin June, 2026.**

# Project History & Funding

- This project was identified in the **2050 Regional Transportation Plan (RTP)**.
- Project design has been ongoing since **2023**.
  - Public input was gathered at the **April 2024 Meeting**.
- Total investment ~**\$35 million**.
  - Funded by **Regional Road Impact Fees**, which are paid by developers.





# Project Purpose & Benefits

## ○ Primary Goals:

- Improve **safety**
- Increase **capacity**
- Enhance **multimodal access**

## ○ Key Benefits:

- Improved traffic flow
- Increased roadway capacity (**2 lanes to 4 lanes**)
- Better pedestrian, bicycle, and scooter access
- Safer intersections
- Improved drainage systems



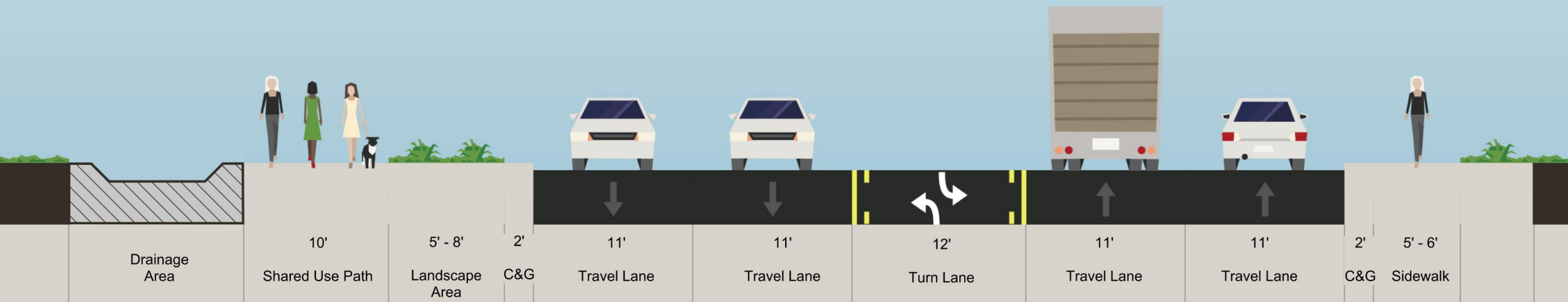
# Safety & Multimodal Improvements

## ○ Intersection upgrades at:

- Lemmon Drive
- Tulear Street, Finnsech Drive, Lear Boulevard (**New Traffic Signals**)

## ○ Multimodal Improvements

- Shared Use Path and sidewalk for full connectivity
- RRFB pedestrian crossing near Petal Blossom Dr and Orchard Rock Dr
- New crosswalks at minor side streets
- Safety lighting at driveways and streets intersecting the shared use path



# Roadway Design

- 4-lane widening from Lemmon Drive to Lear Boulevard
  - Includes center turn lanes where appropriate
- Shared Use Path (**separated from roadway**) and pedestrian facilities are included
- Minimized existing sidewalk removal

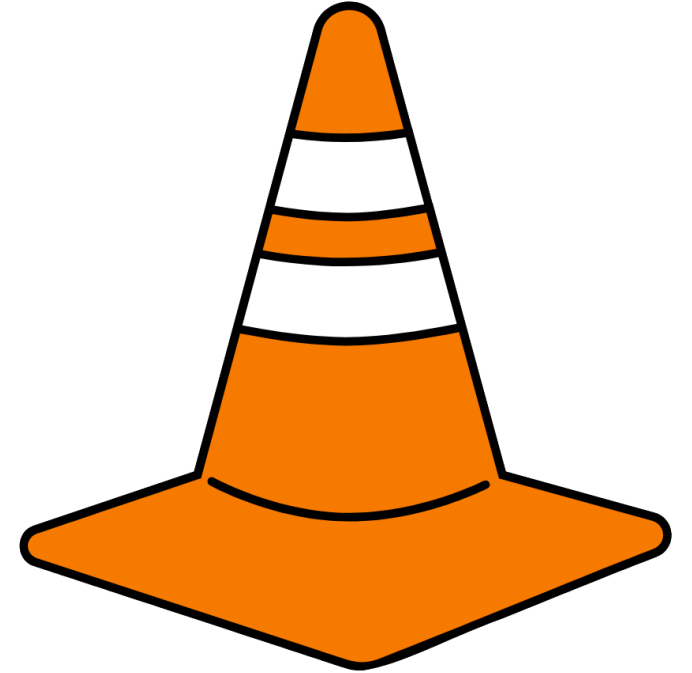
# Drainage Improvements



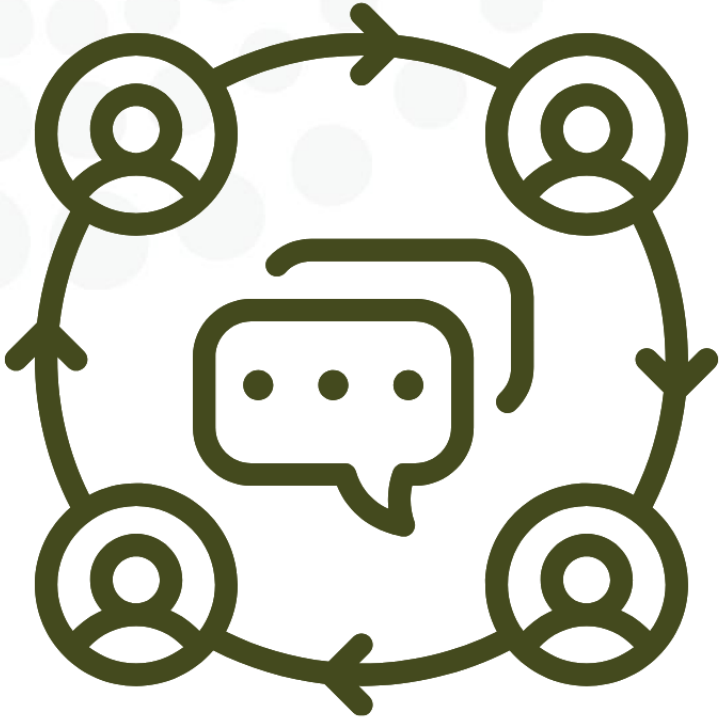
- **New curb, gutter, and roadway grading**
- Adding **underground drainage** infrastructure
- Adding **roadside drainage** channels and ditches
- Connecting to **existing underground drainage** infrastructure
- **Goal:** Move water from the roadway & prevent runoff impacts to adjacent properties

# Construction Overview

- **Work plan**
  - **Underground** utilities and storm drain
  - **West side** shared-use path, curb & gutter, side street work, then switch to **the east side**
  - **Paving/widening (2027)** in four separate work zones
- **Traffic Control**
  - **Maintain 1 lane of traffic in each direction**
  - **Access to homes and businesses will be preserved**
- **Working Hours**
  - **Regular hours: Monday- Friday, 7 a.m. to 7 p.m.**
  - **Weekend work- as needed. The project team will provide advance notice.**
- **Anticipated completion: Fall 2027**



# Where to Get Information During Construction



- **Project webpage:**  
[rtcwashoe.com/project/military-road-capacity-safety/](https://rtcwashoe.com/project/military-road-capacity-safety/)
- **Sign up for project update emails:**  
Sign up on the project website, or make sure you opted in when you signed in for this meeting.
- **Project hotline:** (775) 235-2686

# Thank you for attending!

- Answers to frequently asked questions are in your handout.
- Staff will be available one-on-one to answer your questions after the Q&A session.
- All project information is also available on the project website by scanning the QR code, or visiting: [rtcwashoe.com/project/military-road-capacity-safety/](https://rtcwashoe.com/project/military-road-capacity-safety/)

